

Action Item 2016-15

# **Regional Bicycle Transportation Network Change Requests**


TAC Planning Committee


Jan. 14, 2016



# Regional Bicycle Transportation Network Vision

## RBTN Alignments

 Tier 1 Alignments

 Tier 2 Alignments

## RBTN Corridors (Alignments Undefined)

 Tier 1 Priority Regional Bicycle Transportation Corridor

 Tier 2 Regional Bicycle Transportation Corridors

## Other Trail Systems

 Regional Trails (Regional Parks Policy Plan)

 Mississippi River Trail (US Route 45)

 State Trails (DNR)

## Regional Destinations

 Metropolitan Job Centers

 Regional Job Centers

 Subregional Job Centers

 Large High Schools

 Colleges & Universities

 Major Sport & Entertainment Centers


 Highly Visited Regional Parks


## Reference Items

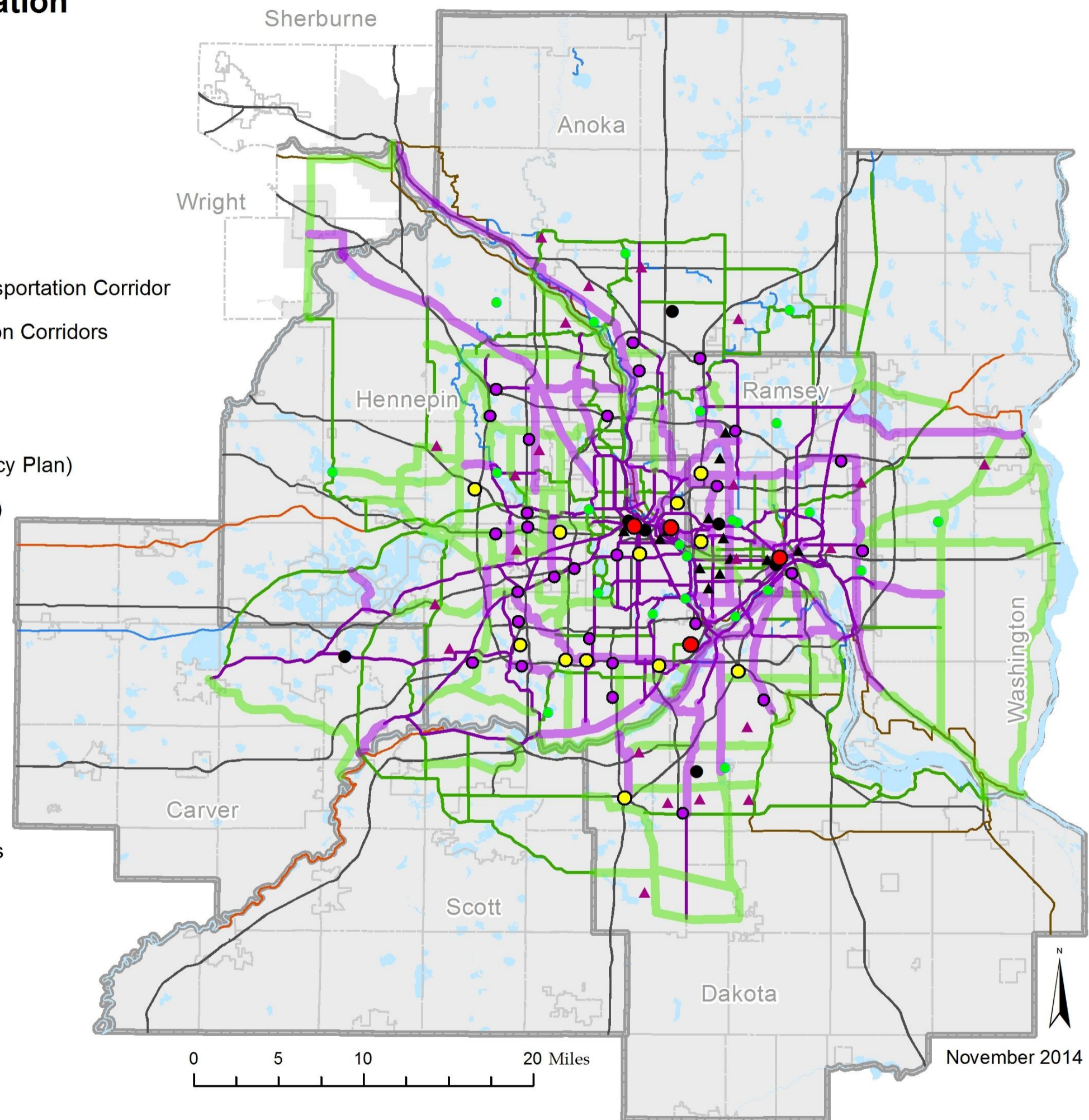
 Principal Arterial Roads

 Lakes and Rivers

 City Boundary

 County Boundary

 2040 Municipal Urban Service Area  
MPO Area



November 2014

# Regional Bicycle Transportation Network

RBTN Administrative/Technical Changes Considered in this process:

1. Designating official alignment within an established RBTN corridor
2. Establishing designated alignment outside RBTN corridor that is parallel to and within ½-mile of original corridor
3. Moving a designated alignment to a parallel location within ½-mile of original alignment

# Review and Analysis

## Determination of consistency with regional intent of original RBTN corridor

### 11 guiding principles for RBTN development:

- Overcome physical barriers & eliminate system gaps
- Facilitate safe and continuous trips to regional destinations
- Function as arteries to connect regional destinations & transit system year round
- Accommodate a broad range of cyclist abilities and preferences
- Integrate and/or supplement existing and planned infrastructure
- Provide improved opportunities to increase bicycle mode share
- Connect to local, state, and national bikeway networks
- Consider opportunities to enhance economic development
- Be equitably distributed throughout the region
- Follow spacing guidelines that reflect established development/trans patterns
- Consider priorities reflected in adopted plans

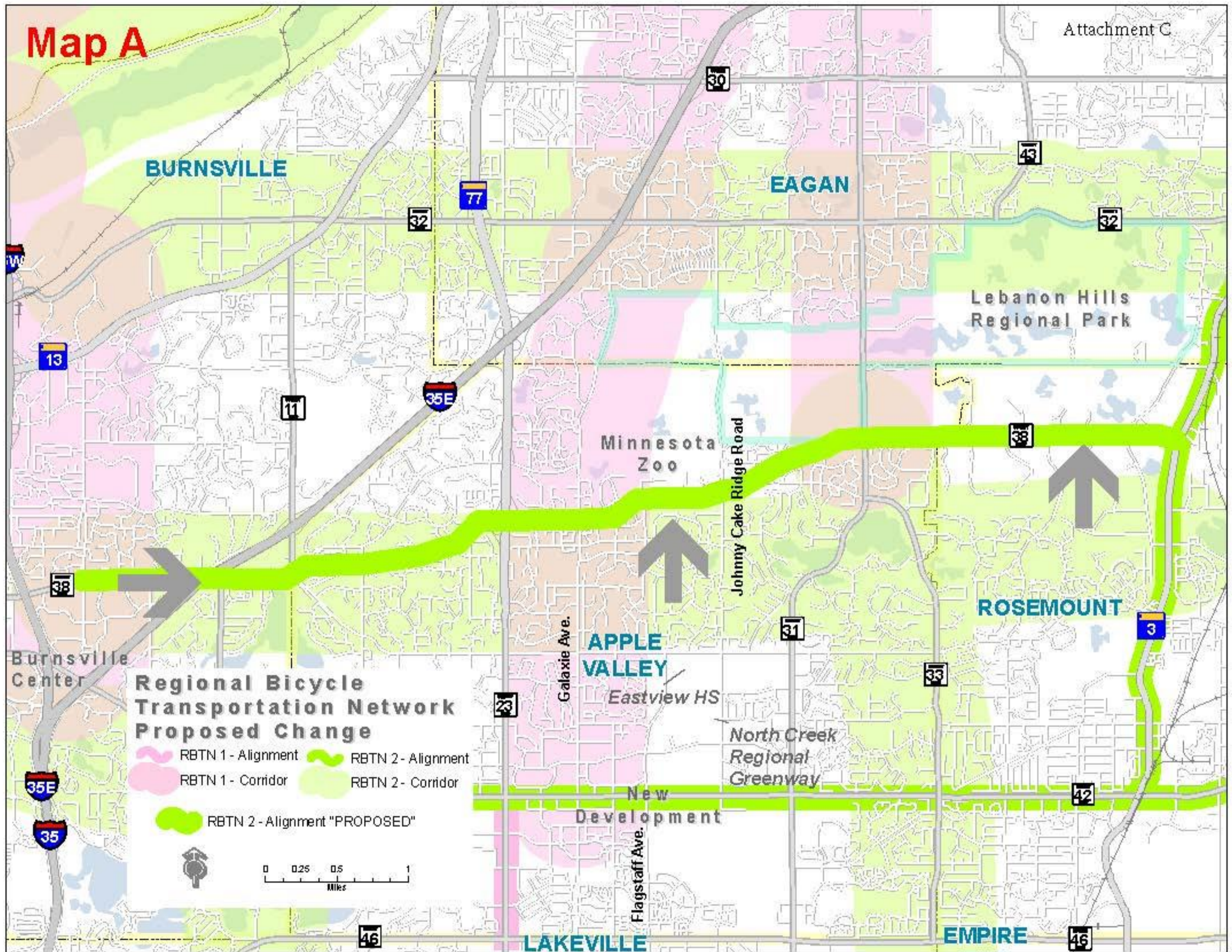
# RBTN Map Change Requests

## Change Request #1

**Dakota County:** Designate CSAH 38 as the Tier 2 alignment for the existing RBTN Tier 2 corridor between Nicollet Avenue in Burnsville and TH 3 in Rosemount.

# Map A

Attachment C



# RBTN Map Change Requests

## Change Request #1

**Dakota County:** Designate CSAH 38 as the Tier 2 alignment for the existing Tier 2 corridor between Nicollet Avenue in Burnsville and TH 3 in Rosemount.

### Findings:

- All criteria were met regarding
  - original RBTN corridor directional orientation
  - proximity of the proposed alignment
  - support within local plans
- All criteria were met with regard to RBTN guiding principles

### Recommendation:

Accept request to designate CSAH 38 as the RBTN Tier 2 alignment between Nicollet Avenue and TH 3.

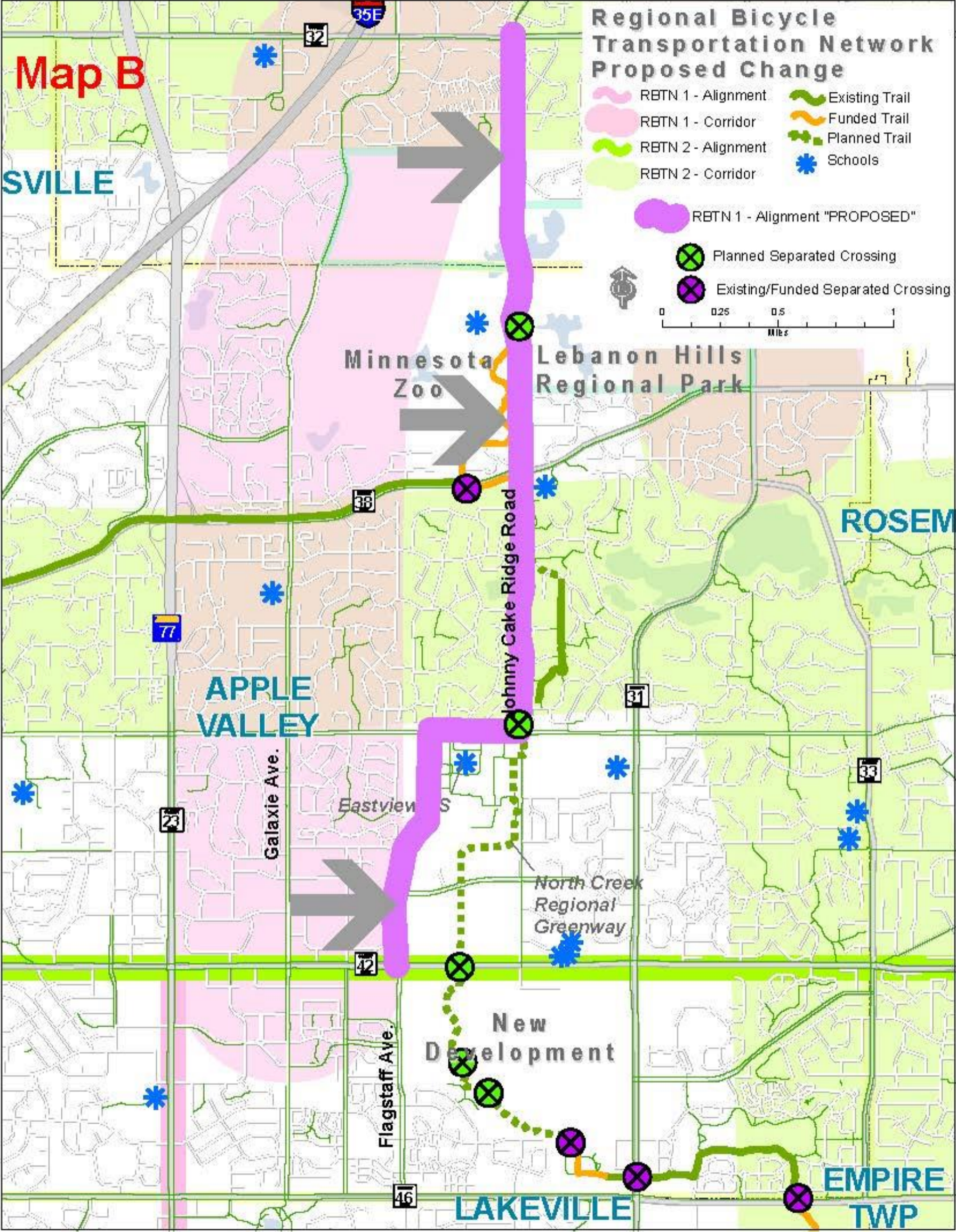
# RBTN Map Change Requests

## Change Request #2:

**Dakota County:** Designate a Tier 1 alignment approx. 1/8-mile to 1/2-mile east of & generally parallel to the north-south RBTN Tier 1 corridor centered along Galaxie Ave between CSAH 42 and CSAH 32.



# Map B



# RBTN Map Change Requests

## Change Request #2

**Dakota County:** Designate a Tier 1 alignment approx. 1/8-mile to 1/2-mile east of & parallel to RBTN Tier 1 corridor centered along Galaxie Ave between CSAH 42 and CSAH 32.

### Findings:

- All criteria were met regarding RBTN corridor directional orientation and proximity, and regarding support within local plans
- All but one criteria were met with regard to RBTN guiding principles
- One criterion (spacing guidelines) was partially met;  
end result: proposed alignment improves direct connections and increases potential bicycle travel compared to original RBTN corridor

### Recommendation:

Accept request to designate Tier 1 alignment east of and parallel to existing Tier 1 corridor centered along Galaxie Ave in Dakota County.