



**TRANSPORTATION**  
**POLICY PLAN**

# **RBTN Proposed Changes for TPP Update/Regional Solicitation**

TAC Planning  
October 12, 2017

# Regional Bicycle Transportation Network Vision

## RBTN Alignments

- Tier 1 Alignments
- Tier 2 Alignments

## RBTN Corridors (Alignments Undefined)

- Tier 1 Priority Regional Bicycle Transportation Corridor
- Tier 2 Regional Bicycle Transportation Corridors

## Other Trail Systems

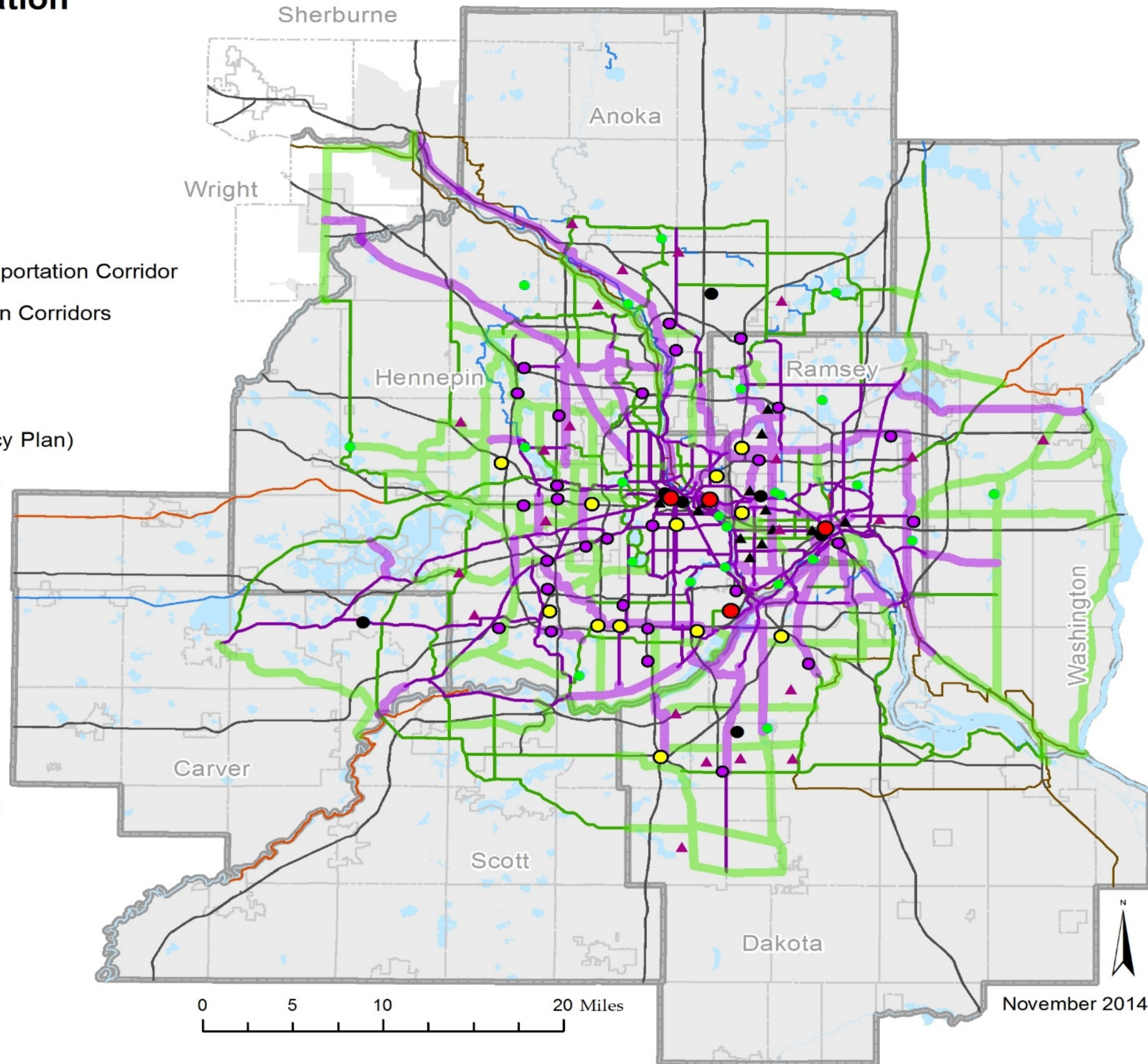
- Regional Trails (Regional Parks Policy Plan)
- Mississippi River Trail (US Route 45)
- State Trails (DNR)

## Regional Destinations

- Metropolitan Job Centers
- Regional Job Centers
- Subregional Job Centers
- Large High Schools
- Colleges & Universities
- Major Sport & Entertainment Centers
- Highly Visited Regional Parks

## Reference Items

- Principal Arterial Roads
- Lakes and Rivers
- City Boundary
- County Boundary
- 2040 Municipal Urban Service Area MPO Area



November 2014

# RBTN Changes

## Administrative Changes

- Slight corrections to alignments or corridors
- Designation of alignments in established corridors

## Substantive Changes

- Shifting corridors or alignments in response to implementation challenges
- Extending/truncating corridors or alignments to improve connectivity/invoke changes based “on-the-ground” realities
- Adding new corridors/alignments to better connect regional destinations or to better align w/local bike plans

# RBTN Changes

Proposed changes derived from:

1. Review meetings with county and/or city planning & engineering staff
2. Last Regional Solicitation process
3. Other communications with local agencies since last TPP update
4. Review by bike/ped peer group

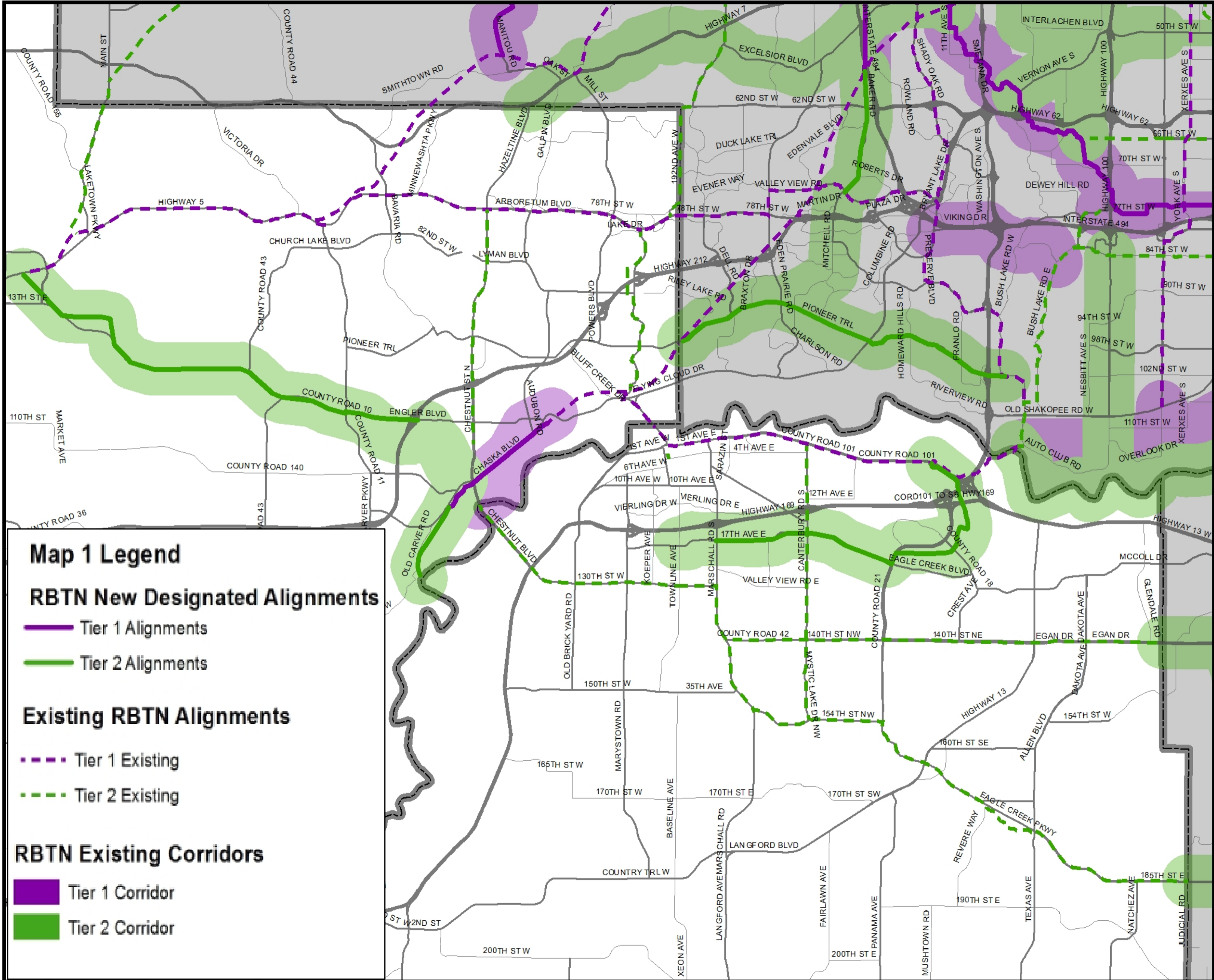
# RBTN Changes

## Maps for three regional sub-areas:

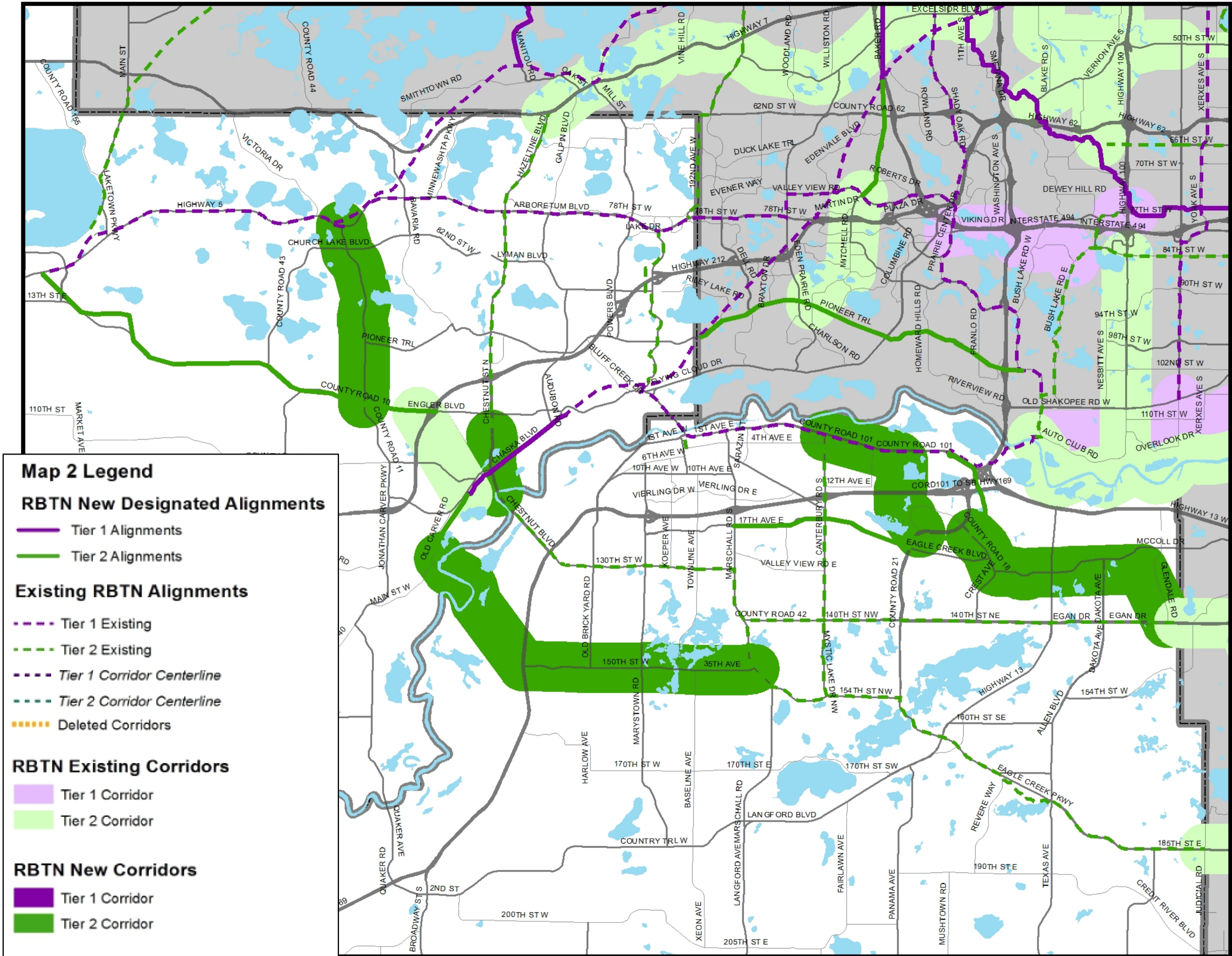
- Scott & Carver Counties
- Hennepin, Anoka, & Ramsey Counties
- Dakota & Washington Counties

## For each sub-area, will highlight:

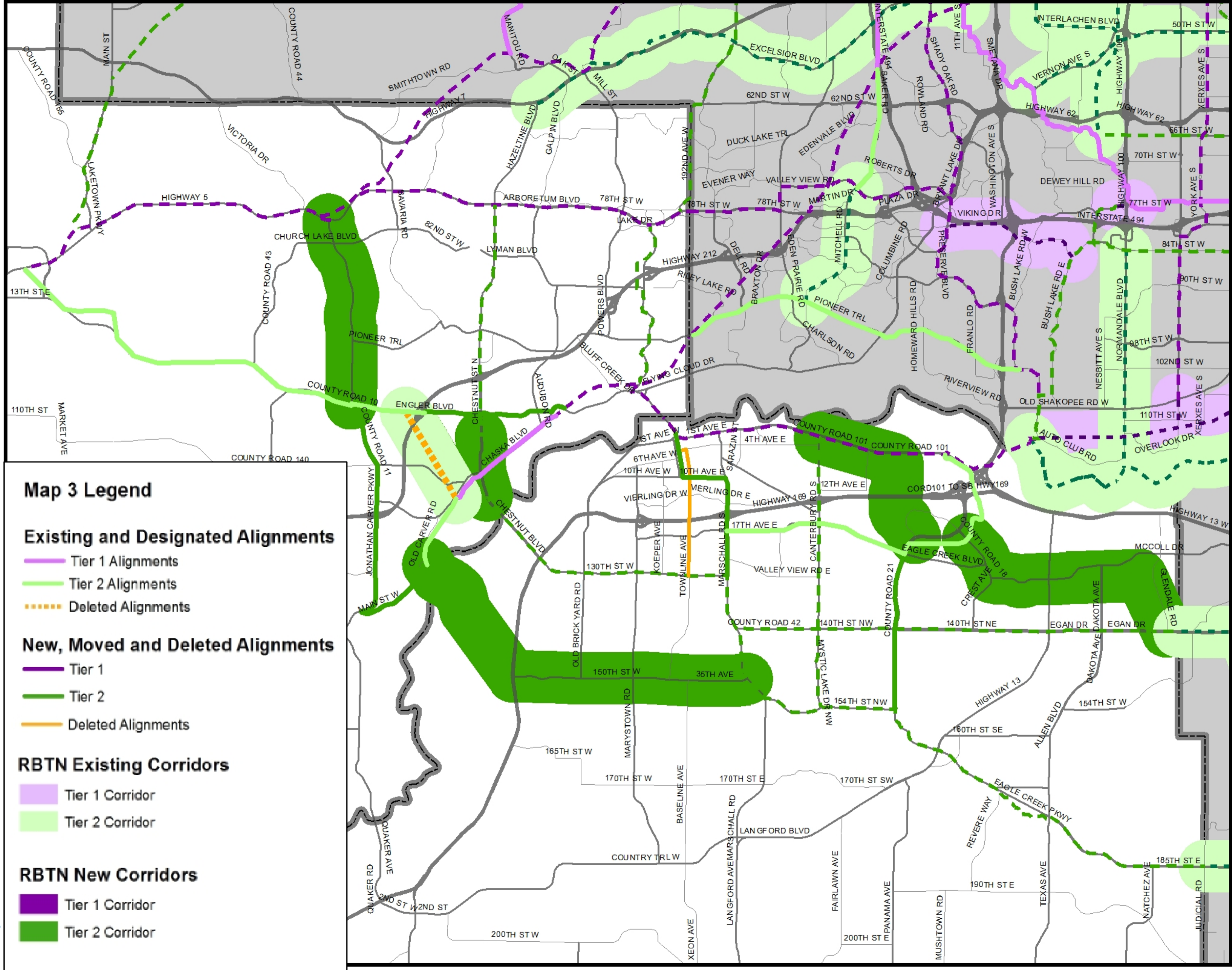
1. Map of new Designated Alignments
2. Map of proposed shifted, new and removed Corridors
3. Map of proposed shifted, new or removed Alignments



# Scott & Carver Co. Alignment Designations

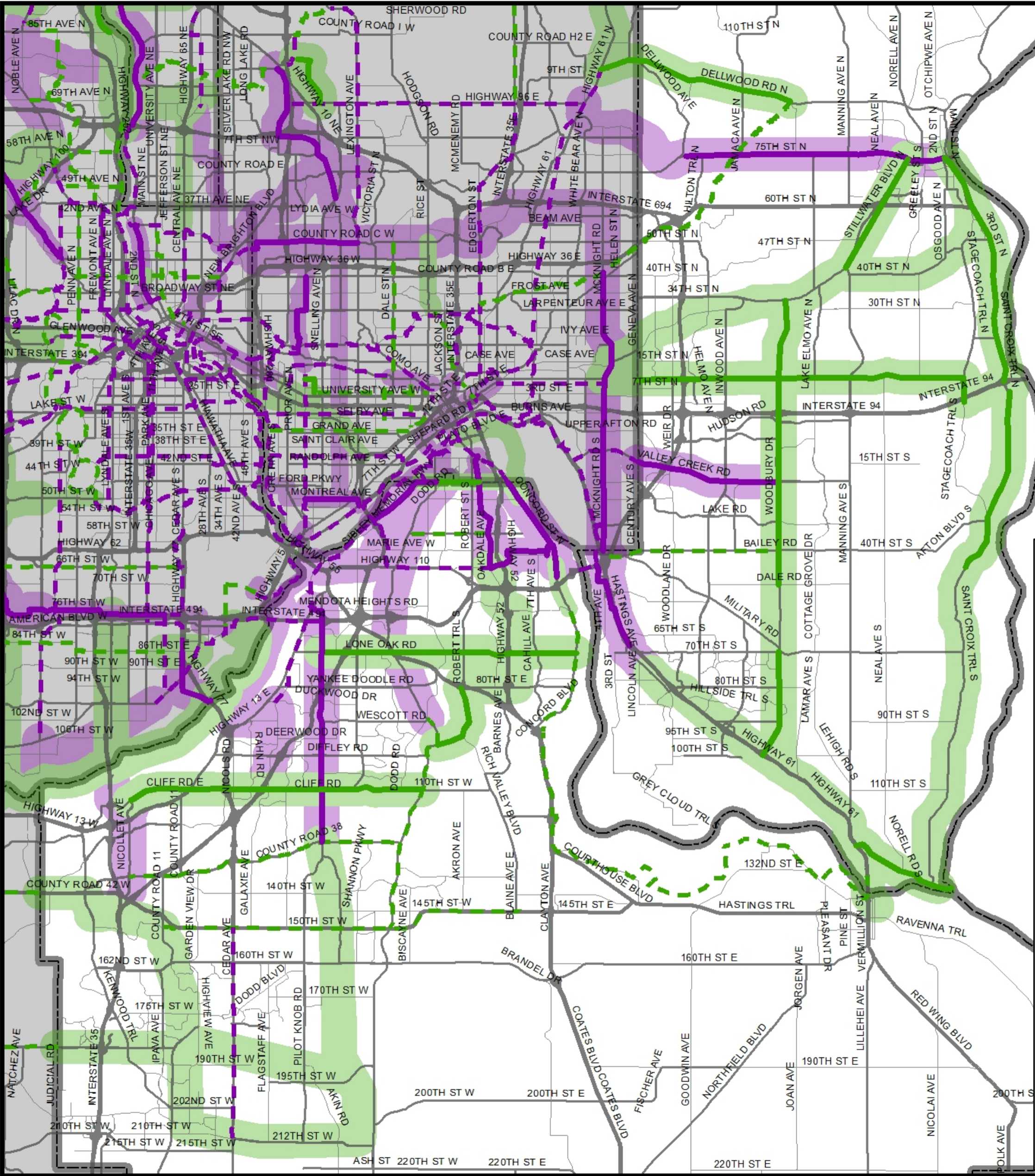


# Scott & Carver County New Corridors



# Scott and Carver County New & Removed Alignments





### Map 1 Legend

**RBTN New Designated Alignments**

- Tier 1 Alignments (Solid Purple Line)
- Tier 2 Alignments (Solid Green Line)

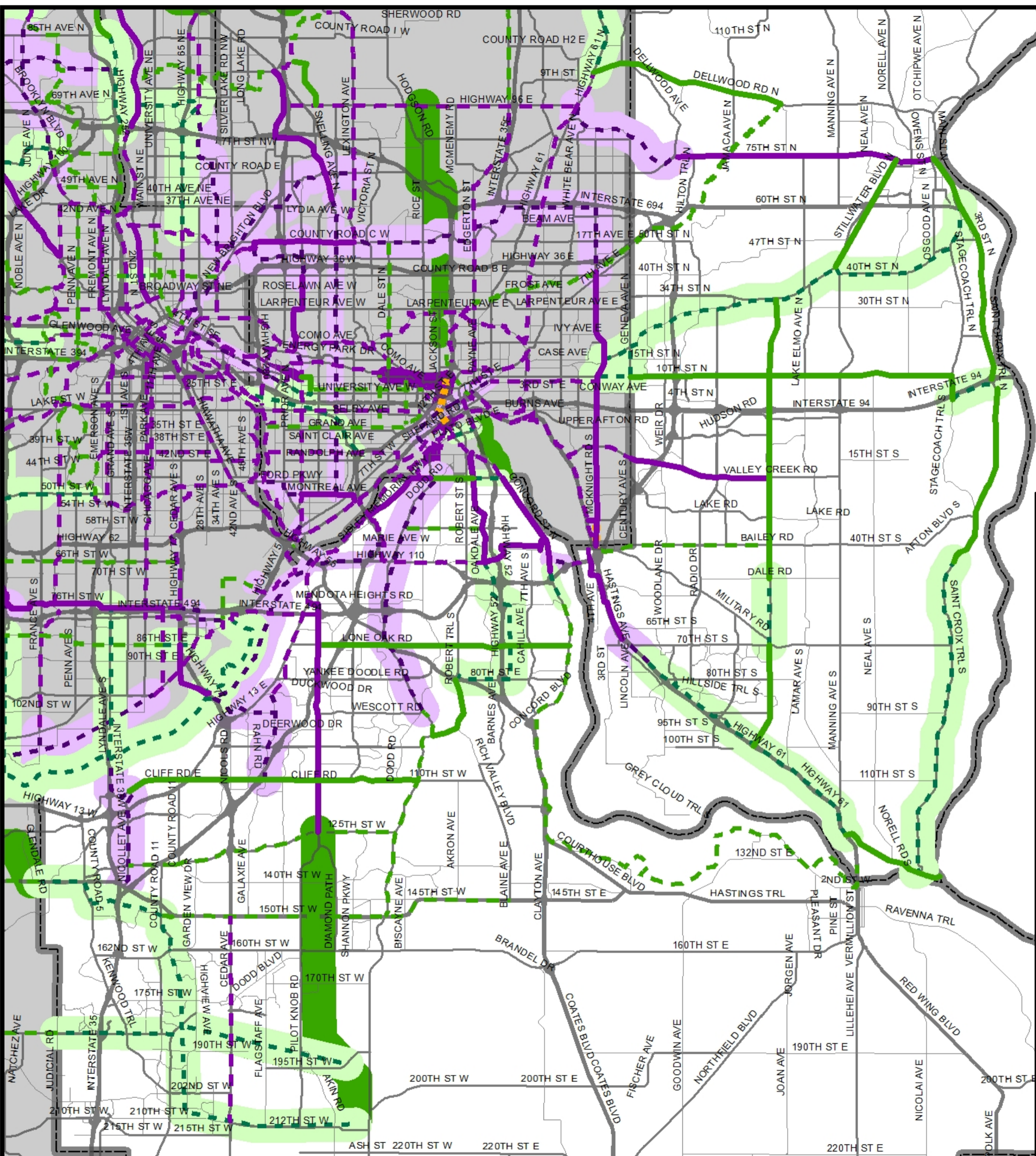
**Existing RBTN Alignments**

- Tier 1 Existing (Dashed Purple Line)
- Tier 2 Existing (Dashed Green Line)

**RBTN Existing Corridors**

- Tier 1 Corridor (Shaded Purple Area)
- Tier 2 Corridor (Shaded Green Area)

# Dakota & Washington Co. Alignment Designations



**Map 2 Legend**

**RBTN New Designated Alignments**

- Tier 1 Alignments
- Tier 2 Alignments

**Existing RBTN Alignments**

- Tier 1 Existing
- Tier 2 Existing
- Tier 1 Corridor Centerline
- Tier 2 Corridor Centerline
- Deleted Corridors

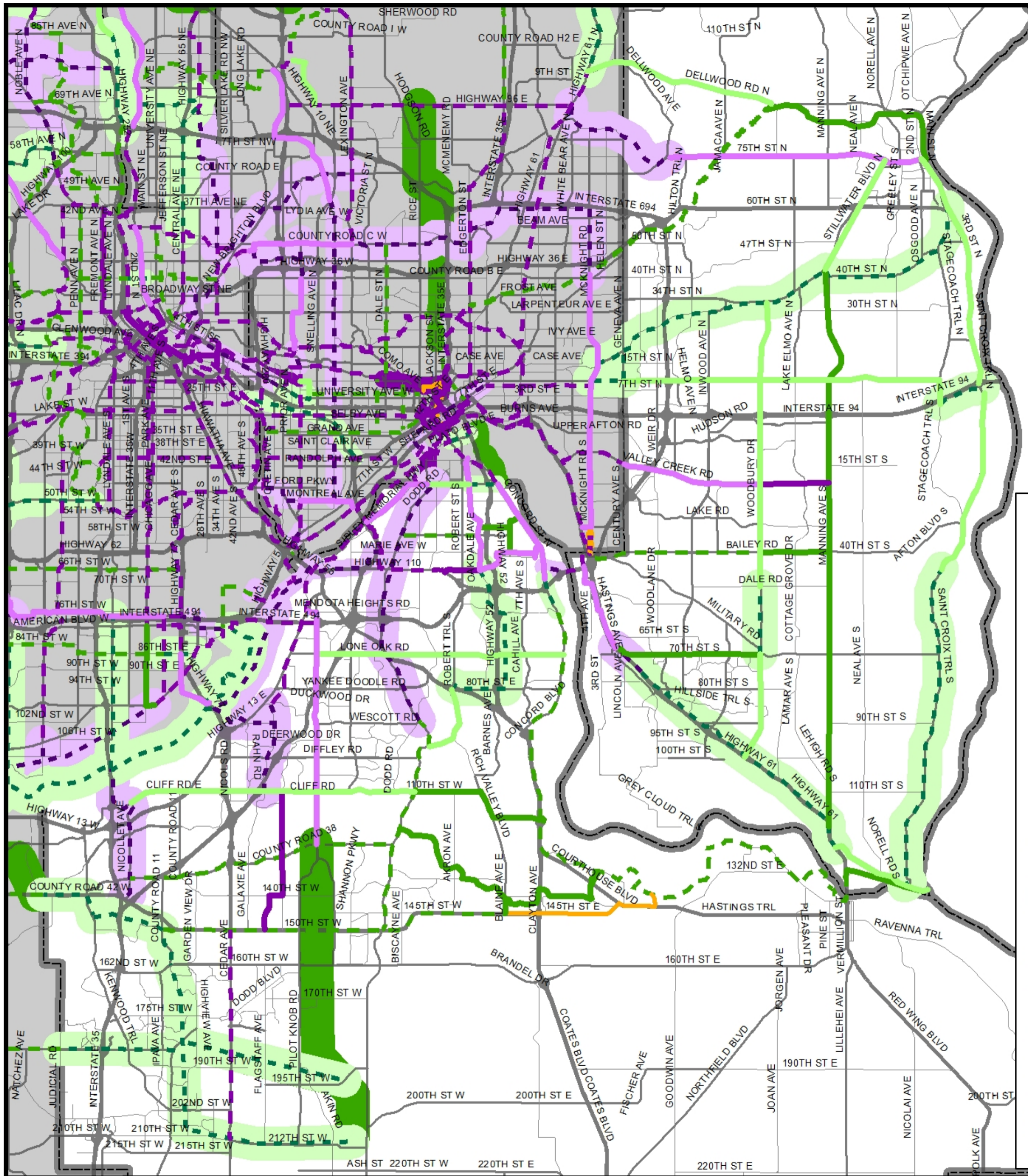
**RBTN Existing Corridors**

- Tier 1 Corridor
- Tier 2 Corridor

**RBTN New Corridors**

- Tier 1 Corridor
- Tier 2 Corridor

# Dakota & Washington Co. New/Shifted Corridors



### Map 3 Legend

**Existing and Designated Alignments**

- Tier 1 Alignments
- Tier 2 Alignments
- Deleted Alignments

**New, Moved and Deleted Alignments**

- Tier 1
- Tier 2
- Deleted Alignments

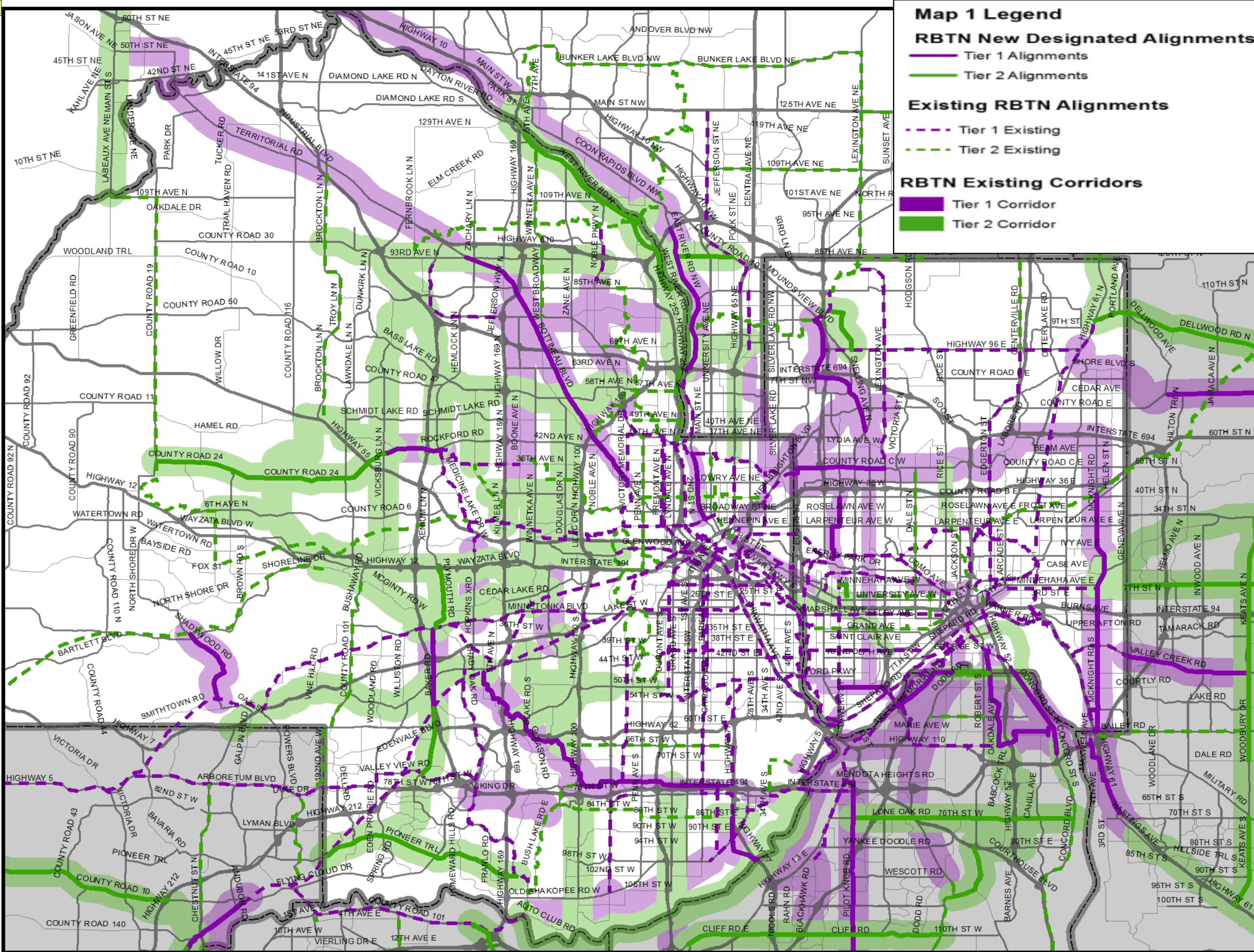
**RBTN Existing Corridors**

- Tier 1 Corridor
- Tier 2 Corridor

**RBTN New Corridors**

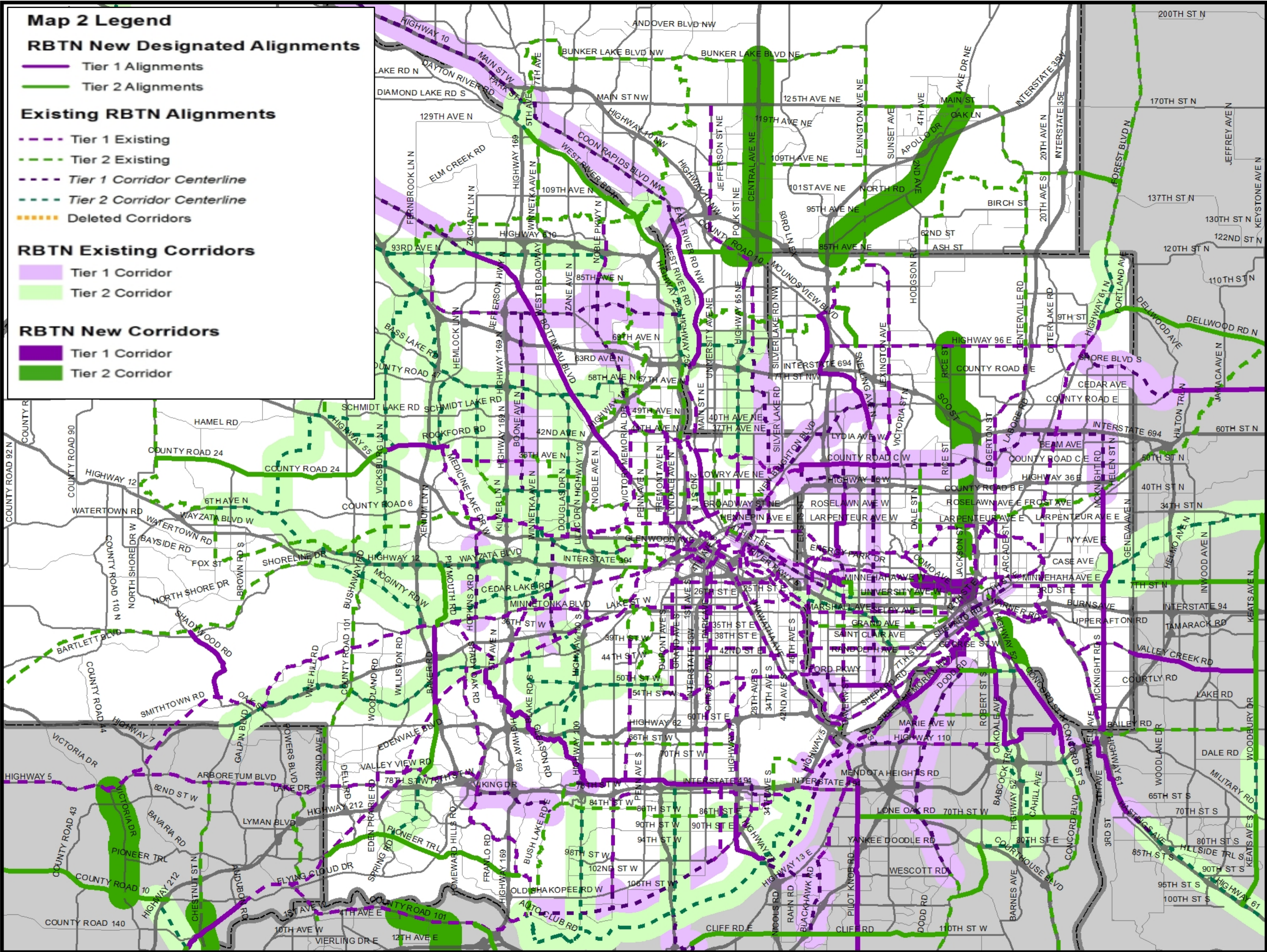
- Tier 1 Corridor
- Tier 2 Corridor

# Dakota/Washington County New/Removed Alignments



Map 3

# Hennepin/Anoka/Ramsey Co. Alignment Designations



**Hennepin/Anoka/Ramsey Co. New & Shifted Corridors**

### Map 3 Legend

#### Existing and Designated Alignments

- Tier 1 Alignments
- Tier 2 Alignments
- Deleted Alignments

#### New, Moved and Deleted Alignments

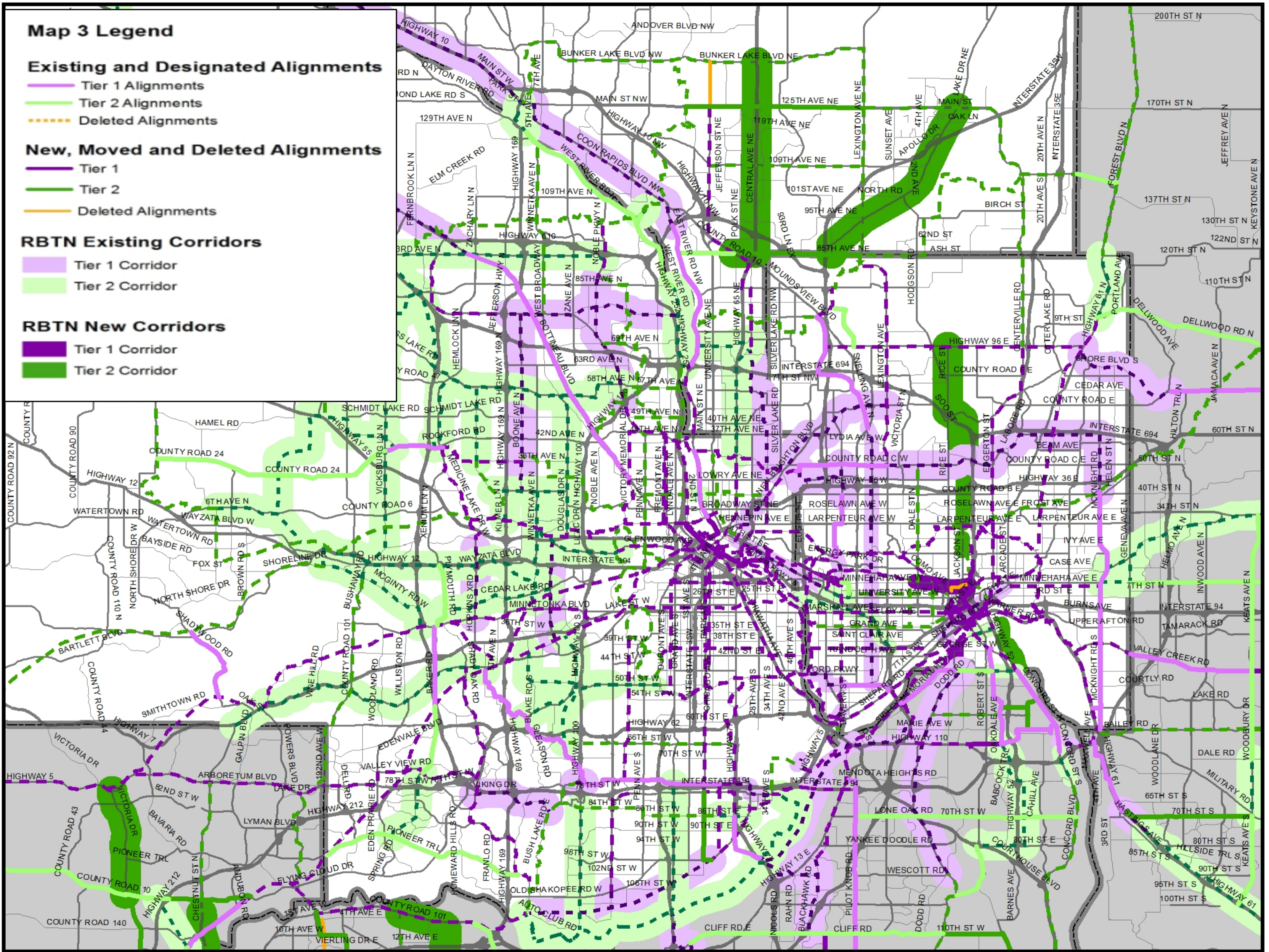
- Tier 1
- Tier 2
- Deleted Alignments

#### RBTN Existing Corridors

- Tier 1 Corridor
- Tier 2 Corridor

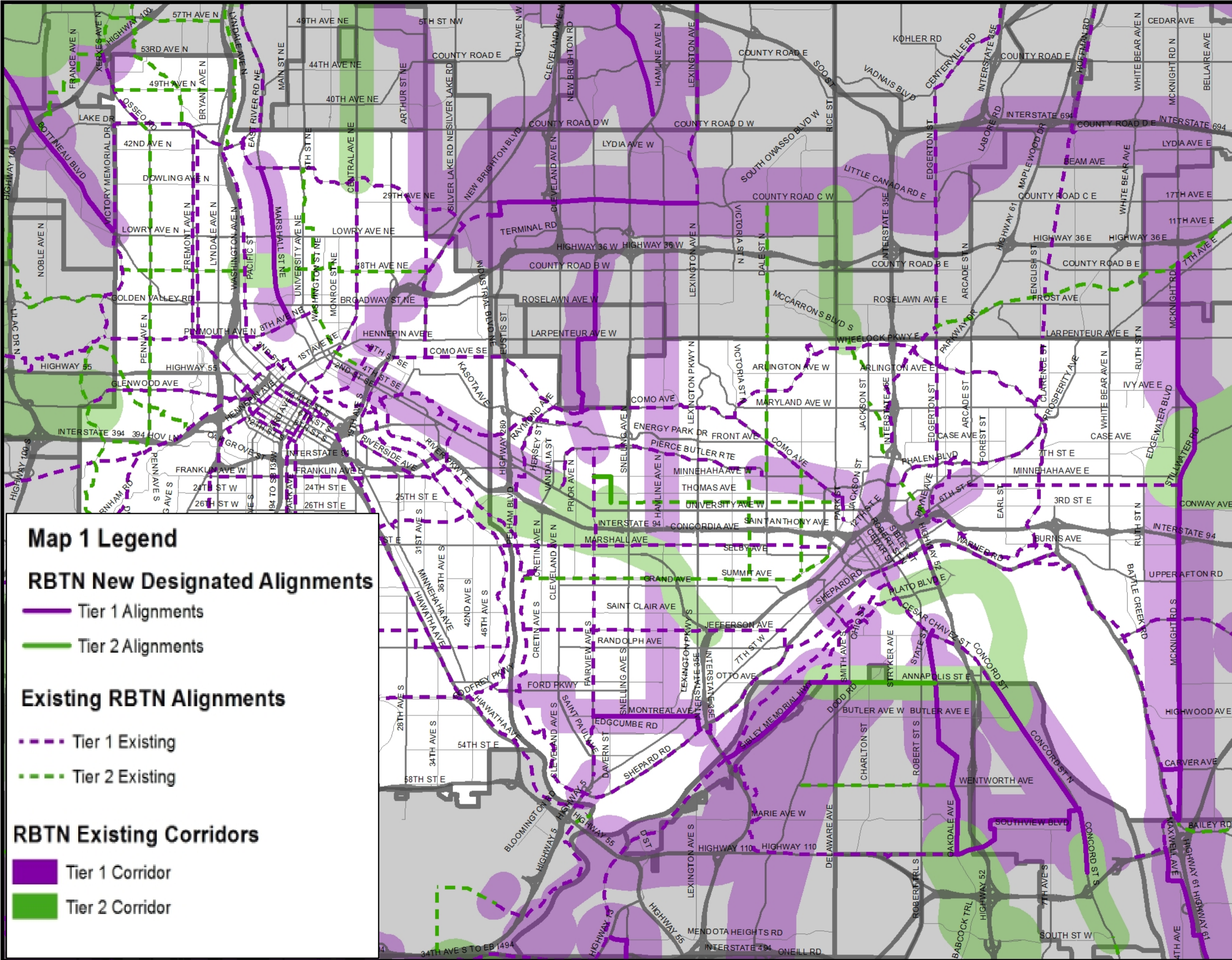
#### RBTN New Corridors

- Tier 1 Corridor
- Tier 2 Corridor

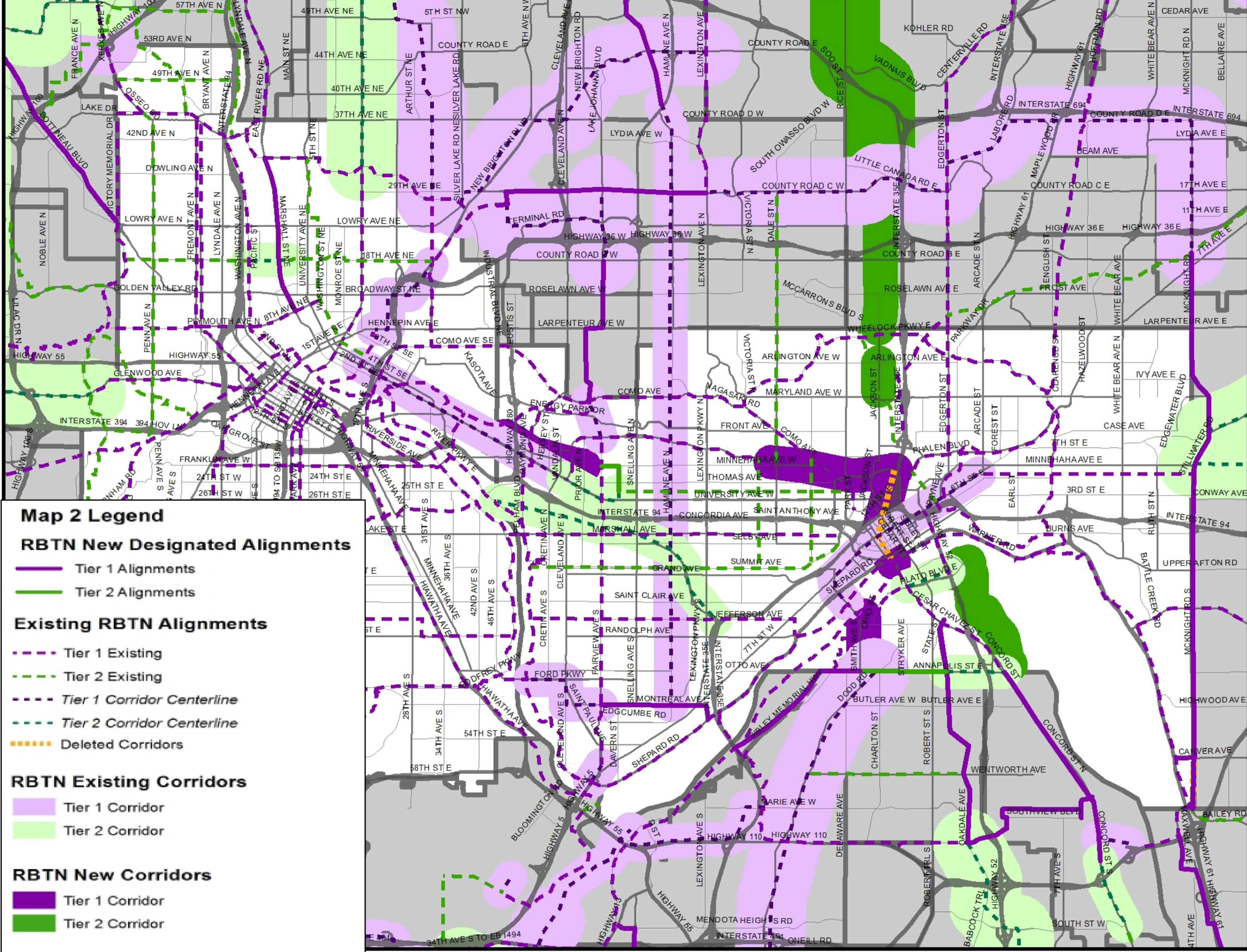


Map 3

# Hennepin/Anoka/Ramsey Co. New & Removed Alignments



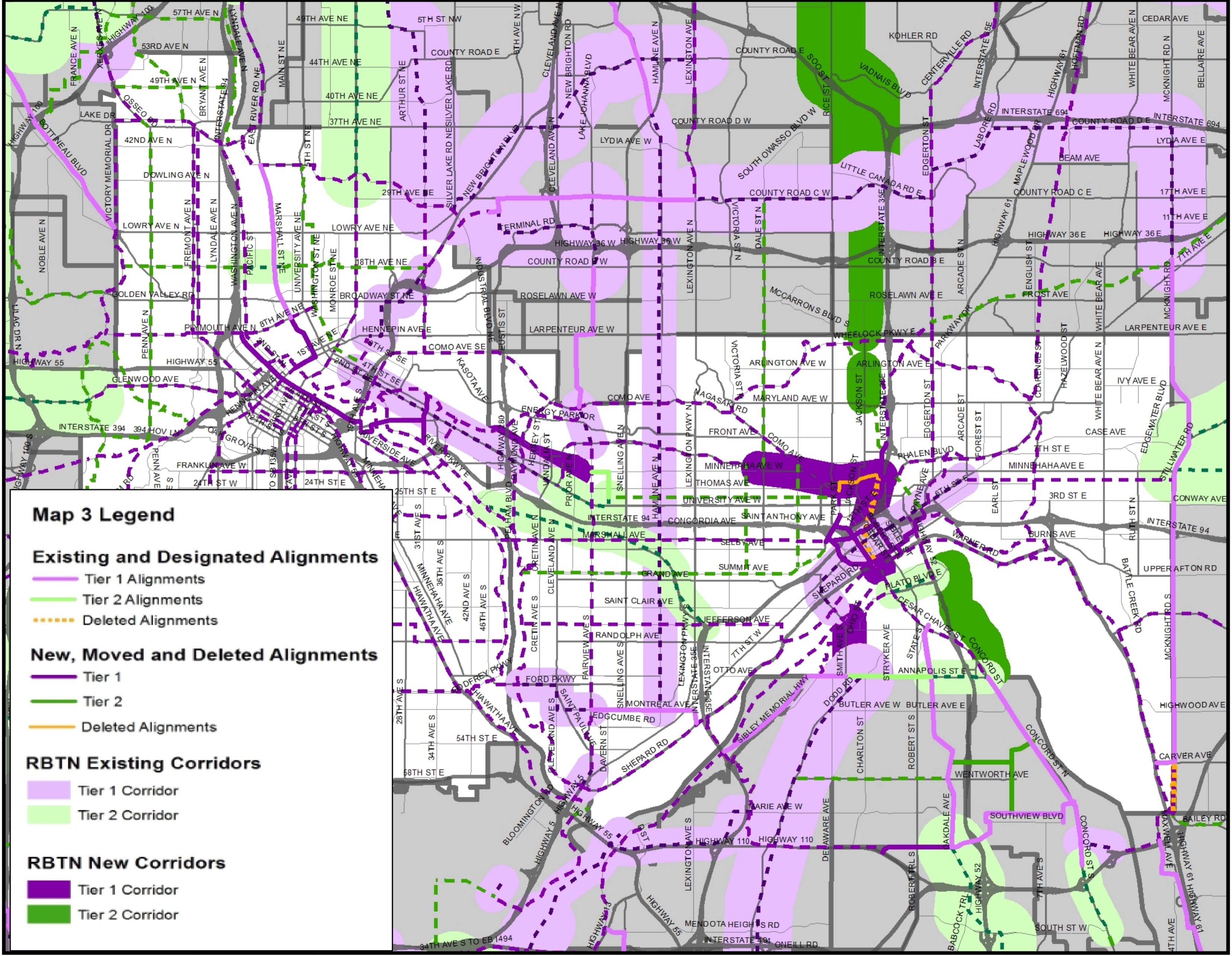
# Minneapolis/St Paul Designated Alignments



Map 2

# Minneapolis/St Paul New, Shifted & Removed Corridors





**Map 3 Legend**

**Existing and Designated Alignments**

- Tier 1 Alignments
- Tier 2 Alignments
- - - Deleted Alignments

**New, Moved and Deleted Alignments**

- - - Tier 1
- - - Tier 2
- - - Deleted Alignments

**RBTN Existing Corridors**

- Tier 1 Corridor
- Tier 2 Corridor

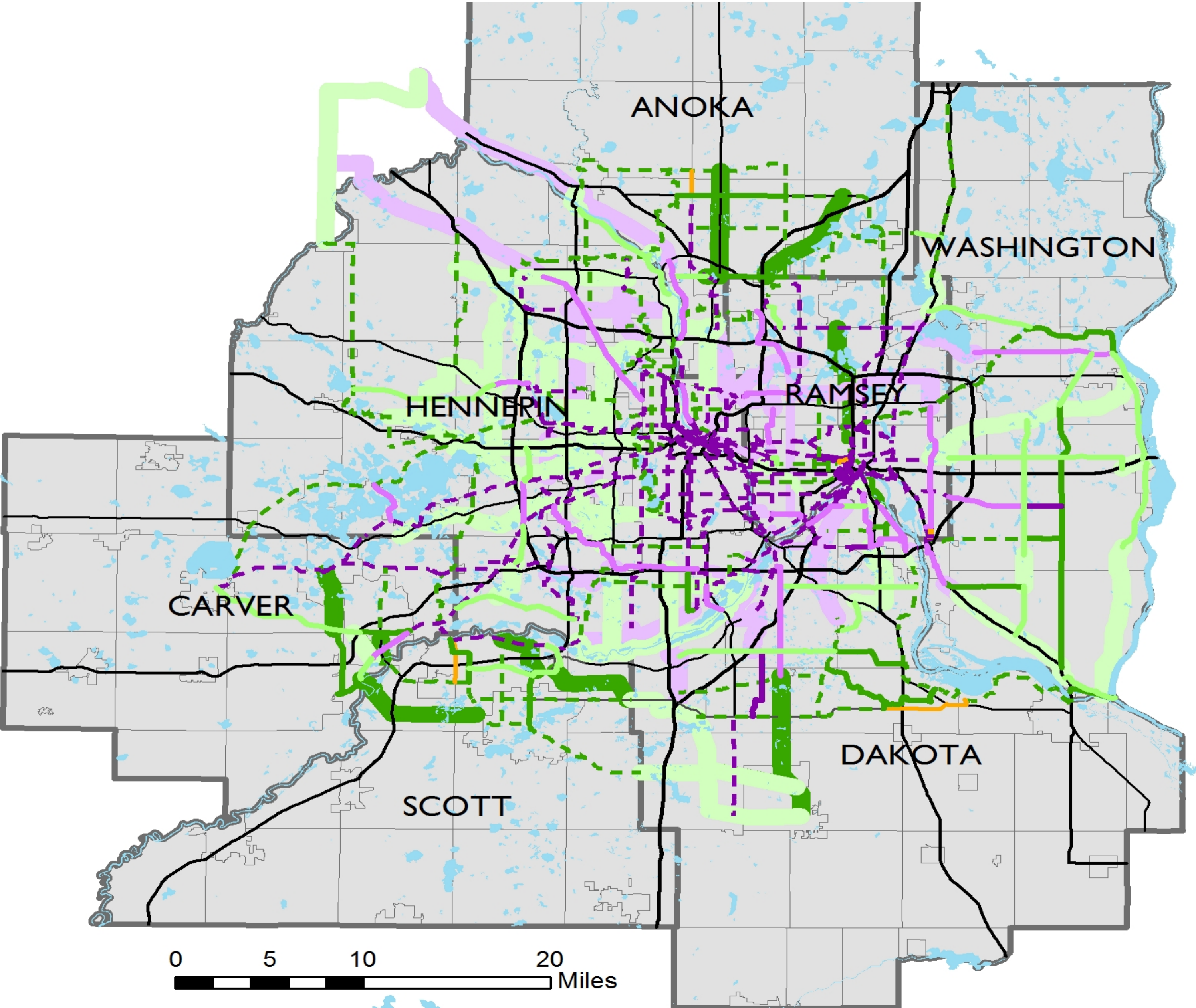
**RBTN New Corridors**

- Tier 1 Corridor
- Tier 2 Corridor

Map 3

**Minneapolis/St Paul New & Removed Alignments**

# Proposed RBTN with Cumulative Changes



# Next Steps

- Present changes to TAC & TAB
- Incorporate new summary map of proposed changes in draft TPP
- Draft text for bike/ped chapter describing changes since last plan.
- Present red-lined bike/ped chapter in November

Thank you

Questions or Comments?

Steven Elmer, AICP

[steven.elmer@metc.state.mn.us](mailto:steven.elmer@metc.state.mn.us)

651-602-1756

