

ACTION TRANSMITTAL – 2019-25

DATE: April 17, 2019
TO: TAC Planning
FROM: MTS Staff
PREPARED BY: Rachel Wiken, Planner, 651-602-1572
SUBJECT: Function Class Request for Ramsey County – Old Hwy 8
REQUESTED ACTION: Ramsey County requests approval from TAC to change Old Hwy 8 (CSAH 77) from Other Arterial to A-Minor Reliever. (*Change Request #1361*)
REQUESTED ACTION: That TAC Planning recommend to TAC to approve Old Hwy 8 (CSAH 77) as an A-Minor Reliever.

BACKGROUND AND PURPOSE OF ACTION: Ramsey County is requesting a change to Old Hwy 8 (CSAH 77) between Country Road (CR) D and 5th Ave in New Brighton. The requested change is from Other Arterial to A-Minor Reliever.

This section of roadway closely parallels I-35W, running approximately 0.4 miles to the west. To the south the road connects at a t-intersection with CR D (an A-Minor Augmentor). Just a short half block to the west, New Brighton Blvd (an A-Minor Reliever) continues to the south and west. On the north end, the road connects with 5th Ave, already an A-Minor Reliever. Adding this section of roadway as A-Minor Reliever would create a continuous, if slightly disjointed, A-Minor Reliever to the west of I-35W from US 10 to Hwy 36.

Old Highway 8 serves as a route for heavy commercial traffic and connects Downtown New Brighton with commercial areas to the north and south.

The City of New Brighton supports the change.

STAFF ANALYSIS: Staff supports the request since the segment is currently functioning as a reliever by removing traffic from I-35W during congested periods.

New Brighton is an Urban Community under Thrive2040 designations. Spacing is consistent for urban A-Minor roads, which should be spaced 1/2 to 1 miles based on Appendix D of the Transportation Policy Plan. A north-south A-Minor Augmentor runs along Silver Lake Rd, one mile to the west. An A-minor Reliever runs along Cleveland (CSAH 46), one half mile to the east of Old Hwy 8 and just to the east of 35W. It is acceptable to have an A-Minor Reliever on both sides of a principal arterial.

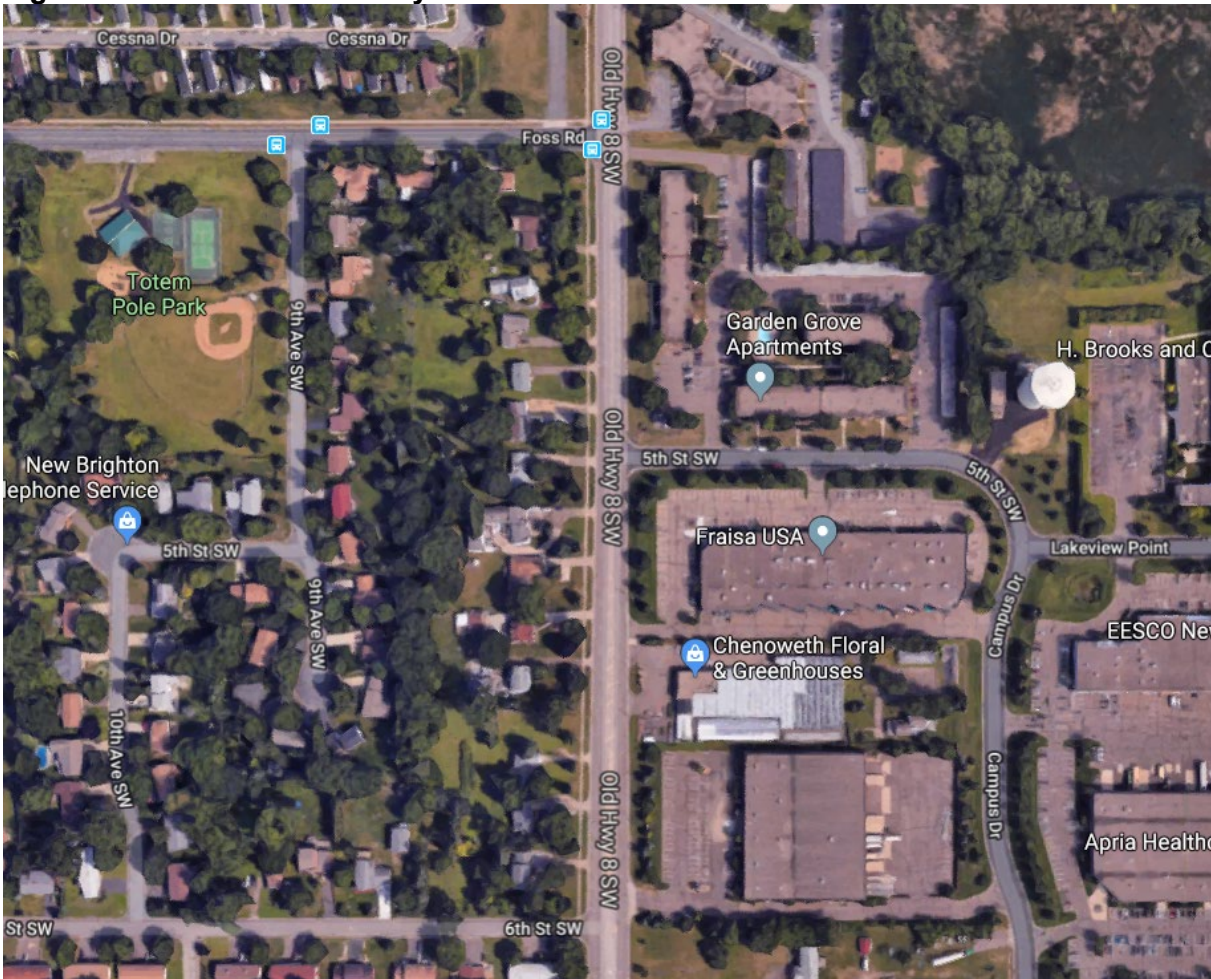
Like many urban A-Minors, access control is a concern. There are many commercial and residential properties with direct road access. Side streets are controlled by stop signs. Major intersections are controlled by stop lights, with one 4-way stop.

Figure 1: Commercial access along Old Hwy 8
Looking north at 5th St NW



Source: Google Streetview

Figure 2: Residential Driveways



Source: Google Maps

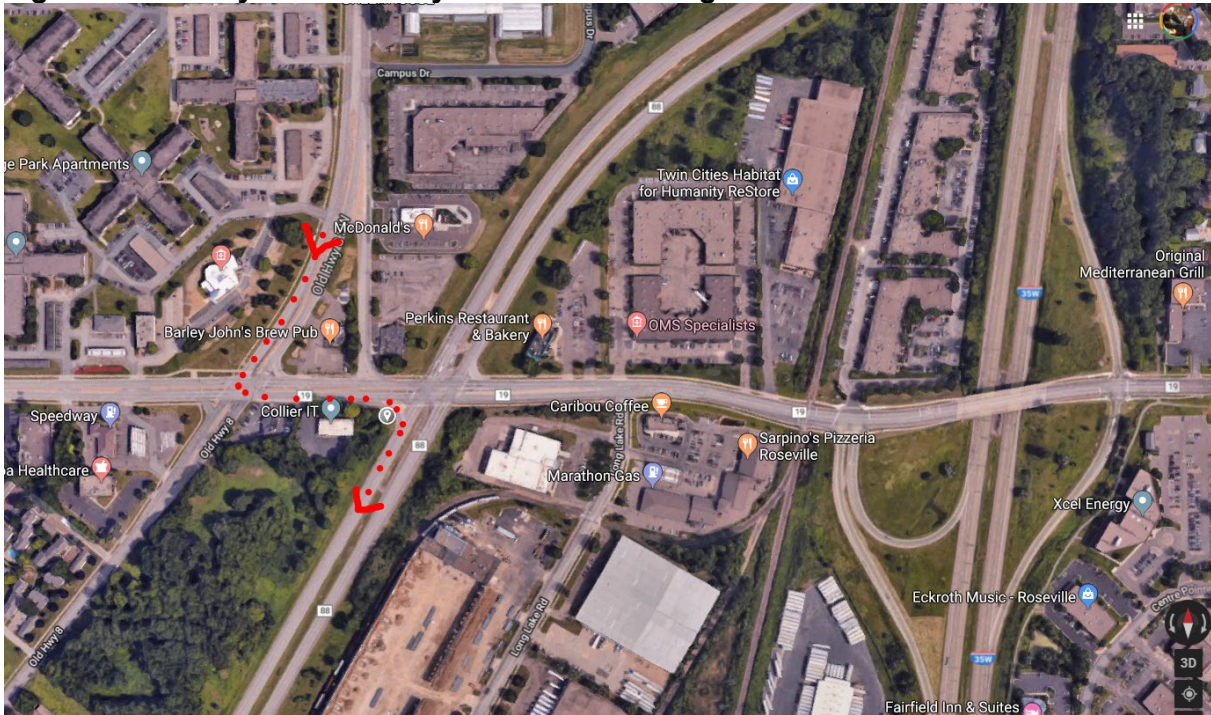
Appendix D of the TPP outlines criteria and characteristics for functional class roads. For A-Minor Arterials in the urbanized area, trips should be of medium length (2-6 miles) or longer trips to access the PA network. Using Streetlight Insights data from 2017, MTS staff ran an analysis of this section and several other A-Minor relievers in the northern Metro area. For Old Hwy 8, only 5% of trips were shorter than 2 miles. Trips of 2-6 miles made up 28%, and 67% of trips were longer than 6 miles.

Other A-Minors had similar breakdowns in trip length, with some minor variations in shorter trip length. Old Hwy 8 was very close to the average for trip length over these segments in those three trip length categories (less than 2 miles, 2 to 6 miles, and more than 6 miles).

The route requires several turns to stay on the reliever alignment, especially the movement from southbound Old Hwy 8 to southbound New Brighton Blvd (Figure 3). Staff has concern over whether traffic can be moved safely and efficiently along the Reliever route, or if traffic would continue southbound beyond County Road D on Old Hwy 8, which is currently a local road with only two stop signs before Old Hwy 8 and New Brighton Blvd (Figure 4). It seems possible that some traffic may continue southbound on Old Hwy 8 to avoid a left turn during congested times.

MTS staff and MnDOT support the functional class change given that the route is currently functioning as a reliever.

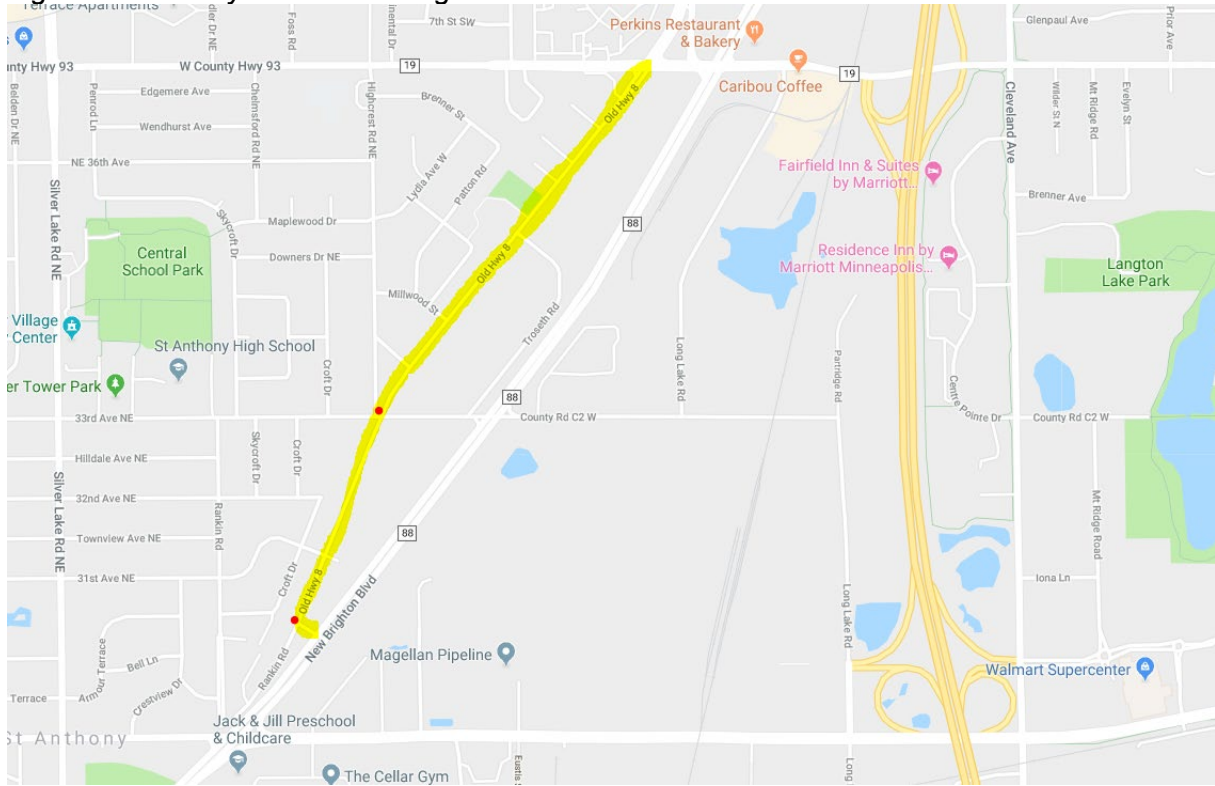
Figure 2: Old Hwy 8 and County Road D Interchange



Source: Google Maps

Note: Traffic heading southbound on Old Hwy 8 would need to turn left onto County Road D, and then right onto New Brighton Blvd (CSAH 88).

Figure 4: Old Hwy 8 and New Brighton Blvd



Source: Google maps

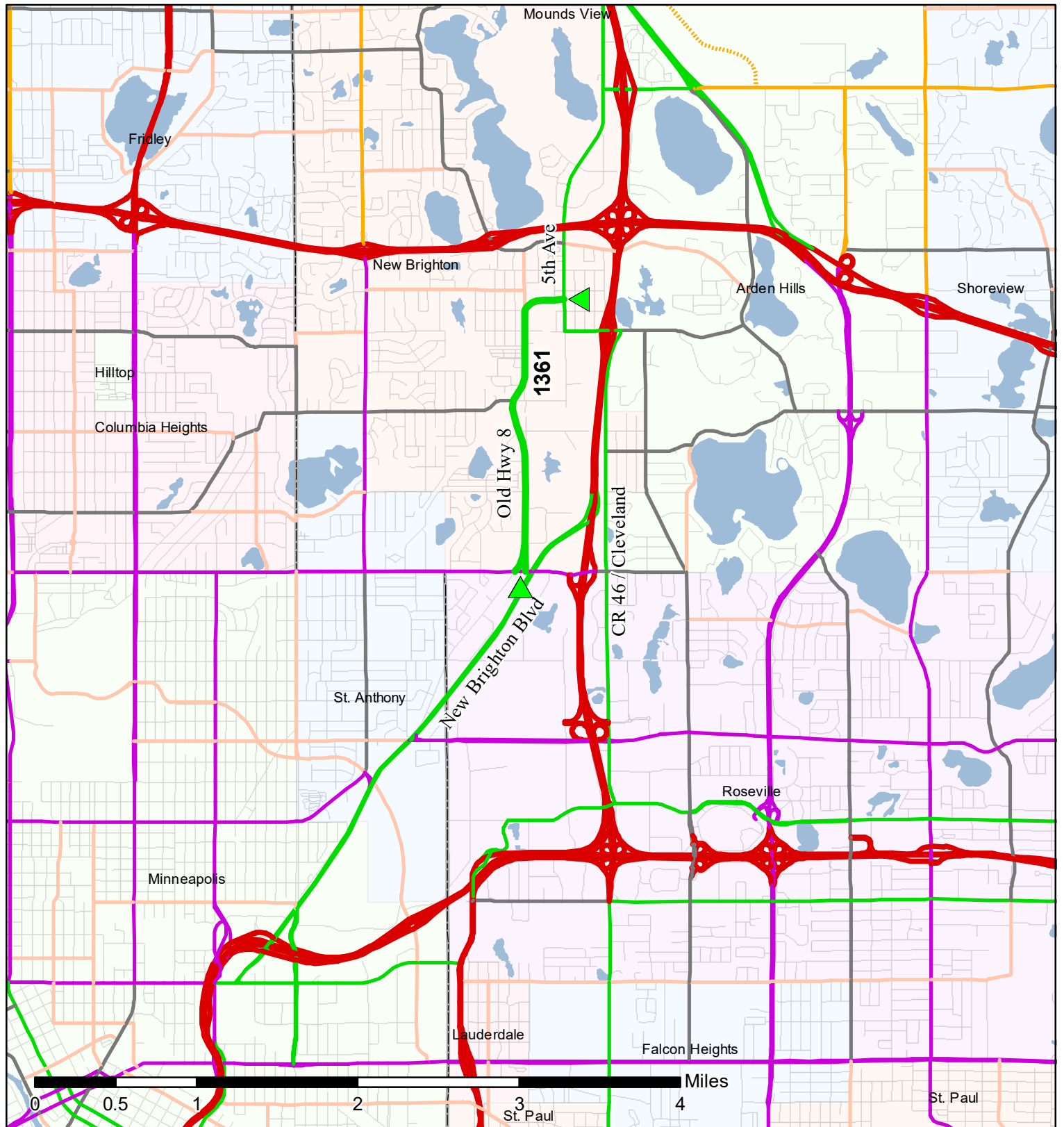
Note: Old Hwy 8 (in yellow) only has two stop signs (red dots) before joining New Brighton Blvd.

ROUTING

TO	ACTION REQUESTED	DATE COMPLETED
TAC Planning	Review & Recommend	
Technical Advisory Committee	Review & Recommend	

Functional Class Roads Change Requests Ramsey County

ID# 1361



Existing Regional Functional Class Roads

- Principal Arterial
- Other Arterial
- Major Collector
- Minor Collector
- A Minor Augmentor
- A Minor Reliever
- A Minor Expander
- A Minor Connector

Planned Regional Functional Class Roads

- Principal Arterial
- Other Arterial
- Major Collector
- Minor Collector
- A Minor Augmentor
- A Minor Reliever
- A Minor Expander
- A Minor Connector

City / Township Boundaries

Street Centerlines

County Boundaries



Regional Functional Classification Change Request Form

ID Number: 1361

Date of Request: 4-16-19

Roadway Name: Old Highway 8

Roadway CSAH # 77

Roadway MSA #

Roadway County Rd #

Request Type: Existing

Functional Classification Information:

Existing Roadway

Current Classification: B Minor

Requested Classification: A Minor Reliever

If other:

Planned Roadway

Current Classification: -----

Requested Classification: -----

If other:

Planned to existing Contingent Conditions:

Other / Explain:

Request Information:

Change Start Location: County Road D, CSAH 19

Change End Location: 5th Avenue NW, CSAH 77

Length of Requested Change (Miles): 1.86

Dependent on other Requested Changes: No

Road name(s) or ID Number(s) of dependent requests:

Involves other jurisdictions (Yes) If "yes" please attach letter(s) of support

Purpose of Change: Please explain rationale for requested Change

This segment of Old Highway 8 is a gap in the I-35W reliever network. South of the requested change, CSAH 88 (also a segment of former Trunk Highway 8) is classified as a reliever and at the north terminus of the request, Old Highway 8 is also classified as a reliever. This segment serves as a route for heavy commercial traffic, as well as commuter traffic, to access the adjacent Principal Arterials, I-35W and I-694, as well as providing a parallel route to I-35W. The route's importance was underscored during MnDOT's evaluation of traffic impacts for the I-35W MnPASS project now under construction. That evaluation showed a direct correlation between congestion on I-35W and increased traffic on Old Highway 8. This interrelationship is the basis for our request to reclassify this road segment as a Class A Minor Arterial- Reliever.

----- Required for B-Minor, A-Minor and PA Requests -----

Criteria: Illustrate how the requested change to a roadway functional classification complies with the following criteria:

Place Connections: In addition to the connections to interstate highways discussed above, the route provides connections to Long Lake Regional Park, between the downtown areas of St. Anthony Village, New Brighton, and Mounds View, and a direct link to downtown Minneapolis via CSAH 88. The area adjacent to the road is a mix of commercial, industrial,

Regional Functional Classification Change Request Form

ID Number: 1361

Date of Request: 4-16-19

and residential uses. Significant development is planned along the corridor, and Ramsey County and the City of New Brighton have been working together to plan develop plans to modernize the road way and manage access to better accommodate this development.

Spacing: The route is roughly a half-mile west of and parallel to I-35W.

Management: Old Highway 8 is managed by Ramsey County as a minor arterial highway.

System Connections & Access Spacing: Old Highway 8 provides connections to I-35W via interchanges at County Road D, County Road E2 (5th Street NW), and CSAH 96, as well as to I-694 via 10th Street NW and to CSAH 10 (Mounds View Boulevard). A less direct connection to I-35W is provided via the County Road H (CSAH 9) interchange. As with many older arterials, access management is a concern. Ramsey County and the City of New Brighton are committed to working with developers and existing businesses to consolodate and close accesses to preserve the function of this route.

Trip Making Services: Old Highway 8 provides an alternate route to I-35W during congestion, construction, and incidents. It connects the business districts of St. Anthony Village, New Brighton, and Mounds View, as well as providing an alternate route to I-35W to downtown Minneapolis via CSAH 88, which is also a segment of Old Trunk Highway 8. Long Lake Regional Park is located adjacent to Old Highway 8, north of this segment, and is accessed from Old Highway 8.

Mobility vs. Land Access: Redevelopment being planned adjacent to the route provides an opportunity for the City and County to manage access for closer conformance with minor arterial standards. Ramsey County is working to replace Bridge No. 4533, near the northeast end of this segment so that it will accommodate 10-ton axle loads.

IF request impacts the A-Minor Arterial Sub-Classification, provide these attributes:

(from Table D-7 in TPP, http://www.metrocouncil.org/planning/transportation/TPP/2008/D_FunClass.pdf)

Use:

Location:

Trip Length:

Problem Addressed:

(Optional) Typical Characteristics: Providing the following to support the request

Intersection Treatments: Intersections are controlled by side-street stops, the exceptions being all-way stop control at 1st Street NW and traffic signal control at County Road D and at 5th Avenue NW.

Regional Functional Classification Change Request Form

ID Number: 1361

Date of Request: 4-16-19

Present AADT: 10,400

Estimated Future AADT/Year:

Source of Estimated AADT/Date:

Posted Speed: 40 MPH between County Road D and 8th Avenue NW; 30 MPH between 8th Avenue NW and 5th Avenue NW.

----- **Required for All Requests** -----

MAP: Please attach an 8.5 by 11 map of the requested change. Please include all appropriate labels and highlight the roadway in question.

Contact Information:

Agency/City/County: Ramsey County Public Works

Contact Person: Joseph Lux

Phone: 651-266-7114

Fax: 651-266-7110

Email: joseph.lux@co.ramsey.mn.us

Address: 1425 Paul Kirkwold Drive

City: Arden Hills

State: MN

Zip: 55112

----- **Committee Staff ONLY** -----

Staff Recommendation:

Consent Approval: -----

Technical Correction: -----

Staff Recommendation:

Potential Issues:

Change Tracking:

TAC Planning Record of Decision:

Date:

TAC Record of Decision:

Date:

TAB Record of Decision (PA ONLY):

Date:

Mn/DOT Notification:

Date:

Geography Recorded: -----

Date:

Previous Action ID:

Date:



January 14, 2019

Mr. Joe Lux, Senior Transportation Planner
Ramsey County Public Works
1425 Paul Kirkwold Drive
Arden Hills, MN 55112-3933

RE: Functional Class Change
Old Highway 8

Dear Mr. Lux:

The City of New Brighton supports Ramsey County efforts to change the classification of Old Highway 8 between County Road D and 5th Avenue NW from a Class B Arterial to a Class A Minor Arterial –Reliever. Old Highway 8 supports local and regional traffic. Local redevelopment will be designed to reduce traffic impacts, but future roadway improvements along Old Highway 8 will improve local and regional transportation systems. The City will continue to work collaboratively with Ramsey County, and the first step is reclassification of this section of roadway. If you need any additional support for your proposed change, please do not hesitate to contact us.

Sincerely,

A handwritten signature in blue ink that reads 'Craig Schlichting'.

Craig G. Schlichting, P.E.
Director of Community Assets and Development

Old Highway 8 Reliever Request

Map Produced April 1, 2019 by Ramsey County Public Works



LEGEND

- Principal Arterial
- A Minor Augmentor
- A Minor Reliever
- A Minor Expander
- A Minor Connector
- Other Arterial
- Major Collector
- Minor Collector
- Proposed A Minor Reliever

* The proposed A Minor Reliever is originally classified as "Other Arterial"

The information on this map is a compilation of Ramsey County Records. THE COUNTY DOES NOT WARRANT OR GUARANTEE THE ACCURACY OF THIS DATA. The county disclaims any liability for any injuries, time delays, or expenses you may suffer if you rely in any manner on the accuracy of this data.