



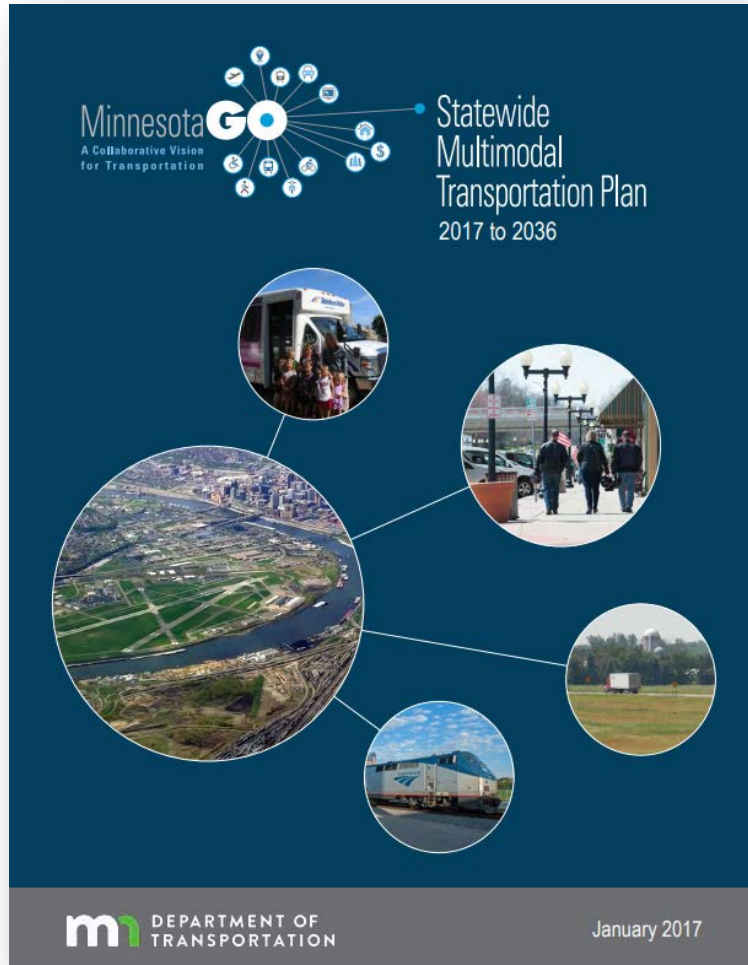
Advancing Transportation Equity

TAC Planning

November 12, 2020

- Background on MnDOT's equity work
- Equitable contracting and engagement processes

MnDOT's Commitment to Equity



2017 Statewide Multimodal Transportation Plan

Study how transportation affects equity and identifying transportation strategies and approaches that will meaningfully reduce disparities

Equity Is Far Reaching and Involves all parts of MnDOT

Workforce

Contracting

Engagement

**Construction
Impacts**

**Transportation
Services & Programs**

**Connectivity,
Access & Safety, etc.**

**Health, Wealth,
Education, etc.**

And more!

Recent and Current Planning and Programming Work



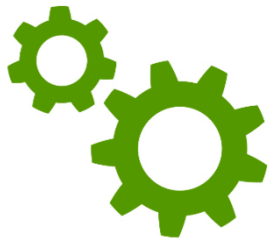
Research Roadmap

Complete



Community Conversations

In Process



Programs and Process Review

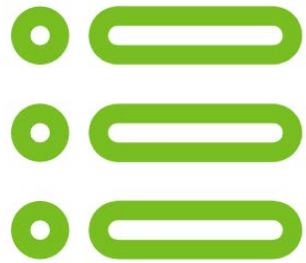
Ongoing



Performance Measurement

Began July 2020

Recent and Current Planning and Programming Work



Equity work
inventory



Equity in the
SMTP



Metro area
stakeholder
interviews



Equitable
contracting and
engagement

2022 Statewide Multimodal Transportation Plan

- Joint equity work group with Minnesota State Highway Investment Plan
- Focus
 - Develop working definition for transportation equity
 - Ensure equity considerations for both process and outcomes
 - Make recommendations to advisory committees for both plans and MnDOT leadership to intentionally account for equity in statewide plan

Community Conversations Early Learnings

- Build capacity for equitable practices and decisions
- Assist with marketing and outreach for public transit services
- Continue to build relationships with those traditionally not engaged in transportation conversations
- Contract with community partners for equitable engagement
- Move beyond research to implementation

Metro Area Pre-Scope Outcomes

1. Collaborate with community partners to develop and implement an equitable engagement pilot program.
2. Develop the program around goals.
3. Capacity building in MnDOT should lay the groundwork to institutionalize equitable engagement practices.
4. Capacity building in local government should recognize the wide variety of community experiences and contexts.
5. Capacity building in CBOs should be driven by community needs and priorities.

Equitable Contracting and Engagement

- How can we make MnDOT contracting easier for CBOs and nonprofits?
- How can we employ more engagement specialists?
- How can we equitably compensate our partners for their time and energy?

Equitable Contracting and Engagement

Contract requirements

- Create model language

Pre-qualified work types

- Add new types

Ambassadors

- Develop new positions and recruiting practice

Grant-making

- Compensate community members

Thank you!

[https://www.dot.state.mn.us/planning/program/
advancing-transportation-equity/](https://www.dot.state.mn.us/planning/program/advancing-transportation-equity/)