

Statewide Multimodal Transportation Plan



MINNESOTA **GO**

TAC Planning

November 12, 2020

Presentation Purpose

- Project overview
- 2017 engagement review
- Current activities

MINNESOTA GO

Planning Minnesota's
Transportation Future

Minnesota's multimodal transportation system maximizes the health of people, the environment and our economy

Minnesota GO 50-year Vision

What are we trying to achieve?

Statewide Multimodal Transportation Plan

How are we going to achieve it?

Modal and System Plans

What does that mean for each type of transportation?

< Considered by the State Highway Investment Plan >



Greater
Minnesota
Transit
Investment Plan



Pedestrian
Plan



Bicycle
Plan



State
Highway
Investment
Plan



Freight
System
Plan



Aviation
Plan



Rail
Plan



Ports &
Waterways
Plan

< Considered by the Freight System Plan >

Minnesota GO 50-year Vision

What are we trying to achieve?

MOST UPDATED
EVERY 5 YEARS

Statewide Multimodal Transportation Plan

How are we going to achieve it?

Modal and System Plans

What does that mean for each type of transportation?

< Considered by the State Highway Investment Plan >



Greater
Minnesota
Transit
Investment Plan



Pedestrian
Plan



Bicycle
Plan



State
Highway
Investment
Plan



Freight
System
Plan



Aviation
Plan



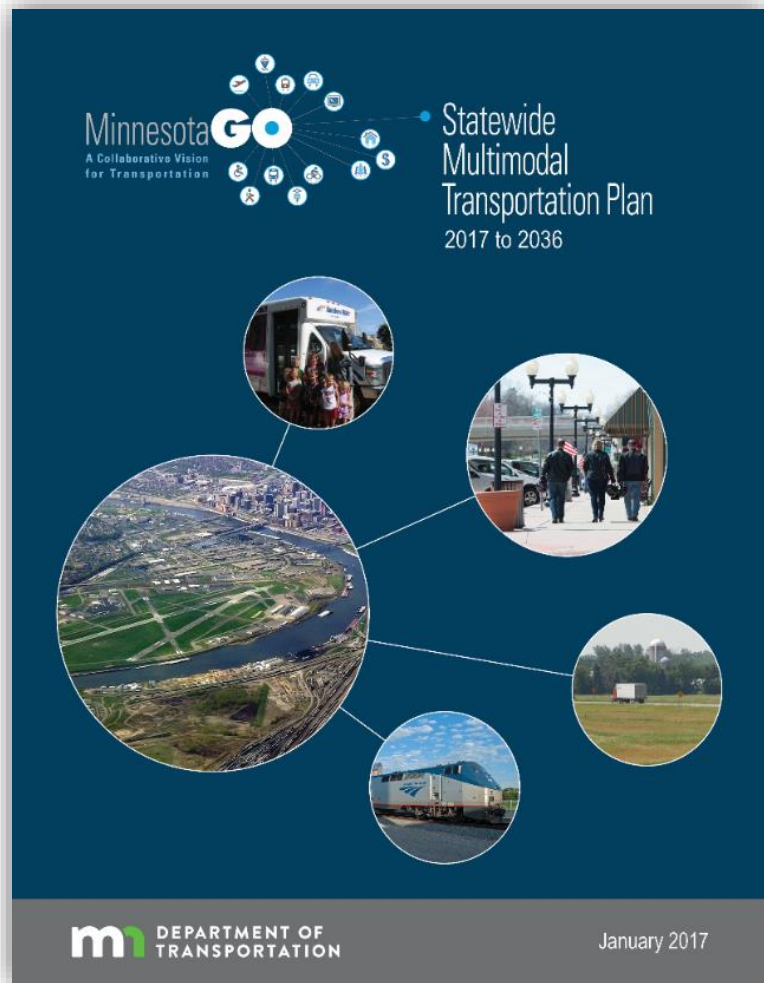
Rail
Plan



Ports &
Waterways
Plan

< Considered by the Freight System Plan >

Statewide Multimodal Transportation Plan



- Overarching objectives, strategies and performance measures for all modes
- Last adopted January 2017
- Next update due early 2022

2020 JANUARY **PROJECT BEGINS**
PLAN REVIEW AND TREND ANALYSIS BEGINS

AUGUST **PUBLIC LAUNCH** Engagement begins

NOVEMBER **STRATEGY DEVELOPMENT** Work groups start

2021 JANUARY **MNSHIP BEGINS**

JUNE **WORK PLAN** Draft for internal and committee review

SEPTEMBER Work groups end

2022 JANUARY **DRAFT PLAN** Released for comment

SPRING **FINAL PLAN** Plan adopted and implementation begins

IMPLEMENTATION

 PUBLIC
ENGAGEMENT



2017 SMTP Engagement Summary

Top Five Trends Across All Respondents



Aging Infrastructure



Urban & Rural Population Trends



Climate Change



Environmental Quality



Transportation Behavior

But different groups had different priorities

★ American Indian or Alaska Native, Ages 66+



★ Multiple Races



★ Ages 20 and under



★ American Indian or Alaska Native, Hispanic



★ Black or African American, Ages 20 and under



★ Black or African American, Hispanic



★ Ages 20 and under



Equity Review of Previous Engagement

- Communities experience transportation and health inequitably
- Completed additional analysis of previous input to review for comments about equity

What this means for the 2022 SMTP

Ask about

- People's access to:
 - Jobs, services and other destinations
 - Transportation options and experiences using them
 - Public input opportunities and transportation decision making
- Barriers created by transportation within their communities

What this means for the 2022 SMTP

Plan for

- Safe, convenient and affordable alternatives to driving
- Minimizing environmental impacts
- Meeting the transportation needs of low income and minority communities first

Other notes

- Use a health equity lens in setting SMTP policies
- Use a people-first planning approach

2022 Engagement Focus

- Where do we need to hear more?
- Where do we need to dig deeper?
- Where has the conversation changed a lot over the last five years?

Selecting Focus Areas

Identifying Focus Areas



Potential Areas of Focus



Climate Change



Equity



Cyber & Data Security



Changing Demographics

Asset Management

Mode Choice

Safety

What is directing this plan?

1 BACKGROUND INFORMATION

- Review MnDOT and partner plans
- Assess the 2017 SMTP work plan
- Review and analyze trends
- Summarize planning context

How will we guide ourselves moving forward?

2 POLICY DIRECTION

- Review and refine policy objectives and performance measures
- Develop strategies and work plan

What's next for MnDOT?

3 NEXT STEPS

- Implement the updated plan
- Update modal & system plans

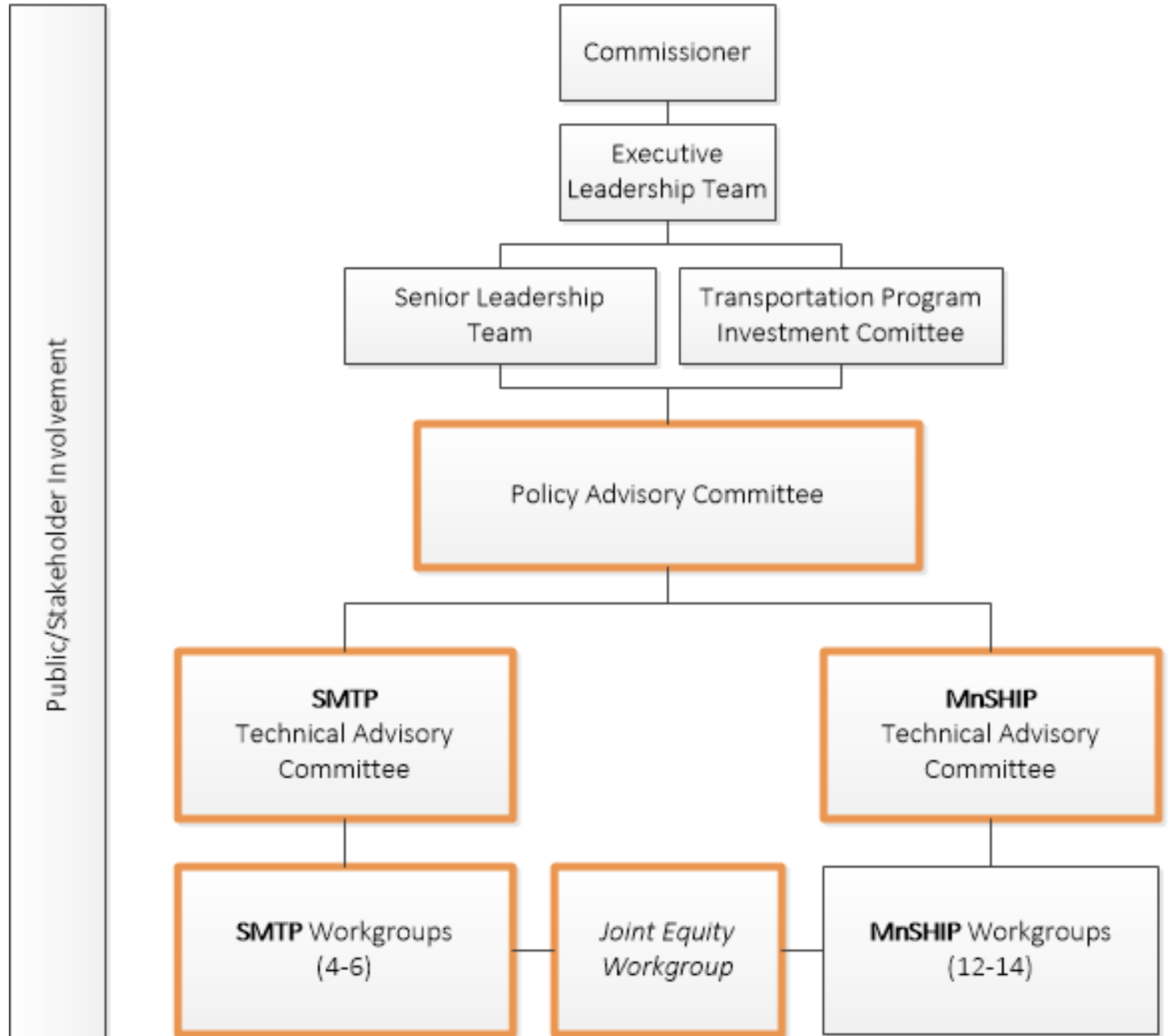
Public and Stakeholder Input Opportunities

Next Steps

Next Steps

- Finish project context and background information
- Establish advisory committees
- Collect comments for the Public Participation Plan
- Ask public and partners which transportation topics are of greatest concern

SMTP and MnSHIP Advisory Committee Structure



Input Opportunities

- Share your transportation story via a fun fill-in-the-blank activity
- Help us select up to six focus areas by completing this survey
- Comment on the Public Participation Plan
- Request a virtual presentation

www.minnesotago.org

Hally Turner, Project Manager

Hally.Turner@state.mn.us

651-366-3901

MINNESOTA  GO