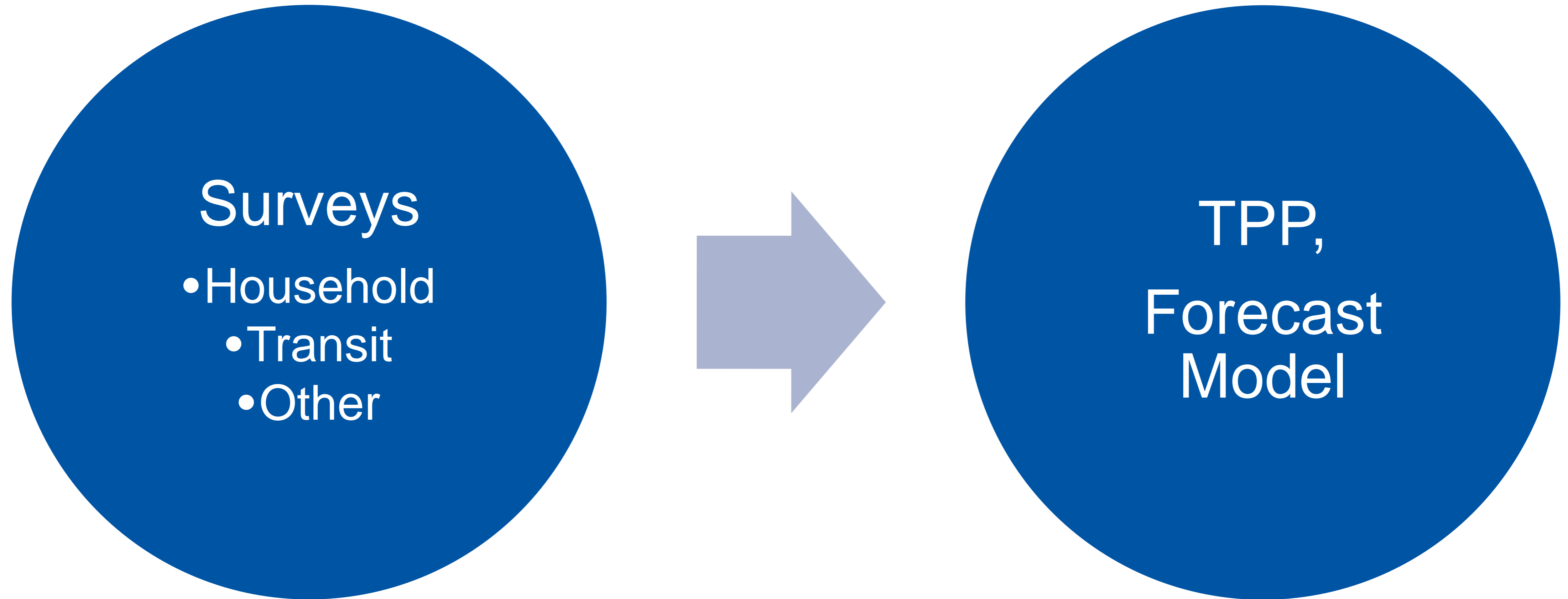


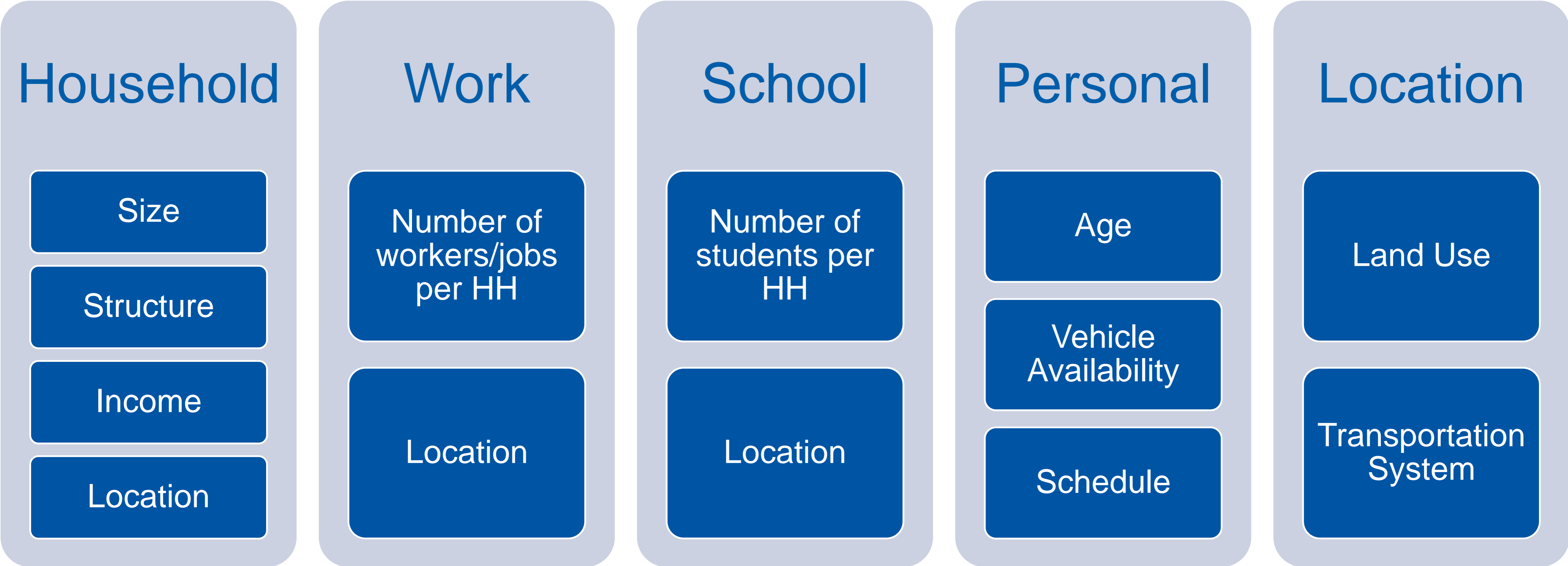
Travel Behavior Inventory 2019

Household Travel Survey

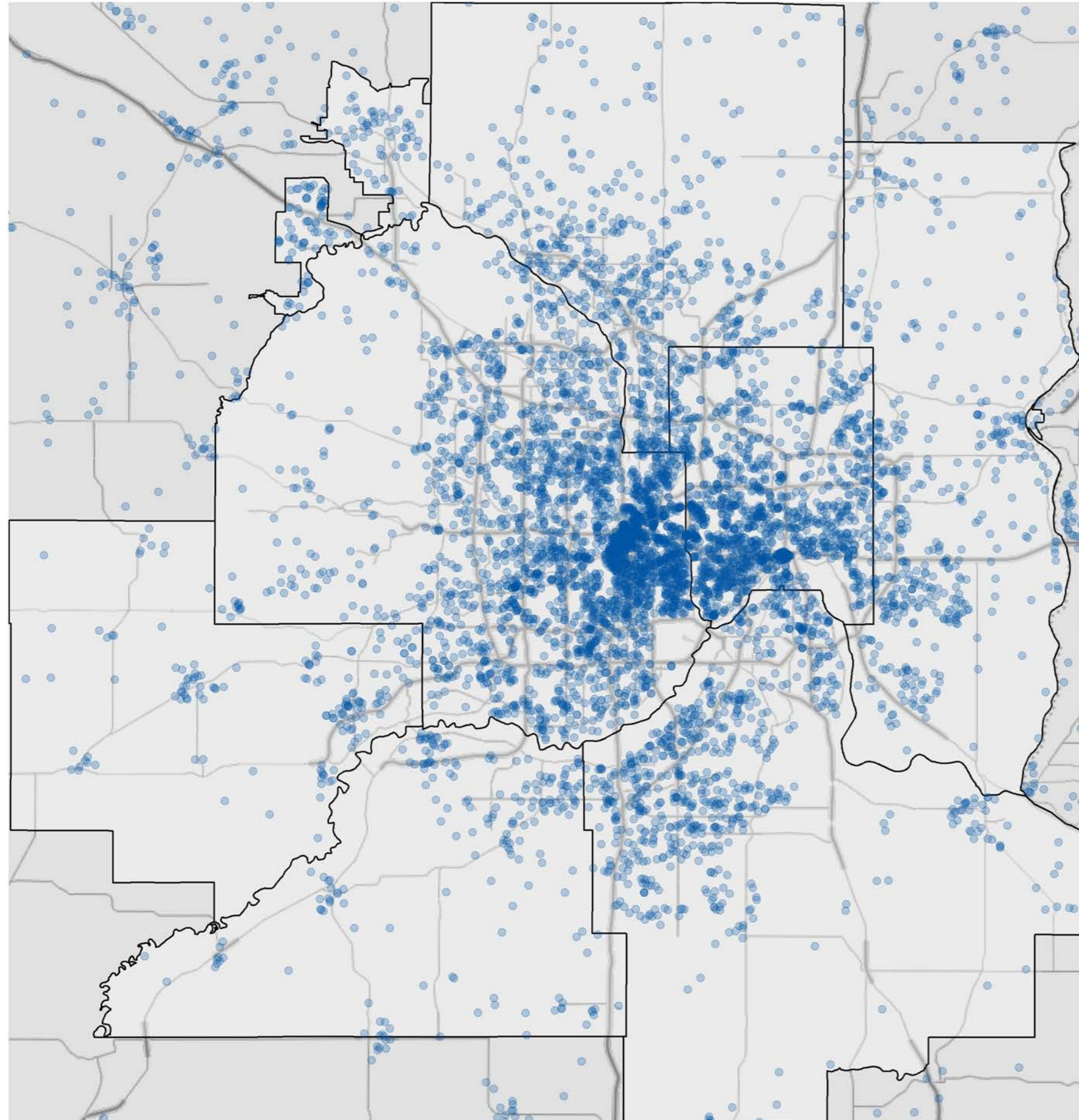
Travel Behavior Inventory



What determines how and how much we travel?



Households surveyed: 7,870



- October 2018-October 2019
- 7,870 households surveyed
- 5,366 responded using smartphone app (for one week)
- 2,504 used a one-day diary survey

- 58% Urban, 23% Rural or Rural-Ring
- 23% rent their home, 75% own
- 7% with no vehicle

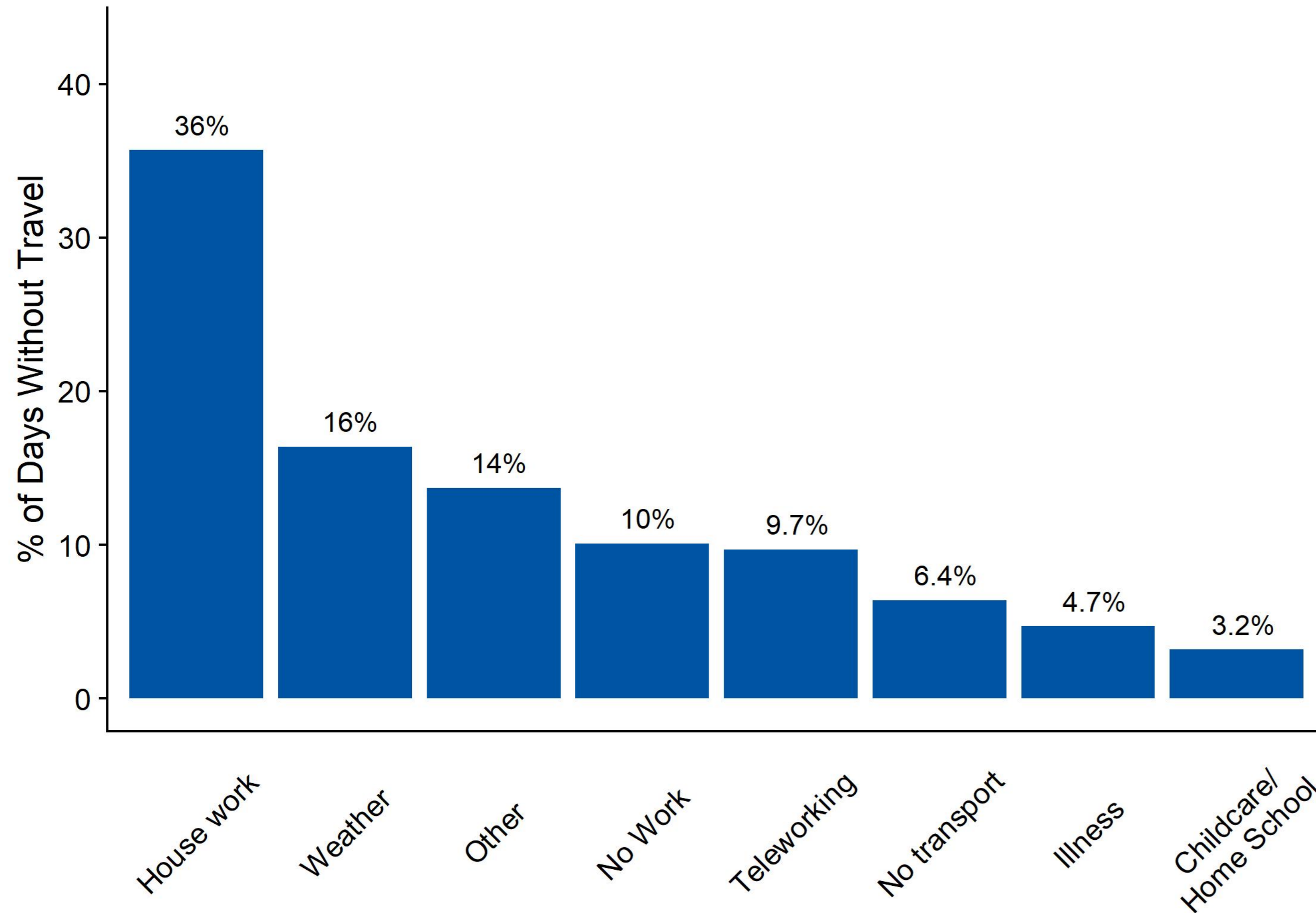
- Total of 16,222 people (2.1 people per household)

Trips taken: 350,638

- 81,468 trips to work
- 15,875 trips to the grocery store
- Three trips to play Bingo
- One trip to play organ at a wedding
- One hike up Machu Picchu
- One “errand” to the Cayman Islands



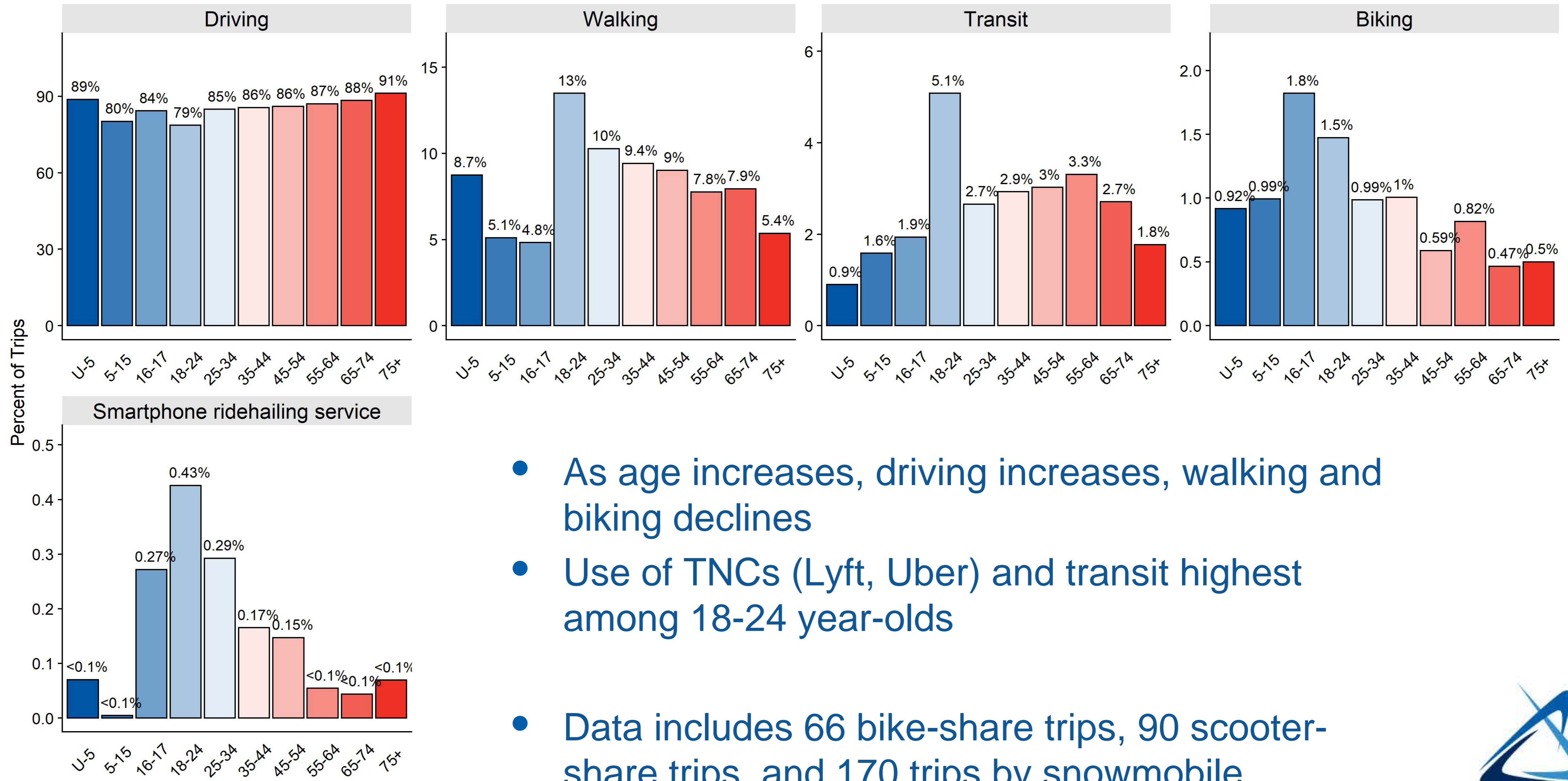
Trips not taken: days without travel



Of adults who did not travel on weekdays:

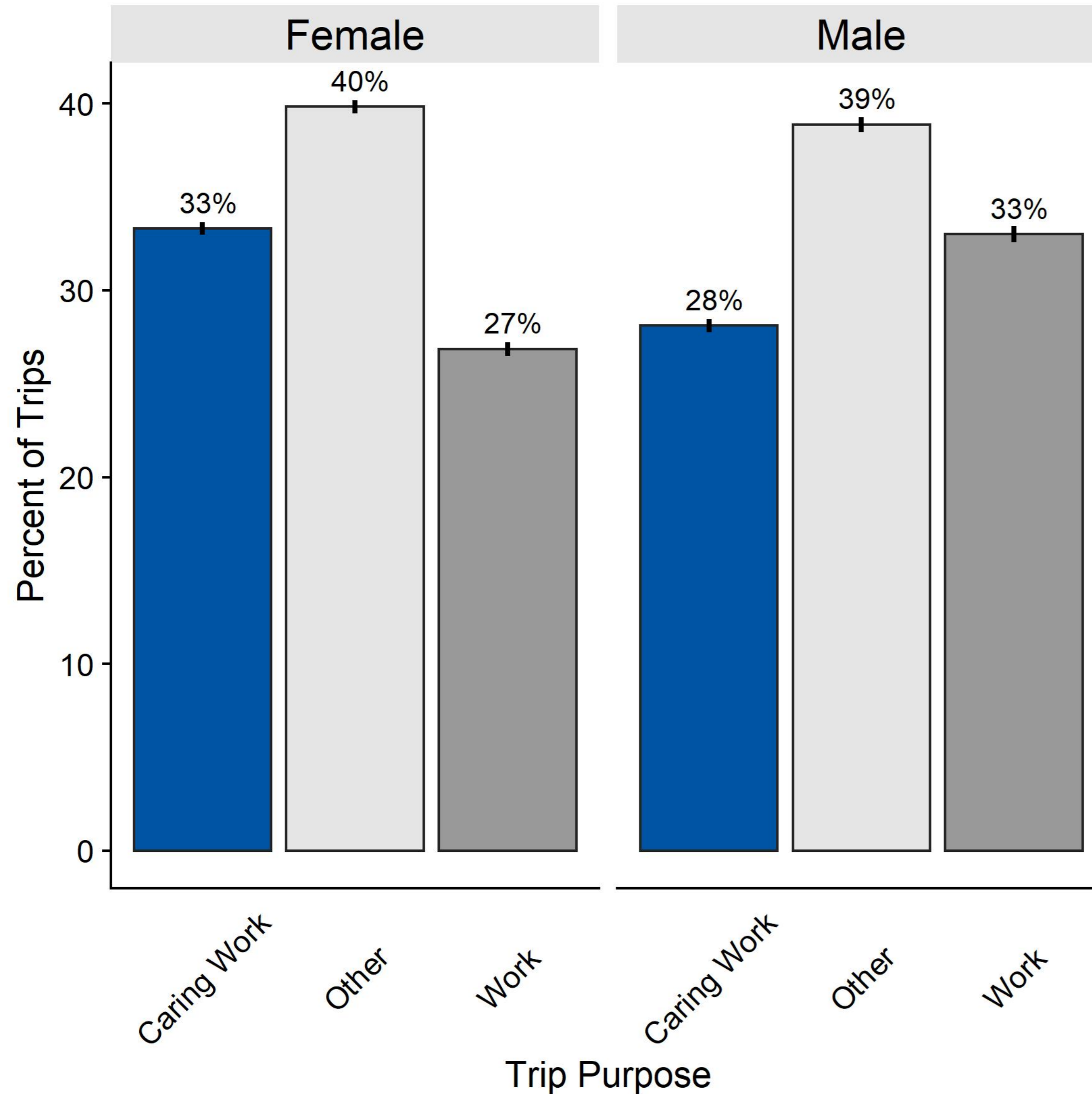
- **16%** did so because of weather (78% in Jan. and Feb. 2019)
- **10%** worked remotely
- **6%** lacked access to transportation
- **3%** were taking care of children (52% female; 37% male)
- **36%** were doing housework (48% female; 45% male)

How we get there: trip mode by age



- As age increases, driving increases, walking and biking declines
- Use of TNCs (Lyft, Uber) and transit highest among 18-24 year-olds
- Data includes 66 bike-share trips, 90 scooter-share trips, and 170 trips by snowmobile.

“Caring trips” by gender

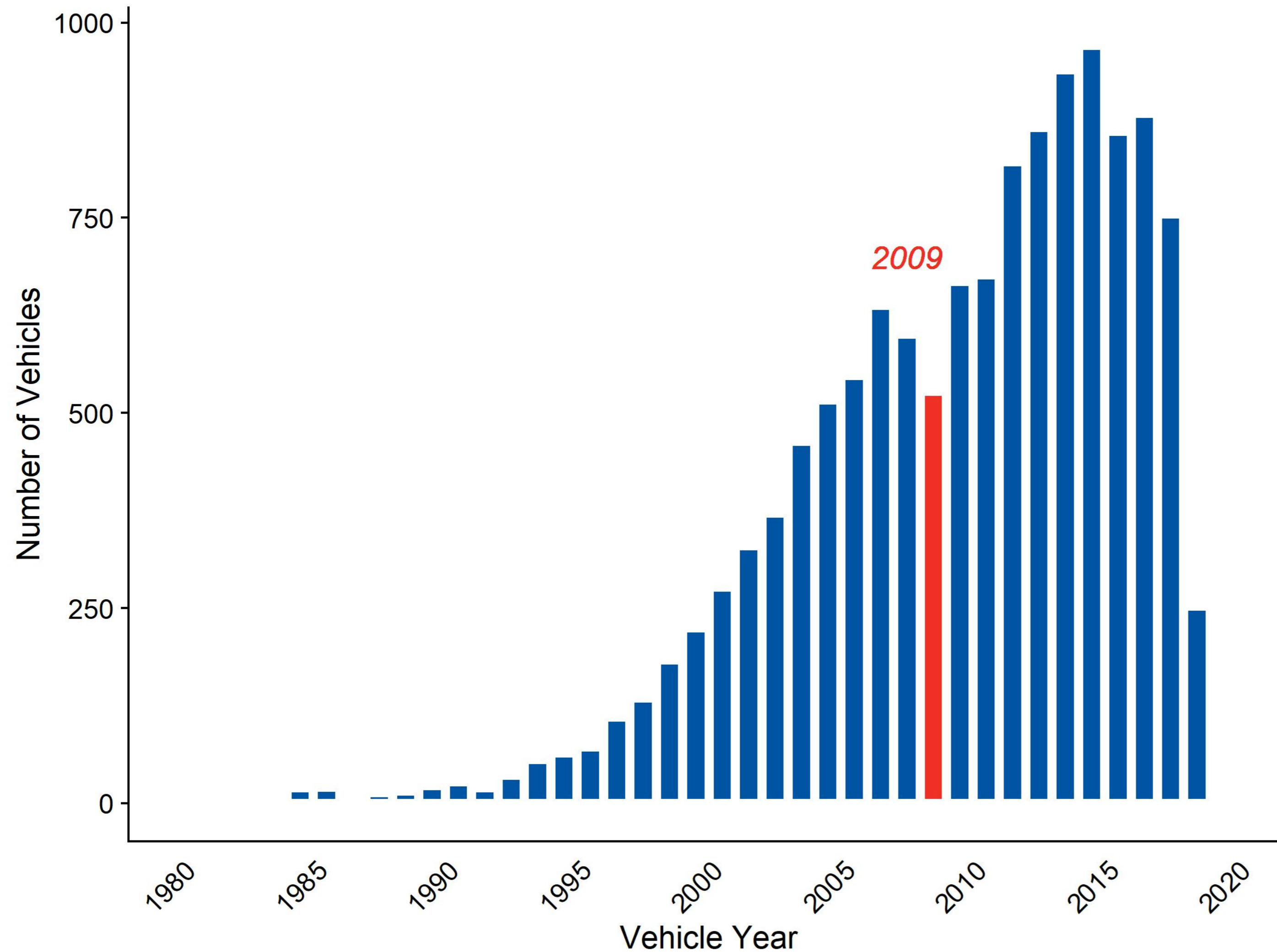


Caring trips: travel performed in service to others or for household maintenance

- Picking up children from school
- Grocery shopping
- Errands
- Family activities

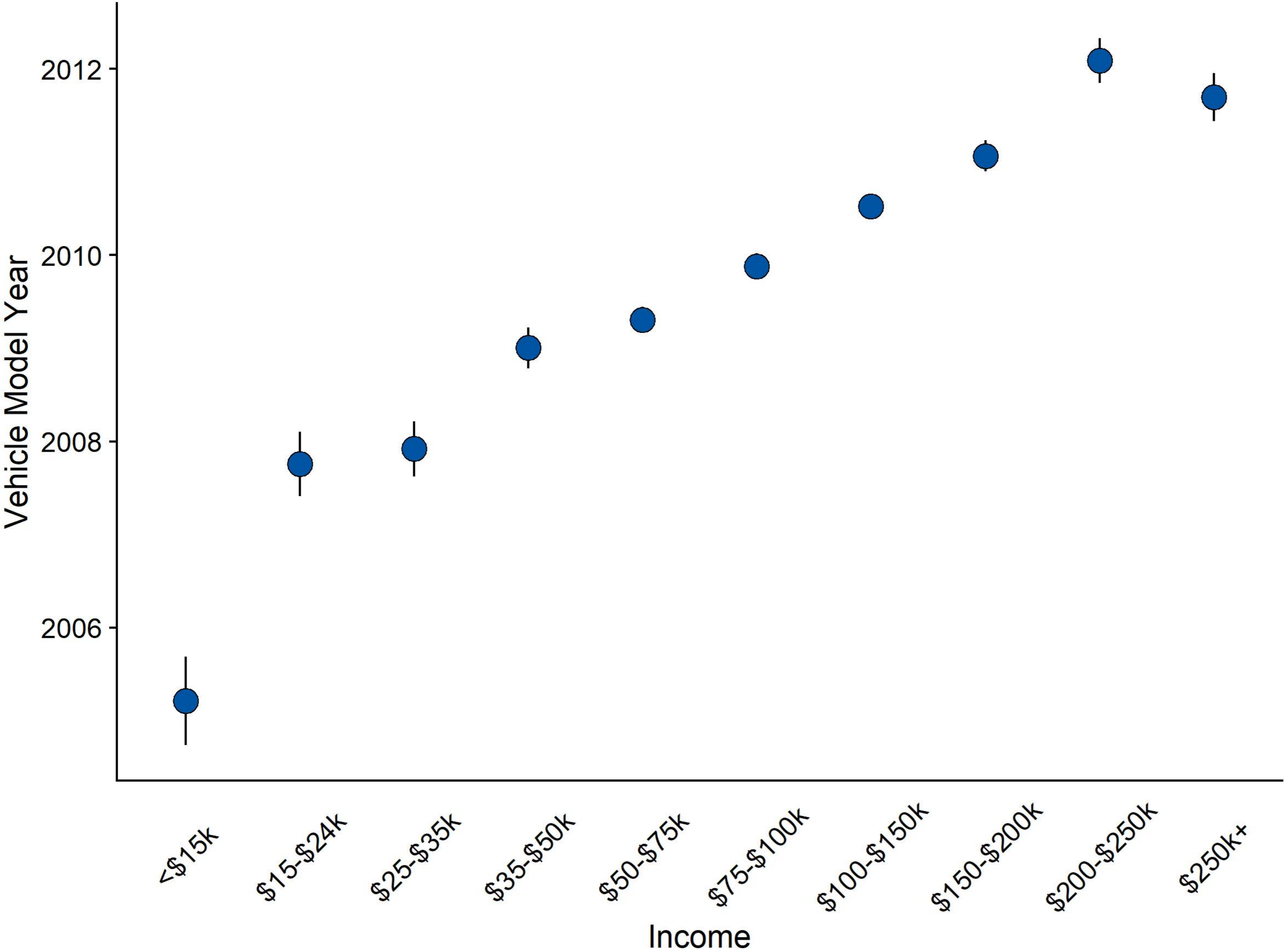
On average, **33%** of women’s trips are caring trips, compared to **28%** of men’s trips.

Vehicles in the Metro



- 13,487 vehicles in the survey (average: 1.8 vehicles per household)
 - 21 Kia Rios
 - 267 Toyota Priuses
 - 77 all-electric vehicles
 - 1 Tesla Model X
 - 1 vintage Chevy Biscayne
- MnPASS
- Cost of parking

Vehicle model year by household income



Household income is strongly correlated with the age of the vehicles in the household.



Planned research topics

- Comparisons to previous years
- Regional disparities by race, income, gender, disability status
- Identifying opportunities for more sustainable mode choices
- Emerging transportation modes
- Vehicle emissions, gas efficiency and age

- COVID-19 Impacts