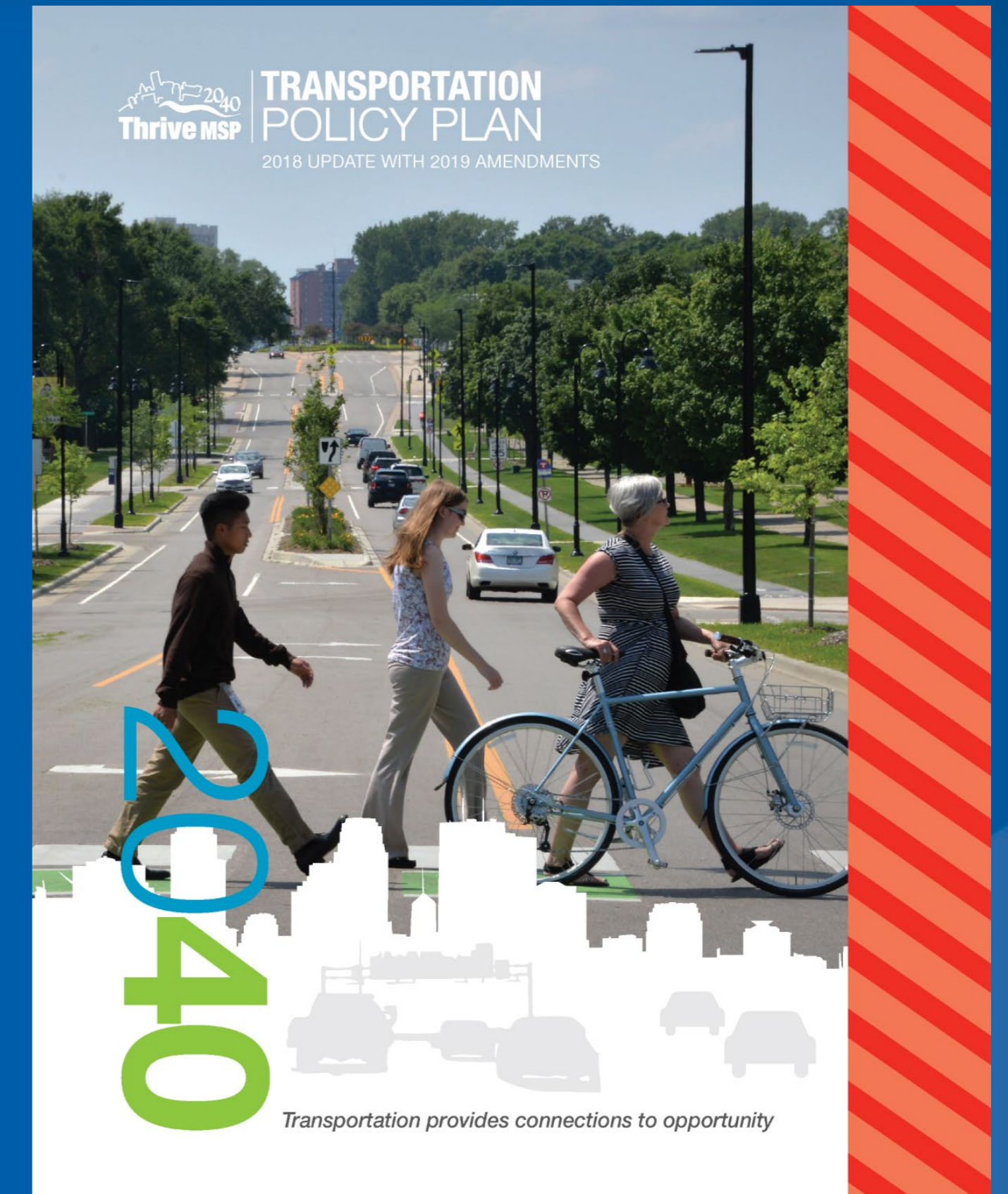


2022 Unified Planning Work Program Planning Studies & Major Work



TAC Planning Committee
05/13/2021



2021-2024 Planning Work

- Major work concluded in 2020...
 - 2040 Transportation Policy Plan Update completed
 - 2020 Regional Solicitation Process completed
 - 2019 TBI Household Travel Survey and Covid-19 survey work completed
- 2021 Kicks off new round of Planning work over next four years
 - 2050 Plan (Thrive MSP 2040 update) work and engagement (CD led)
 - New regional transportation studies to feed into 2050 plan
 - New transportation surveys, modeling and data analysis work
 - 2022 Regional Solicitation changes and preparation
 - Planning work and corridor investment studies led by others

Transportation Policy Plan Identifies 4-Year Planning Program (Chapter 14)

- Covid-19 related studies
- Equity
- Multi-modal investment studies (highways, transit, freight, bicycle, pedestrian, aviation specific studies)
- Connected and Automated Vehicles
- Transportation and Climate Change
- Regional Transportation Surveys, Research and Modeling
- Safety
- Travel Demand Management

2020 Planning Work Continuing in 2021

- Twin Cities Highway Mobility Needs Analysis (near completion)
- Regional Pedestrian Safety Action Plan (to be completed by early 2022)
- RBTN Bikeway Facility Guidelines & Measures Study (to be completed this summer)
- Detailed Congestion Management Process Corridor Analysis Handbook (to be completed early 2022)
- Regional Solicitation Before and After Study II (near completion)
- Mobility Hub Planning Guide (led by Metro Transit, completed by year end)

2021 Studies Getting Underway

- A Path to Accelerate Electric Vehicle Adoption (recently begun)
- Roadway Functional Classification Process Update
- Principal Arterial Intersection Conversion Study Update
- Regional Truck Freight Corridors Data Analysis Tool Update (internal work)
- Travel Demand Management Study (fall 2021 start)
- Equity Evaluation and Strategies for Regional Transportation Investment
 - \$250,000 Council grant
- Aviation System Plan update
 - FAA grant anticipated

Travel Model Work & Research Partnerships

- ActivitySim Model Local Implementation Phase I & AMPO Research Consortium participation
- Network Wrangler Maintenance and Enhancement
- 2050 Plan (Thrive Update) scenario development and modeling (led by Community Development)
- U of M Transitways Impact Research
- U of M Accessibility Observatory
- Peer Regions Research (set-aside for needed peer comparison work)
- Zephyr Foundation Membership
- Transport Foundry - CityCast Platform

Travel Surveys and Data Analysis Work

- Covid-19 related travel research continues (internal analysis)
 - Peak hour travel impacts
- 2021 TBI Household Travel Survey
 - Council/TAB/MnDOT funded
- Transit On-Board Survey
 - Council/TAB/MnDOT funded
- TBI Research Briefs (internally produced)
- Transportation Performance Dashboard creation (internal work)

Regional Planning Process Work

- Significant internal work, typically staff led, non-consultant
- 2022 Regional Solicitation application development
 - Revisions based upon survey and comments from 2020 Solicitation
 - Unique projects category creation
 - RBTN map update
 - Regional bicycle barriers & barrier crossing areas map update
 - Truck Freight Corridors update
 - Scoring measures updated as needed
- 2022 work includes application release, scoring and funding options
- Online TIP mapping
- TAB Transportation Equity work

Proposed 2022 New Studies

- Regional Safety Study
- Urban Freight Distribution Study
- TPP Goals Review, Engagement & Update
 - Prepare for inclusion in 2050 TPP update
 - Reassess Regional Approach to Congestion
- Transportation & Climate Change Measures
- Model Improvement work continued
 - ActivitySim Model Local Initial Implementation Phase II

Questions for Discussion

- Suggestions for refining or refocusing proposed studies?
- What is missing from the planning work program?
- Does your agency have related planning work on-going or proposed:
 - How can/should the Council participate?
 - Are there partnership opportunities?
- Ideas for transportation planning studies beyond 2022?

Thank you

Amy Vennewitz

Deputy Director MTS

amy.vennewitz@metc.state.mn.us

