

Transportation Advisory Board
of the Metropolitan Council of the Twin Cities

ACTION TRANSMITTAL 2021-26

DATE: July 28, 2021
TO: TAC Planning
PREPARED BY: David Burns, Senior Highway Planner, david.burns@metc.state.mn.us
Steve Peterson, Manager of Highway Planning,
steven.peterson@metc.state.mn.us

SUBJECT: Additions to the A-Minor Arterial Network

REQUESTED ACTION: Recommend adoption of the additions to the A-Minor Arterial Network

RECOMMENDED MOTION: That the TAC Planning Committee recommend that the Technical Advisory Committee (TAC) adopt the subclassifications to the A-Minor Arterial Network

BACKGROUND AND PURPOSE OF ACTION: MnDOT, in coordination with the Council, FHWA, and local cities and counties, recently completed a comprehensive update to the functional classification system within the Council's planning area. These changes were recommended as part of Action Transmittal 2021-25. However, because the A-Minor subclassifications are unique to the Council and are not part of the official FHWA functional classification system, the Council is responsible for designating the subclasses of A-Minors. The Council has delegated decision-making authority for Minor Arterial changes to the Technical Advisory Committee (TAC). This action will designate newly added A-Minor Arterials (from Action Transmittal 2021-25) as one of the following four A-Minor subclassifications:

1. A-Minor Relievers: these roadways run parallel to and supplement capacity for congested principal arterials
2. A-Minor Augmentors: roadways that supplement that principal arterial system in densely developed areas
3. A-Minor Expanders: roadways that supplement the principal arterials system in less densely developed areas
4. A-Minor Connectors: these roadways provide safe, direct connections between rural centers and to principal arterials in rural areas

Overall there was a total net reclassification change that resulted in an overall decrease of 16 miles of the A-Minor system, representing a 1% decrease in the number of the A-Minor Arterials. (Note that this is the net change; there were both additions and subtractions from the A-Minor system.) The project team identified several changes to the Other Arterial (B-Minor) system, many of which were reclassified down to Collectors. Table 1 outlines the changes to the Minor Arterial system, including to each of the four A-Minor subclassifications.

Table 1: Proposed Changes to the A-Minor System

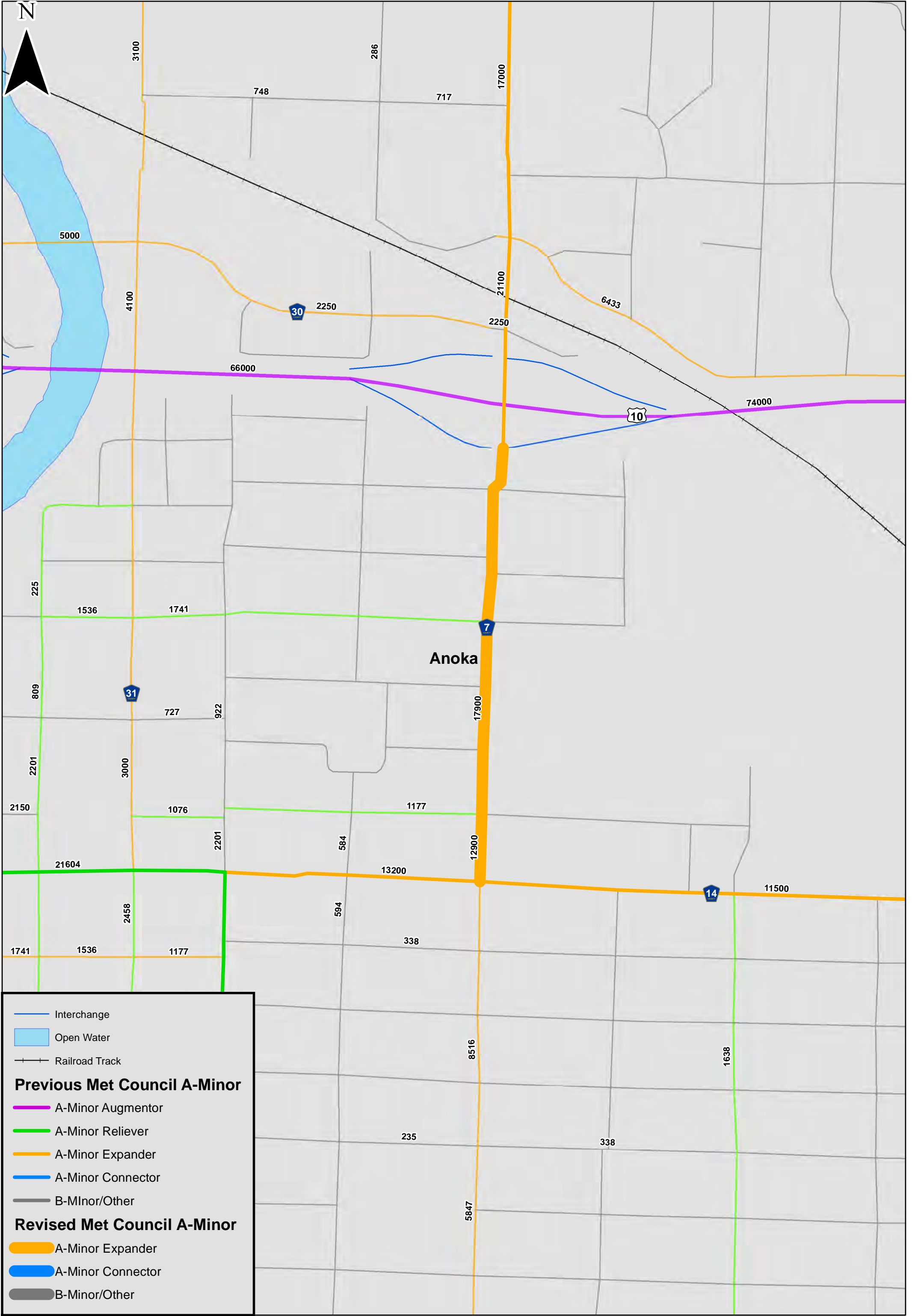
Existing Functional Class			Proposed Functional Class			Change
Minor Arterial	2,437	100%	Minor Arterial	2,293	100%	-6%
A-Minor All (% of Minor Arterial system)	1,946	80%	A-Minor (% of Minor Arterial system)	1,930	84%	1%
Augmentor	195		Augmentor	202		4%
Reliever	431		Reliever	437		1%
Expander	720		Expander	718		-0%
Connector	599		Connector	574		-4%
B-Minor (% of Minor Arterial system)	491	20%	B-Minor (% of Minor Arterial system)	373	16%	-24%

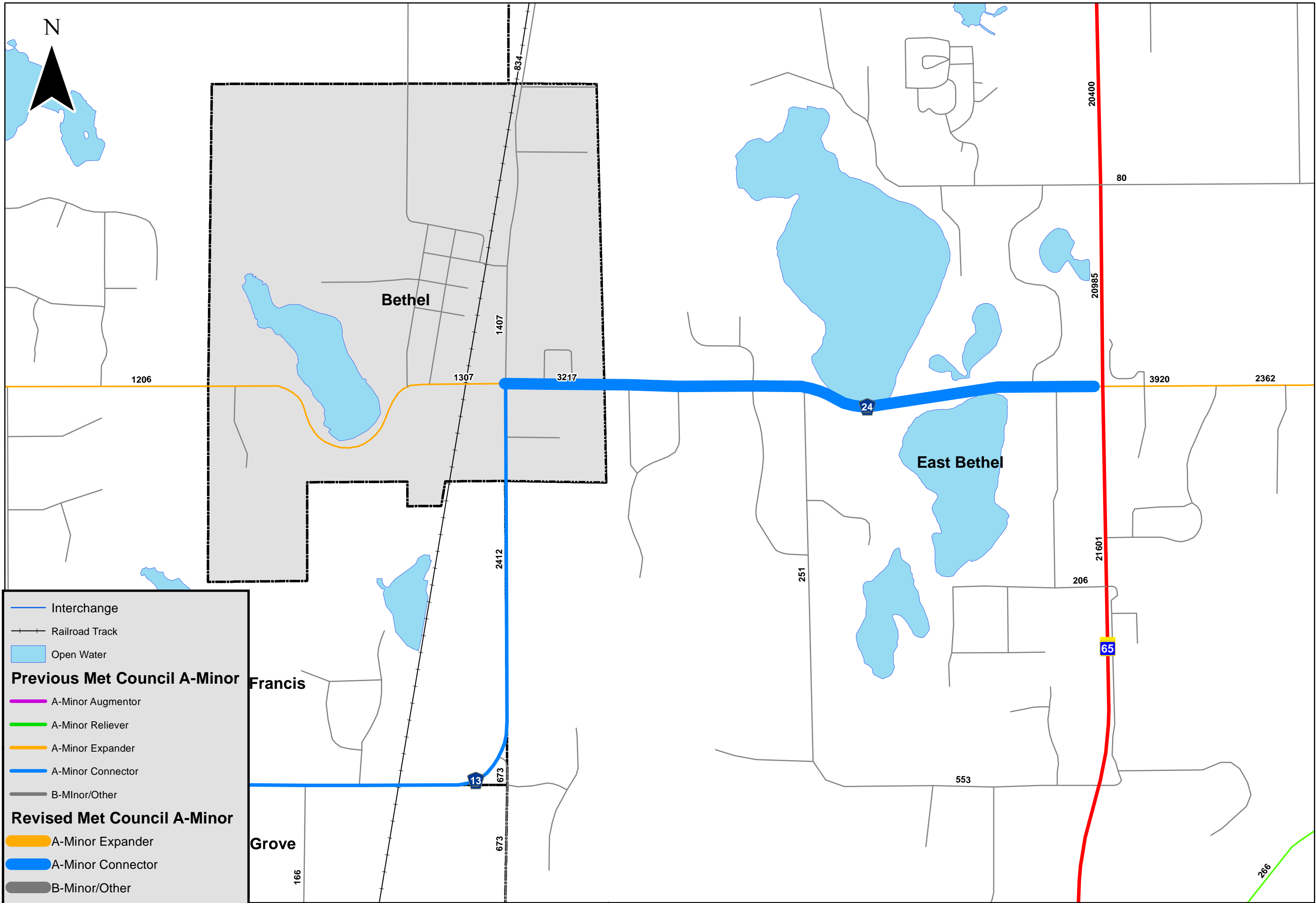
Additionally, maps depicting the changes to the A-Minor network are included in Attachment 1. Council staff worked with MnDOT staff in assigning the subclassifications (Relievers, Augmentors, Expanders, or Connectors), based on land use and roadway classification in the immediate area.

STAFF ANALYSIS: The proposed changes to the A-Minor system more closely reflect the characteristics of the roadways. All changes were identified and agreed upon by technical staff from throughout the region.

ROUTING

TO	ACTION REQUESTED	DATE COMPLETED
TAC Planning Committee	Review & Recommend	
Technical Advisory Committee	Review & Adopt	





N

Bethel

East Bethel

Francis

Grove

— Interchange
— Railroad Track
 Open Water

Previous Met Council A-Minor

- A-Minor Augmentor
- A-Minor Reliever
- A-Minor Expander
- A-Minor Connector
- B-Minor/Other

Revised Met Council A-Minor

- A-Minor Expander
- A-Minor Connector
- B-Minor/Other

1206

1307

1407

3217

2412

673

673

166

24

251

206

553

65

20400

80

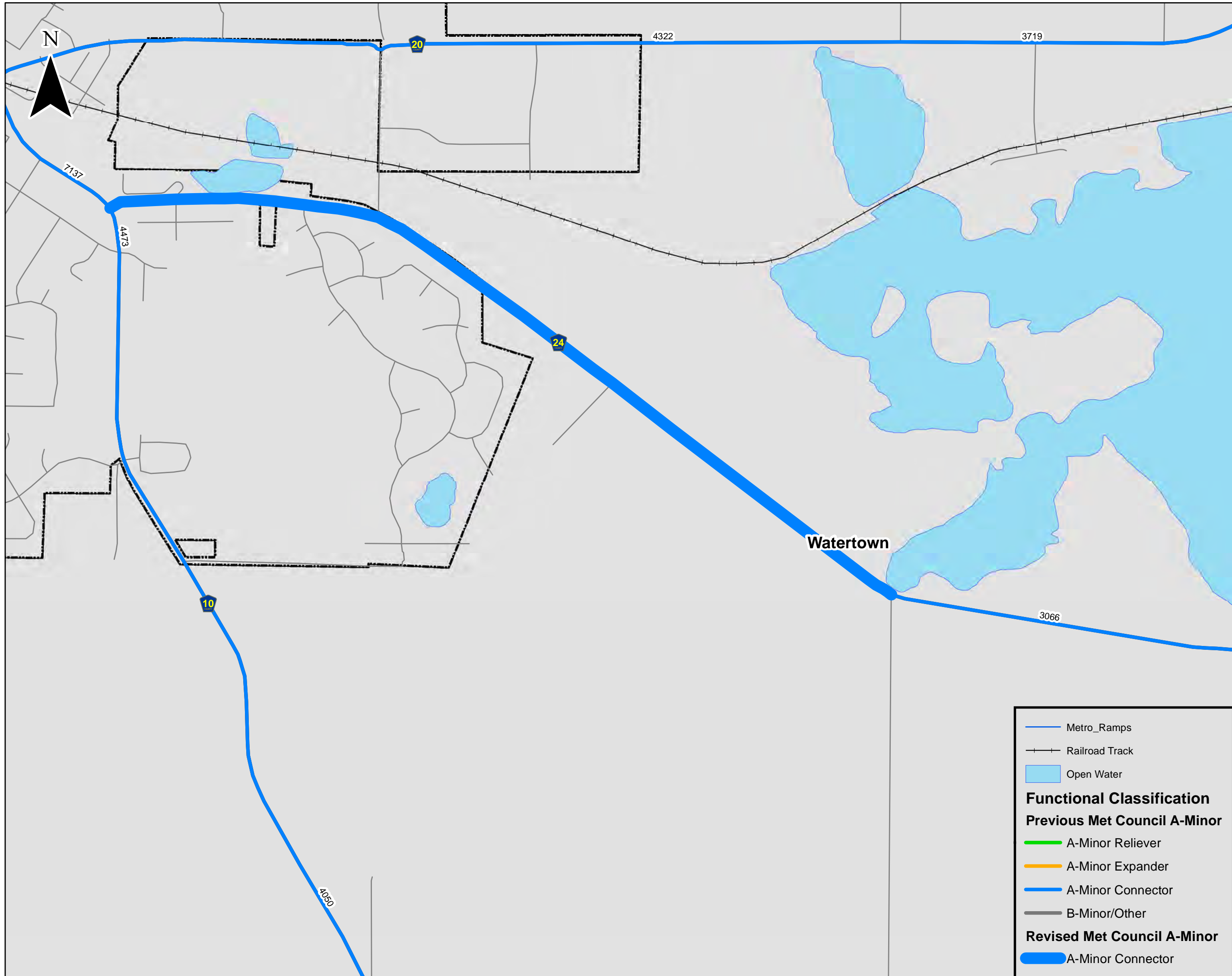
20985

3920

21601

266

2362



- Metro_Ramps
- Railroad Track
- Open Water

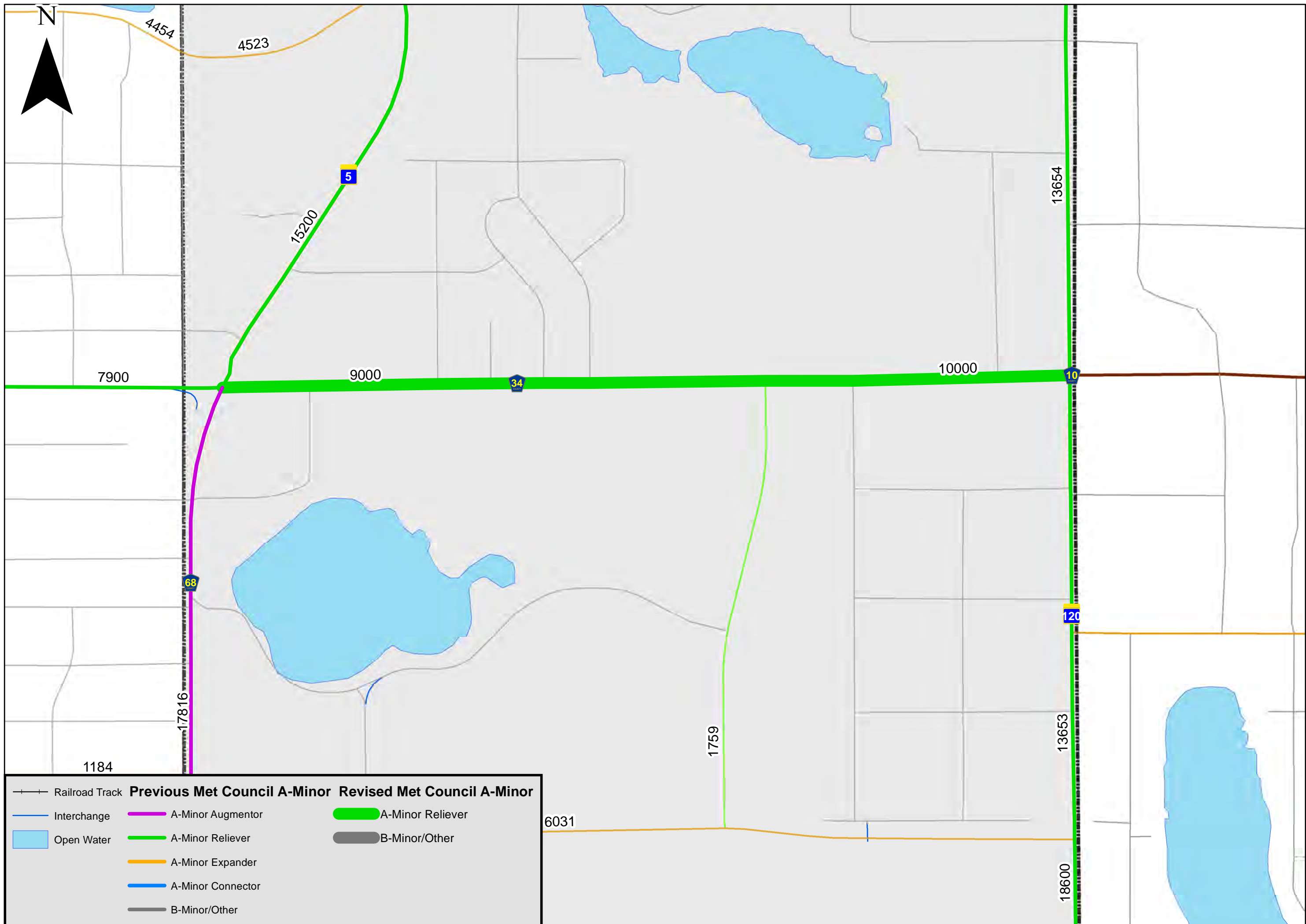
Functional Classification

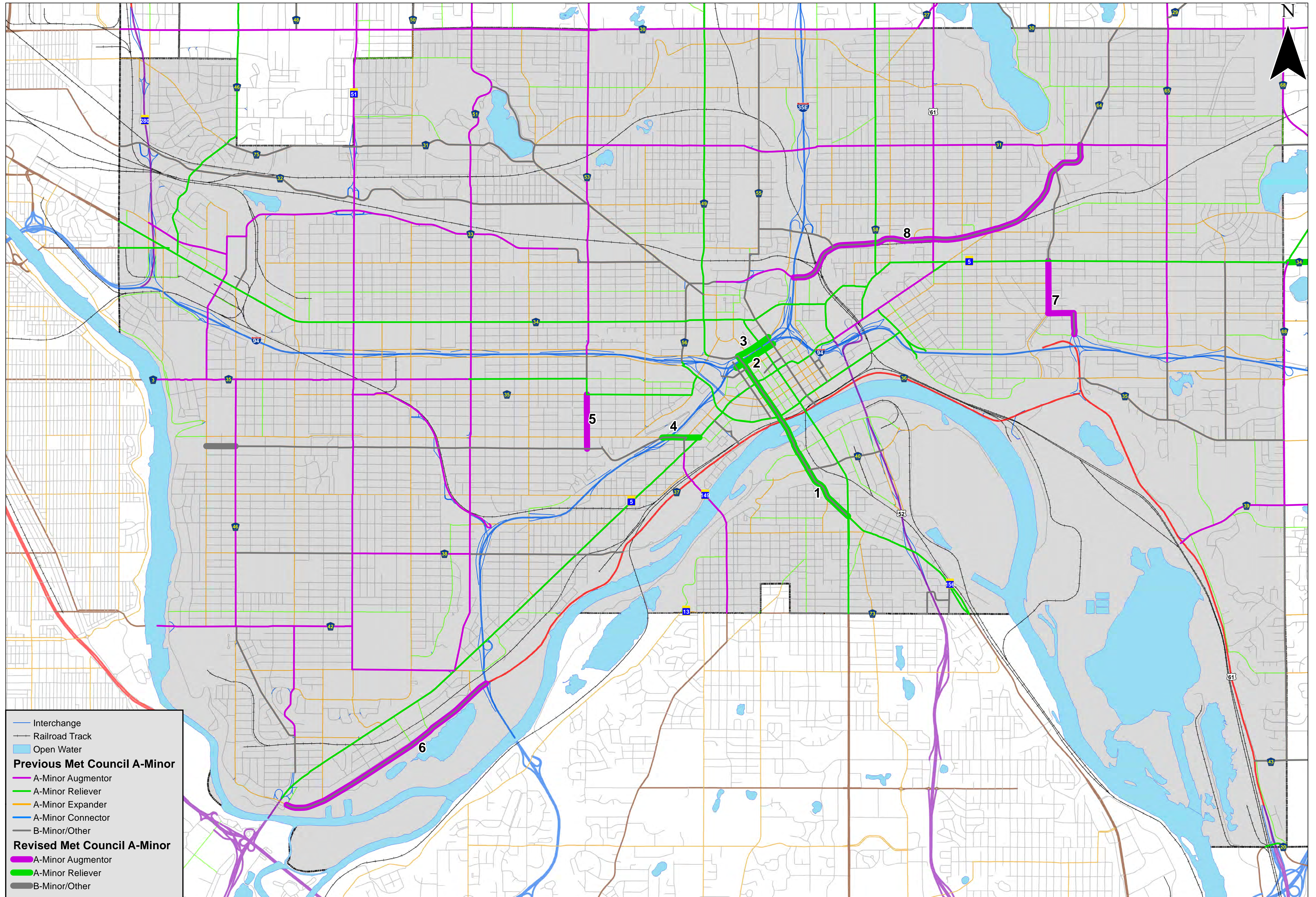
Previous Met Council A-Minor

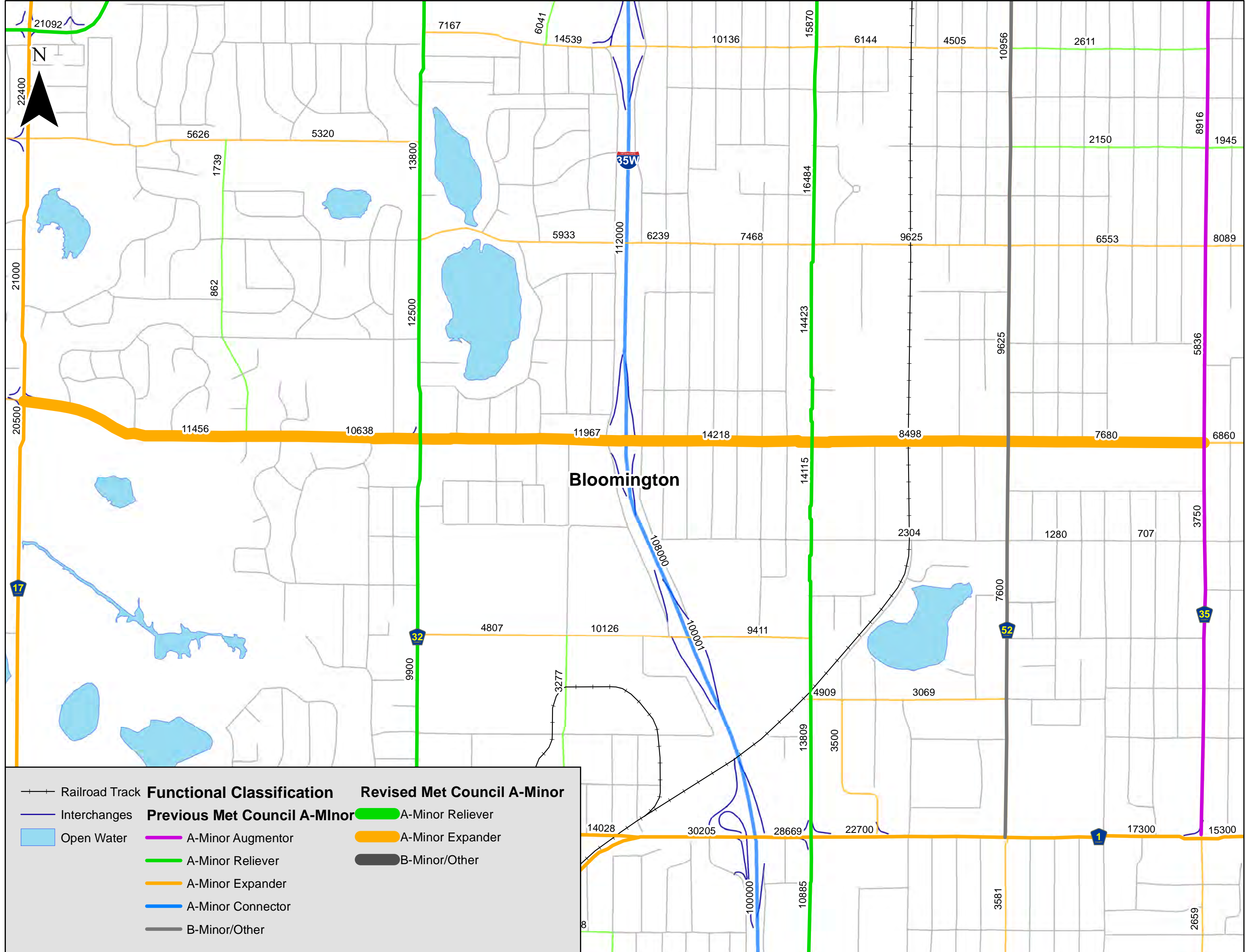
- A-Minor Reliever
- A-Minor Expander
- A-Minor Connector
- B-Minor/Other

Revised Met Council A-Minor

- A-Minor Connector



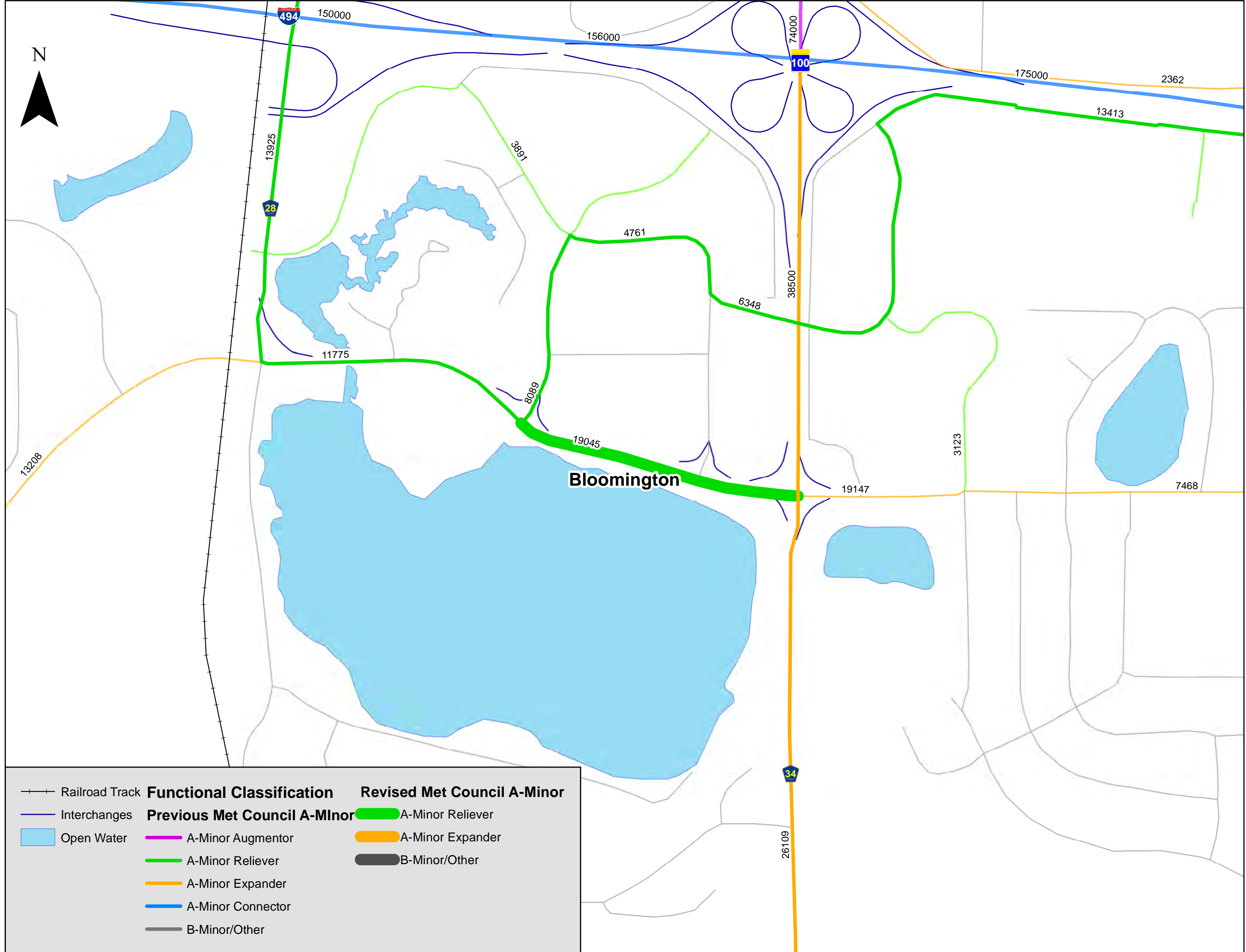




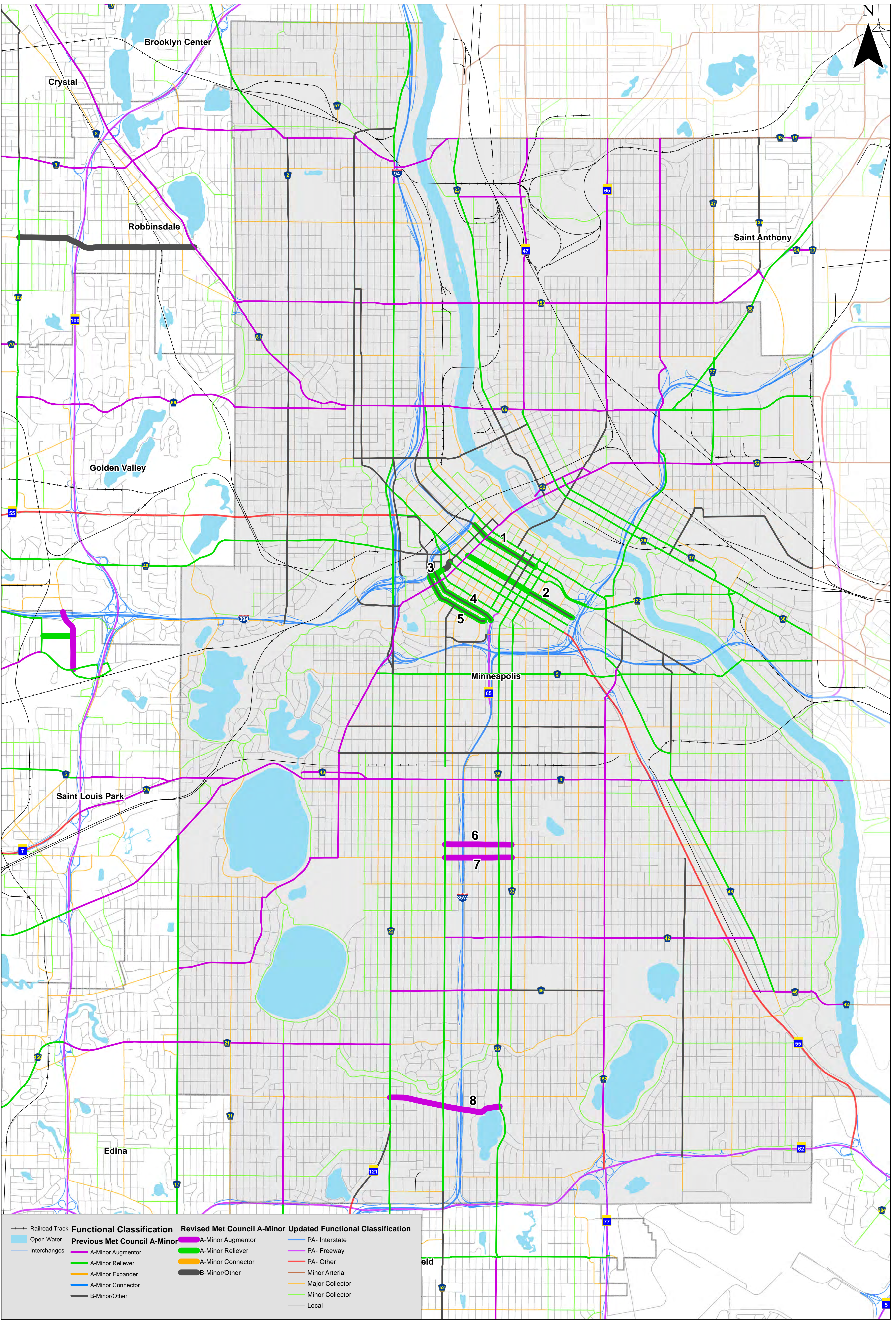
Bloomington

Map grid labels (road numbers):

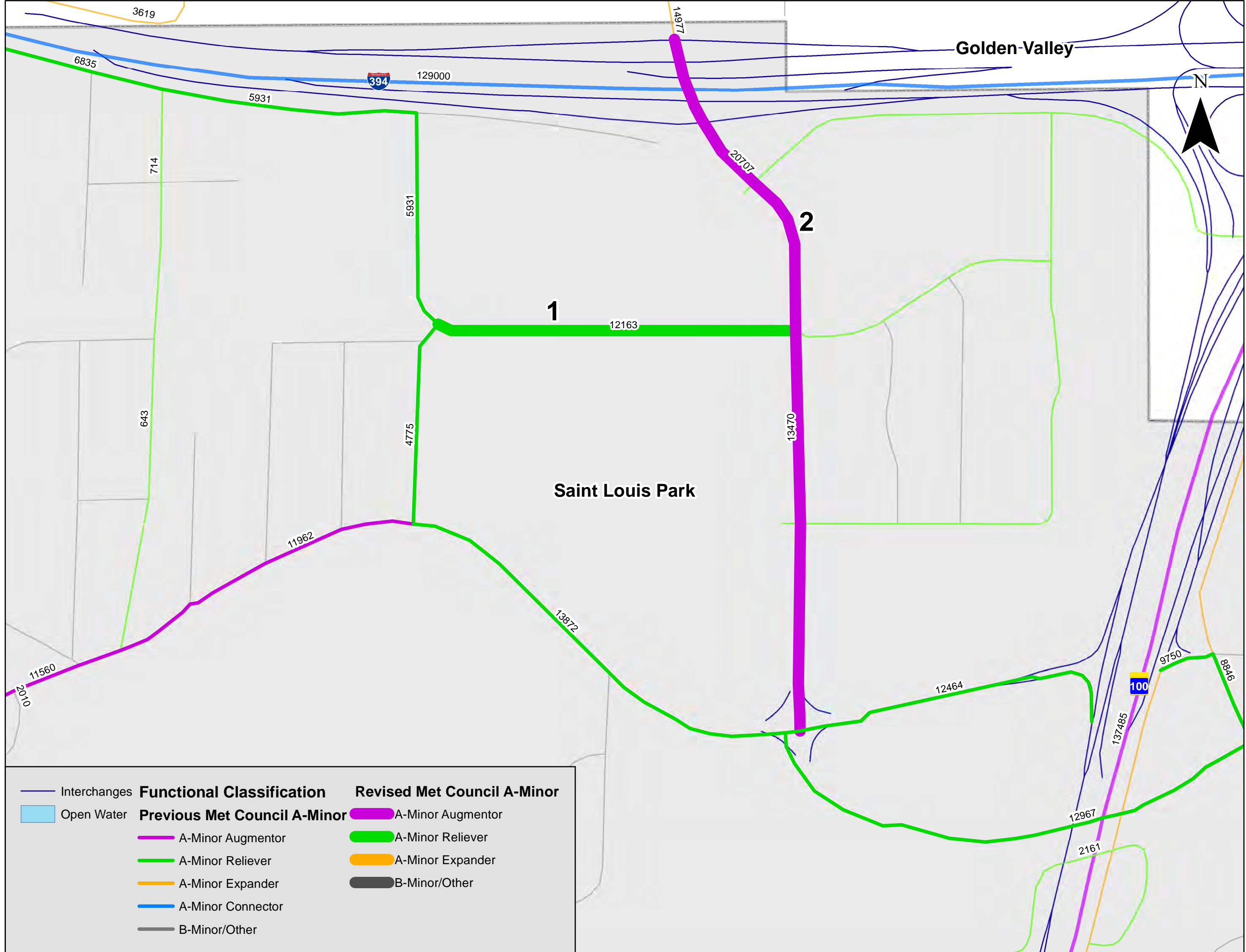
Vertical labels: 21092, 22400, 21000, 20500, 17, 32, 9900, 3277, 10885, 10885, 3581, 2659, 7167, 6041, 14539, 10136, 15870, 6144, 4505, 10956, 2611, 8916, 1945, 5626, 5320, 13800, 1739, 862, 12500, 5933, 112000, 6239, 7468, 9625, 2150, 8089, 20500, 11456, 10638, 11967, 14218, 8498, 7680, 6860, 14115, 14423, 16484, 9625, 5836, 11415, 2304, 1280, 707, 3750, 10800, 10001, 9411, 7600, 52, 35, 4807, 10126, 4909, 3069, 3500, 13809, 3277, 14028, 30205, 28669, 22700, 1, 17300, 15300, 10000, 10000, 10885, 3581, 2659, 8, 8.

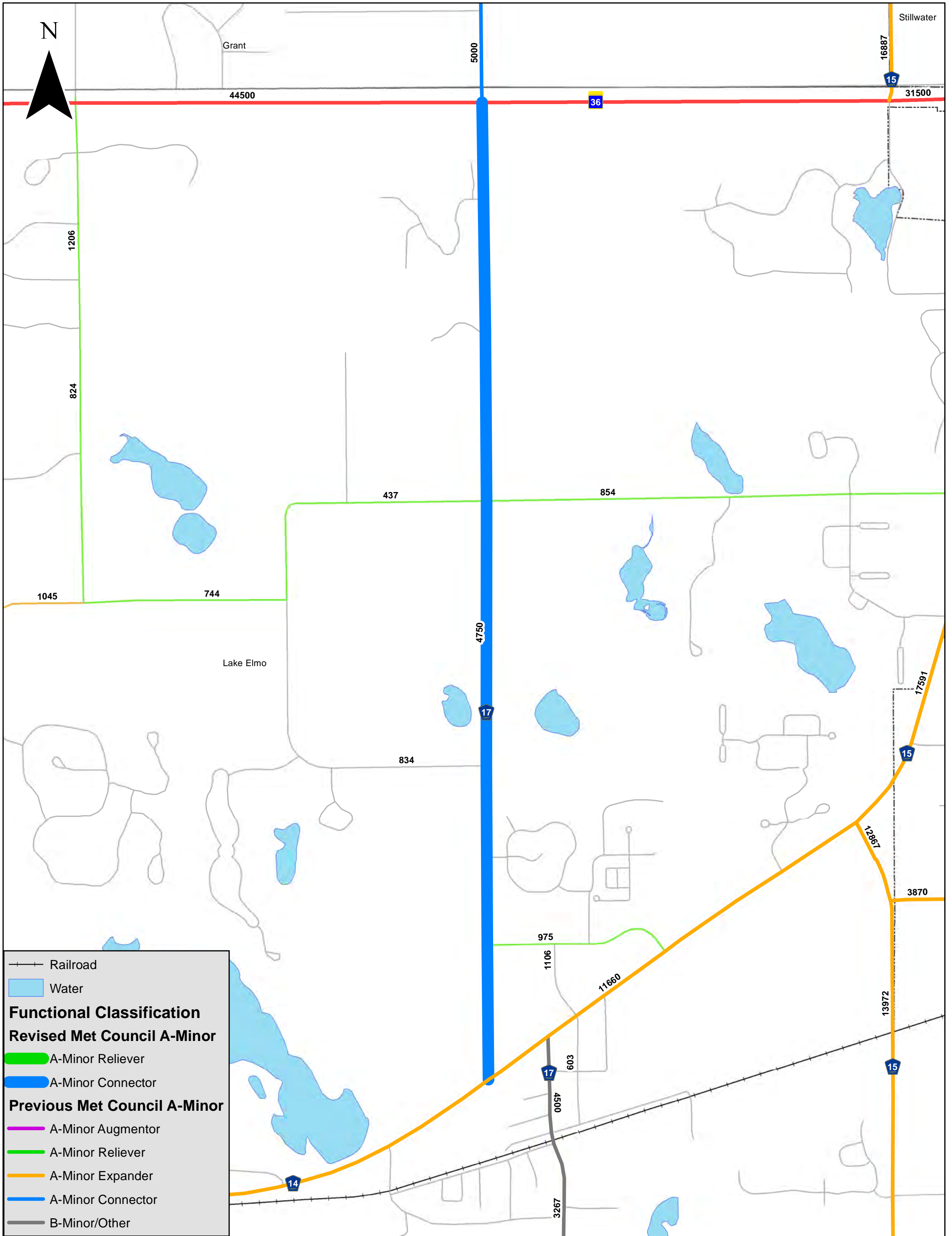


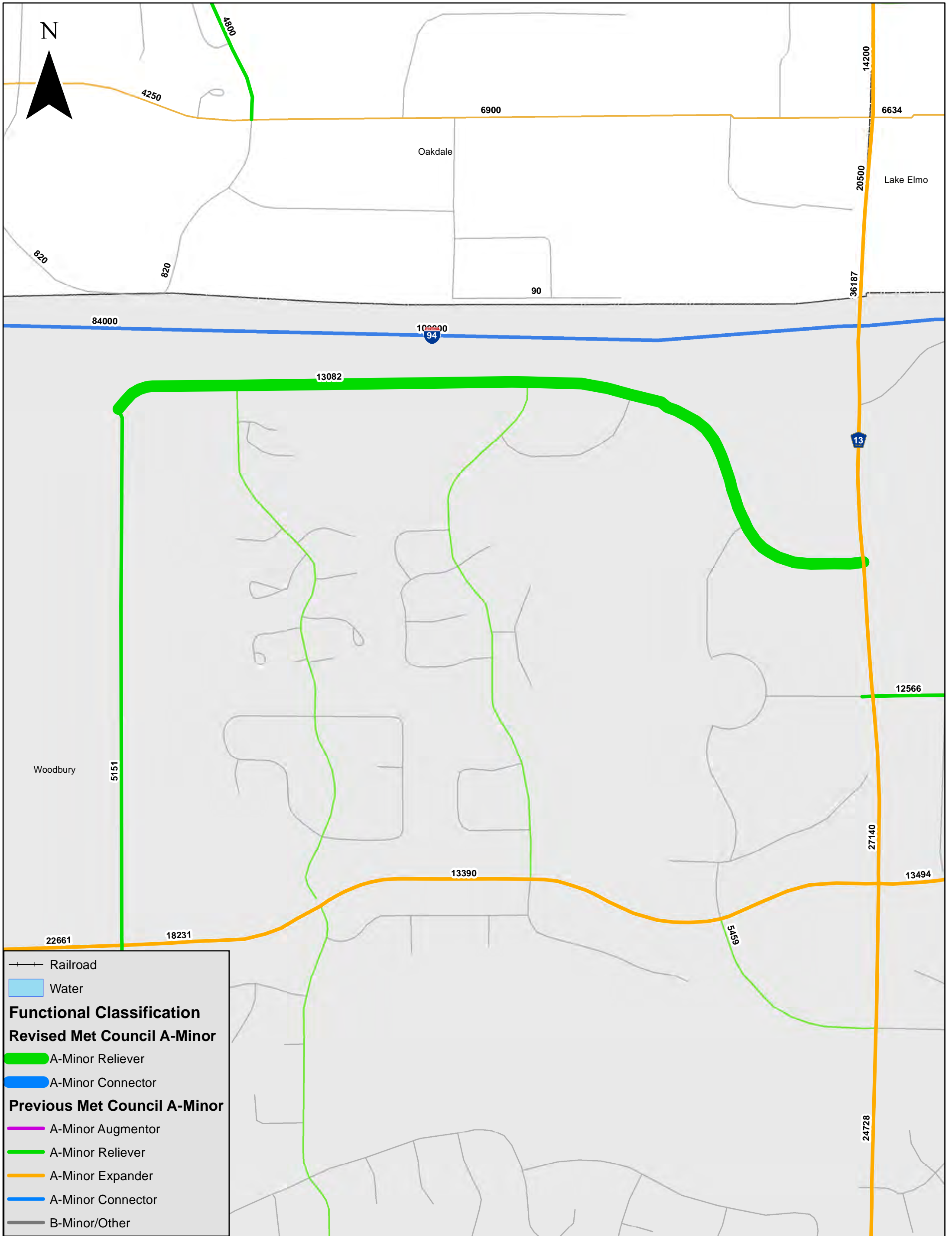
—+— Railroad Track	Functional Classification	Revised Met Council A-Minor
— Interchanges	Previous Met Council A-Minor	A-Minor Reliever
Open Water	A-Minor Augmentor	A-Minor Expander
	A-Minor Reliever	B-Minor/Other
	A-Minor Expander	
	A-Minor Connector	
	B-Minor/Other	

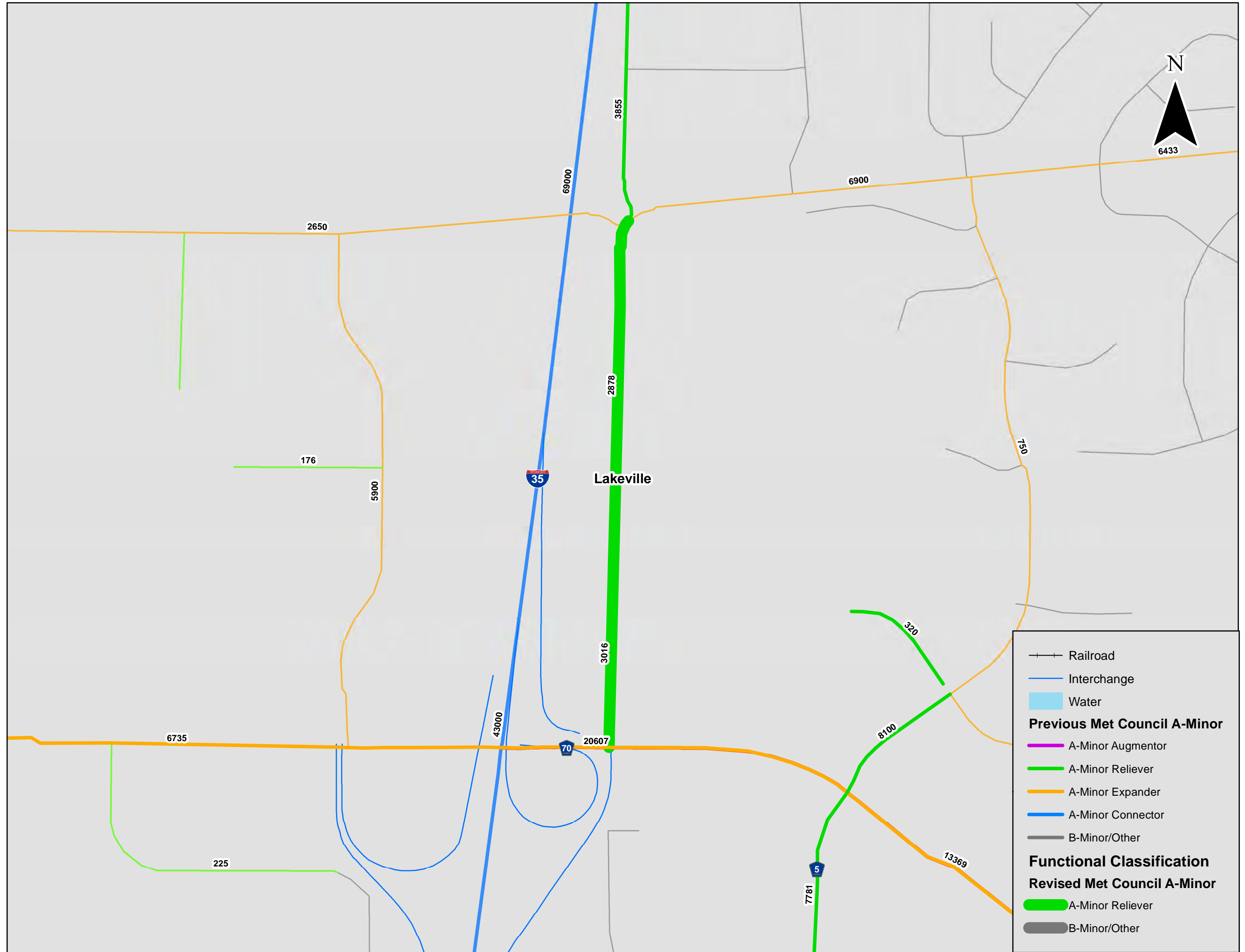


Functional Classification		Revised Met Council A-Minor Updated Functional Classification	
Previous Met Council A-Minor		A-Minor	
Railroad Track	A-Minor Augmentor	PA- Interstate	A-Minor Augmentor
Open Water	A-Minor Reliever	PA- Freeway	A-Minor Reliever
Interchanges	A-Minor Expander	PA- Other	B-Minor/Other
	A-Minor Connector	Minor Arterial	
	B-Minor/Other	Major Collector	
		Local	

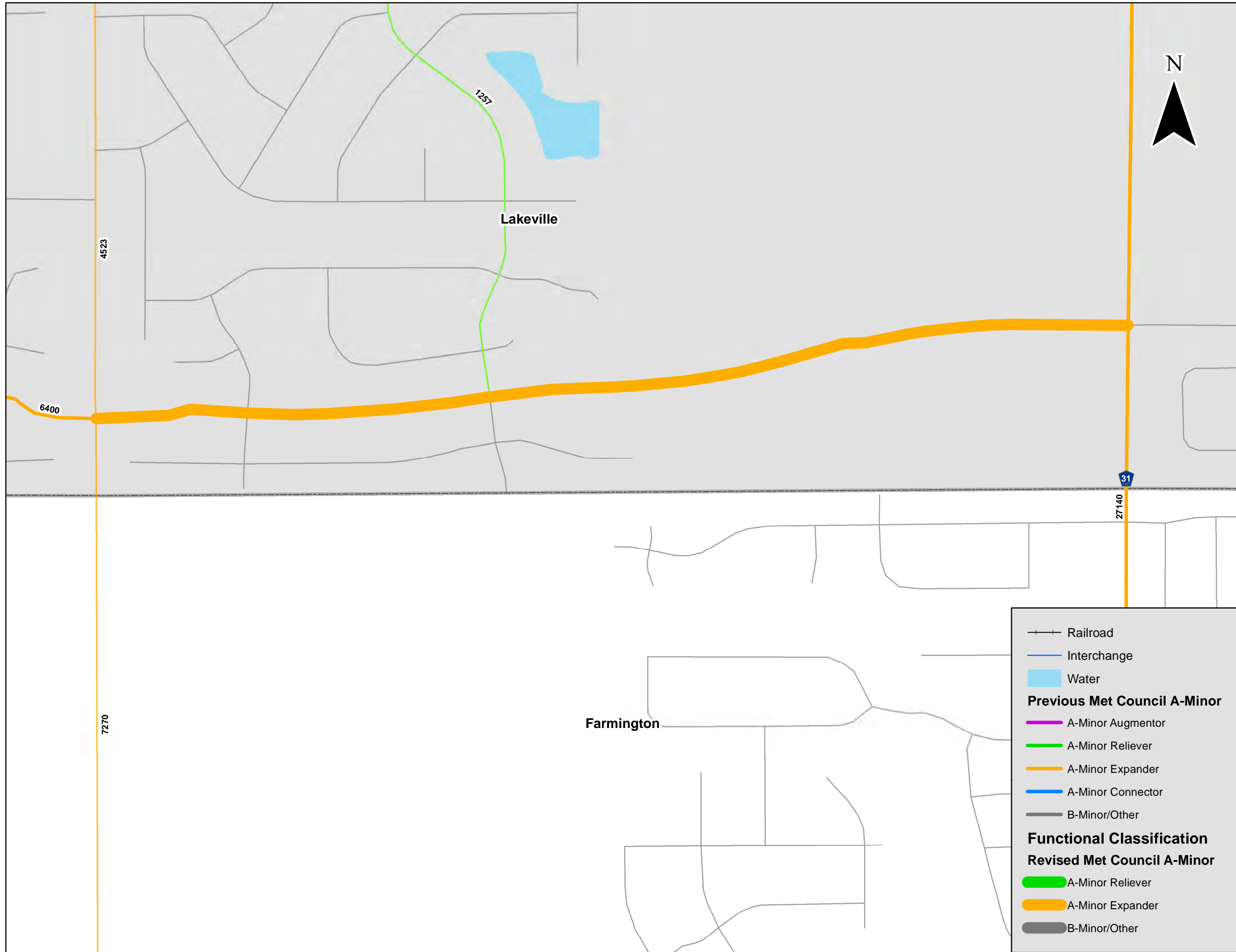








	Railroad
	Interchange
	Water
Previous Met Council A-Minor	
	A-Minor Augmentor
	A-Minor Reliever
	A-Minor Expander
	A-Minor Connector
	B-Minor/Other
Functional Classification	
Revised Met Council A-Minor	
	A-Minor Reliever
	B-Minor/Other



Lakeville

Farmington

	Railroad
	Interchange
	Water
Previous Met Council A-Minor	
	A-Minor Augmentor
	A-Minor Reliever
	A-Minor Expander
	A-Minor Connector
	B-Minor/Other
Functional Classification	
Revised Met Council A-Minor	
	A-Minor Reliever
	A-Minor Expander
	B-Minor/Other

4523

6400

1257

31

27140

7270