

2013 Second Quarter Regional Ridership Report

Transportation Committee
August 12, 2013

Region's first Bus Rapid Transit (BRT) METRO Red Line

- Started June 22.
- Operates along Cedar Avenue and Hwy 77 between Apple Valley Station and Mall of America.
- No fare was charged June 22-30.
- Average ridership:
 - ❖ Weekday – 823
 - ❖ Saturday - 512
 - ❖ Sunday - 413
- Average weekday ridership is forecast to reach 975 after the first full year of service, growing to 1,600 in 2017.

2nd Quarter 2013 to 2012 Comparison by Provider

<u>Provider</u>	<u>Rides</u>	<u>% Change</u>
Metro Transit	20.3 M*	2.8%
MTS - Contracted	1.36 M	3.3%
Suburban Providers	1.28 M	2.2%
University of MN	611,000	-3.5%
	-----	-----
Total	23.5 M	2.7%

* Excludes 201,744 Maple Grove contracted rides

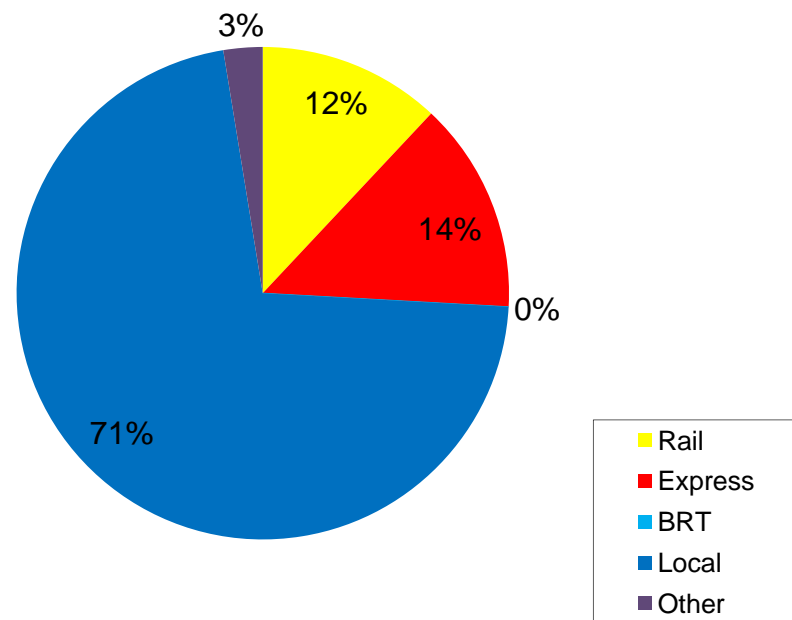
2nd Quarter 2013 to 2012 Average Weekday Ridership by Provider

<u>Provider</u>	<u>Average Weekday Rides</u>	<u>% Change</u>
Metro Transit	262,612*	2.9%
MTS - Contracted	19,240	2.2%
Suburban Providers	19,597	2.3%
University of MN	9,541	-2.7%
	-----	-----
Total	310,991	2.6%

* Excludes Maple Grove contracted rides

2nd Quarter 2013 by Service Type

- ❖ Rail – 2.8 M
- ❖ Express Bus – 3.3 M
- ❖ BRT – 7,839
- ❖ Local Bus – 16.8 M
- ❖ Other* – .60 M
- ❖ Total – 23.5 M

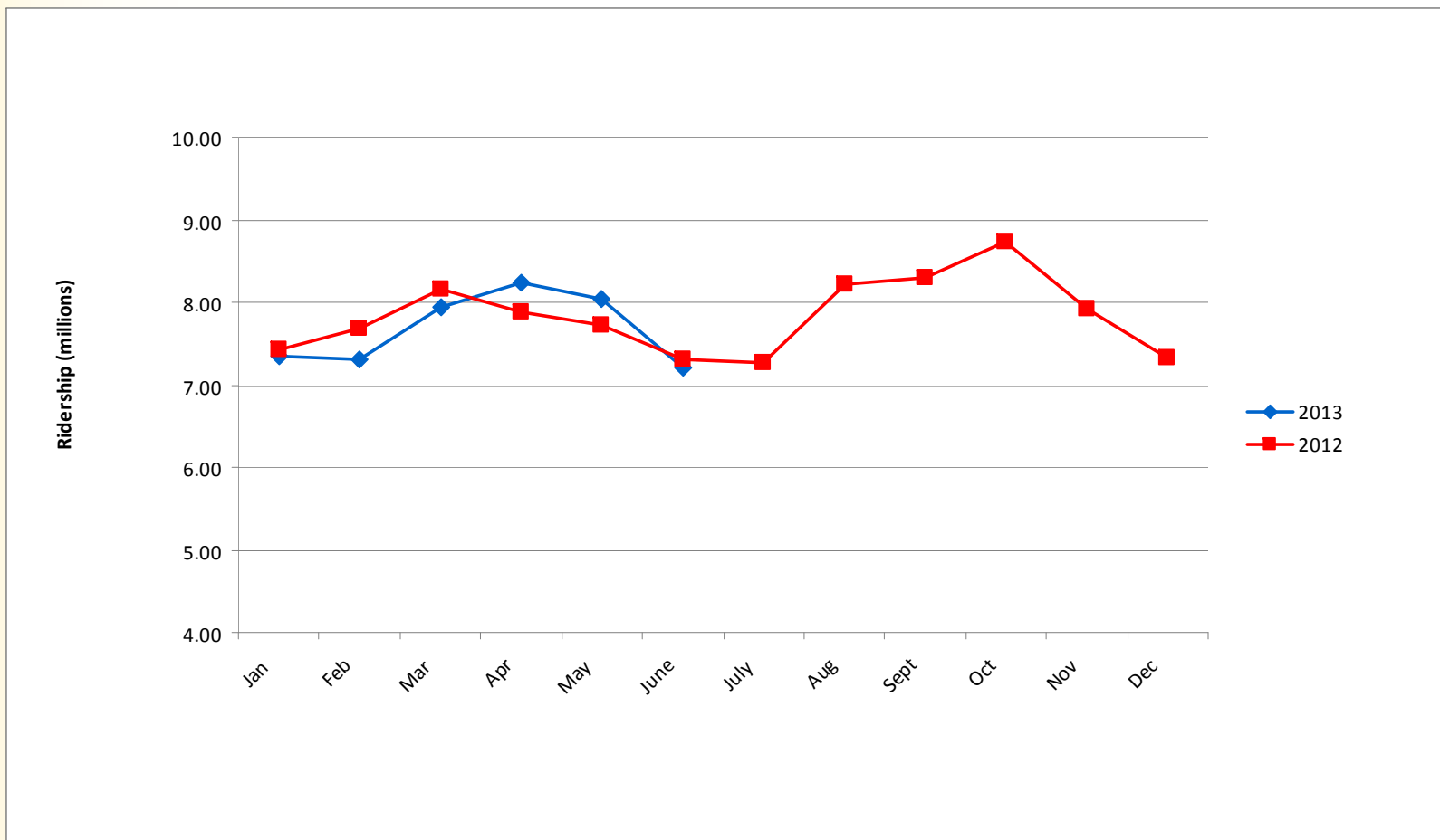


* Dial-a-Ride, Metro Mobility, Vanpool

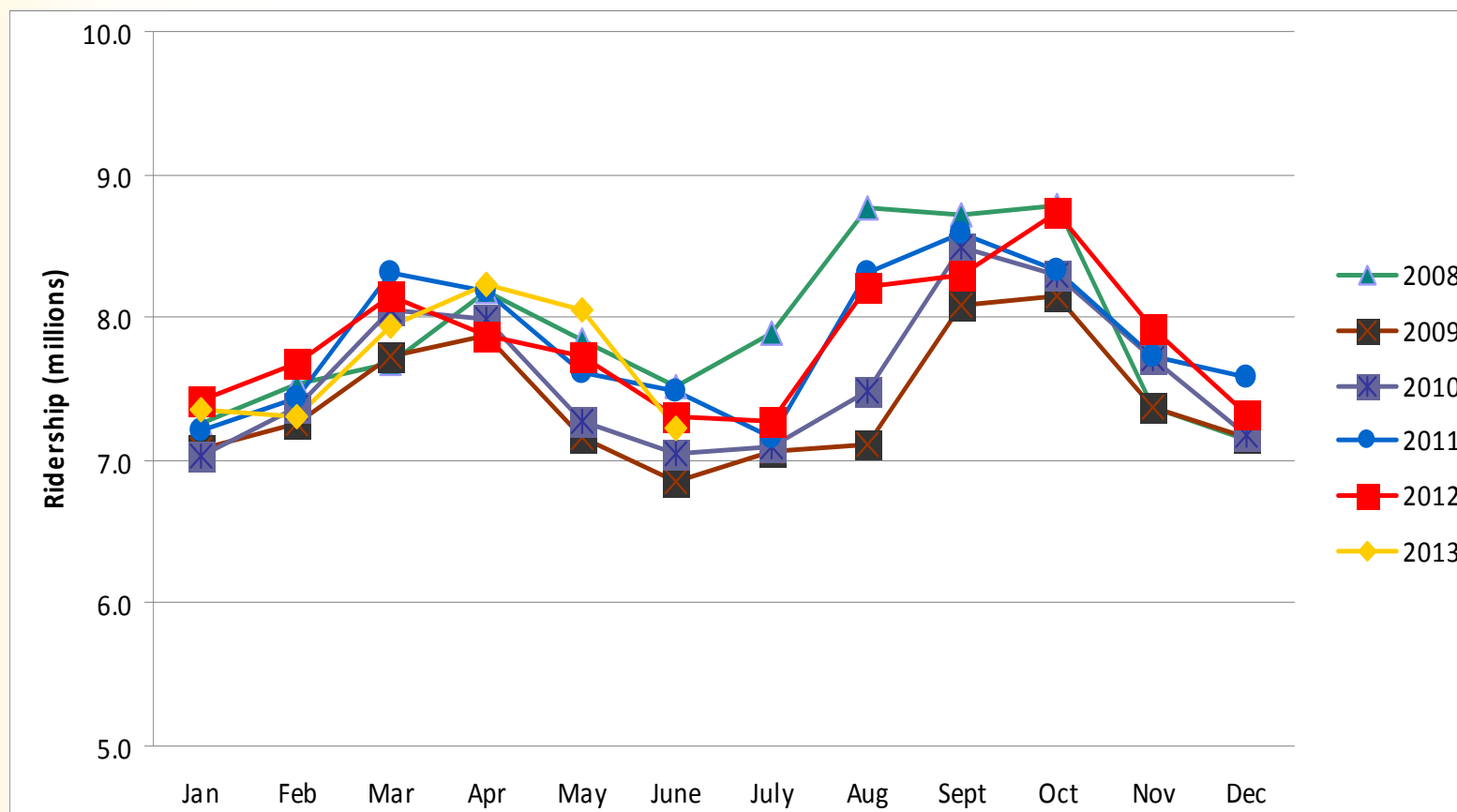
2nd Quarter 2013 to 2012 Comparison by Service Type

<u>Type of Service</u>	<u>% Change</u>
Rail	-2.9%
Express Bus	3.9%
BRT	N/A
Local Bus	3.3%
Dial-a-Ride	3.3%
Vanpool	8.0%
Metro Mobility	<u>4.6%</u>
Total	2.7%

2013 - 2012 Monthly Comparison



2013-2008 Monthly Comparison



2013 Second Quarter Regional Ridership Report

Questions