

Ongoing and Long Range Planning Activities

## Regional Bicycle Planning

Transportation Committee

February 11, 2013



## Introduction

- Council Bicycle Planning and Promotion Efforts
- Transportation Policy Plan Update
- Regional Bicycle System Master Study

Feb. 11, 2013



## Why Now?

- Growing bicycle use in Twin Cities
- Growing interest in bikeway planning
- Complete Streets awareness
- More bike facilities require more coordination



Feb. 11, 2013



## Ongoing Council Planning & Promotion Efforts

- Metro Transit – Service Planning, Marketing, Facilities
- Parks Department – regional trails
- MTS – long range planning, computer apps



Feb. 11, 2013



## Metro Transit Activities

- Service Planning
  - Bicycle/transit connections studies
  - Coordinating w/cities re local bike connections
  - Encouraging bike/transit usage
- Marketing
  - Bike locker rentals coordination
  - Promoting bicycle commuting (with TMOs)
  - Exploring feasibility of 3-space bike racks
- Facilities
  - GIS planning/tracking of bike facilities

Feb. 11, 2013



## Regional Parks Department Activities

- Designates regional trail corridors
- Develops Regional Parks Policy Plan
- Coordinates trails master planning with regional park implementing agencies



Feb. 11, 2013



## MTS Bicycle Planning Activities

- TPP policy planning
- Regional bicycle system inventory
- Bicycle trip tracking

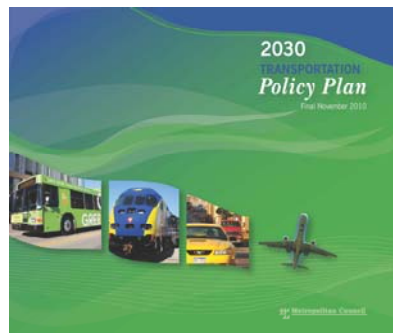


Feb. 11, 2013



## TPP – What's in the 2030 plan?

- Issues and trends
- 2007 Regional Bicycle Facilities Map
- Comprehensive Plan requirements
- Bikeway connections to transit system
- Complete Streets policies



Feb. 11, 2013



## 2040 TPP – Items to Update

- Regional and local jurisdictional roles
- Regional Bikeway Corridors policies
- Updated Regional Bicycle System Map
- Investment prioritization policies
- Performance measures and monitoring guidelines (New)
- System preservation & maintenance (New)

Feb. 11, 2013



## Using Cycle Tracks for voluntary bike trip tracking

- Smartphone app uses iPhone/Android GPS support to track bike trips.
- Collects/compiles data on trip purpose, route, date, time of day, duration.
- Measures to assess/compare route bikeability.

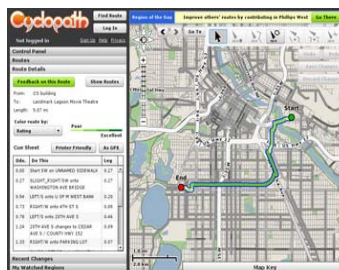


Feb. 11, 2013



## Use of CycloPath & CycloPlan in Regional Bicycle Planning

- CycloPath: web-based route finding tool
- CycloPlan: set up to house the “official” regional bicycle inventory/system plan
- Regional application: coordination/integration with city and county bike plans

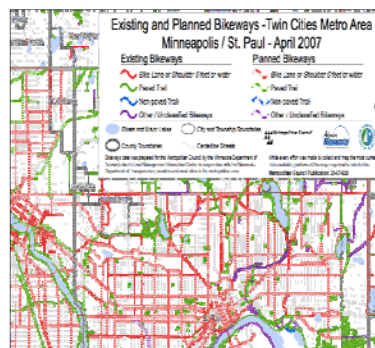


Feb. 11, 2013



## Regional Bicycle System Master Study

- Goal: to develop better understanding of regional bicycle network & how to improve it
- Regular study PMT and PSC meetings
- Four sub-regional focus groups
- Four public workshops



Feb. 11, 2013



# Regional Bicycle System Master Study

## Study analysis tasks

- Define role/criteria for regional bicycle corridors
- Evaluate connectivity of existing network
- Determine key regional destinations
- Identify gaps and barriers in existing/planned system
- Identify “missing corridors”

Feb. 11, 2013



# Regional Bicycle Master Study

## Major study products

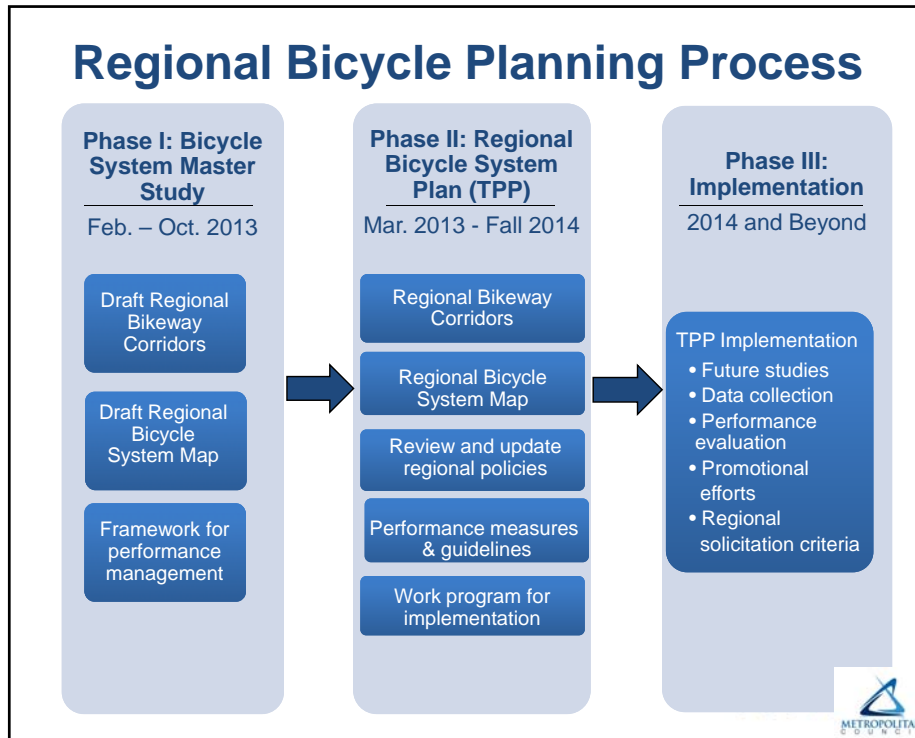
- Proposed Regional Bikeway Corridors
- Proposed Regional Bicycle System map
- Framework of performance measures



Feb. 11, 2013







## Regional Bicycle Planning Next Steps

- Kick-off Bicycle System Master Study
- Staff review of TPP policies and strategies
- Public workshops/focus groups

 METROPOLITAN COUNCIL

Feb. 11, 2013



Ongoing and Long Range Planning Activities

# Regional Bicycle Planning

Transportation Committee  
February 11, 2013

