

2012 Fourth Quarter and 2012 Year End Regional Ridership Report

Transportation Committee
February 11, 2013



Fourth Quarter 2012 to 2011 Ridership by Provider

| <u>Provider</u> | <u>Rides</u> | <u>% Change</u> |
|--------------------|---------------|-----------------|
| Metro Transit | 20.3 M* | 1.2% |
| MTS - Contracted | 1.37 M | 8.8% |
| Suburban Providers | 1.24 M | -0.6% |
| University of MN | 1.08M | 1.3% |
| Ramsey Star | 5,845 | -55.5% |
| | ----- | ----- |
| Total | 24.0 M | 1.5% |

* Excludes 196,483 Maple Grove contracted rides



Fourth Quarter 2012 to 2011 Average Weekday Ridership by Provider

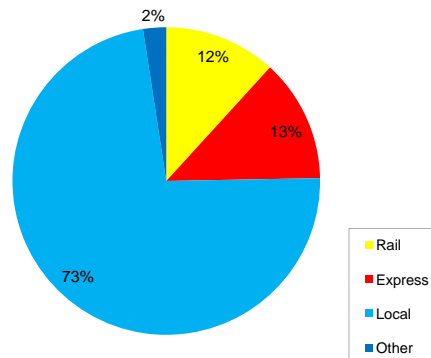
| <u>Provider</u> | <u>Average Weekday Rides</u> | <u>% Change</u> |
|--------------------|------------------------------|-----------------|
| Metro Transit | 271,400* | 2.9% |
| MTS - Contracted | 20,185 | 11.4% |
| Suburban Providers | 19,602 | 1.4% |
| University of MN | 17,248 | 2.7% |
| Ramsey Star | 183 | -12.1% |
| | ----- | ----- |
| Total | 328,530 | 3.2% |

* Excludes Maple Grove contracted rides



Fourth Quarter 2012 Ridership by Service Type

- ❖ Rail – 2.8 M
- ❖ Express Bus – 3.1 M
- ❖ Local Bus – 17.5 M
- ❖ Other* – .58 M
- ❖ Total – 24.0 M



* Dial-a-Ride, ADA Complementary, Vanpool



Fourth Quarter 2012 to 2011 Comparison by Service Type

| <u>Type of Service</u> | <u>% Change</u> |
|------------------------|-----------------|
| Rail | 1.6% |
| Express Bus | -0.7% |
| Local Bus | 1.8% |
| Dial-a-Ride | -7.6% |
| Vanpool | 2.0% |
| ADA Complementary | <u>7.8%</u> |
| Total | 1.5% |



2012 to 2011 Ridership Change by Provider

| <u>Provider</u> | <u>Rides</u> | <u>% Change</u> |
|--------------------|--------------|-----------------|
| Metro Transit | 80.3 M* | 0.2% |
| MTS - Contracted | 5.3 M | 4.7% |
| Suburban Providers | 5.1 M | -0.4% |
| University of MN | 3.2M | -9.5% |
| Ramsey Star | 42,300 | -21.9% |
| | ----- | ----- |
| Total | 93.9 M | 0.0% |


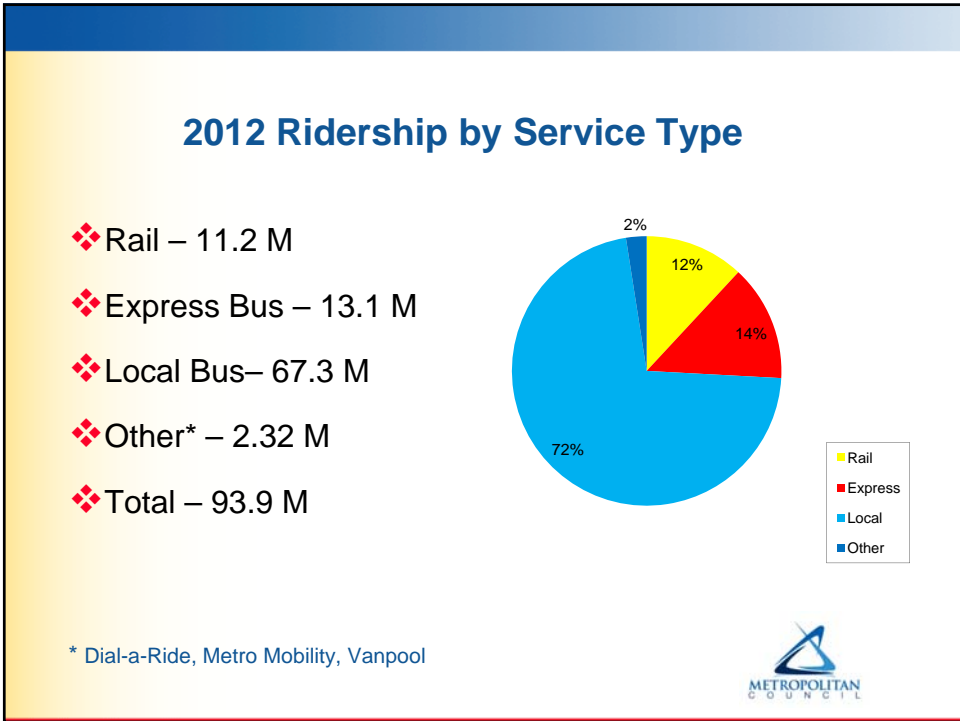
* Excludes 785,455 Maple Grove contracted rides



2012 to 2011 Average Weekday Ridership by Provider

| <u>Provider</u> | <u>Average Weekday Rides</u> | <u>% Change</u> |
|--------------------|------------------------------|-----------------|
| Metro Transit | 262,720* | 0.3% |
| MTS - Contracted | 15,773 | 5.7% |
| Suburban Providers | 19,917 | 0.2% |
| University of MN | 12,542 | -8.9% |
| Ramsey Star | 190 | -10.7% |
| | ----- | ----- |
| Total | 311,120 | 0.1% |

* Excludes Maple Grove contracted rides

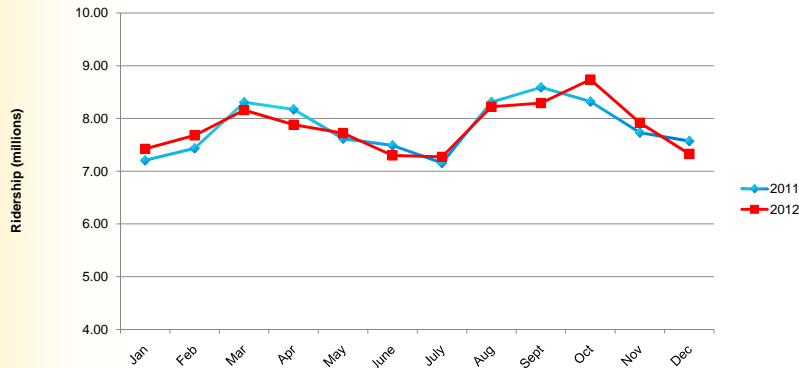



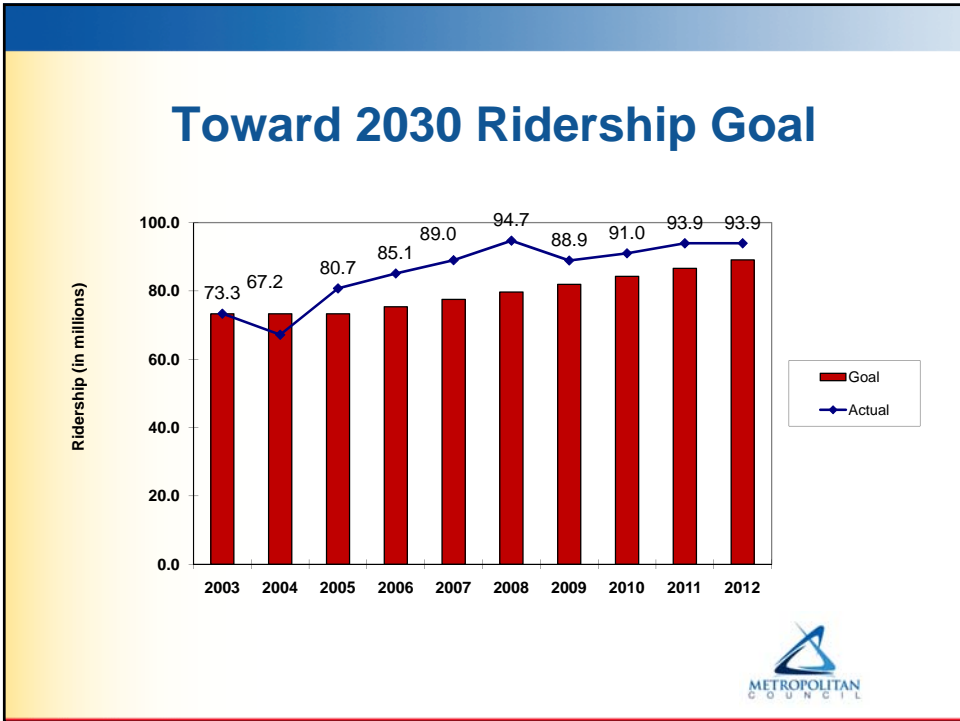
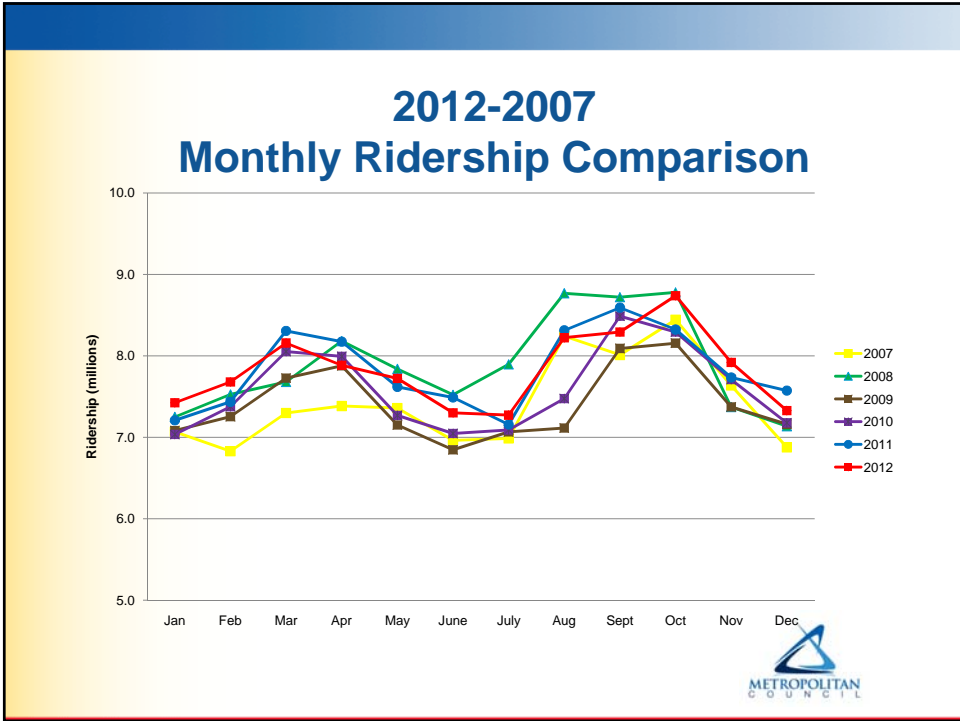
2012 to 2011 Ridership Change by Service Type

| Type of Service | % Change |
|-------------------|----------|
| Rail | 0.8% |
| Express Bus | -1.2% |
| Local Bus | -0.1% |
| Dial-a-Ride | -4.3% |
| Vanpool | 2.0% |
| ADA Complementary | 9.0% |
| Total | 0.0% |

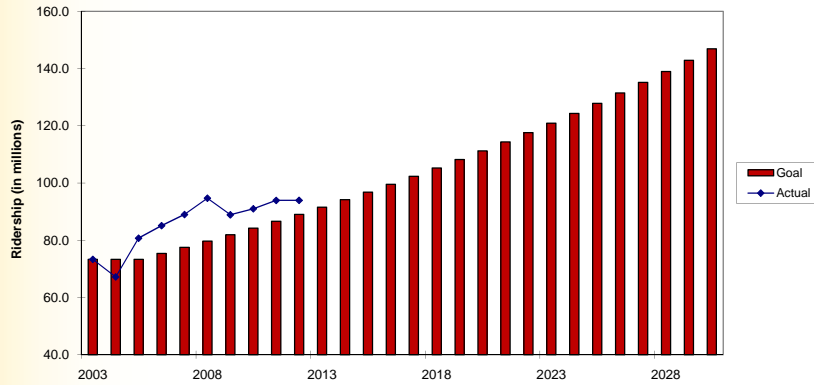


2012 - 2011 Monthly Ridership Comparison





2030 Regional Ridership Goal



2012 Fourth Quarter and 2012 Year-End Regional Ridership Report

Questions

