

Ongoing and Long Range Planning Activities

Regional Bicycle Planning

Transportation Committee
January 28, 2013



Introduction

- Council Bicycle Planning and Promotion Efforts
- Transportation Policy Plan Update
- Regional Bicycle System Master Study
- Next Steps

Why Now?

- Growing bicycle use in Twin Cities
- Growing interest in bikeway planning
- Complete Streets awareness
- More bike facilities constructed require more coordination



Ongoing Council Planning & Promotion Efforts

- Metro Transit – Service Planning, Marketing, Facilities
- Parks Department – regional trails
- MTS – long range planning, computer apps



Metro Transit Activities

- Service Planning
 - Bicycle/transit connections studies
 - Coordinating w/cities re local bike connections
 - Encouraging bike/transit usage
- Marketing
 - Bike locker rentals coordination
 - Promoting bicycle commuting (with TMOs)
 - Exploring feasibility of 3-space bike racks
- Facilities
 - GIS planning/tracking of bike facilities

Regional Parks Department Activities

- Designates regional trail corridors
- Develops Regional Parks Policy Plan
- Coordinates trails master planning with regional park implementing agencies



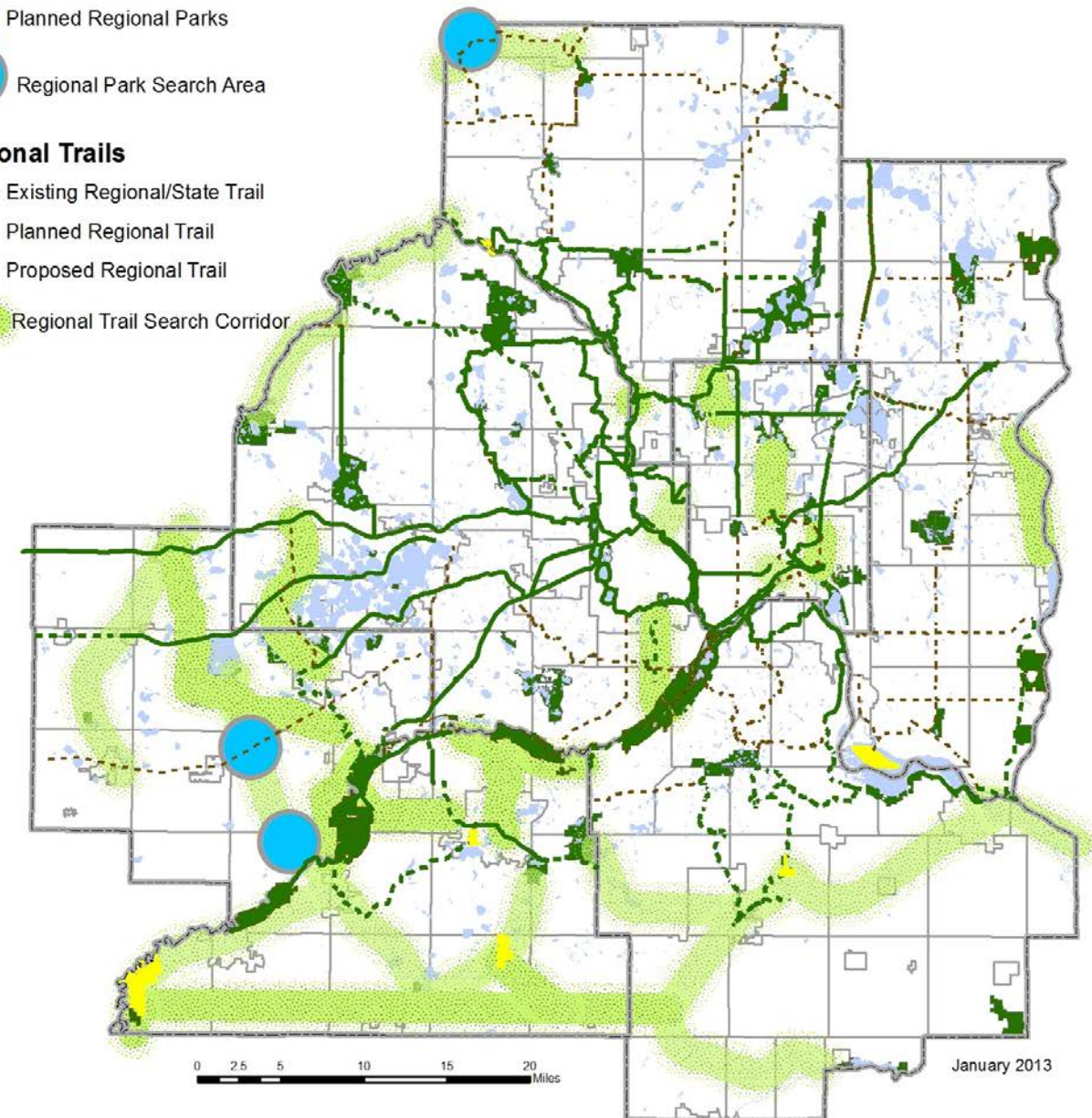
2030 Regional Parks System Plan

Regional Parks

- Regional/State Parks
- Planned Regional Parks
- Regional Park Search Area

Regional Trails

- Existing Regional/State Trail
- - - Planned Regional Trail
- - - Proposed Regional Trail
- Regional Trail Search Corridor



MTS Bicycle Planning Activities

- TPP policy planning
- Regional bicycle system inventory
- Bicycle trip tracking



TPP – What's in the 2030 plan?

- Issues and trends
- 2007 Regional Bicycle Facilities Map
- Comprehensive Plan requirements
- Bikeway connections to transit system
- Complete Streets policies



2040 TPP – Possible Updates

- Regional and local jurisdictional roles
- Regional Bikeway Corridors policies
- Updated Regional Bicycle System Map
- Investment prioritization policies
- Performance measures and monitoring guidelines
- Policies related to system preservation & maintenance

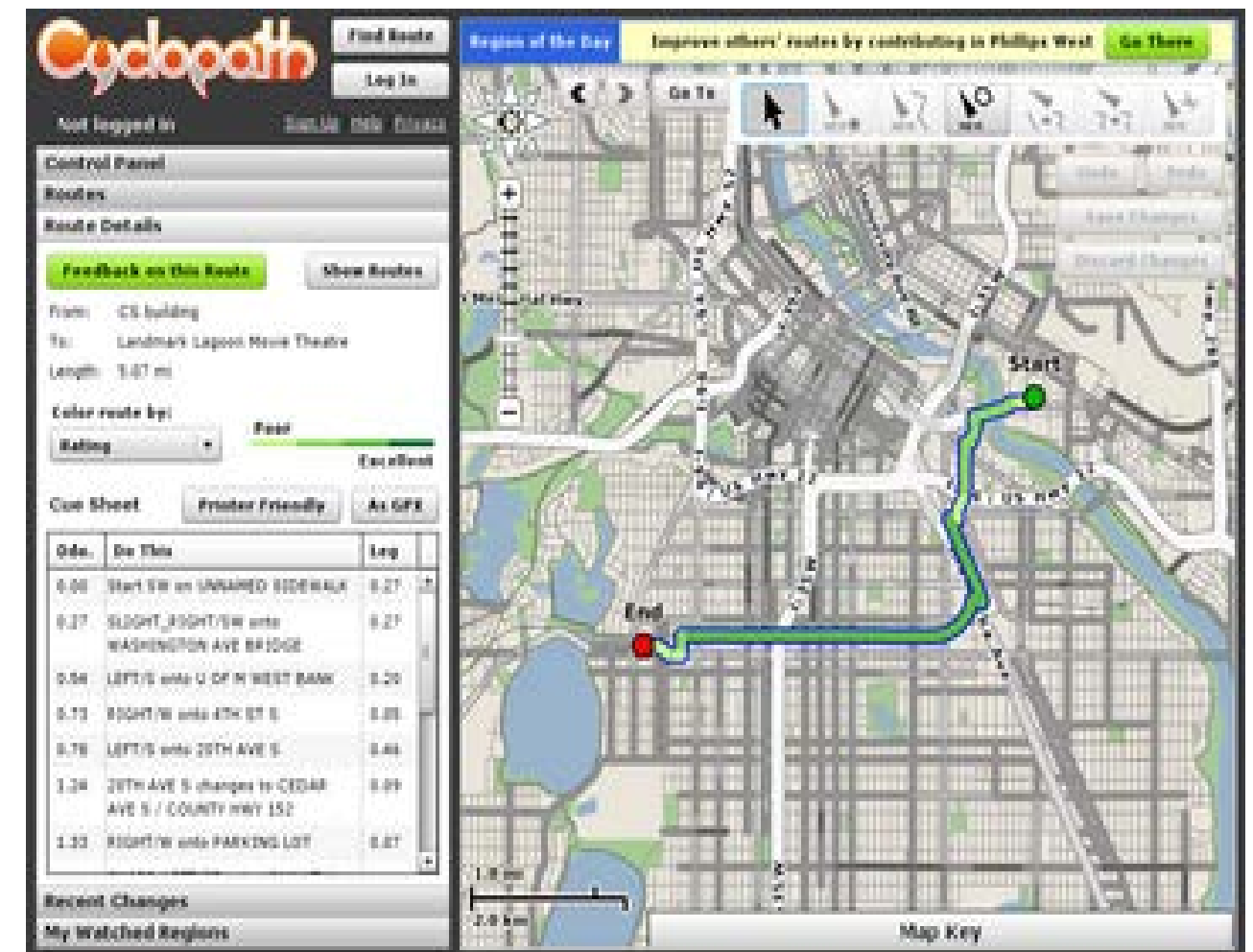
Using Cycle Tracks for voluntary bike trip tracking

- Smartphone app uses iPhone/Android GPS support to track bike trips.
- Collects/compiles data on trip purpose, route, date, time of day, duration.
- Possible to record average speed and elevation change.



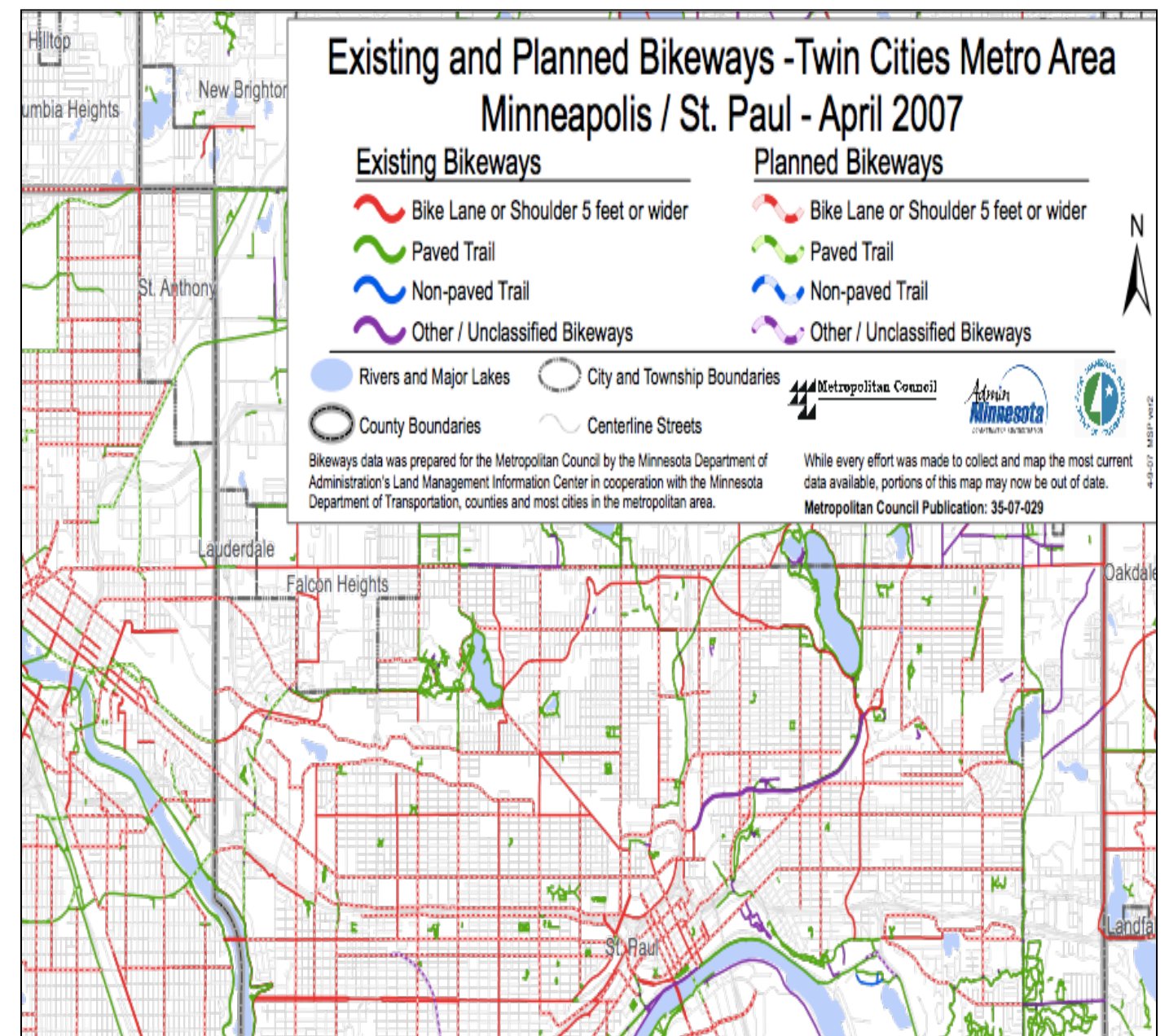
Use of CycloPath & CycloPlan in Regional Bicycle Planning

- CycloPath: web-based route finding tool
- CycloPlan: set up to house the “official” regional bicycle inventory/system plan
- Regional application: coordination/integration with city and county bike plans



Regional Bicycle System Master Study

- Goal: to develop better understanding of regional bicycle network & how to improve it
- Regular study PMT and PSC meetings
- Four sub-regional focus groups
- Four public workshops



Regional Bicycle System Master Study

Study analysis tasks

- Define role/criteria for regional bicycle corridors
- Evaluate connectivity of existing network
- Determine key regional destinations
- Identify gaps and barriers in existing/planned system
- Identify “missing corridors”

Regional Bicycle Master Study

Major study products

- Proposed Regional Bikeway Corridors
- Proposed Regional Bicycle System map
- Framework of performance measures



Regional Bicycle Planning Process

Phase I: Bicycle System Master Study

Feb. – Oct. 2013

Draft Regional Bikeway Corridors

Draft Regional Bicycle System Map

Framework for performance management

Phase II: Regional Bicycle System Plan (TPP)

April 2013 - Fall 2014

Regional Bikeway Corridors

Regional Bicycle System Map

Review and update regional policies

Performance measures & guidelines

Work program for implementation

Phase III: Implementation

2014 and Beyond

TPP Implementation

- Future studies
- Data collection
- Performance evaluation
- Promotional efforts
- Regional solicitation criteria

Regional Bicycle Planning Next Steps

- Kick-off Bicycle System Master Study
- Staff review of TPP policies and strategies
- Public workshops/focus groups

Ongoing and Long Range Planning Activities

Regional Bicycle Planning

Transportation Committee
January 28, 2013

