

# **2013 First Quarter Regional Ridership Report**

Transportation Committee

June 10, 2013

## 1<sup>st</sup> Quarter - 2013 vs 2012 Total Ridership by Provider

<u>Provider</u>	<u>Rides</u>	<u>% Change</u>
Metro Transit	19.2 M*	-2.4%
MTS - Contracted	1.33 M	1.5%
Suburban Providers	1.24 M	-3.3%
University of MN	790,000	-17.2%
	-----	-----
Total	22.6 M	-2.8%

\* Excludes 199,771 Maple Grove contracted rides

# 1<sup>st</sup> Quarter - 2013 vs 2012

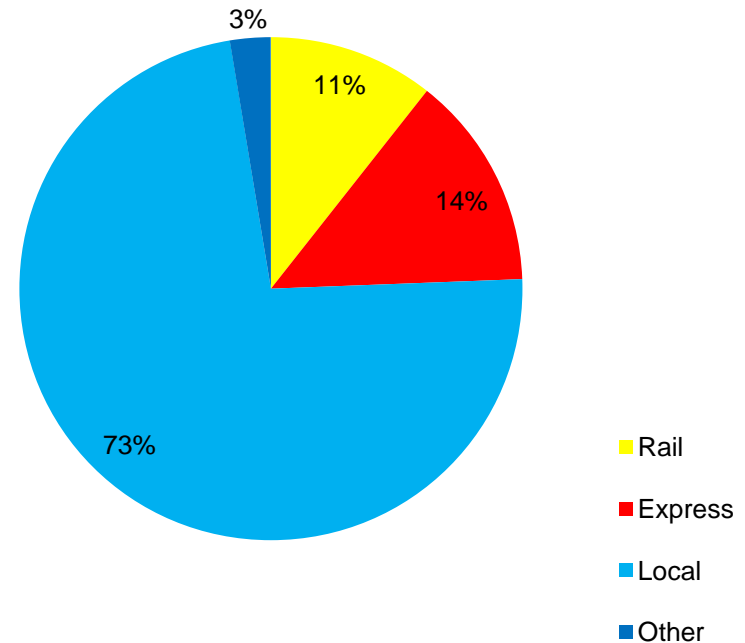
## Average Weekday Ridership by Provider

<u>Provider</u>	<u>Average Weekday Rides</u>	<u>% Change</u>
Metro Transit	251,683*	-2.2%
MTS - Contracted	19,300	2.0%
Suburban Providers	19,380	-0.8%
University of MN	12,443	-16.0%
	-----	-----
Total	302,807	-2.5%

\* Excludes Maple Grove contracted rides

# 1st Quarter 2013 by Service Type

- ❖ Rail – 2.4 M
- ❖ Express Bus – 3.1 M
- ❖ Local Bus – 16.5 M
- ❖ Other\* – .59 M
- ❖ Total – 22.6 M

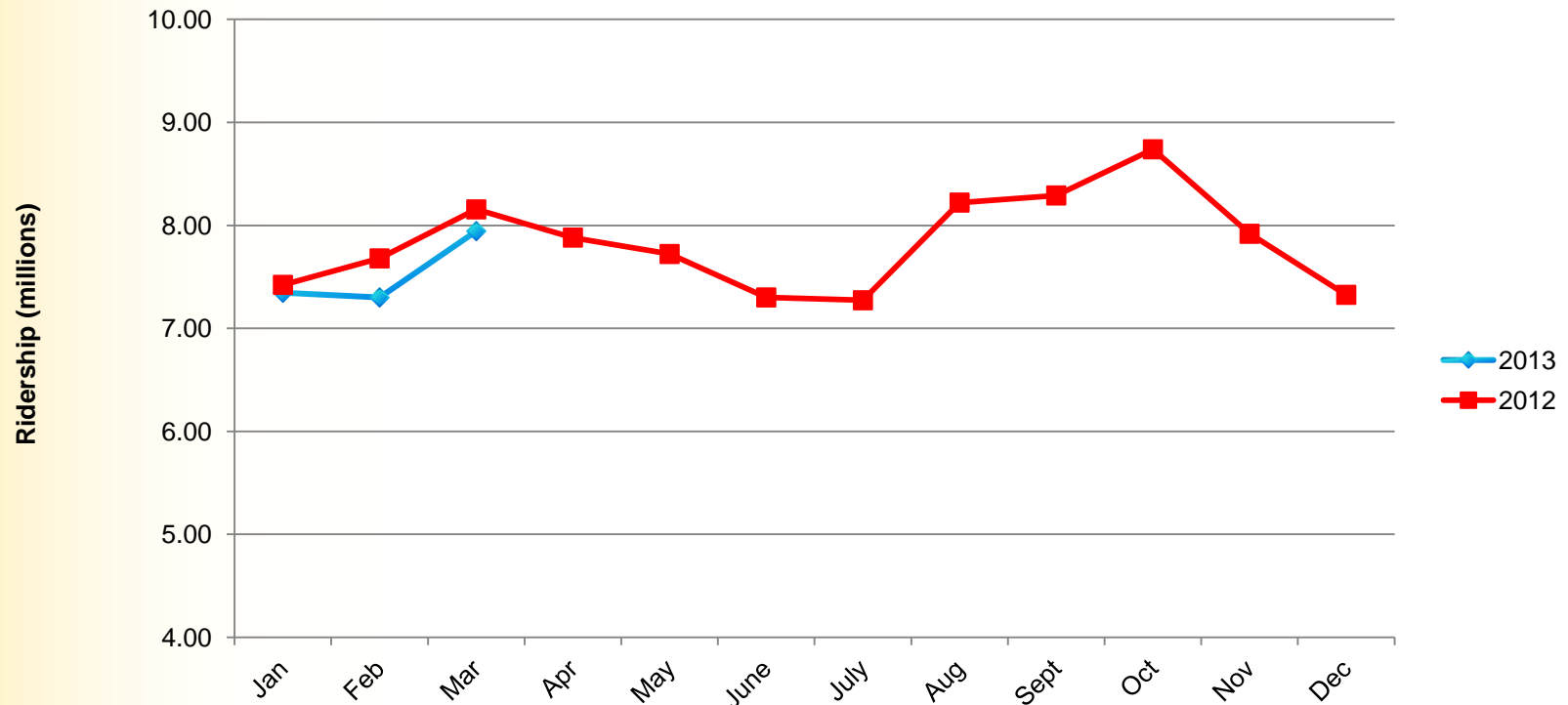


\* Transit Link, Metro Mobility, Vanpool

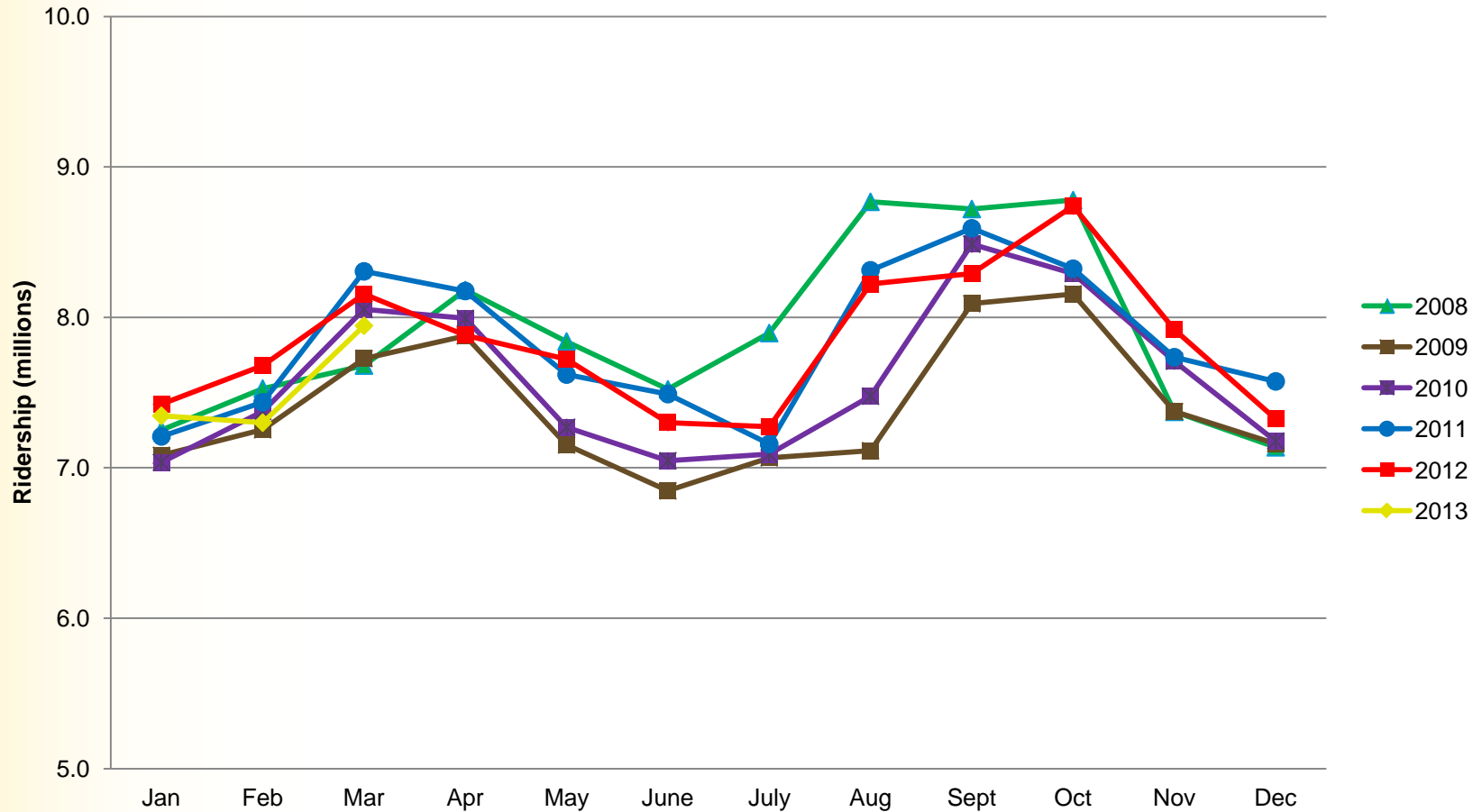
## 1st Quarter - 2013 vs 2012 Comparison by Service Type

<u>Type of Service</u>	<u>% Change</u>
Rail	-0.9%
Express Bus	-5.9%
Local Bus	-2.7%
Transit Link	-5.7%
Metro Vanpool	5.3%
Metro Mobility	<u>4.6%</u>
Total	-2.9%

# 2013 - 2012 Monthly Comparison



# 2013-2008 Monthly Comparison



# 2013 First Quarter Regional Ridership Report

## Questions