

Highway 610 & Noble Parkway Park and Ride



Transportation Committee

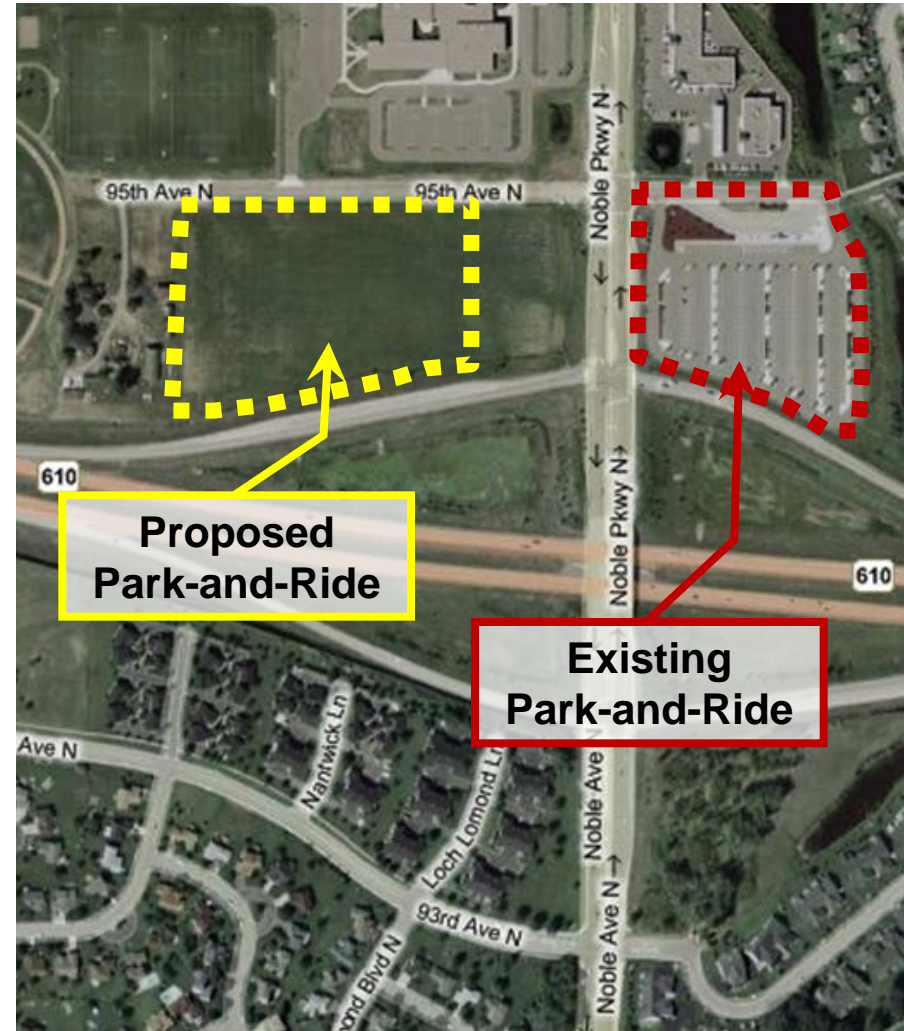
May 13, 2013

James Harwood

Engineering & Facilities

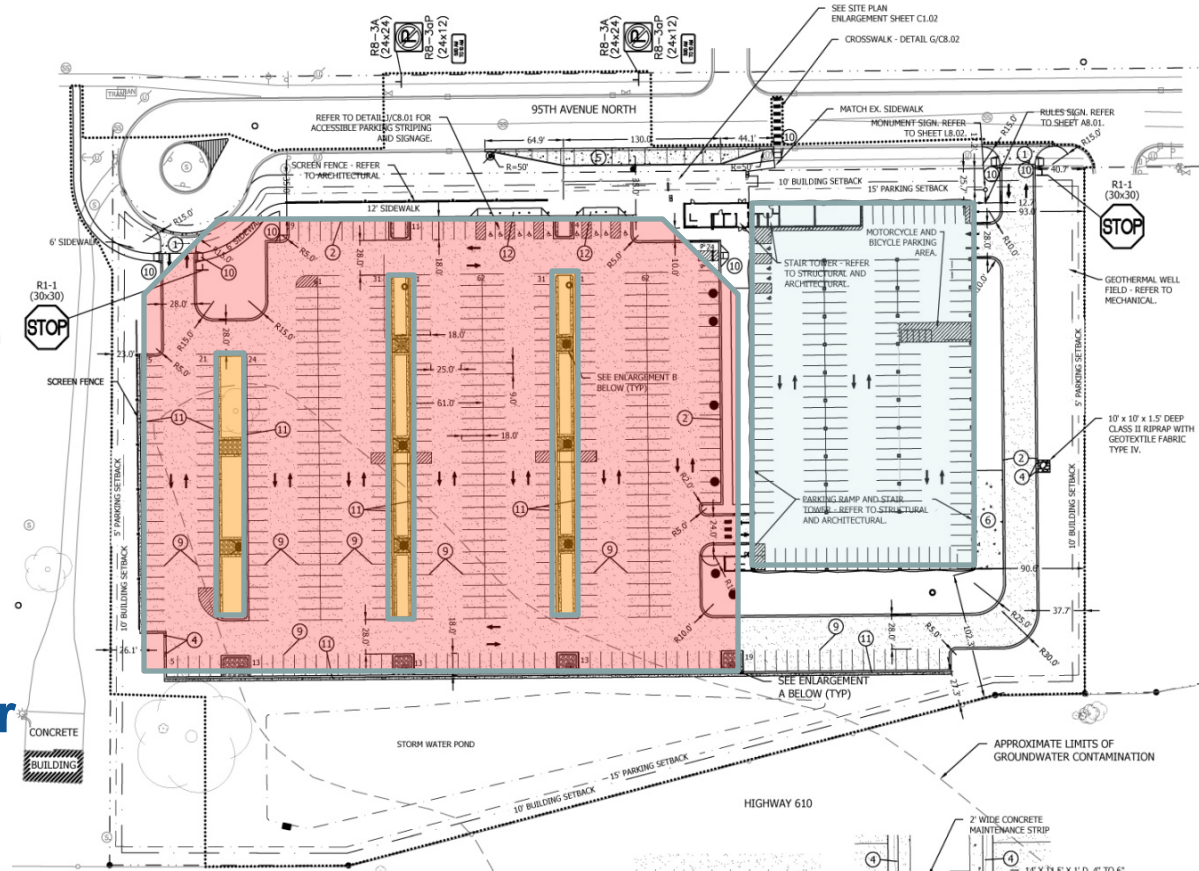
Existing 610 & Noble Park and Ride

- Existing facility in NE quadrant of 610 & Noble
- Opened in 2000 with 511 surface spaces
- 90%+ utilization since 2006
- Projected demand of 1000
- 9.22 acres acquired via condemnation in 2011



Proposed Park and Ride

- 1000 car capacity between surface lot and ramp
- Access from 95th Ave.
- Bus Turnaround in 95th Ave.
- Storm water pond
- Landscaped islands for storm water collection



Project Features

- Solar Photovoltaic Energy Production
- Geothermal heating and cooling systems
- Electric vehicle charging stations
- Customer waiting areas with heating and lighting
- Bicycle racks



Requested action:

- **Authorize Regional Administrator to award and execute construction contract with Knutson Construction at a cost of \$8,363,040.**

Funding:

- **CMAQ grant was awarded in 2007 for project construction.**
- **Funding is available in project 62115.**



Questions?