

2013 Third Quarter Regional Ridership Report

Transportation Committee
November 25, 2013

3rd Quarter 2013 to 2012 Comparison by Provider

<u>Provider</u>	<u>Rides</u>	<u>% Change</u>
Metro Transit	20.9 M*	1.4%
MTS - Contracted	1.45 M	11.3%
Suburban Providers	1.38 M	2.7%
University of MN	505,000	-4.5%
	-----	-----
Total	24.2 M	1.9%

* Excludes 195,376 Maple Grove contracted rides

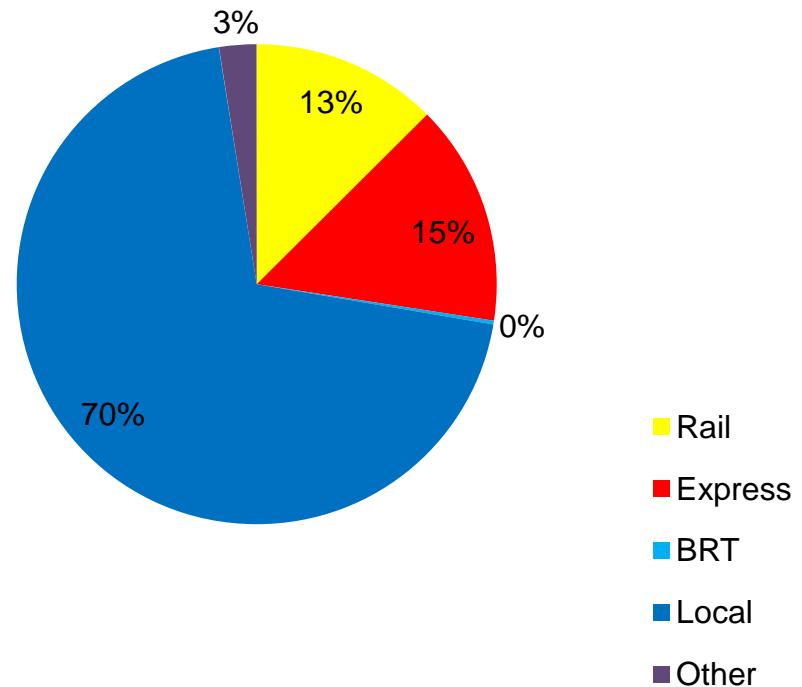
3rd Quarter 2013 to 2012 Average Weekday Ridership by Provider

<u>Provider</u>	<u>Average Weekday Rides</u>	<u>% Change</u>
Metro Transit	267,368*	1.3%
MTS - Contracted	20,843	10.5%
Suburban Providers	20,279	1.8%
University of MN	8,012	-6.7%
	-----	-----
Total	316,502	1.4%

* Excludes Maple Grove contracted rides

3rd Quarter 2013 by Service Type

- ❖ Rail – 3.0 M
- ❖ Express Bus – 3.6 M
- ❖ BRT – 62,438
- ❖ Local Bus – 16.9 M
- ❖ Other* – .61 M
- ❖ Total – 24.2 M

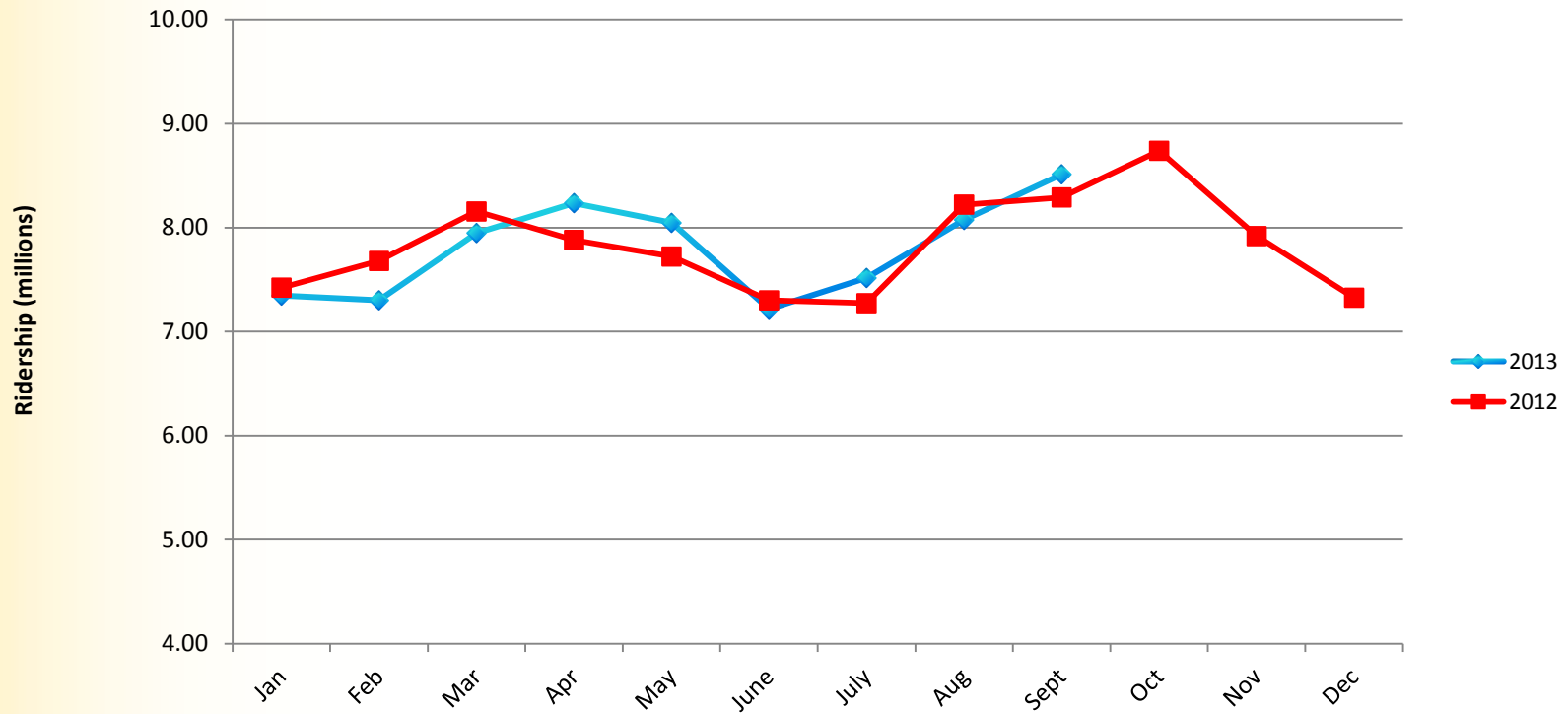


* Dial-a-Ride, Metro Mobility, Vanpool

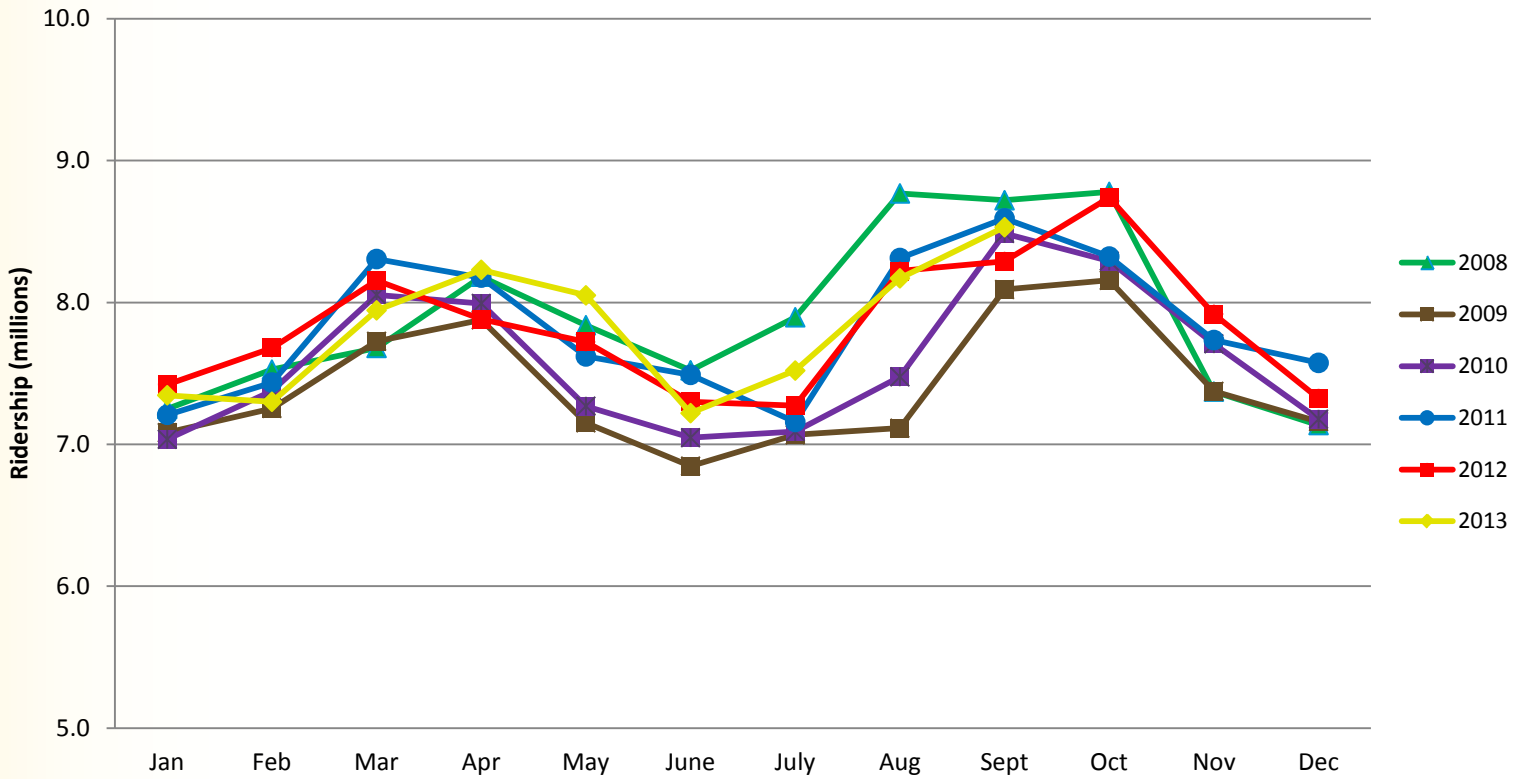
3rd Quarter 2013 to 2012 Comparison by Service Type

<u>Type of Service</u>	<u>% Change</u>
Rail	-0.9%
Express Bus	1.9%
BRT	N/A
Local Bus	1.1%
Dial-a-Ride	14.3%
Vanpool	0.8%
Metro Mobility	<u>5.5%</u>
Total	1.1%

2013 - 2012 Monthly Comparison



2013-2008 Monthly Comparison



2013 Third Quarter Regional Ridership Report

Questions