

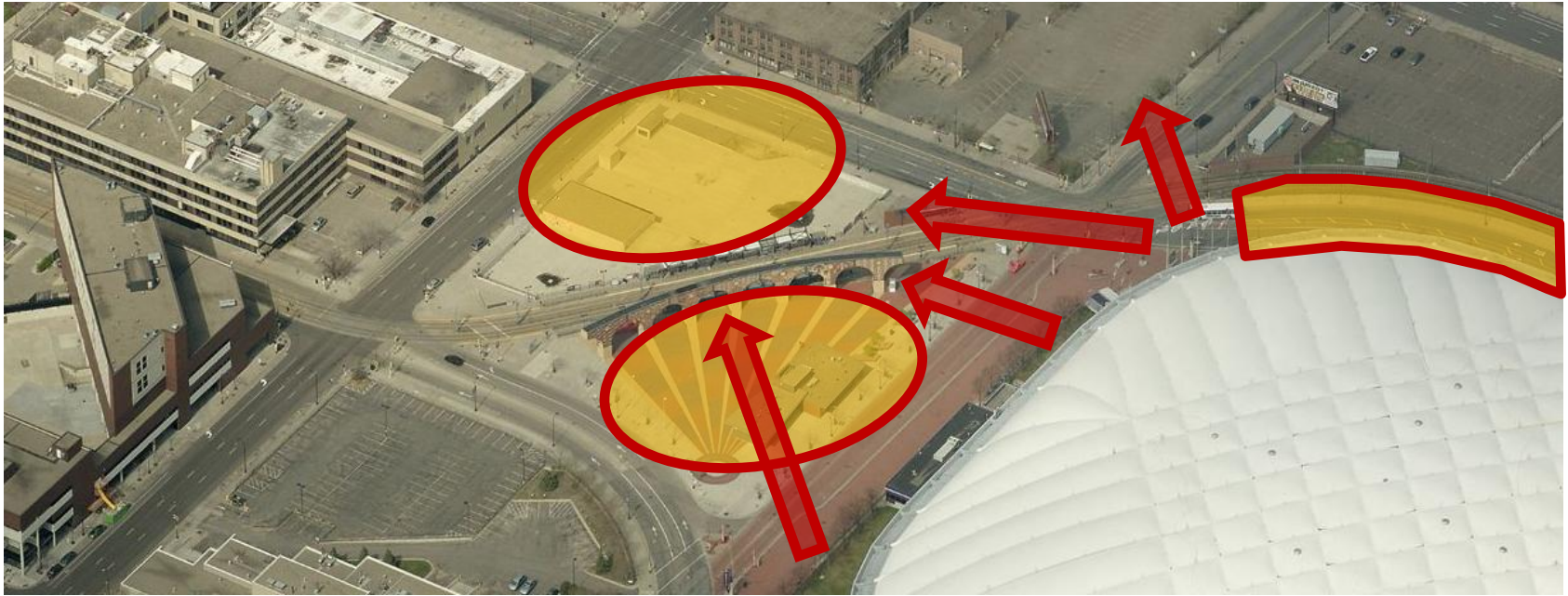


Downtown East / Vikings Stadium Transit Planning

Transportation Committee August 25, 2014



Jim Harwood, Principal Engineer
Engineering & Facilities



- Capacity for queuing of customers
 - 40% transit mode split target
 - 26,000+ customers w/ Southwest & Bottineau LRT
- Pedestrian access – especially at Chicago & 4th Street
- Permanent bus layover facility for regular service



Operations and Queuing

- Downtown East Ramp block required for queuing post event to accommodate projected ridership.
- Northwest corner of the block to be developed as open plaza for LRT operations and non event day functions.
- Southeast corner of block to undergo minimal renovations to improve LRT queuing operation and platform access.





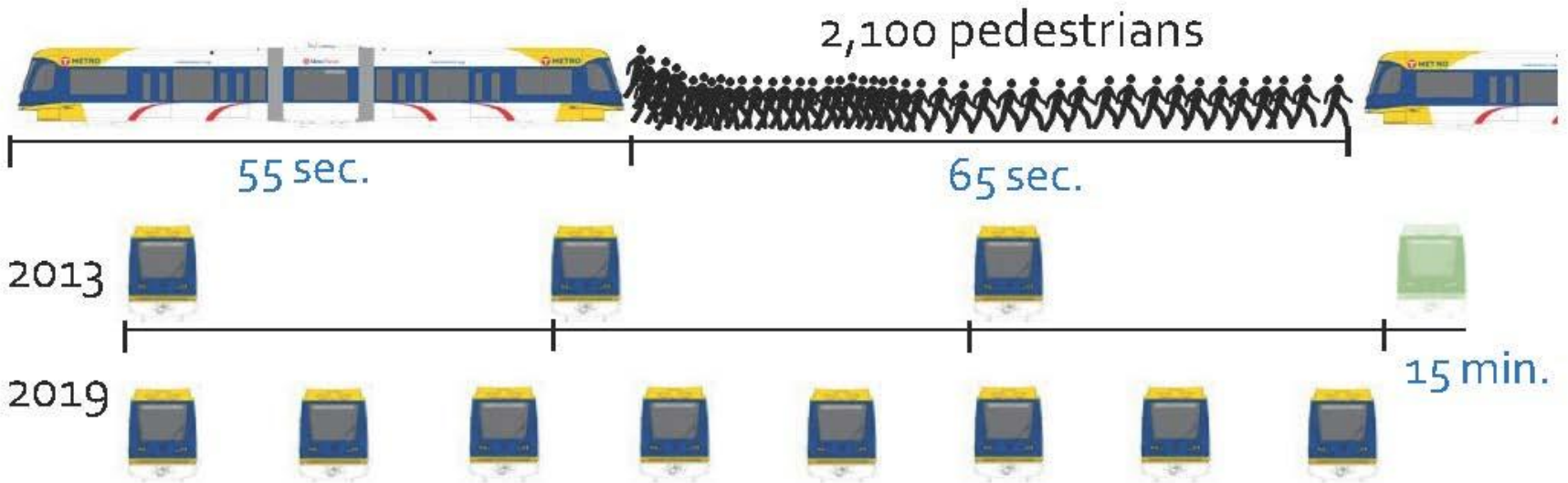
LRT Operations

- Regular Revenue Service = 5 minute combined headways
 - A train will pass through the intersections of 4th and Chicago Avenue and 5th Street and Park Avenue every 2.5 minutes on average
- Game Day “special” trains
 - Increased frequency = train passing intersection every 2 minutes on average

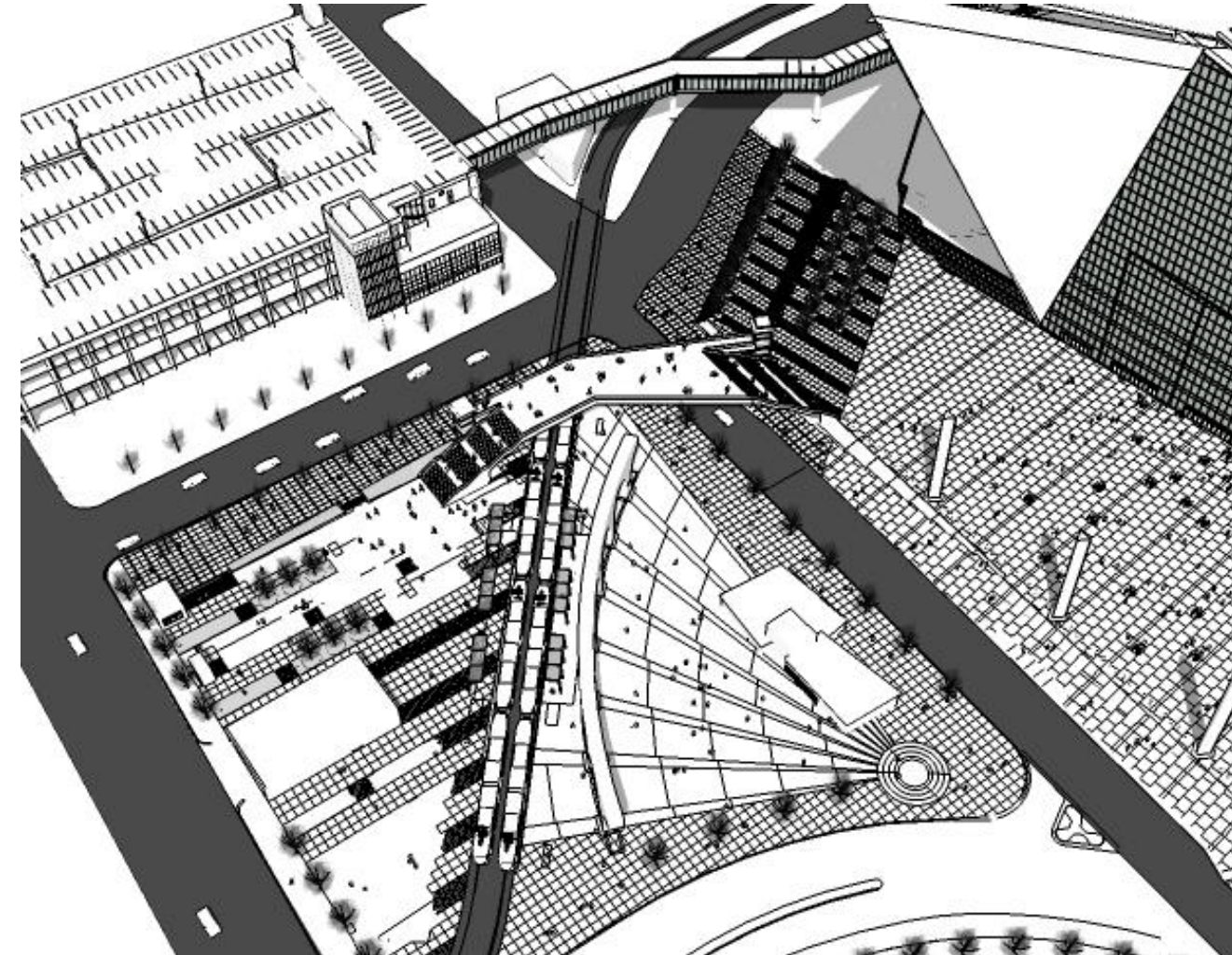
Pedestrian LRT Crossing



12 trains per hour per direction
+ 5 special event trains
= Average 120 seconds headway (two-way)



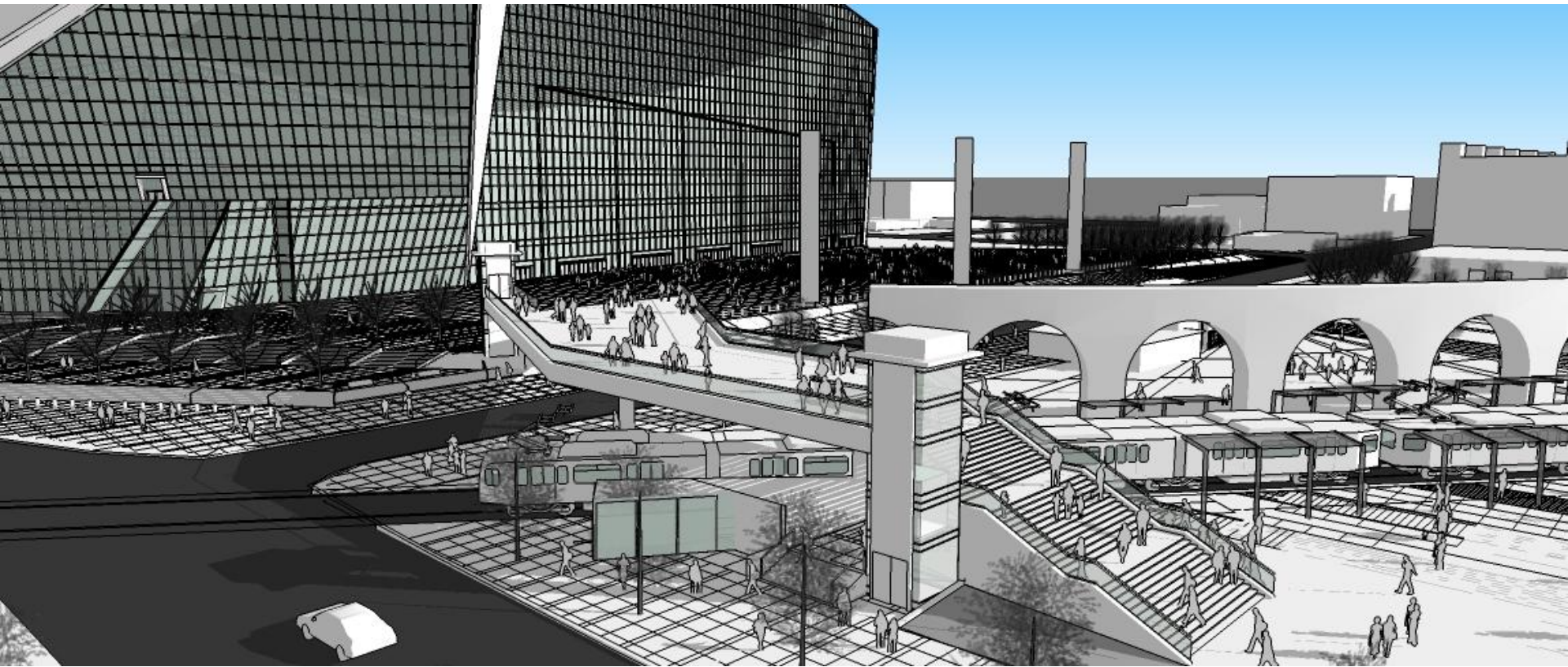
Schematic Pedestrian Bridge



Optimal Pedestrian Flow

- Pedestrian bridge integrated with LRT queuing and operation
- Provide control of 4th St. at-grade crossing

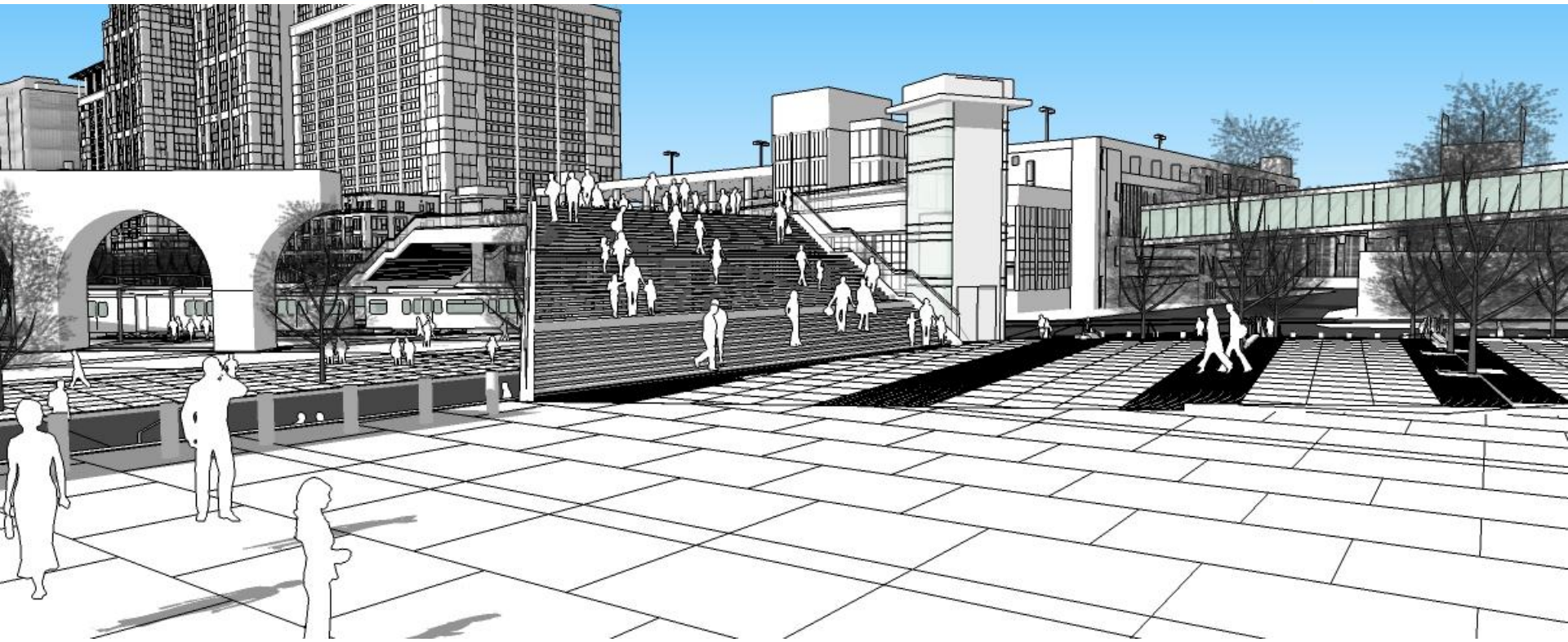
Schematic Pedestrian Bridge



Optimal Pedestrian Flow

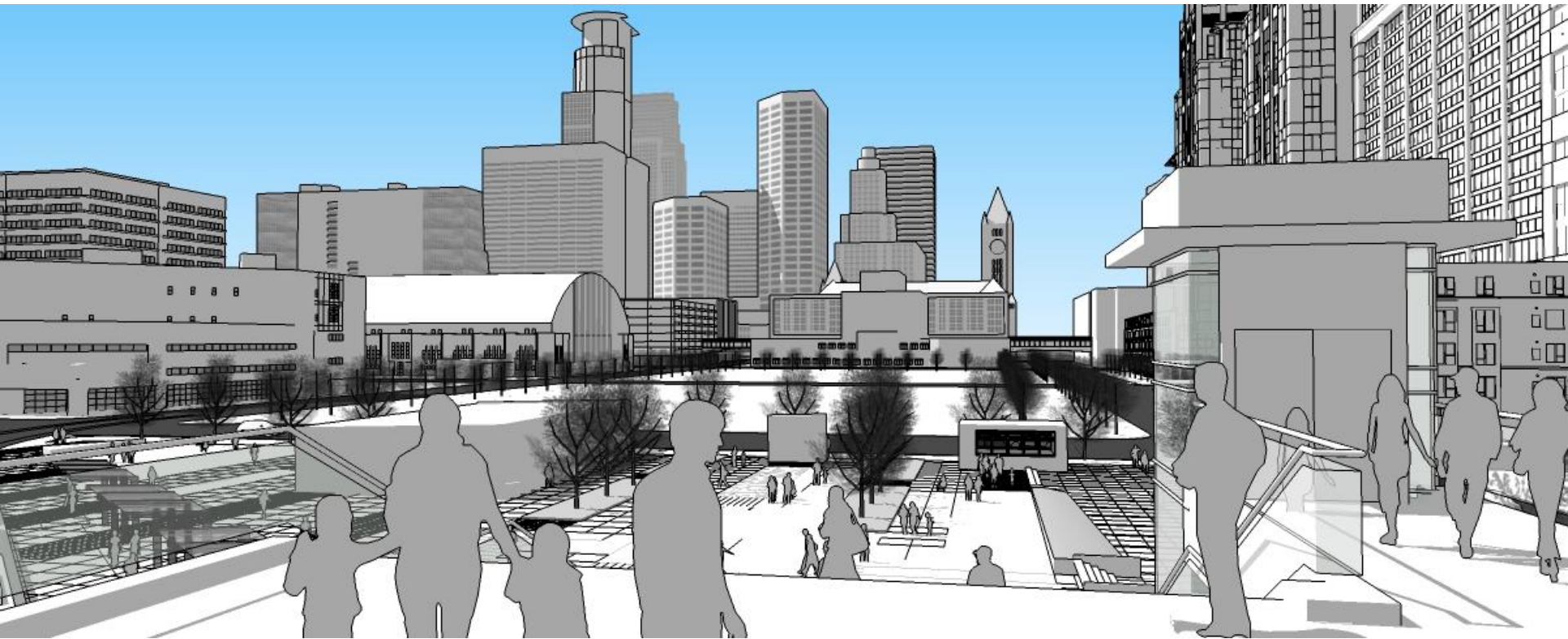
- Extends the plaza experience
- Clearly visible from stadium doors
- Safely conveys people across LRT tracks

Schematic Pedestrian Bridge



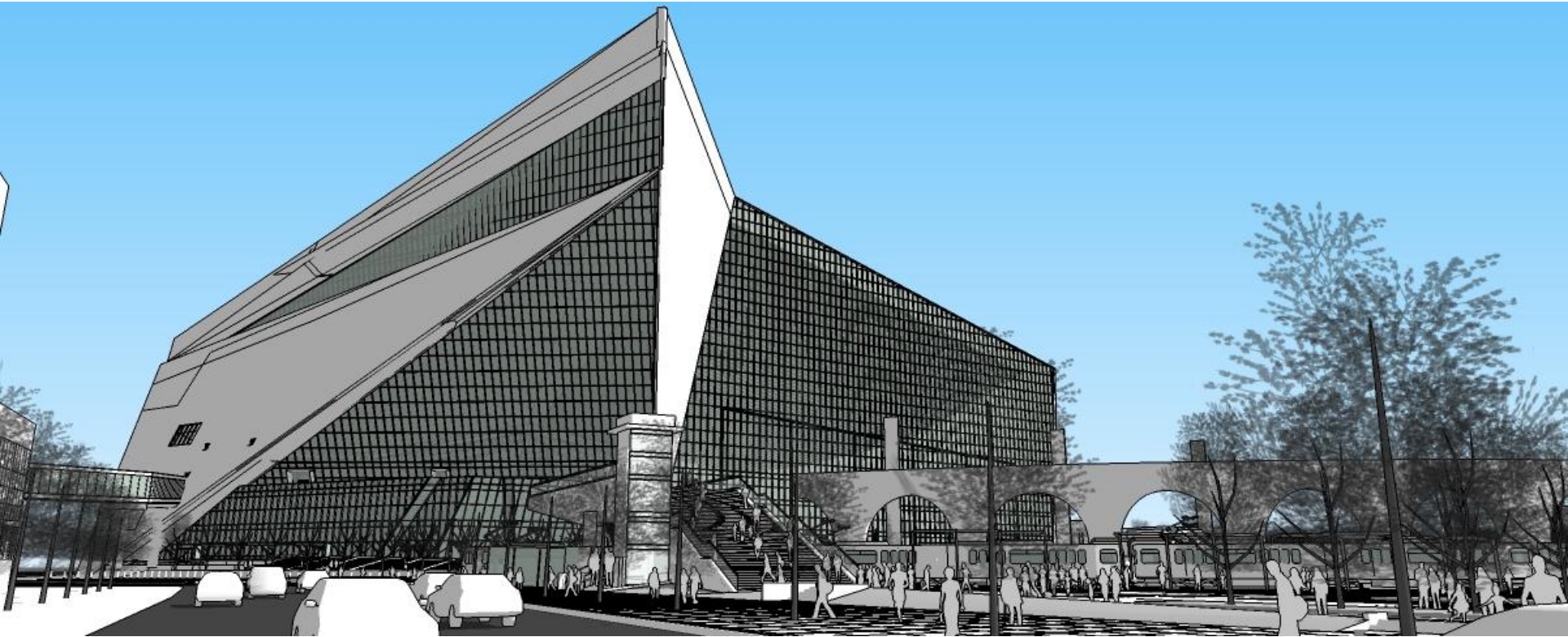
Optimal Pedestrian Flow

- Safely conveys people across LRT tracks
- Extends the plaza experience
- Clearly visible from stadium doors



Optimal Pedestrian Flow

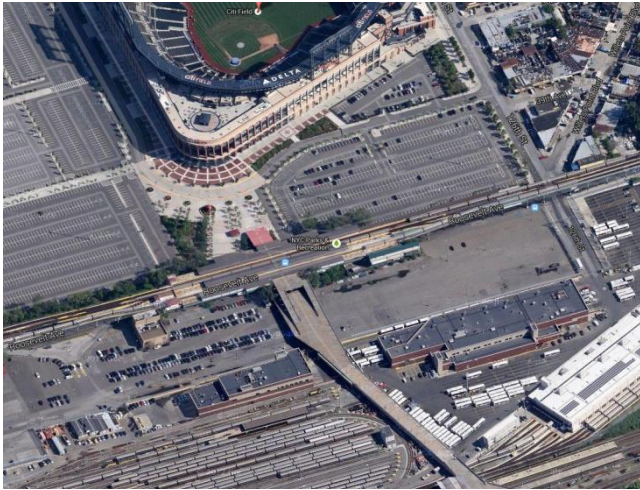
- Extends the plaza experience
- Maintains ample queuing space for LRT boarding



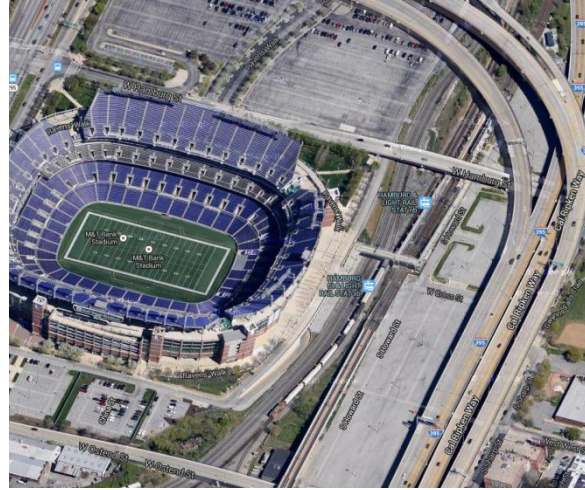
Optimal Pedestrian Flow

- Safely conveys people across LRT tracks
- Alignment with 4th Avenue clearly indicates travel pattern

Examples of Pedestrian Bridges



Citi Field, New York, NY



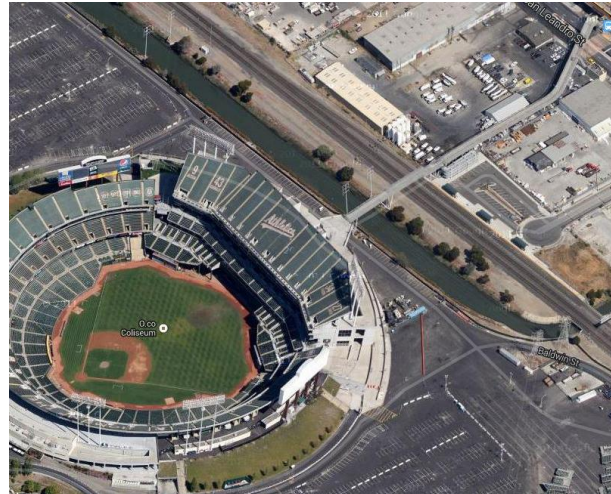
M&T Bank Stadium, Baltimore, MD



Caxton Roma, Brisbane, AU



Apogee Stadium, Denton, TX

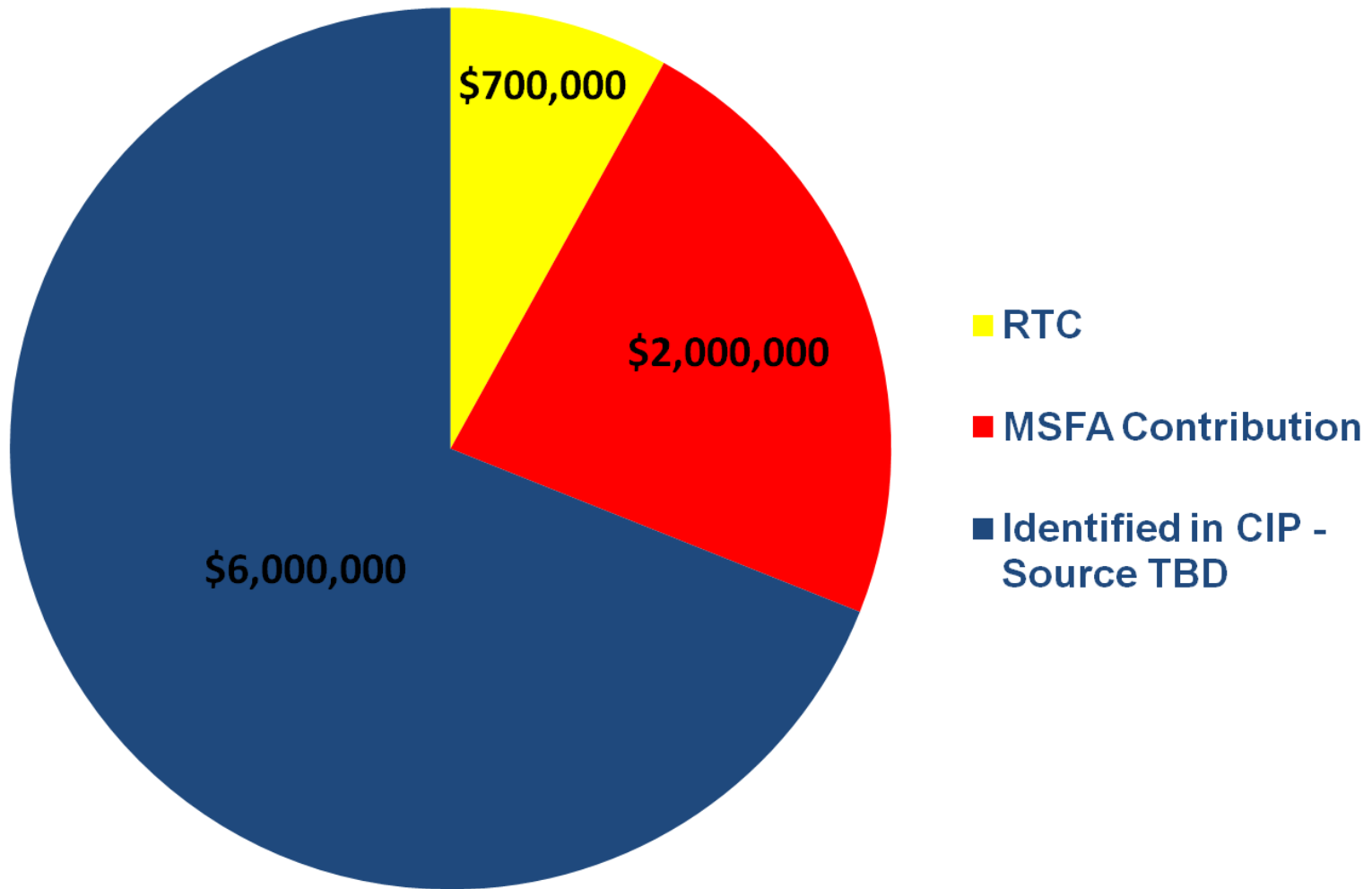


County Coliseum, Oakland, CA



Giants Stadium, Rutherford, NJ

DTE Area Enhancement Funding





- Memo of Understanding with MSFA
- Issue Request for Proposals
- Execution and recording of agreements
 - Development Agreements
 - Easements
 - Operation and Maintenance Agreements
- Coordinate with project stakeholders to integrate LRT Station with area improvements & pedestrian crossings

Questions?