



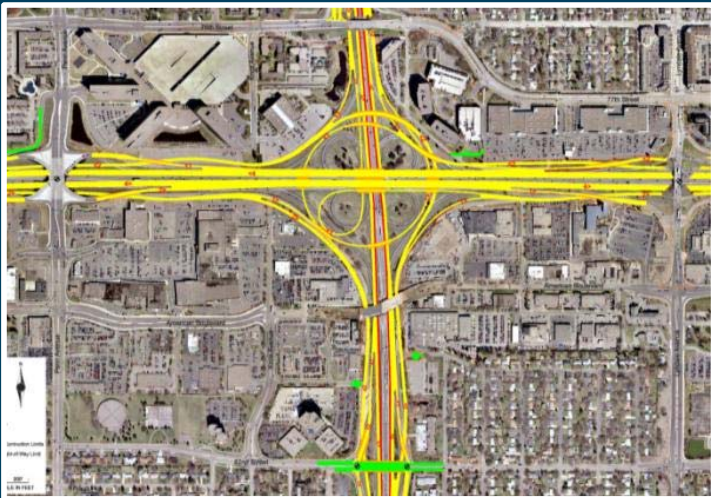
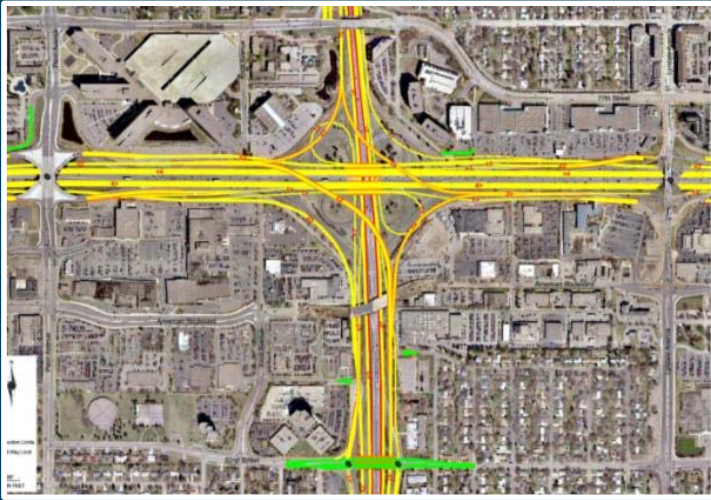
# I-494/I-35W Interchange Vision Layout Development with Orange Line Transit Facility Metropolitan Council Transportation Committee Meeting

April Crockett, PE MnDOT Project Manger  
Christina Morrison, Senior Planner Metro Transit

We all have a stake in **A**  **B**



# Project Background



- FEIS Concept
  - Inability to Phase the concept resulting in high project cost
- 2010 Interchange Study
  - Re-evaluated FEIS alternative
  - Provided Construction Phasing Opportunities
  - Recognized the need for the Transit Facility
- Vision Layout
  - Select and refine interchange concept as the “vision layout”
  - Identify cost effective Phase 1 project
  - Select METRO Orange Line alignment



# Project Location



## Project Goals

- Improve safety and traffic operations
- Provide a phased implementation of the interchange
- Accommodate BRT station and/or Park and Ride facility
- Address storm water impacts and develop low cost/high benefit alternatives



# Vision Layout

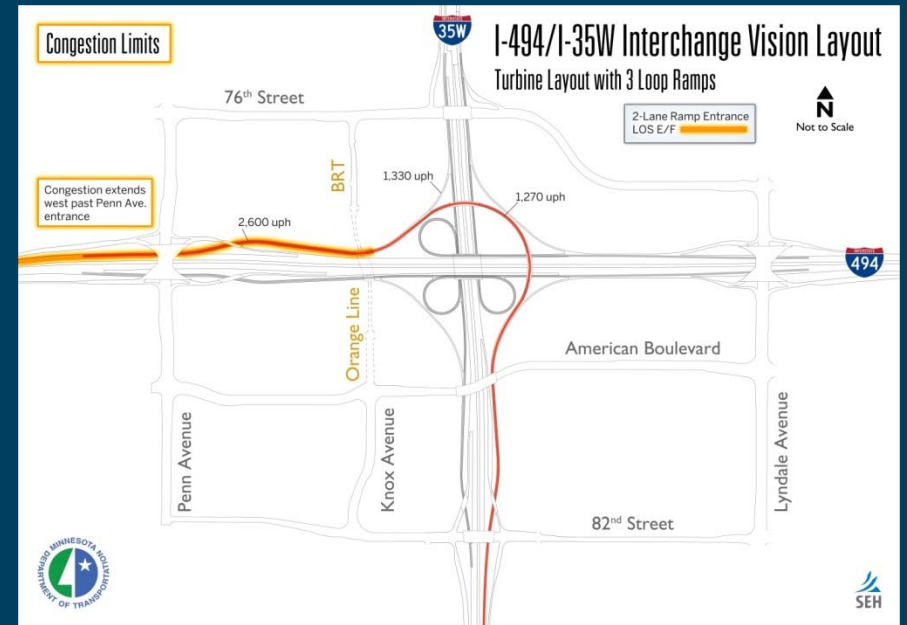
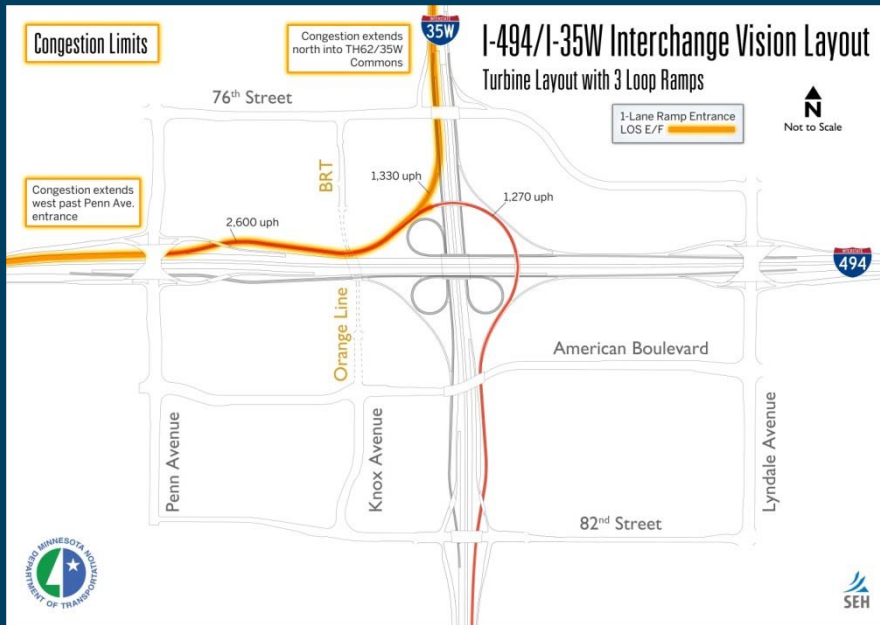
- ▶ Project limits focused between Lyndale Avenue and Penn Avenue on I494 and between 76<sup>th</sup> Street and 82<sup>nd</sup> Street on I 35W
- ▶ Selected Turbine interchange configuration
  - Ramp geometrics, Local Access and bridge braids (Penn and 82<sup>nd</sup>), ponding
- ▶ Identification of Orange Line BRT Preferred Alignment and station
- ▶ \$200M (interchange only improvements)



# Phase 1 – Turbine Interchange



# Turbine Interchange– Phase 1

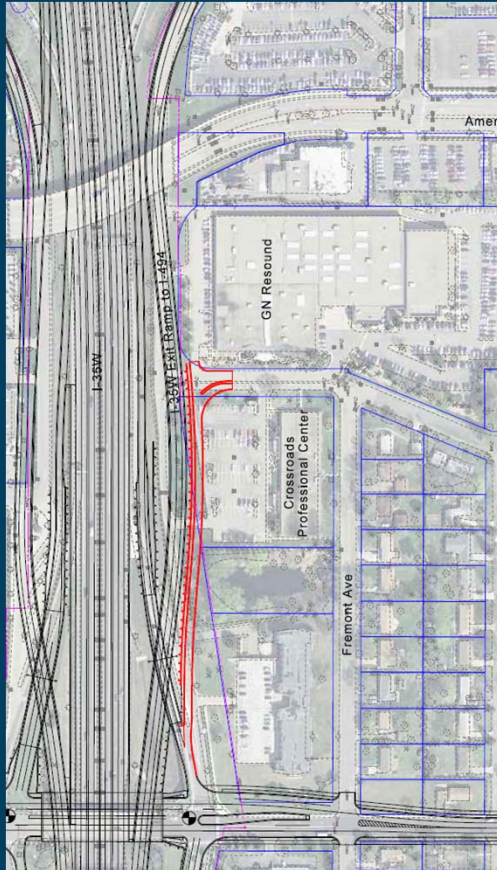


Traffic queue with 1-lane ramp

Traffic queue with 2-lane ramp



# Phase 1 Interchange Right-of-Way Impacts



East side of I 35W

North side of I 494



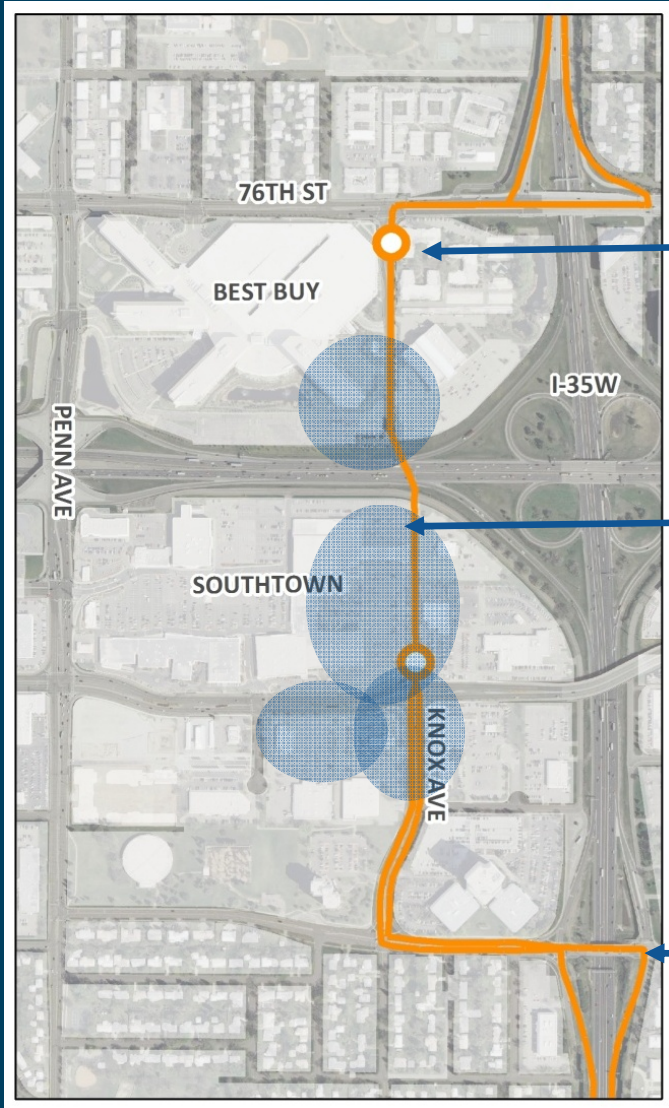
# Interchange Next Steps

- ▶ Secure funding and program a project (Phase 1)
- ▶ Environmental Document
- ▶ Staff Approved Geometric Layout
- ▶ Prepare Final Plans
- ▶ Construct Phase 1





# Orange Line Preferred Routing



STATIONS ALONG  
KNOX AVENUE

NEW CONNECTION UNDER  
494 FOR TRANSIT, BIKES,  
AND PEDS

NEW PARK & RIDE  
(LOCATION TBD)

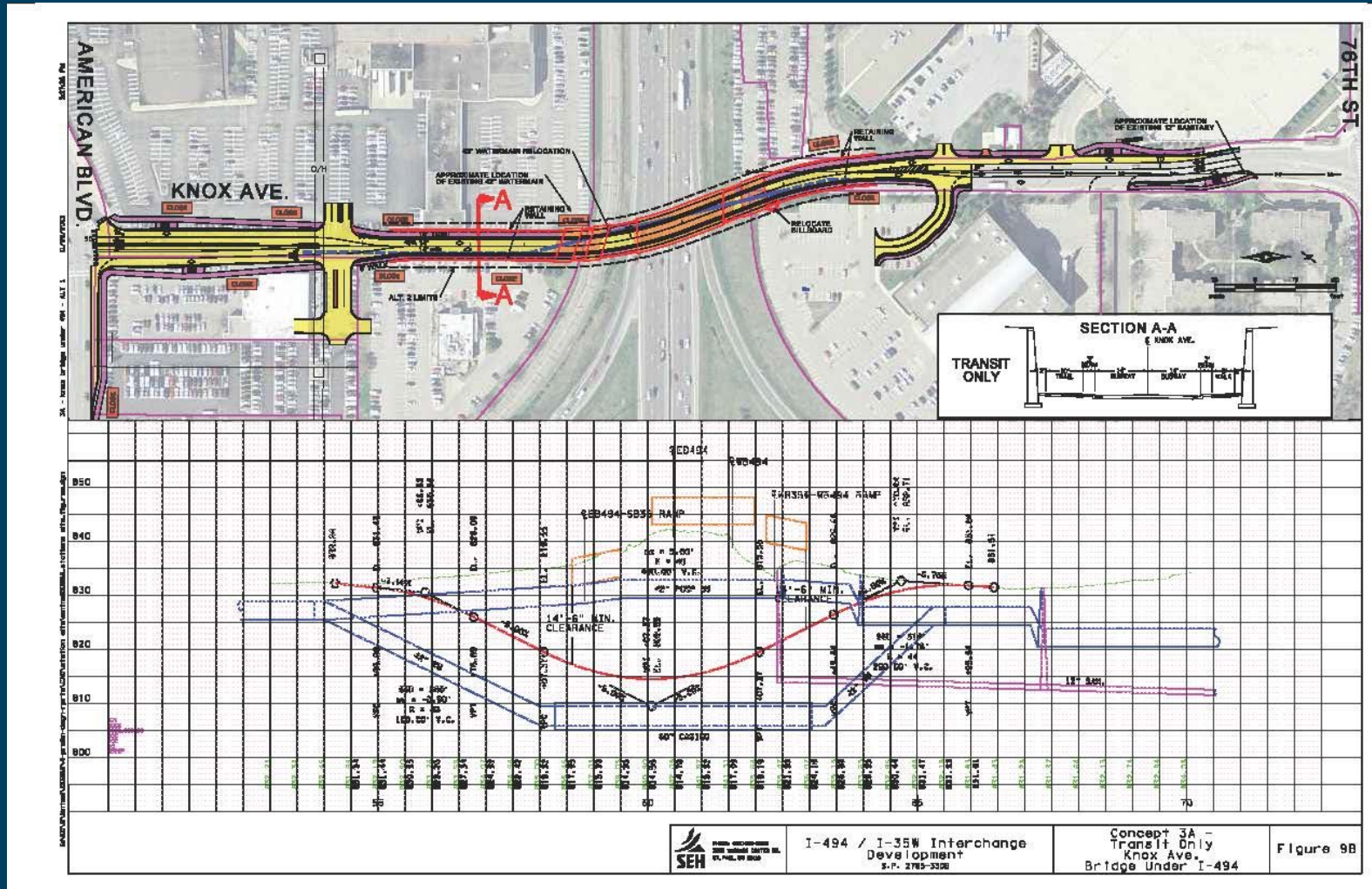
USES EXISTING RAMPS



 Metro Transit



# Transit Next Steps



# Questions?

