

2013 Year End Regional Ridership Report

Transportation Committee
February 10, 2014

Fourth Quarter 2013 to 2012 Comparison by Provider

| <u>Provider</u> | <u>Rides</u> | <u>% Change</u> |
|--------------------|--------------|-----------------|
| Metro Transit | 20.2 M* | -0.4% |
| MTS - Contracted | 1.49 M | 9.2% |
| Suburban Providers | 1.26 M | 2.1% |
| University of MN | 1.01M | -6.5% |
| | ----- | ----- |
| Total | 24.0 M | 0.0% |

* Excludes 198,266 Maple Grove contracted rides

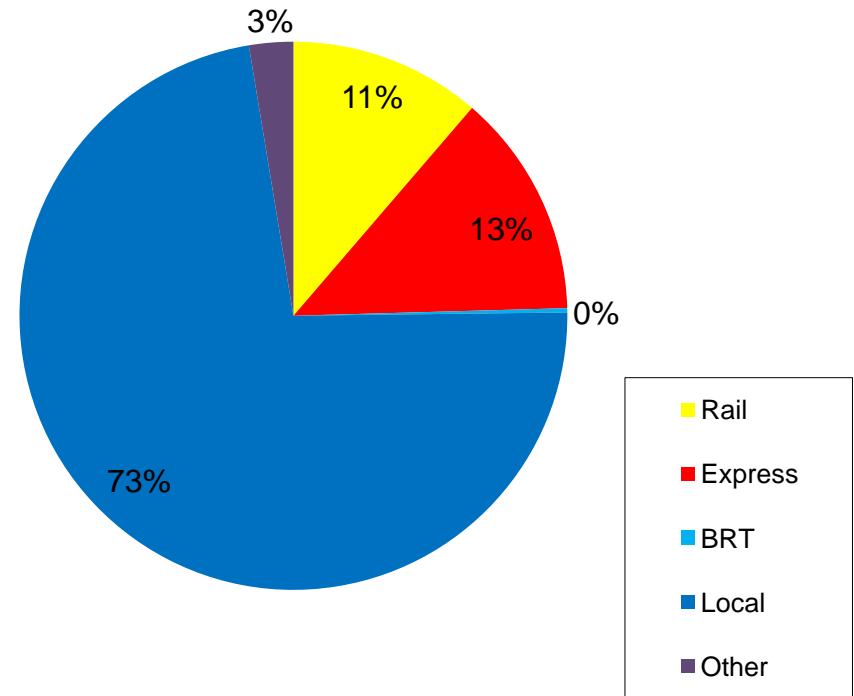
Fourth Quarter 2013 to 2012 Average Weekday Ridership by Provider

| <u>Provider</u> | <u>Average Weekday Rides</u> | <u>% Change</u> |
|--------------------|------------------------------|-----------------|
| Metro Transit | 267,404* | -0.3% |
| MTS - Contracted | 21,664 | 6.7% |
| Suburban Providers | 20,013 | 2.1% |
| University of MN | 16,314 | -5.4% |
| | ----- | ----- |
| Total | 325,395 | 0.0% |

* Excludes Maple Grove contracted rides

Fourth Quarter 2013 by Service Type

- ❖ Rail – 2.7 M
- ❖ Express Bus – 3.2 M
- ❖ METRO Red Line – 59,859
- ❖ Local Bus – 17.4 M
- ❖ Other* – .62 M
- ❖ Total – 24.0 M



* Dial-a-Ride, Metro Mobility, Vanpool

Fourth Quarter 2013 to 2012 Comparison by Service Type

| <u>Type of Service</u> | <u>% Change</u> |
|------------------------|-----------------|
| Rail | -4.1% |
| Express Bus | 2.4% |
| Local Bus | -0.3% |
| Dial-a-Ride | 13.0% |
| Metro Vanpool | 1.5% |
| Metro Mobility | <u>6.8%</u> |
| Total | 0.0% |

Annual 2013 to 2012 Comparison by Provider

| <u>Provider</u> | <u>Rides</u> | <u>% Change</u> |
|--------------------|--------------|-----------------|
| Metro Transit | 80.6 M* | 0.4% |
| MTS - Contracted | 5.6 M | 6.4% |
| Suburban Providers | 5.2 M | 0.9% |
| University of MN | 2.9M | -8.8% |
| | ----- | ----- |
| Total | 94.3 M | 0.4% |

* Excludes 795,157 Maple Grove contracted rides

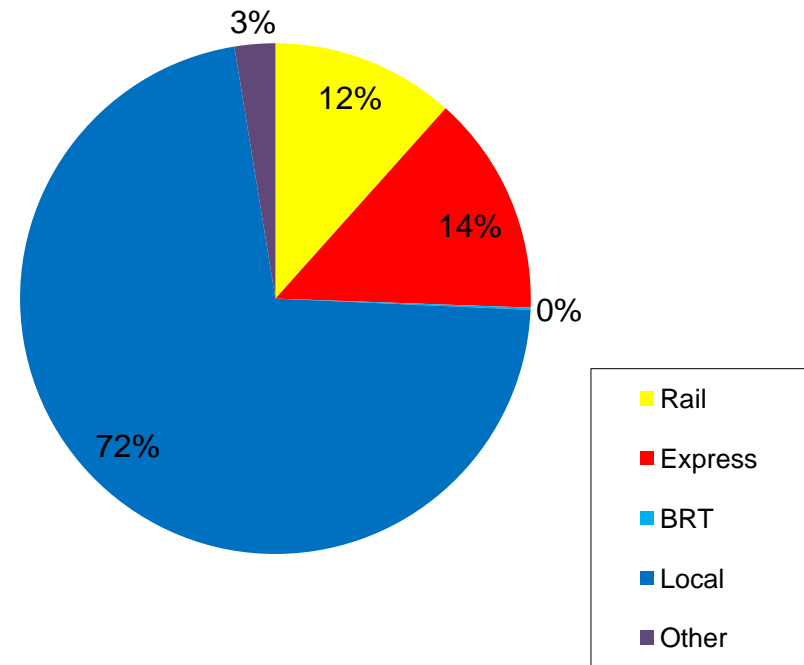
Annual 2013 to 2012 Average Weekday Ridership by Provider

| <u>Provider</u> | <u>Average Weekday Rides</u> | <u>% Change</u> |
|--------------------|------------------------------|-----------------|
| Metro Transit | 263,513* | 0.9% |
| MTS - Contracted | 20,594 | 5.0% |
| Suburban Providers | 20,135 | 0.7% |
| University of MN | 11,737 | -8.6% |
| | ----- | ----- |
| Total | 315,204 | 0.8% |

* Excludes Maple Grove contracted rides

2013 by Service Type

- ❖ Rail – 11.0 M
- ❖ Express Bus – 13.2 M
- ❖ METRO Red Line – 130,734
- ❖ Local Bus – 67.6 M
- ❖ Other* – 2.4 M
- ❖ Total – 94.3 M

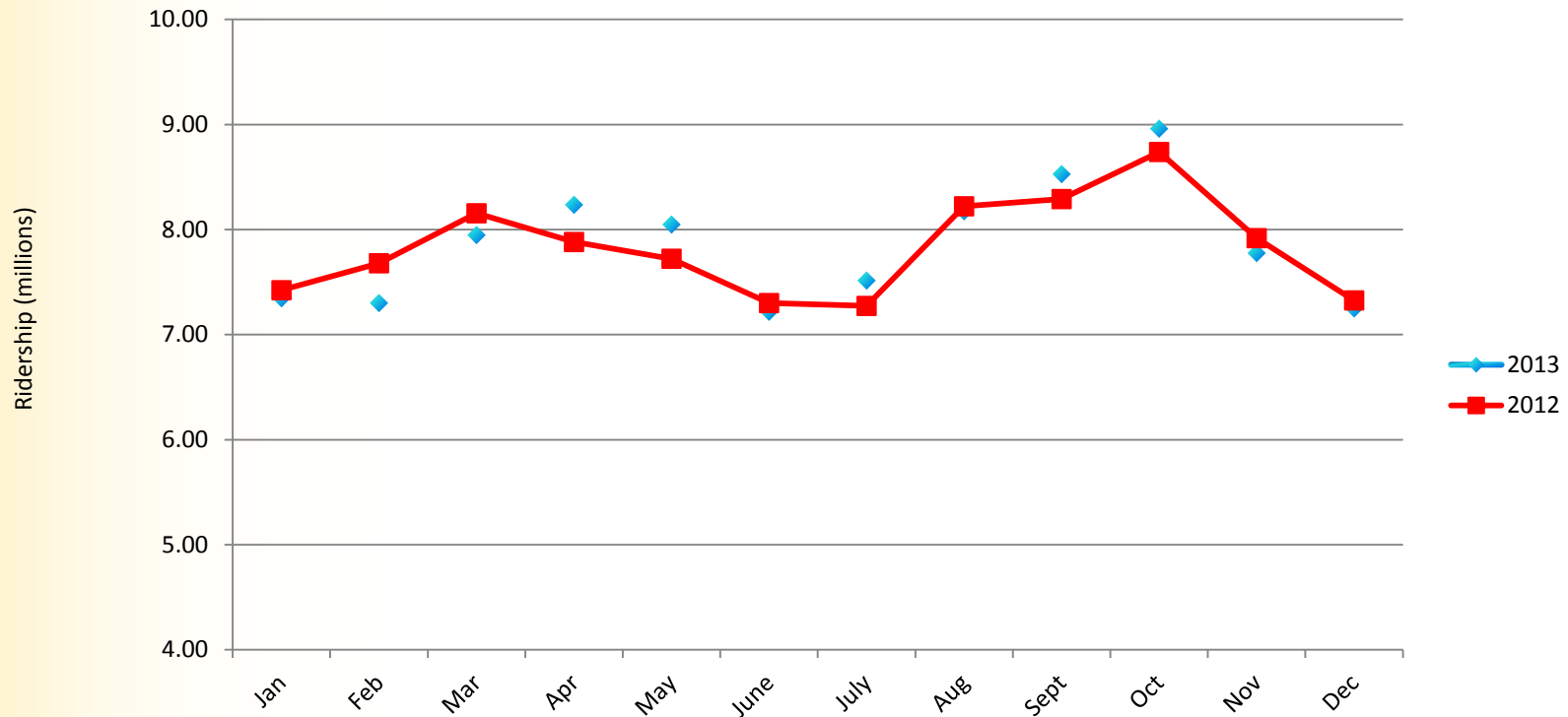


* Dial-a-Ride, Metro Mobility, Vanpool

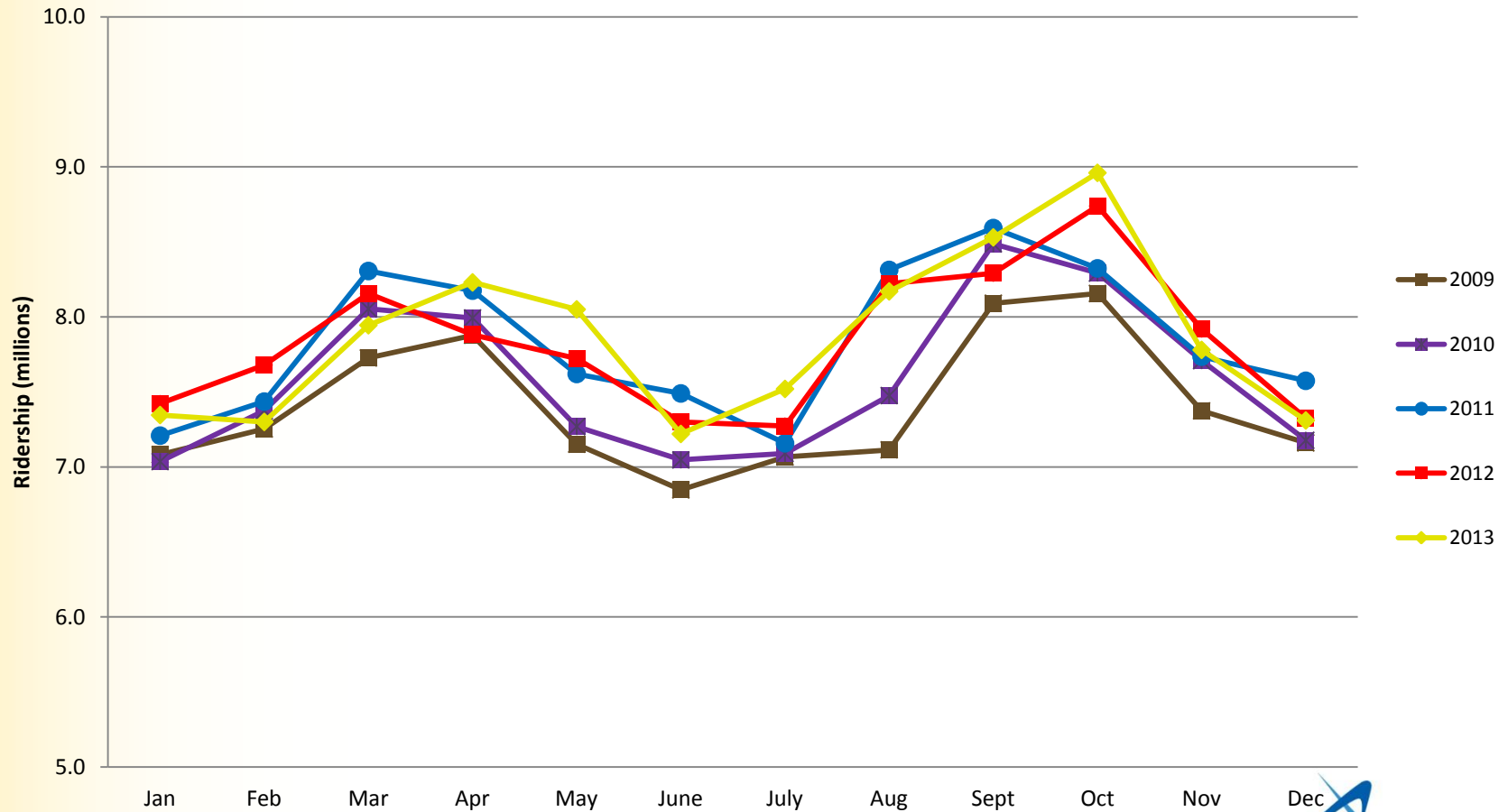
Annual 2013 to 2012 Comparison by Service Type

| <u>Type of Service</u> | <u>% Change</u> |
|------------------------|-----------------|
| Rail | -2.2% |
| Express Bus | 1.0% |
| Local Bus | 0.3% |
| Dial-a-Ride | 7.1% |
| Vanpool | 4.1% |
| Metro Mobility | <u>5.1%</u> |
| Total | 0.4% |

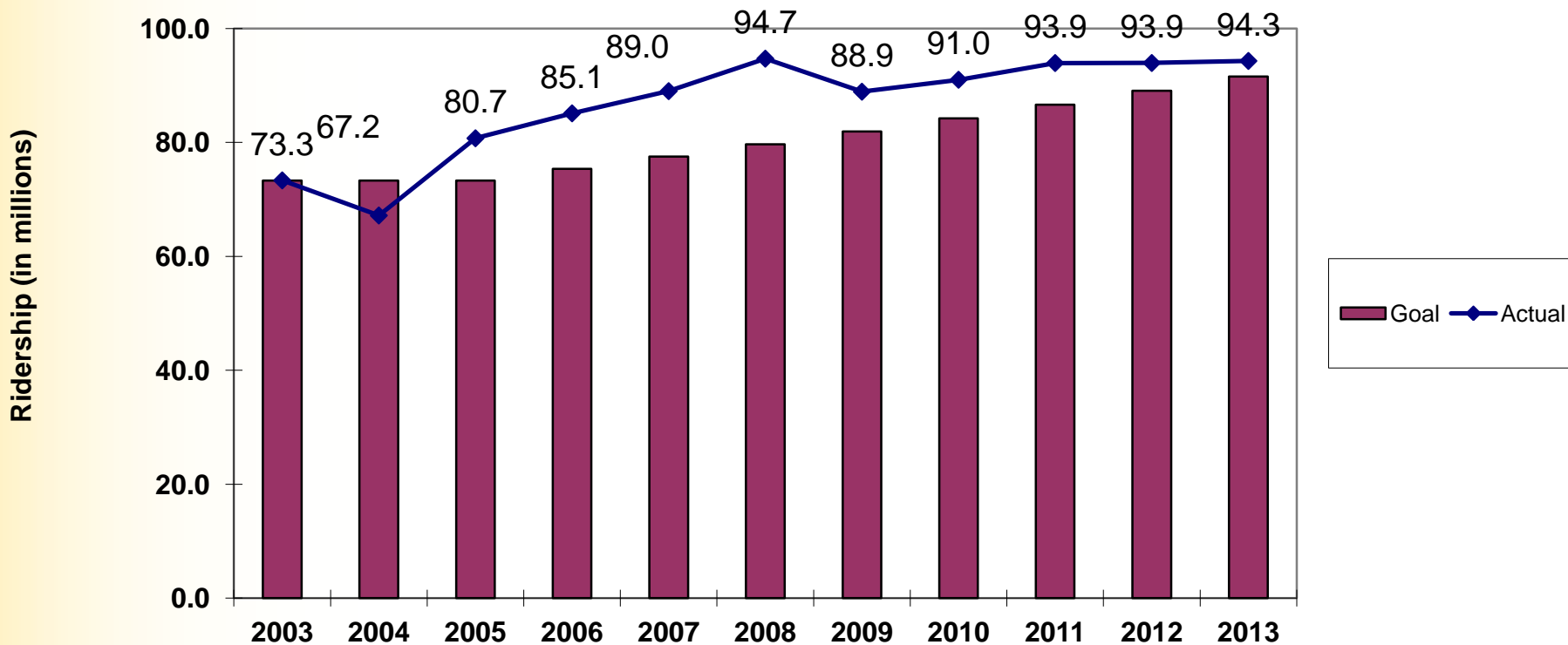
2013 - 2012 Monthly Comparison



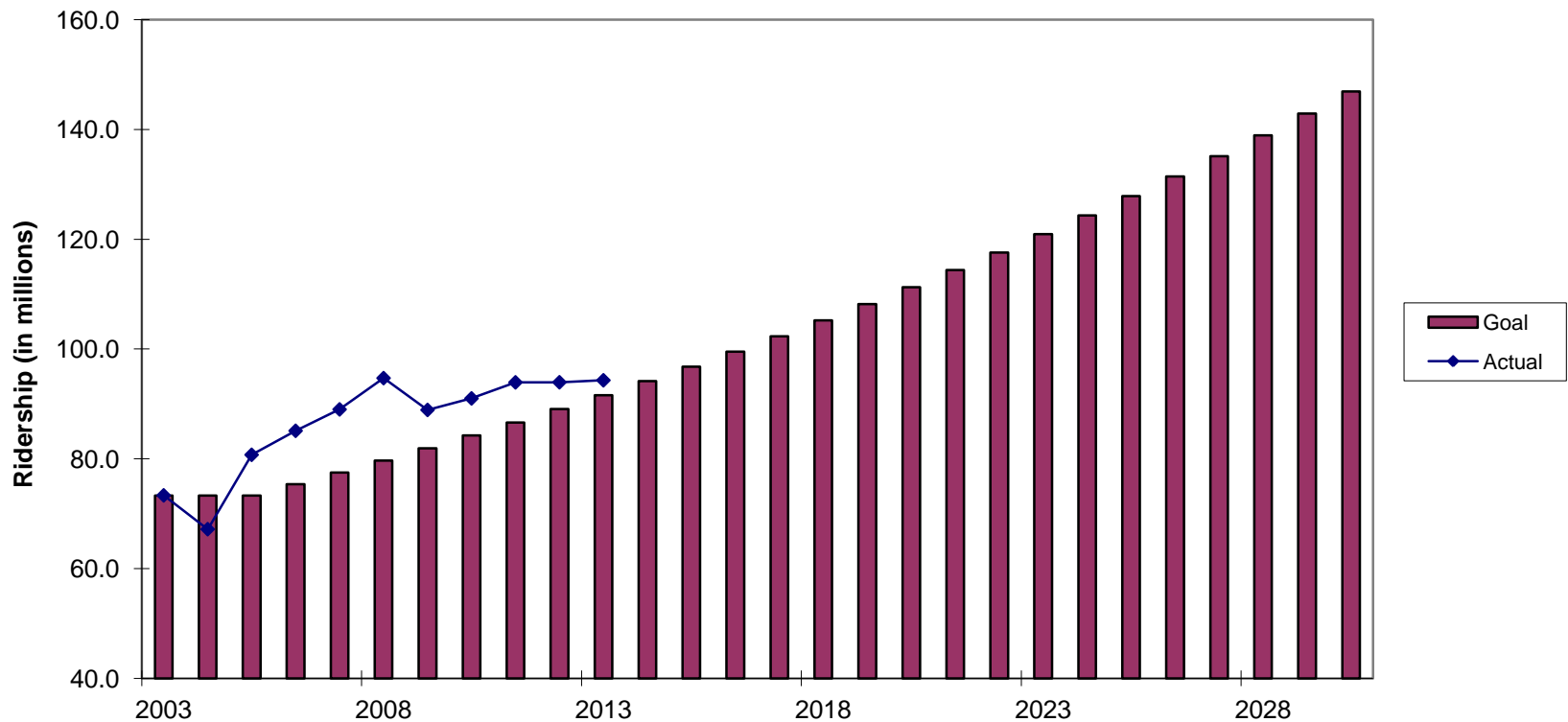
2013-2009 Monthly Comparison



Toward 2030 Ridership Goal



2030 Regional Ridership Goal



2013 Year End Regional Ridership Report

Questions