

Highway 610 & Noble Parkway Park and Ride



Transportation Committee

June 9, 2014

James Harwood

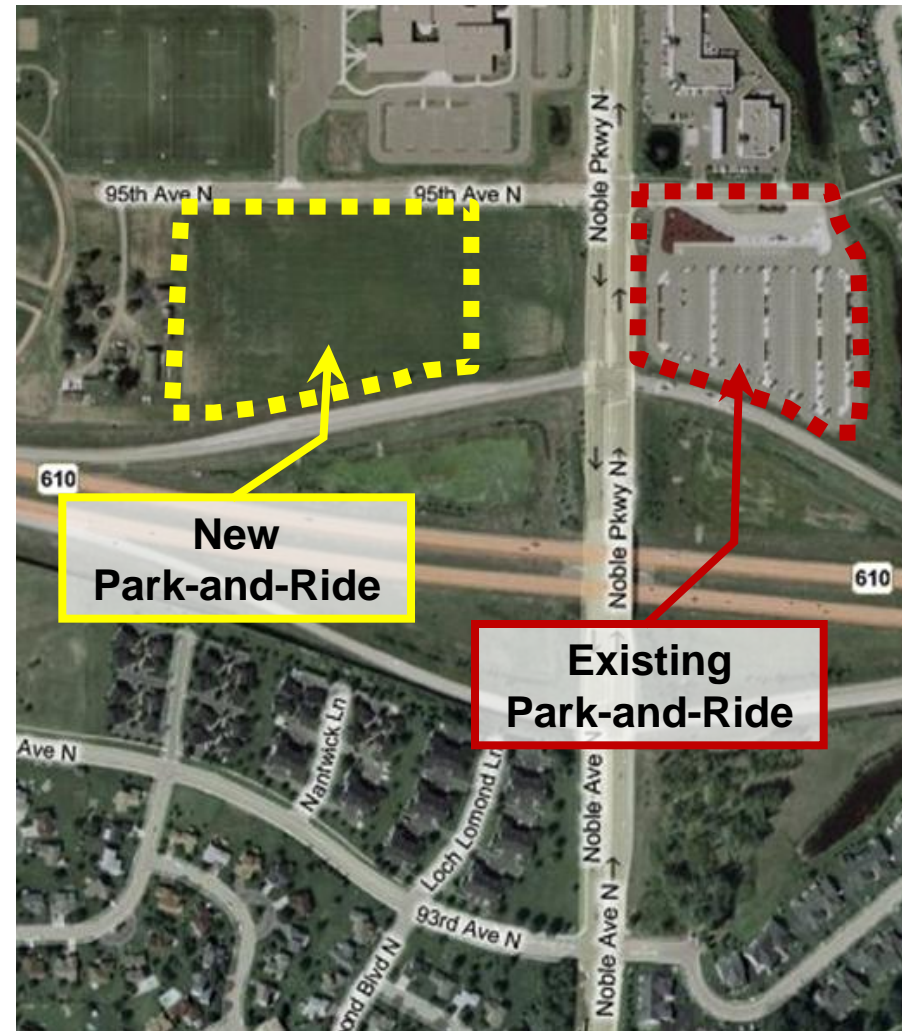
Engineering & Facilities

Existing Park-and-Ride

- Opened in 2000
- 511 vehicle capacity surface lot
- 90%+ utilization since 2006

New Park-and-Ride

- 9.2 acres acquired in 2011
- 1009 vehicle capacity
 - Surface - 486
 - Structure - 523
- Park and Ride opening August 23, 2014 coinciding with operator pick.



Construction Status

- Construction started in July 2013
- Substantial Completion Date – July 3
- Final Completion Date – July 18
- Will meet 22.6% DBE commitment



Construction Status

- Final ramp concrete deck pour in March 2014
- Architectural Precast Façade fully installed
- Surface lot to be complete by June 13



- Vertical Circulation towers nearing completion including:
 - LED lighting
 - Geothermal Heating systems for in-floor heating

Solar Photovoltaic Energy Production

- 40kW System offsets 25% of facility power useage
- System cost - \$280,000
 - Xcel Rebate 60% (anticipated \$168,000)
- Comparable precast panel cost - \$160,000



Budget:

- **Project Budget** **\$14.67M**
 - **Land Acquisition** **\$2.87M**
 - **Design** **\$900K**
 - **Construction** **\$10.5M**
 - **PM/CM** **\$400K**

Service Restructuring

- **Park and Ride opening August 23, 2014**
- **Route 766 split into two routes**
 - **Route 766**
 - **Route 768 – express to DT Minneapolis**



Questions?