



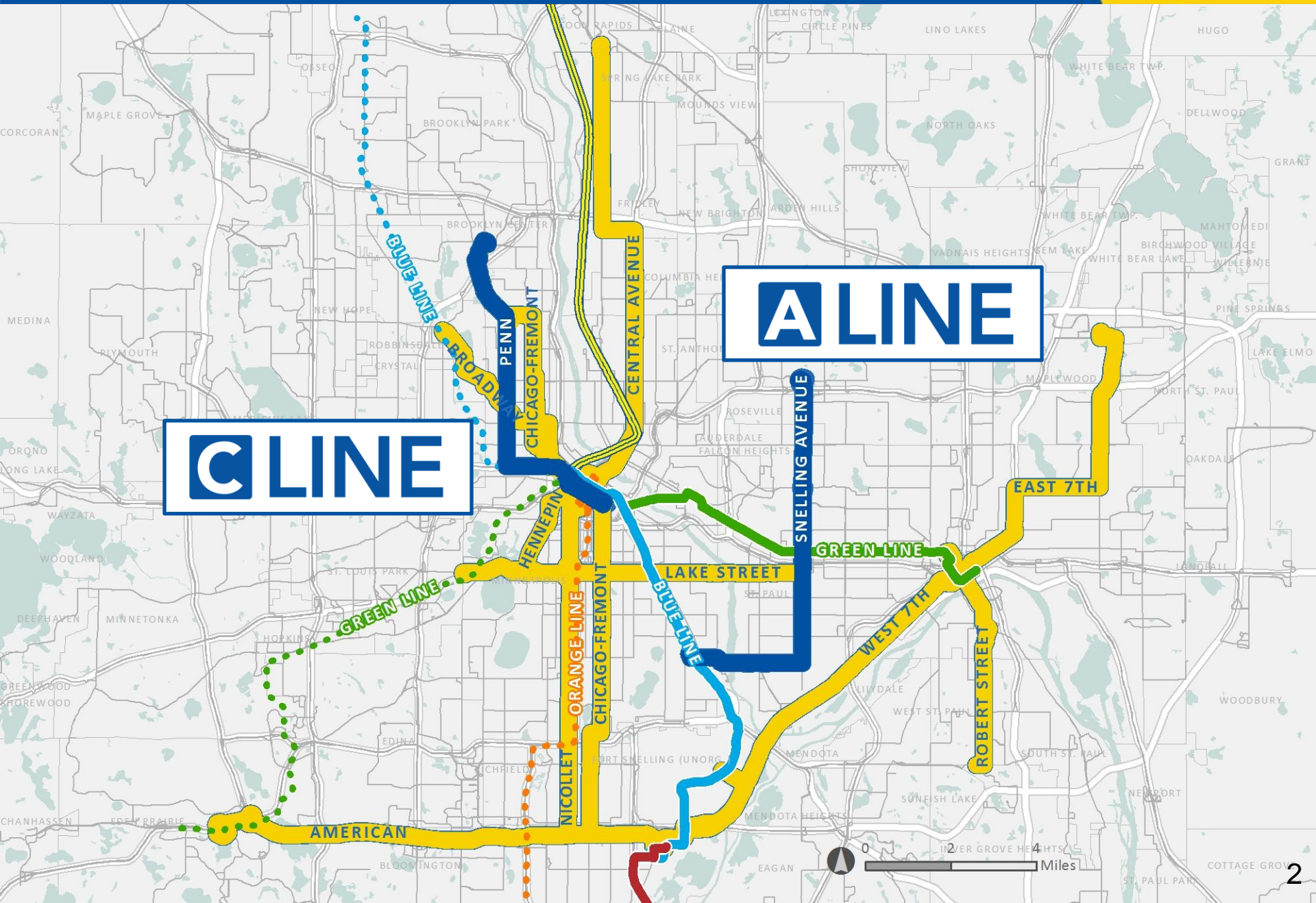
Arterial BRT Update



November 10, 2014

**Katie Roth, Project Manager, BRT/Small Starts
612-349-7772**

**Charles Carlson, Senior Manager, BRT/Small Starts
612-349-7639**



A LINE

C LINE

AMERICAN

GREEN LINE

GREEN LINE

LAKE STREET

EAST 7TH

WEST 7TH

ROBERT STREET

PENN

ORANGE LINE

CENTRAL AVENUE

SNELLING AVENUE

CHICAGO-FREMONT

CHICAGO-FREMONT

HENNEPIN

CHICAGO-FREMONT

NICOLLET

BLUE LINE

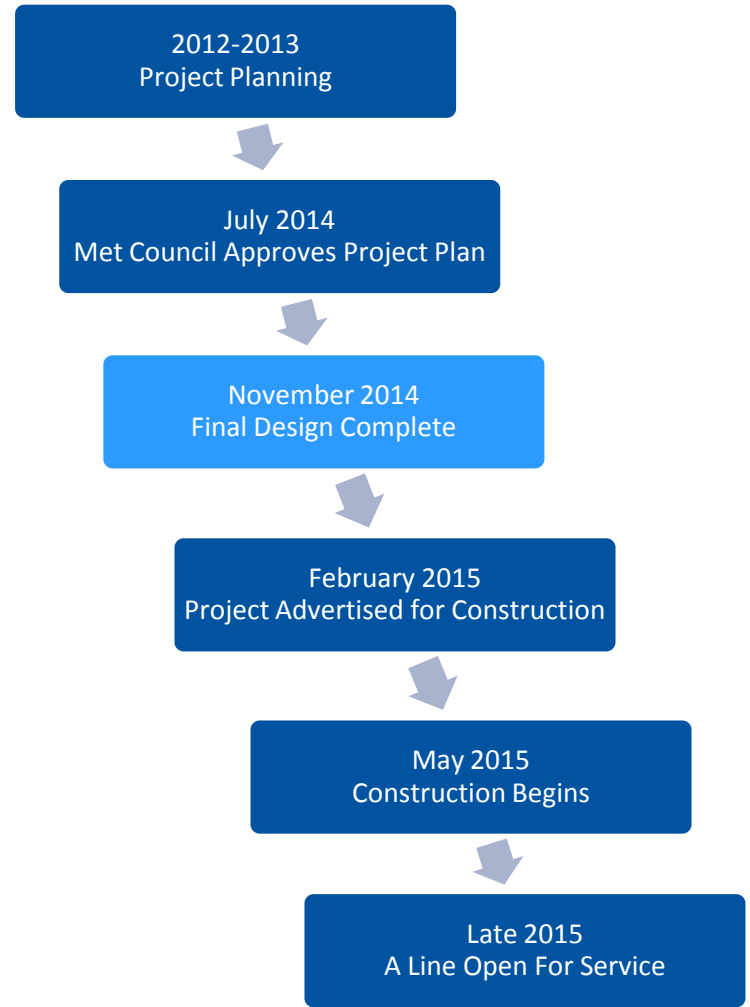
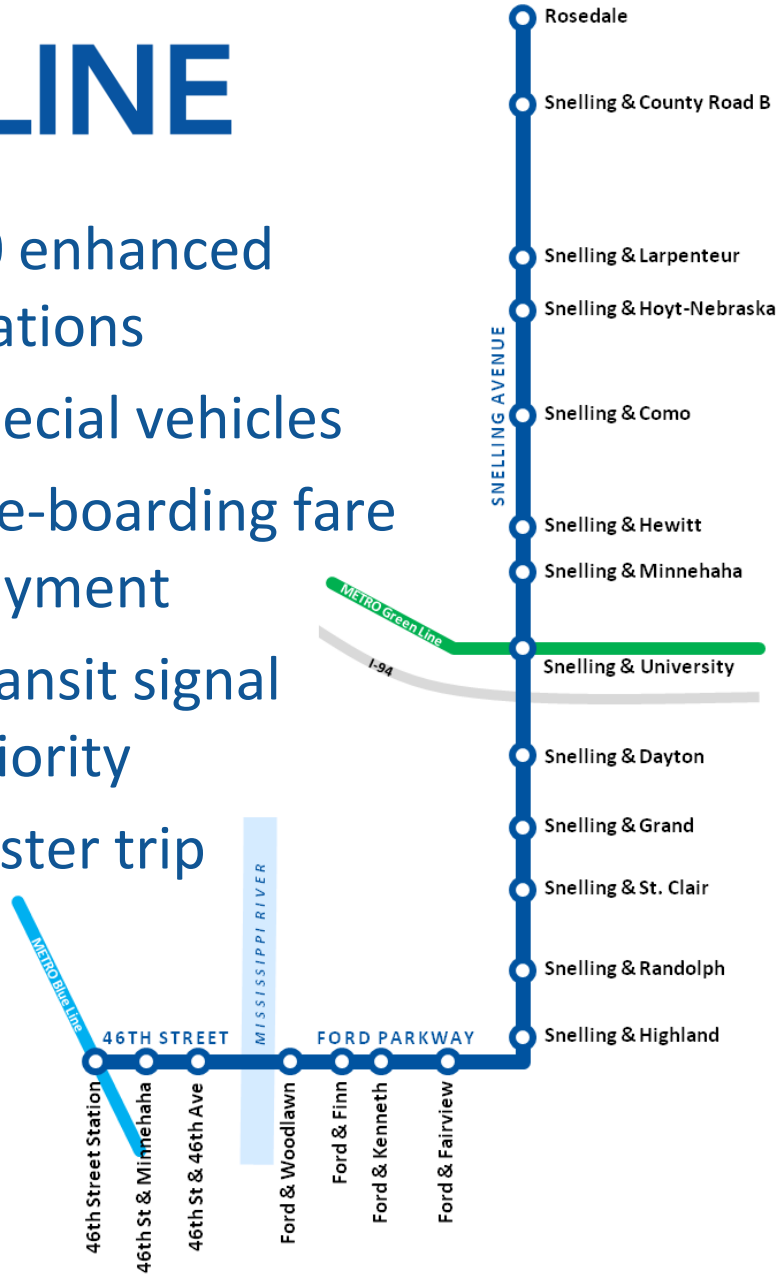
BROADWAY

BLUE LINE

0 1 2 Miles

A LINE

- 20 enhanced stations
- Special vehicles
- Pre-boarding fare payment
- Transit signal priority
- Faster trip



Shelters are heated,
well-lit and secure



A Line Animation

DRAFT Expected Construction Phasing

ALINE

- Phase 1: All work north of MnDOT project area + pilot station
- Phase 2: First half of remaining stations
- Phase 3: Second half of remaining stations

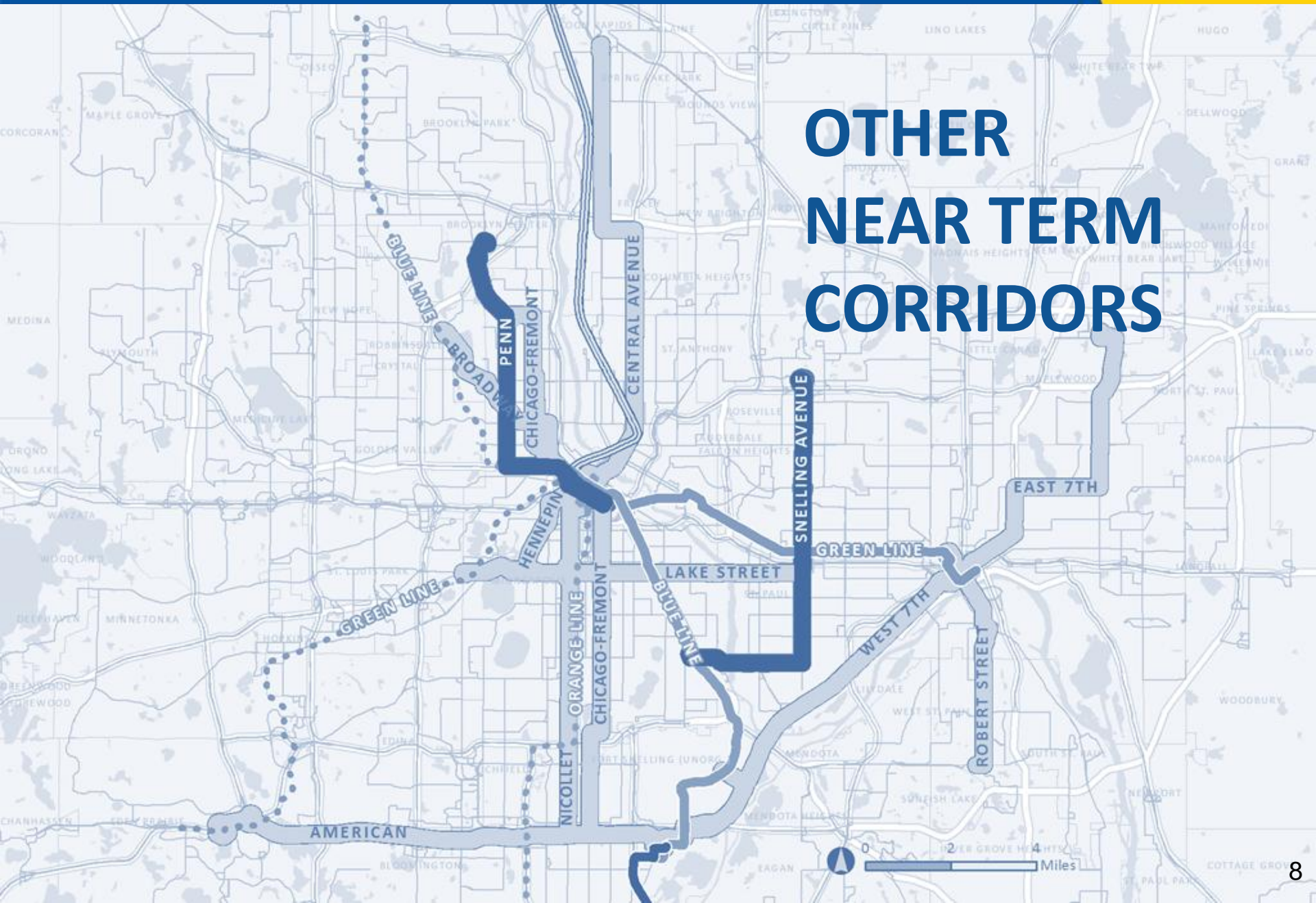


Other Steps Underway

ALINE

- Shelter/Pylon final design & production
 - Evaluating proposals
 - Expected request for action before end of 2014
- Agreements with cities, counties, MnDOT
- BRT vehicle purchase
- Pre-construction community outreach

OTHER NEAR TERM CORRIDORS



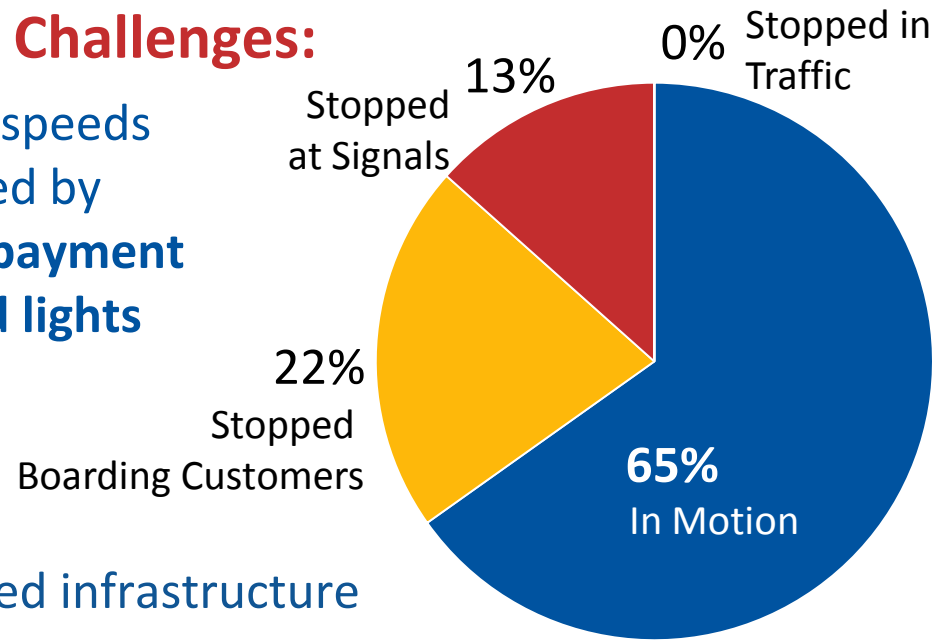
Penn Avenue Transit Today

Route 19:

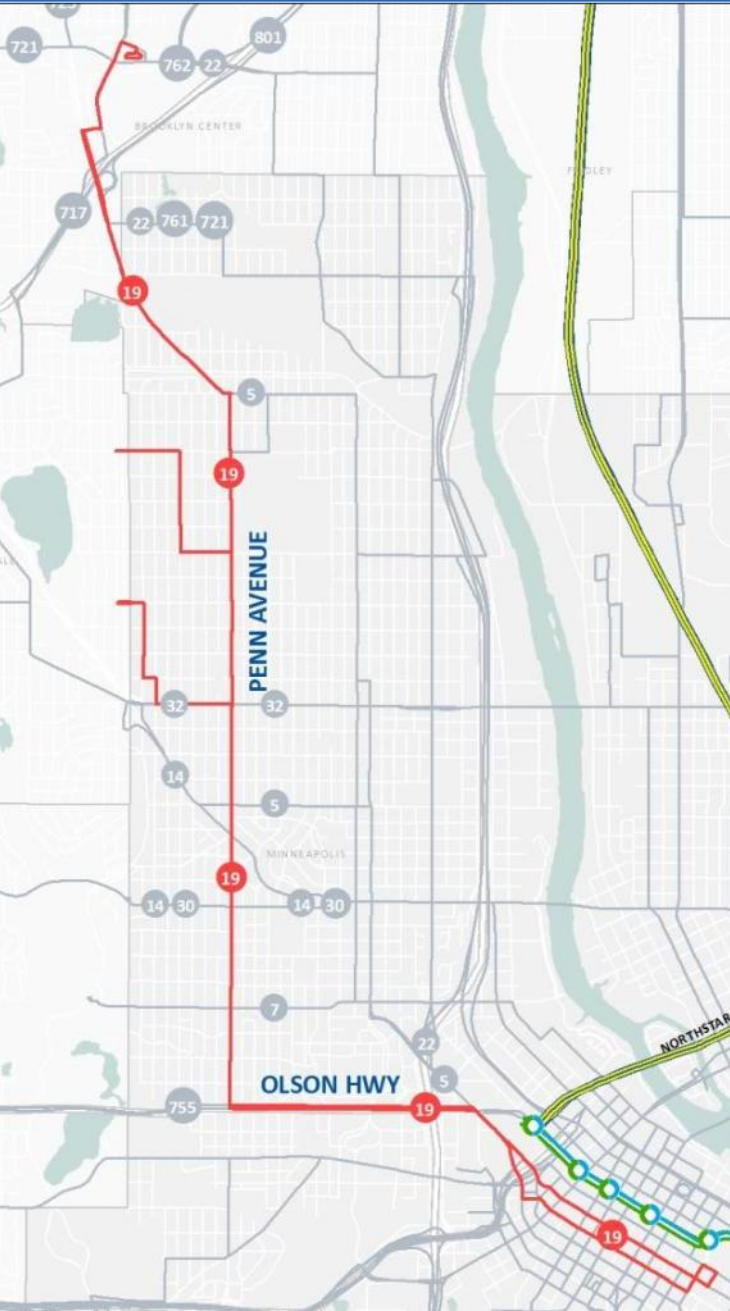
- **7,600** Weekday Rides
- **7th** Highest in Metro Transit System
- **5,000** Saturday Rides
- Carries **1 in 4** people traveling on Penn

Major Challenges:

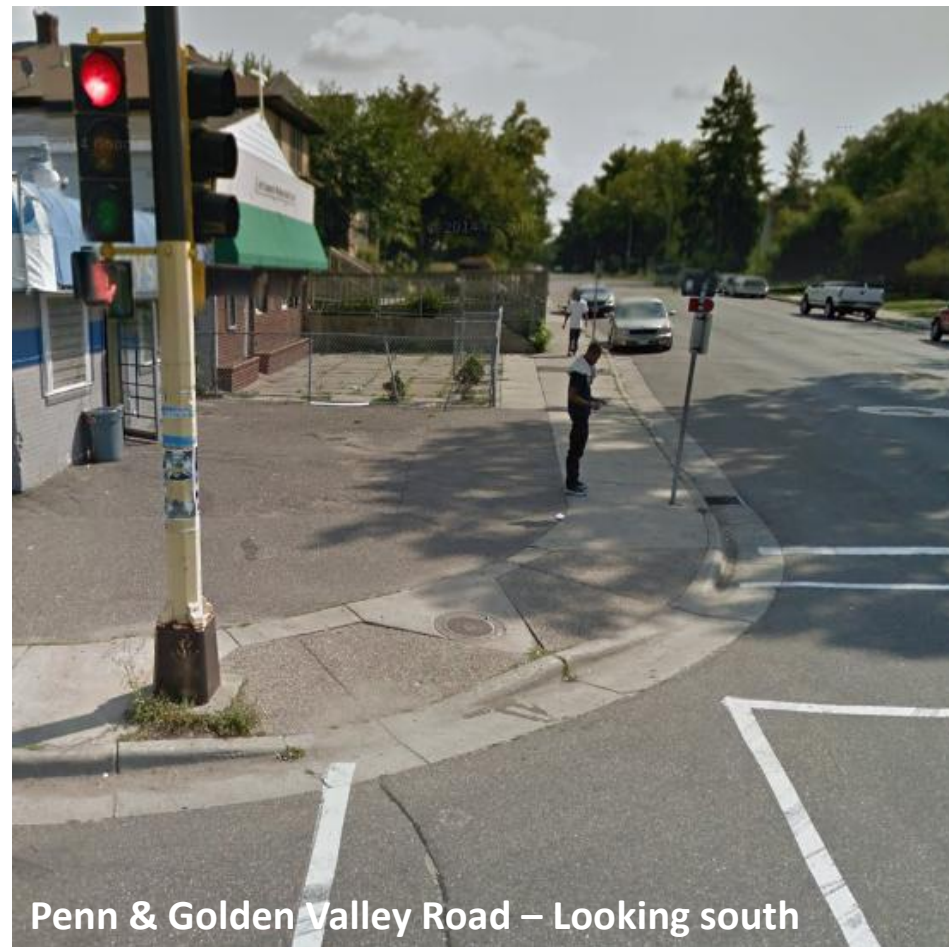
- Slow speeds caused by fare payment & red lights
- Limited infrastructure for customers



7th & Olson to BCTC
Weekday PM Peak



Site Constraints Limit Improvements



Penn & Golden Valley Road – Looking south



Penn & Golden Valley Road – Looking north

200+ customers per day board at this location
Narrow sidewalks do not allow bus shelter installation



C LINE Bus Rapid Transit

- Advancing toward 2016 construction and opening
- Planning coordinated with Penn Avenue Community Works (2013-early 2015)
- Fall 2014 engagement work seeks feedback on concept station locations

C LINE

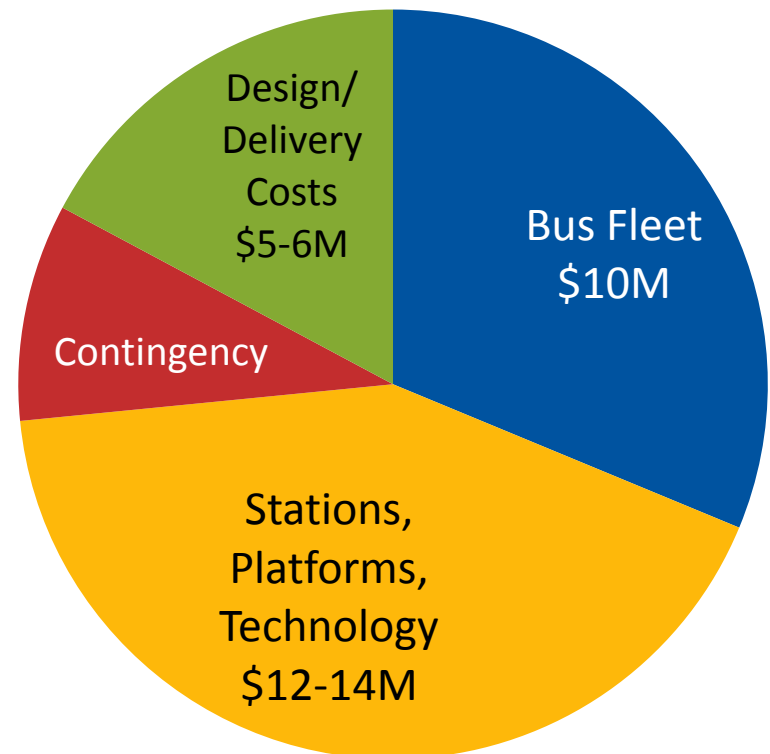
- Fall-Winter 2014: Input on Concept Plan
 - Penn Avenue Community Works Open Houses
 - Nov. 8, 10-noon, Folwell Park
 - Nov. 13, 6-8pm, Harrison Rec Center
 - Nov. 19, 1-3pm, North Regional Library
 - Blue Line Extension Open House, Nov. 12
 - Neighborhood meetings, station neighbor discussions
- Spring-Winter 2015: Detailed design
- Spring 2016: Construction begins
- Late 2016: C Line open for service

Project Funding

- Metropolitan Council funding C Line design and engineering work in 2015
- Pursuing funding options for project construction
 - Active Regional Solicitation
 - Potential reallocation of past B Line funding awards
 - Included in Draft Service Improvement Plan, legislative funding requests
 - Future competitive funding opportunities (TIGER)

C LINE

**\$32M Preliminary
Project Budget**



Arterial BRT Update



November 10, 2014

**Katie Roth, Project Manager, BRT/Small Starts
612-349-7772**

**Charles Carlson, Senior Manager, BRT/Small Starts
612-349-7639**