

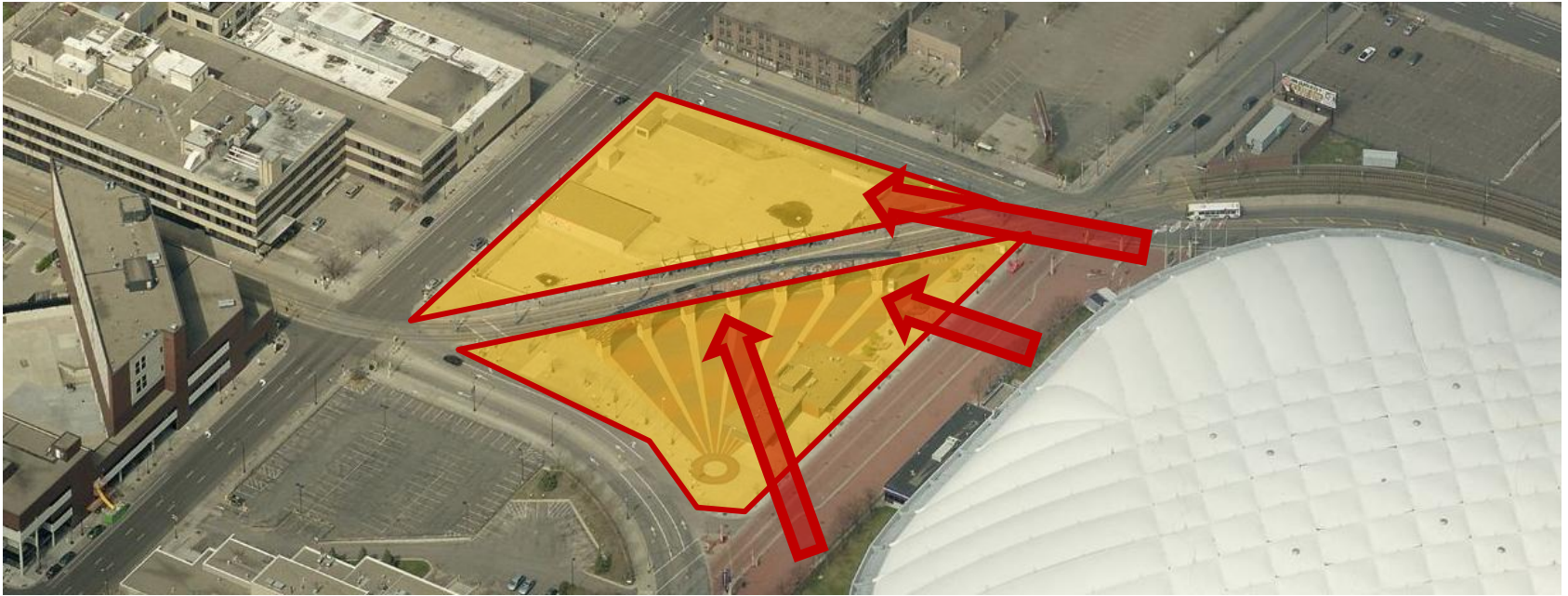


# Downtown East / Stadium Transit Planning

Transportation Committee April 13, 2015



**Jim Harwood, Lead Project Manager**  
Engineering & Facilities



- Pedestrian safety – especially at Chicago Ave & 4th Street
- Queuing capacity
  - 40% transit mode split target
  - 26,000+ customers w/ Southwest & Bottineau LRT



## Operations and Queuing

- Downtown East Ramp block required for queuing post event to accommodate projected ridership
- Northwest corner of the block to be developed by MSFA as open plaza for LRT operations and non event day functions
- Southeast corner of block may undergo minimal renovations to improve LRT queuing operation and platform access



## LRT Operations

- Regular Revenue Service = 5 minute combined headways
  - A train will pass through the intersections of 4th and Chicago Avenue and 5th Street and Park Avenue every 2.5 minutes on average
- Game Day “special” trains
  - Increased frequency = train passing intersection every 2 minutes on average

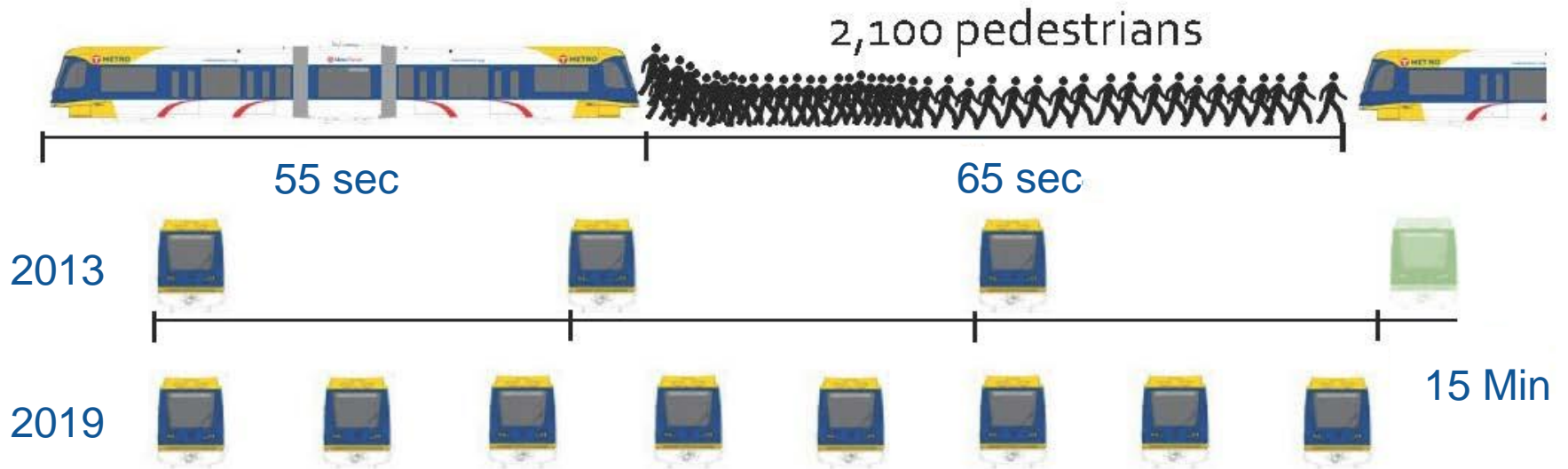
# Pedestrian LRT Crossing



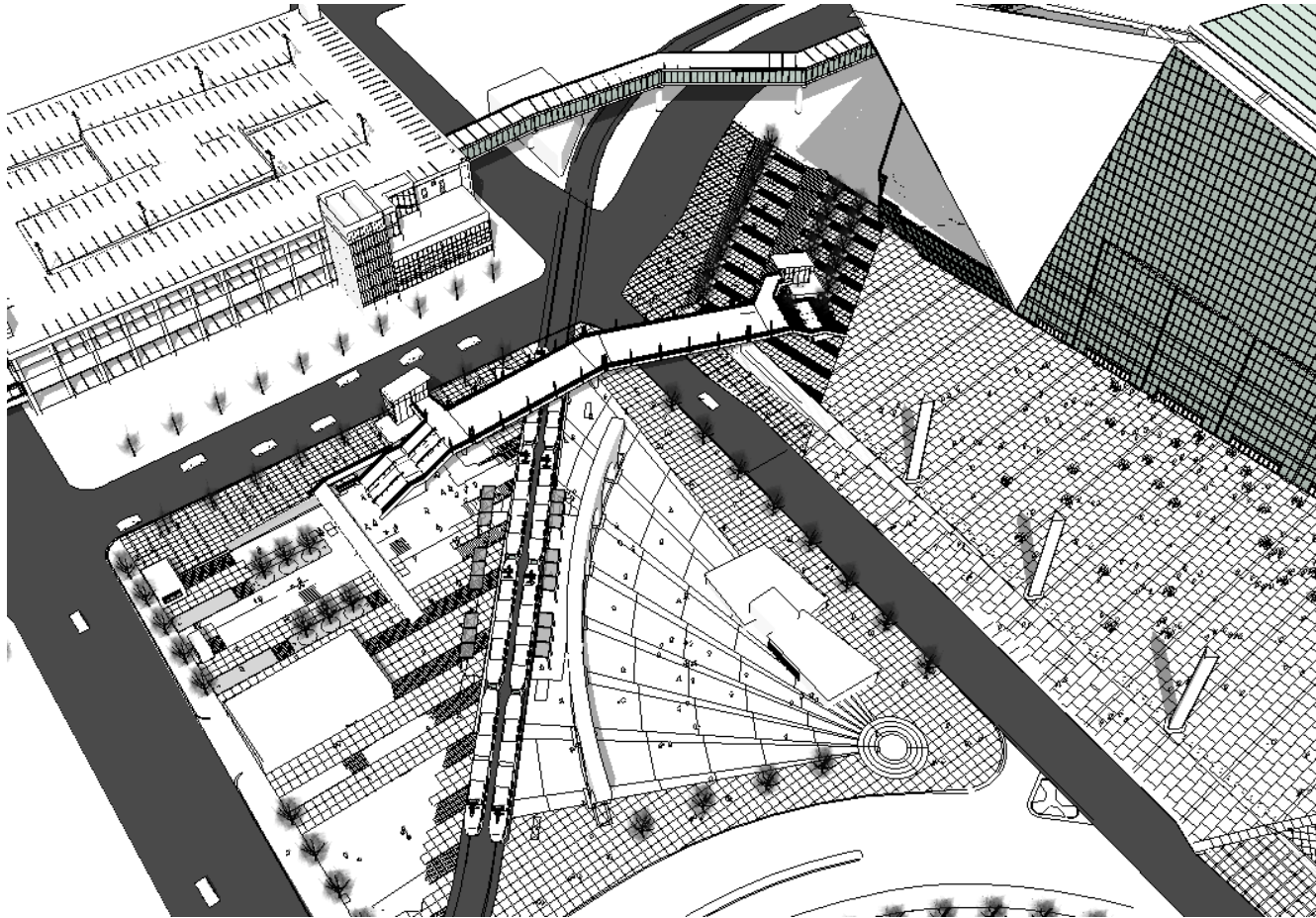
12 trains per hour per direction

+5 special event trains

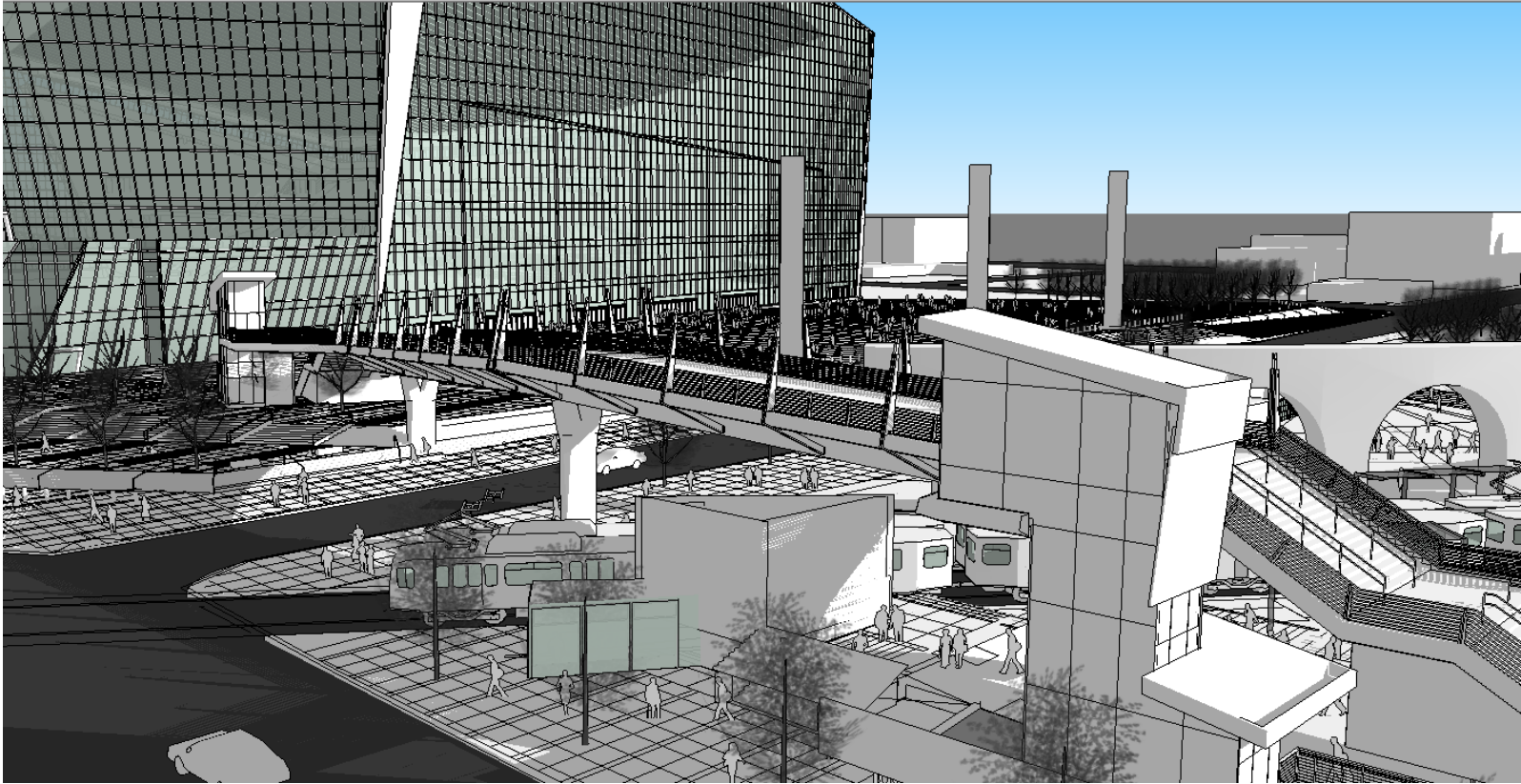
=Average 120 seconds headway (two-way)



# Pedestrian Bridge Design



- Issued contract to EVS to commence design in January of 2015
- Currently at 50% design level
- Design to include:
  - Wood, steel, and concrete finishes
  - Elevators for ADA access
  - Snow melt system for ease of maintenance



- April – Council Action on Agreement
- May – TAAC committee presentation, finalize and issue documents for bid
- July – Council Action on Construction Contract
- April, 2016 – Construction substantial completion

## CONSTRUCTION AND TRANSIT OPERATIONS AND MAINTENANCE INTERFACE AGREEMENT

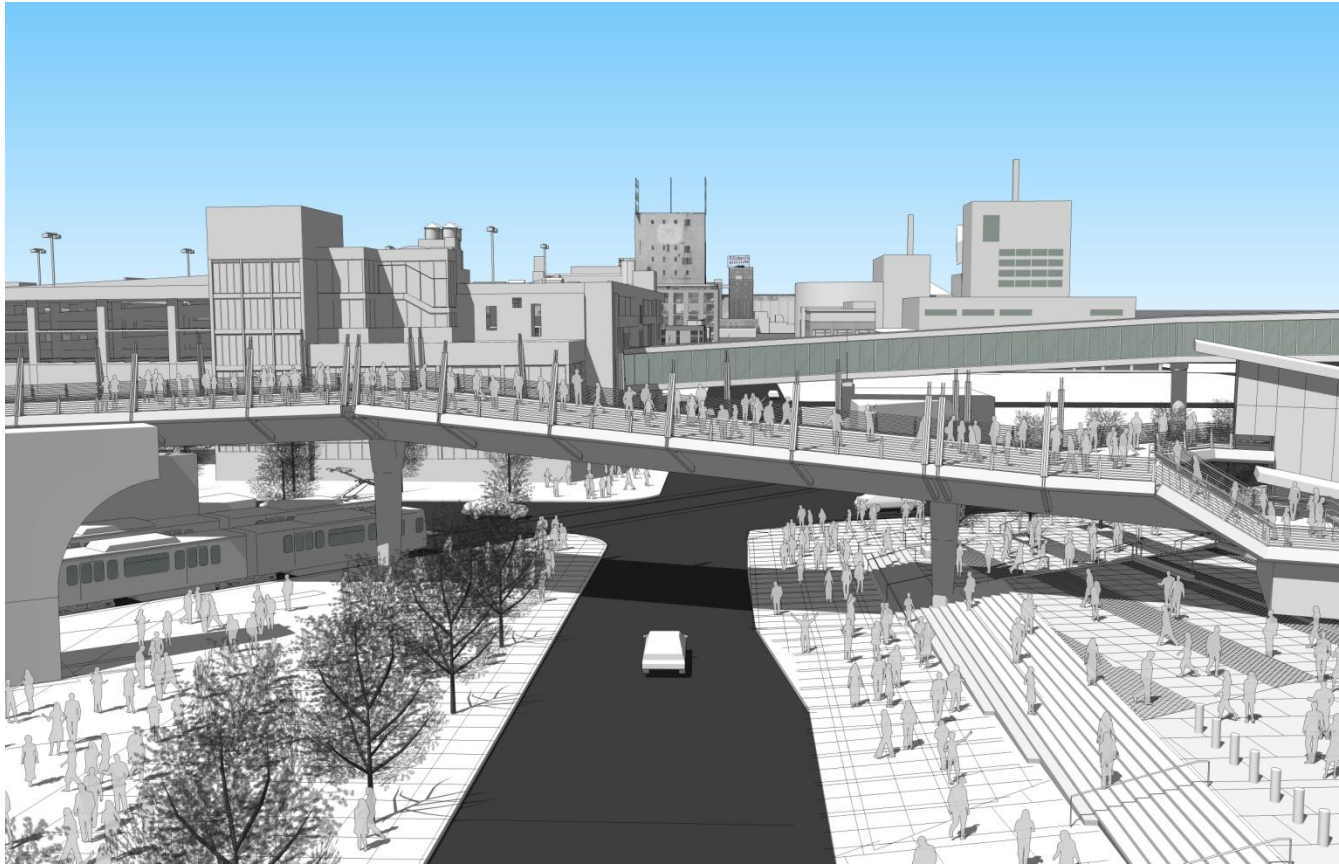
- Provides for use of MSFA property for queuing areas, platform access, and pedestrian bridge to accommodate transit needs.
- Provides for \$300,000 in annual promotional support from Vikings and the MSFA in exchange for LRT station naming rights and certain restrictions on station advertising
  - \$250,000 from Vikings
  - \$50,000 from MSFA
- All construction, operation and maintenance costs of the pedestrian bridge are the responsibility of Met Council.
  - Construction cost estimated at \$5.5M - \$6M



## Business Item 2015-76

### Authorize Regional Administrator to:

- Execute a Construction and Transit Operations and Maintenance Interface Agreement with the Minnesota Sports Facilities Authority and the Minnesota Vikings related to the Downtown East Light Rail Station and proposed pedestrian bridge.



Questions?