

Metro Transit Electronics Repair Department



Areas of Responsibility :

Bus Systems

- On-board Communications
 - Voice Radios, Data Radios
 - Automatic Vehicle Location (AVL)
 - Automatic Passenger Counters (APC)
 - Public Address/Annunciator Systems
 - Onboard Mobile Gateway (OMG) - NEW
- Electronic Destination Signs
- Bus Camera/DVR System
- One Line Signs (stop request, time/date)
- Transit Signal Priority (TSP)



Areas of Responsibility :

Light Rail Vehicles

MTPD Vehicles

Non-Revenue

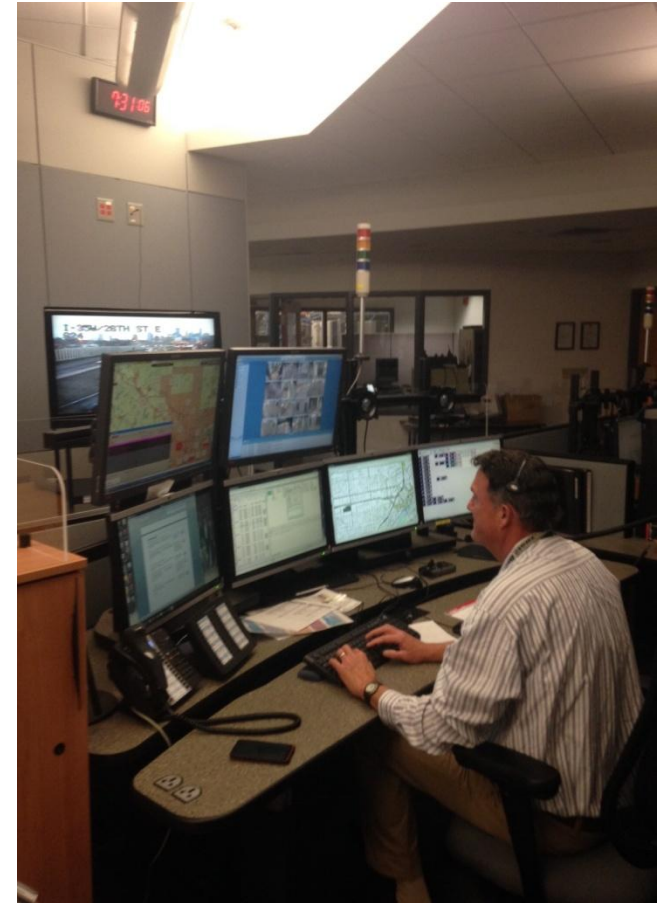
- Voice Radios
- Data Radios
- Safety Lighting (Light bars, Strobes)
- Sirens, Public Address
- AVL
- OMG



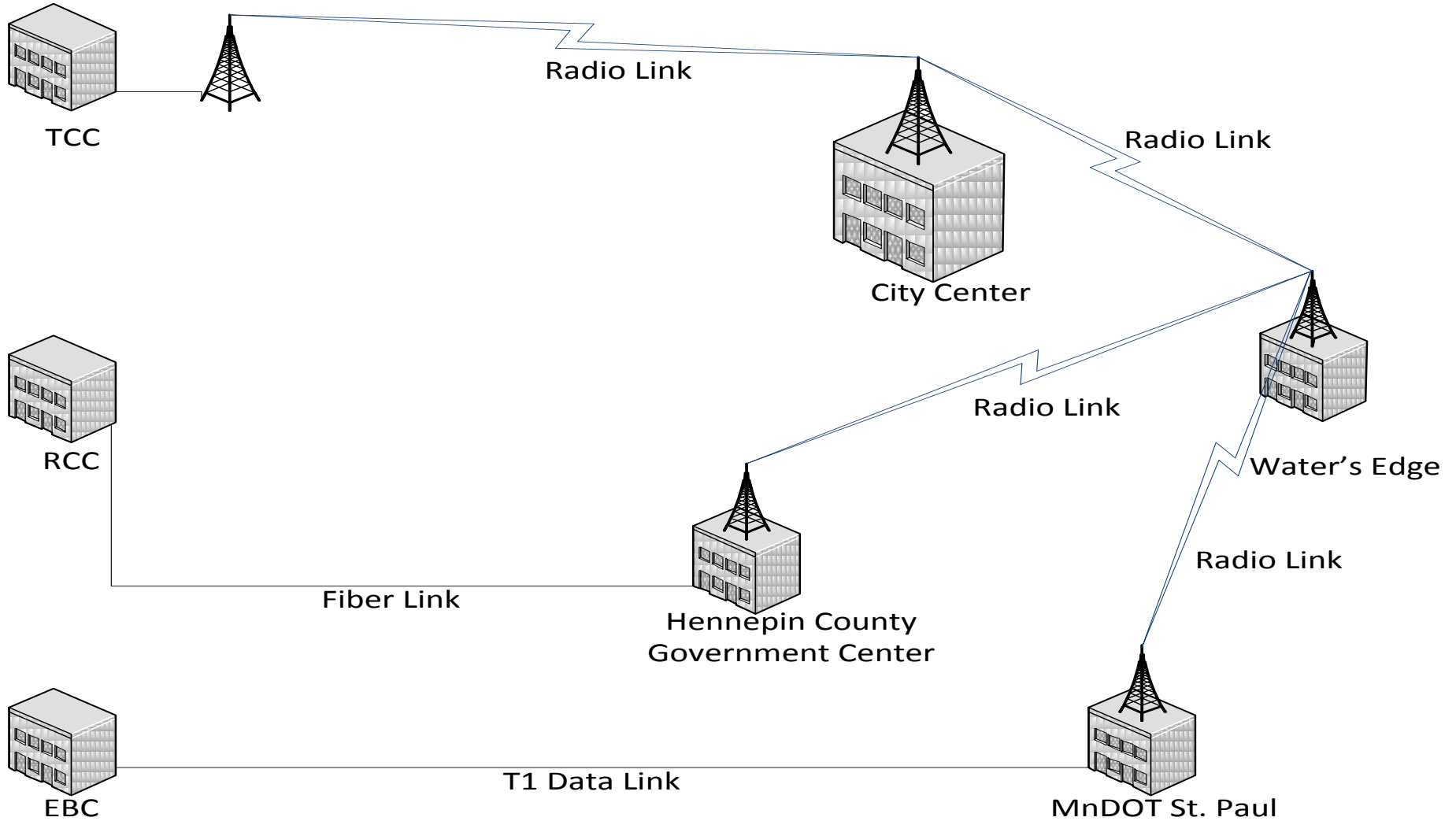
Areas of Responsibility

Radio Communications

- Control Center Console Maintenance – Transit Control Center (TCC-14), Rail Control Center (RCC-6), and Emergency Backup Center (EBC-6)
- Microwave System
- All Metropolitan Council Portable Radios
- Metro Mobility Mobile Radio Programming

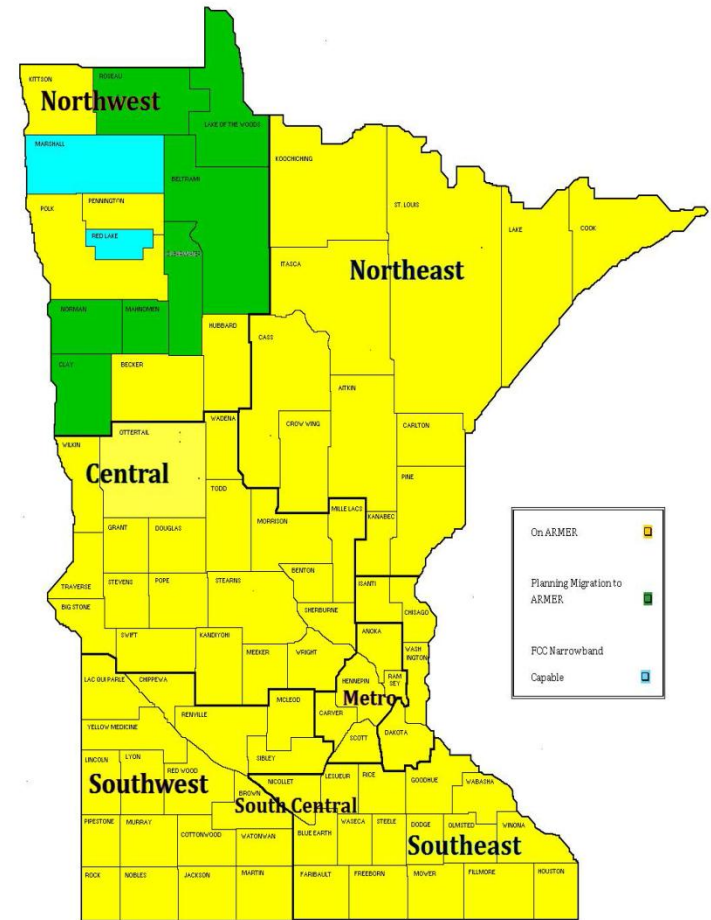


Metro Transit ARMER Console Communication Links



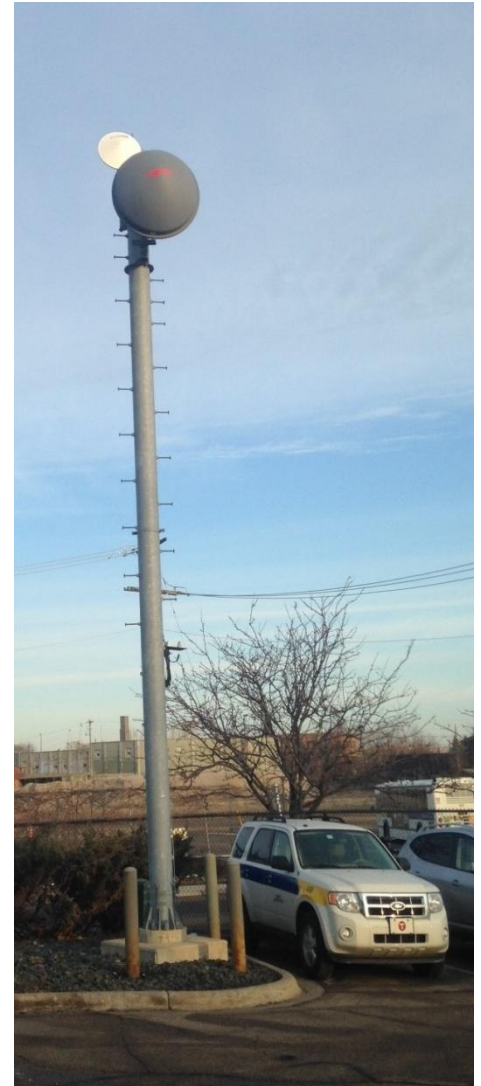
Met Council Voice Communications

- Operates on the Allied Radio Matrix for Emergency Response (ARMER) system.
- ARMER is a shared statewide radio system
- The Met Council has approximately 2,800 radios on the ARMER system

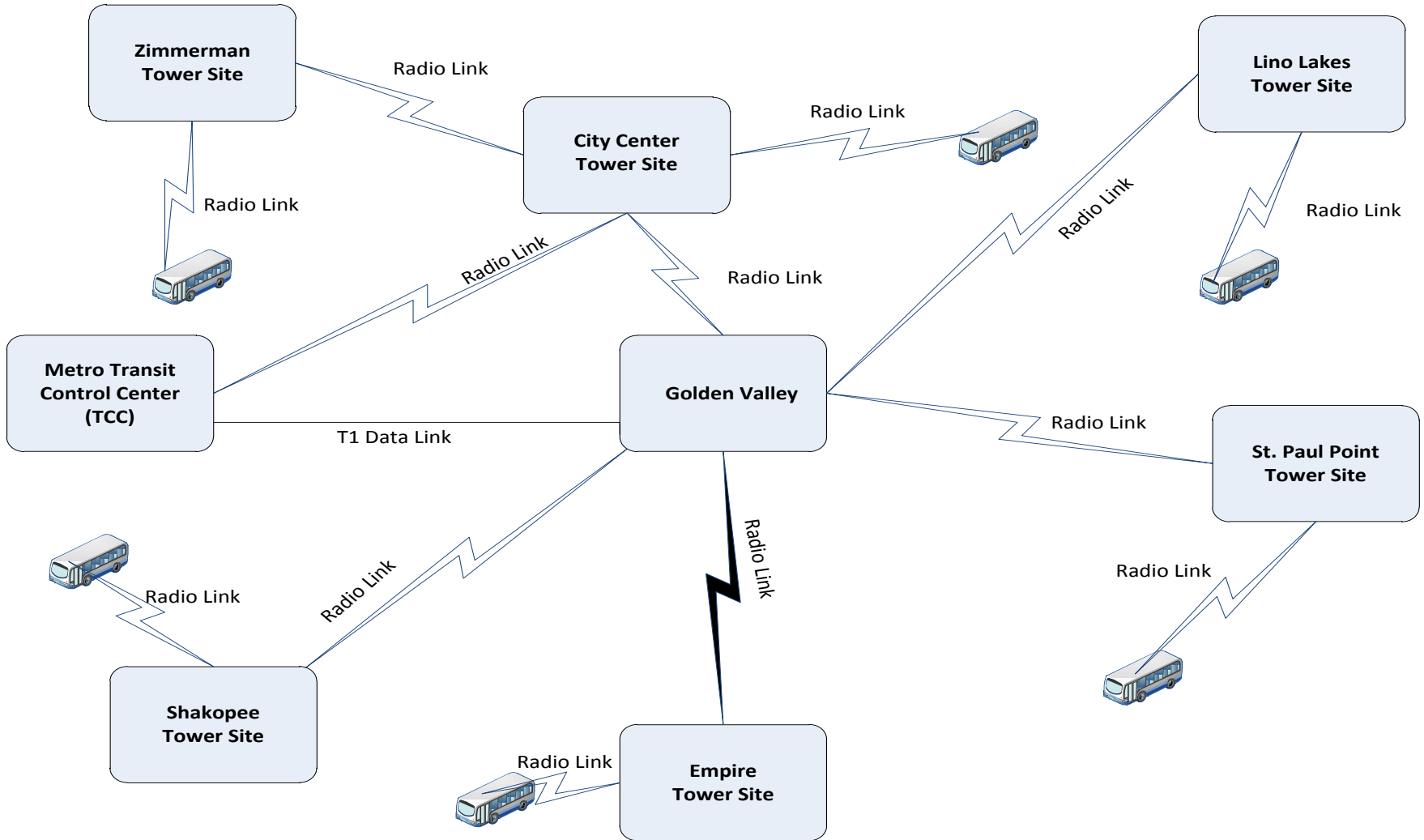


Met Council Data Communications

- Leased space on six tower sites for Metro Transit Data radio system
- Serves all Metro Transit buses, Transit Supervisors, Maintenance vehicles, MTS, Red Line, Southwest Transit, Plymouth Metrolink
- Gives GPS location, controls voice communication, request to talk, silent alarm, sends automatic passenger count data



Metro Transit Data Network





Questions?

Thank You

Chad LeVasseur