

2014 Year End Regional Ridership Report

Transportation Committee
February 9, 2015

Annual 2014 to 2013 Comparison by Provider

<u>Provider</u>	<u>Rides</u>	<u>% Change</u>
Metro Transit	83.7 M*	3.9%
MTS - Contracted	5.5 M	-2.6%
Suburban Providers	5.2 M	-0.3%
University of MN	3.2 M	9.9%
	-----	-----
Total	97.6 M	3.5%

* Excludes 788,097 Maple Grove contracted rides

Annual 2014 to 2013 Average Weekday Ridership by Provider

<u>Provider</u>	<u>Average Weekday Rides</u>	<u>% Change</u>
Metro Transit	269,907*	2.4%
MTS - Contracted	19,576	-3.3%
Suburban Providers	19,721	0.2%
University of MN	12,473	9.0%
	-----	-----
Total	321,677	2.2%

*Excludes Maple Grove contracted rides and reflects partial year operations for Green Line

July-December 2014 (after Green Line opening) Average Weekday Ridership by Service Type

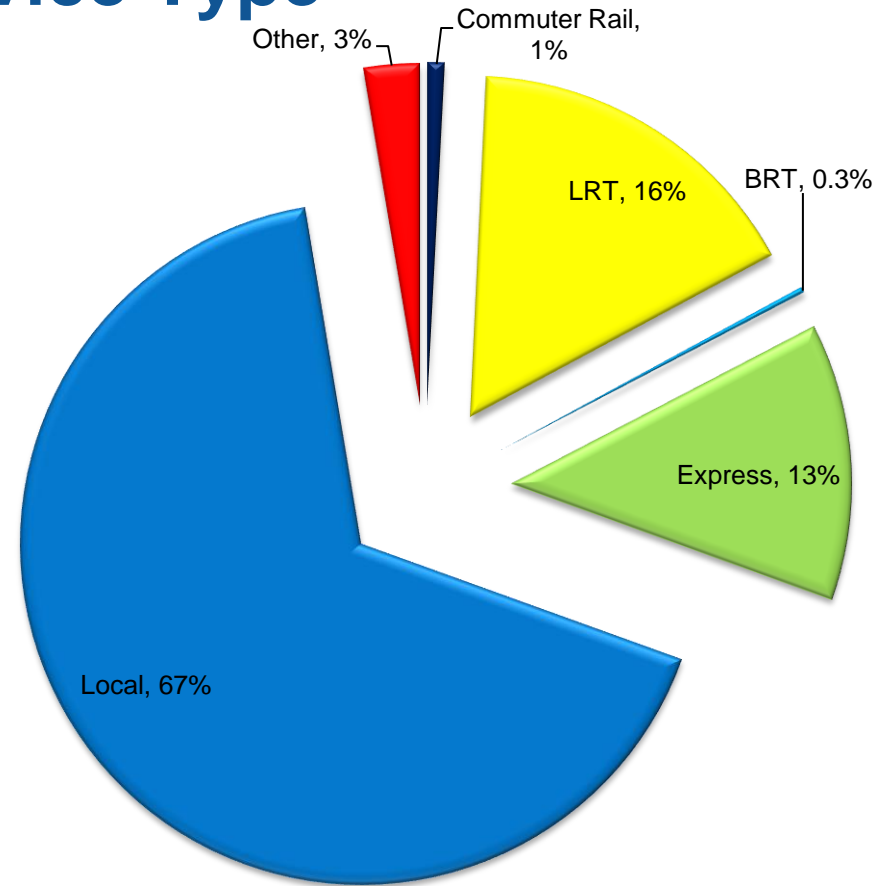
<u>Service Type</u>	<u>Average Weekday Rides</u>
Metro Transit Bus	216,184*
Blue Line	27,644
Green Line	34,548
Northstar Rail	2,539
Suburban Providers	19,882
MTS Regular Route	10,049
Metro Mobility	7,063
Transit Link	1,349
Metro Vanpool	664
University of MN	11,727

Total	331,649

*Excludes Maple Grove contracted rides

2014 by Service Type

- Commuter Rail - .72 M
 - LRT – 16.0 M
 - Express Bus – 12.8 M
 - BRT– 265,479
 - Local Bus– 65.3 M
 - Other* – 2.6 M
- Total – 97.6 M**



* Dial-a-Ride, Metro Mobility, Vanpool

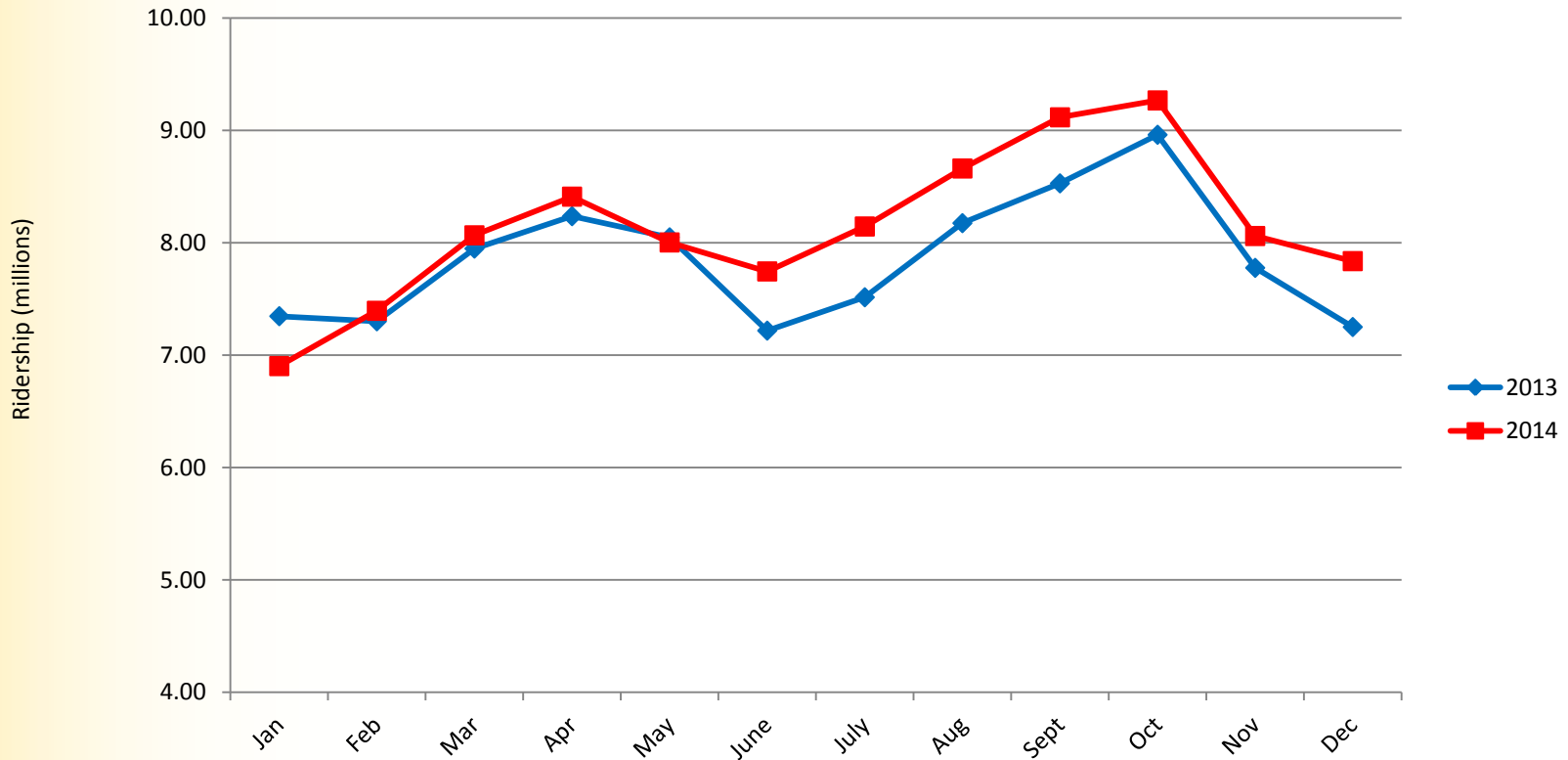
Annual 2014 to 2013 Comparison by Service Type

<u>Type of Service</u>	<u>% Change</u>
Commuter Rail	-8.4%
LRT	57.4%*
BRT	103.1%**
Express Bus	-3.7%
Local Bus	-3.3%
Dial-A-Ride	0.9%
Metro Mobility	8.1%
Metro Vanpool	-5.3%

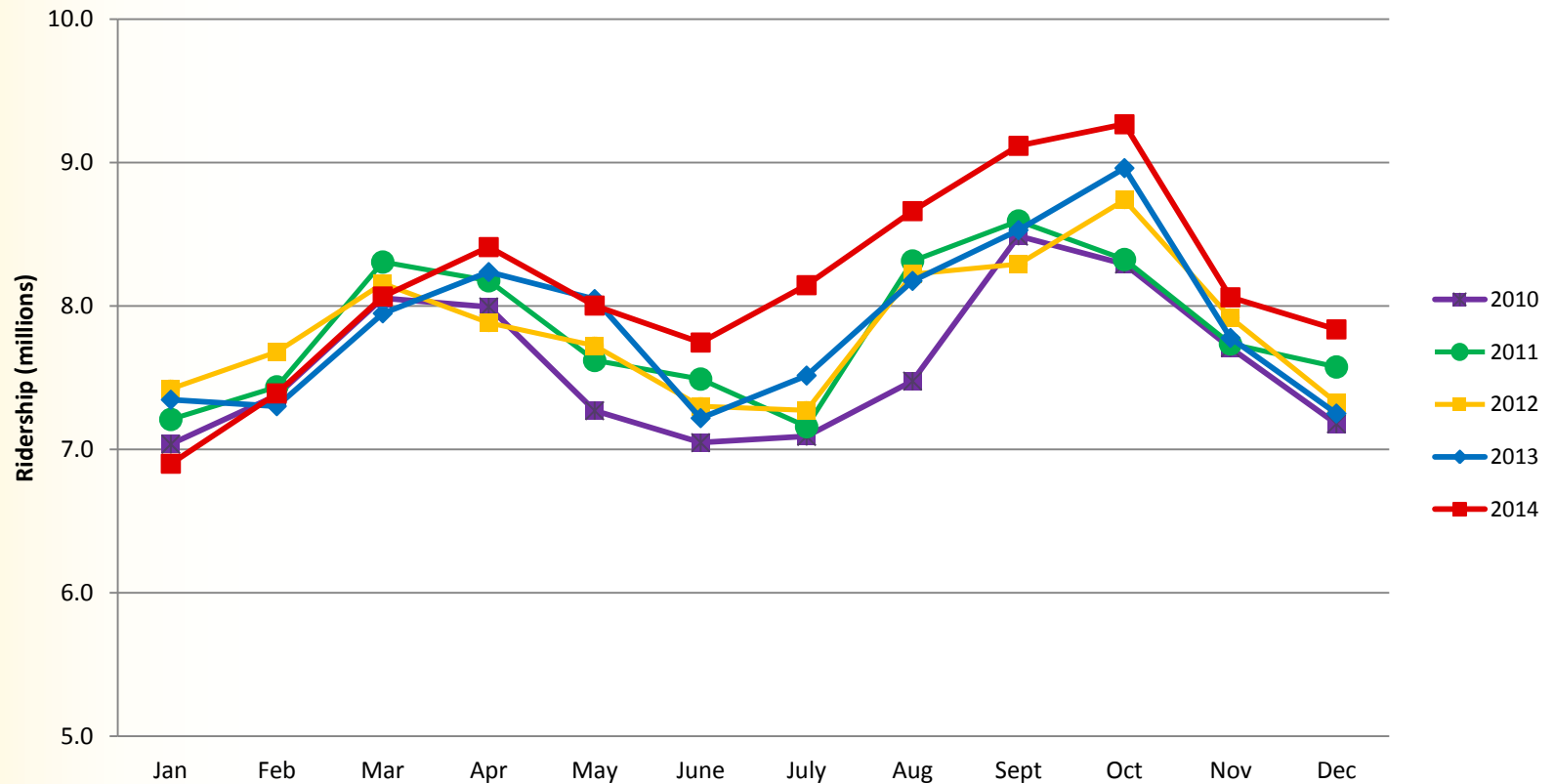
* Green Line started operations June 2014

** First full year Red Line operations

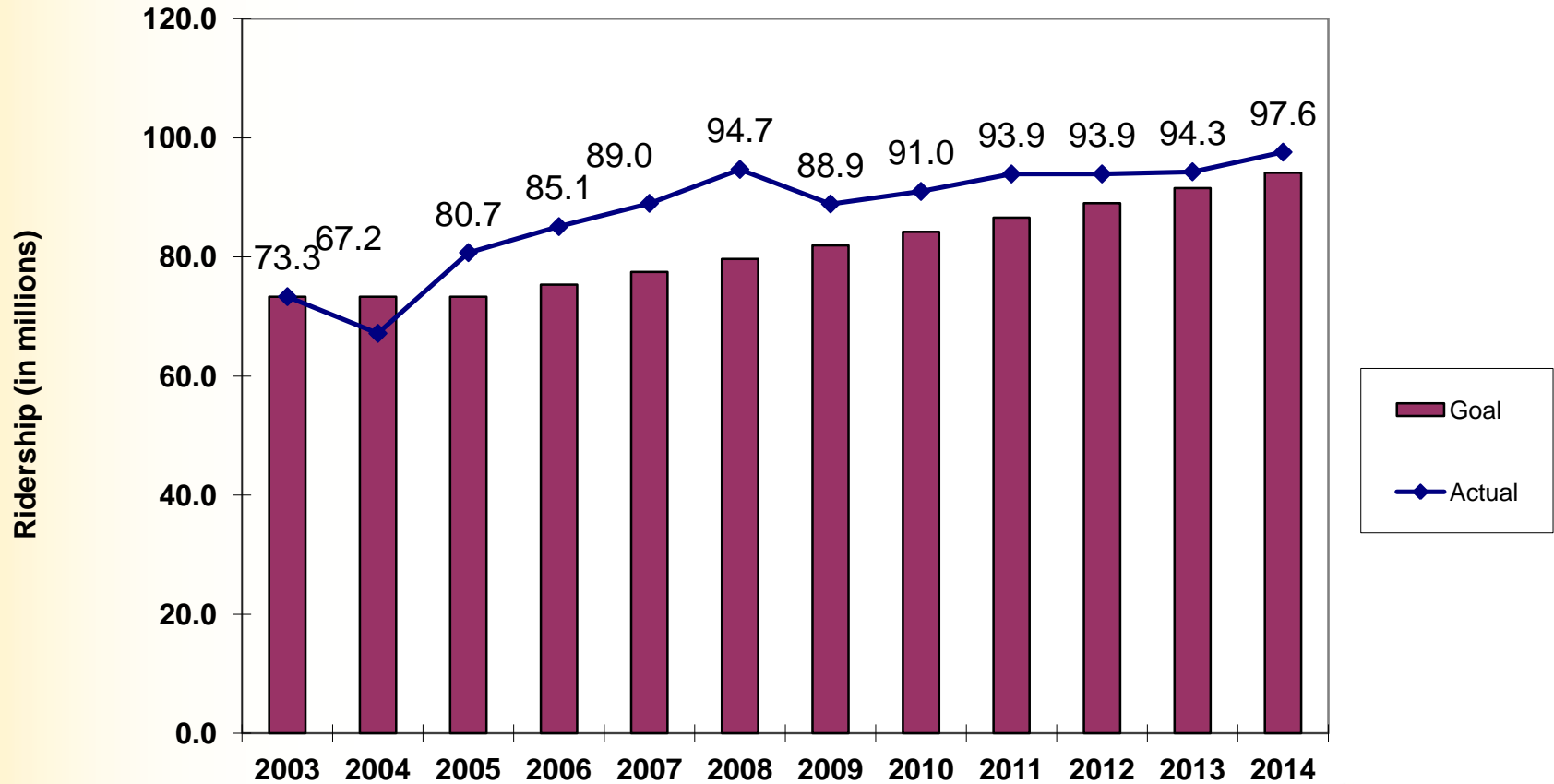
2014 - 2013 Monthly Comparison



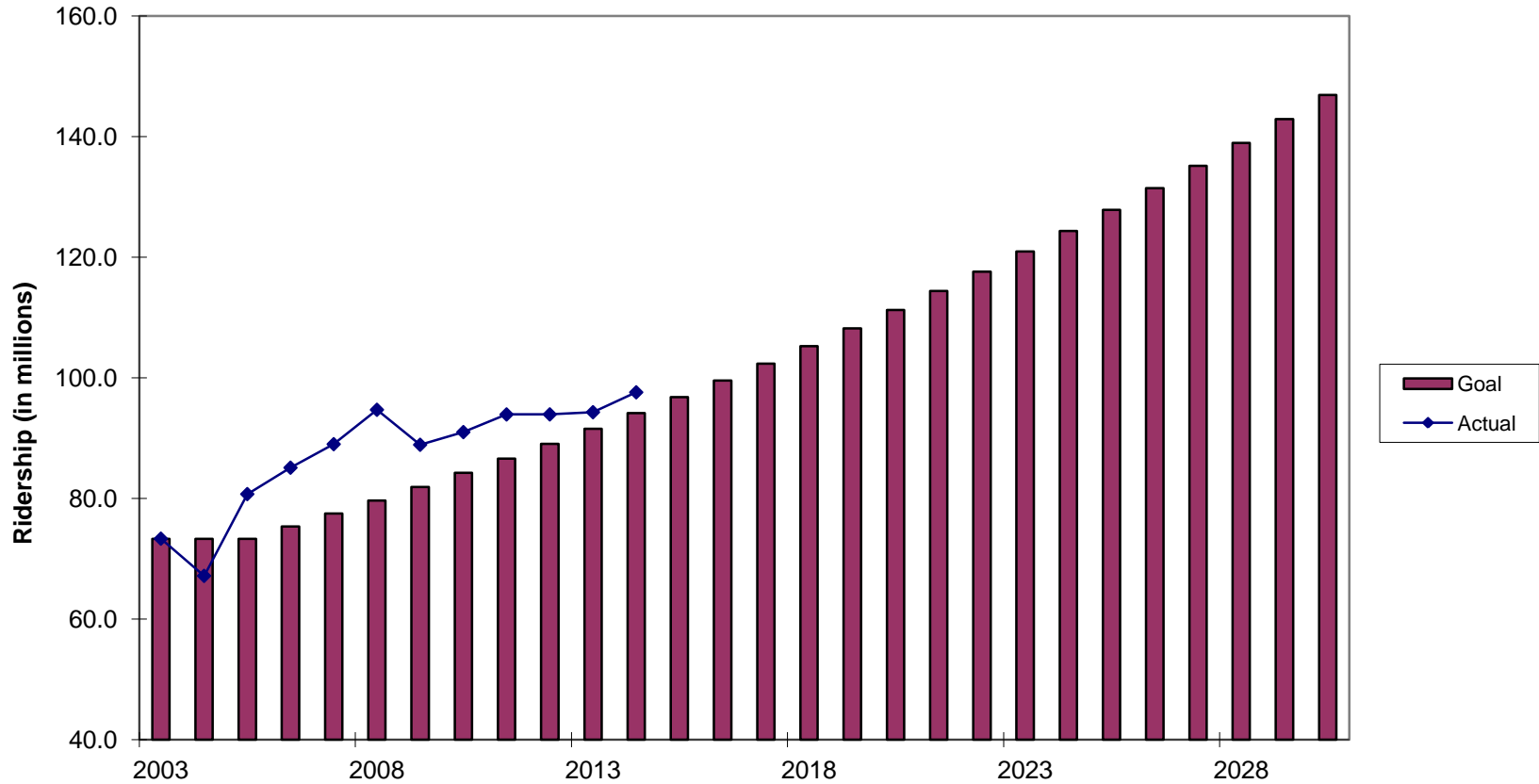
2014-2010 Monthly Comparison



Toward 2030 Ridership Goal



2030 Regional Ridership Goal



2014 Year End Regional Ridership Report

Questions