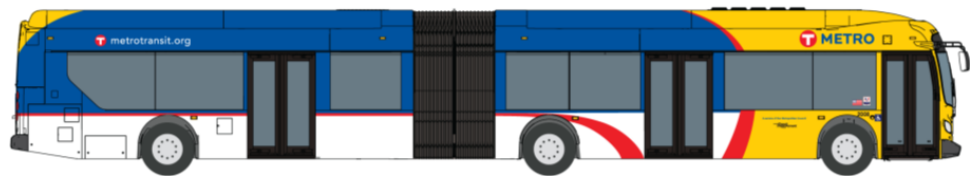




METRO Orange Line 2015 Work Plan

Metropolitan Council Transportation Committee
February 9, 2015

Charles Carlson
Senior Manager BRT/Small Starts
www.metrotransit.org/OrangeLine



I-35W Corridor


- **Minnesota's busiest commuter highway**
 - 210,000+ average vehicles
 - Bottleneck for freight and commuters
- **Most heavily-traveled express bus corridor**
>14,000 weekday rides, growing to >20,000
- **Orange Line completes vision built through past corridor successes**
 - Improve access to jobs
 - Catalyze development
 - Serve all-day, evening, weekend markets



2014 METRO Orange Line Accomplishments

- Developed and adopted Orange Line Project Plan Update
- Advanced I-35W & Lake Street Station to 60% design completion
- Entered FTA Small Starts Project Development
- Secured \$18 million, including full funding for Project Development



 FTA approval

 FTA evaluation and rating

Small Starts Significance

- Unlocks \$3M awarded by CTIB for 2015
- Keeps project on track for 2019 opening
- Puts Orange Line “on the map” nationally
- 31 projects in 16 states now in Small Starts Project Development
 - 22 BRT
 - 7 Streetcar
 - 1 Commuter Rail
 - 1 LRT



2015 Orange Line Goals

- Advance Station and Guideway Design
- Continue Progress on Project Funding
- Complete Environmental Review (DCE)
- Continue Inclusive Public Process

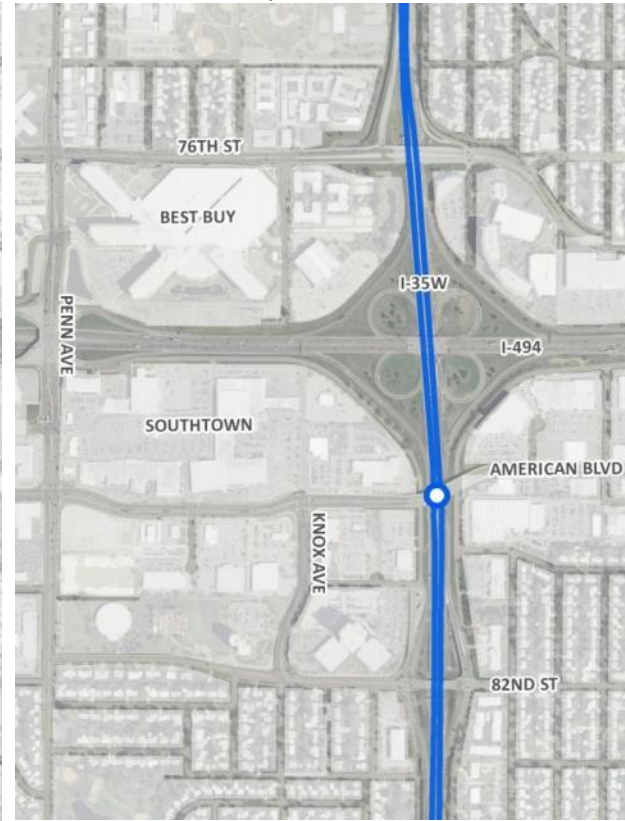


Station/Guideway Design: Knox Avenue Study

17,000 RESIDENTS
13,400 JOBS

12,800 RESIDENTS
13,100 JOBS

4,600 RESIDENTS
8,100 JOBS



EXISTING ROUTE 535

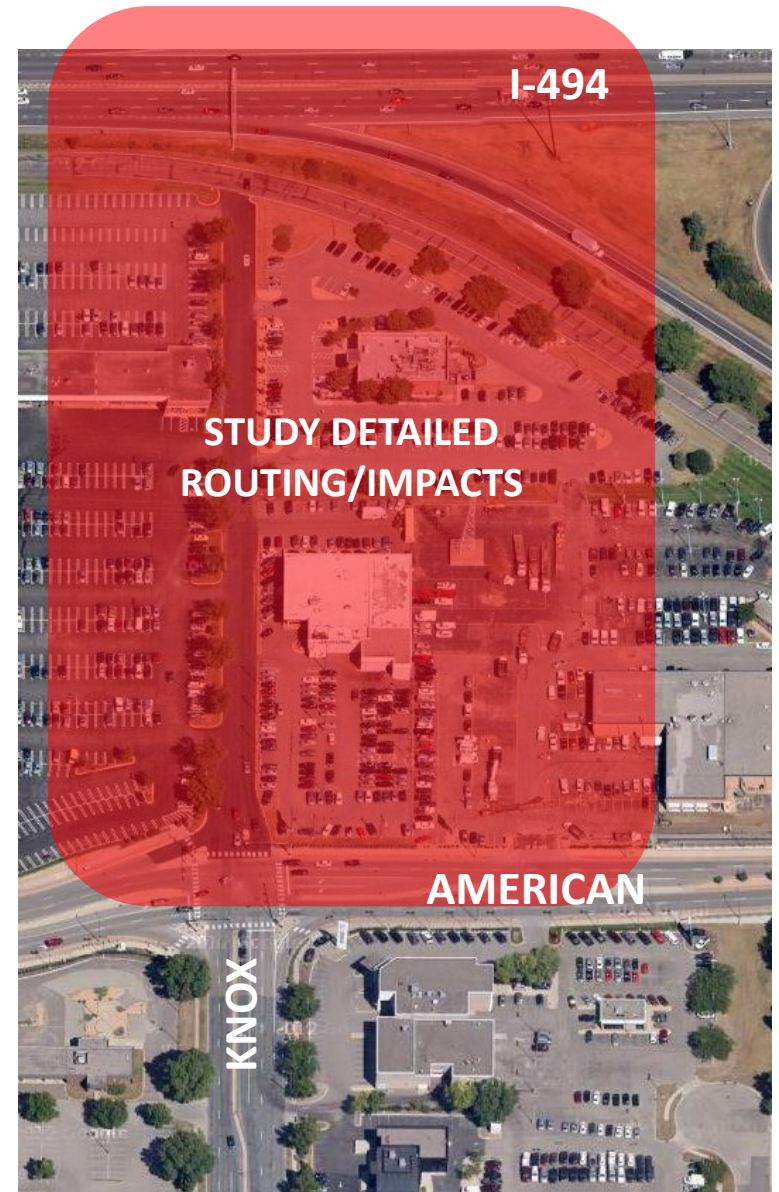
KNOX AVENUE OPTION

I-35W OPTION



Knox Avenue Study

- Early design input to:
 - Ongoing land use discussions
 - Future real estate negotiations
 - Upcoming design/engineering
- Study to develop concepts from American Blvd. across I-494
 - Three scenarios for alignment
 - Station placement
 - Traffic analysis
 - Cost estimates



Station Design: Burnsville Transit Station

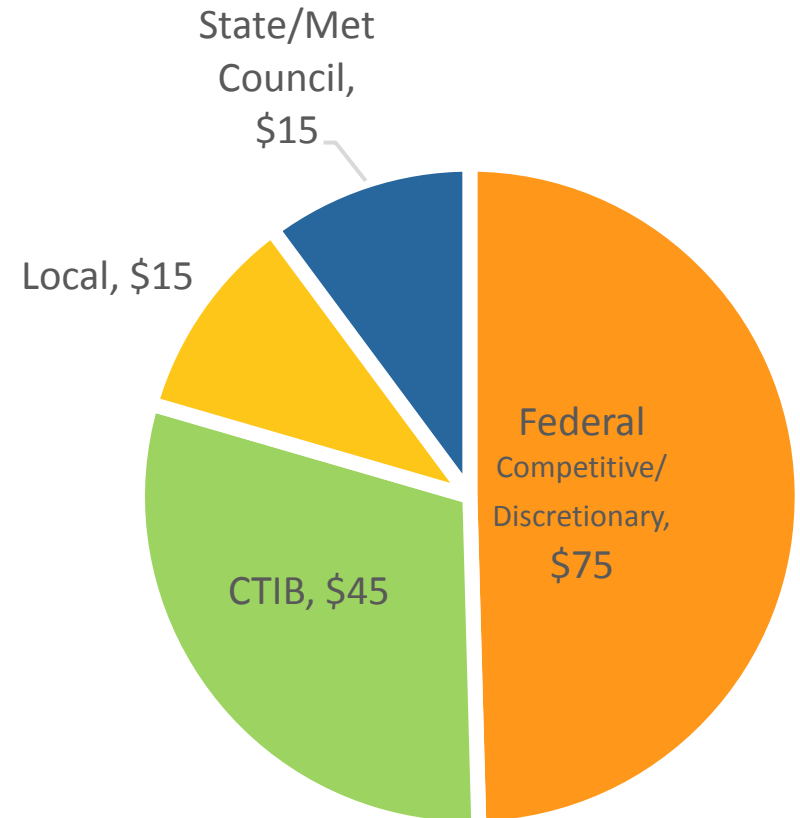


Burnsville Transit Station Evaluation

- Developing common “fact packet” with MVTA to lay out background issues
- Consultant-assisted facilitation and evaluation considering:
 - Capacity, design, access, reuse
 - Travel time, walk time, transfer options, safety
 - Explore potential long-term routing in future southward extension
- Bring station evaluation for public review, TAC, PAC recommendation
- Select location for Orange Line southern terminus (by midyear 2015)

Project Funding

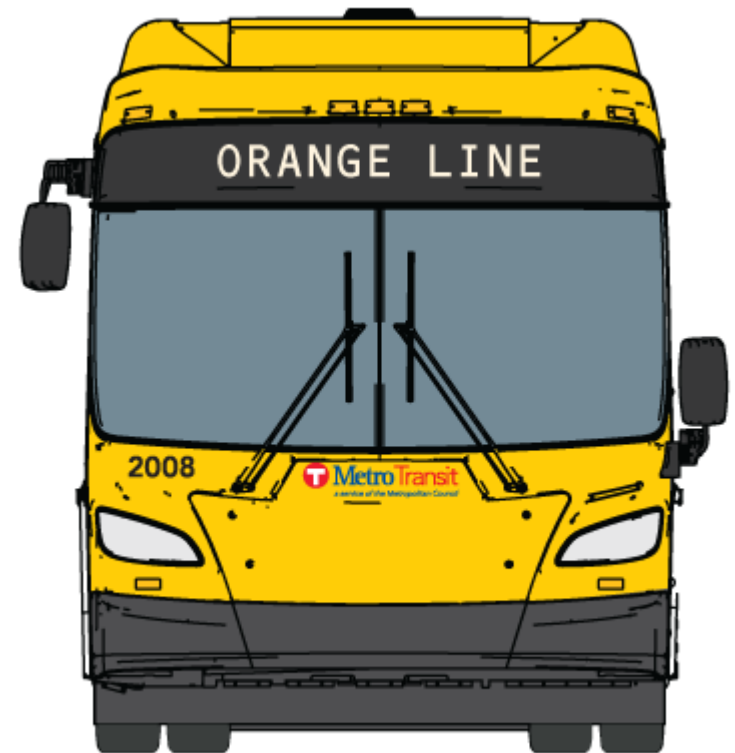
- Total Capital Cost: \$150M (2017 \$)
- \$18 M secured in 2014
- CTIB requires 10% Local share to be identified by 9/1/15
 - \$15 million local, sources TBD
 - \$12 million additional state funding needed by mid-2016



Capital Costs, in Millions

Environmental Documentation

- Analyze potential impacts through “Documented Categorical Exclusion”
- Project schedule assumes early 2016 publication of environmental document
- Needed to pursue utility relocation, final design, real estate acquisition, and other project implementation steps



Inclusive Public Process

- Continue technical and interagency coordination with local partners
- Increase role of I-35W Solutions Alliance as policy advisory committee
- Update Public Engagement Plan to reflect Project Development work phase
- Increase capacity for engagement with project-funded outreach staff



Project Schedule

	2015	2016	2017	2018	2019
Environmental Work	NEPA				
Small Starts Process	Project Development & Engineering		Construction		
Funding Commitments	Local Funds	FTA			
Begin Revenue Service					



METRO Orange Line Update

Metropolitan Council Transportation Committee
February 9, 2015

Charles Carlson, Senior Manager BRT/Small Starts
612-349-7639

charles.carlson@metrotransit.org
www.metrotransit.org/OrangeLine