

SOUTHWEST

Green Line LRT Extension

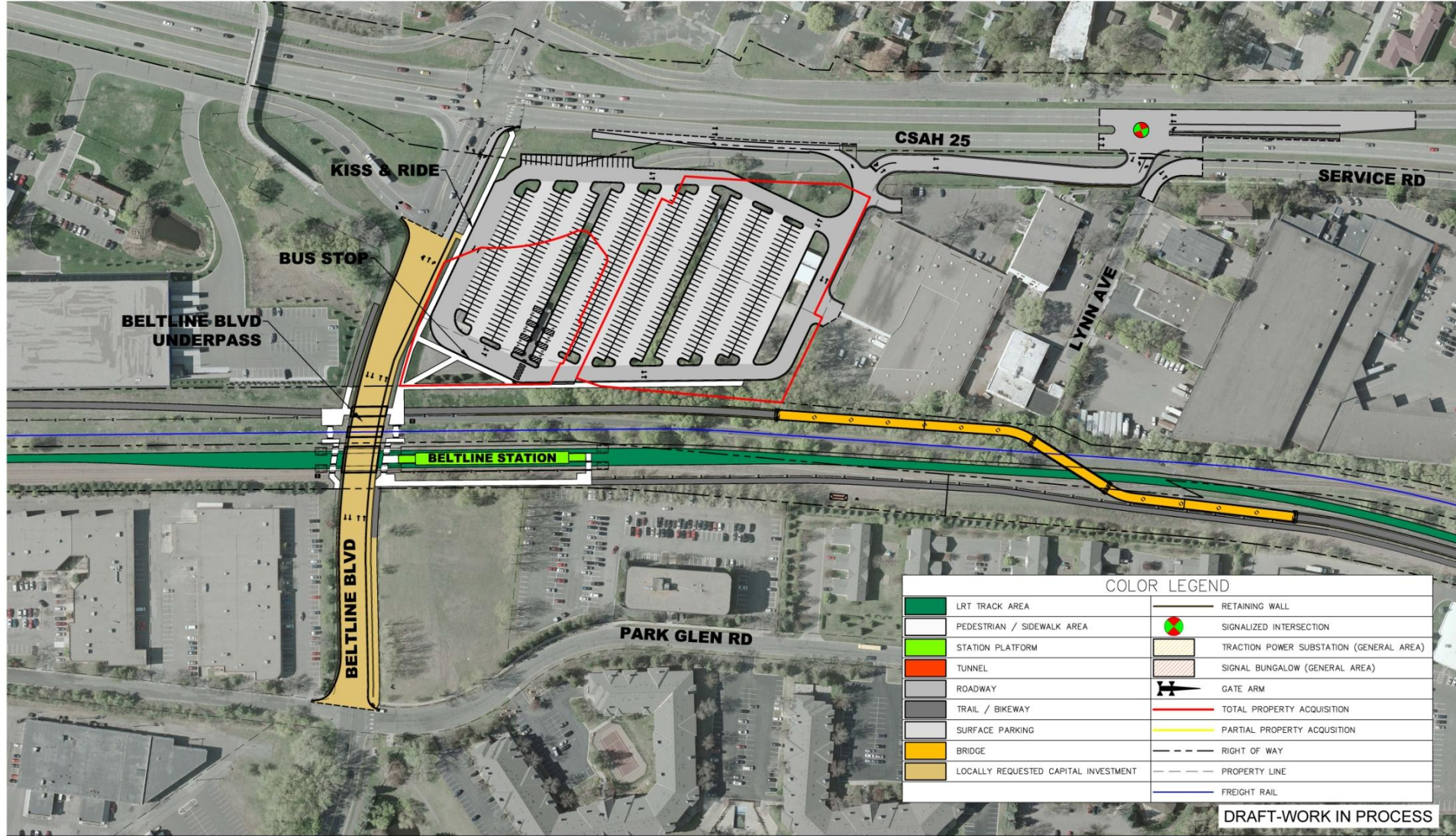


St. Louis Park Beltline Blvd. Underpass Subordinate Funding Agreement #2

January 12, 2015



Beltline Blvd. Underpass



LOCALLY REQUESTED CAPITAL INVESTMENT LRCI #18 ST. LOUIS PARK - BELTLINE BLVD UNDERPASS

Beltline Blvd. Underpass Elements

- Excavation
- Temporary shoring
- Utility relocations
- Retaining walls
- Bridges for the pedestrian/bike trail, freight railroad tracks and LRT tracks
- Direct fixation of the LRT track
- Pump station for storm water

Master and Subordinate Funding Agreement (MFA/SFA) Timeframe

- December 2014: MFA
- January 2015: SFA for Design and Construction Cost Estimates
- February 2015: SFA for Environmental Documentation
- 1st Quarter 2016: SFA for Construction