

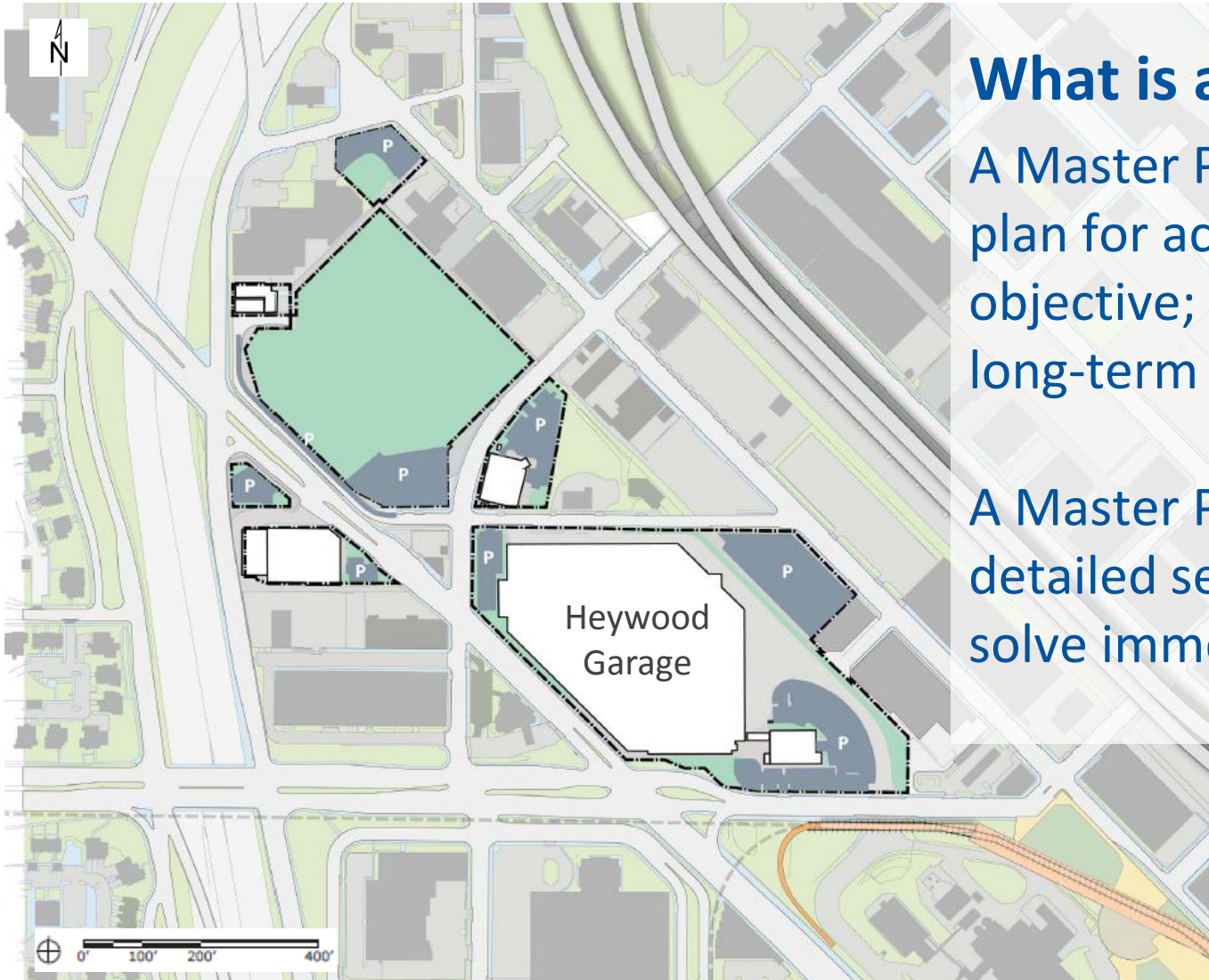
Campus Vision and Metro Transit Police Department Facility



Pierce Canser
Cathy Nordin

Engineering and
Facilities

Heywood Campus Master Plan



What is a Master Plan?

A Master Plan is a general plan for achieving an objective; a comprehensive long-term strategy.

A Master Plan is *not* a detailed set of actions to solve immediate problems.

Heywood Campus Master Plan

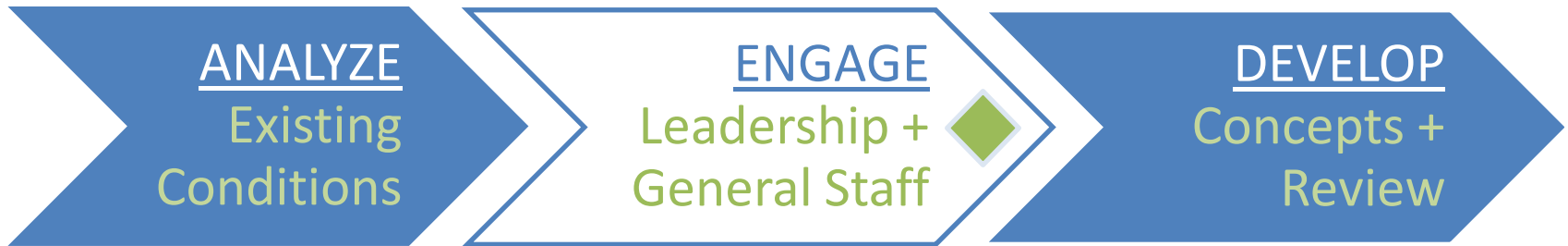
This map represents the projects anticipated to be

- **Why are we doing this?**
 - Growth
 - Integration
 - Operations
- Allows us to address things we have funding for now while providing a long-term vision for things we'll need tomorrow.



Project Sequence

- Inventory + Audit
- Listen + Learn
- Develop + Review



Current position

MTPD Headquarters

Current location – Minnehaha Ave.



MTPD Headquarters

Problem – Lack of space



Evidence Processing



Office



Roll Call



Parking

MTPD History

- 2011 ➤ Identified need for additional space

- 2012 ➤ Potential sites evaluated; near Heywood campus selected.

 ➤ Target Field Station co-development opportunity negotiated

- 2013 ➤ Target Field Station co-development ended

MTPD History

- 2014 ➤ Project restarted
- Heywood Campus Master Plan process
 - Projected MTPD growth revisited

Projected Staffing

- 2014 169
- 2020 294
- 2030 400

MTPD Headquarters

Project Objectives

Provide a new Police Headquarters which will house the increased staff to accommodate the projected growth in the transit system.

Appropriate Police Facilities



Office



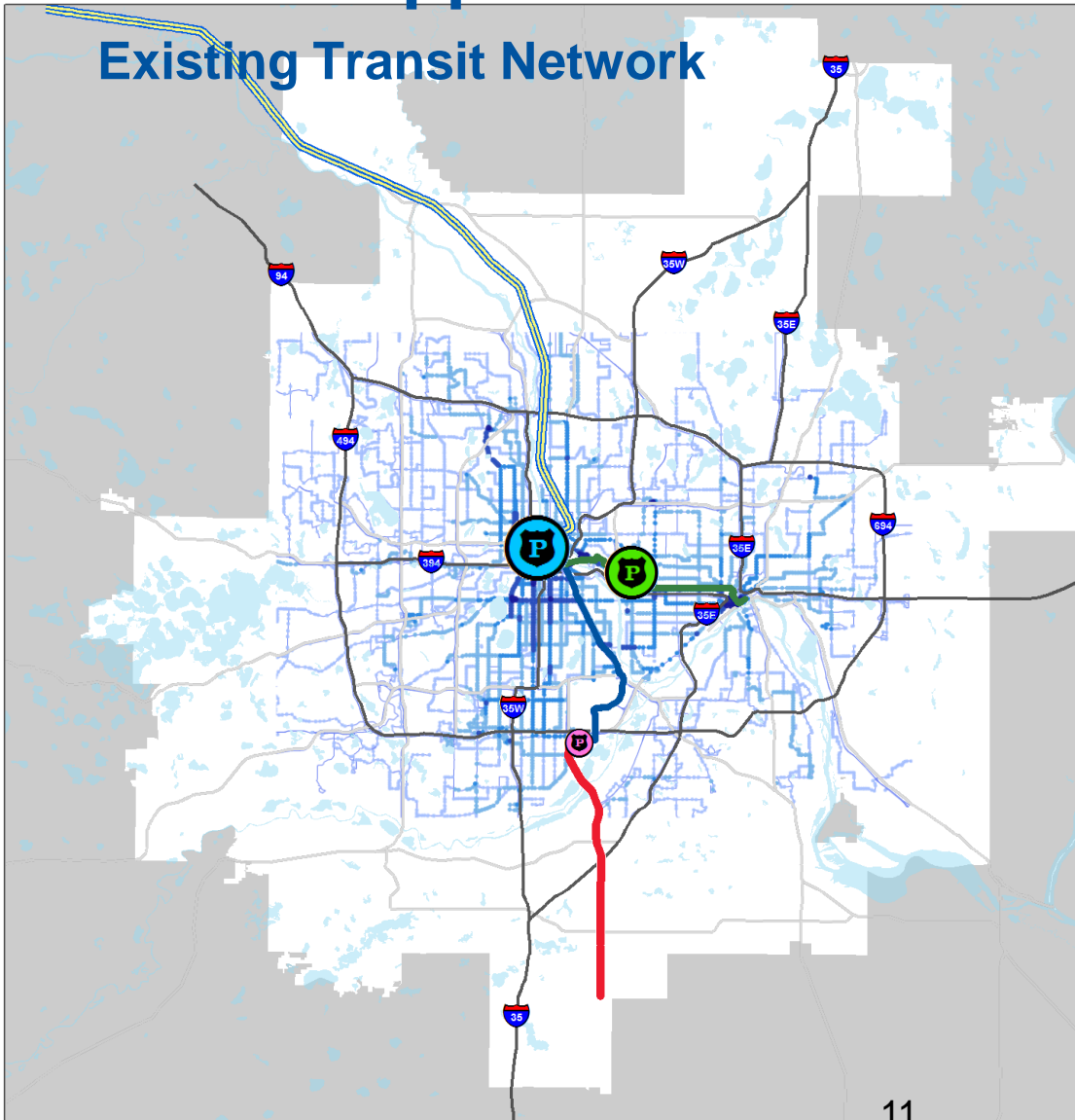
Roll Call



Evidence Processing

MTPD Supported Areas

Existing Transit Network



Police are deployed from Headquarters

- Ride the METRO lines
- Deployed by bus, squad, foot and bike to service area.

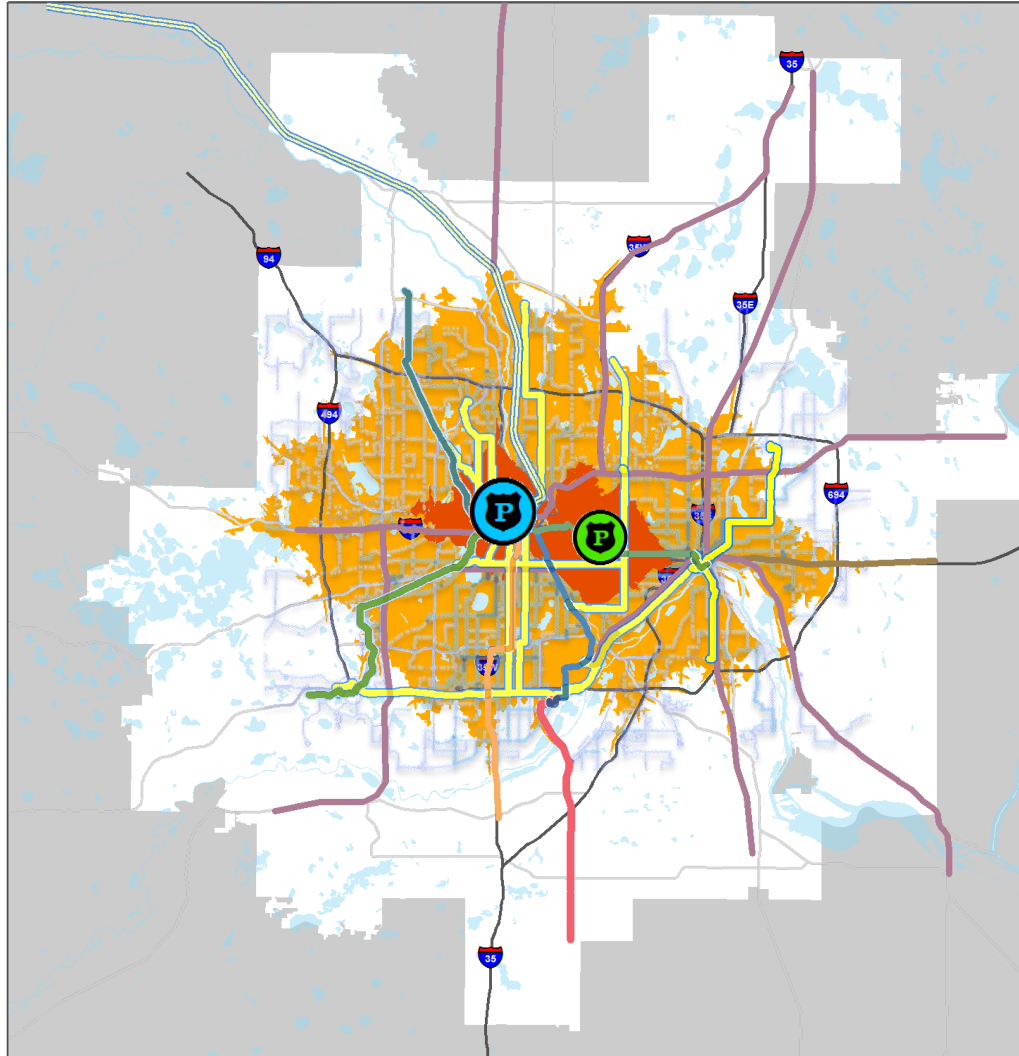
Future Police Headquarters

- Future Police HQ
- East Command

Existing Transit Service

- Blue Line
- Green Line
- Northstar Line
- Red Line
- Transit route frequency

MTPD at Heywood Campus



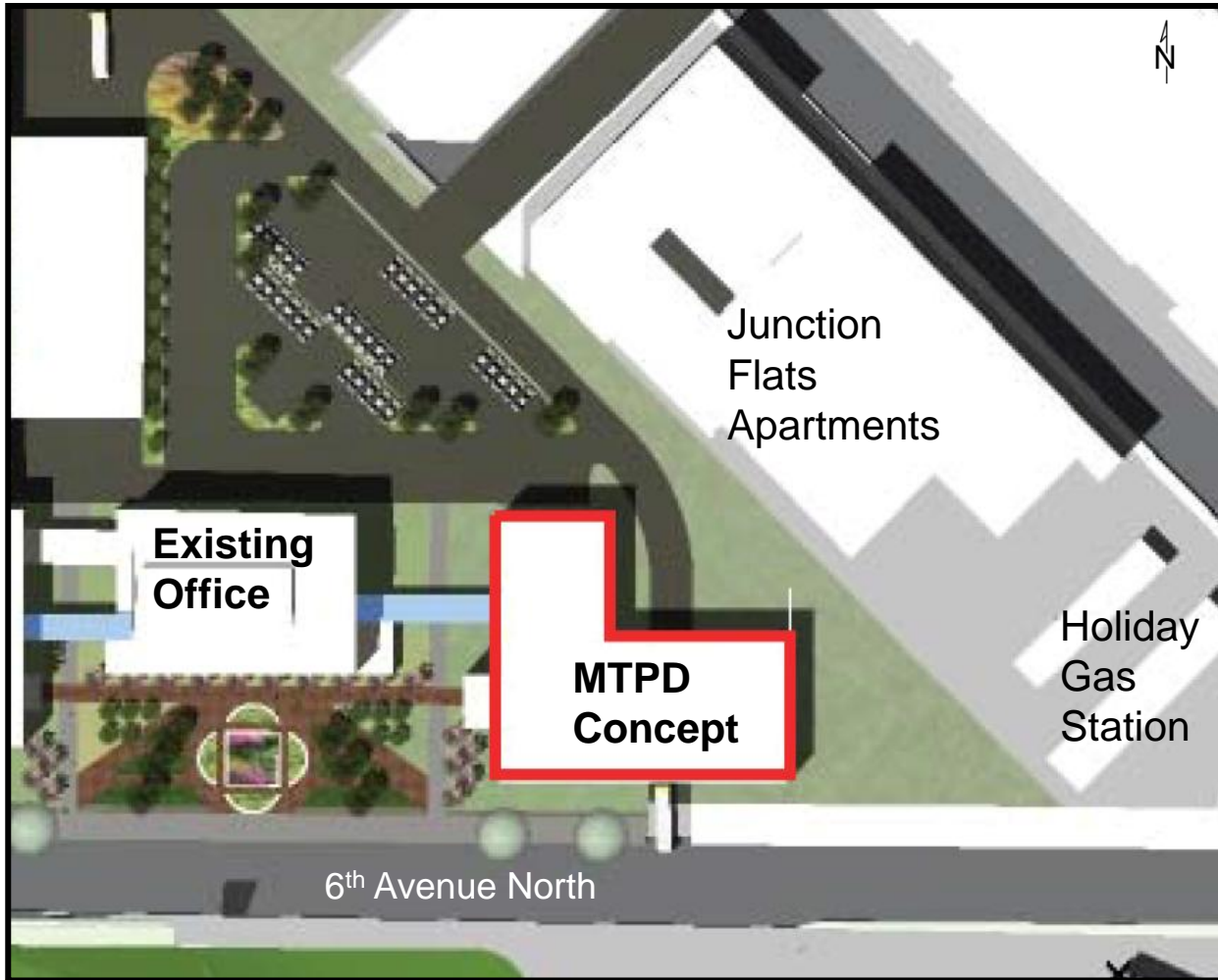
Benefits of Campus location

- Response time - high call volume
- Efficient deployment of squad cars to patrol areas
- Supports Thrive Outcomes

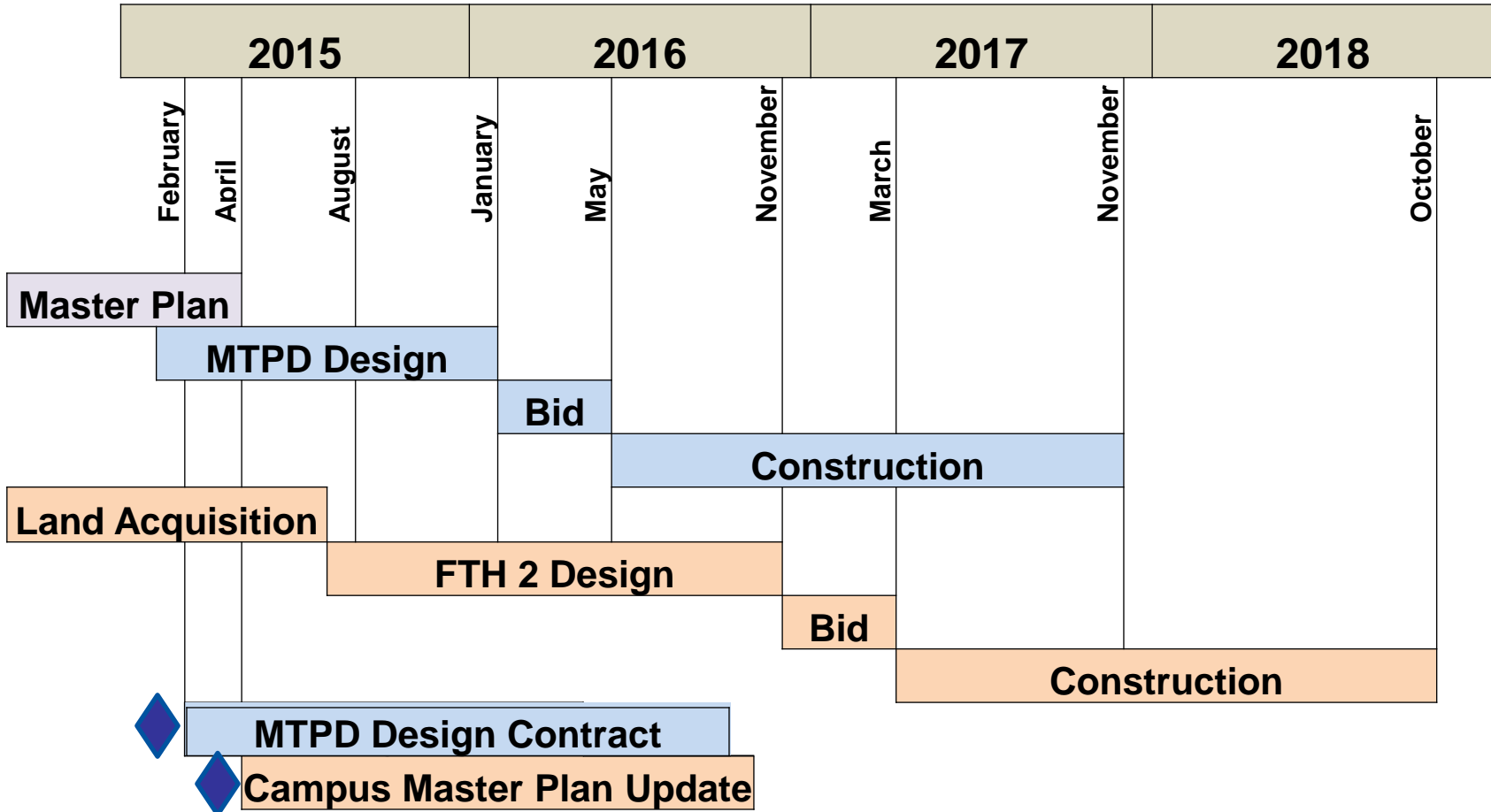
Police Travel Time

- 7 minute drive
- 15 minute drive
- Future Police HQ
- East Command

MTPD at Heywood Campus



FTH Campus – Project Schedule





Questions?