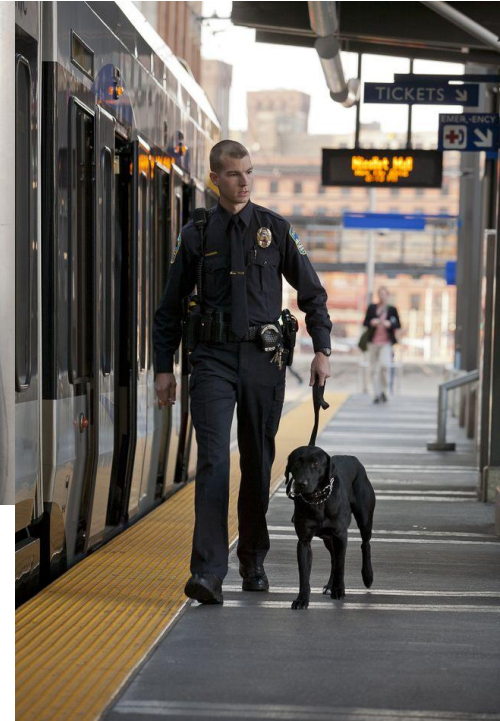


# Metro Transit Police Update

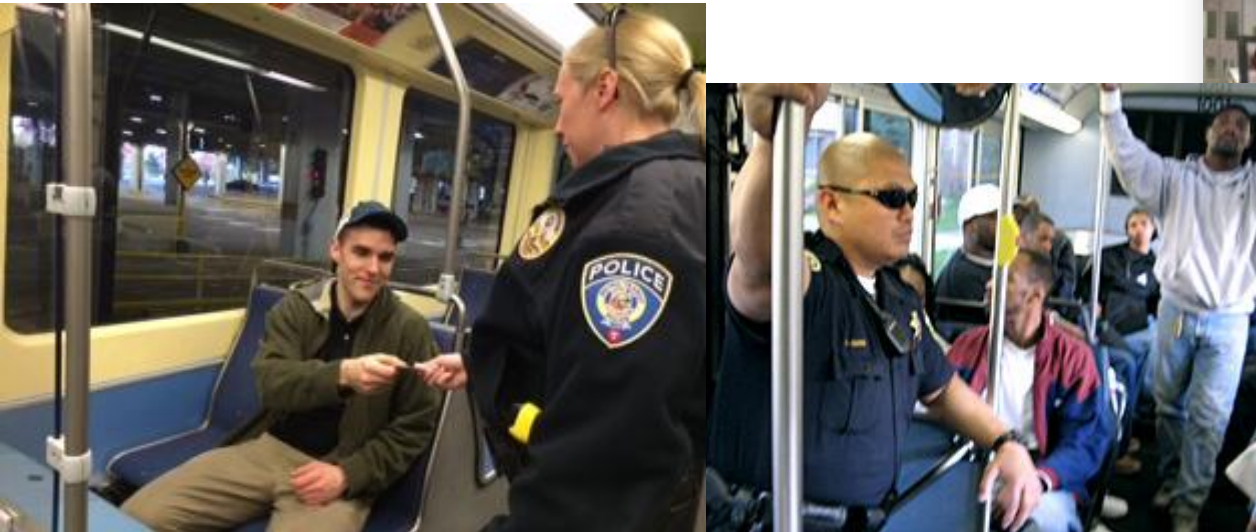


## Metro Transit Police



John Harrington  
Chief of Metro Transit Police  
June 22, 2015

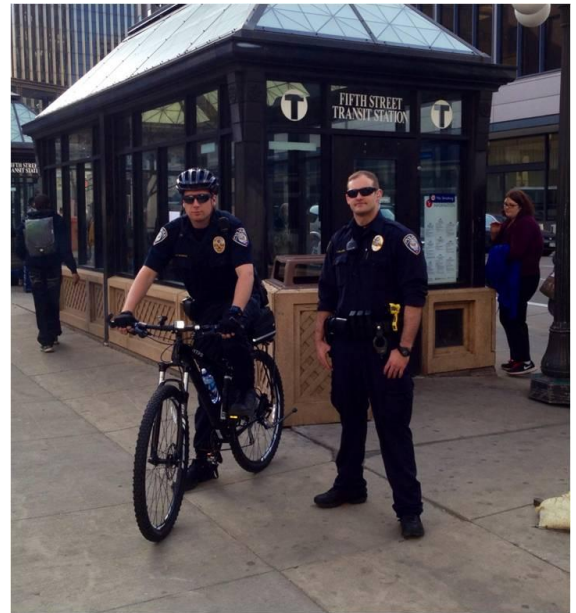
**On Board, On Foot, On the Rails-  
We commit to work for the  
personal safety, quality of life,  
and protection of property for the  
members of our metropolitan  
community.**





**1.3 million Fare Checks**  
**31,000 On boards**  
**5509 Arrests and Tags**  
**9 Internal Affairs complaints**









# Problem Solving Counter Threat Unit & Predictive Policing



BREAKING FREE'S  
**DEMAND**  
change  
PROJECT



# High Tech meets High Touch policing







# Metro Transit Police Staffing

- **2015**
- **205 sworn police officers**
  - **110 Full-time**
  - **95 Part-time**
  - **12 CSO**
  - **11 Admn support**
  - **3 Crime Analysis**

- **2011**
- **130 sworn police officers**
  - **68 Full-time**
  - **62 Part-time**
  - **12 CSO**
  - **5 Admn Support**

## Changes to Agency Demographics

• Rate +	Demographic	2011	2015
• 7 x	Asian-American	2	16
• 5 x	Afro-American	3	15
• 3 X	Women	7	27
• 5 X	Somali	1	5
• 2 X	Latino	6	15
• <u>2 x</u>	<u>Native American</u>	<u>0</u>	<u>3</u>
• 30%		19	77*





# Getting the right people on the Bus





# 1<sup>st</sup> in the nation





# Community Outreach and Equity





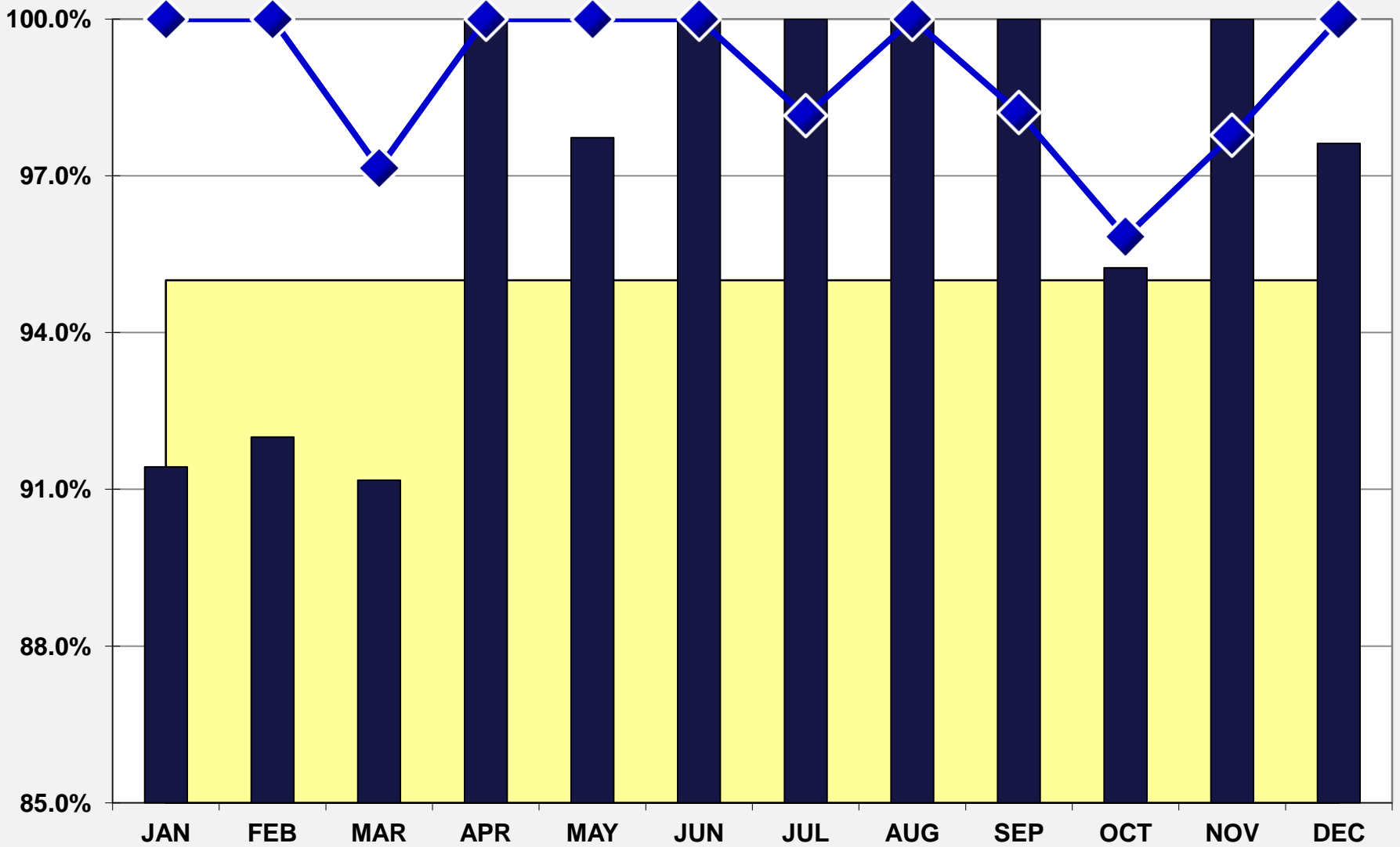
# POLICE RESPONSE TIMES TO PRIORITY #1 CALLS

Percentage under 7 minutes

Goal - 95.0%

December - 100.0%

YTD Average - 98.9%



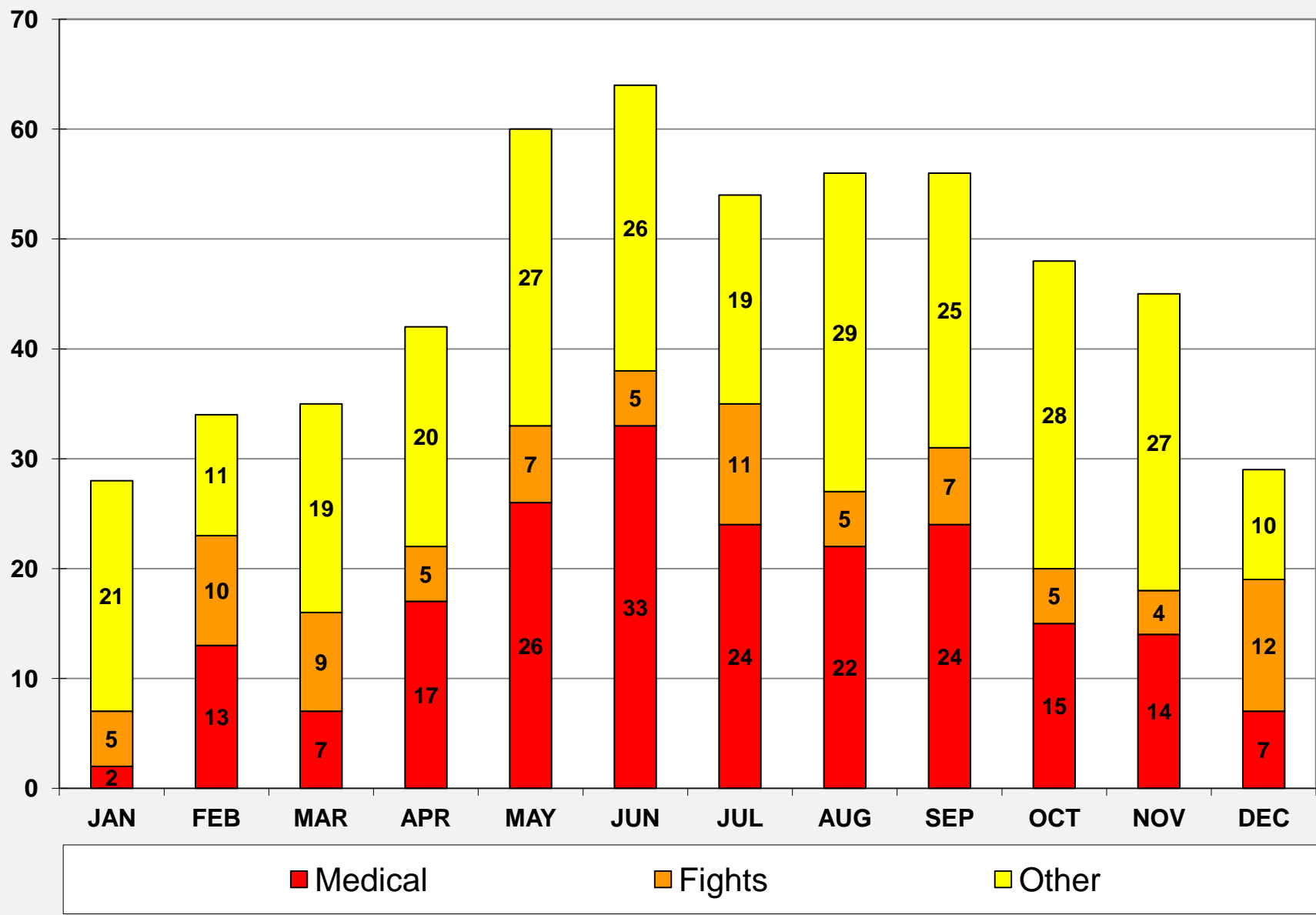
2014 Goal

2013 Actual

2014 Actual

# Priority 1 Calls Breakdown - 2014

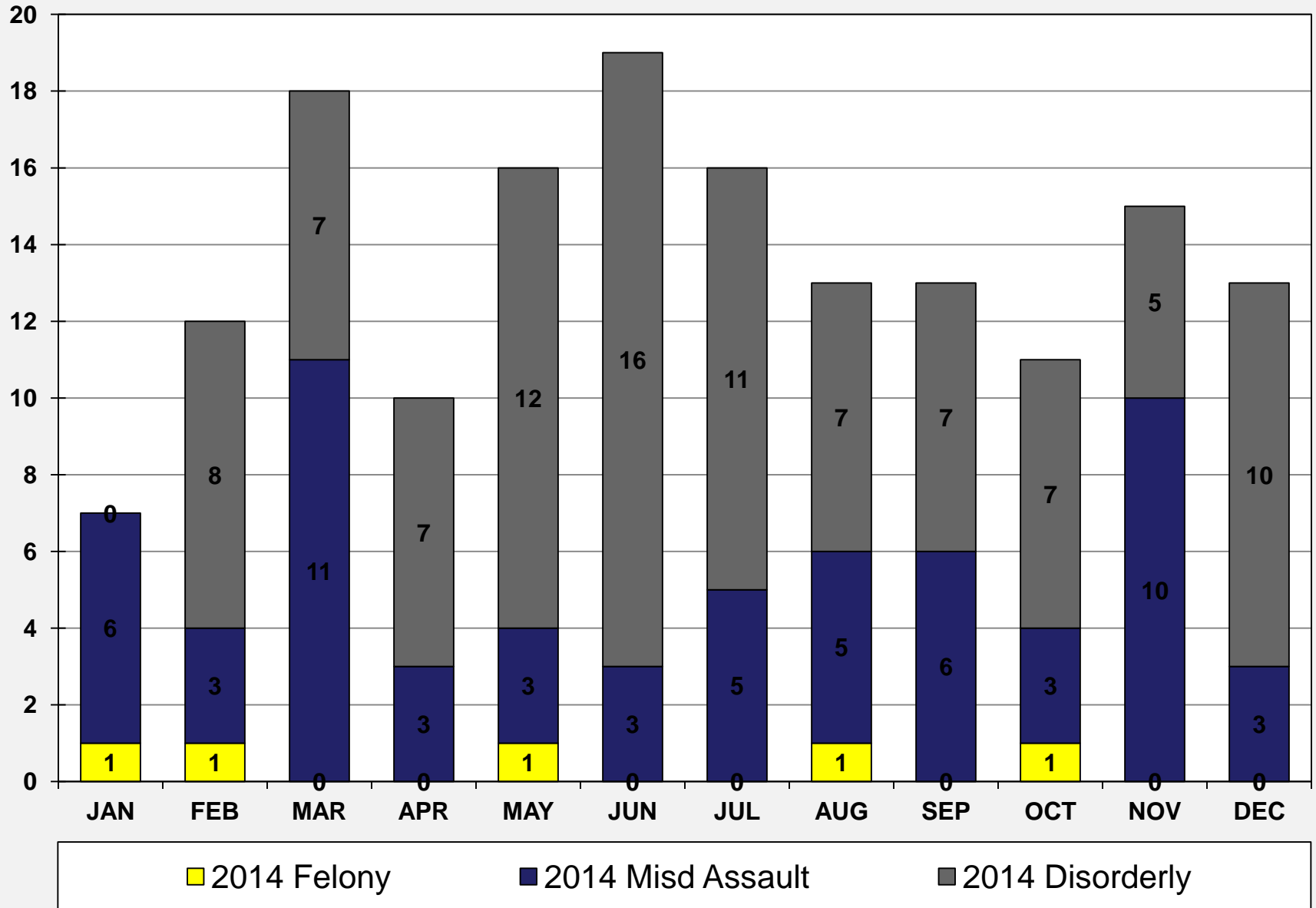
December Total - 29  
Medical - 7    Fight - 12    Other - 10



# Driver Assault by Category 2014

Average / Month YTD = 13.6 Total

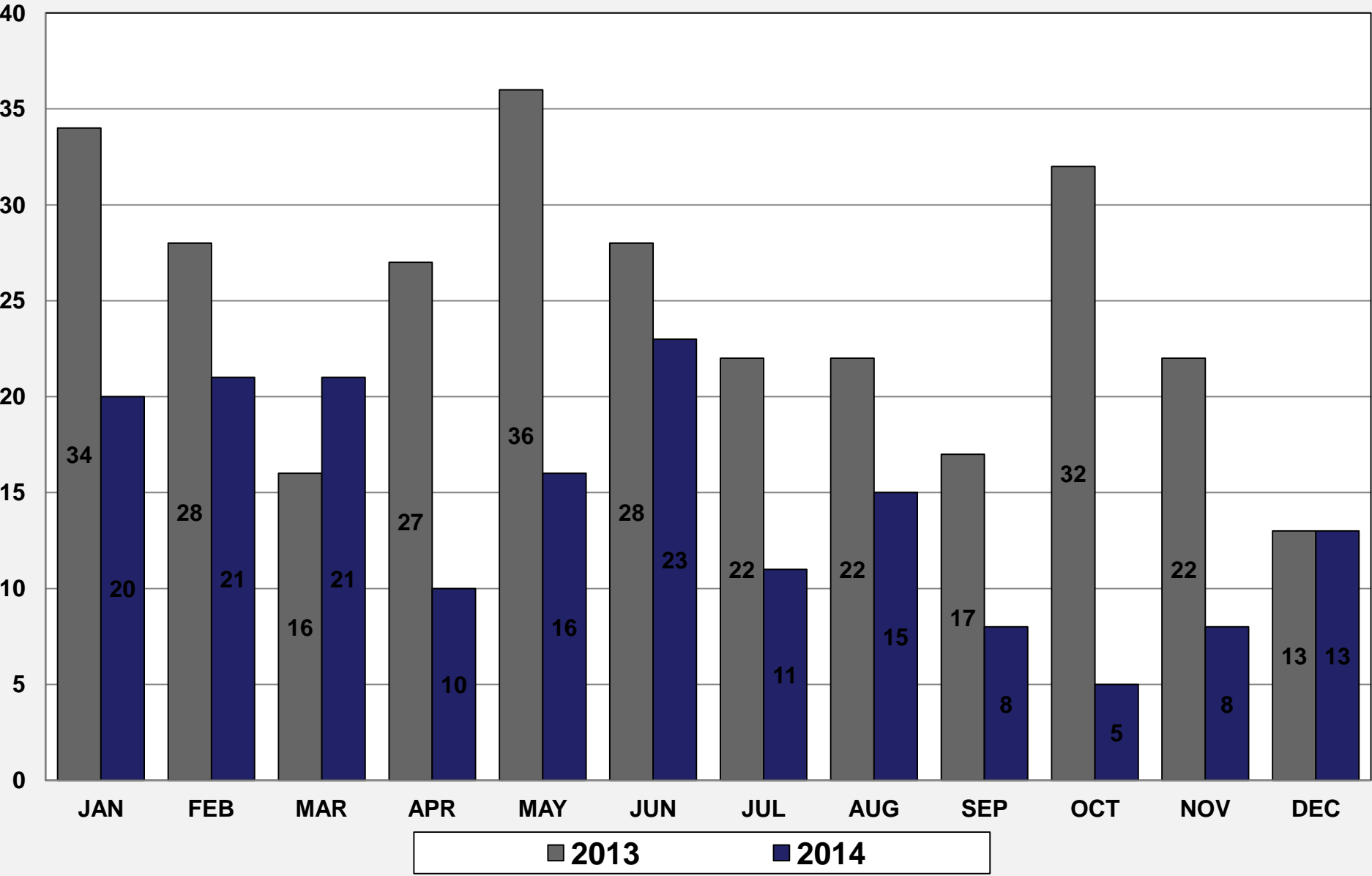
0 - Felony    3 - Misdemeanor Assault    10 - Disorderly





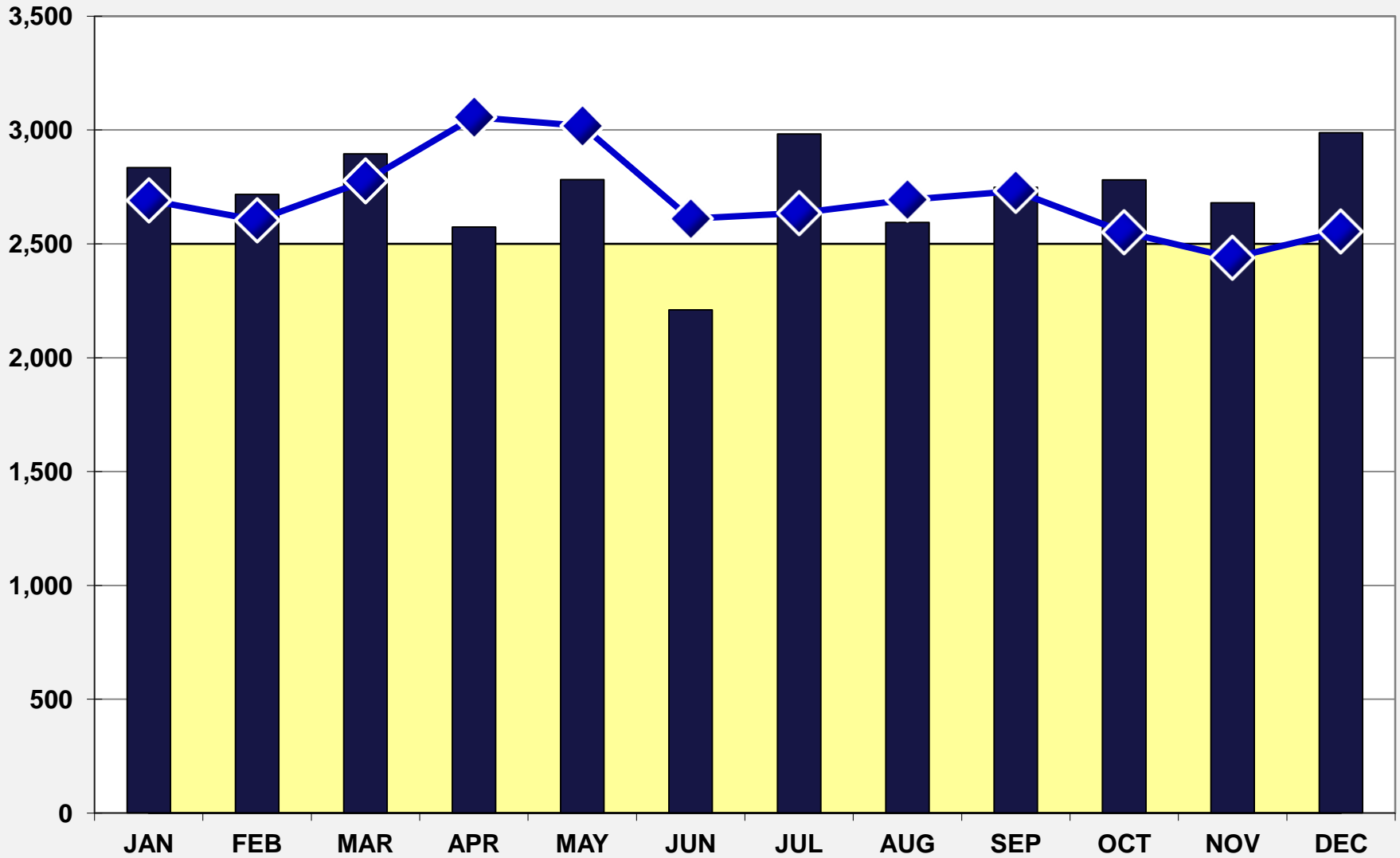
# Cell Phone Theft

January thru December 2014  
2013 - 297    2014 YTD - 171



# METRO TRANSIT POLICE RIDES ON-BOARD BUS

Goal - 2,500    December - 2,554    YTD Average - 2,697



2014 Goal
  2013 Actual
 
 2014 Actual