

I-94 & Manning Avenue Park-and-Ride Lake Elmo

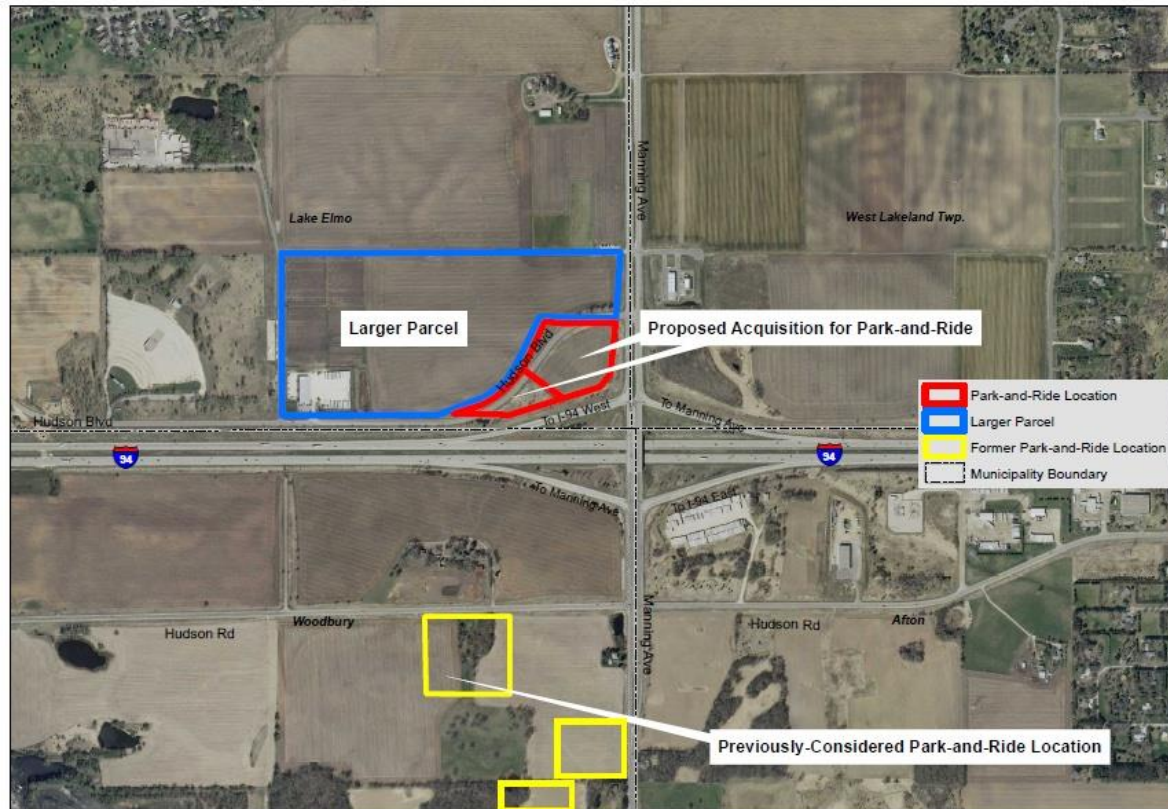
Metropolitan Council
Transportation Committee
November 23, 2015



Project Background

- Park-and-rides along I-94 east are operating at or near capacity (Woodbury Theater is 89% occupied and Guardian Angels is 99% occupied)
- \$9.1M awarded to project:
 - Develop Park and Ride = \$5.35M
 - 4 Articulated Buses = \$2.8M
 - Express Bus Service = \$0.96M
- Proposed location aligns with preferred alternatives from Gateway Corridor Transit Study
- Proposed location is supported by the City of Lake Elmo staff

I-94 Manning Park-and-Ride Site Options



Attachment A: I-94 & Manning Avenue Park-and-Ride: Site Aerial Map



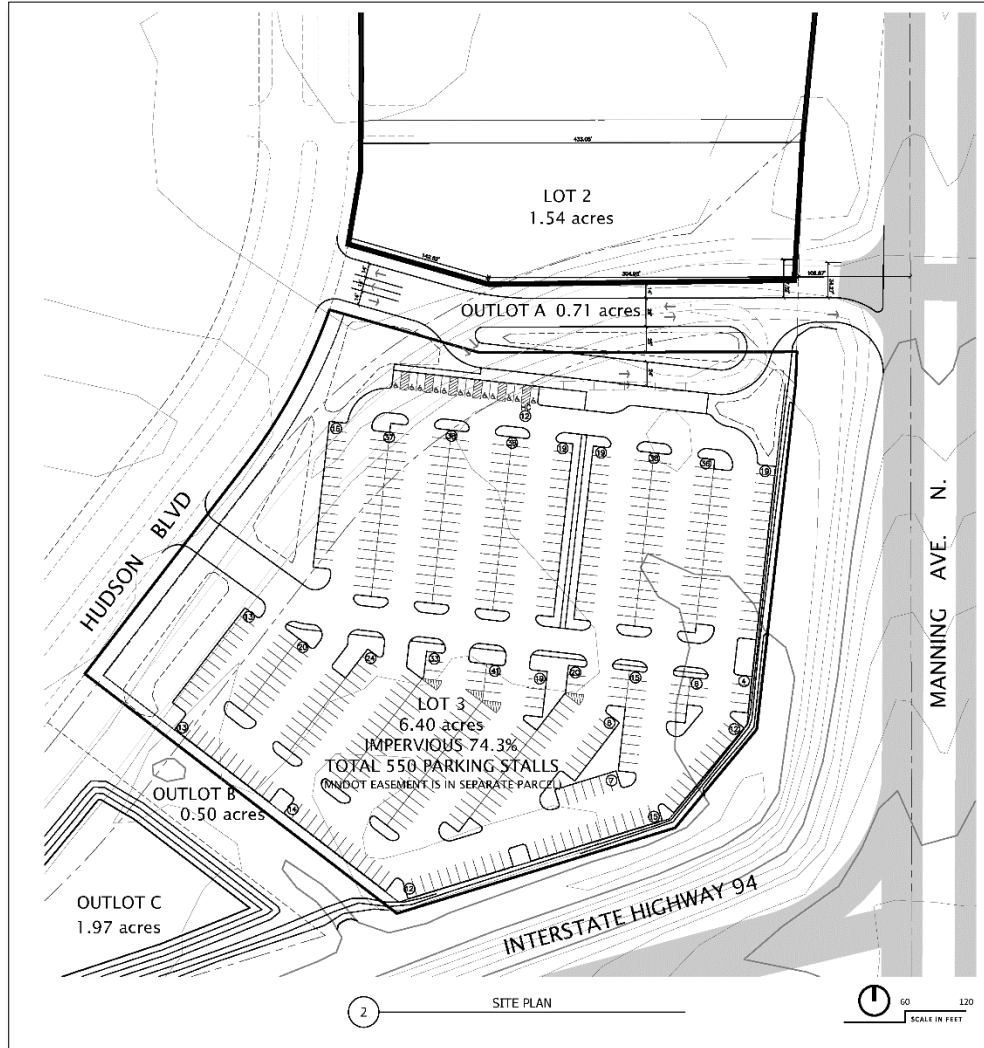
0 0.125 0.25 0.5 Miles

June 24, 2015

 Metro Transit

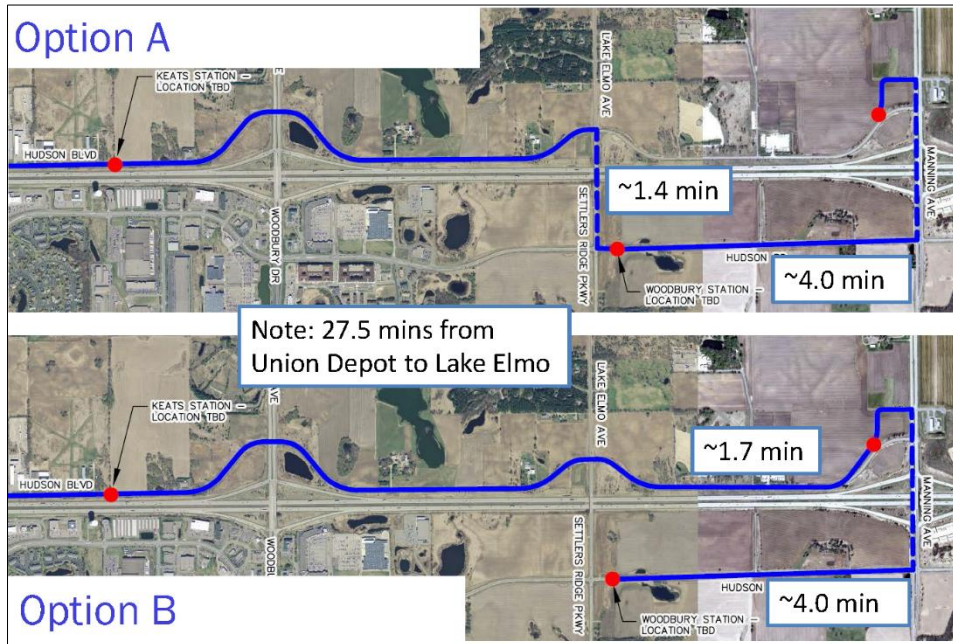
- Previously considered location in Woodbury has moved to the NW quadrant
- 2015 site option review: 7 locations were considered and 4 short listed
- New express bus service to downtown Minneapolis

Lake Elmo Site – Site Details



- 6.4 Acres
- 550 Parking Stalls
- Site access for public will be from Hudson Blvd.
- Access for buses will be from Hudson Blvd. and Manning Ave.
- Anticipating 5 daily trips for express buses
- Accommodates future Gold Line Station

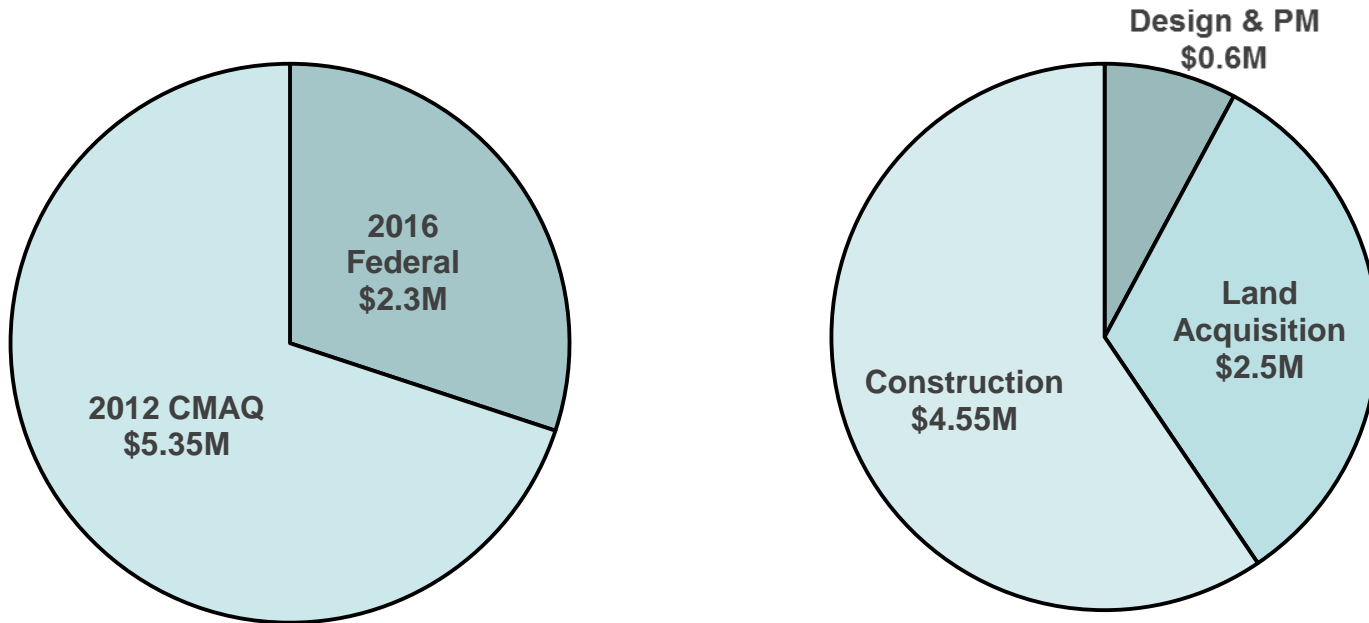
Gold Line



TAC Recommended Alignments

- Lake Elmo location aligns with Gateway Transitway planning process and locally preferred alternative (LPA)
 - Metropolitan Council's 2040 Transportation Policy Plan identifies the Gateway corridor LPA as the first dedicated Bus Rapid Transitway to be included in the plan
- Gateway TAC meeting (7/15), the group recommended Start / End in Lake Elmo for the eastern end of the corridor.
 - This recommendation would make our I-94 / Manning Park & Ride the planned end-of-the-line station. Both Lake Elmo and Woodbury support the recommendation.

Funding and Budget Plan



Schedule



Questions?