

2015 Third Quarter Regional Ridership Report

Transportation Committee
November 23, 2015

3rd Quarter 2015 to 2014 Comparison by Provider

<u>Provider</u>	<u>Rides</u>	<u>% Change</u>
Metro Transit	22.1 M*	- 2.8%
MTS - Contracted	1.32 M	- 0.6%
Suburban Providers	1.37 M	0.3%
University of MN	585,000	10.7 %
	-----	-----
Total	25.4 M	-2.2%

* Excludes 198,772 Maple Grove contracted rides

3rd Quarter 2015 to 2014 Average Weekday Ridership by Provider

<u>Provider</u>	<u>Average Weekday Rides</u>	<u>% Change</u>
Metro Transit	275,503*	-2.7%
MTS - Contracted	18,363	-1.6%
Suburban Providers	19,932	1.6%
University of MN	9,022	12.4%
	-----	-----
Total	322,821	-2.0%

* Excludes Maple Grove contracted rides

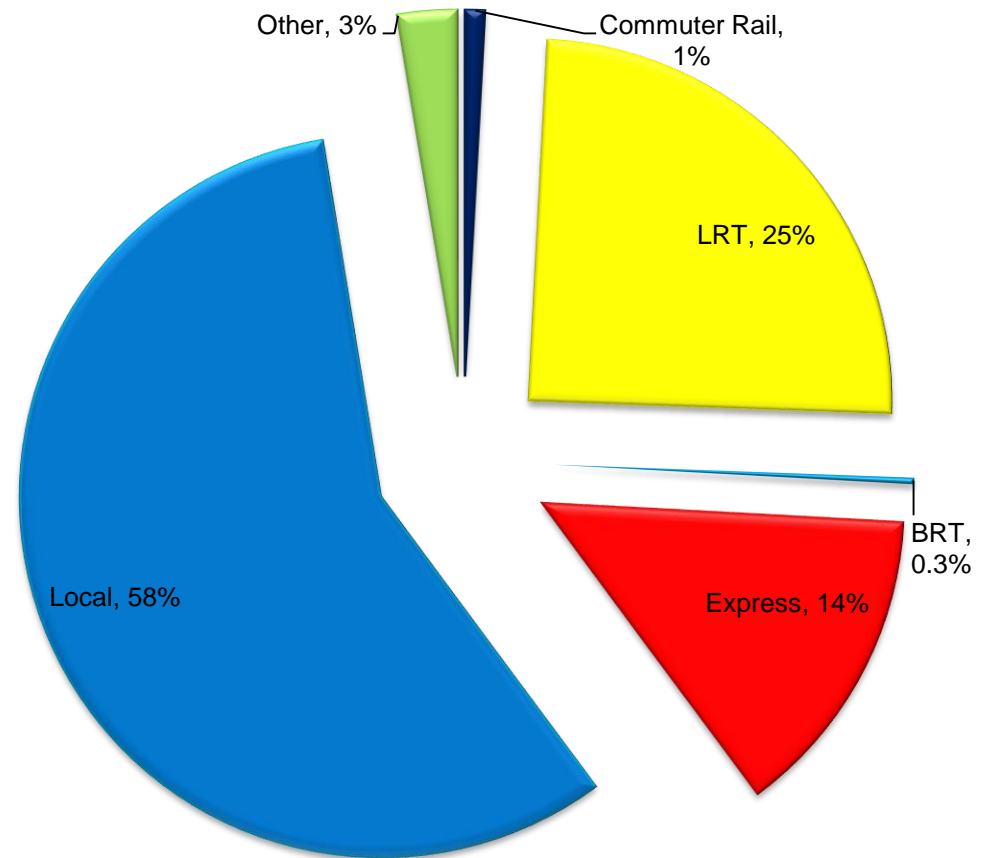
Year to Date 2015 to 2014 Average Weekday Ridership by Provider

<u>Provider</u>	<u>Average Weekday Rides</u>	<u>% Change</u>
Metro Transit	273,183*	2.6%
MTS - Contracted	18,335	-6.3%
Suburban Providers	19,539	-0.2%
University of MN	11,542	0.6%
	-----	-----
Total	322,600	1.8%

* Excludes Maple Grove contracted rides

3rd Quarter 2015 by Service Type

- Commuter Rail - .21 M
 - LRT – 6.3 M
 - Express Bus – 3.6 M
 - BRT– 72,335
 - Local Bus– 14.6 M
 - Other* – .65 M
- Total – 25.4 M**



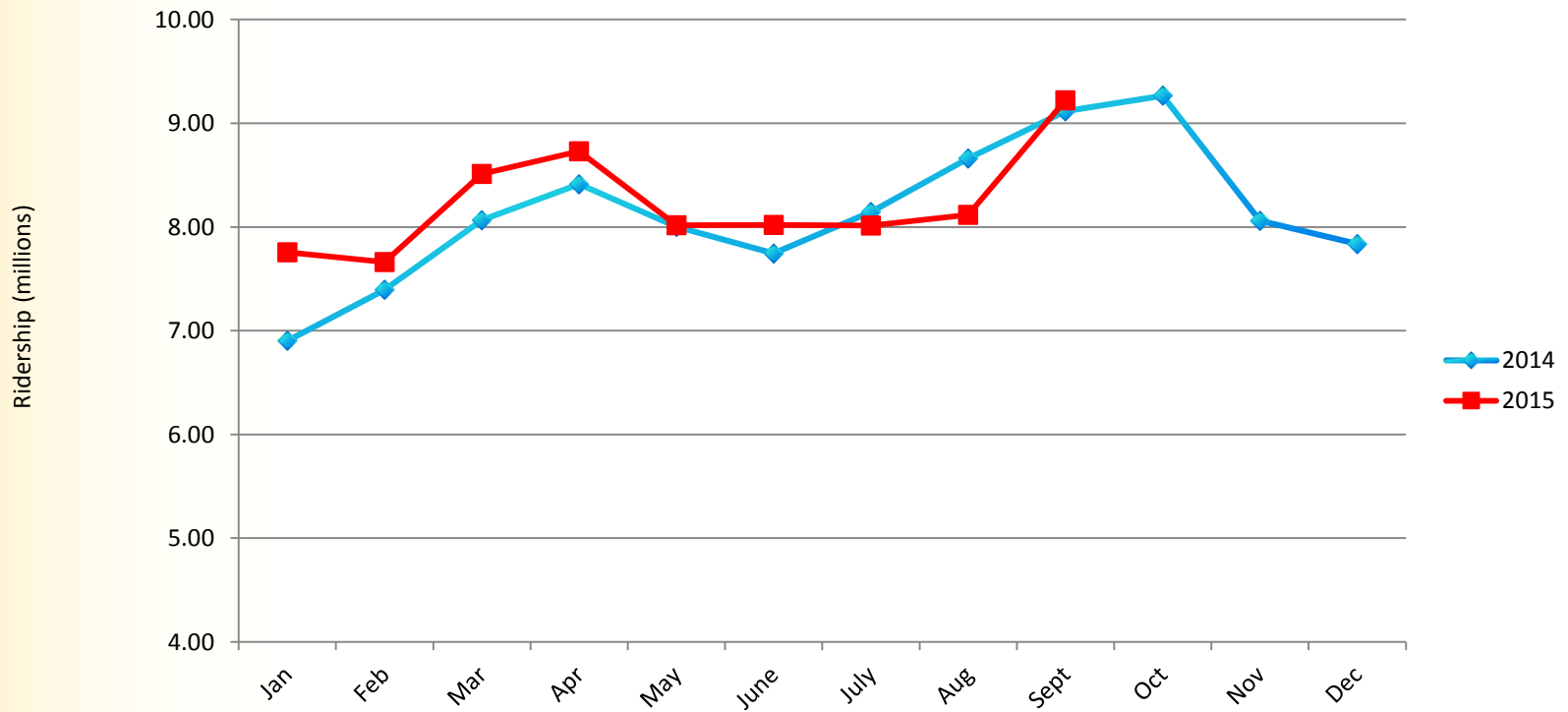
* Dial-a-Ride, Metro Mobility, Vanpool

3rd Quarter 2015 to 2014 Comparison by Service Type

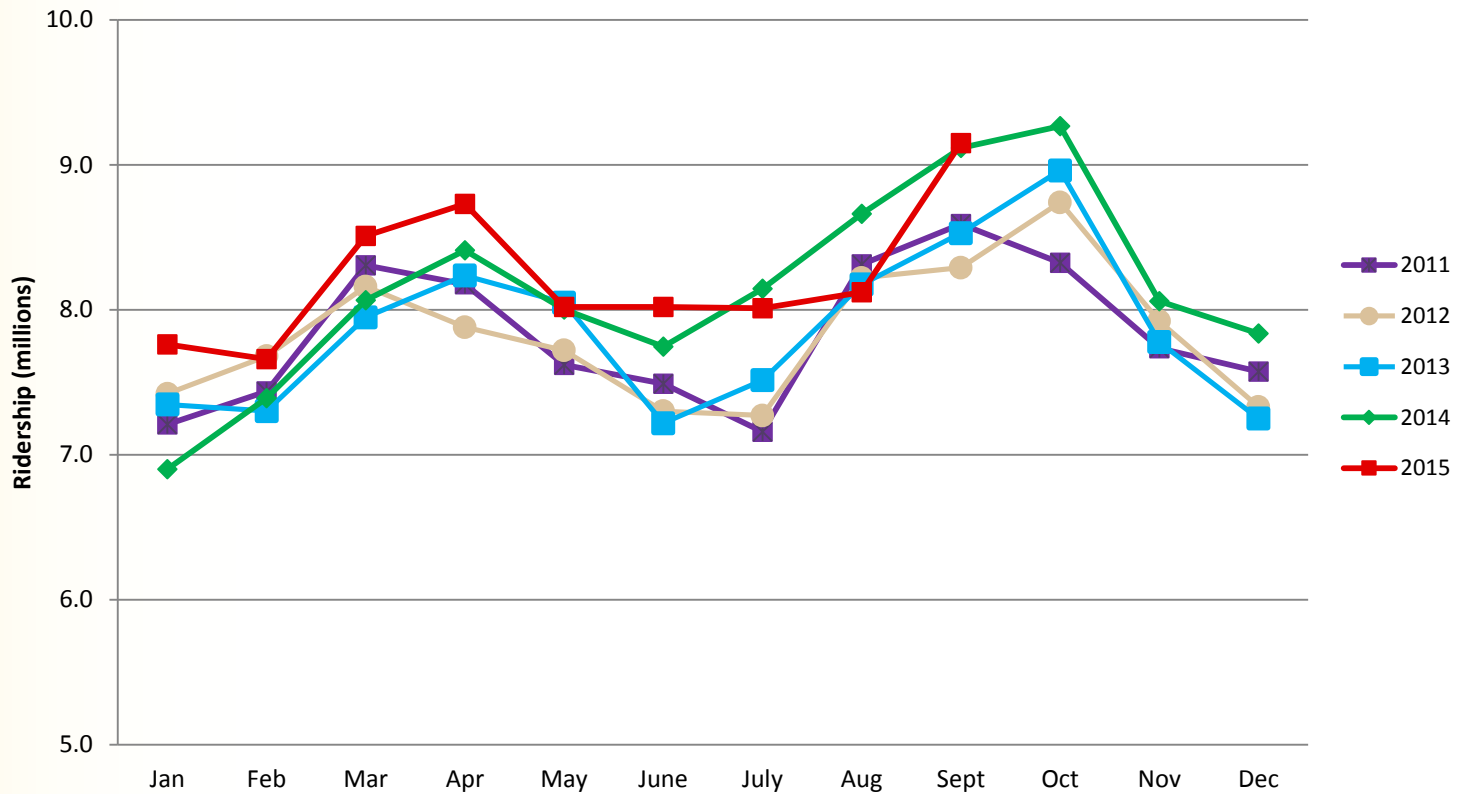
<u>Type of Service</u>	<u>% Change</u>
Commuter Rail	- 0.9%
LRT	11.2%*
BRT	- 8.7%
Express Bus	- 0.2%
Local Bus	- 7.6%
Dial-A-Ride	- 5.4%
Metro Mobility	2.9%
Metro Vanpool	- 4.5%

* Green Line started operations June 2014

2015 - 2014 Monthly Comparison



2015-2011 Monthly Comparison



2015 Third Quarter Regional Ridership Report

Questions