

2015 Year End Regional Ridership Report

Transportation Committee
February 8, 2016

Annual 2015 to 2014 Comparison by Provider

<u>Provider</u>	<u>Rides</u>	<u>% Change</u>
Metro Transit	85.0 M*	1.5%
MTS - Contracted	5.3 M	-3.1%
Suburban Providers	5.1 M	-0.7%
University of MN	3.3 M	4.1%
	-----	-----
Total	98.8 M	1.2%

* Excludes 790,416 Maple Grove contracted rides

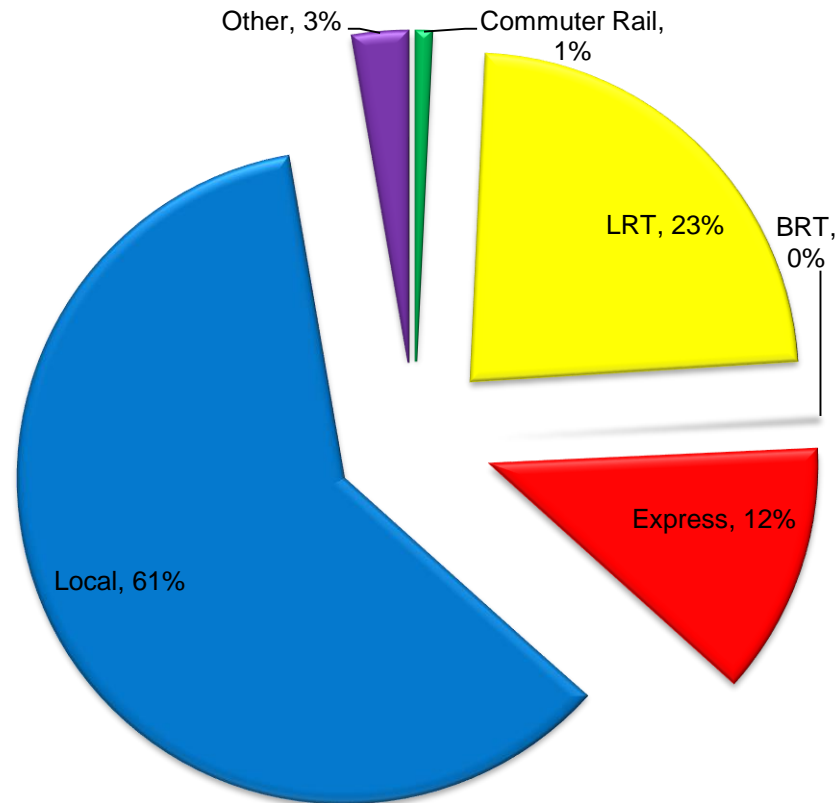
Annual 2015 to 2014 Average Weekday Ridership by Provider

<u>Provider</u>	<u>Average Weekday Rides</u>	<u>% Change</u>
Metro Transit	273,284*	1.3%
MTS - Contracted	18,512	-5.5%
Suburban Providers	19,578	-0.7%
University of MN	12,940	3.7%
	-----	-----
Total	324,314	0.8%

*Excludes Maple Grove contracted rides

2015 by Service Type

- Commuter Rail - .72 M
 - LRT – 23.0 M
 - Express Bus – 12.2 M
 - BRT– 265,410
 - Local Bus– 59.9 M
 - Other* – 2.7 M
- Total – 98.8 M**



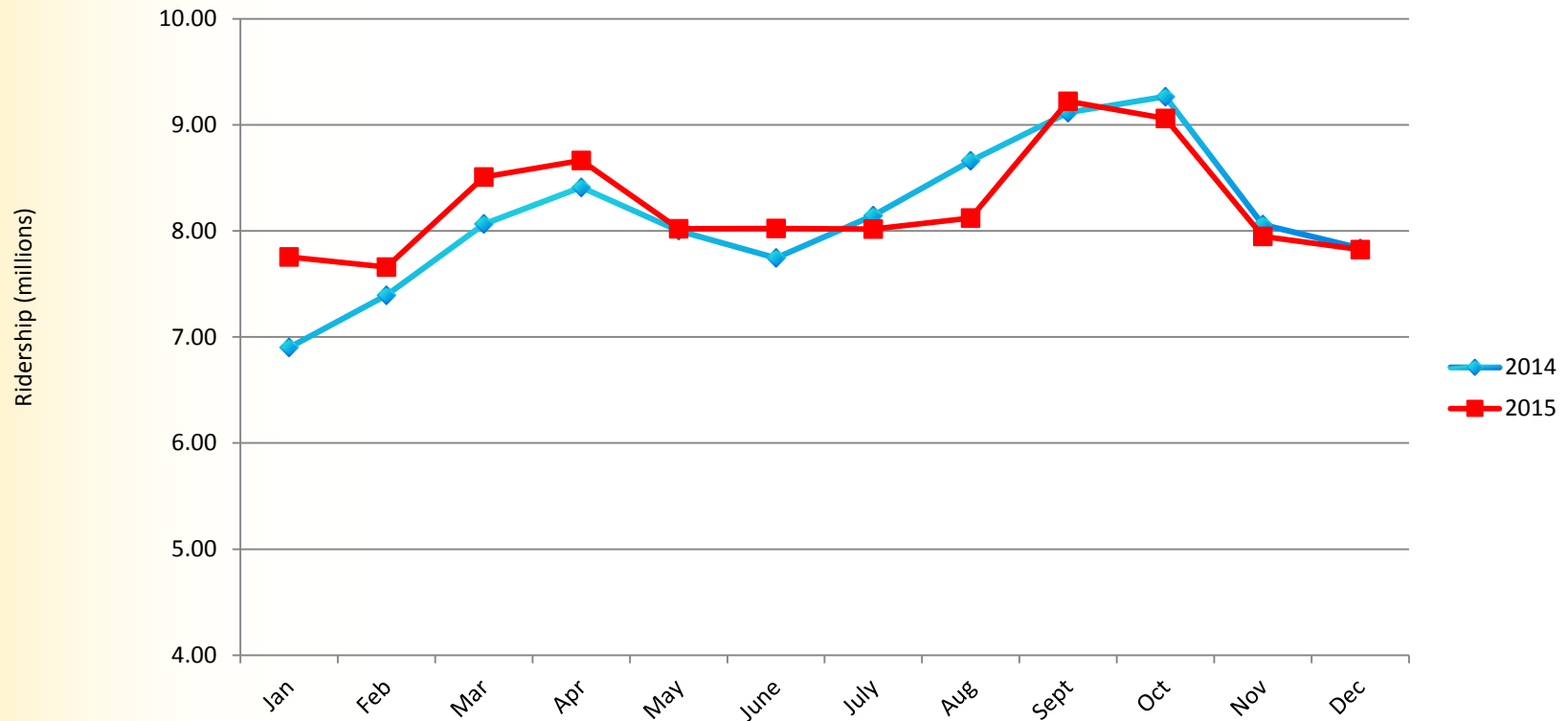
* Dial-a-Ride, Metro Mobility, Vanpool

Annual 2015 to 2014 Comparison by Service Type

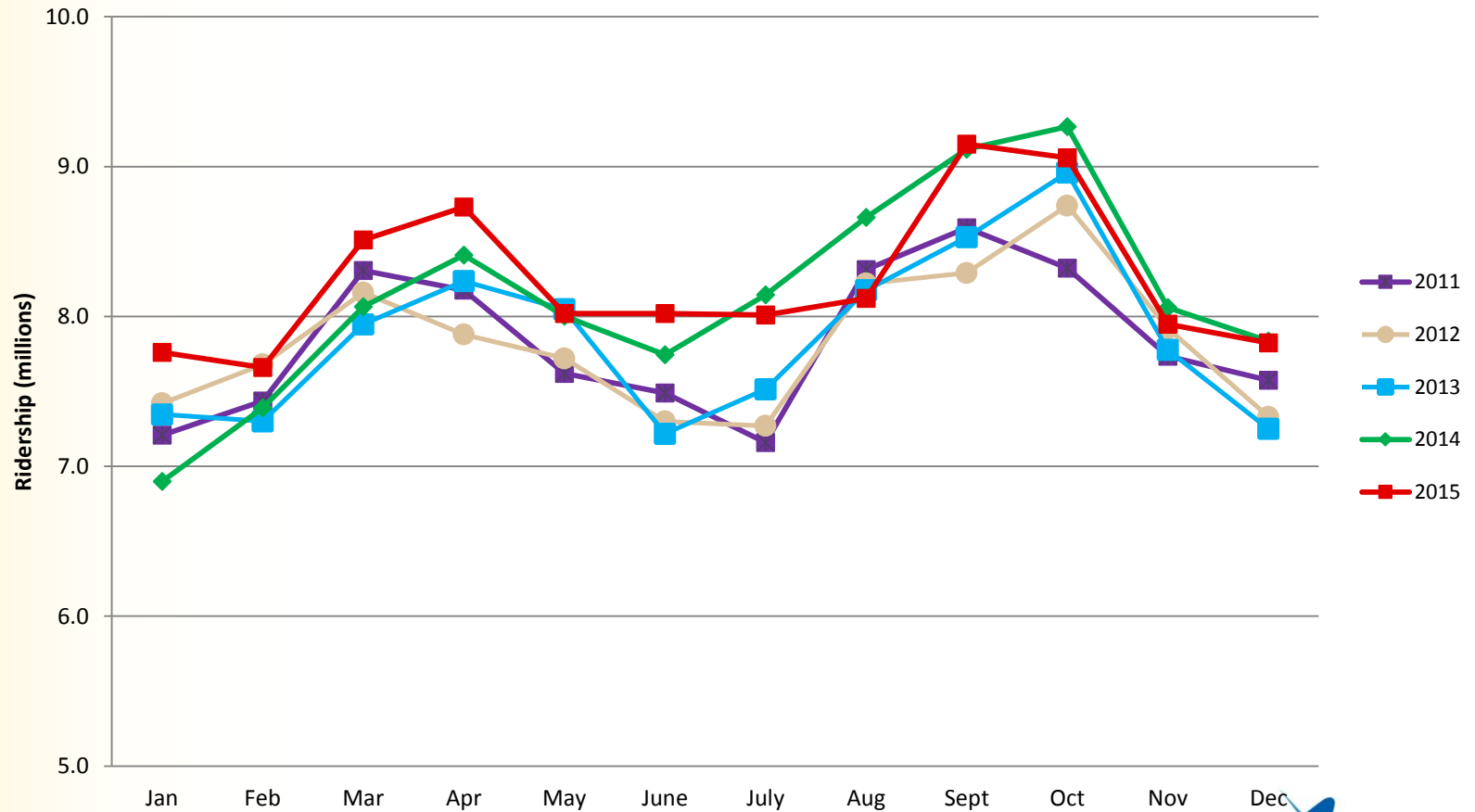
<u>Type of Service</u>	<u>% Change</u>
Commuter Rail	0.2%
LRT	43.8%*
BRT	-0.03%
Express Bus	-4.5%
Local Bus	-8.2%
Dial-A-Ride	-0.2%
Metro Mobility	6.8%
Metro Vanpool	-6.3%

* First full year Green Line operations

2015 - 2014 Monthly Comparison



2015-2011 Monthly Comparison



2015 Year End Regional Ridership Report

Questions