

# West End & Route 9 Concept Plan

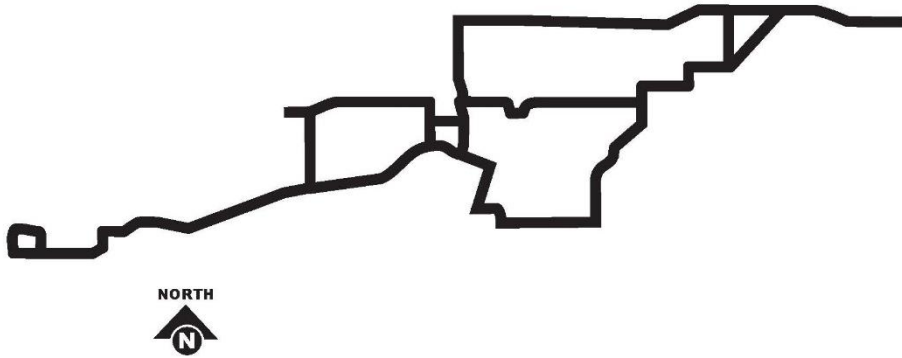


Steve Mahowald, Senior Transit Planner

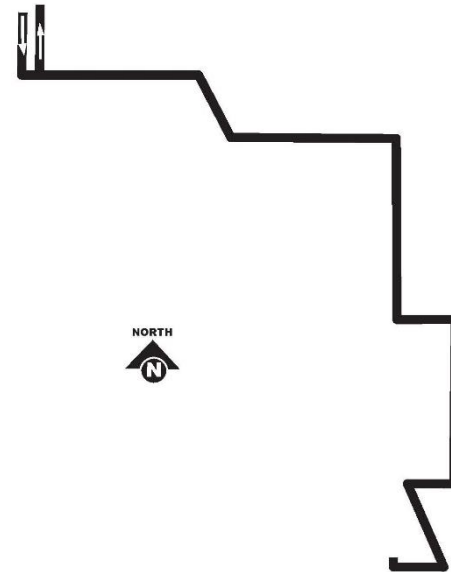
- Simplify route structure, easier for customer to understand
  - Reduce complicated branches on Route 9
- Improve schedule reliability
- Better serve growing jobs, retail, restaurants in West End
  - Improve access from downtown Minneapolis
  - Improve access for areas of concentrated poverty
- Improve performance by eliminating low-ridership segments

Currently six branches west of Downtown

## 9 West Side



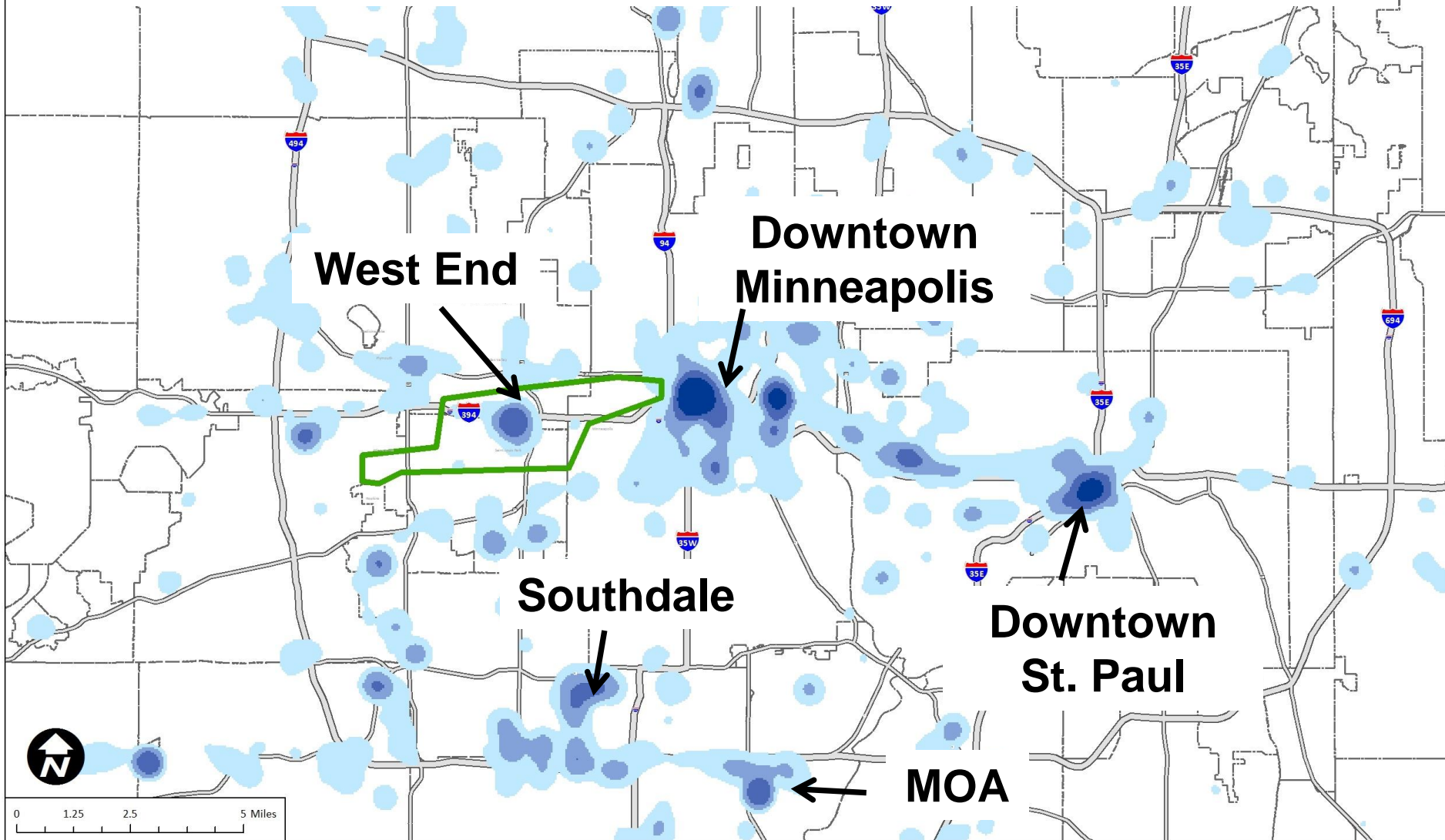
## 9 South End



# Improve Job Access



## Concentration of Jobs Paying <\$40,000/year



# 2016 Routes & Ridership



## West End and Route 9 Transit Study Study Area and Weekday Boardings by Stop

**9B Branch Glenwood**  
**< 4 riders/trip**

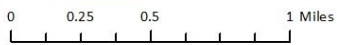
**649 Exp**

**9H Branch 26<sup>th</sup> St**  
**< 3 riders/trip**

**Boardings per Weekday**

*Fall 2015 Data*

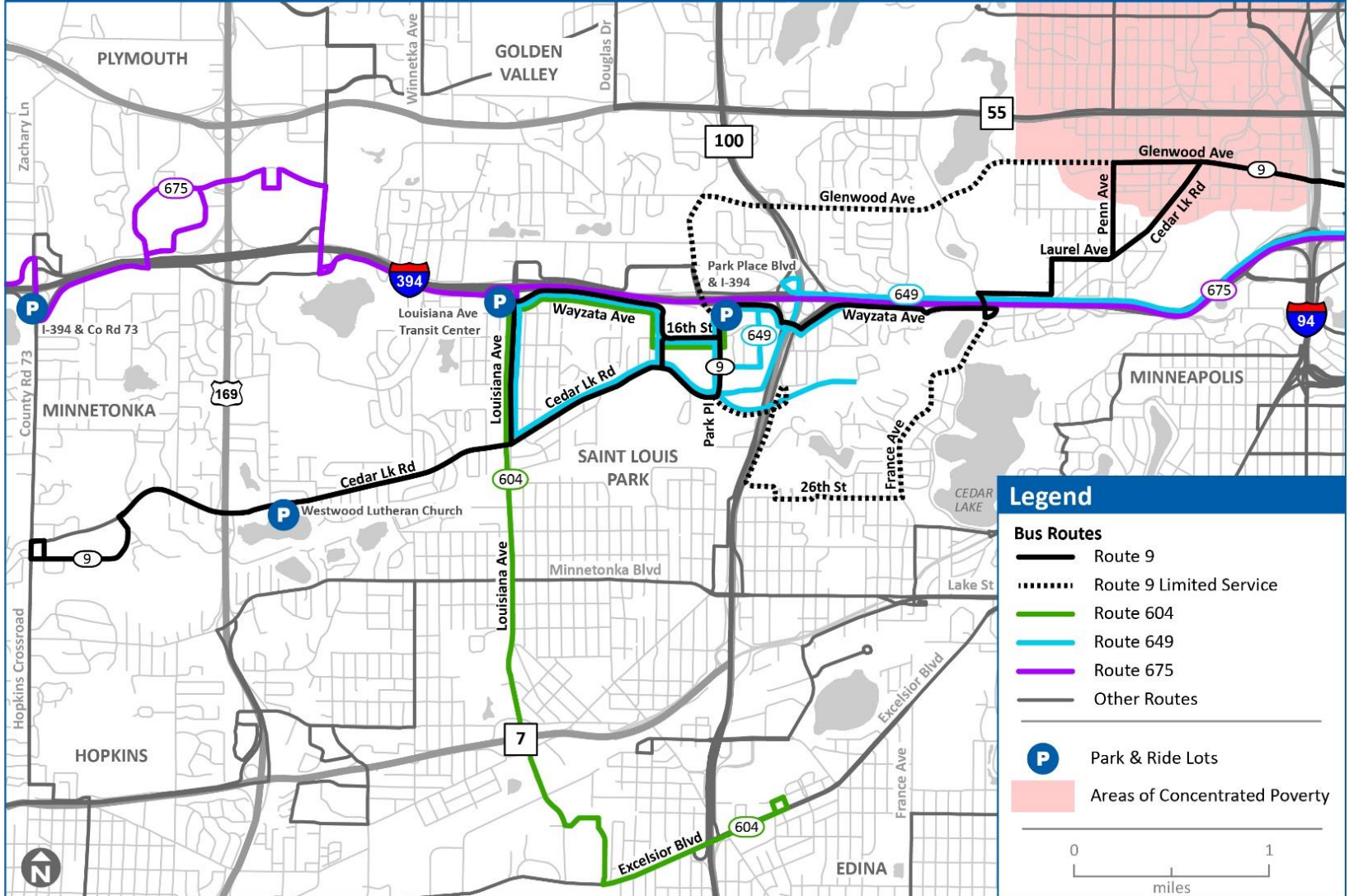
- Less than 1
- 1 - 5
- 6 - 10
- 11 - 25
- 26 - 50
- More than 50
- ▭ Study Area



# Concept Plan



## West End and Route 9 Transit Study



- Weekday
  - 7% increase in platform hours (from 217 to 233)
  - Decrease in peak buses (from 20 to 18)
- Saturday
  - 5% increase in platform hours (from 120 to 126)
  - No change in buses
- Sunday
  - No change in platform hours or buses

- Concept Plan to Transportation Committee June 27<sup>th</sup>
  - Full Council July 13<sup>th</sup>
- Outreach and Public Engagement
  - Public Hearing September 8<sup>th</sup> at Harrison Education Center from 4:30-6:00pm
  - Open House September 10<sup>th</sup> ICON Theatres community room from 1:00-2:30pm
  - Comment period ends September 19
- Final Plan to Transportation Committee October 24<sup>th</sup>
  - Full Council November 9<sup>th</sup>
- Implementation March 2017



- That the Metropolitan Council approve the West End and Route 9 Transit Study Concept Plan for public review