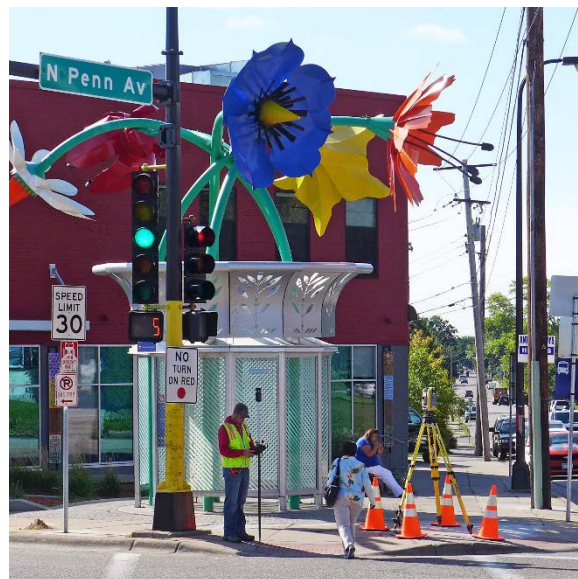


C Line

Long-Term Glenwood Realignment Study



Katie Roth, Project Manager
Scott Janowiak, Planner
BRT/Small Starts Project Office

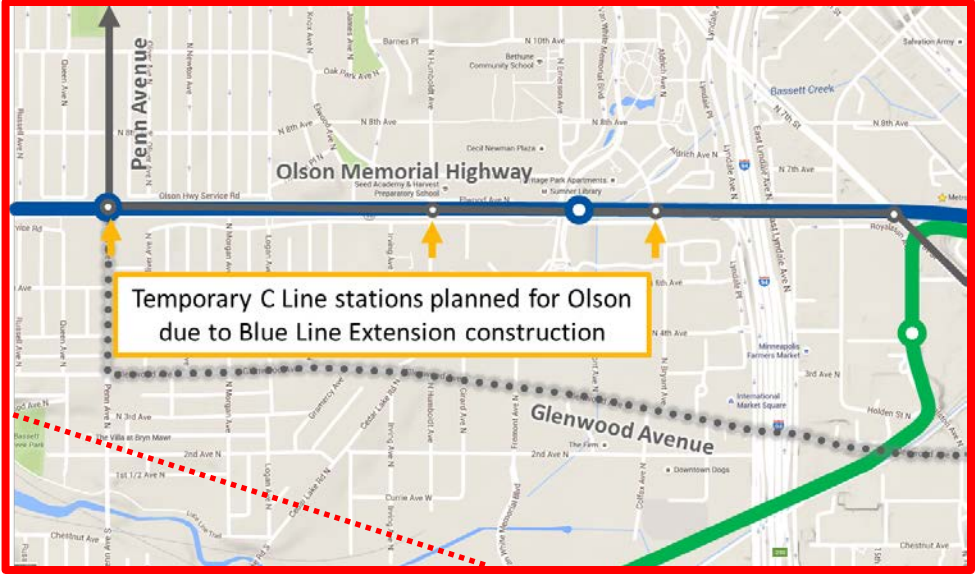
Transportation Committee
September 26, 2016

Temporary Stations on Olson Memorial Highway

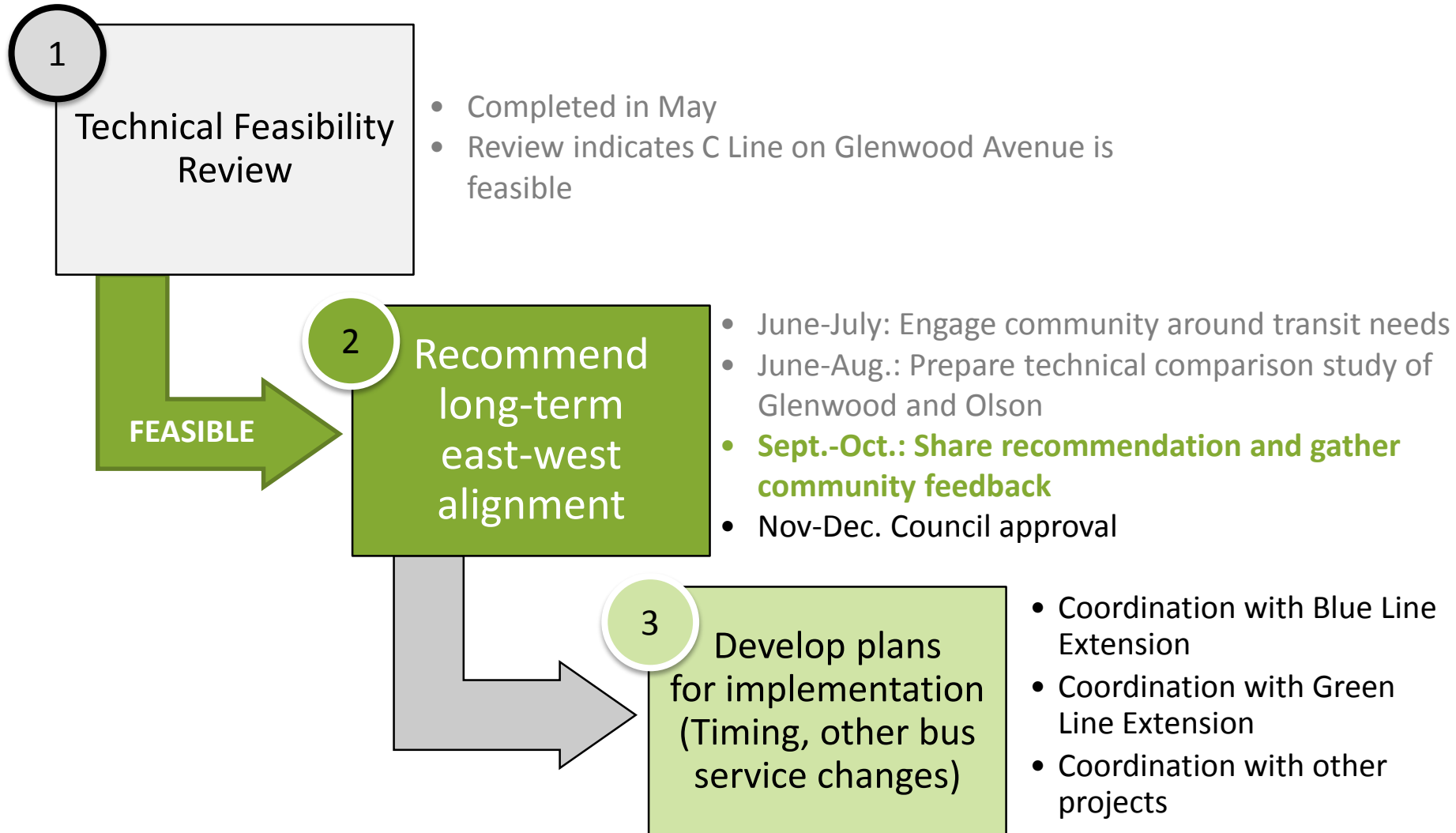


Final Station Plan
Updated April 5, 2016

- Construction will impact stations
- Community interest in exploring alternatives to Olson Highway for C Line



Glenwood Avenue: Long-Term Alignment Study



Alignments under study

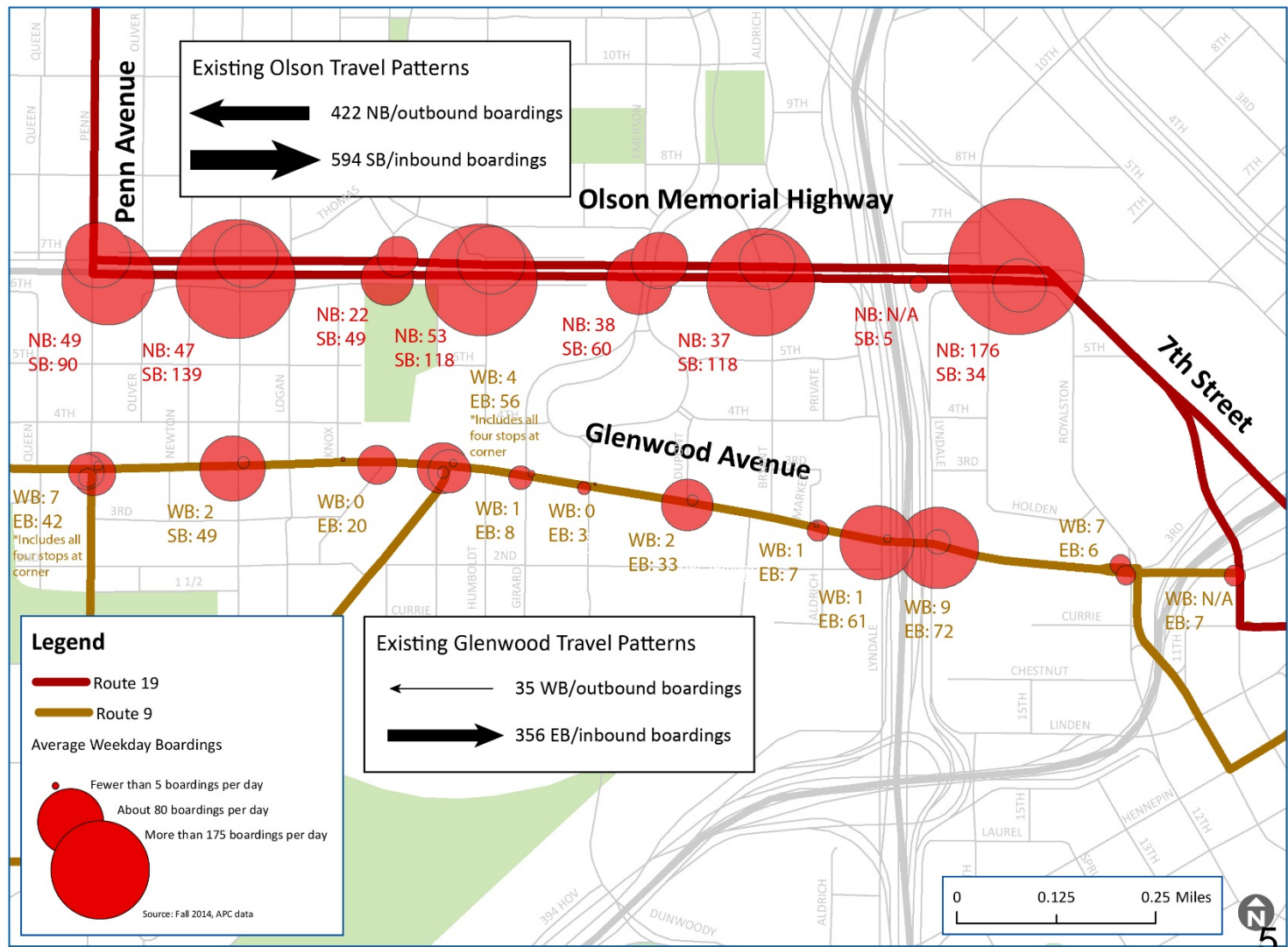


- Glenwood Station Plan process has not been initiated
- Preliminary stations based on major connections, ridership

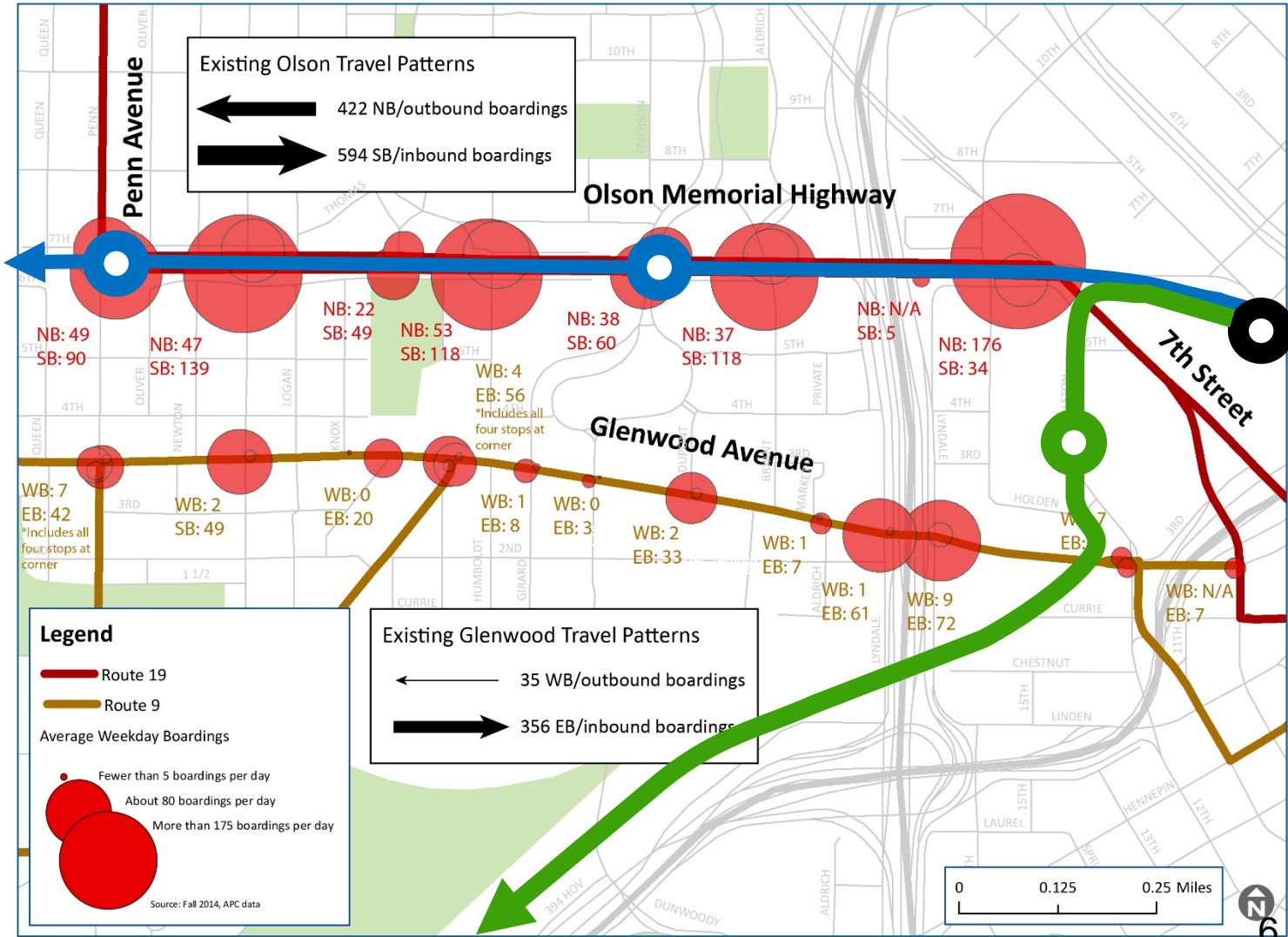
Service & demand today

Service Frequency

	Route 19	Route 9
Rush Hours	8-10	20
Midday	10	30
Evening	15-20	30
Owl	60	--
Sat/Sun	15	30



Planning for future changes



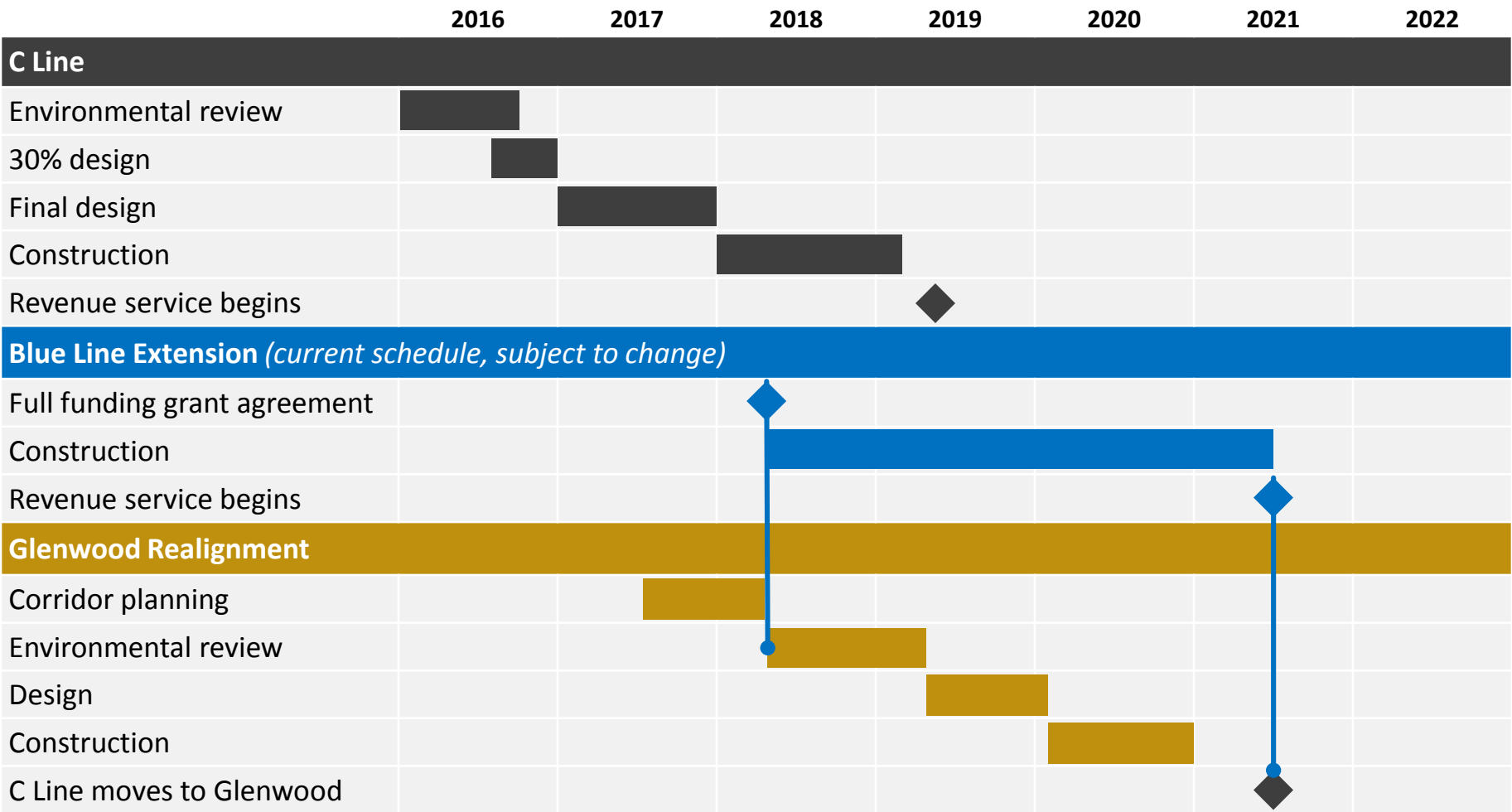
Key evaluated factors

	Olson	Glenwood
Population served	☑	☑
Travel time	☑	☑
Connections to LRT	☑	☑
Support economic development	☑	☑
Current ridership demand	☑	
Potential future ridership demand		☑
Future transitway network coverage		☑
Community support	TBD	TBD

Study recommendations

- The C Line will serve Olson Memorial Highway from its opening day until the Blue Line Extension is in service and Glenwood stations are completed.
- The C Line will be realigned to Glenwood Avenue once the Blue Line Extension is in service and Glenwood stations are completed.
- Project development for the Glenwood Alignment will begin following execution of a Full Funding Grant Agreement for the Blue Line Extension.

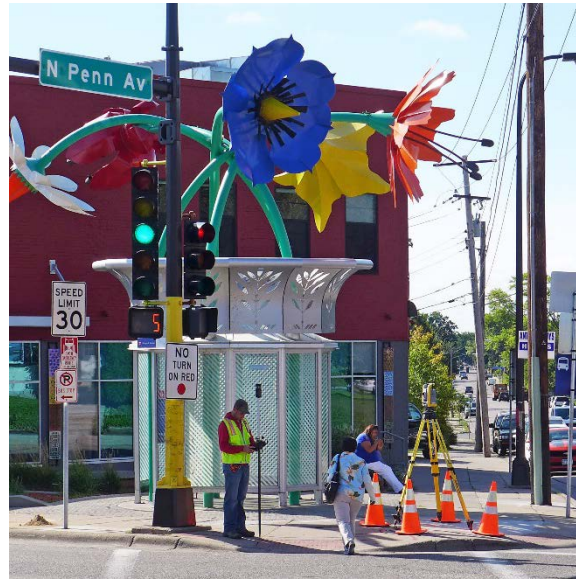
Implementation schedule



Upcoming engagement process

- October: Share recommendation and gather feedback
 - Open house: October 18, 6:00–7:30 p.m.
Harrison Education Center
 - Neighborhood organization discussions
 - Pop-up bus stop outreach, on-board customer outreach
 - Agency stakeholder feedback
- November: Present recommendation for Committee action to approve
- December: Present recommendation for Council action to approve

metrotransit.org/c-line-project



Katie Roth, Project Manager
612-349-7772 | katie.roth@metrotransit.org
Scott Janowiak, Planner
612-341-5733 | scott.janowiak@metrotransit.org
BRT/Small Starts Project Office