



2016 Annual Regional Park-and-Ride System Survey

Transportation Committee Meeting
January 23, 2017

Anna Flintoft and Rachel Auerbach
Engineering & Facilities
Metro Transit



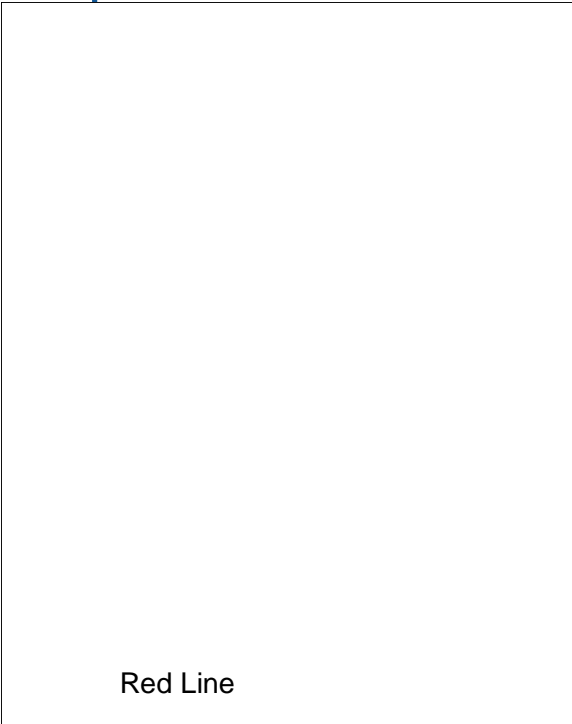
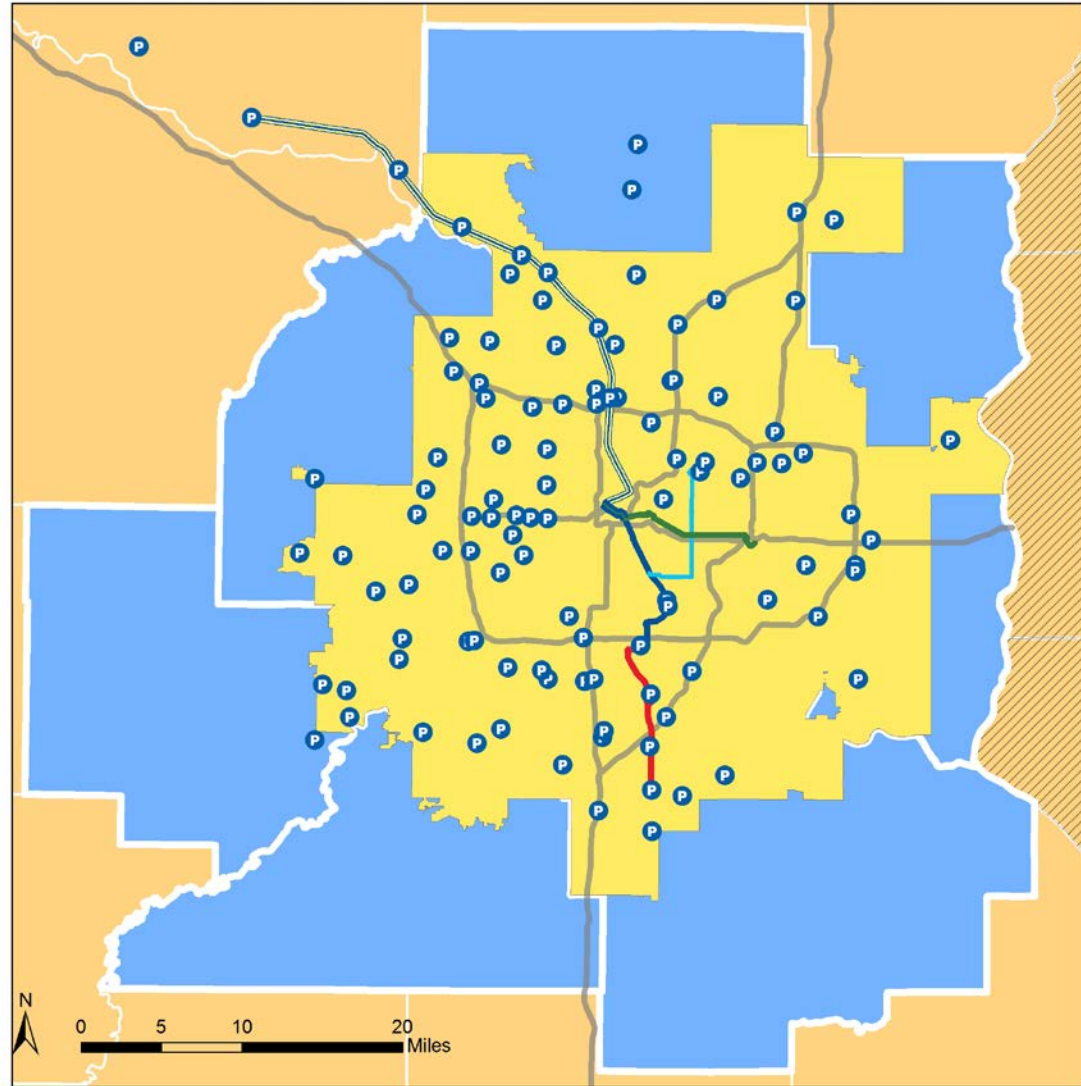
2016 Park-and-Ride Survey

- Regional partnership
- Count usage (vehicle and bicycle) and record license plates at 109 park-and-ride and 43 park-and-pool facilities
- Information used to manage and plan facilities



2016 Regional Park-and-Ride System

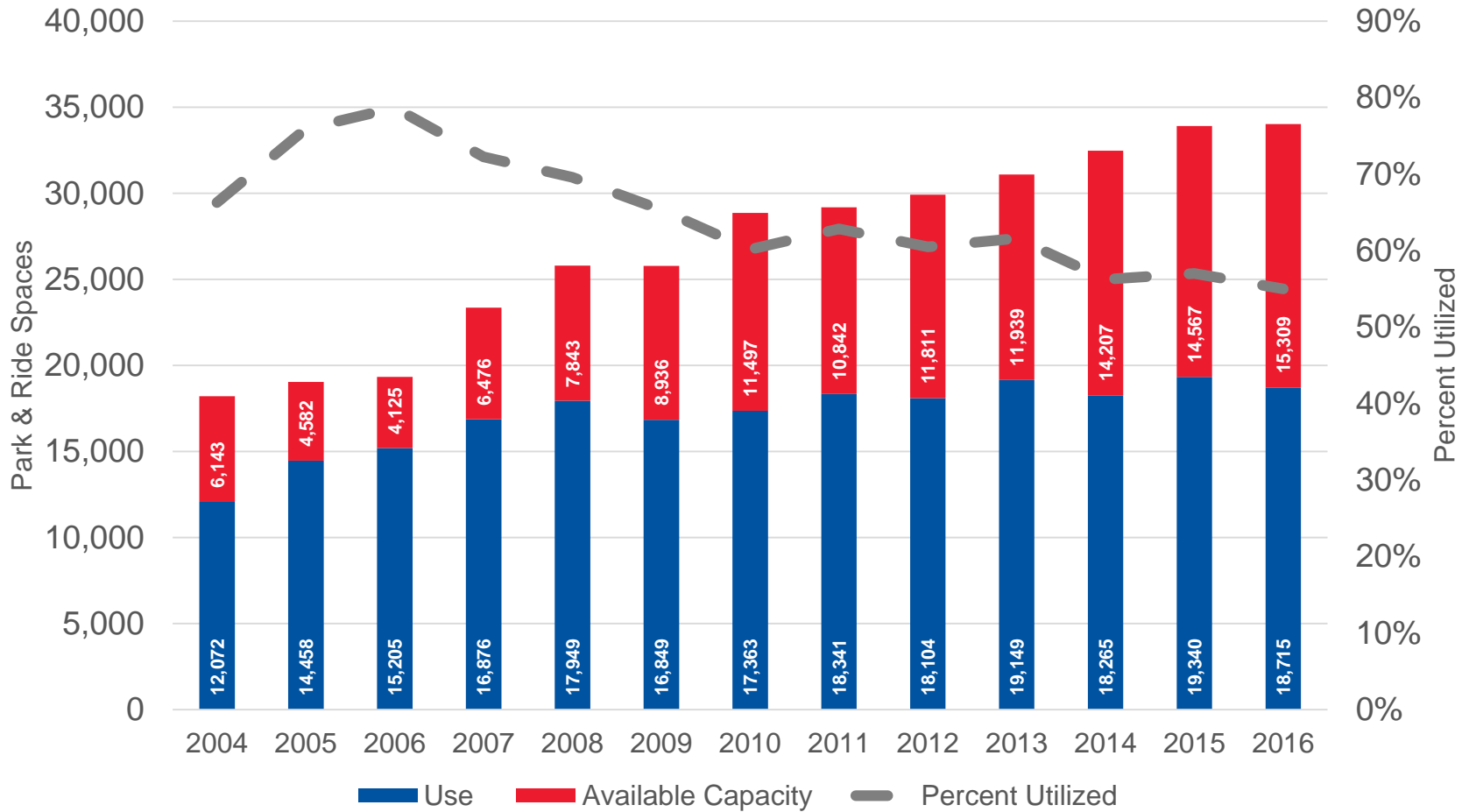
- 109 park-and-rides
 - 76 with ≥ 100 spaces
- Primarily suburban express bus service



Red Line



Annual P&R Usage 2004 –2016

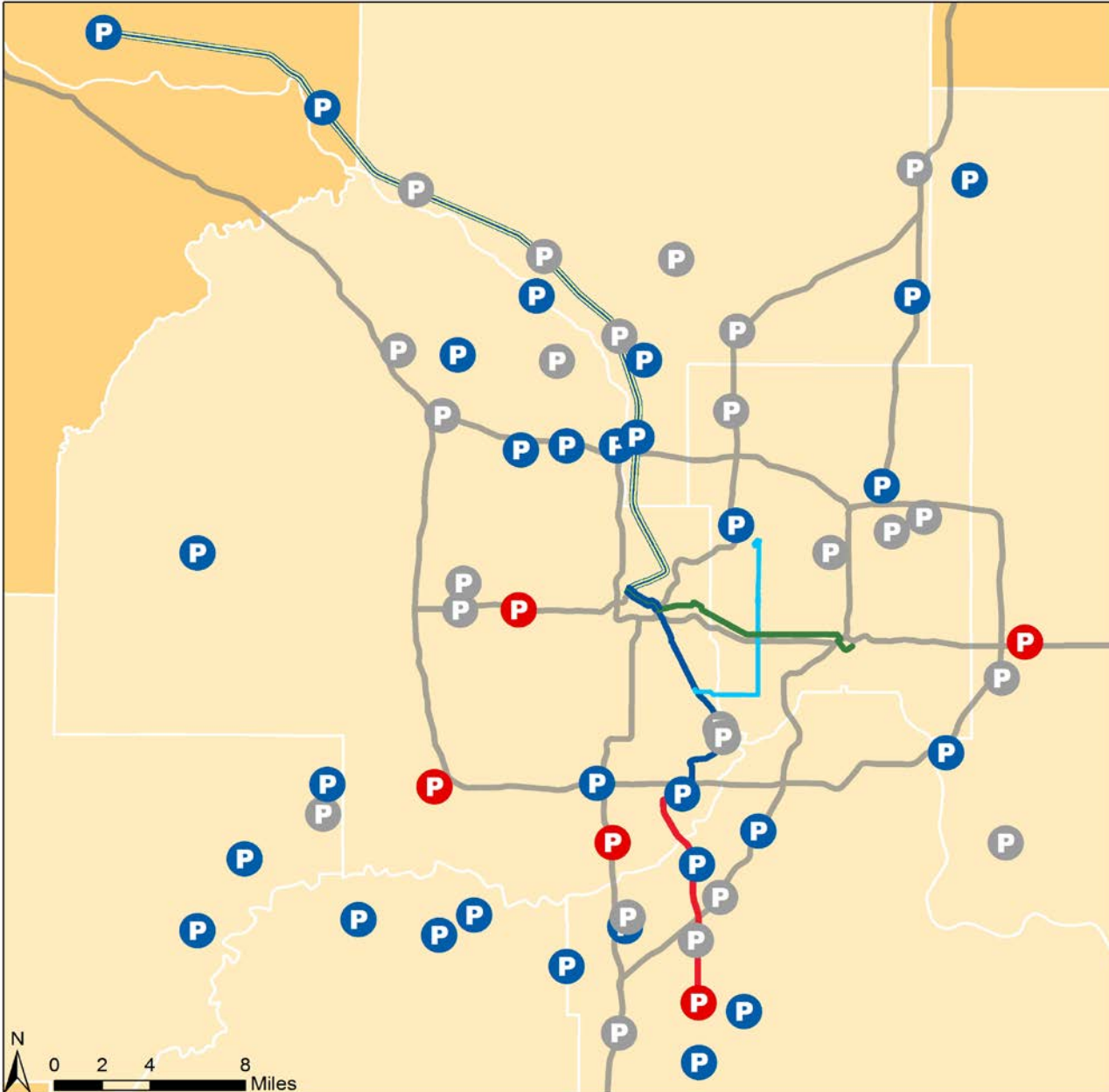


2016 Changes in System Capacity

| New or Expanded Facilities | Capacity Change | Old Capacity | New Capacity |
|----------------------------------------------------|-----------------|--------------|--------------|
| 28th Avenue Station (corrected capacity) | +215 | 1383 | 1598 |
| Southdale Transit Station (expansion in 2013-2014) | +45 | 102 | 147 |
| Maplewood Mall Transit Center (corrected capacity) | +7 | 1000 | 1007 |
| Anoka Station (expansion in 2014) | +148 | 377 | 525 |
| Olive Lane (relocated) | +5 | 95 | 100 |
| Dunkirk (new facility) | +50 | 0 | 50 |
| Hmong Alliance Church (closed) | -110 | 110 | 0 |
| Seagate Technology (closed) | -82 | 82 | 0 |
| Net Change in Total Capacity | +278 | | |

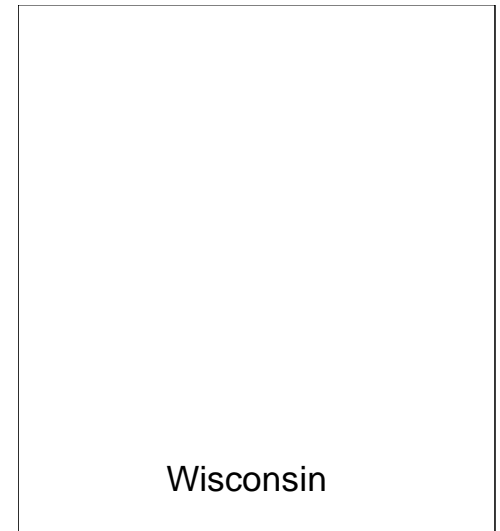
2015-2016 Largest Increases by Category

- Large Facilities (500+ spaces)
 - Maplewood Mall Transit Center (+119 users / 25% increase)
 - More frequent service to Downtown Minneapolis
- Medium Facilities (100 – 499 spaces)
 - Running Aces (+148 users / 157% increase)
 - Increase in frequency
- Small Facilities (<100 spaces)
 - Mermaid Supper Club (+21 users / 34% increase)
 - Popularity of Route 860 & school-gearred trips

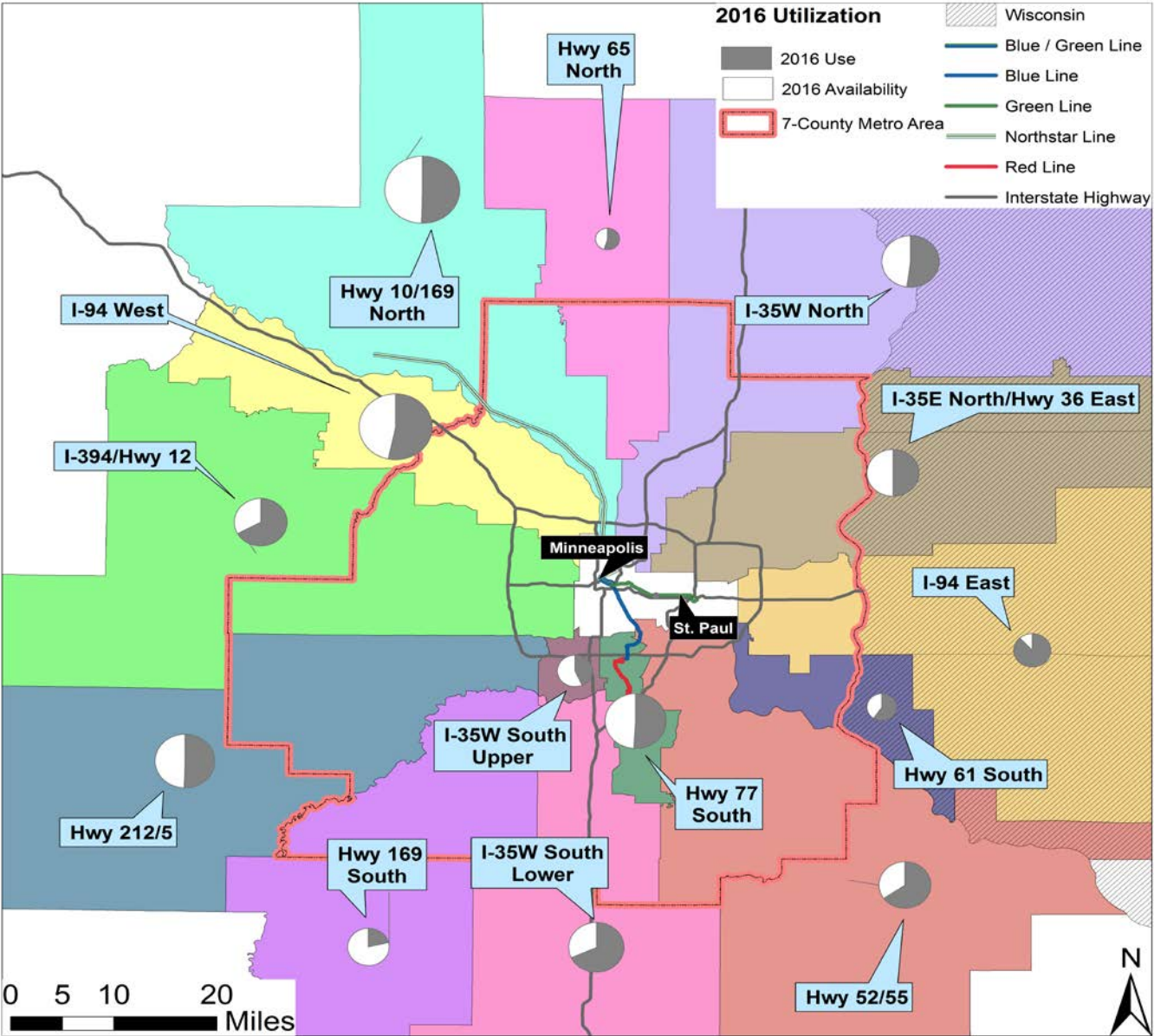


Most and Least Constrained Facilities

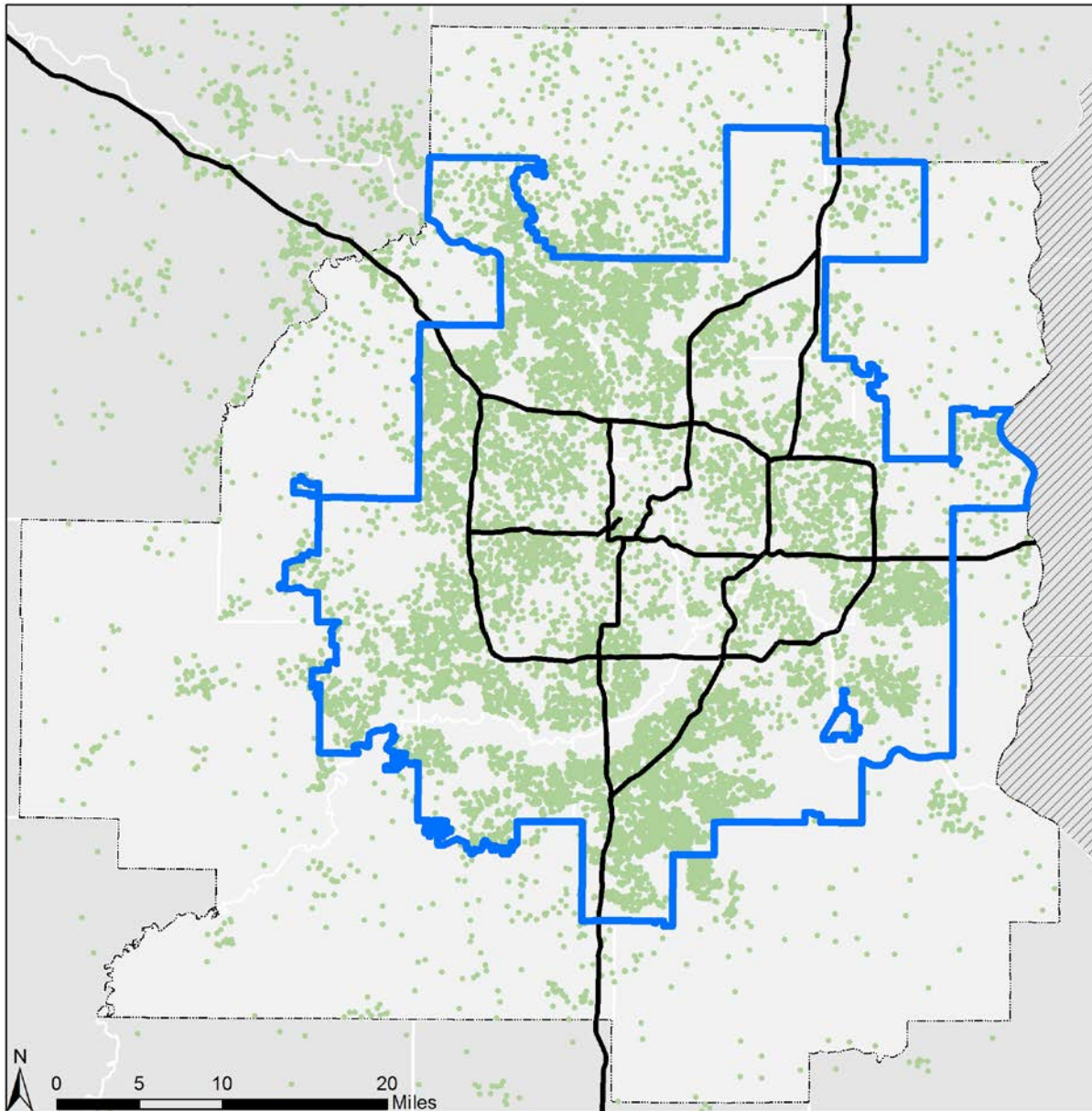
>150 space capacity






System Capacity and Usage by Travel Corridor



Park & Ride User Origins



| Origin Area | Percent of Users |
|-------------------------|------------------|
| 7-county Area Residents | 90.1% |
| TCLC Residents | 79.6% |

-  Interstate Highway
-  P&R Users
-  Transit Capital Levy Communities

Questions?



Full Report Available Online in the near future