



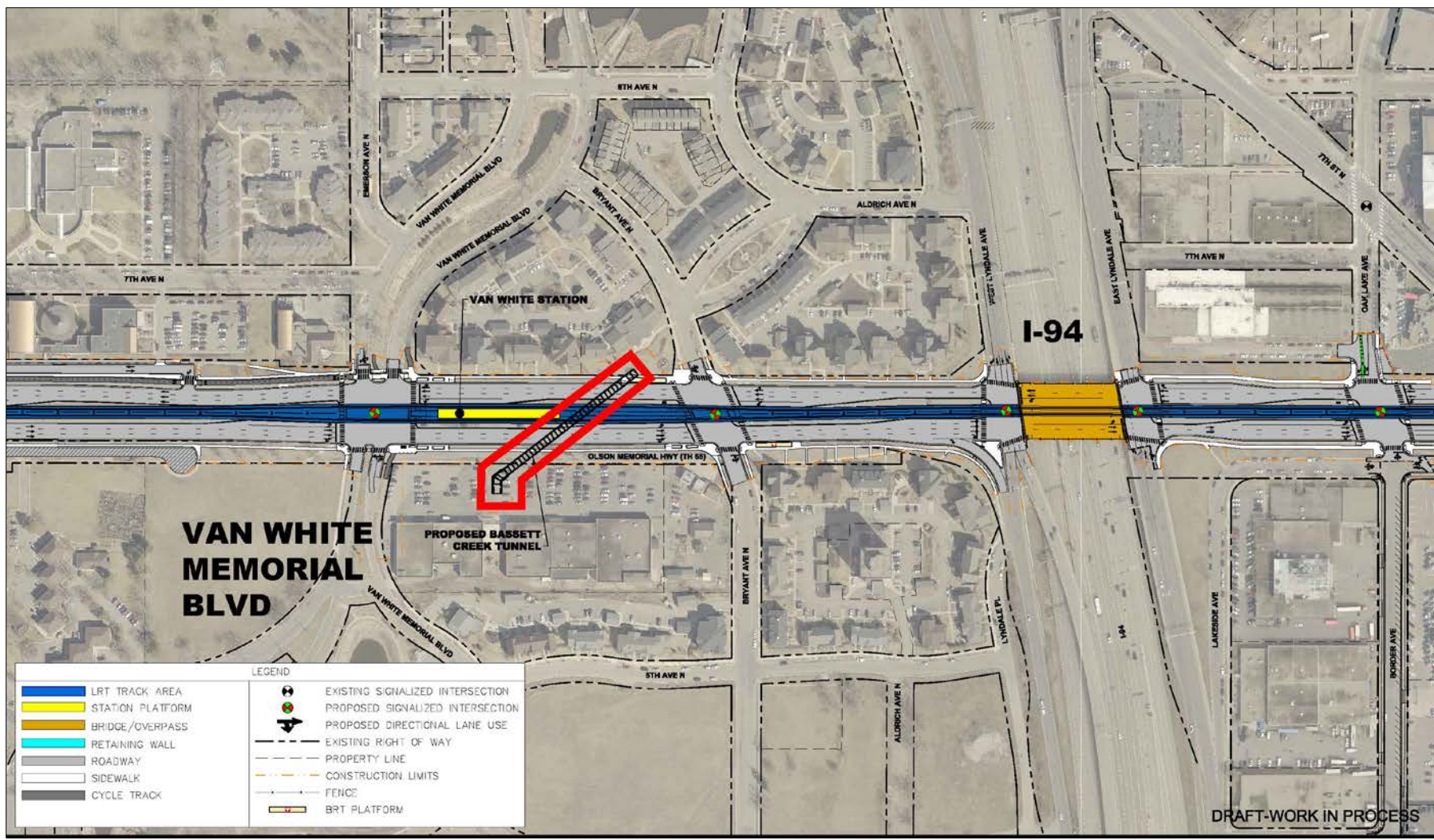
# Transportation Committee

## MnDOT SFA No. 4 – Bassett Creek Storm Sewer

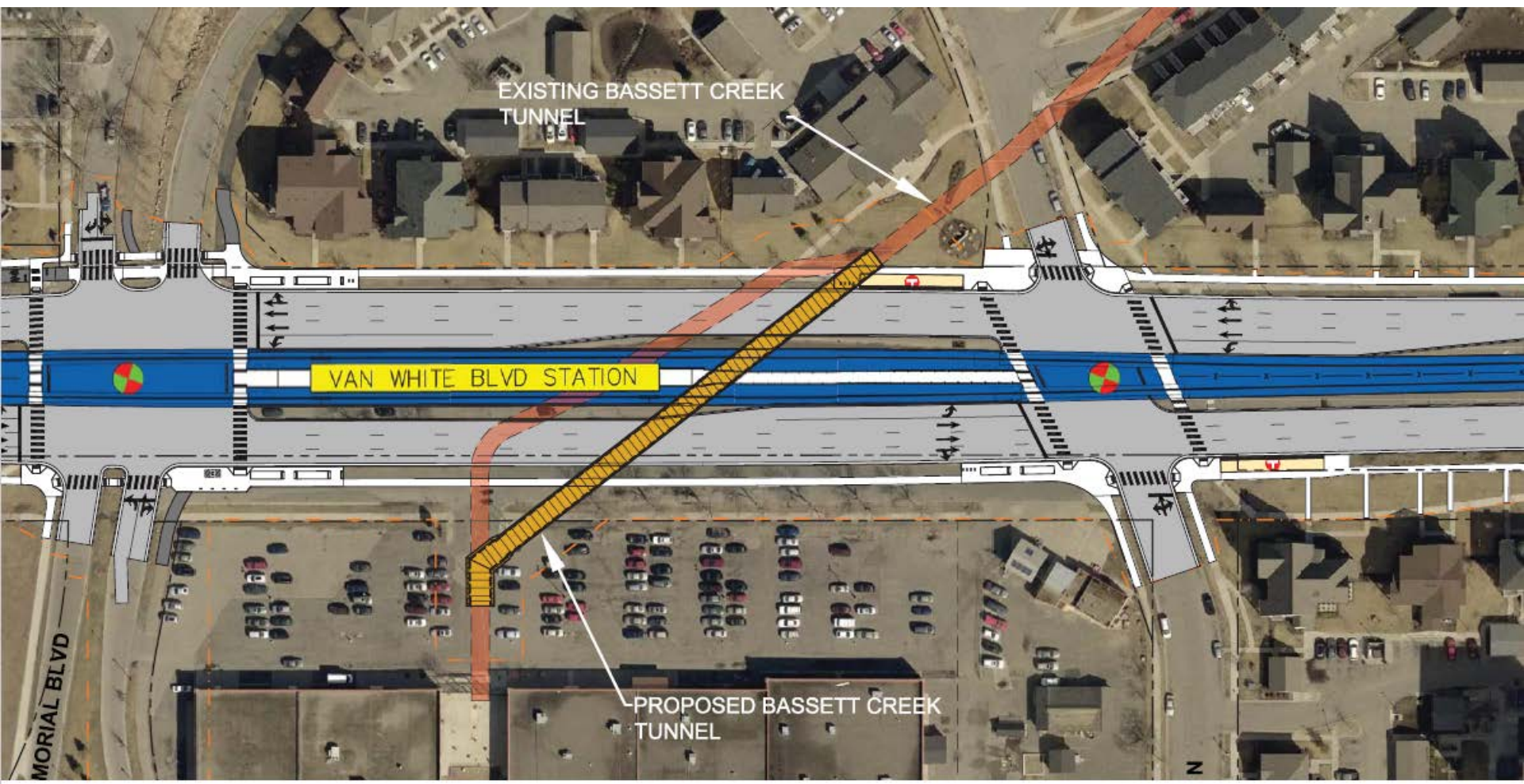
June 12, 2017



# Bassett Creek Storm Water Overview



# Bassett Creek Storm Water Overview



# MnDOT Funding:

- MnDOT has committed \$8.19M to project
- \$3.25M of \$8.19M established for relocation of the Bassett Creek Storm Sewer
- Funding available Fiscal Year 2019 (July 1, 2018)



# Proposed Action:

- Authorize the Regional Administrator to negotiate and execute Subordinate Funding Agreement No. 4 to the Master Funding Agreement with the Minnesota Department of Transportation (MnDOT) for Bassett Creek Storm Sewer Utility Relocation in an amount not to exceed \$3,250,000.00.



# More Information

The screenshot shows the Metropolitan Council website with a navigation menu at the top: About Us | News & Events | Data & Maps | Publications | Doing Business | Council Meetings | Contact Us | Employment. Below the menu is the Metropolitan Council logo and a secondary navigation bar with categories: COMMUNITIES, PARKS, TRANSPORTATION (highlighted), WASTEWATER & WATER, HOUSING, and PLANNING. The main content area features a photograph of a blue and yellow METRO bus at a station platform with passengers. Below the photo is a sidebar with a menu for 'METRO BLUE LINE EXTENSION' containing links for Route, Stations, Environmental, Timeline, and Project Partners. The main text area is titled 'METRO BLUE LINE EXTENSION' and 'Bottineau Transitway – Minneapolis & Northwestern Communities'. It contains a paragraph describing the LRT route from downtown Minneapolis through north Minneapolis, Golden Valley, Robbinsdale, Crystal, and Brooklyn Park. Below the text are two sections: 'Latest News' with a link to 'Feds: Met Council can begin designing METRO Blue Line Extension' and 'Route' with a link to 'Click on the map below for more information'.

Website: [BlueLineExt.org](http://BlueLineExt.org)

Email: [BlueLineExt@metrotransit.org](mailto:BlueLineExt@metrotransit.org)

Twitter: [@BlueLineExt](https://twitter.com/BlueLineExt)

