

35W@94: Downtown to Crosstown 2018 Transit Impacts & Mitigation

Transportation Committee

April 9, 2018

Dave Hanson, Assistant Director, Field Operations

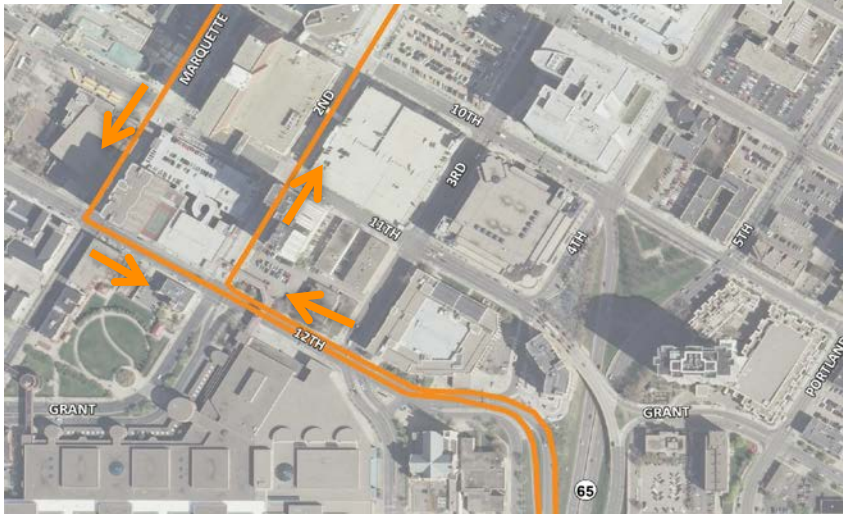
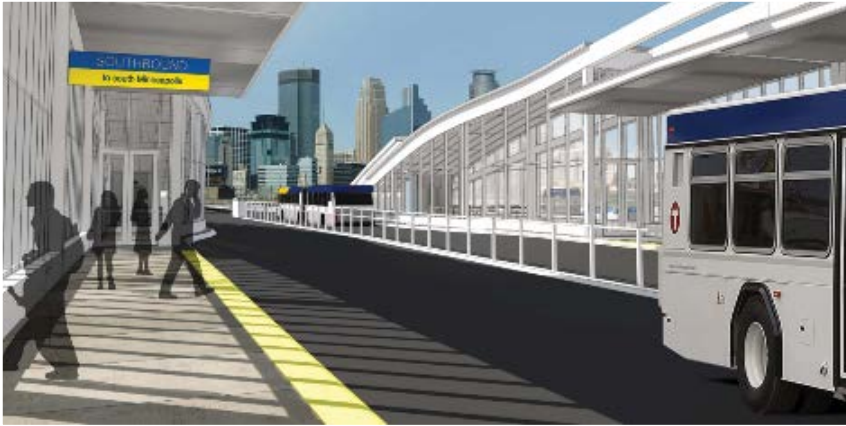
Kristin Thompson, Assistant Director, Service Development

35W@94: Downtown to Crosstown



- Project Limits: I-35W from I-94 to 43rd St
- Timeline: Summer 2017 to Fall 2021
- Partnership
 - MnDOT
 - Metro Transit
 - Hennepin County
 - City of Minneapolis
- Major transit corridor
 - Over 500 daily bus trips
 - 14,000 daily rides

35W@94: Transit Improvements

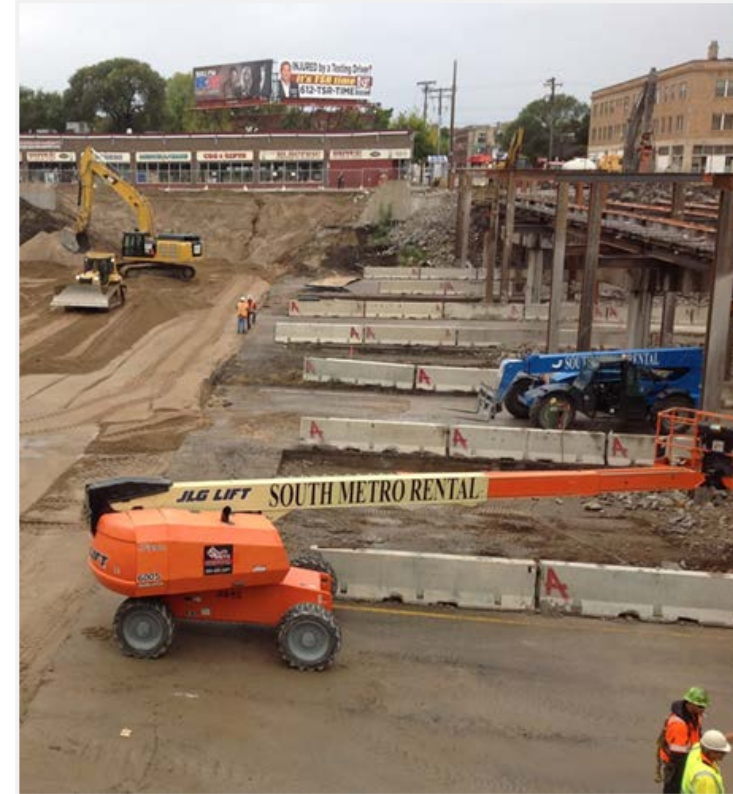


- Extended MnPASS lanes
- Orange Line project elements, including:
- Lake Street Station
 - Fully accessible two-level transit station at I-35W and Lake Street
 - 7 minute travel time to downtown
- 12th Street Transit Ramp
 - Seamless bus connection between Marq2 bus lanes and 35W MnPASS lanes

2018 Major Transit Impacts

| | Stage 1 | | Stage 2 | |
|---|-------------|--|-------------|--|
| | Spring 2018 | | Summer 2018 | |
| Bridge closures | | | | |
| Franklin Ave bridge closed | | | | |
| 26 th St bridge closed | | | | |
| 38 th St bridge closed | | | | |
| Ramp closures | | | | |
| 11 th St ramp from I-94 closed | | | | |
| 12 th St ramp to I-35W lane restrictions | | | | |
| 35 th St ramp closures | | | | |
| 36 th St to SB I-35W ramp closure | | | | |
| Highway 65 downtown access closed | | | | |

2018 Major Transit Impacts



Stage 2 Commuter/Express Route Detours



- Metro Transit commuter/express routes will detour during Highway 65 closure
 - Serving South Minneapolis, Richfield, Edina, Bloomington, and Lakeville
- 31st St ramps will be transit and emergency vehicle access *only*
- Park/Portland features:
 - Peak direction transit lanes
 - Queue jump at Lake St
- 1st/Blaisdell features:
 - Lake St stop for neighborhood/ employer access
 - Added left turn lane from Grant to LaSalle

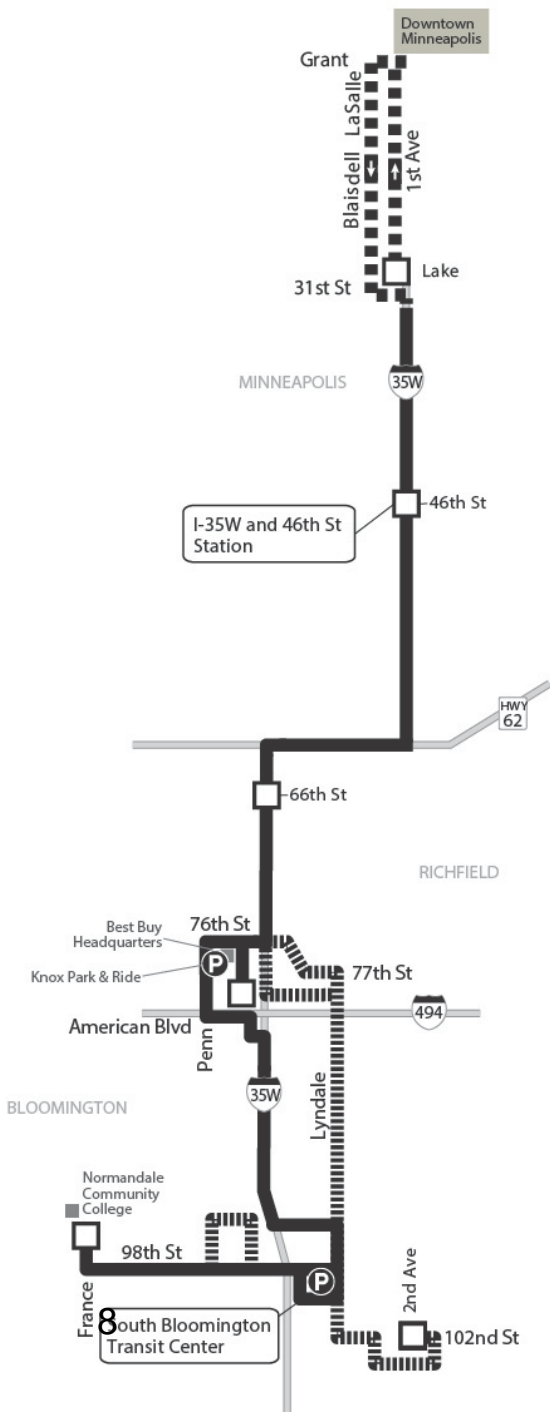
Transit Impact Mitigation

- Investment in reliability
 - Additional scheduled travel time
 - Additional non-revenue time
 - Extra scheduled and standby buses

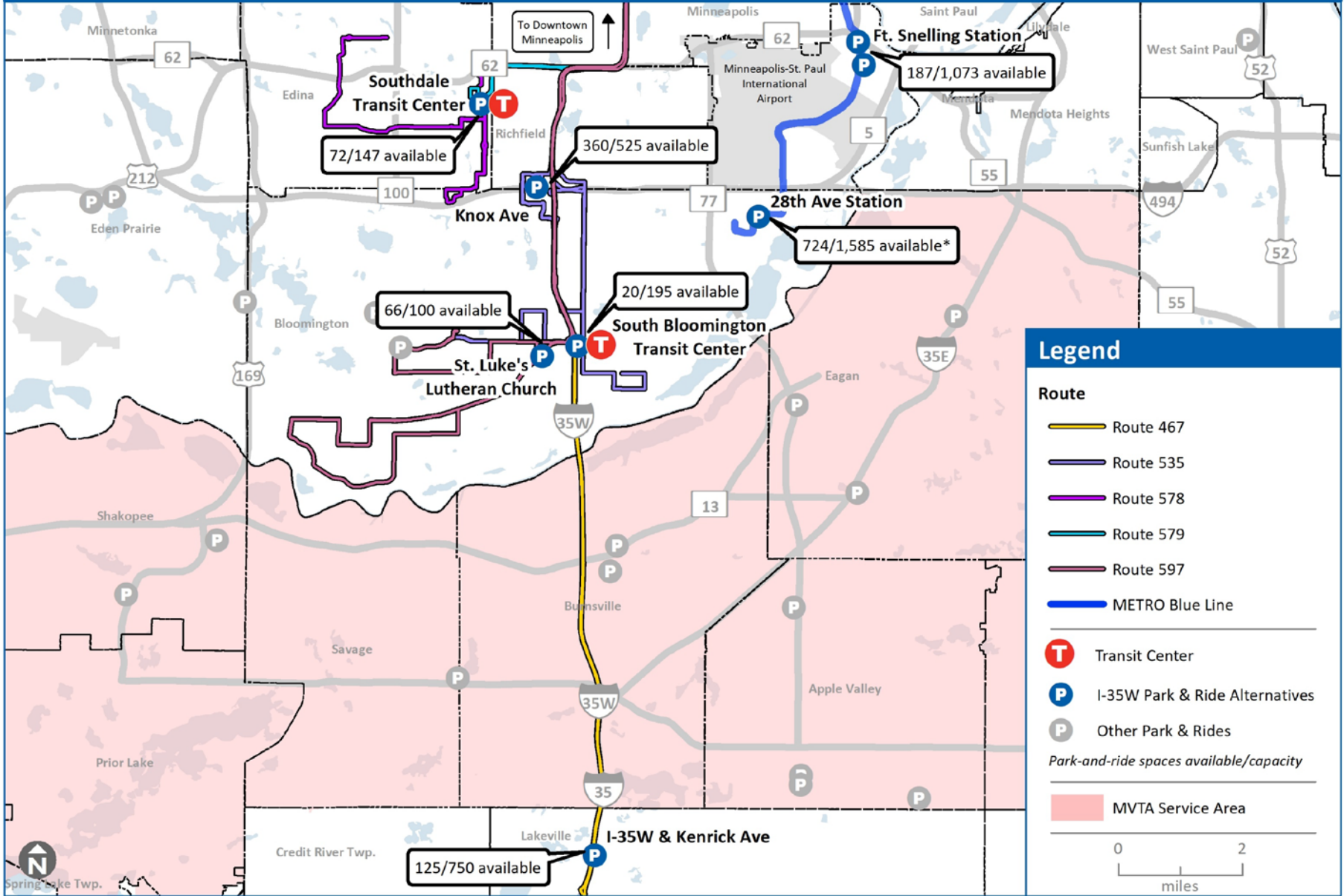
- METRO Blue Line

Transit Impact Mitigation

- Major service expansion
 - On 10 commuter routes, new trips added to serve 6-9am work starts and 3-6pm work ends
 - Significant enhancement on Route 535
 - Weekday: improve to 10-minute peak frequencies and 15-minute off-peak between Richfield and downtown Minneapolis
 - Weekend: NEW 30-minute service all day between downtown and South Bloomington Transit Center



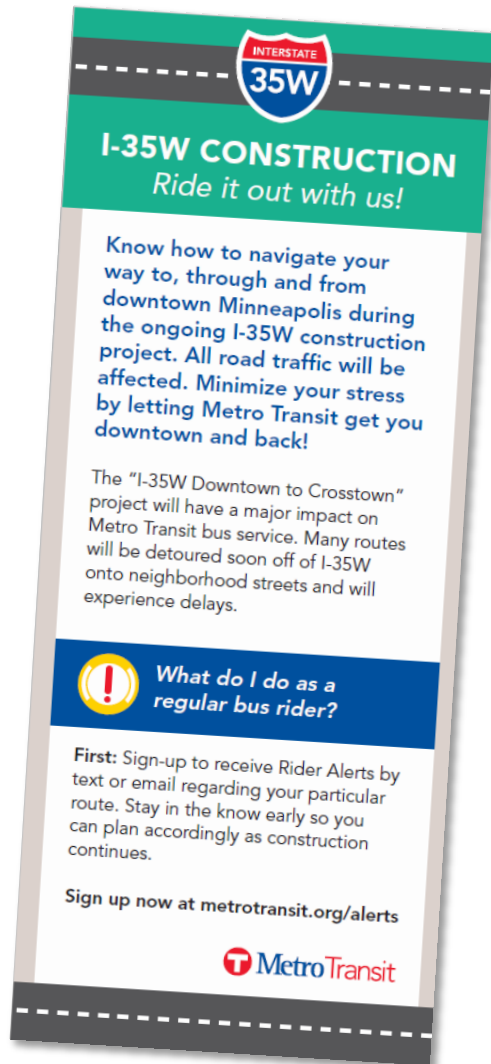
1,554 Park & Ride Spaces Available



Travel Alternatives

- Flex schedules with earlier or later trips
- Use local routes to connect to commuter/express routes or Blue Line
- Carpool/Vanpool
- Teleworking
- Bicycling and walking

Communication




- Metrotransit.org/35W
- Rider Alert subscription
- Buck-slips and business cards
- Commuter events and transit fairs
- Employer outreach FTE
- Marketing campaign will begin mid-May
- Customer outreach on Marq2 is being planned
- Construction hotline/email staffed by project consultant

Service Monitoring

- Daily service management
 - TCC
 - Street Operations
- Operational analytics
 - Ridership
 - Travel time/reliability
 - Delay “hot spots”
- Service adjustments
 - Coordination with construction phases
 - Respond to ridership changes



Questions?

A graphic sign for Interstate 35W construction. On the left is a shield-shaped logo with 'INTERSTATE' in a red banner at the top, '35W' in a blue circle in the middle, and a green and black road graphic below. To the right, the text reads: '35W CONSTRUCTION' in bold red, 'Ride it out with us!' in red italics, a paragraph of black text about rider alerts, and 'Sign up now at metrotransit.org/alerts' in red.

35W CONSTRUCTION
Ride it out with us!

Sign-up to receive Rider Alerts by text or email regarding your particular route. Stay in the know early so you can plan accordingly as construction continues.

Sign up now at metrotransit.org/alerts