

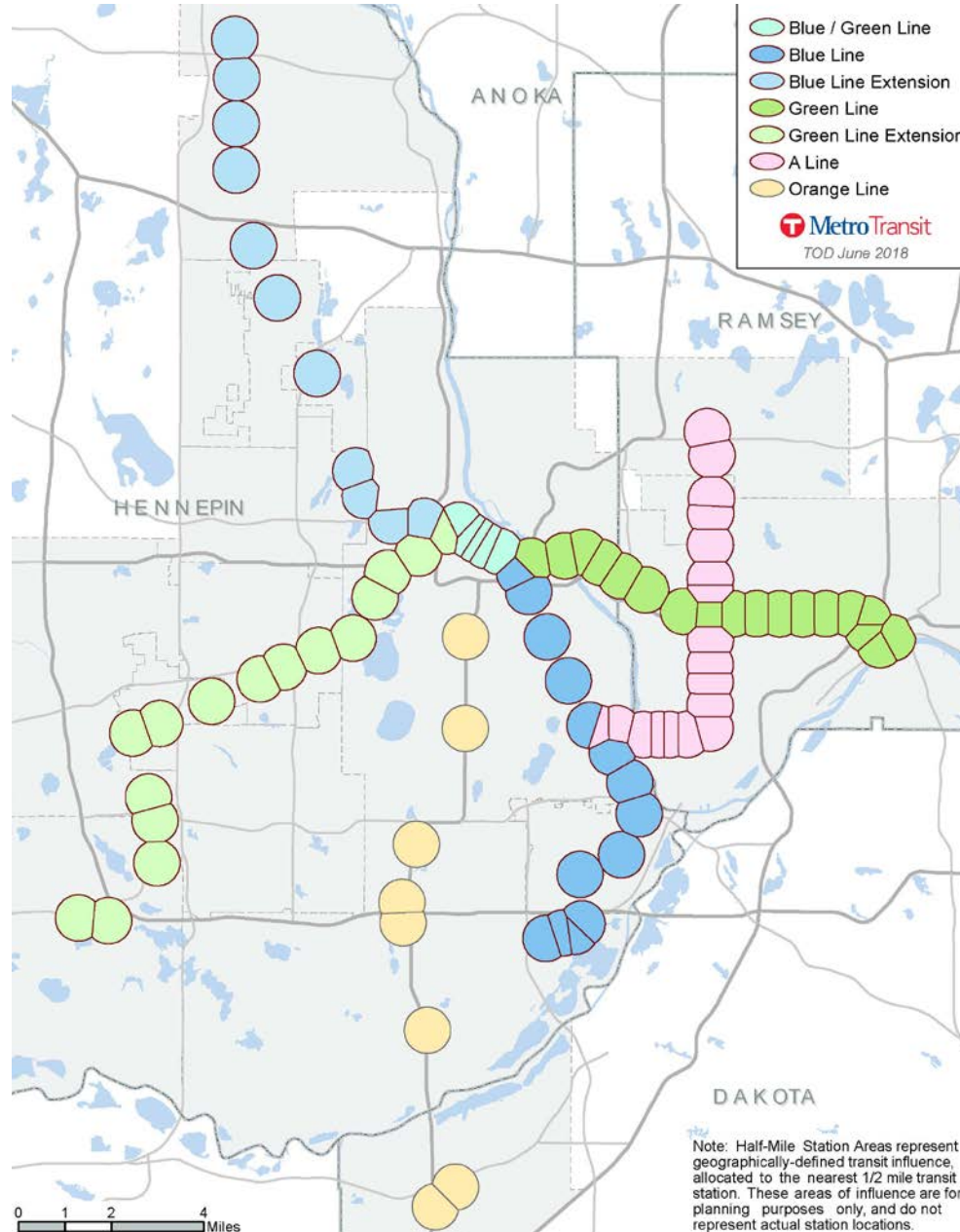
Development Trends Along Transit

Michael Greif – TOD Associate Planner

- “Deliver environmentally sustainable transportation choices that link people, jobs and community conveniently, consistently and safely.”
- More than just a dollar amount
- Indicates that people value accessible locations

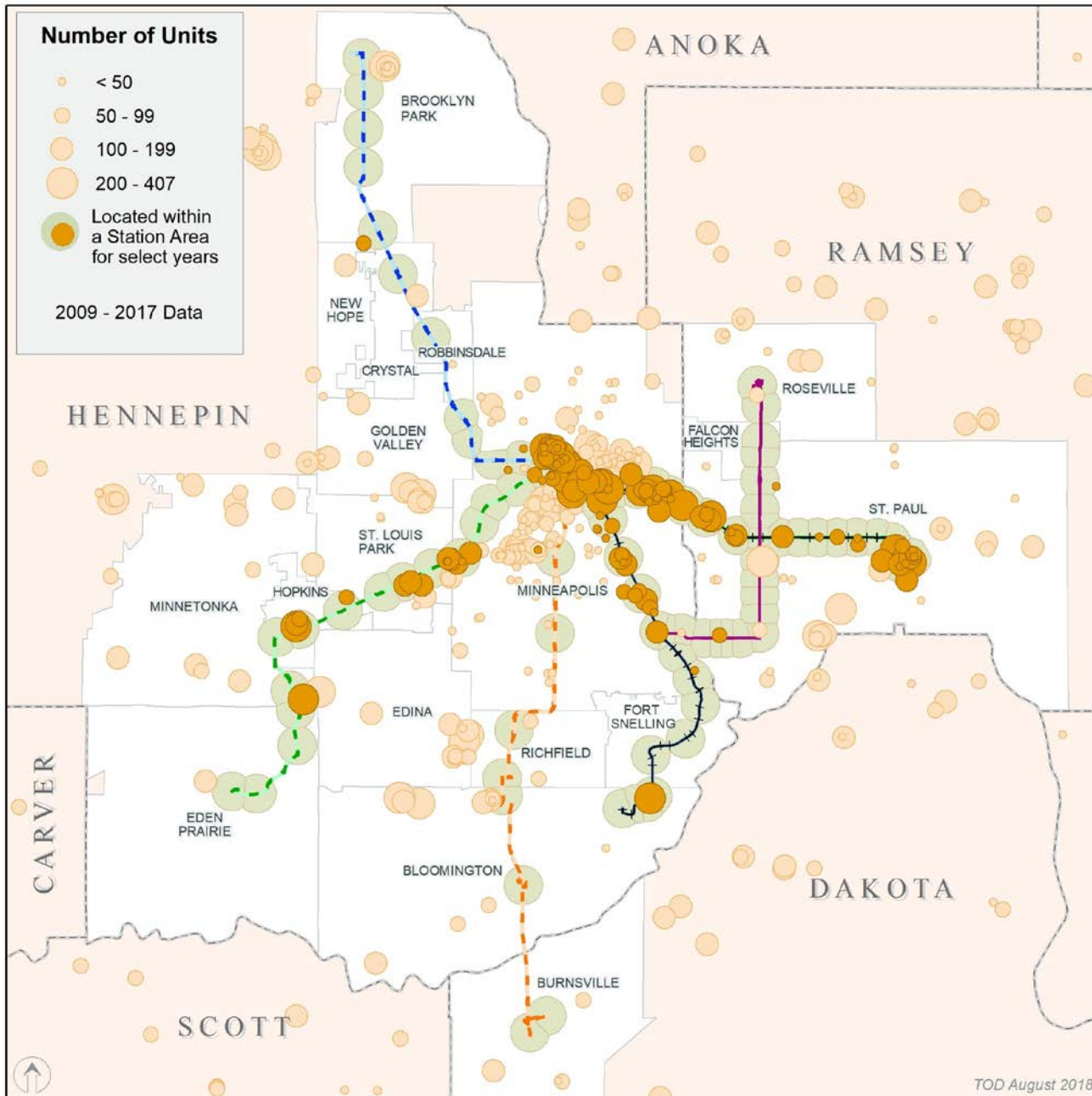
- Data from Annual Building Permit Survey & Development Tracker
- 2003-2017
- High-frequency, fixed route transitways (½ station areas)
- Multifamily residential, commercial, and public/institutional development
- Different from previous Council reports

Included Transitways



Permitted Development (2003-2017)

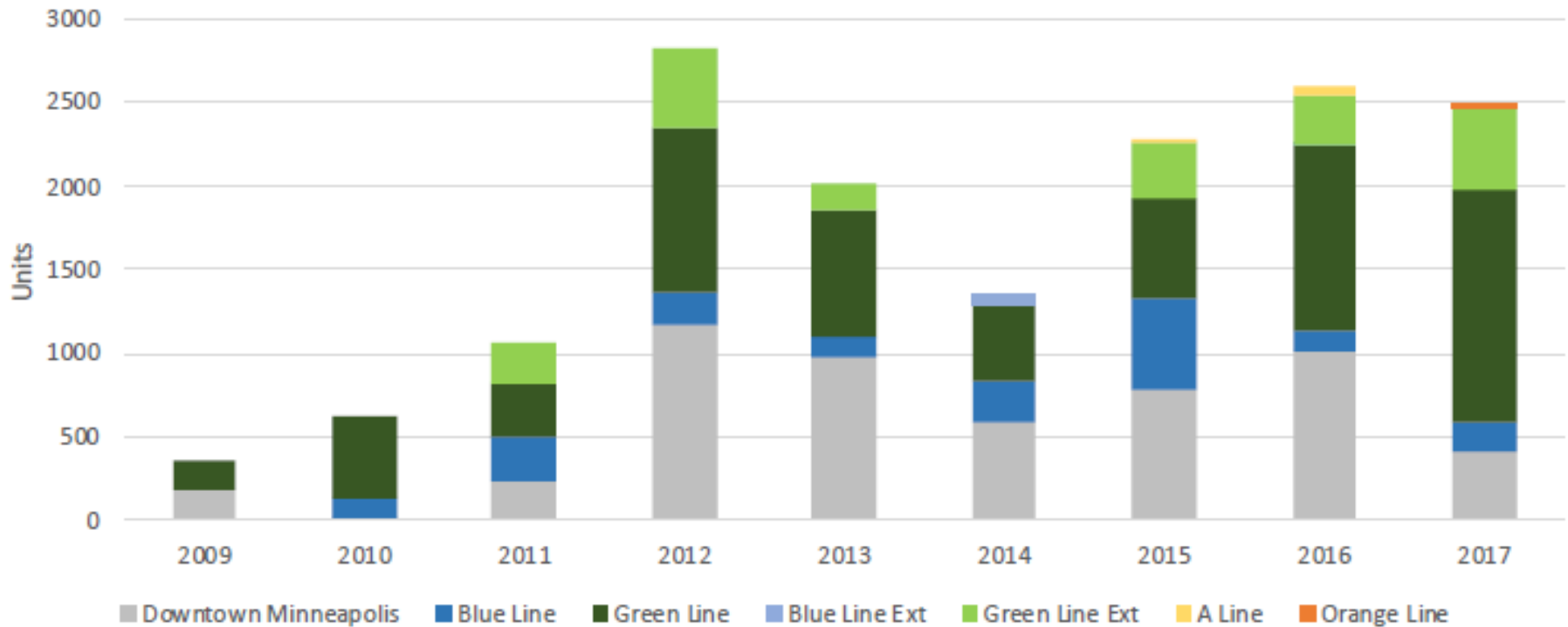
Multifamily Residential



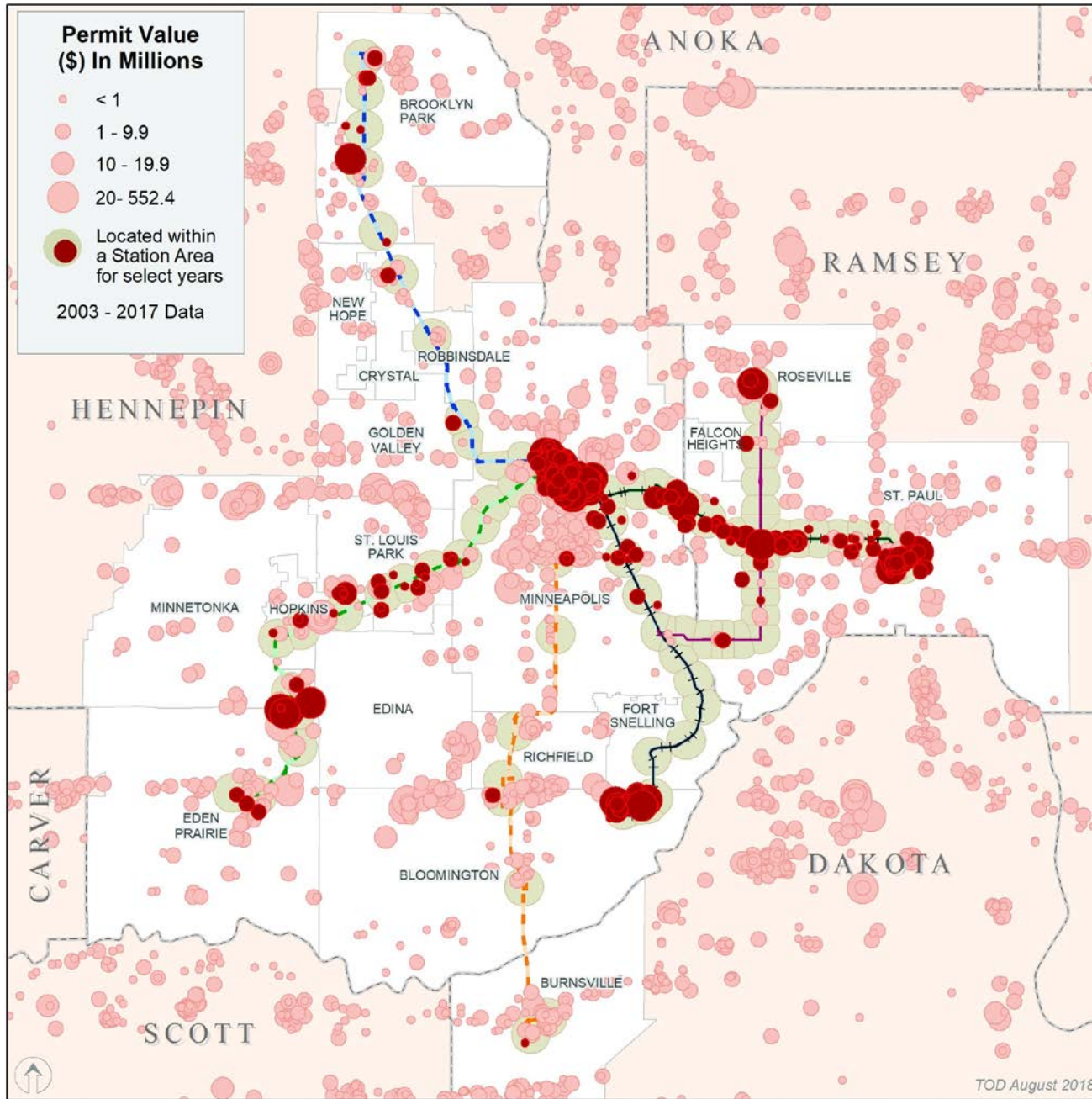
Multifamily Residential



- Over **15,000 units** permitted along transitways between 2009-2017
- 30% of MF development on 2% of region's land



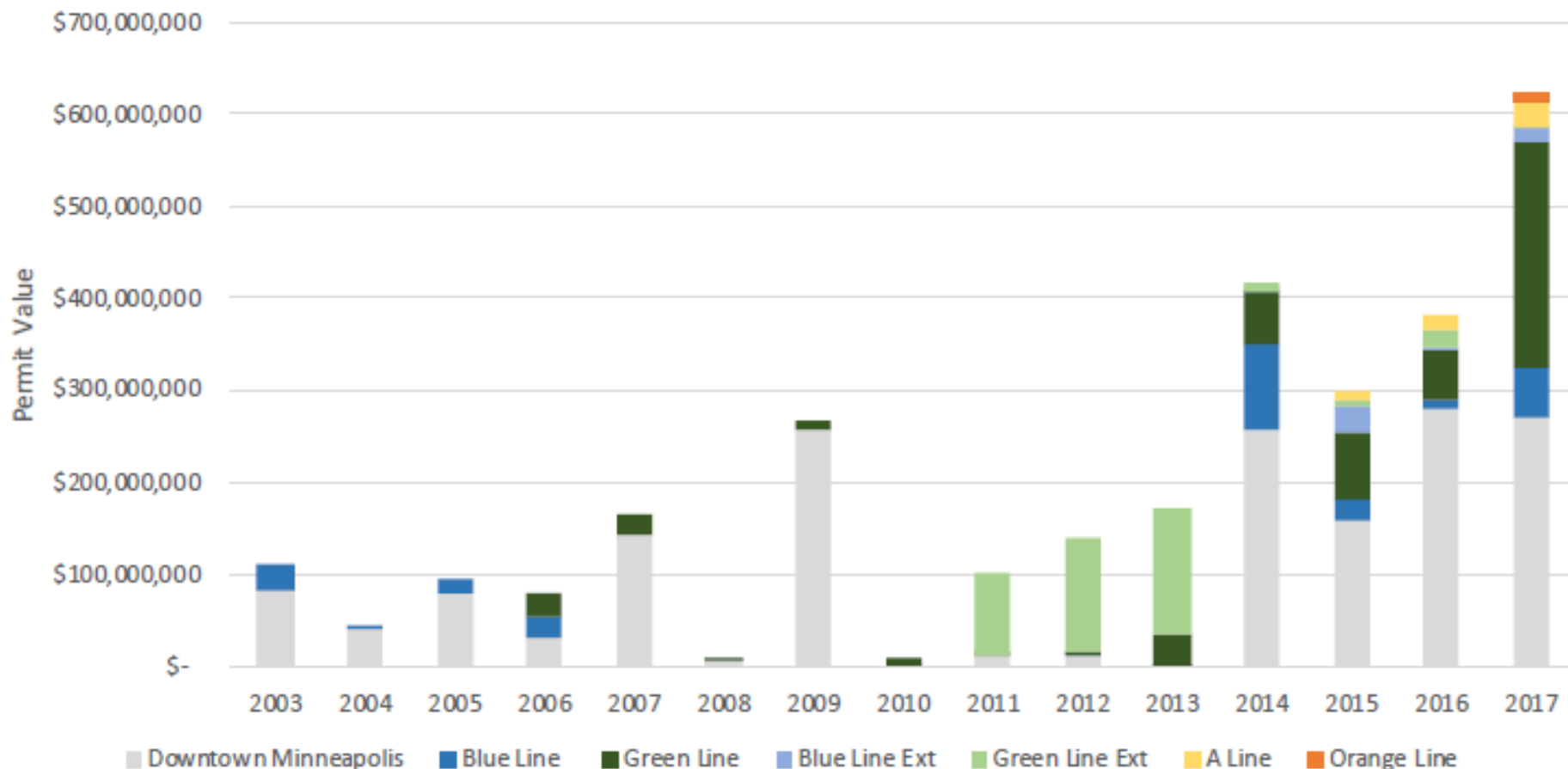
Commercial Development



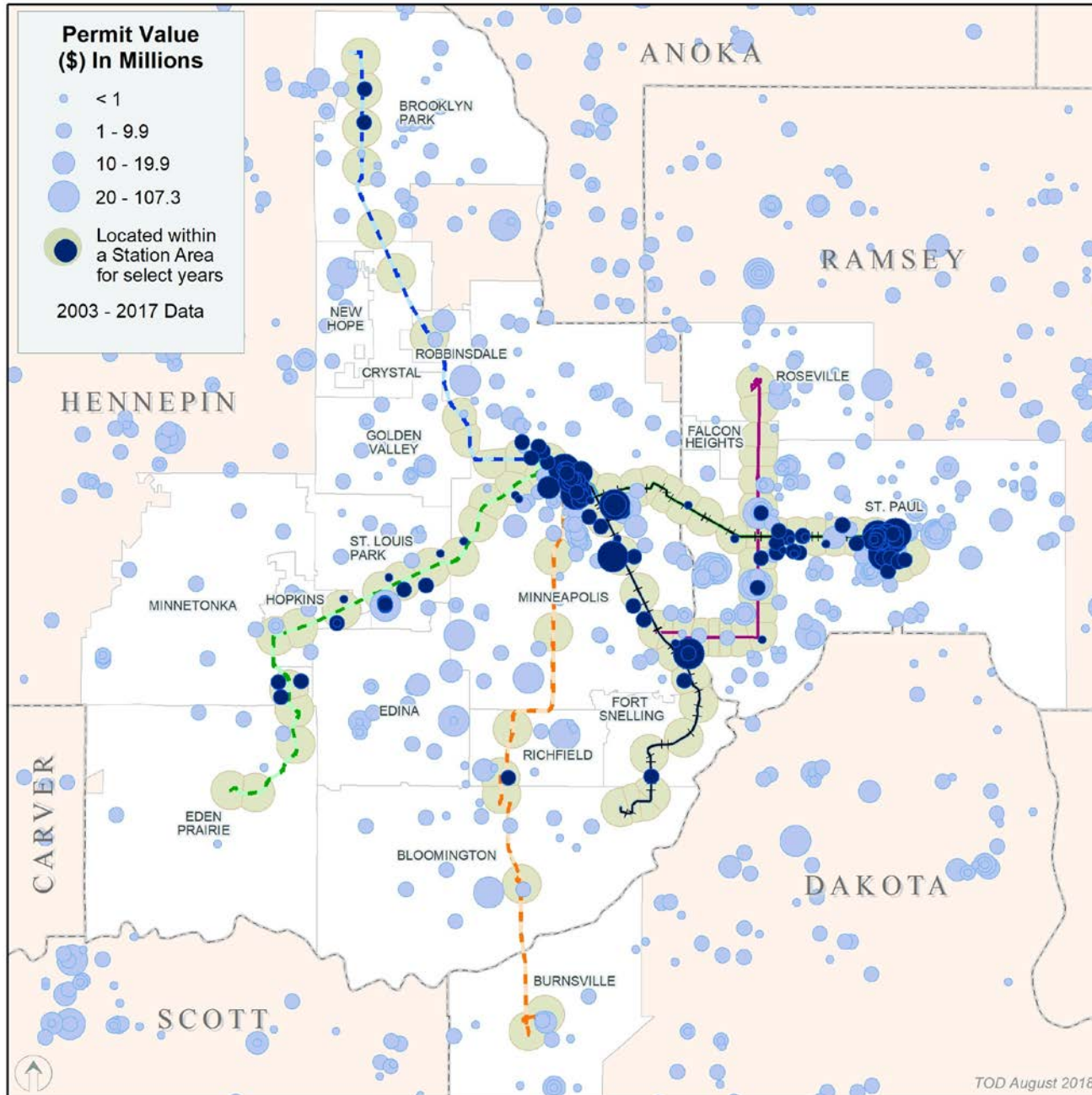
Commercial Development



- **\$3.7 billion** in commercial development (2003-2017)
- 33% of commercial development on 2% of land



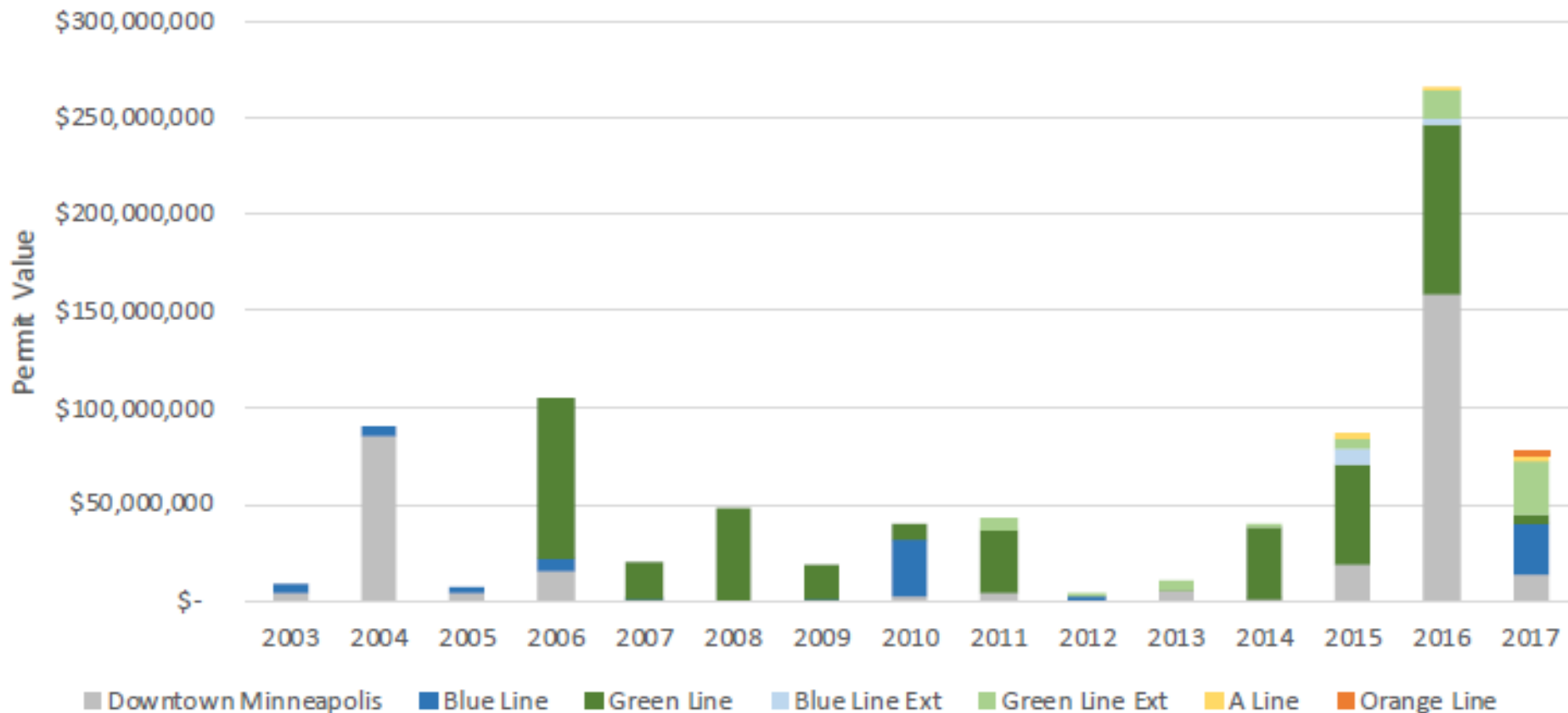
Public and Institutional Development



Public and Institutional Development



- **\$850 million** in public and institutional development (2003-2017)
- 16% of public development on 2% of land

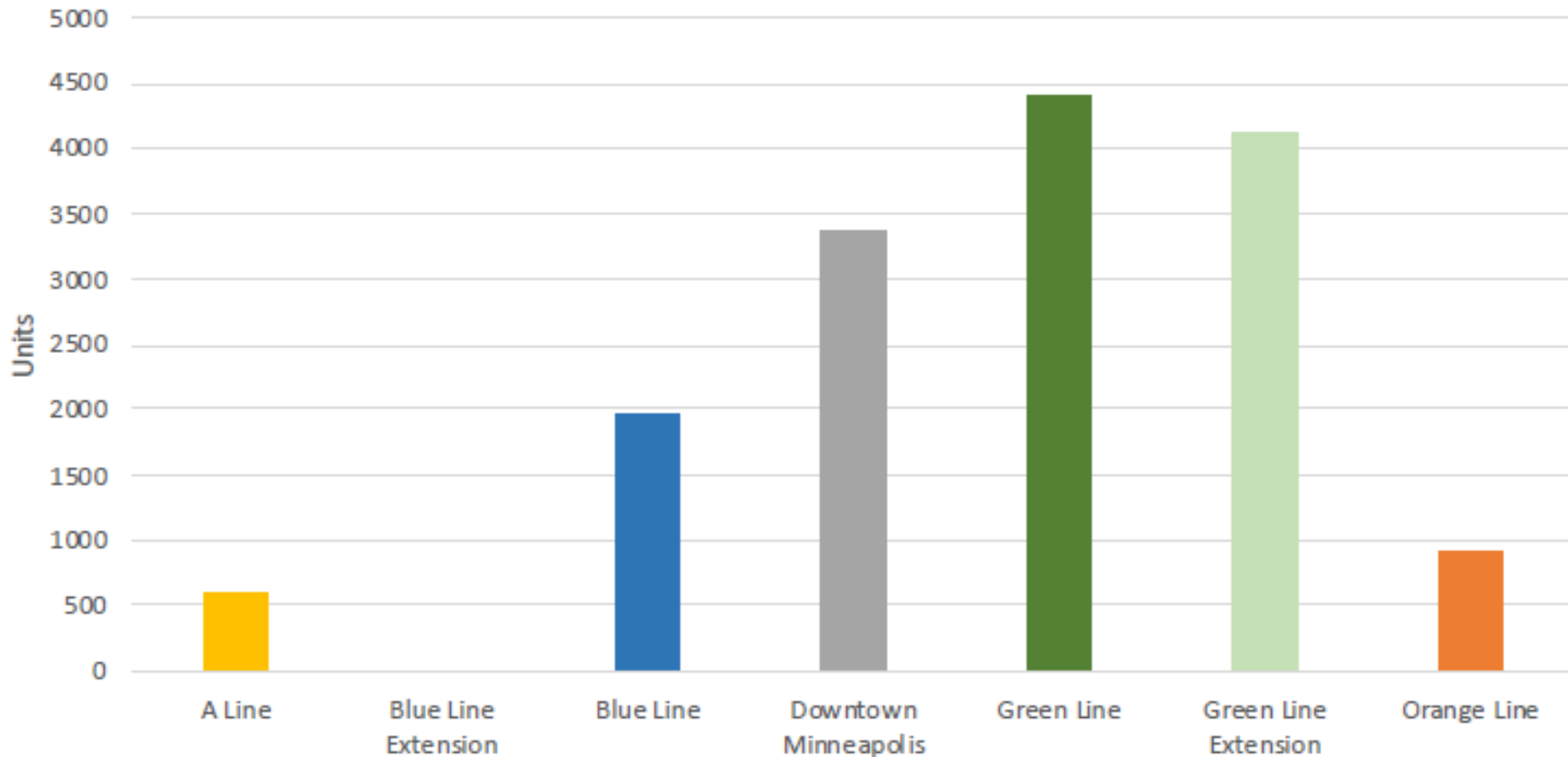


Planned Development

Planned Development



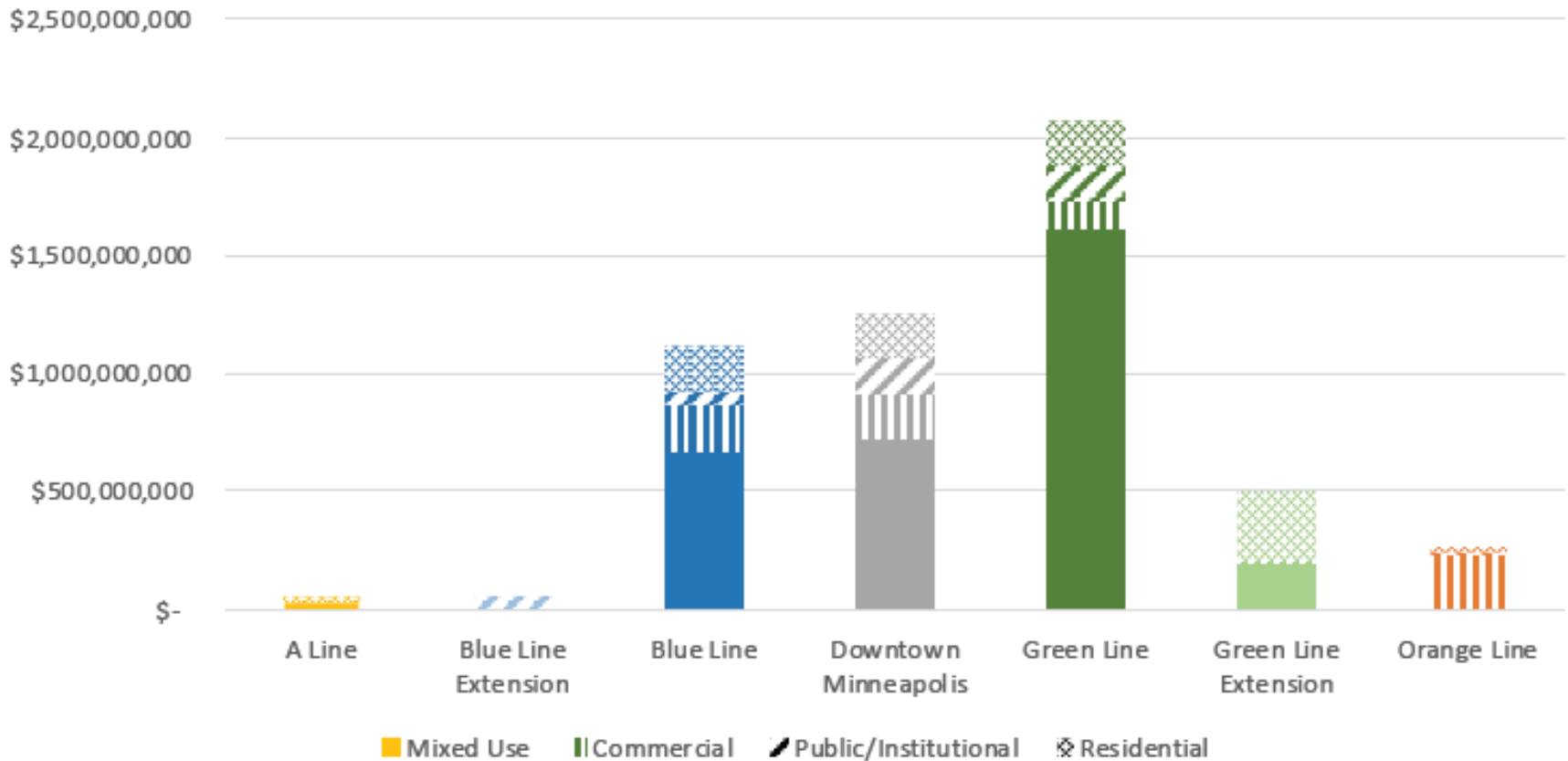
- 15,000 multifamily units



Planned Development



- \$5 billion development value
- 45% of planned development mentioned by media

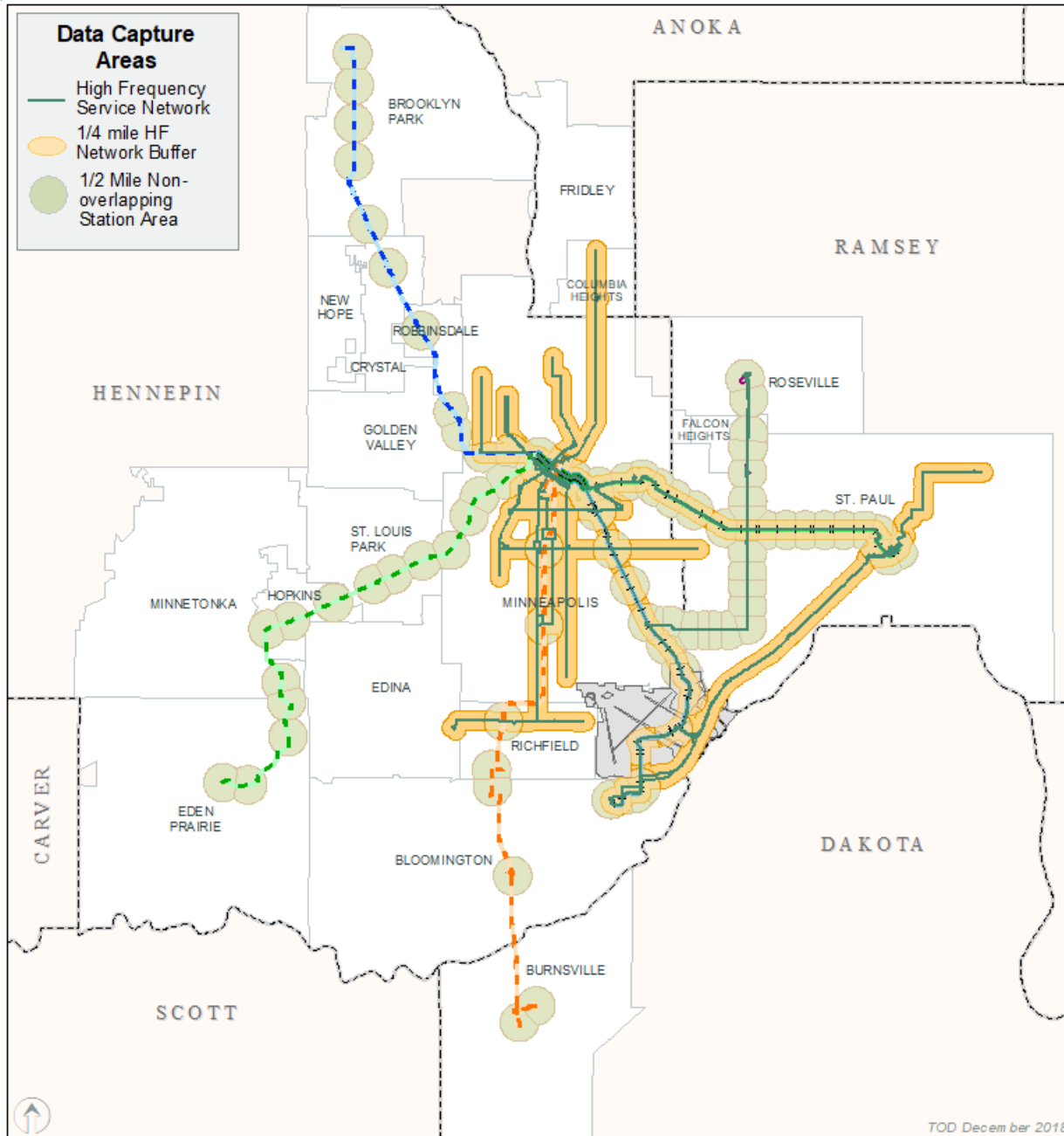


- \$3.7 billion commercial development
- \$850 million public institutional development
- \$5 billion in planned development

- 15,500 permitted units
- 15,000 planned units

- Including additional forms of development
 - Townhomes
 - Industrial
 - Airport
- Including residential values
- Expanding to all high-frequency transit

High-Frequency Transit



- Preliminary Results
 - 43% of commercial development
 - 28% of public/institutional development
 - 44% of multifamily residential development
 - All in 2.4% of the region

Questions?

Michael Greif
TOD Associate Planner
Ext. 7692