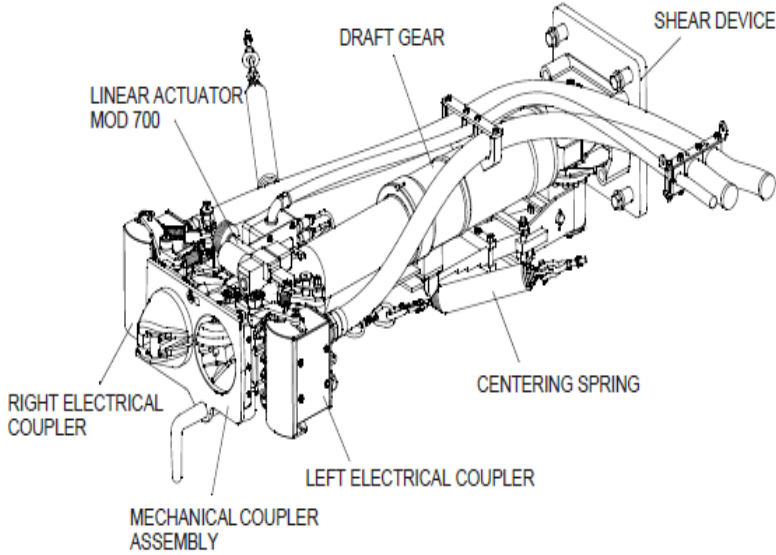


Type 1 Light Rail Vehicle (LRV)

Automatic Coupler Purchase, Contract 19P117



Christopher Royston
Manager, LRV Overhaul & Special Projects



Questions?



Light Rail Vehicle Overhaul & Special Projects

Prepared by Christopher Royston

612-341-5698

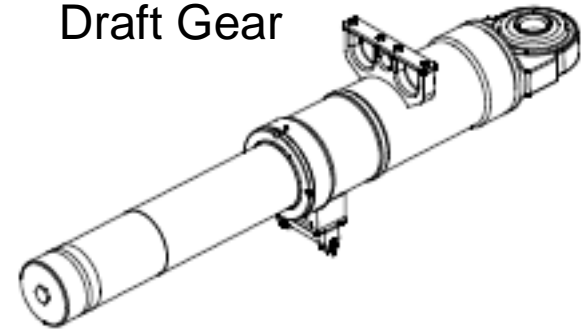
christopher.royston@metrotransit.org

9/23/2019

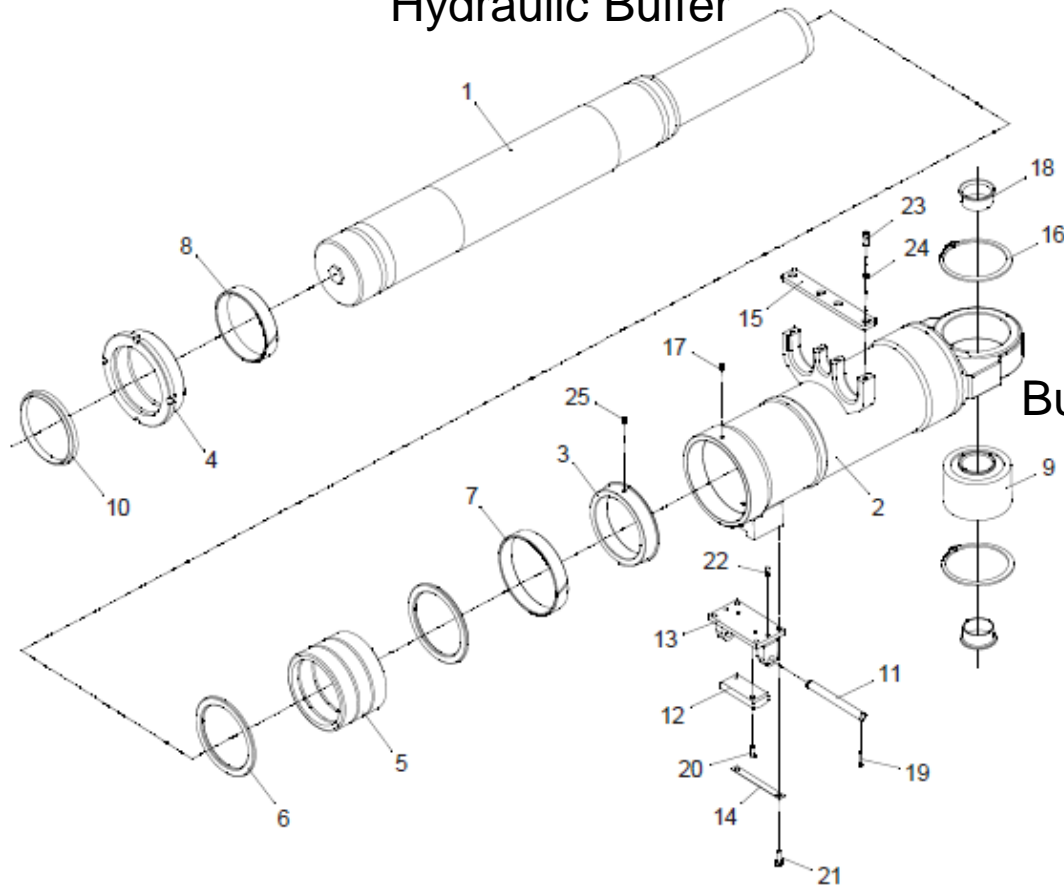


Backup Slides

Draft Gear



Hydraulic Buffer



Buffer-Tube

Automatic Couplers Overhauling vs Purchasing New

Overhaul Pricing

- Overhaul Cost (54) - \$1.577M
- Buffer Tubes (54) - \$972K
- Electric Coupler (Right) - \$99K
- Electric Coupler (Left) - \$99K
- Float Couplers (4) - \$335K
- **Total Cost - \$3.1 Million**

Purchasing New

- 54 Automatic Couplers - \$3.2M
 - ❑ Buffer Tubes – 54
 - ❑ Electric Couplers (RT) – 54
 - ❑ Electric Couplers (LT) – 54
- **Total Cost - \$3.2 million**

Key advantages: Replacing with new offers a longer component lifecycle, reduces manhours by 15K+, and provides a warranty that would not be included if we overhauled the couplers.