

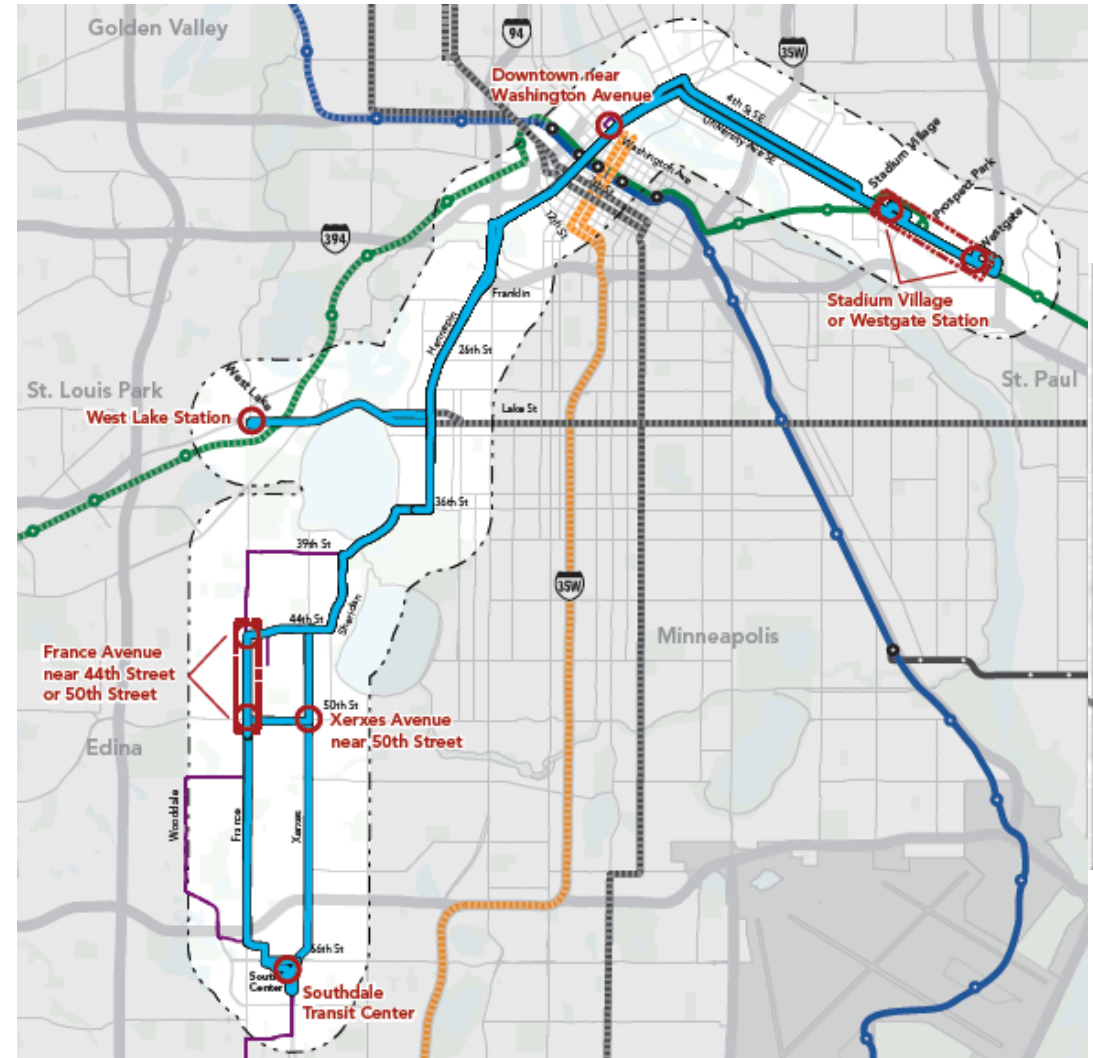
E Line Staff Recommended Alignment

Metropolitan Council Transportation Committee
Monday, September 23, 2019

Kyle O'Donnell Burrows, Sr. Planner, BRT Projects

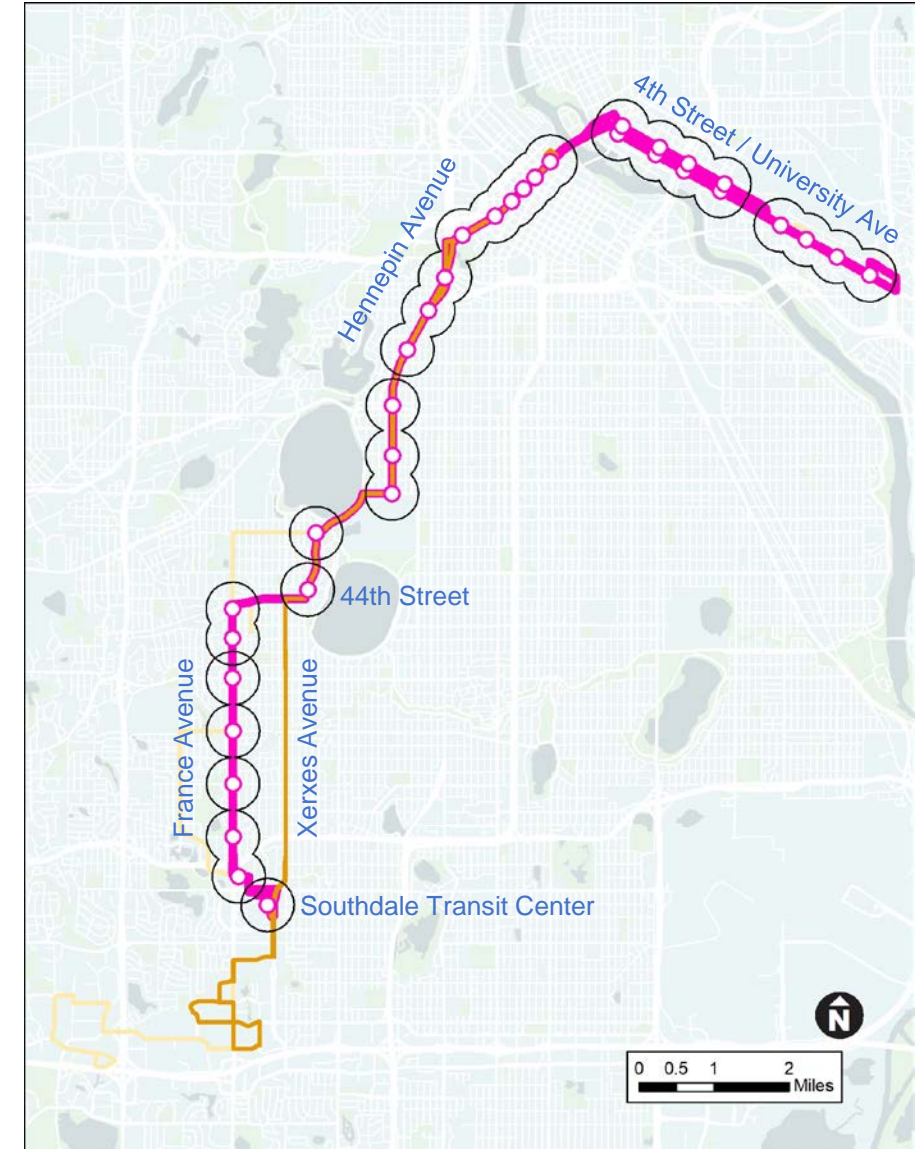
E Line alignment alternatives under consideration

- Known alignment between downtown & Lake Street
- Initial options studied
 - 2 north end
 - 7 south end
- North end recommendation along 4th & University
- 3 south end options recommended for advanced consideration
 - Alternative 4 dropped from consideration due to integration with connecting bus plan



E Line corridor staff recommendation

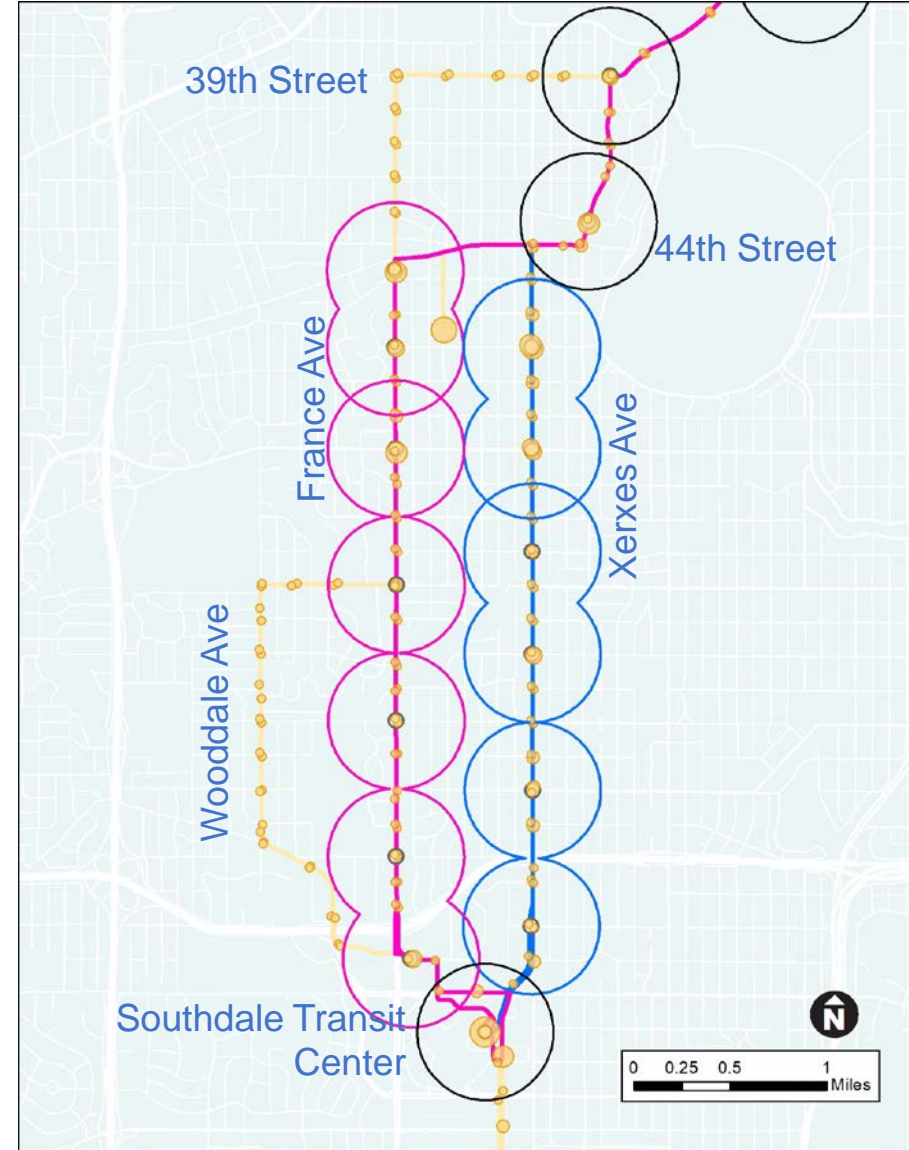
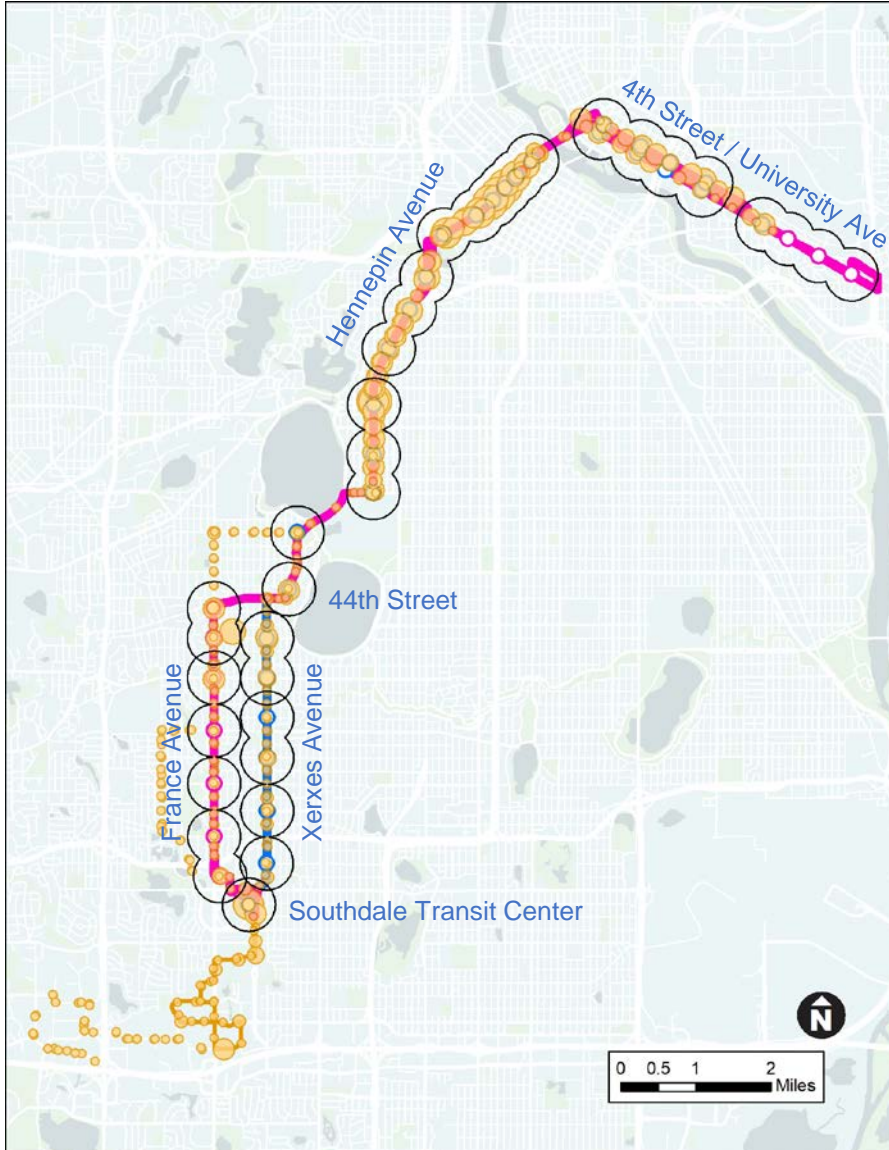
- Northern terminal:
 - Serve 4th Street and University Ave
 - Final terminal to be determined
- Southern terminal:
 - Southdale Transit Center
- Alignment:
 - 44th Street to France Avenue
- Service Mix:
 - E Line:
 - 10 minutes all day
 - Route 6:
 - 20 minutes all day
 - Downtown to Minnesota Drive via Xerxes Avenue



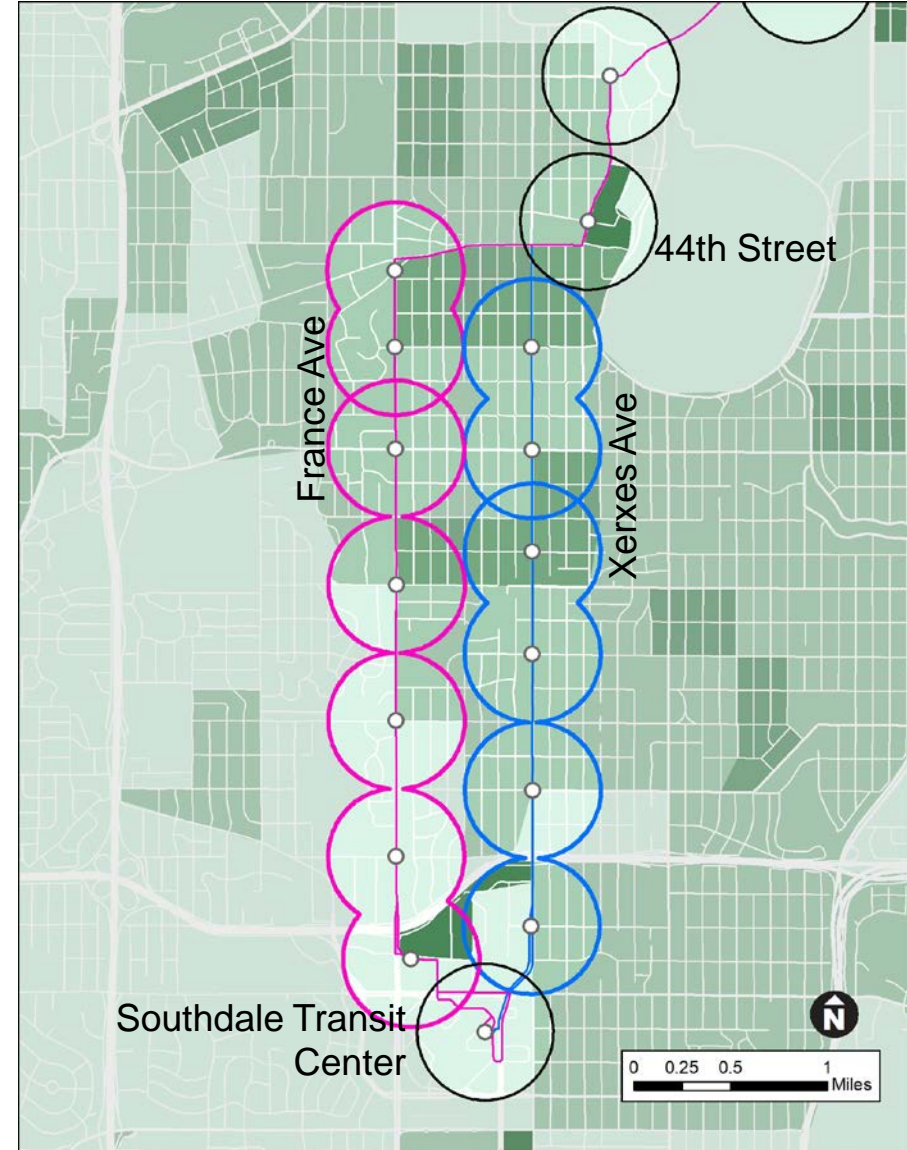
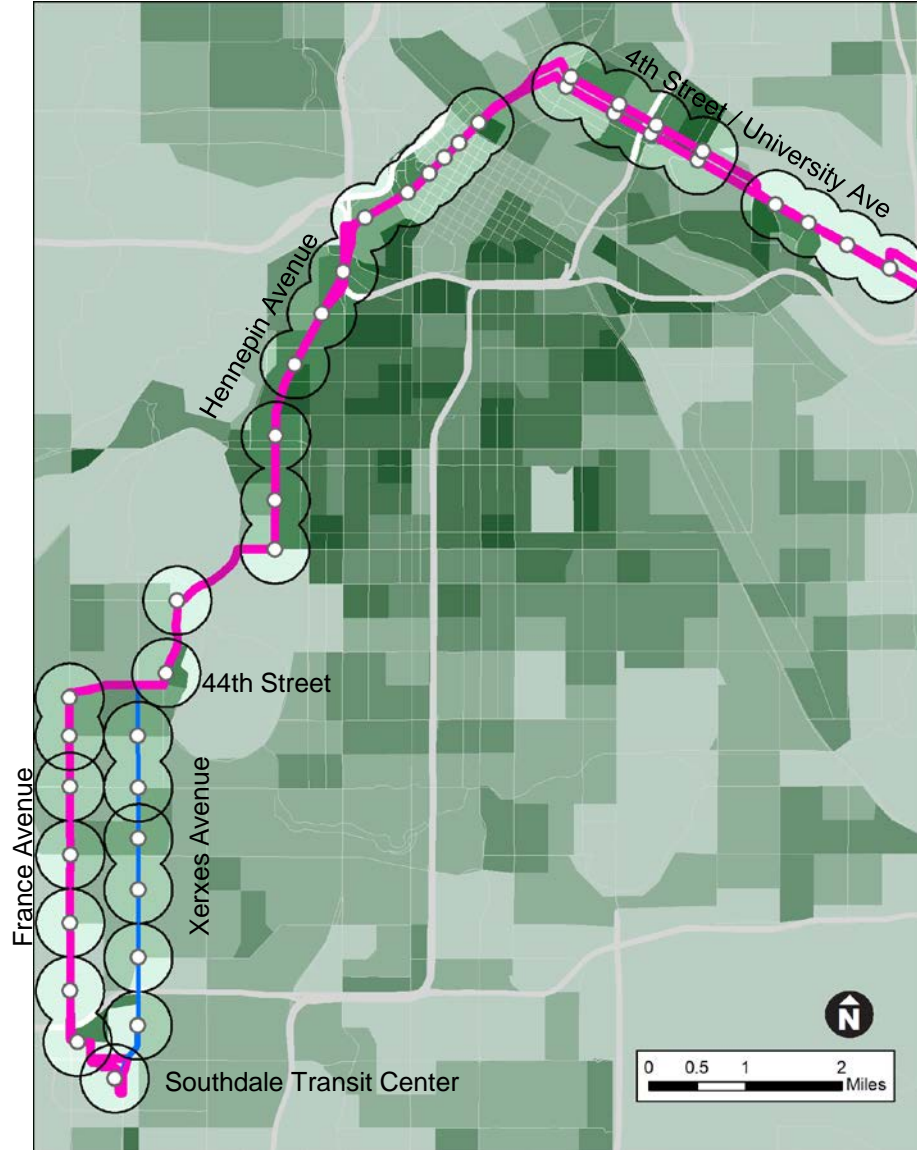
Supporting rationale

- Little significant difference between France Ave and Xerxes Ave on comparative quantitative metrics of potential benefit
 - Overall benefit/ impact to existing Route 6 riders
 - Population and jobs served
 - Benefit to populations of concern (race and income)
- Key difference between France Ave and Xerxes Ave: *access to key regional destinations*
 - France Avenue alignment:
 - Commercial nodes at 44th St & France and 50th St & France
 - Fairview Southdale Regional Hospital campus
- Comparable resource requirements for concept capital and operating plans
- Aligns with public feedback

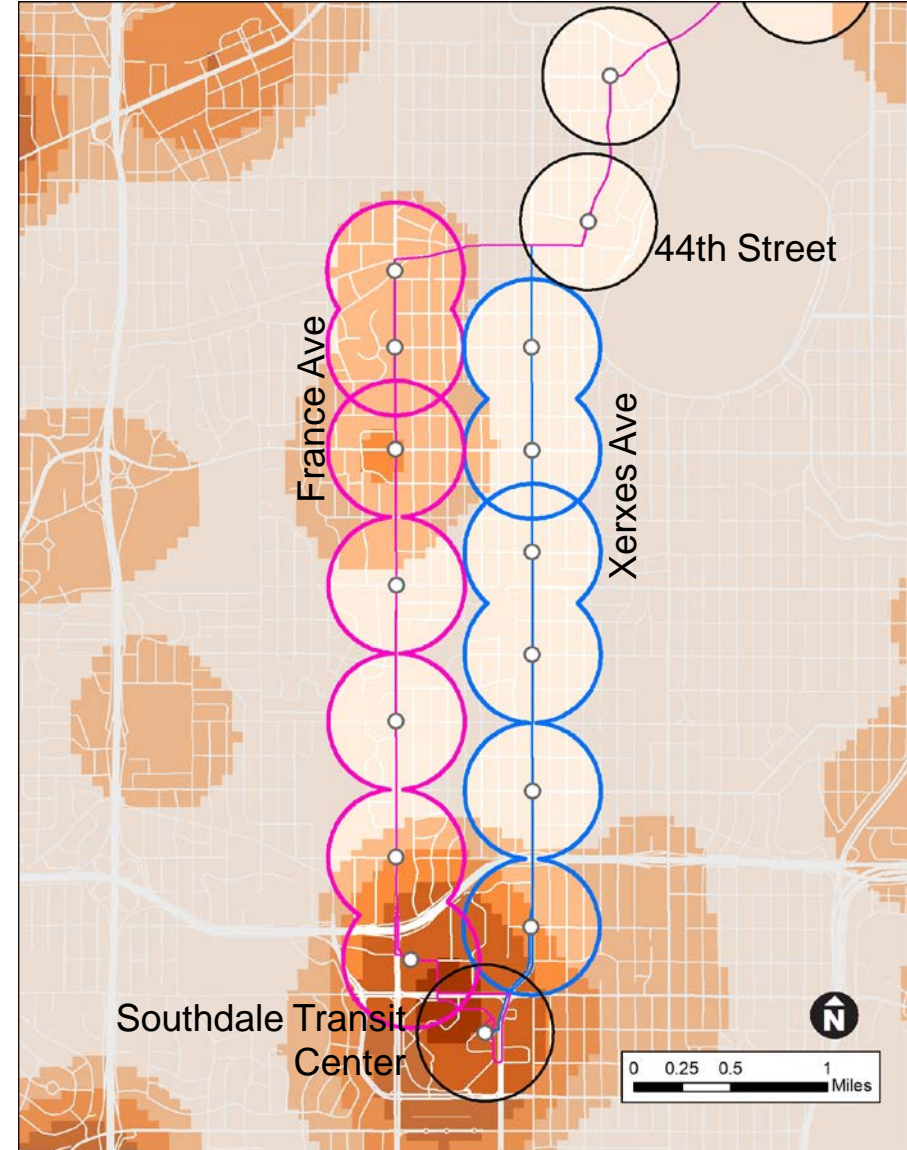
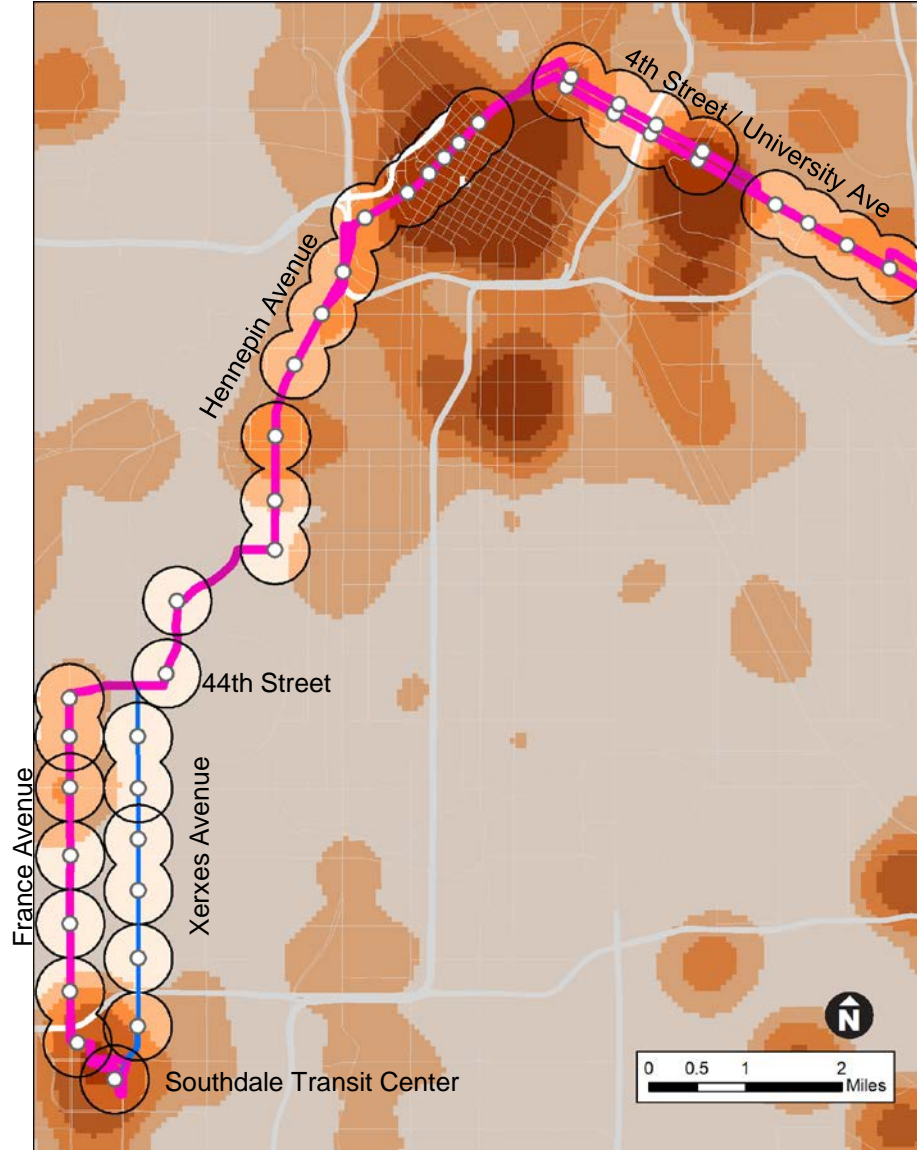
Existing Route 6 ridership served



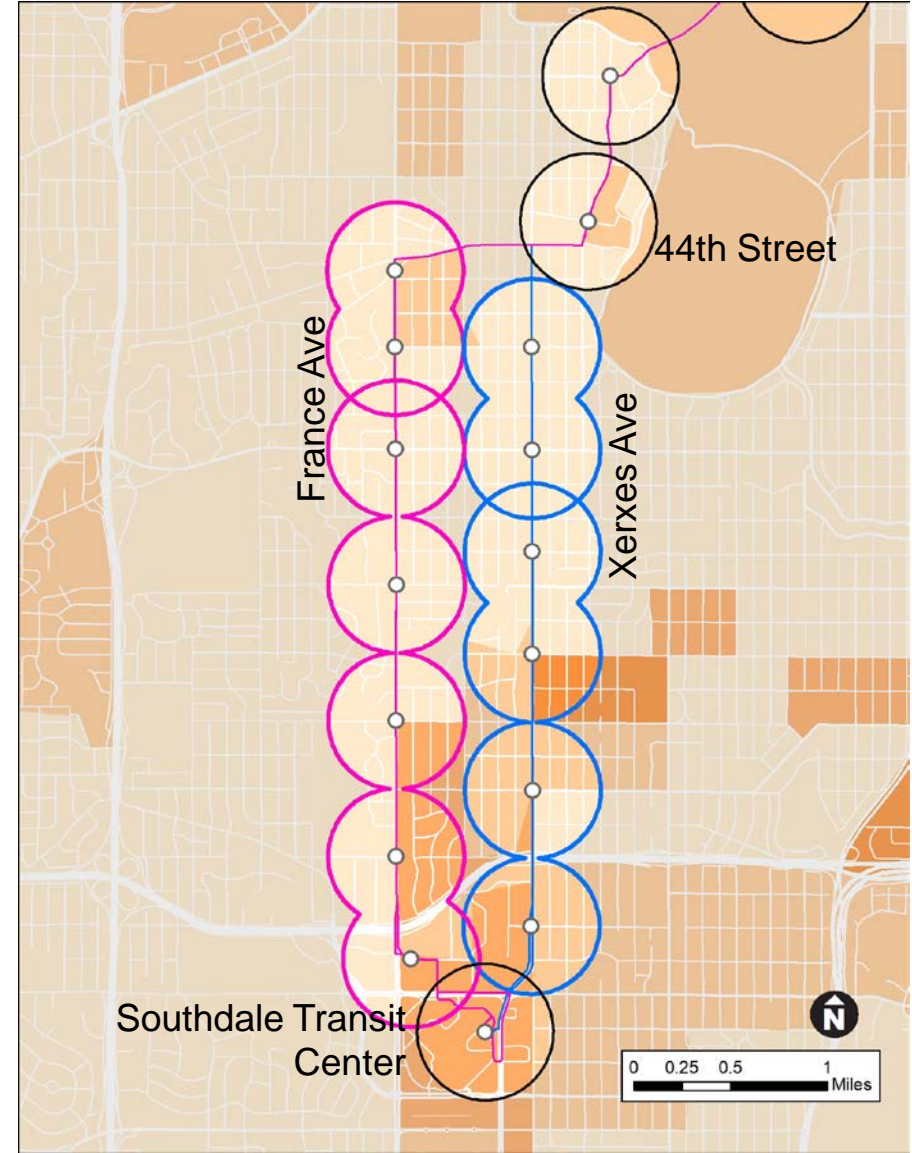
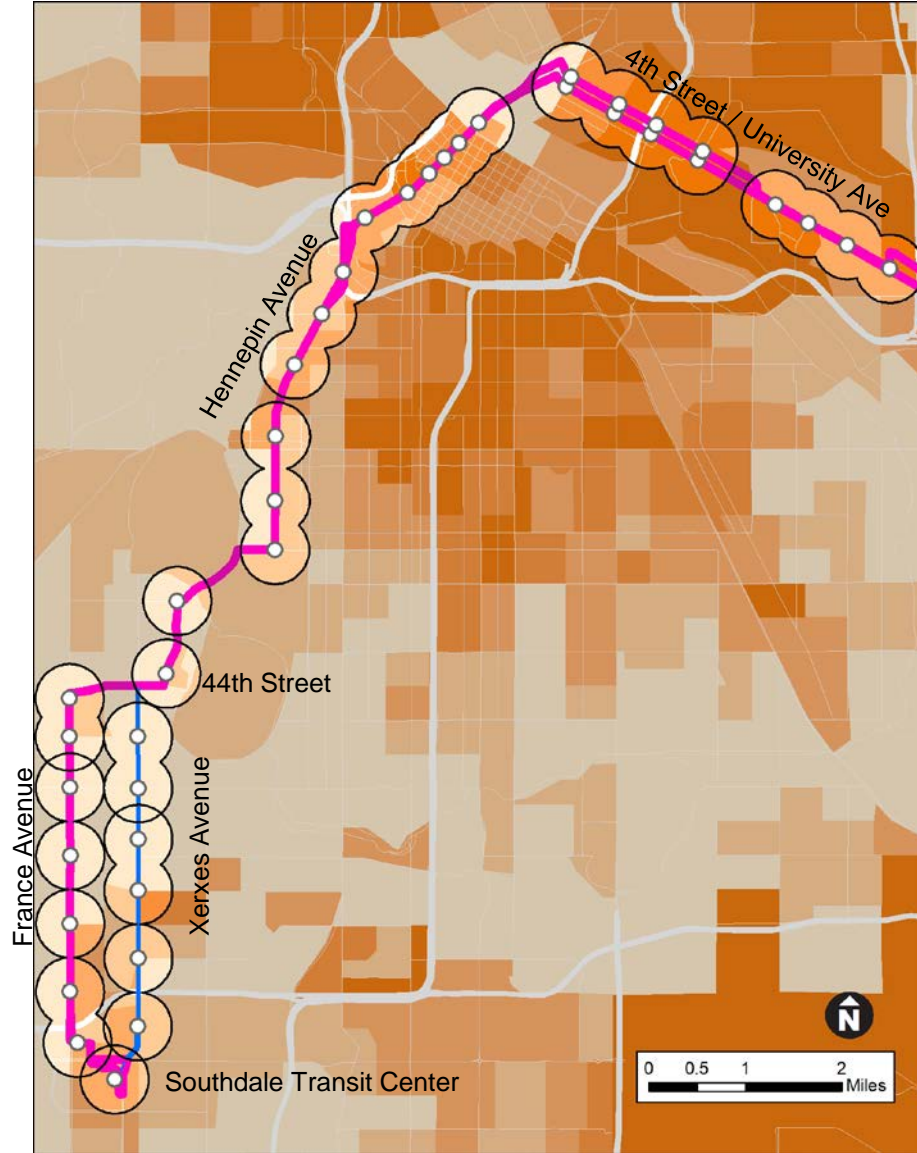
Population density



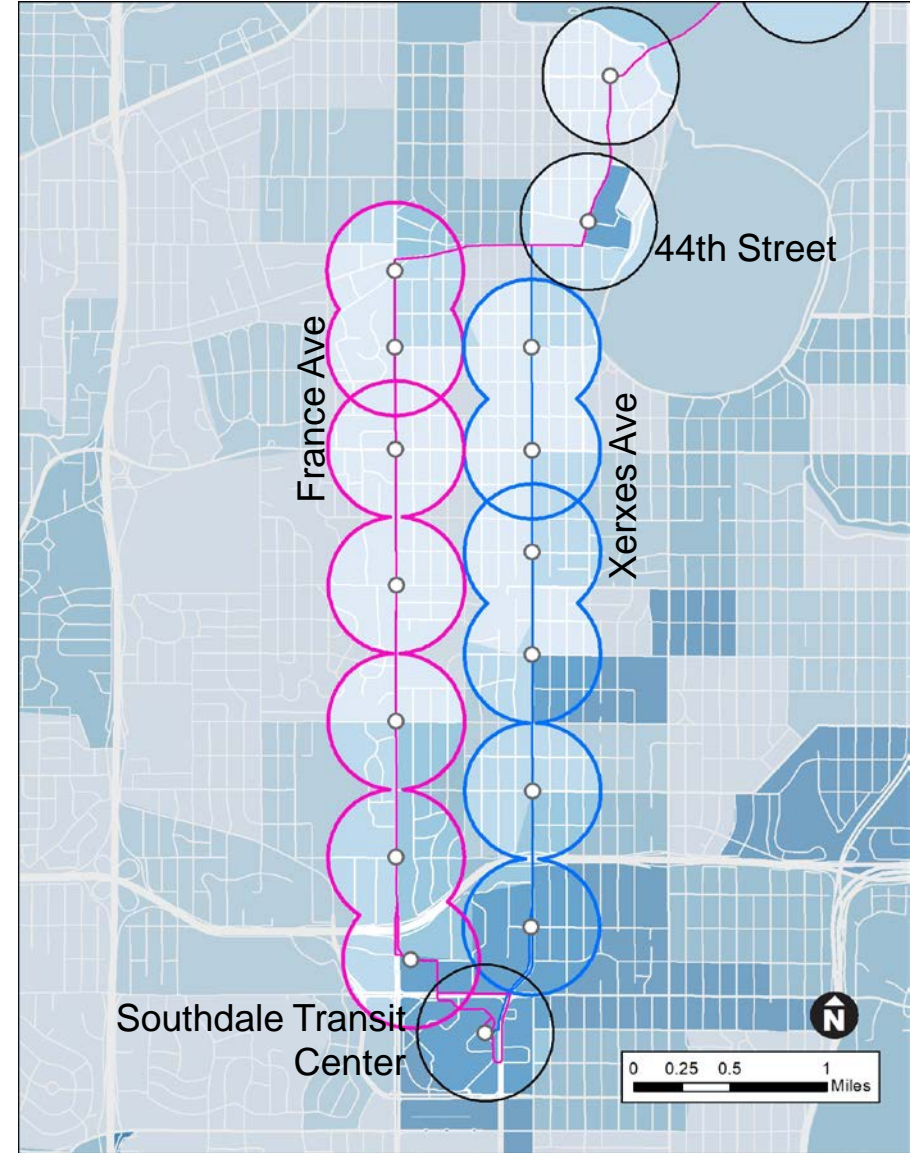
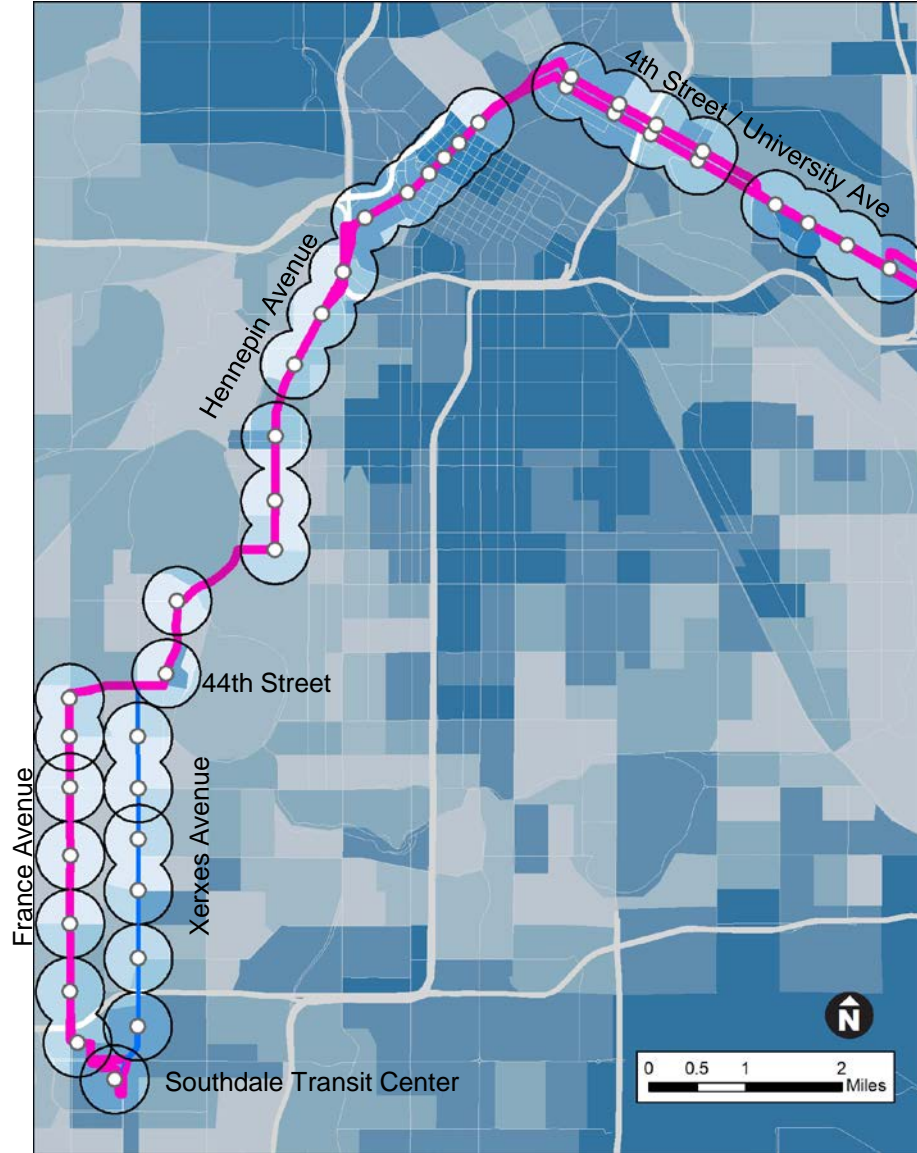
Job density



Percent of population below 185% of the poverty line



Percent people of color

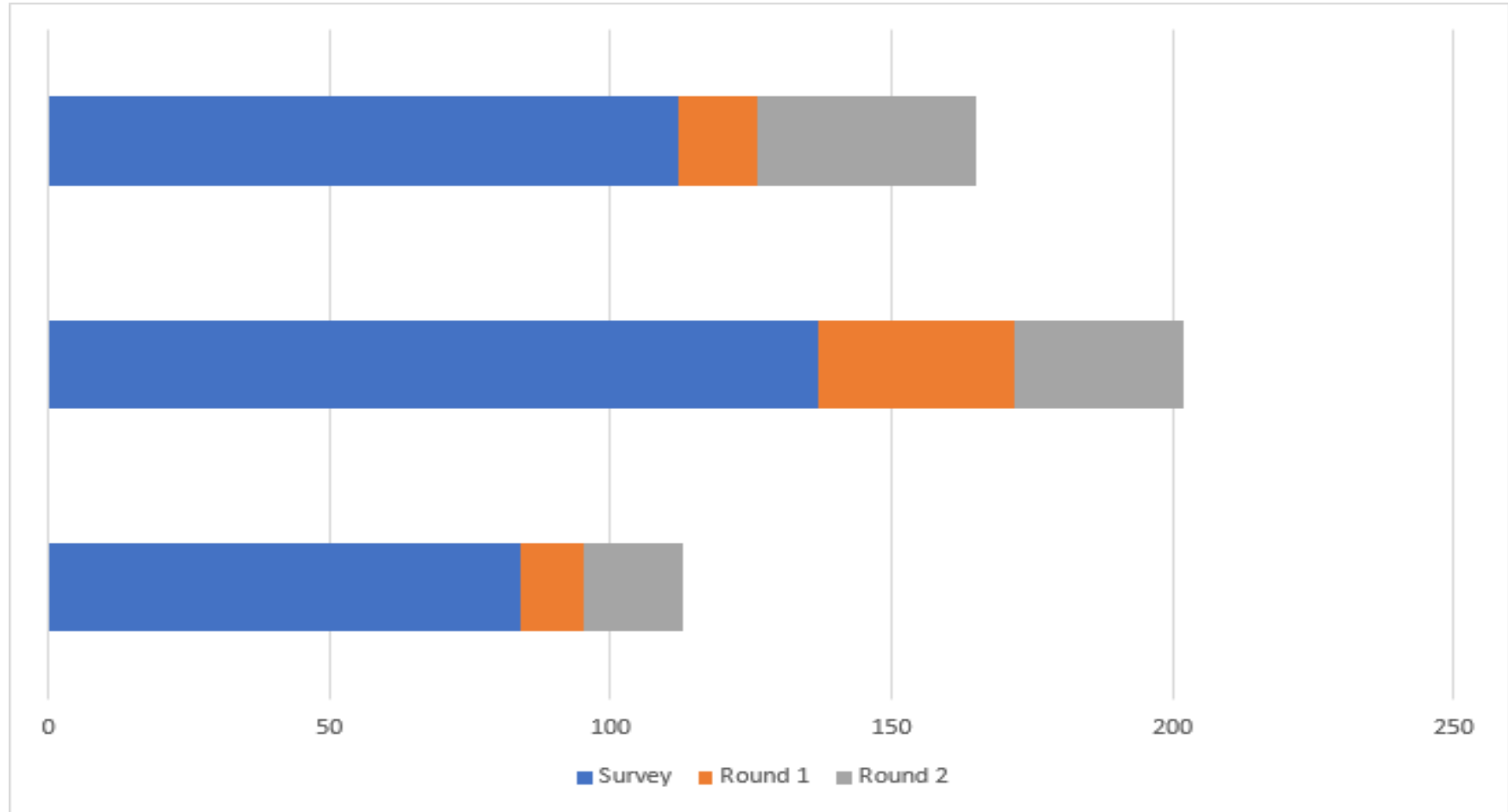


Public Preference (Feedback from survey and two open house rounds)

Alternative 6:
Xerxes Ave

Alternative 5:
44th to France

Alternative 4:
50th to France



Next steps for alignment recommendation

- On-corridor outreach
 - Already occurring community events
 - Community organization meetings
 - Targeted door knocking
- Open houses and public comment period targeted for November
- Recommended alignment taken before Council to consider for adoption following public comment period

Thank you

Kyle O'Donnell Burrows
Sr. Planner, BRT Projects