



Commuter Express Service & Park-and-Ride Update

Transportation Committee
December 14, 2020

Adam Harrington, Service Development
Anna Flintoft, Engineering & Facilities

What is a Park-and-Ride facility?

- Commuters to downtown and U of M
- Creates customer density needed for cost-effective transit service from suburban and rural areas
- Peak period congestion management tool



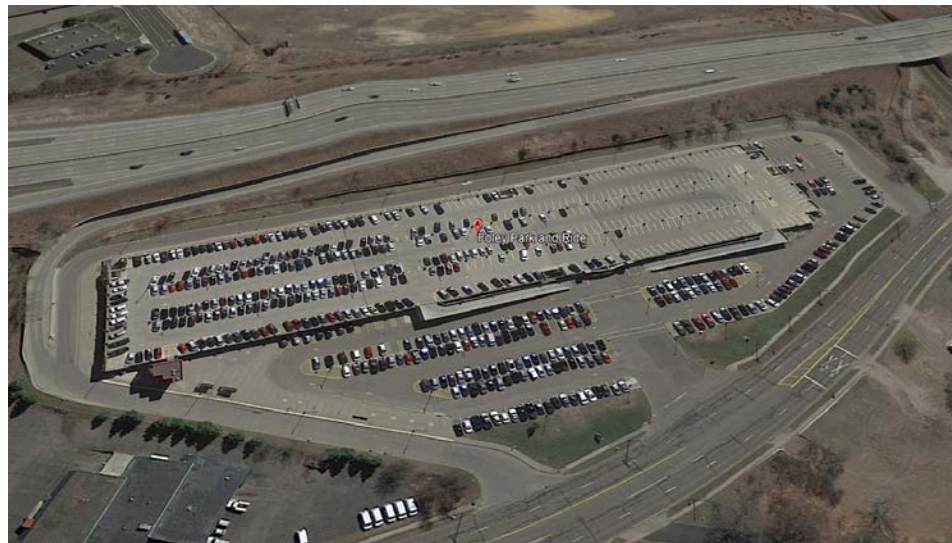
Hwy 610 & Noble Park & Ride



St. Luke's Lutheran Church Park & Ride

Elements of Successful Park-and-Rides

- Frequent transit service
- Fast trip to downtown
- Upstream of congestion
- Downstream of large residential population
- Convenient freeway access



Foley Blvd Park & Ride

Regional Park-and-Ride System Facts

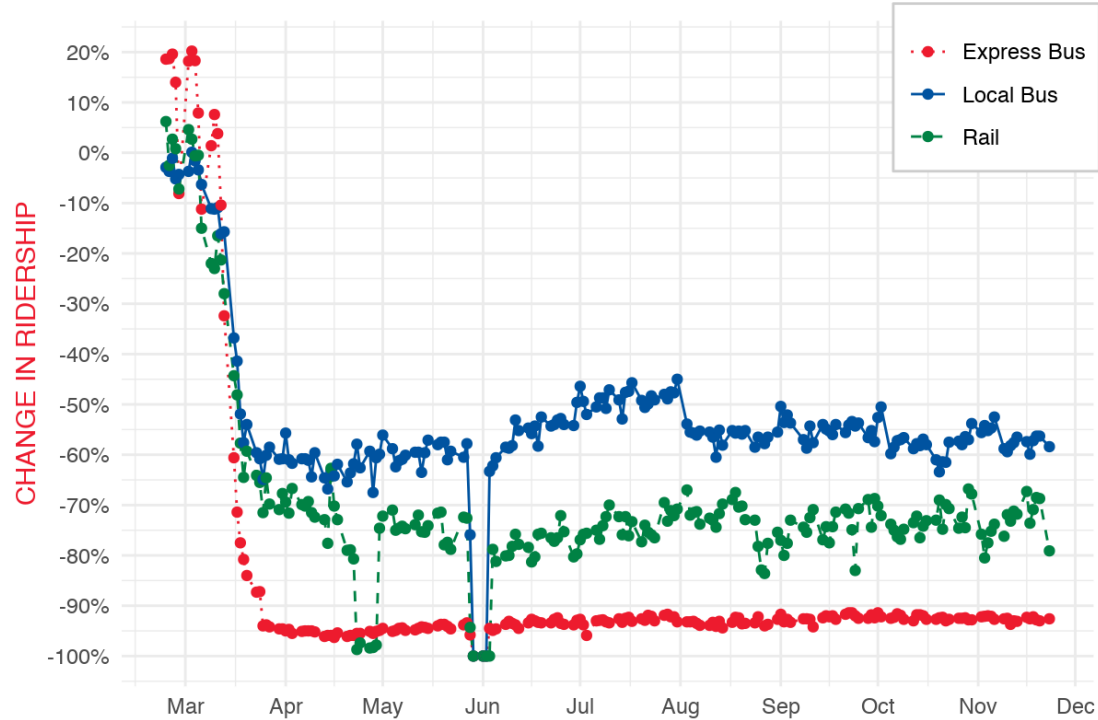
- 33,000 parking spaces in about 100 facilities
- 55-60% of parking spaces are typically utilized
- 4% increase in parking utilization 2008 to 2019
- 7% of 2019 Metro Transit weekday bus boardings occurred at locations with P&R facilities
- 11% of regional bus and rail riders surveyed in 2016 drove and parked at one end of their trip (7% parked at a park-and-ride)

2020 COVID 19 Response

- Governor Executive Orders – Remote Office work
- Adjust to State and Industry Guidance
- Highest ridership service, People reliant on transit
- Balance health and travel needs
- Equity lens in bus and rail service scheduling

Percent Change in Weekday Ridership

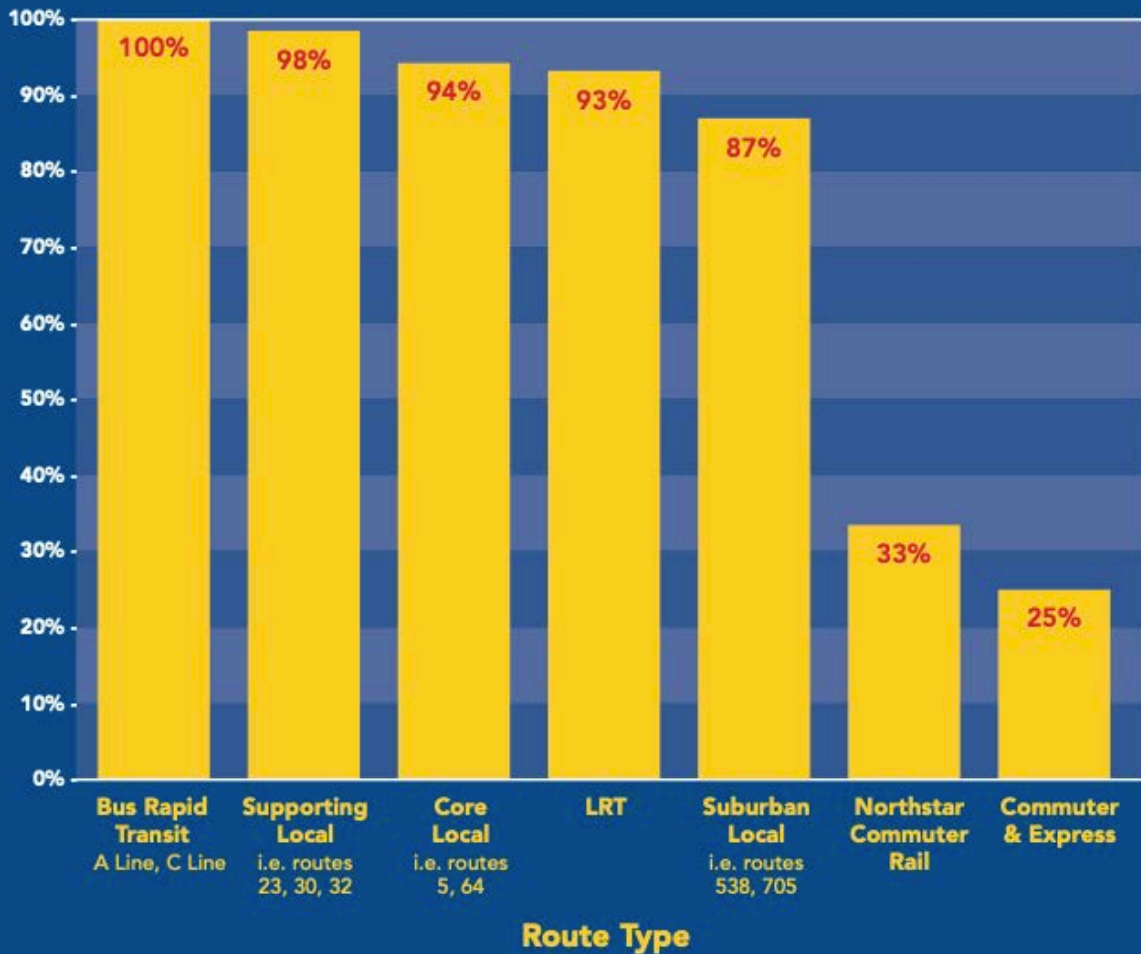
(Compared to average weekday ridership 2/24–2/28)



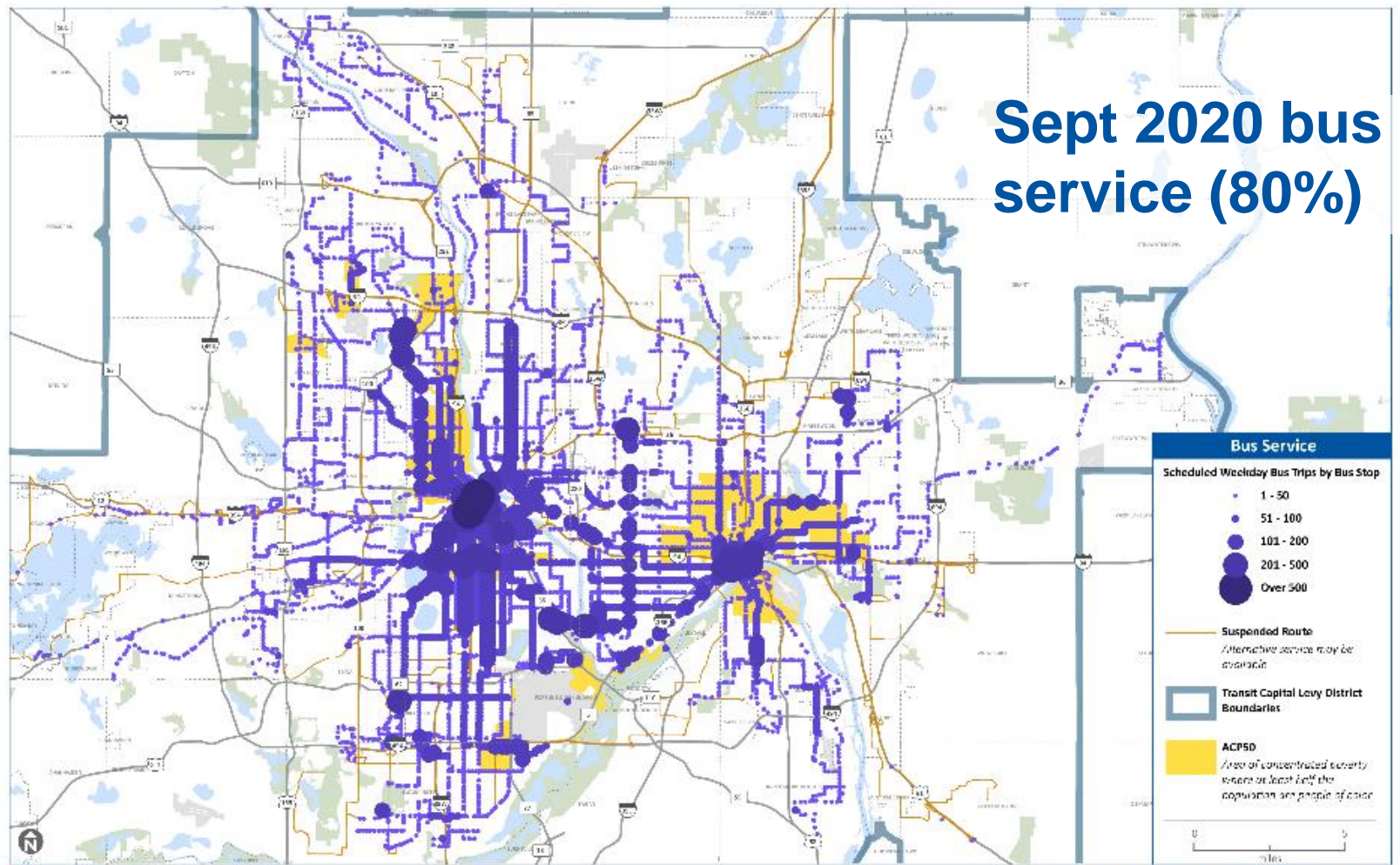
*Preliminary estimates, subject to change



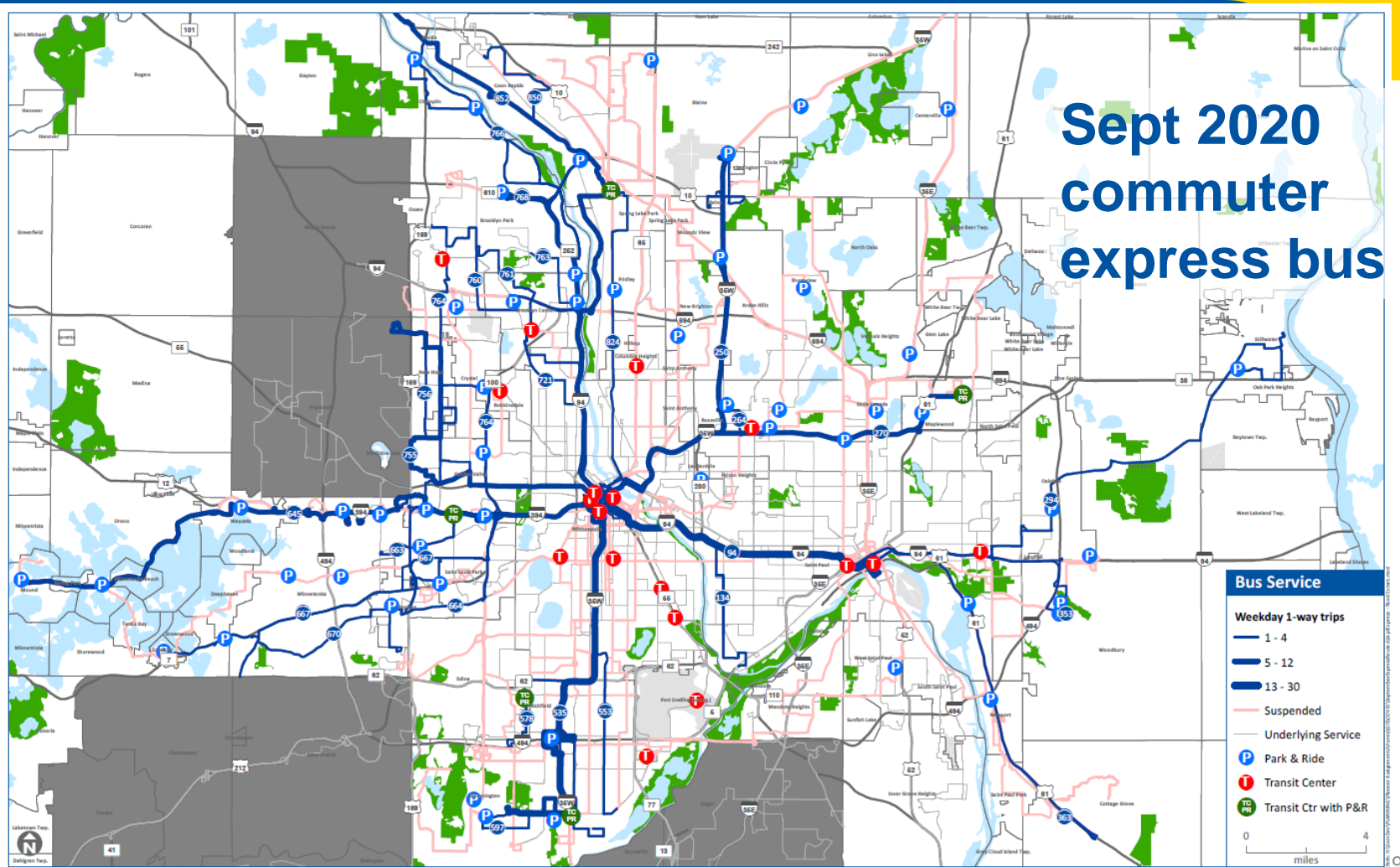
Total Trips, September 2020 vs. September 2019



Sept 2020 bus service (80%)



Sept 2020 commuter express bus



Bus Service

Weekday 1-way trips

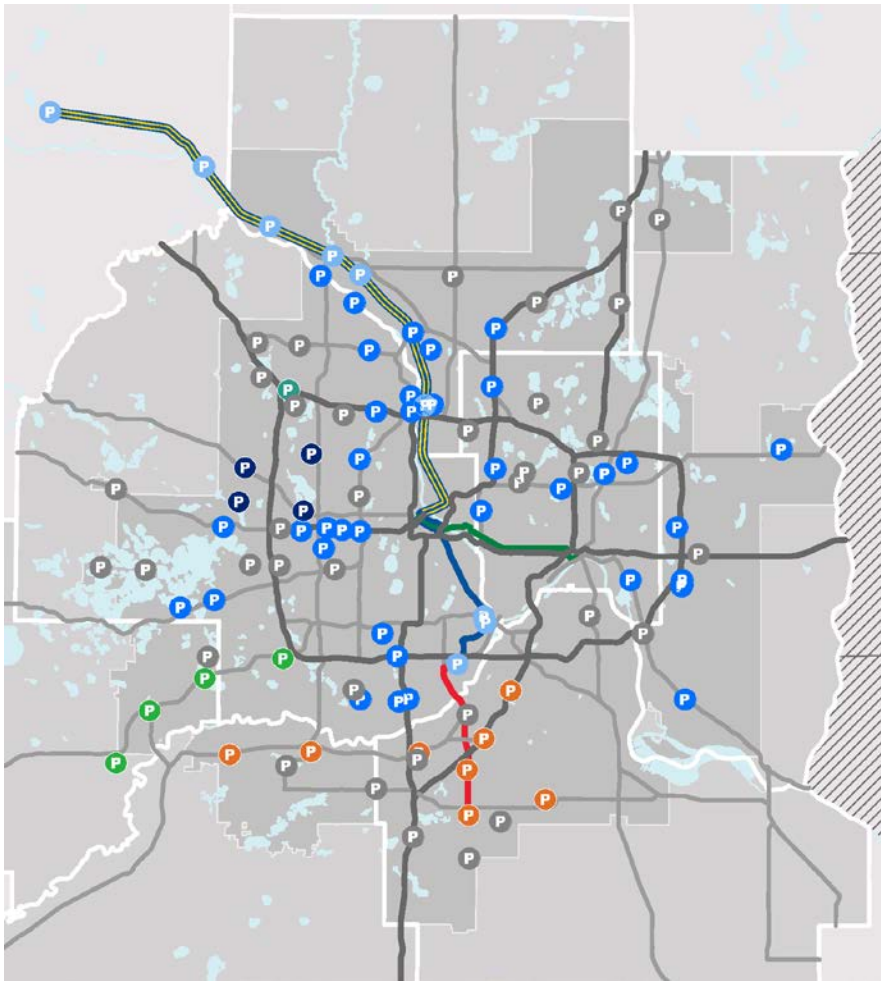
- 1 - 4
- 5 - 12
- 13 - 30
- Suspended
- Underlying Service
- P Park & Ride
- T Transit Center
- TC
PR Transit Ctr with P&R

0 4
miles

Annual Park-and-Ride Usage Survey

- Regional Partnership
- Normally collect usage (vehicle and bicycle) and license plate information (bi-annually) at park-and-ride and park-and-pool facilities
- Information used to manage and plan facilities





Fall 2020 Regional Park-and-Ride Survey

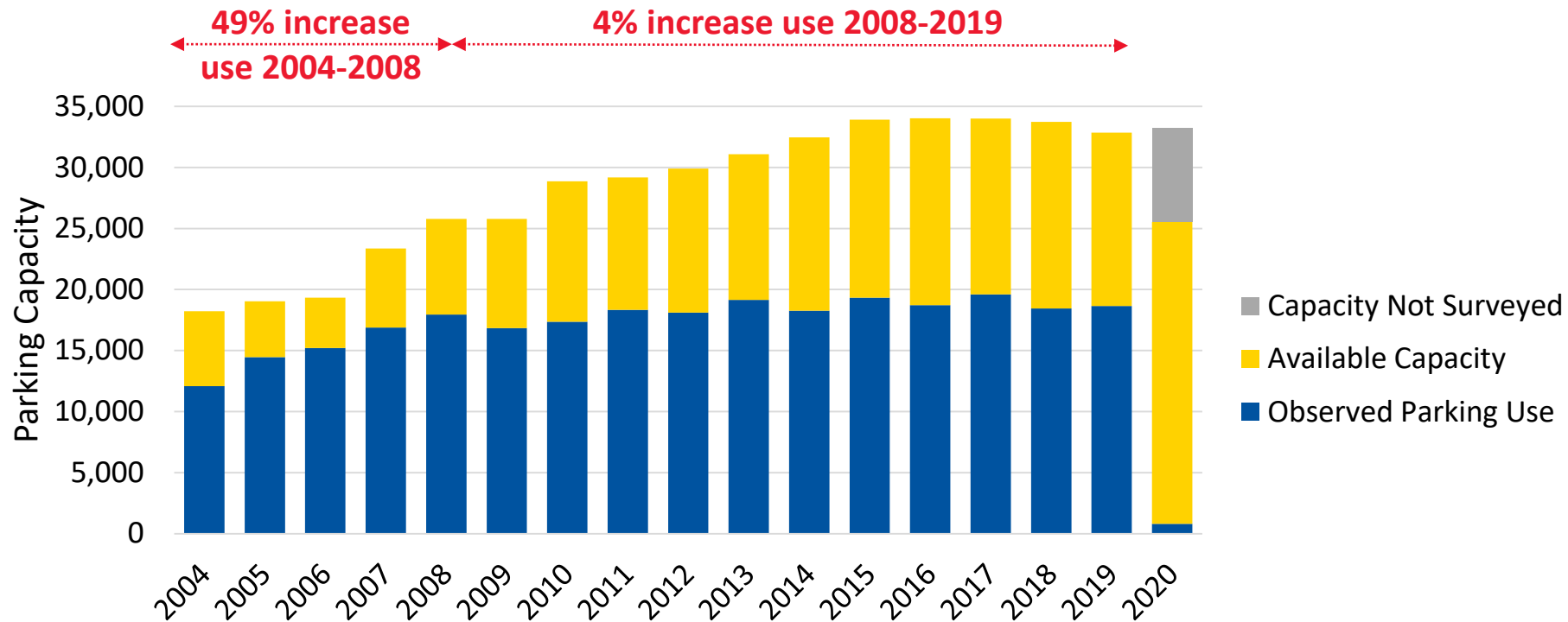
Provider	Facilities	Capacity
Metro Transit Bus	38	10,802
Metro Transit Rail	9	5,602
MVTA	8	4,959
Southwest	4	2,510
Maple Grove	1	924
Plymouth	4	578
Northstar Link	2	166
Total	66	25,541
Not Counted*	36	7,680

* Facilities where commuter express service was suspended at the time of the survey were not counted.

2020 Parking Usage by Transit Provider

Transit Provider	2020 Usage	2019 Usage	% Change
Metro Transit	468	11,757	-96%
Bus	267	8,611	-97%
Rail	201	3,146	-94%
Northstar	83	1,501	-95%
METRO Blue Line	118	1,645	-93%
MVTA	131	3,343	-96%
SouthWest	54	1,468	-96%
Maple Grove	116	1,609	-93%
Plymouth	13	434	-97%
Northstar Link	18	42	-57%
Park-and-Ride Total	800	18,653	-96%

Annual Park-and-Ride Survey 2004-2020



Busiest Facilities in 2020 Parking Survey

Name	2020 Usage	2019 Usage	% Change
Maple Grove Transit Station	116	879	-87%
Burnsville Transit Station	45	1116	-96%
Fort Snelling Station South Lot	43	603	-93%
28th Ave Station	39	649	-94%
Apple Valley Transit Station	38	743	-95%
Fort Snelling Station North Lot	36	393	-91%
I-35W & 95th Ave	35	642	-95%
Foley Blvd	30	873	-97%
SouthWest Station	26	829	-97%

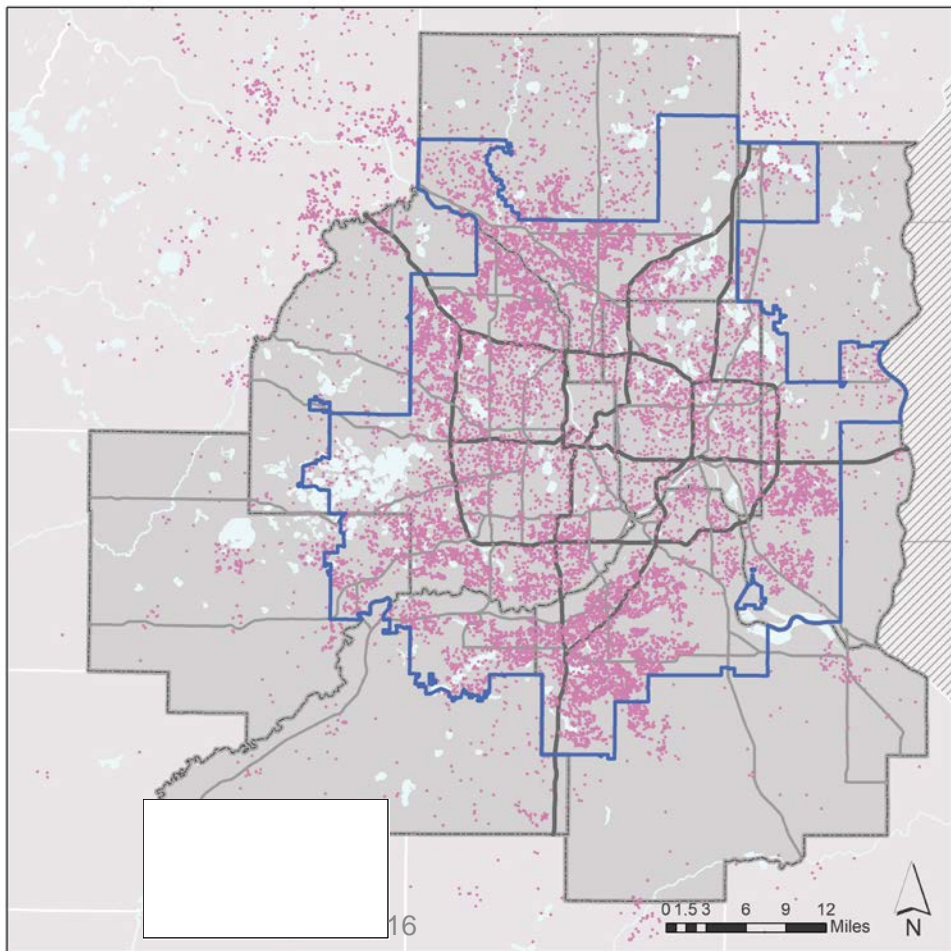
Temporary Park & Ride Closures

Metro Transit-maintained facilities with no transit service operating

1. I-35 & Kenrick Avenue, Lakeville
2. Hwy 7 & Texas Avenue, St. Louis Park
3. I-35E & County Road 14, Lino Lakes
4. I-35E & County Road E, Vadnais Heights
5. Paul Parkway, Blaine

Light Rail facilities with excess parking capacity

6. Ft. Snelling Station South Lot, Minneapolis (North Lot remains open)
7. 28th Avenue Station, Bloomington (1st floor & surface lot remain open)



Park-and-Ride User Origins 2018

Origin Area	% of PR Users
TCLC Residents	79 %
7-county Area Residents	89 %
Anoka County	15 %
Washington County	8 %
Dakota County	19 %
Scott County	5 %
Carver County	4 %
Ramsey County	8 %
Hennepin County	30 %
Total MN Residents	100 %

Comments or Questions?

2020 Park-and Ride Survey available online soon:

<https://metro council.org/Transportation/Planning-2/Transit-Plans,-Studies-Reports/Transit-Transitways/Park-and-Rides.aspx>