

# Rail Systems Post Green Line Service Adjustment



**Daniel Suggs, Director - Rail Systems  
Maintenance**

# Previous condition challenges

- Inability to access right of way creates inefficiencies, risks
- Delays to maintenance, repairs
- Employees must serve as lookouts
- Potential to interfere with in-service trains



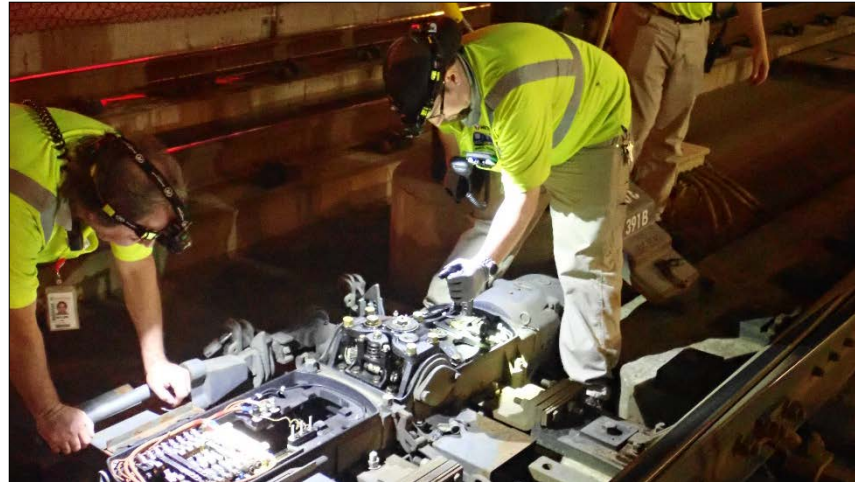
# Track Department

- Interlocking cleaning
- Drain cleaning
- Washington Avenue Bridge
- Street sweeping
- Snow Removal



## Signals Department

- Switch inspections
- Interlocking clean-up
- Wheel counter boxes
- Pedestrian crossings



# Traction Power Department

- Overhead Catenary System (OCS) repairs
- Insulator inspections
- Maintain, repair mainline feeds
- Maintain, clean rail access boxes



## Snow removal challenges

- How we worked to remove snow before



# Snow removal benefits

- What are three ways in which the service adjustment benefits snow removal



# Questions



**Daniel Suggs**

Rail Systems Maintenance Director

[daniel.suggs@metrotransit.org](mailto:daniel.suggs@metrotransit.org)