

# Blending Outreach, Training and Engineering For Accident Avoidance



**Michael Conlon**, Director of Safety | 612-349-7516  
**John Humphrey**, Deputy Chief of Rail Operations | 612 341-5601

# Metro Transit system safety

- **Core Mission**
- **Industry leader**
  - 2017 APTA Gold Award
- **Three key areas**
  - Outreach
  - Training
  - Design





# Metro Transit light rail service

- 77,000+ average weekday boardings
- Special events
- 120+ train operators
- 91 light rail vehicles
- 37 stations (5 shared)
- 167 grade crossings
- 482 trips per weekday



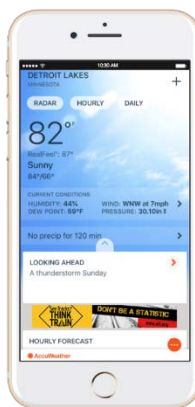
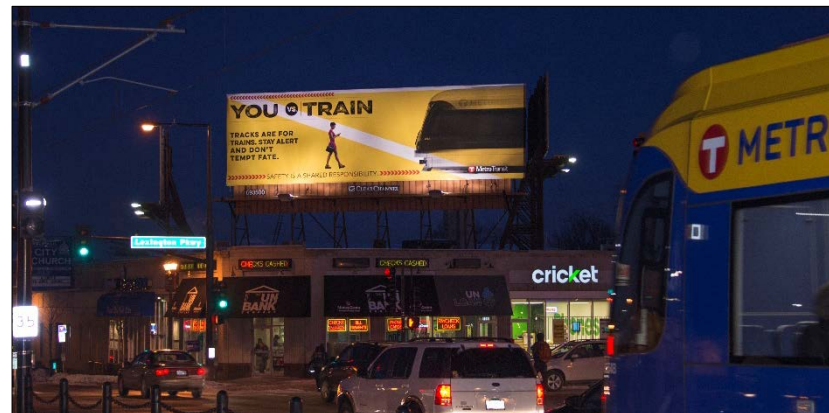
# Metro Transit commuter rail service

- 2,700 average weekday boardings
- 6 locomotives, 18 passenger cars
- BNSF – train operations, track maintenance
- Metro Transit – fleet, facilities maintenance
- 7 stations
- 33 grade crossings



# Rail safety - outreach

- **Marketing**
  - Billboards
  - Radio
  - Online, social media
  - Platforms, trains and buses
- **Operation Lifesaver**
  - Community outreach
  - Rail Safety Week









# Light rail safety - training

- New operators complete 10 weeks of training
  - All begin as bus operators
- Annual rules training
- Daily briefings
- Rule compliance program
- Instructor ride-alongs
- Remedial training
- Annual Rail Rodeo

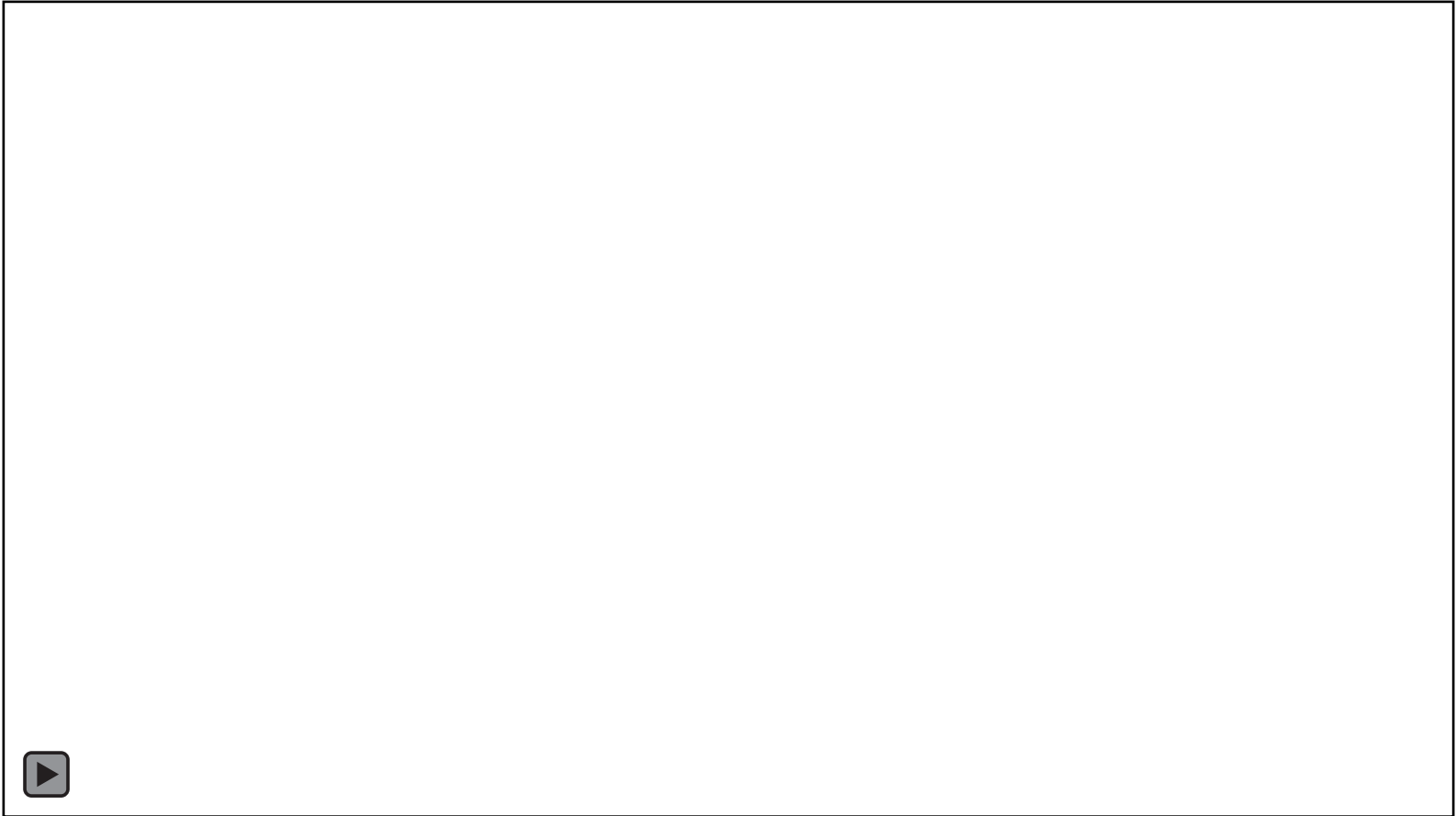


# Light rail safety - design

- Gate arms, warning devices
- Alternating headlights, strobes
- Train approaching lights at grade crossings, traffic signals
- Expanded walkways, railings
- Between-car barriers, door locator tiles









# Pedestrian Blankout signs









# Light rail safety - expansion

- Project office coordination
- Ongoing marketing, outreach efforts
- Continual improvements

