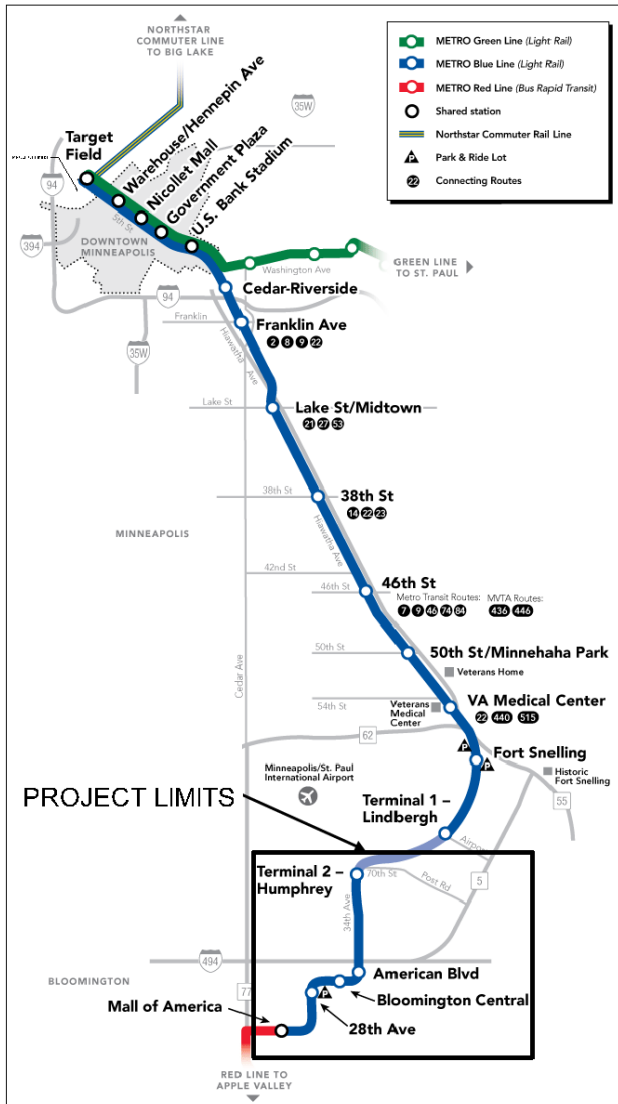


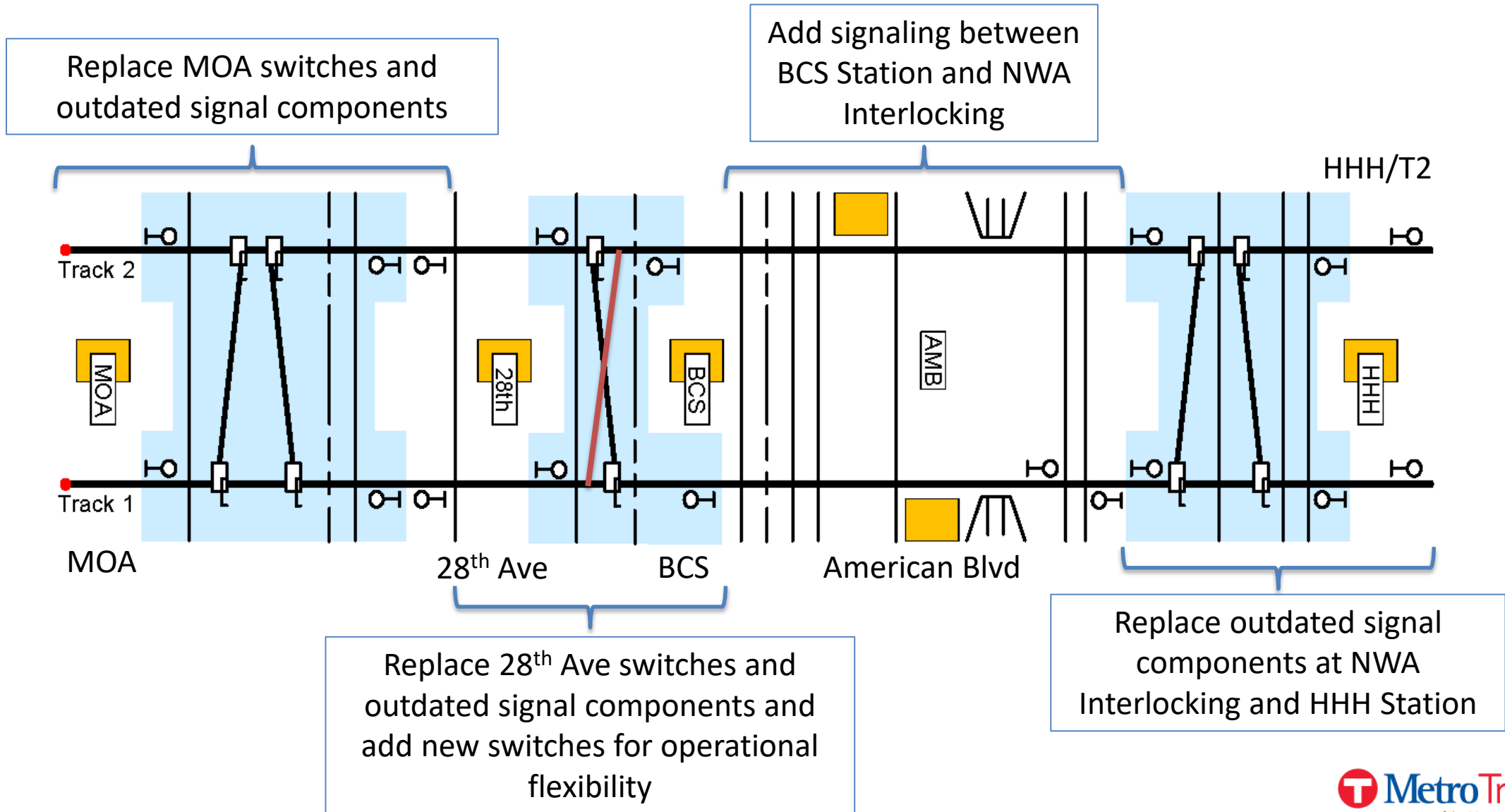
Blue Line Enhancements Phase II
Design and Construction Support Services
Contract 19P281

Senior Staff
March 17, 2020

Ryan Heath
Engineering & Facilities
612-349-7183

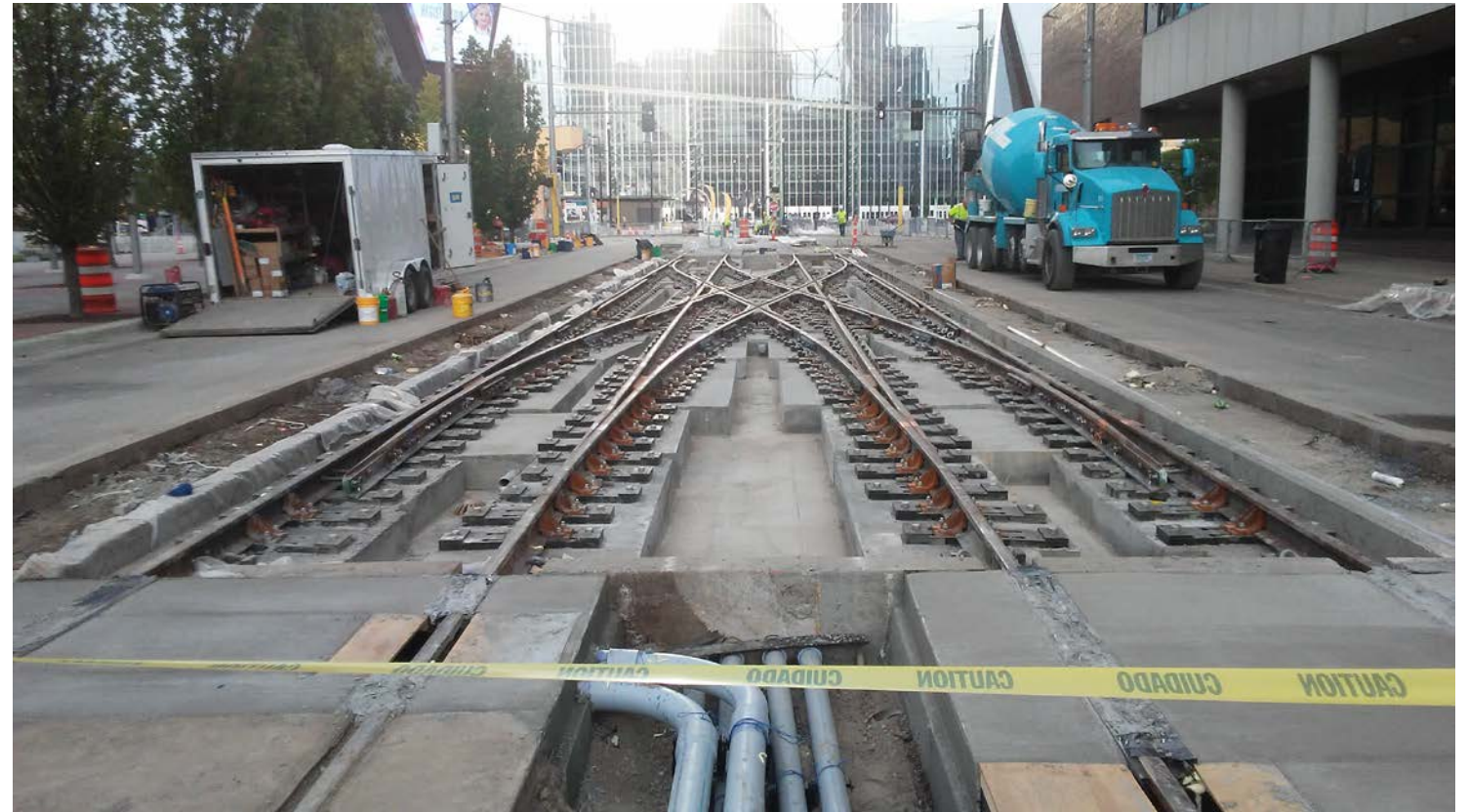


- Phased State-of-Good Repair project for METRO Blue Line
 - Phase I – Downtown Minneapolis completed in 2018
 - Phase II – Bloomington
- Replace outdated signal components and deteriorated trackwork
- Enhance operational flexibility
- Additional updates such as enhanced rail lubrication in sharp curves





Existing embedded track at 28th Ave Interlocking.



Replacement direct-fixation (DF) and ballasted track style has longer lifespan. DF track at Park Ave Interlocking shown above.

- **Schedule:**

- Two construction packages due to SWLRT timing

- April 2020: Execute design contract

- Summer 2022: Field construction for first construction package (Phase IIA)

- Summer 2024: Field construction for second construction package (Phase IIB)

- Spring 2025: BLE Phase II complete

- **DBE:**

- 12% Goal set by OEO – 12.21% commitment by design team

- **Budget:**

Design	\$	6,426,423
Construction	\$	32,300,000
Staffing	\$	900,000
Total	\$	39,626,423

Proposed Action: That the Metropolitan Council authorizes award and execution of contract 19P281 with WSP USA, Inc., in the amount of \$6,426,423 for design and construction support services related to Blue Line Enhancements Phase II.

Questions?