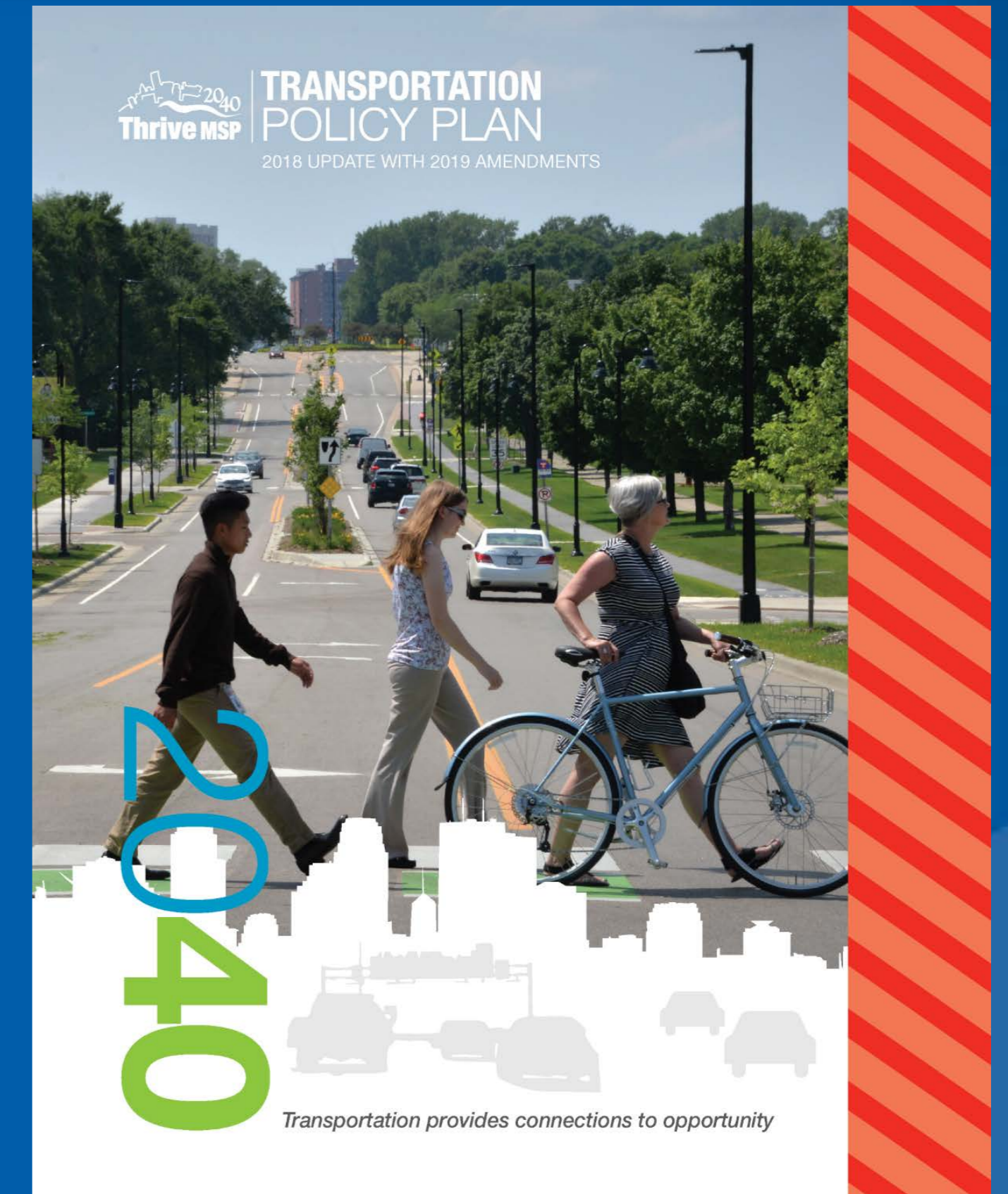


Adopt 2020 Update to the 2040 Transportation Policy Plan



Council Transportation Committee

11-09-2020



TPP Timeline

6/25 Public comment period begins

7/27 Public hearing at Transportation Committee

8/10 Public comment period ends

8/11 to 9/11 Develop public comment responses and report

9/14 to 10/9 Revise TPP in response to comments with TAB and Council input

10/21 Transportation Advisory Board Recommendation that Council Adopt

11/09 Transportation Committee Recommendation

11/18 Council adopts *2040 Transportation Policy Plan (2020 Update)*

Outreach and engagement

- Web announcement and web page notice
- GovDelivery email announcement
- Outreach to key business, advocacy, cultural, work force, education, neighborhood organizations
- Social media – Facebook, Twitter, Instagram
- Star Tribune classified advertising
- Public hearing – WebEx event
- 215 Commenters, over 400 Comments

Comments and key engagement themes

- Three key themes:
 - Eliminate road expansion and invest in transit and active transportation to mitigate climate change and lower vehicle miles traveled
 - Black, brown, indigenous communities and low income most impacted by climate change; plan and invest to mitigate (transportation) inequities
 - Promote best practice in parking policy to influence climate change
- Additional Comments received:
 - Safety and security on transit
 - Transit investment priorities (ABRT, other corridors)
 - Support for bicycle and pedestrian investment
 - Lack of support for LRT
 - Support for bus fleet electrification

Changes in Response to Public Comment

- Added text to Overview emphasizing that much of regional transportation spending is inflexible
- Added text in Overview and Highway chapter clarifying that travel demand management (TDM) and land use solutions are first priority for solving roadway mobility issues
- New Regional TDM Study to be completed 2021-2022
- Added text to Overview recognizing “success” of teleworking (TDM) during COVID pandemic in reducing highway congestion
- New *Equity Evaluation of Regional Transportation Investment study* to be completed 2021-2022
- Many additional smaller changes (see Summary of Proposed Changes document)

Other Work Program Studies

- Accelerating Electric Vehicle Adoption Study
- Inventory and Planning Scenarios for Greenhouse Gas Emissions (led by Community Development)
- Assessment of Regional Congestion Mitigation Philosophy
- Microtransit and Shared Mobility Access to Transit
- Mobility Hub Planning Guide
- RBTN Bikeway Facility Guidelines and Measures Study
- Industrial Land Atlas Mapping Tool (led by Community Development)

Recognizing COVID-19 Outbreak in TPP

- Language recognizing the COVID-19 Outbreak incorporated into Overview, Highways, Transit, Bicycle and Pedestrian, Aviation, Equity and Environmental Justice and Work Program chapters
- Acknowledge the short and potential long term impacts the outbreak will have on travel behavior, transportation revenues and spending priorities for the transportation system
- Acknowledge that understanding the impacts will take time and significant analysis
- Commits to three major Work Program items related to analyzing impacts on travel behavior; highway and transit revenues and spending; and the aviation system

Thank you

Amy Vennewitz

Deputy Director MTS

amy.vennewitz@metc.state.mn.us

