



Service changes Dec 2021-August 2022

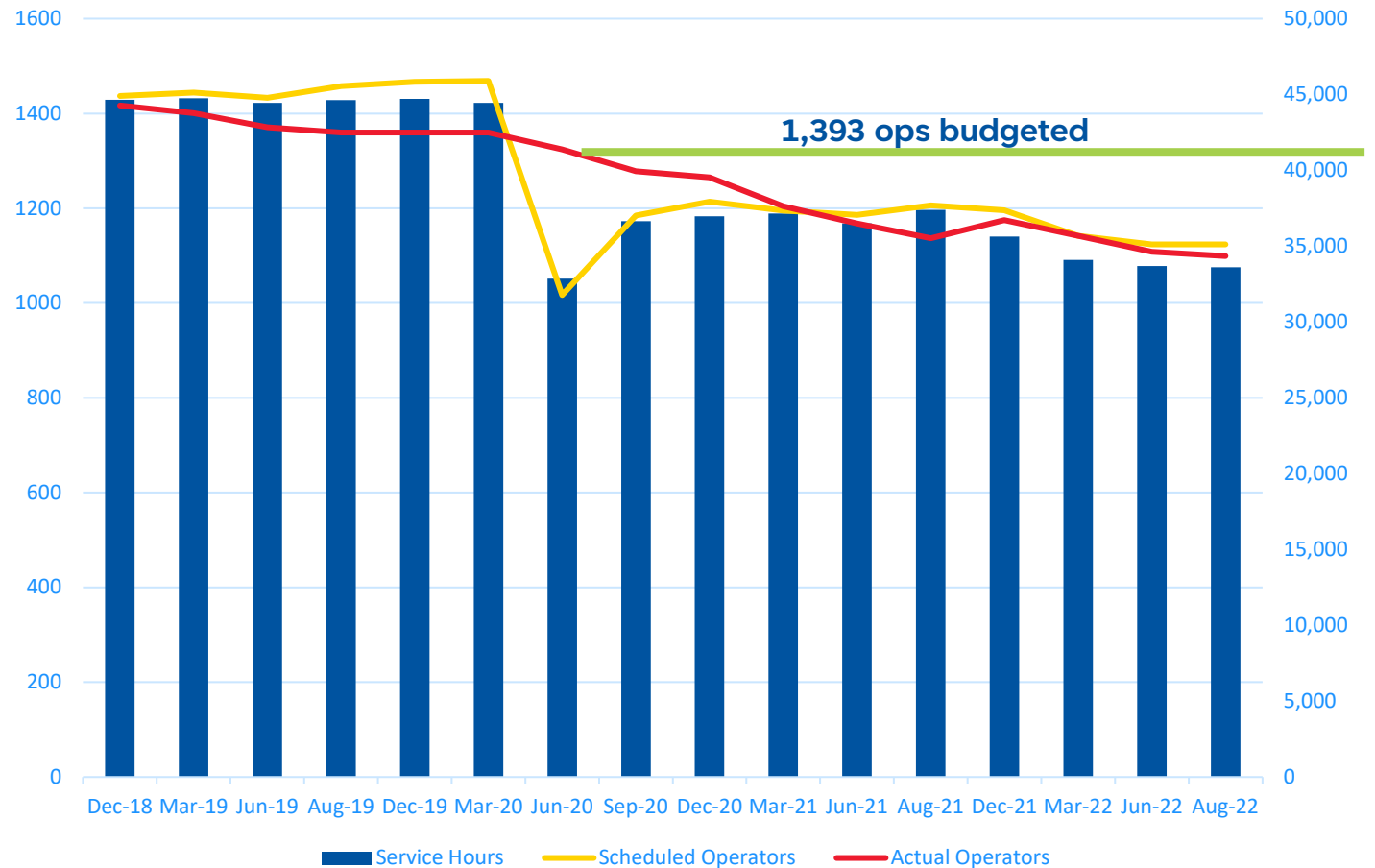
Brian Funk | Chief Operating Officer

Adam Harrington | Director Service Development

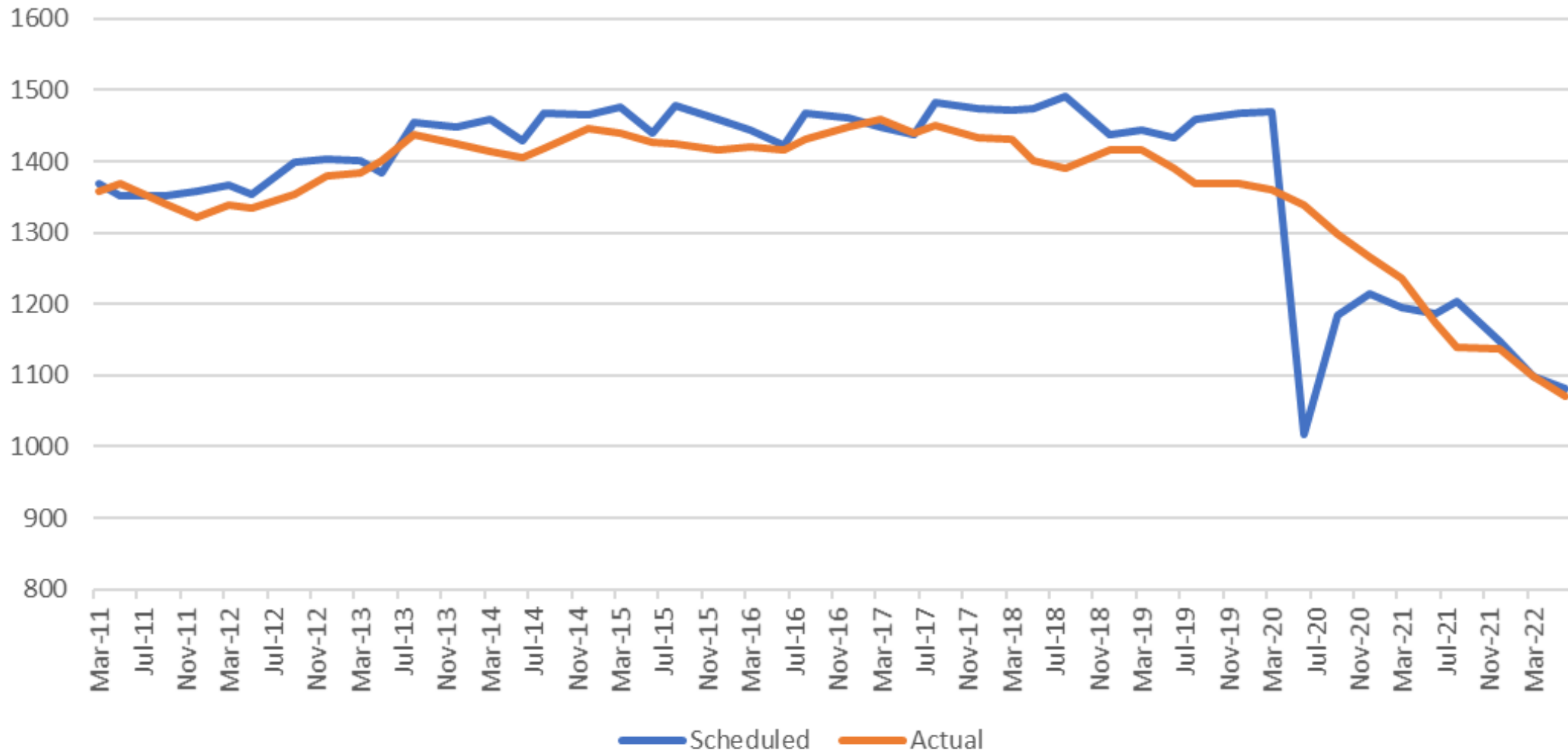
Metro Transit Bus operator workforce and service

August 2019, 100% system service hours

Jun-20	74%
Sep-20	82%
Dec-20	83%
Mar-21	83%
Jun-21	82%
Aug-21	84%
Dec-21	80%
Mar-22	76%
Jun-22	75%
Aug-22	75%



MT Bus Operators Scheduled vs. Actual 2011-2022



State Fair 2022

Every Day Aug. 26 - Sept. 6

Weekday service begins at 9 a.m. Weekend & Labor Day service at 8 a.m. Last return bus is midnight.

Pay with Cash, Metro Transit app or Bus Bargain Ticket

Service approximately every 30 minutes

1 Minnetonka — I-394 & Co. Rd. 73 Park & Ride, SW corner of I-394 & Co. Rd. 73

2 Bloomington — 30th Ave. Park & Ride

Note: No service at 82nd St. & 24th Ave. S. site

3 Cottage Grove — Cottage Grove Park & Ride, along Hwy. 61 on W. Point Douglas Rd. between 80th St. and Jamaica Ave.

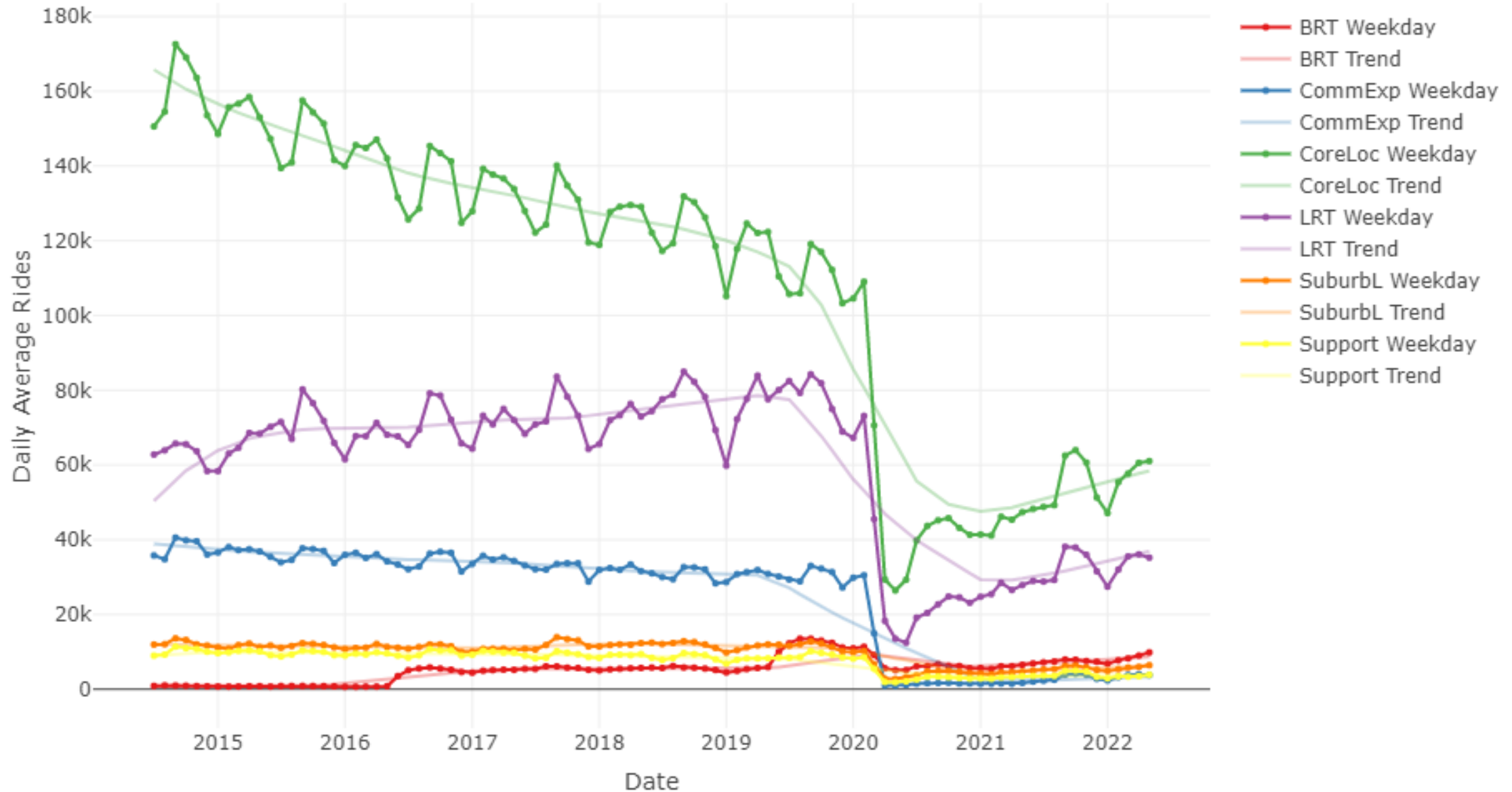
Hours of operation*

- **Weekday service:**
Buses operate **9 a.m. – midnight** at most locations
- **Weekend & Labor Day Service:**
Buses operate **8 a.m. – midnight** at most locations

*See Individual locations for times.



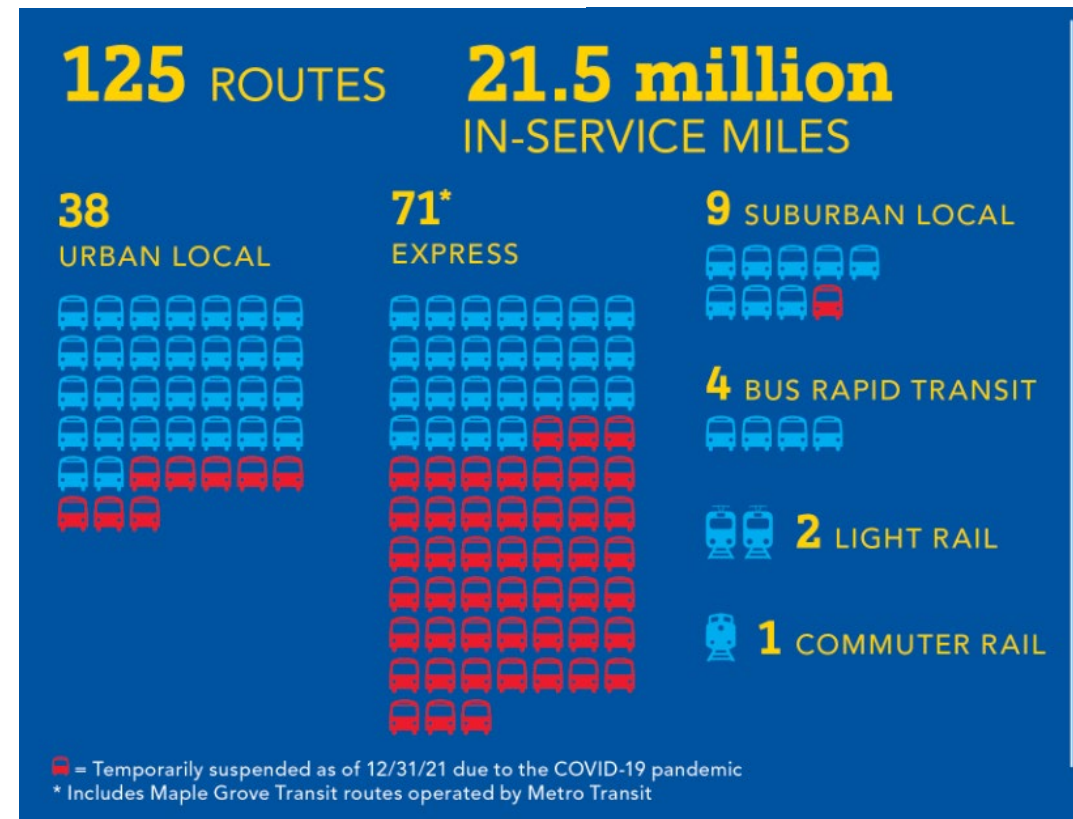
Trend Over Time of Route(s): , BRT, CommExp, CoreLoc, LRT, SuburbL, Support



Guiding principles

- Maintain the reliability of our scheduled service
- Identify service where customers have an alternative (route, frequency or auto)
- Minimize ridership impact/capacity
- Preserve frequent transit service
- Evaluate service changes with an eye towards reducing impact on communities of color and low income

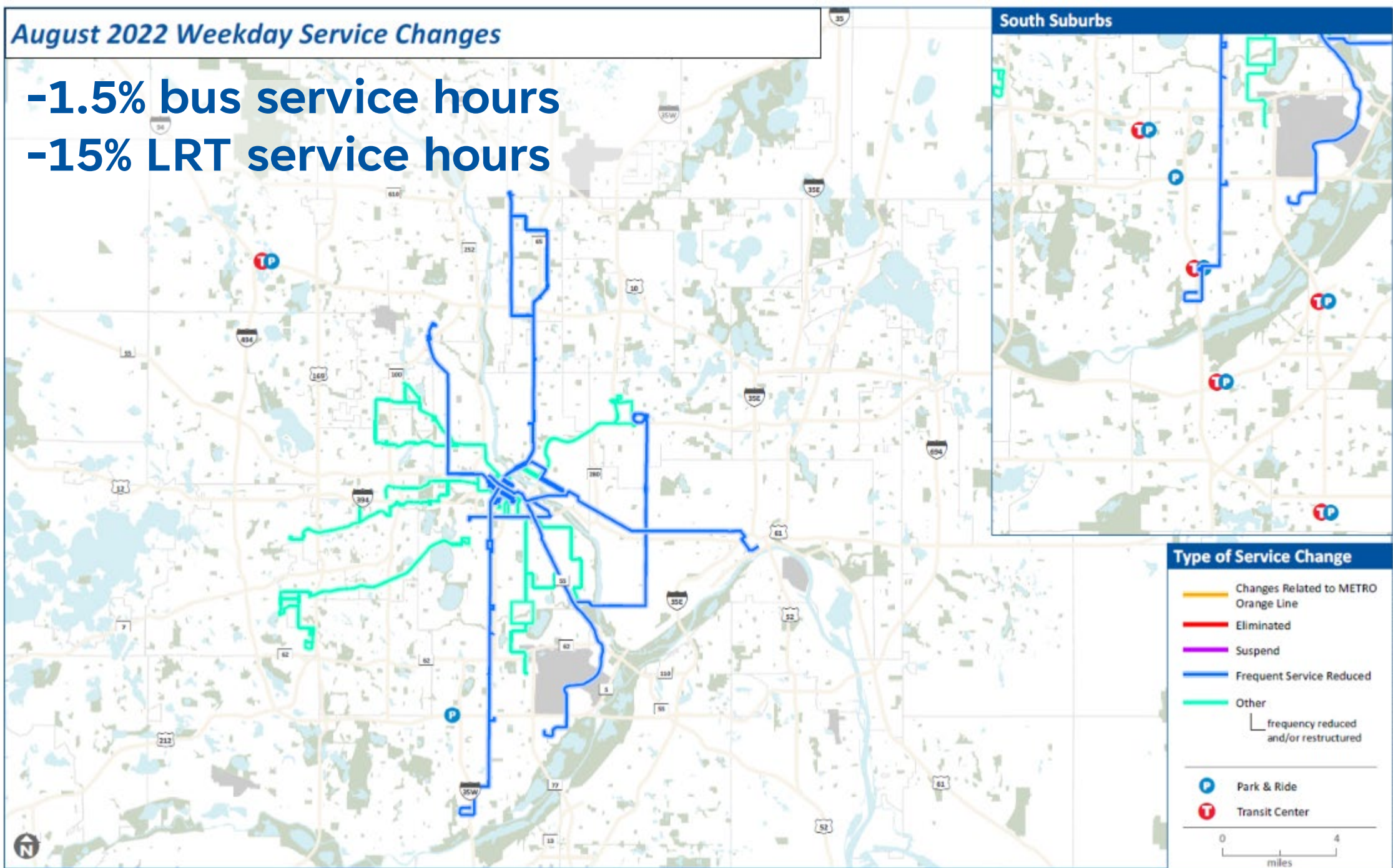
Metro Transit



- 164 routes, including 39 contracted
- 67 suspended routes, including 12 contracted

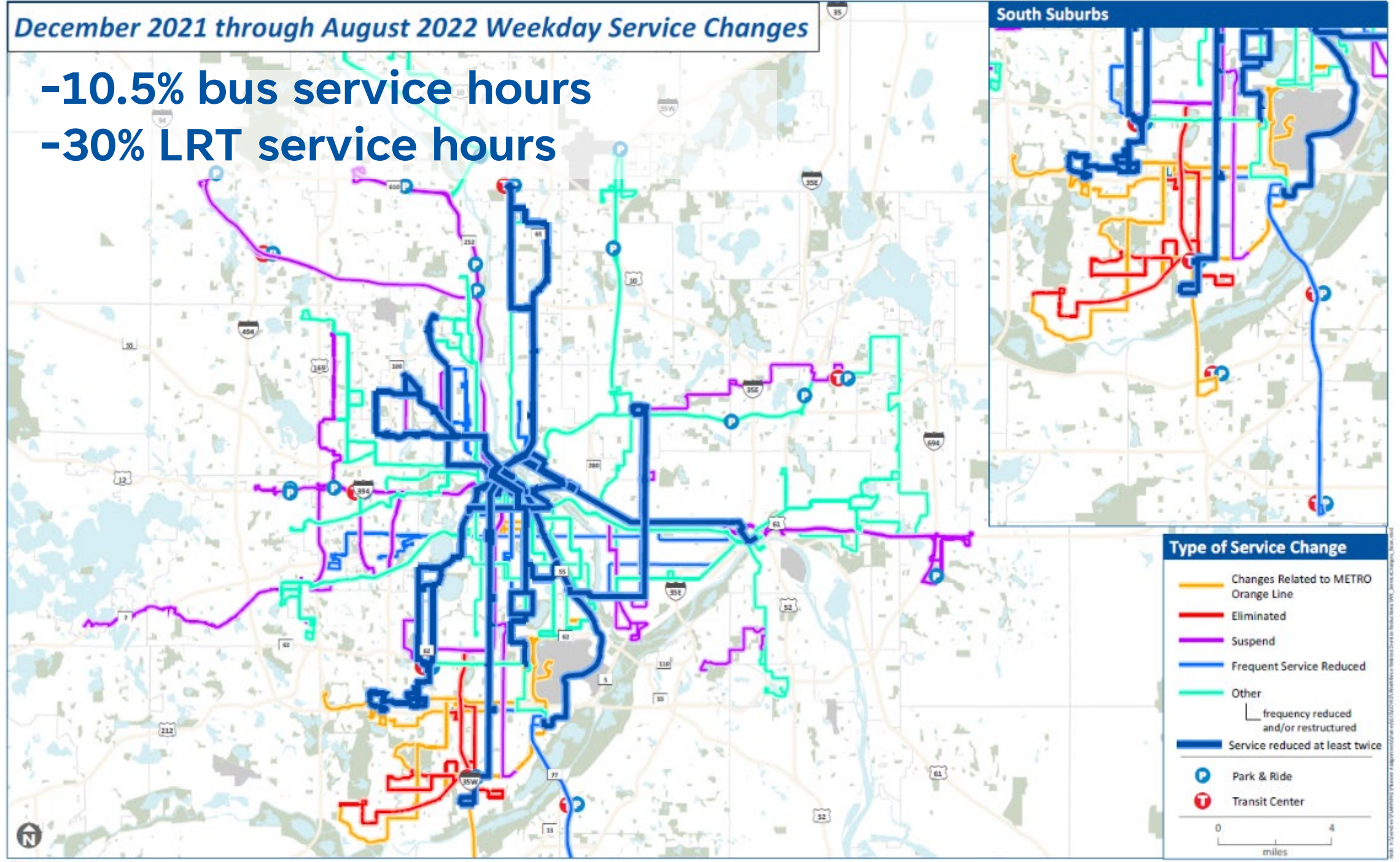
August 2022 Weekday Service Changes

-1.5% bus service hours
-15% LRT service hours



December 2021 through August 2022 Weekday Service Changes

-10.5% bus service hours
-30% LRT service hours

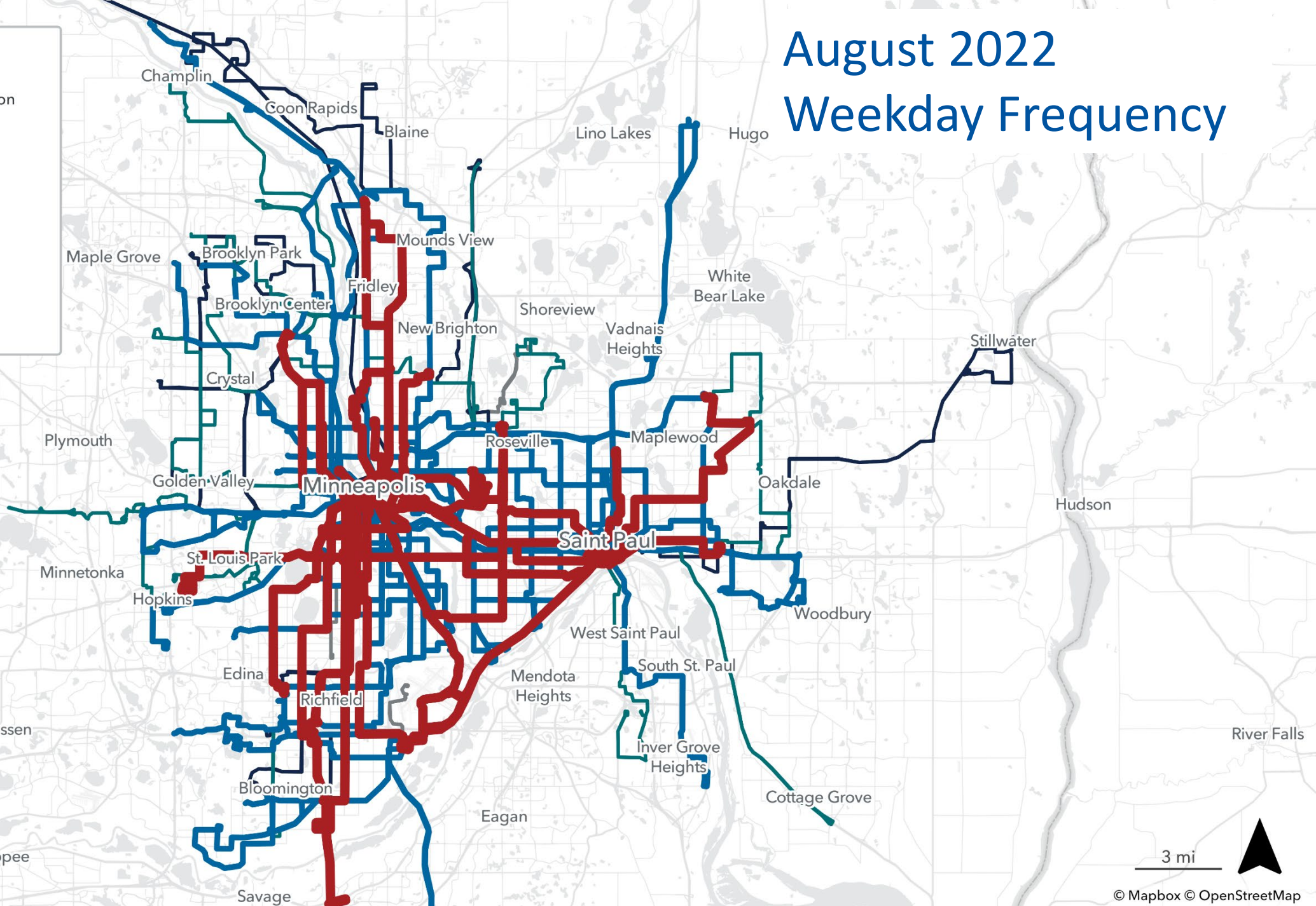


August 2022 Weekday Frequency

Transit lines

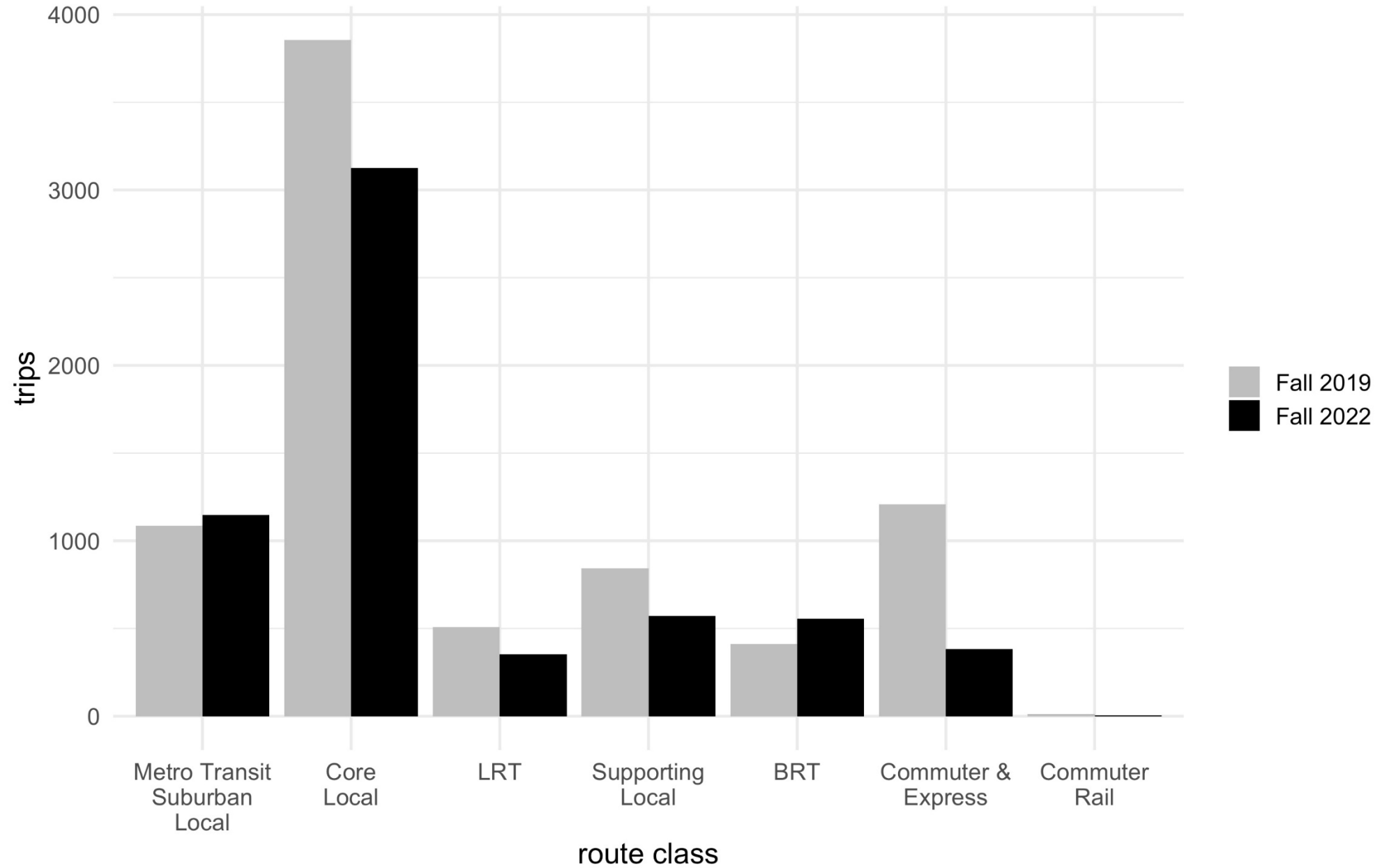
Routes shown by frequency at 16:30 on weekdays.

- 15 min or less
- 15 min - 30 min
- 30 min - 60 min
- Over 60 min
- No service

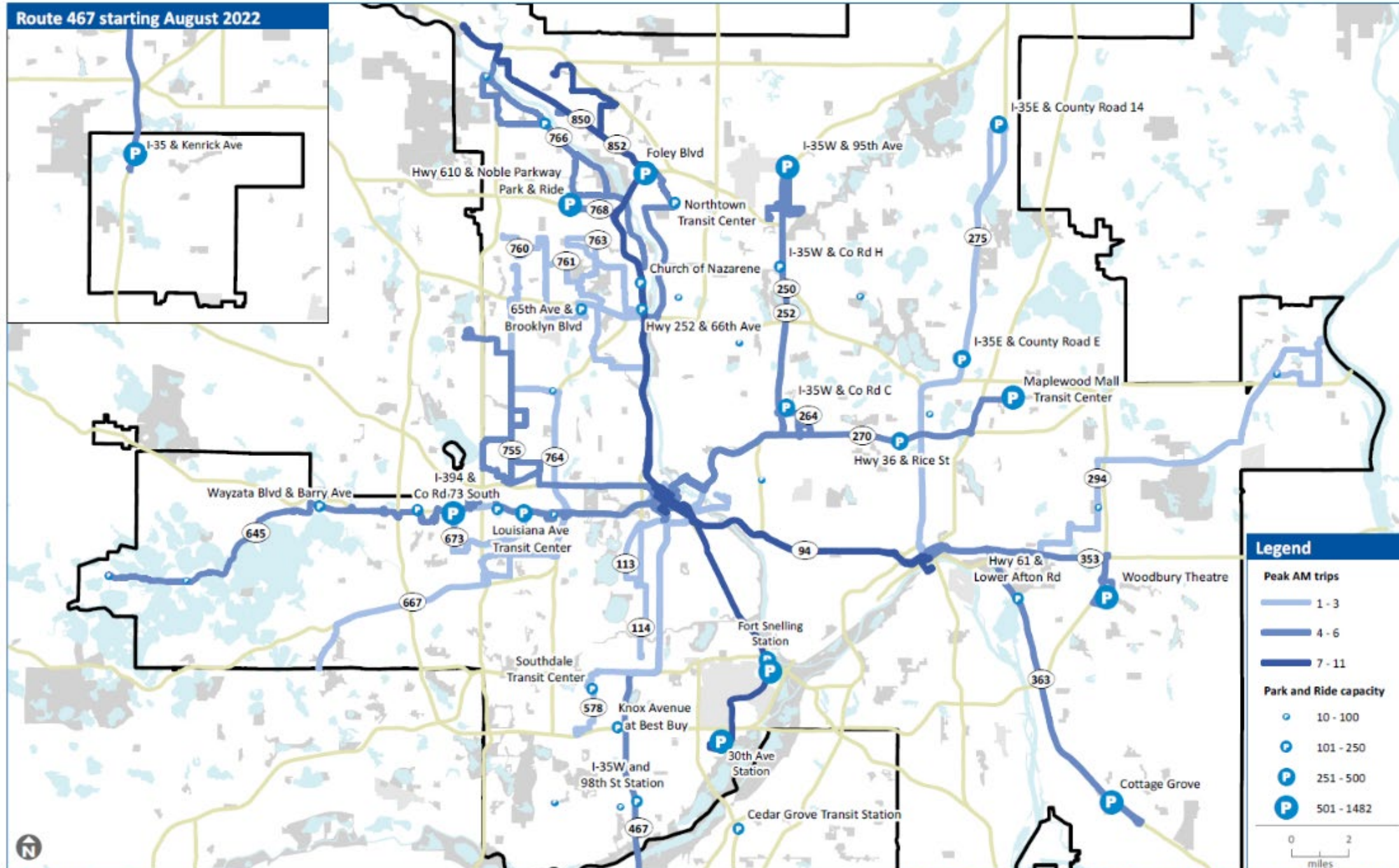


Trip count by route classification

weekday schedule



Route 467 starting August 2022



Legend

Peak AM trips

- 1 - 3
- 4 - 6
- 7 - 11

Park and Ride capacity

- 10 - 100
- 101 - 250
- 251 - 500
- 501 - 1482

0 2
miles

August 20 schedule changes info

- [News & Events \(metrotransit.org\)](https://metrotransit.org)



- Full schedules August 8
- Route 22 speed and reliability improvements
- School trip adjustments

Quarterly service changes begin Aug. 20



On Saturday, Aug. 20, Metro Transit will make changes to transit service throughout the metro. As we do each quarter, we analyze our resources and ridership trends. Metro Transit continues to face unprecedented driver shortages, resulting in cancelled trips that inconvenience customers. These service adjustments will help balance customer demand with our limited resources, ideally leading to fewer cancelled trips.

We will maintain the reliability of our scheduled service using these criteria:

- Evaluate service changes with an eye towards reducing impact on communities of color and low income
- Identify service where customers have an alternative (route, frequency or auto)
- Minimize ridership impact
- Preserve frequent transit service where most needed