



# METRO E Line Final Corridor Plan

Kyle O'Donnell Burrows | Planning Manager, Arterial BRT



# Proposed action 2022-134

- That the Metropolitan Council approve the Final E Line Corridor Plan to establish the number and location of stations included in the project.



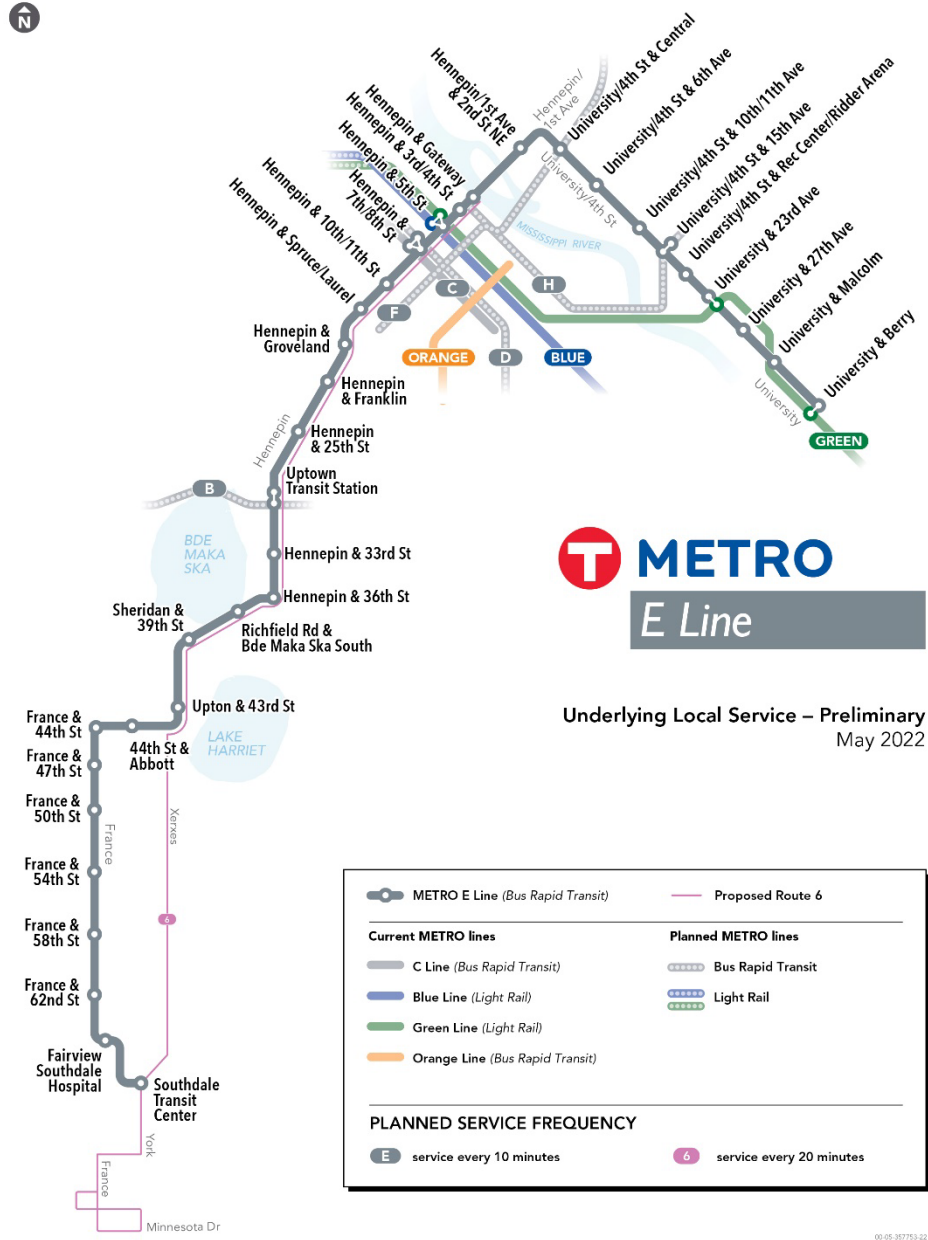
Corridor Plan  
May 2022

# E Line project development schedule

- Corridor Study to define E Line alignment: 2018 – 2019
  - Council approved alignment in January 2020 (Business Item 2020-14)
- Corridor Plan
  - Release Draft Corridor Plan: September 2021
  - Public comment period: September 20–October 31
  - Release Recommended Corridor Plan: March 2022
  - Public comment period: March 9–April 8
  - **Final Corridor Plan (Council action to approve): May 2022**
- Engineering: Fall 2022 – Late 2023
- Construction: 2024 - 2025

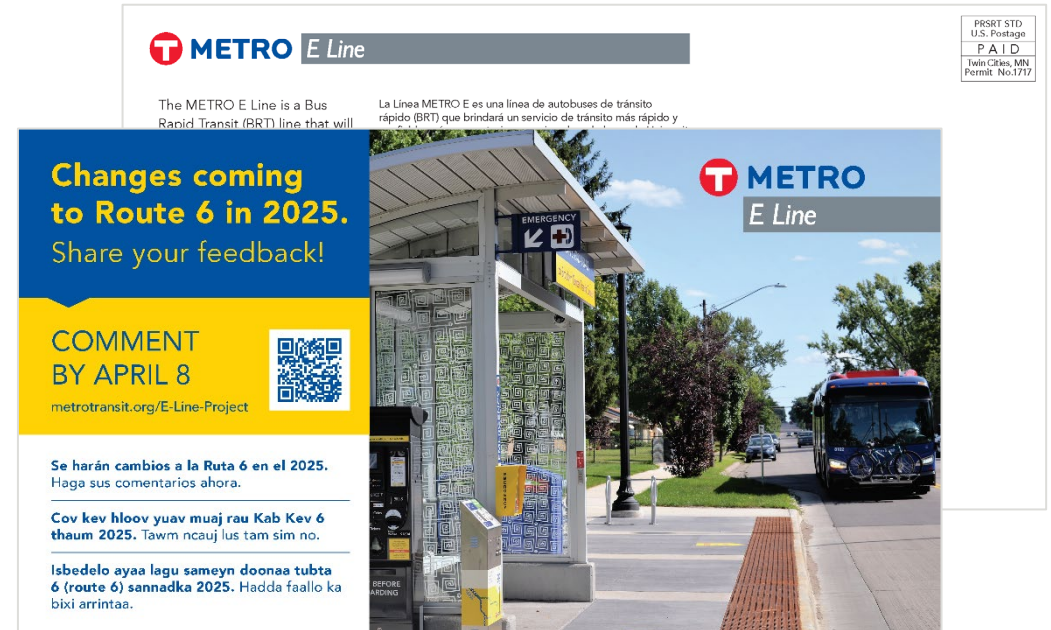
# Corridor plan contents

- Locations: station intersections and locations of platforms within each intersection
- Corridor context:
  - Concept bus service plan
  - Priorities for bus priority treatments and bus only lanes to meet speed and reliability goals



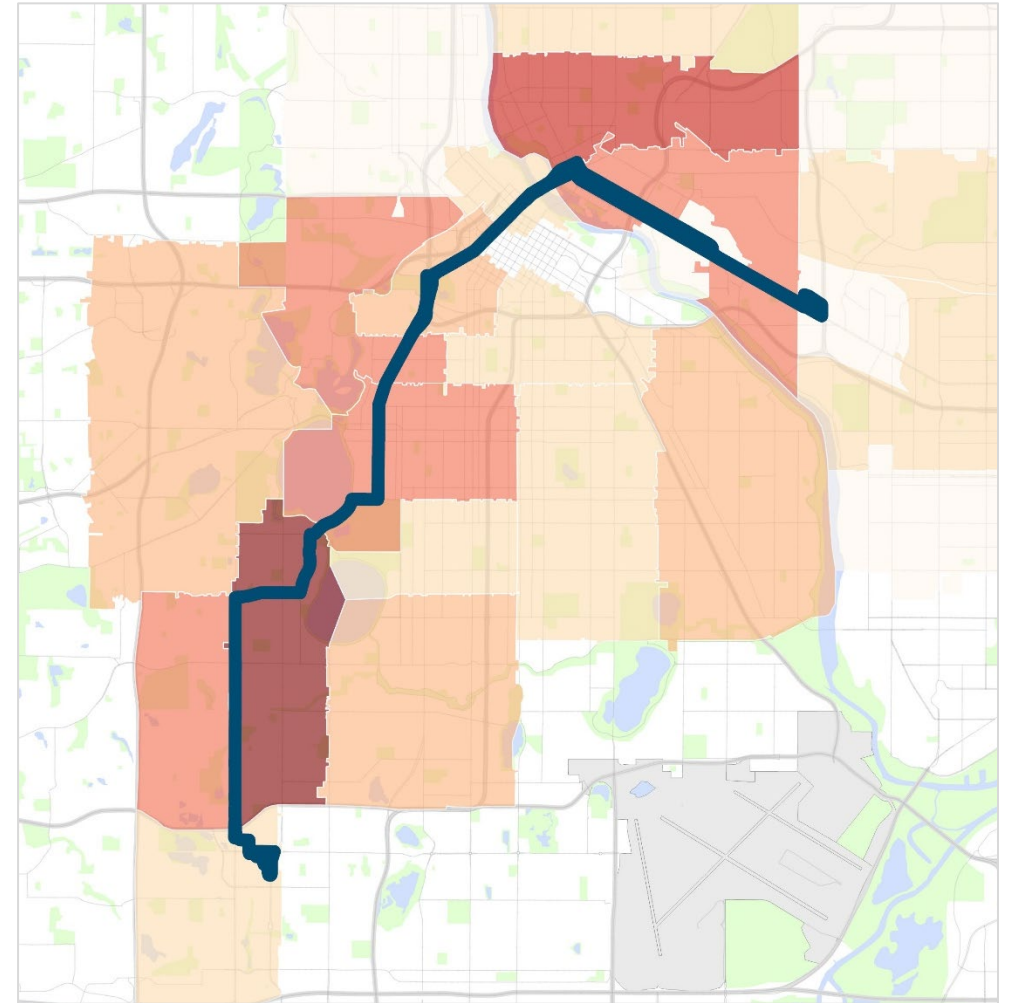
# Recommended Corridor Plan engagement

- Public comment period open **March 9 – April 8**
- Focus on reaching future E Line station neighbors
  - Door knocking, outreach at key bus stops and station locations
  - Partner with community organizations and neighborhood groups
- Corridor-wide engagement
  - Project website with key information and station concepts
  - Direct mailing (postcard)
  - Email to subscribers and Rider Alerts
  - Social media
  - Project fact sheets in Spanish, Somali, and Hmong



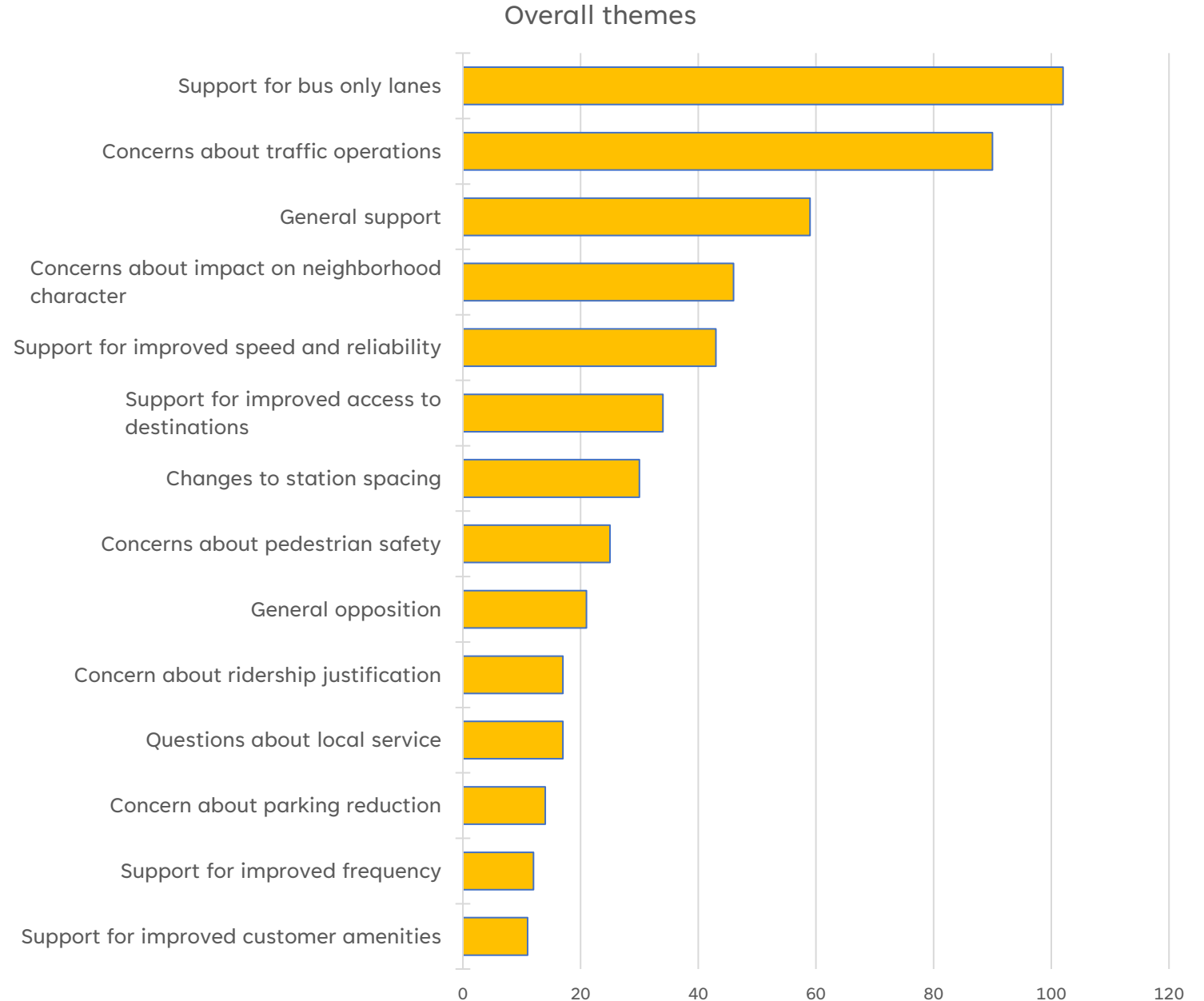
## Recommended Corridor Plan feedback demographics

- Received 359 total individual email and survey responses on recommended plan
- Recommended demographics similar to draft corridor plan
- Majority of survey respondents have home ZIP code within the corridor
- Majority of survey respondents are white (88 percent)
- Majority of survey respondents have higher than average household incomes (54 percent over \$100k)



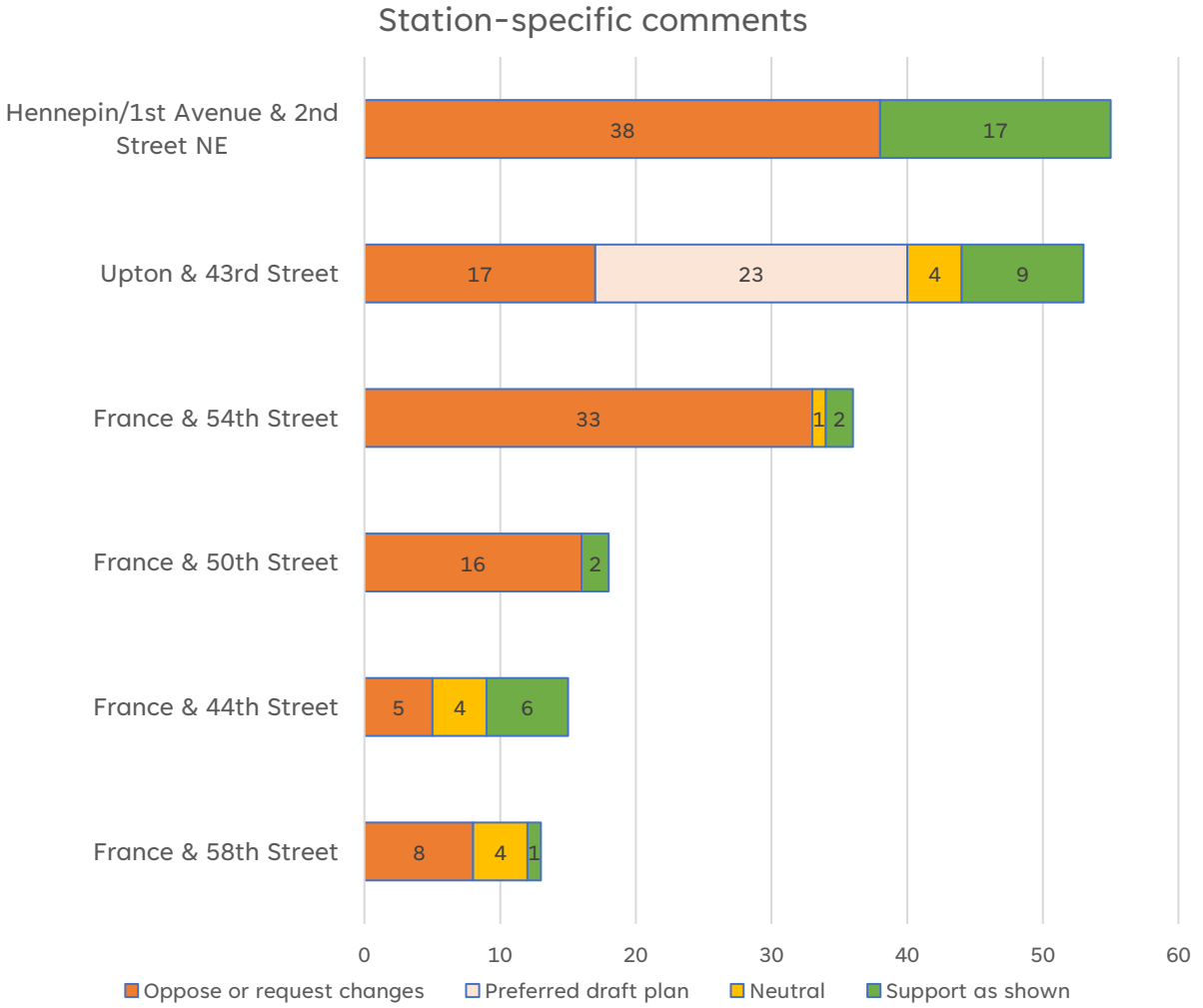
# Overall themes

- Key supporting themes
  - Support for bus only lanes
  - Improved speed and reliability
  - Access to destinations
- Key concerns
  - Traffic operations
  - Neighborhood character
  - Stations spaced too close or too far apart



# Station-specific comments

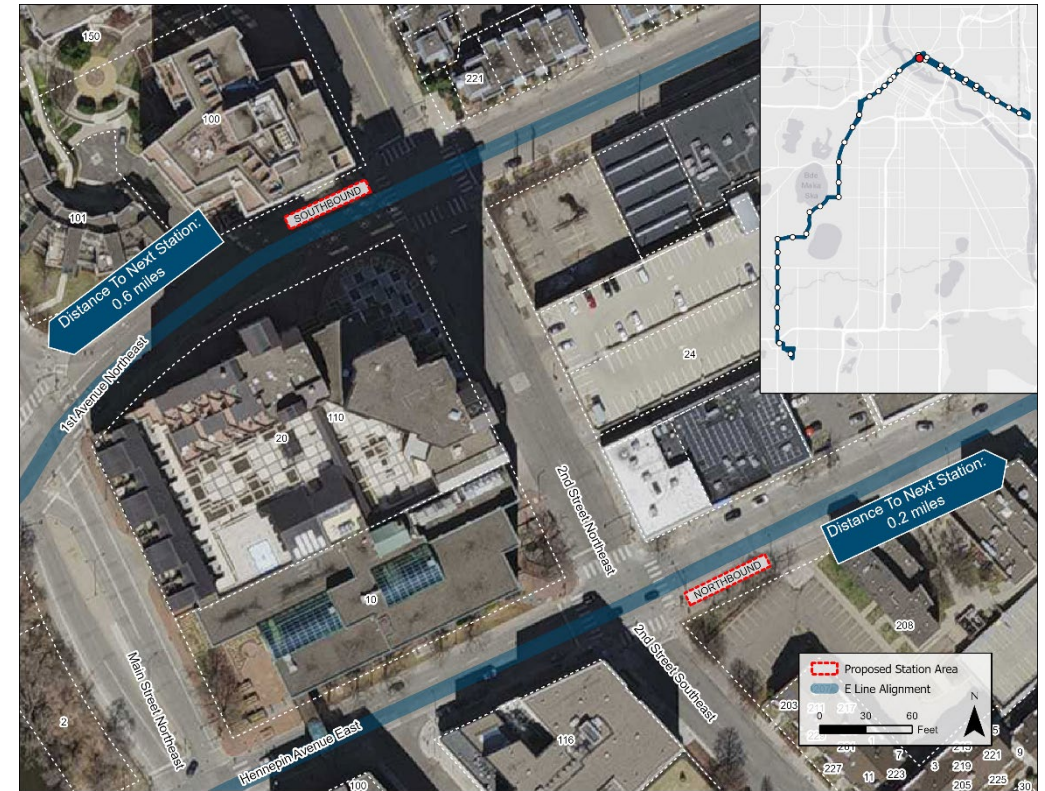
- Stations with high degree of interest consistent between draft and recommended corridor plan
- Metro Transit staff and our partner agencies have reviewed feedback received in detail





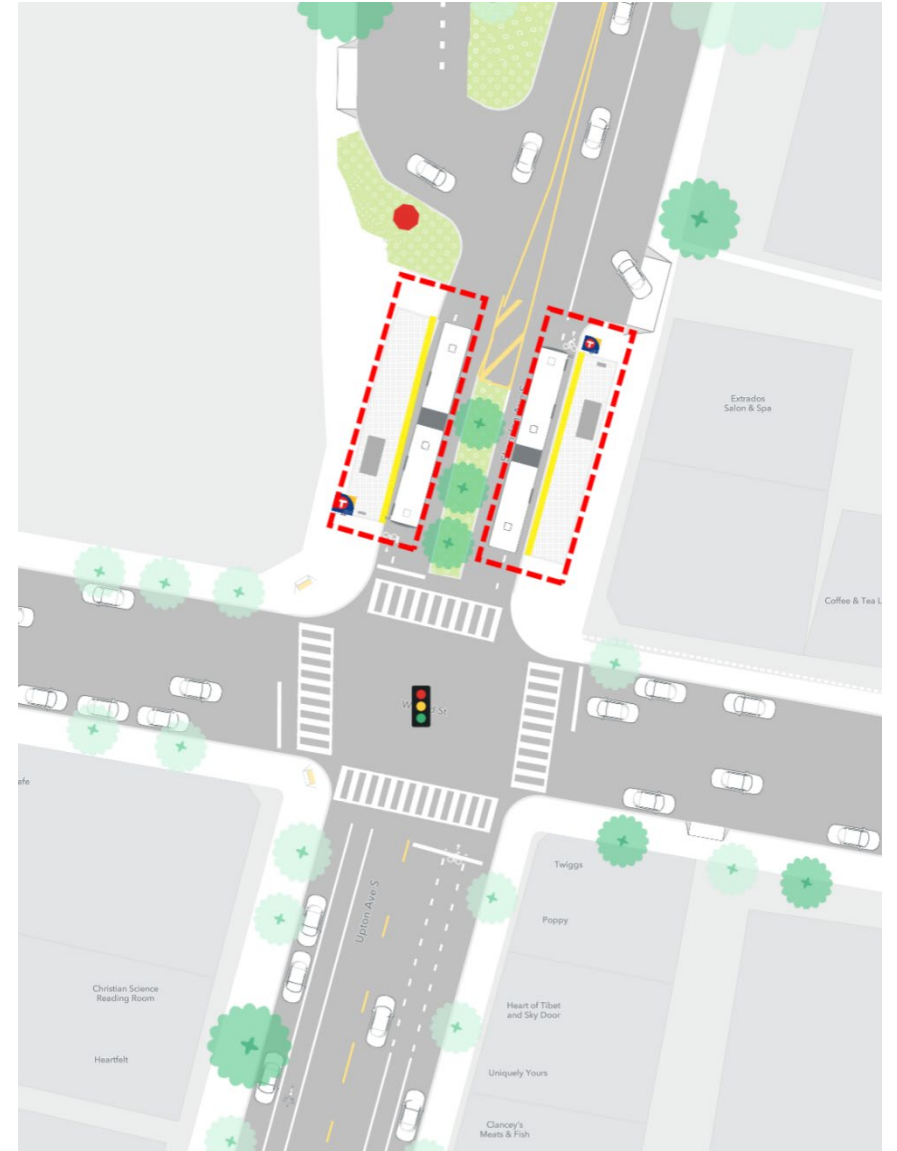
# Hennepin/1st Avenue & 2nd Street NE

- Received letters of opposition from condo residents and NIEBNA
- Key concerns:
  - Pedestrian and bicycle safety
  - Residents entering and exiting driveway
  - Traffic operations and loading
- Additional meetings with condo residents throughout corridor plan process
- Formal comment letter from City of Minneapolis identifies overall support for E Line, commitment to “working with community and Metro Transit to finalize a recommended station along 1st Avenue NE”
- Metro Transit and partner agency staff have reviewed and responded to concerns in detail



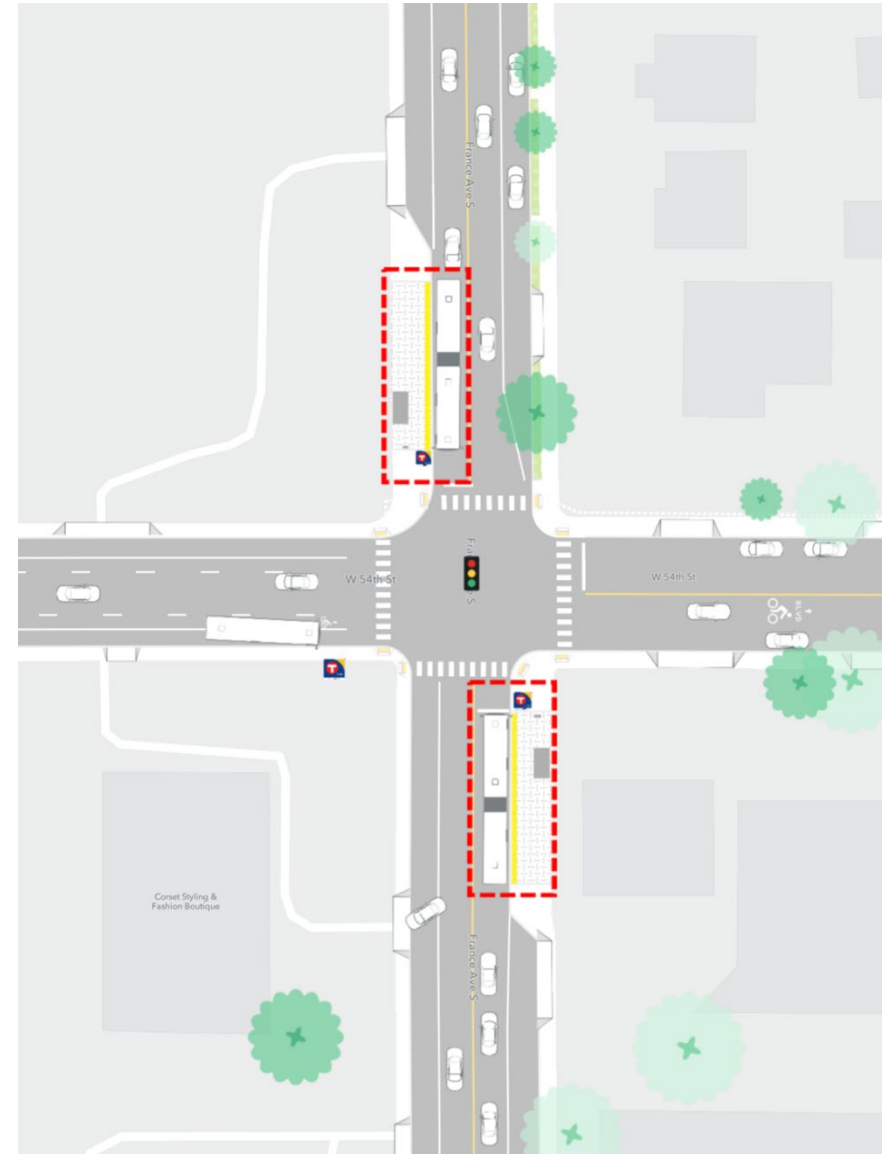
# Upton & 43rd Street

- Southbound platform changed to near side in recommended plan based on draft feedback
- Key concerns:
  - Neighborhood character
  - Traffic operations
  - Parking
- Significant feedback requesting return to southbound farside location
- Additional meetings with neighboring businesses throughout corridor plan process
- Proposed platform location balances concerns received with E Line and overall transit network goals



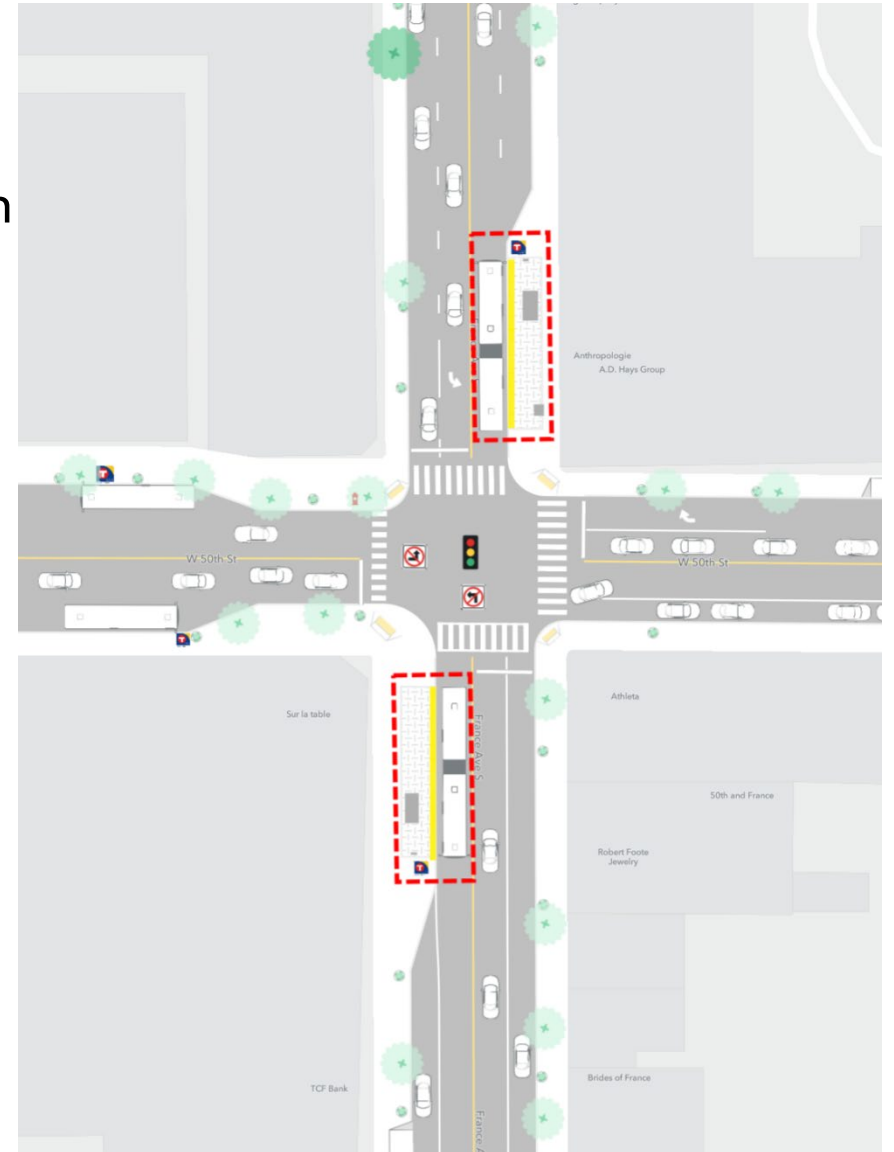
# France & 54th Street

- Key concerns:
  - Request to move platforms to farside of intersection
  - Traffic operations with right turns and buses
- Traffic analysis shows no significant impact due to E Line at this intersection
- Site constraints prevent farside platforms (typically preferred configuration)



# France & 50th Street

- Received letters opposing proposed station from 50th & France Business Association and residents of the France Ave Condo Association
- Key concerns:
  - Traffic operations
  - Visual impact of stations
- Additional meetings with business association throughout corridor plan process
- Formal letter from City of Edina requesting move to 51st Street, with support for all other platform locations
- Traffic analysis shows no significant impact due to E Line at this intersection



# Revisions from recommended to final plan

- Includes summary of feedback on recommended and draft corridor plans, and additional response to comments on individual station locations and key themes
- No changes to station or platform locations
  - Staff have reviewed feedback received from the public and our partner agencies in detail
  - Proposed platform and station locations balance concerns received with E Line and overall transit network goals, as well as positive feedback received throughout planning process
  - Staff will continue to engage with stakeholders throughout design to address and/or mitigate concerns raised

# Proposed action 2022-134

- That the Metropolitan Council approve the Final E Line Corridor Plan to establish the number and location of stations included in the project.

