



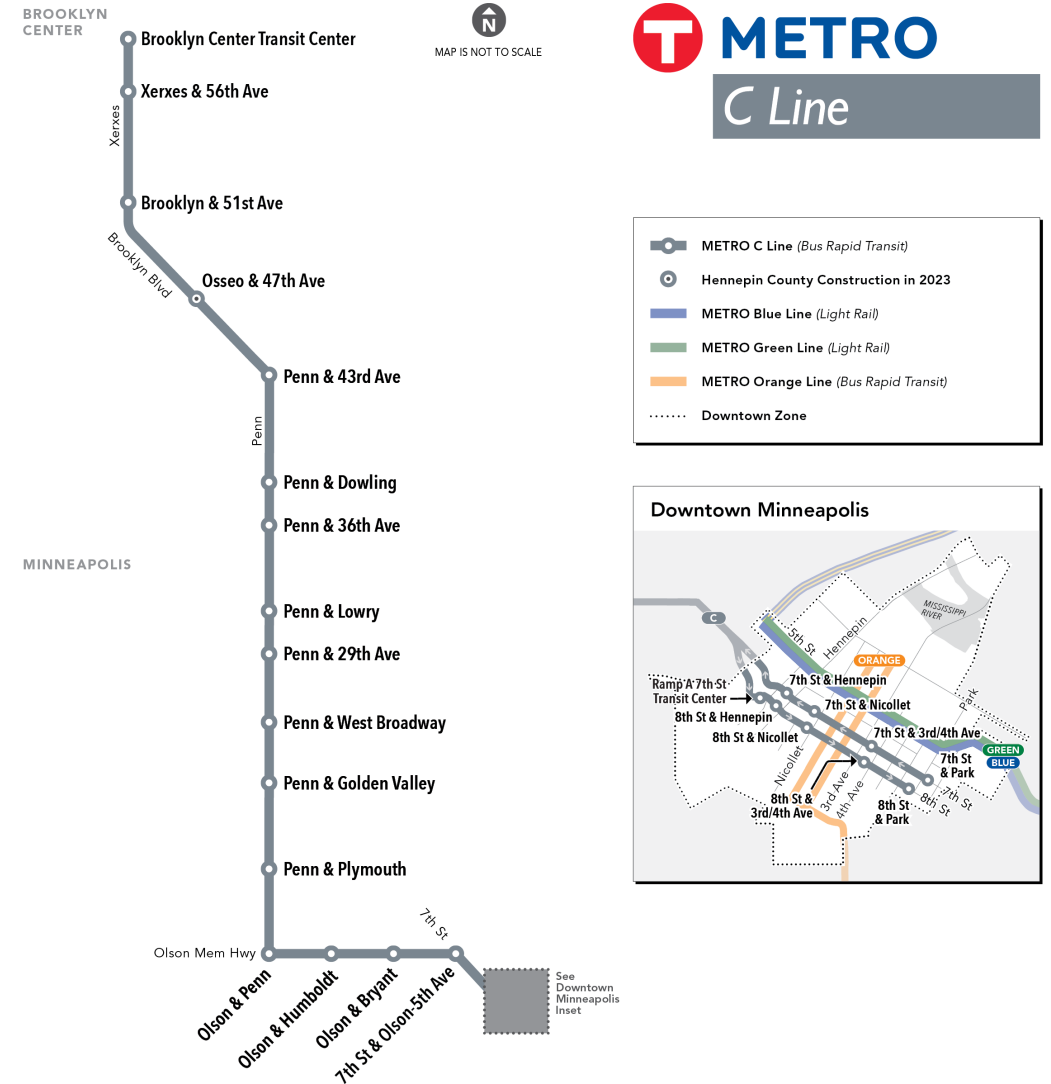
Business item 2022-275

METRO C Line – Olson Memorial Highway Long-Term Alignment

Laura Greteman, Planner | October 24, 2022

Proposed action 2022-275

- That the Metropolitan Council approve the staff recommendation to retain the long-term METRO C Line alignment on Olson Memorial Highway.



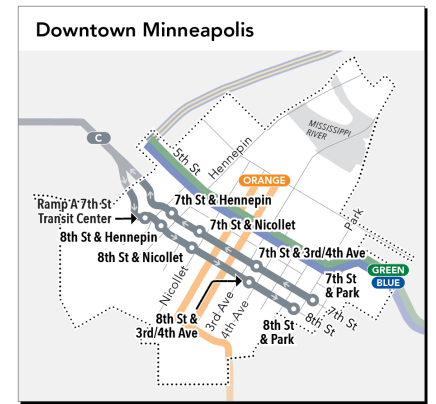
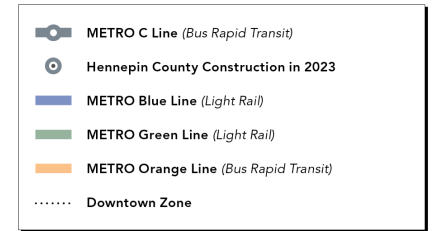
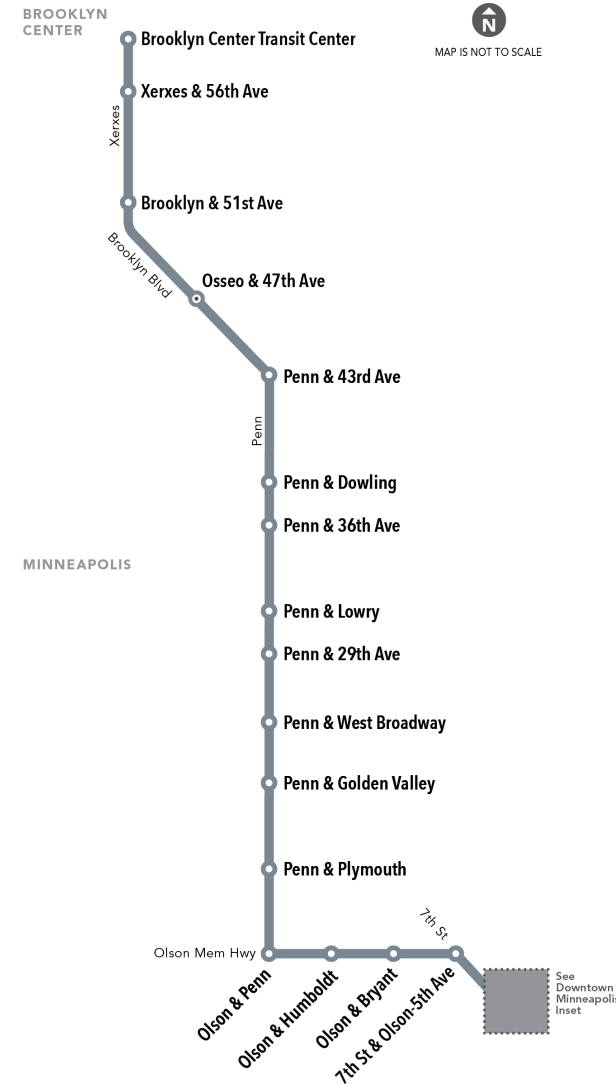
Planning history

- **April 2016:** Metropolitan Council approves C Line Station Plan with temporary stations on Olson Highway in anticipation of LRT construction
- **Summer 2016:** Study of long-term alignment alternatives on Olson Highway and Glenwood Avenue
- **November 2016:** Metropolitan Council approves plan to move C Line to Glenwood Avenue concurrent with METRO Blue Line Extension opening on Olson
- **June 2019:** C Line opens along Olson Memorial Highway with temporary stations at three locations
- **June 2022:** Metropolitan Council adopts the revised route for the Blue Line Extension, no longer serving Olson Memorial Highway



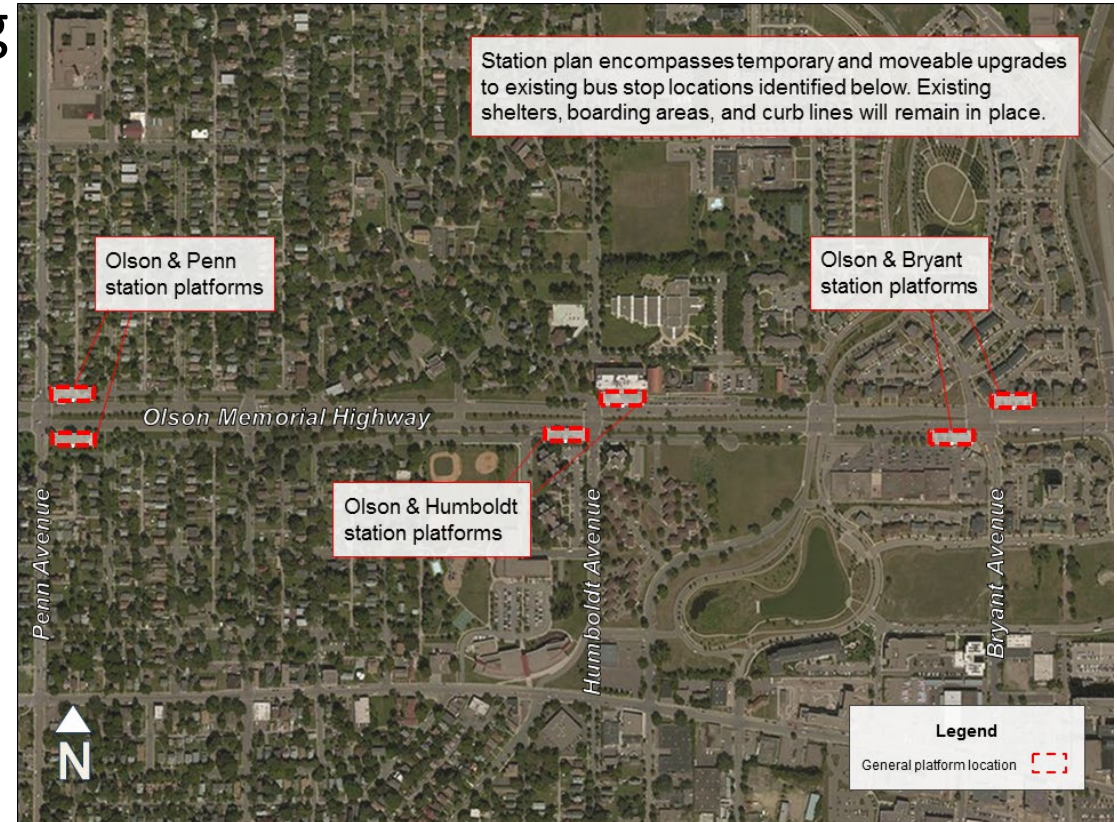
Long-term recommendation: C Line remains on Olson

- Future Blue Line Extension will no longer duplicate C Line along Olson Memorial Highway
- C Line will continue to serve established travel patterns in this area
- Existing riders boarding on and traveling through Olson will not have service relocated
- Opportunity for coordination with MnDOT roadway project on Olson Memorial Highway, including transit improvements



Permanent stations on Olson Memorial Highway

- Existing temporary C Line Stations along Olson Memorial Highway will be made permanent
- C Line permanent stations will be constructed in coordination with MnDOT's 2027 roadway project on Olson Memorial Highway
- While station locations will remain at the same intersections as today, the platforms may shift to the far-side of intersections
- Any revisions to stations would be considered by the Council in a separate future action to amend the C Line Station Plan



Temporary stations will be made permanent on Olson Memorial Highway

Temporary Station at Olson & Bryant

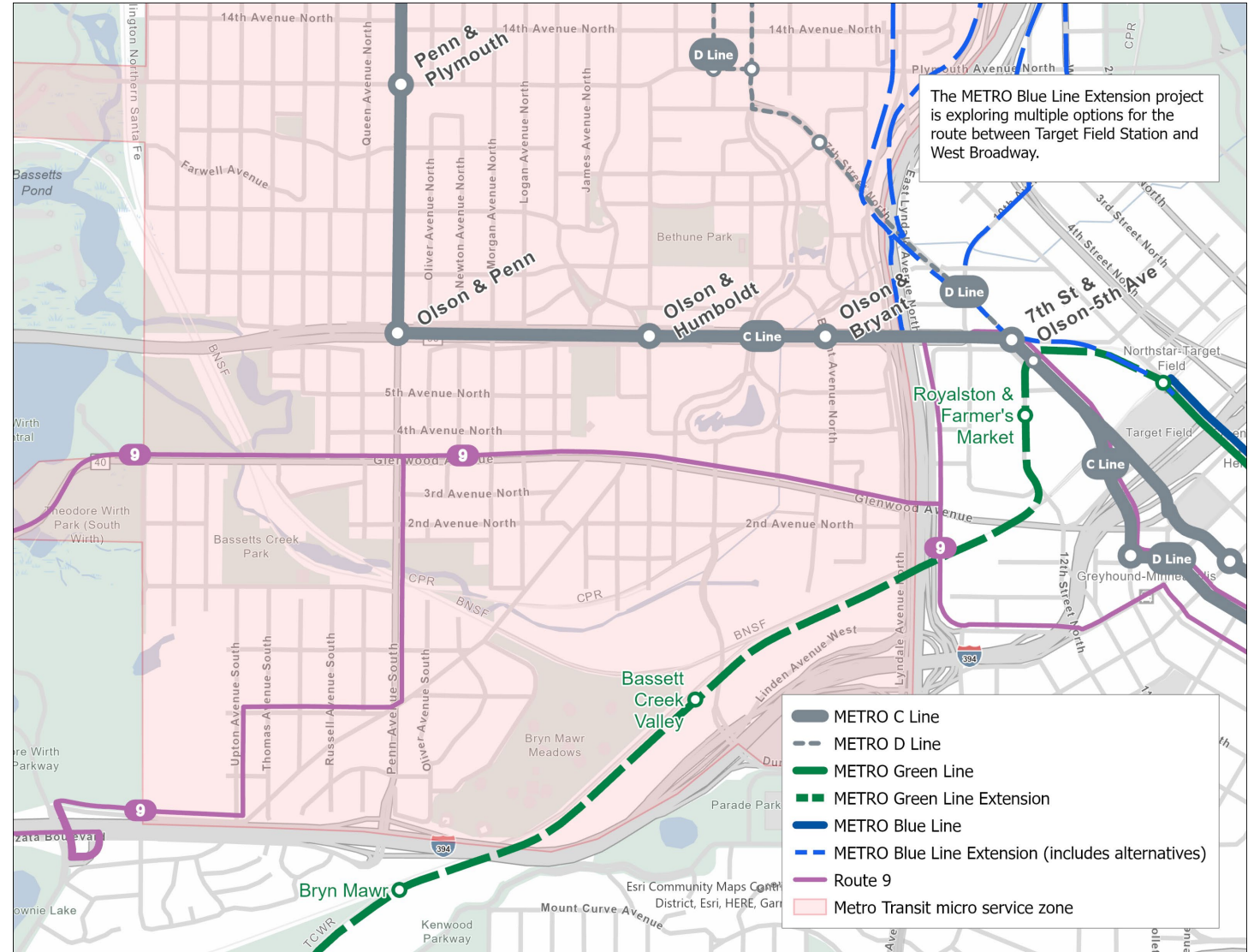


Permanent Station at Penn & 43rd Avenue



Existing and planned transit service in this area

- C Line will continue to serve Olson Memorial Highway
- Route 9 local service on Glenwood Avenue
- Metro Transit micro (12-month pilot)
- METRO Green Line Extension



Next steps

- Coordination with MnDOT and other project partners on upcoming Olson Memorial Highway study ahead of 2027 roadway project
- Planning and engagement process to determine permanent location of platforms at stations in coordination with MnDOT roadway project
- Any revisions to stations would be considered by the Council in a separate future action to amend the C Line Station Plan

Proposed action 2022-275

- That the Metropolitan Council approve the staff recommendation to retain the long-term METRO C Line alignment on Olson Memorial Highway.

