



# METRO G Line Draft Corridor Plan

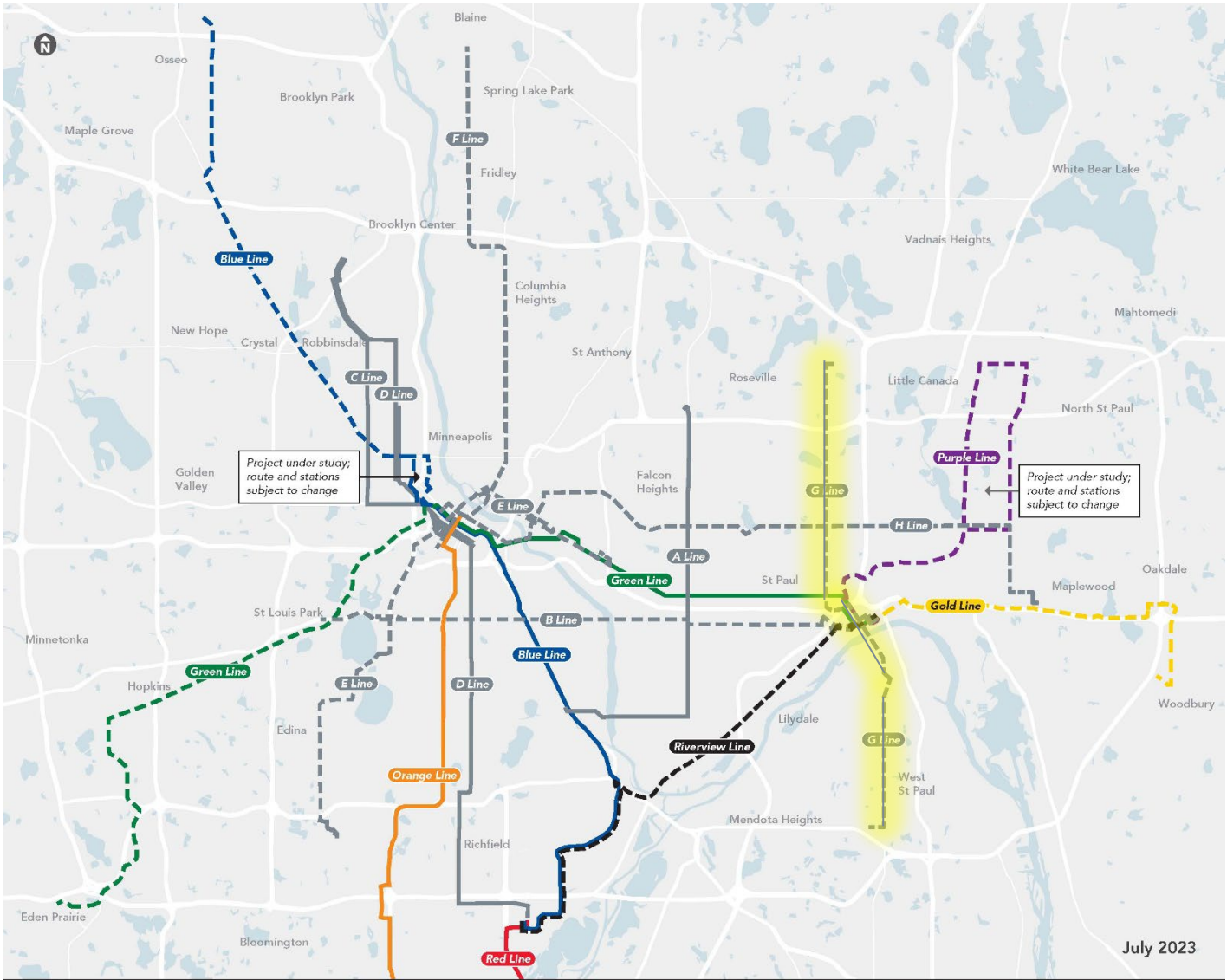
Transportation Committee | September 25, 2023

Laura Greteman, Planner, Arterial BRT



# Arterial BRT Network

- The METRO G Line will be the seventh line in the arterial BRT network
- Important link in the expanding METRO network
- Connecting with downtown Saint Paul and several other existing and planned METRO lines



July 2023

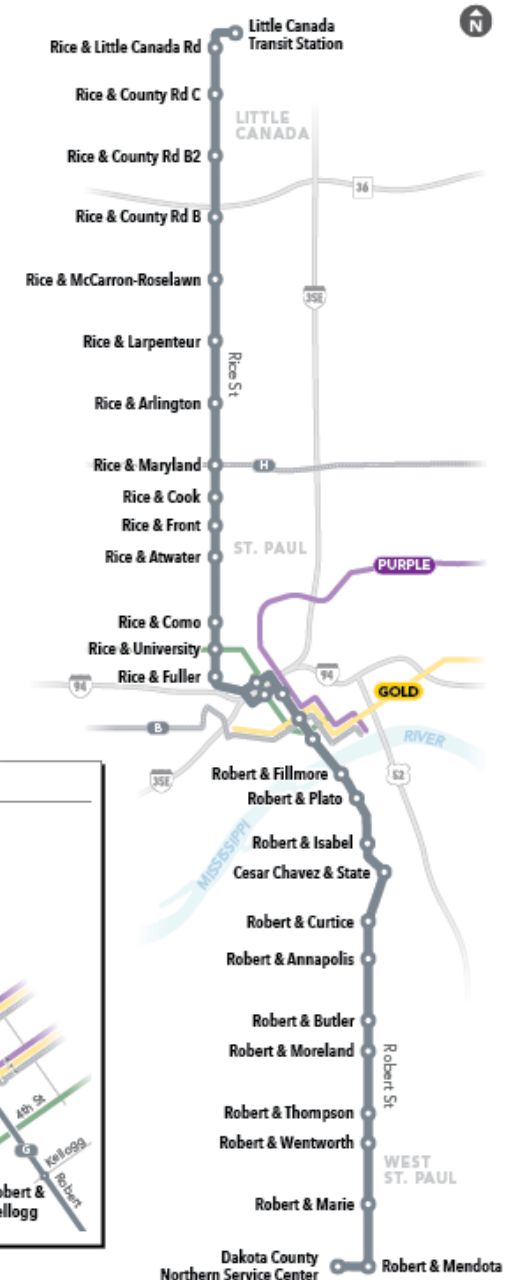
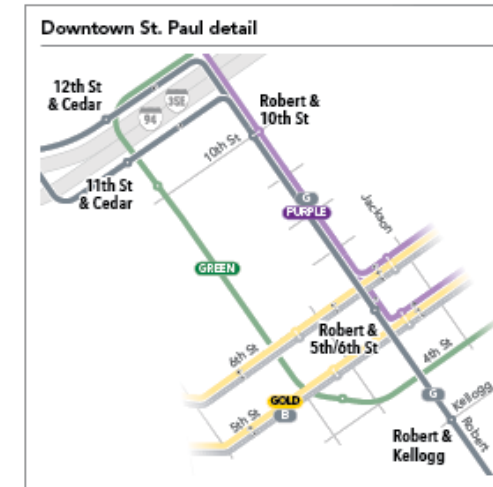
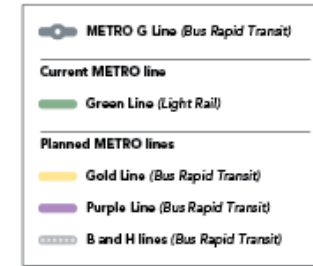


# METRO G Line bus rapid transit

- Fast, frequent, all-day service from Little Canada to West St. Paul
- 11.5-mile corridor from Little Canada Transit Station to Dakota County Northern Service Center
- Planned to mostly replace Route 62 and Route 68 in the G Line corridor

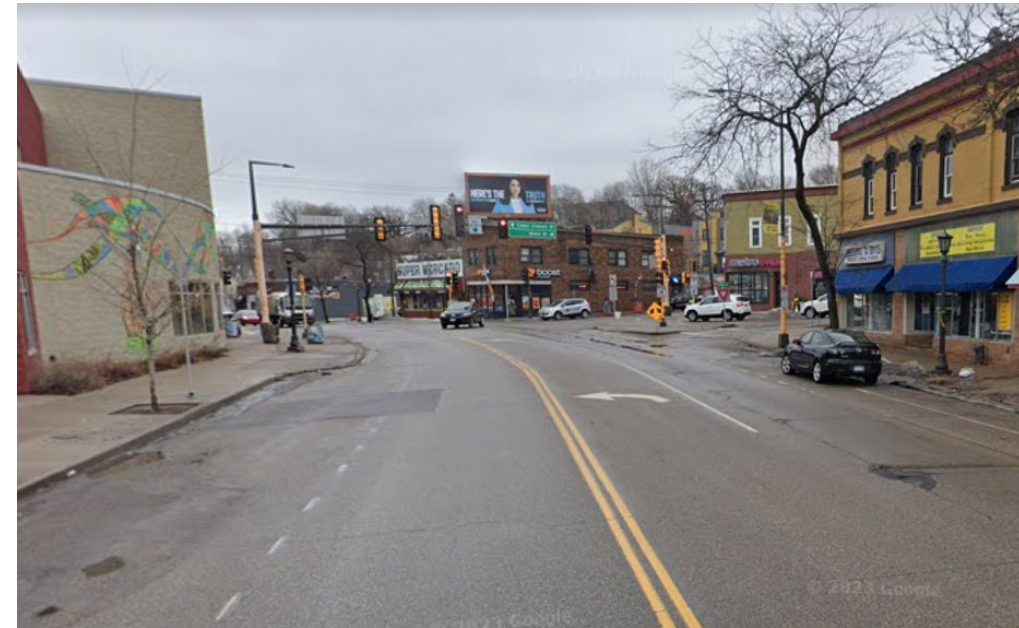


August 2023



# G Line corridor overview

- Will serve Minnesota State Capitol, downtown St. Paul, Dakota County Northern Service Center
- Existing ridership
  - Combined Route 62 and Route 68 average weekday ridership of 4,100 along the G Line corridor in March 2023
- Demographics
  - 56% of corridor residents identify as Black, Indigenous, People of Color (BIPOC)
  - 16% of corridor households do not have access to a car
  - 58% of the corridor has a median household income of less than \$60,000
- Route 62 fare-free pilot



# Planned project schedule

Planning phase

We are here

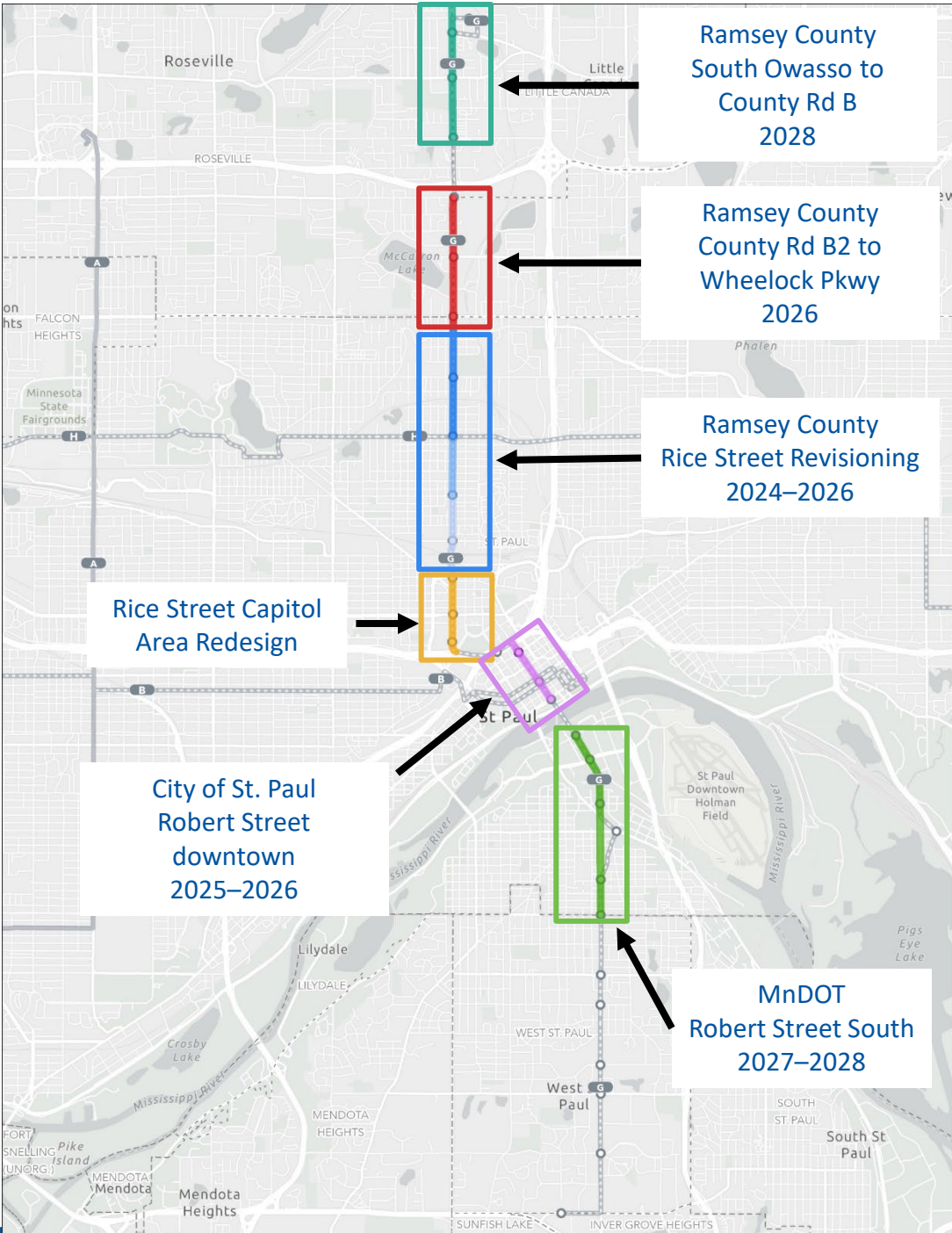


Looking for community input to select station locations

Community engagement

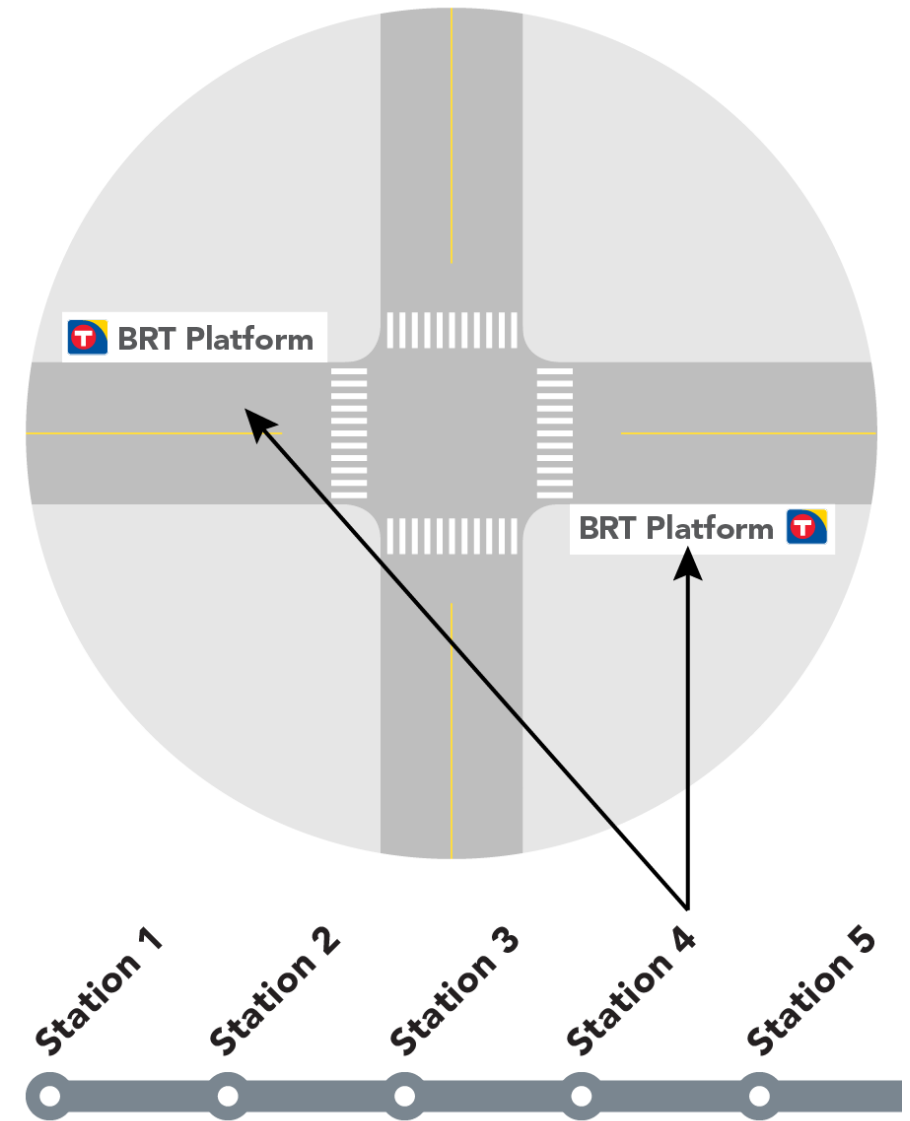
# G Line project coordination

- City of St. Paul
  - Robert Street downtown (2025-2026)
- Ramsey County
  - Rice Street Revisioning (2024-2026)
  - Rice Street County Rd B2 to Wheelock (2026)
  - Rice Street South Owasso to County Rd B (2028)
- Rice Street Capitol Area Redesign (TBD)
- MnDOT
  - Robert Street Fillmore to Annapolis (2027-2028)



# What is included in the Draft Corridor Plan?

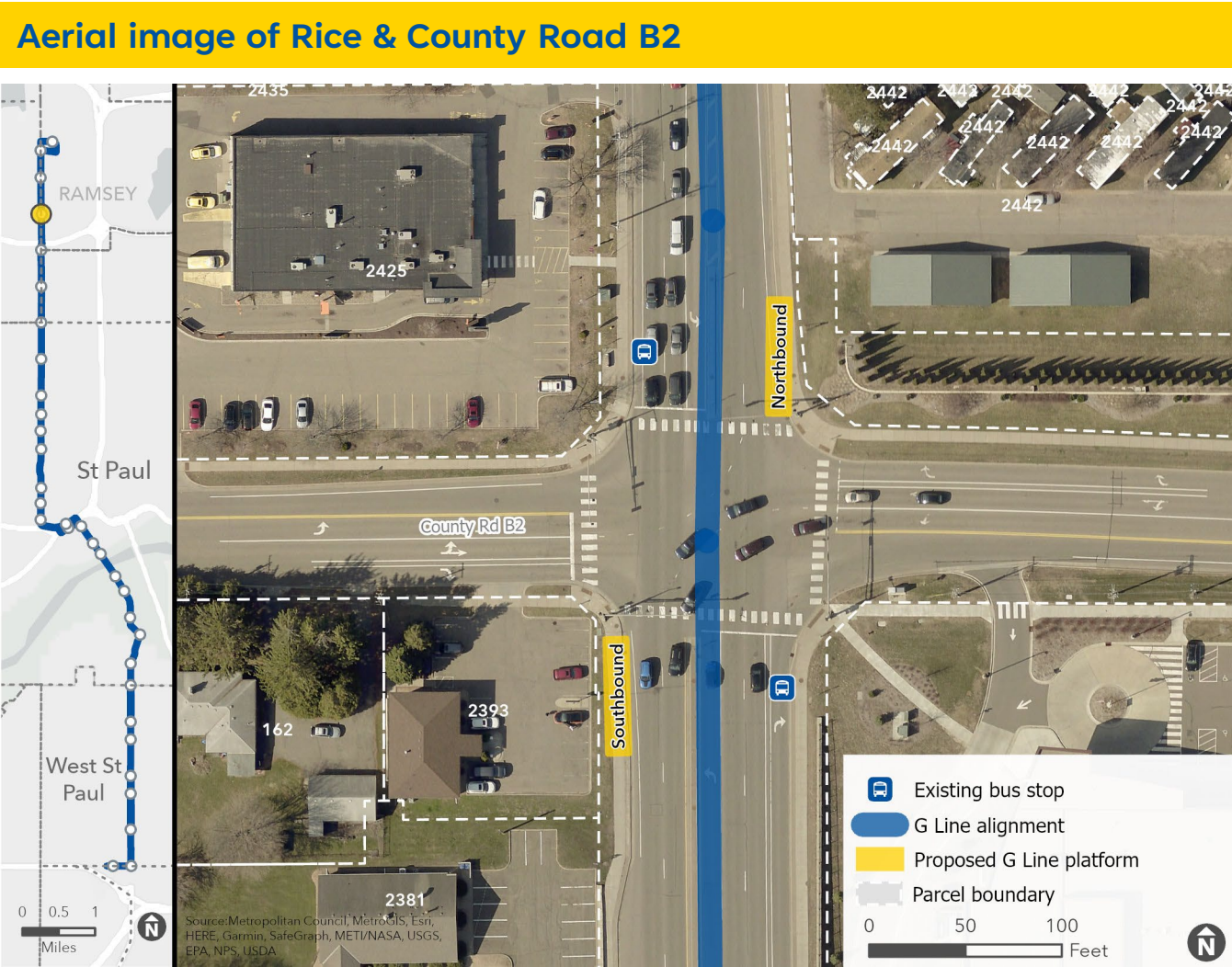
- Proposed **station** locations
- Proposed **platform** locations within the station intersection
- Information about how proposed locations were determined
- Description of other planning considerations
  - Project coordination with agency partners
  - Bus priority treatments
  - Supporting local bus service
- Station and platform designs will be finalized during engineering phase





# Proposed station locations

- Aerial image
- List of key destinations at the intersection
- Coordinated projects at the intersection
- Pedestrian, bicycle, and transit access
- Any impacts to on-street parking
- Other station and platform locations considered
- Some stations may include proposed station plans if not within a coordinated project



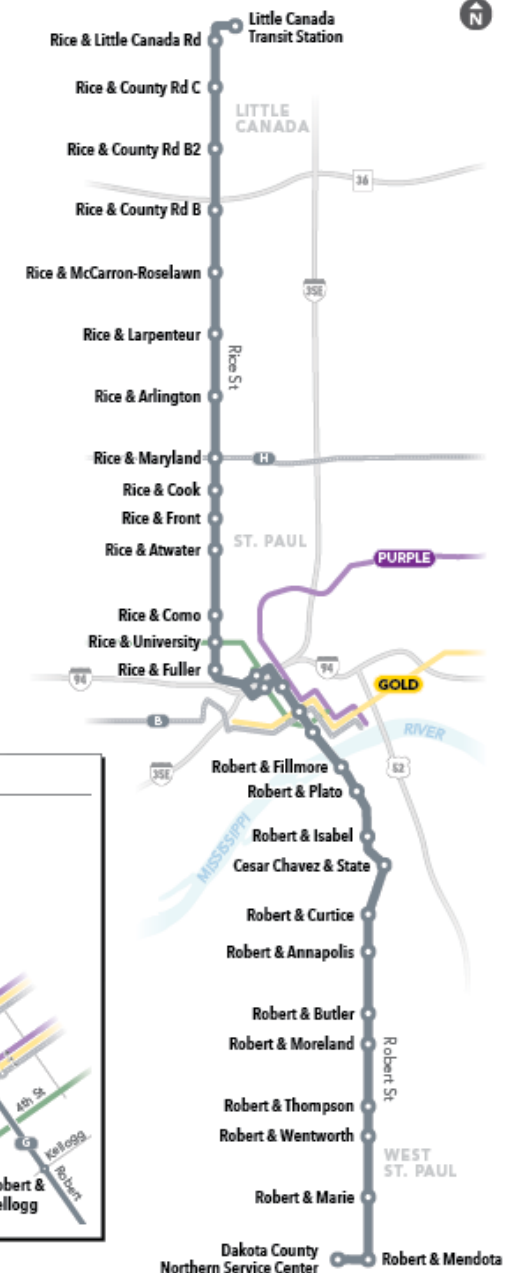
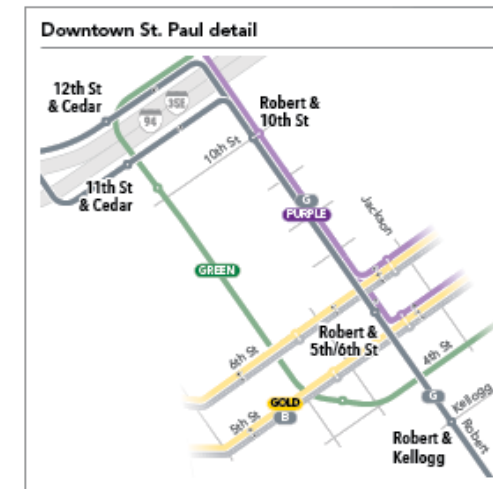
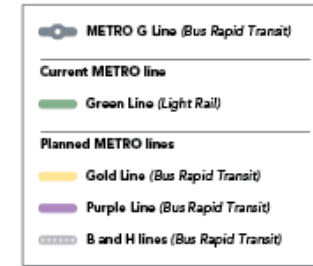


# Key themes

- Draft corridor plan includes 32 proposed stations
  - Compared to about 67 local bus stops within the corridor today
  - Stations are spaced about 0.4 miles apart on average
  - About 70% of current riders board at a stop at or within one block of a proposed G Line station
- Very limited on-street parking impacts in this corridor due to the G Line
- Local service plan is in development and will be finalized closer to opening day

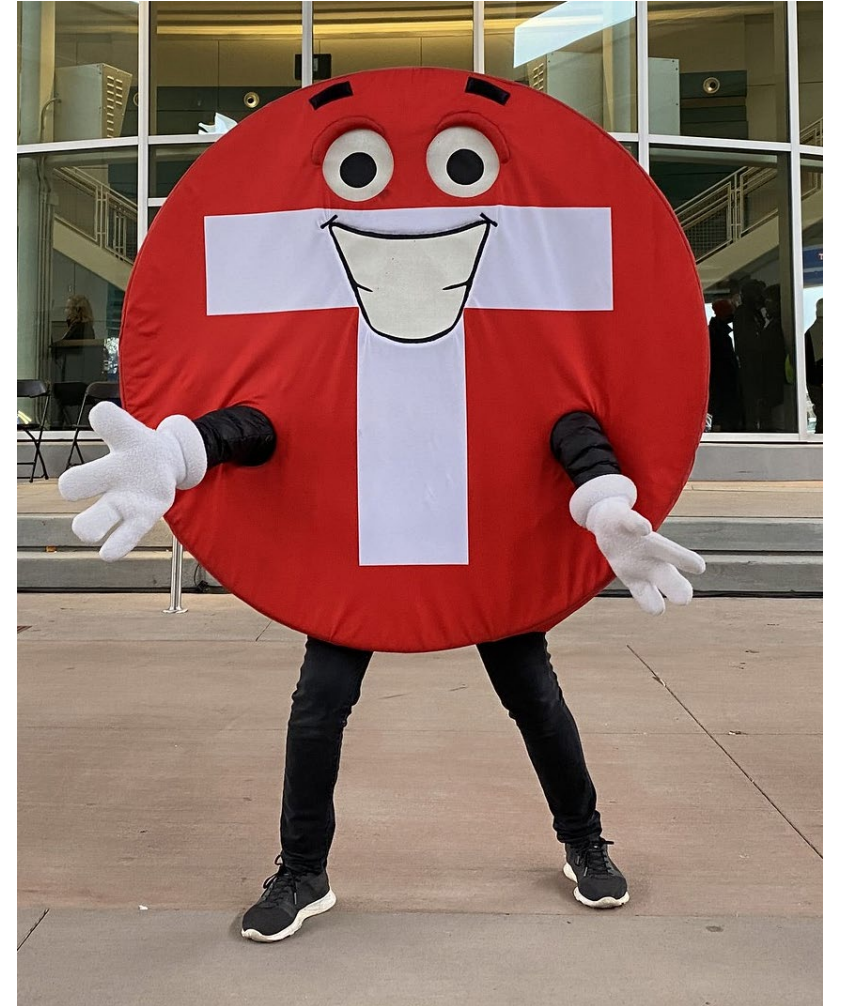


August 2023



# Draft Corridor Plan public engagement

- 6-week public engagement period
- Early, important opportunity for community input
- Engagement Schedule
  - Summer/fall 2023: Raised awareness about the project along the corridor
  - **Public comment period: September 25 – November 6**



# Public engagement strategies

- Direct mailing to all homes, businesses, and property owners along the corridor
- Door knocking with translated flyers
- Virtual open house (October 10, 6:30 p.m.)
- Distribute messages through local elected officials, cities, and partner agencies
- Partner with neighborhood, community, business, and advocacy groups
- Route 62 and Route 68 bus rider outreach
- Email newsletters, project webpage, social media
- Translation of documents in Spanish, Somali, Hmong, Oromo, Vietnamese, and Karen





# Thank You!

**Laura Greteman**

*[laura.greteman@metrotransit.org](mailto:laura.greteman@metrotransit.org)*

612-349-7672