

Midtown Greenway Bicycle and Pedestrian Trail Expansion Planning

Business Item: 2024-260

Transportation Committee
September 23, 2024



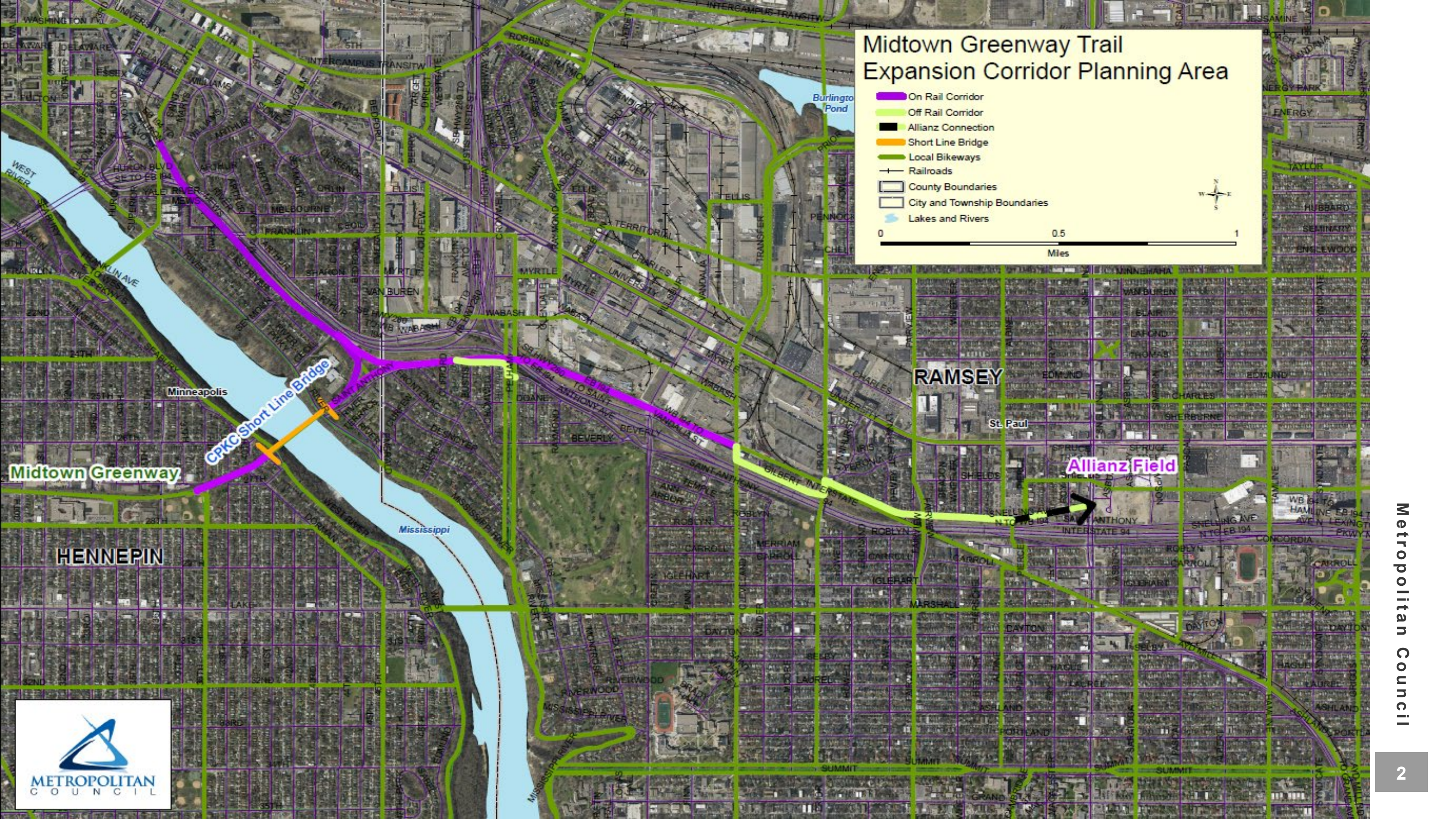
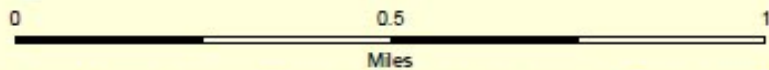
Background

2023 Omnibus Transportation Finance Bill

- Directed Met Council to:
 - Plan a continuous and dedicated bicycle/pedestrian trail from the current eastern terminus of the Midtown Greenway, across the Mississippi River on the Short Line Rail Bridge and terminating at Allianz Field.
 - Include a trail connection to the edge of the University of Minnesota main campus terminating at 27th Ave SE.
- The purpose of this planning project is to develop a conceptual plan for extending the Greenway that provides for a new transportation connection and recreational opportunity and to advance the concept into project development.

Midtown Greenway Trail Expansion Corridor Planning Area

- On Rail Corridor
- Off Rail Corridor
- Allianz Connection
- Short Line Bridge
- Local Bikeways
- Railroads
- County Boundaries
- City and Township Boundaries
- Lakes and Rivers



Project Work Scope

The Midtown Greenway Trail Expansion Planning project work scope will be carried out in three phases:

Phase I: Pre-planning

The pre-planning phase will include

- Review of local and regional plans
- Existing conditions review
- Development of base mapping database

Phase II: Conceptual Planning & Design

The conceptual planning and design phase will include 3 parallel and coordinated efforts:

1. Conceptual layout plan for the preferred trail alignment as per state legislation
2. Phasing analysis of trail segments/sub-segments to determine appropriate segment phasing and interim alignments
3. Analysis of three design concepts for the Short Line rail bridge across the Mississippi River

Project Work Scope (2)

Phase III: Summarization and Conclusion

The summarization and conclusion phase will deliver

- Project Implementation Plan that lays out
 - Detailed steps to complete design and project approvals and permits
 - Land purchase or easement requirements
 - Identified government agency roles for leading project environmental review, permitting, and construction and for owning, operating, and/or maintaining the trail
 - Phasing plan and timeline for implementing segments on or off the rail corridor
- Comprehensive Final Report that documents and summarizes the overall conceptual planning process, including outreach and engagement activities

Project Work Scope (3)

Engagement and Outreach

At specific decision points during the project, the following agency and citizen groups will be consulted:

- Technical Work Group participating agencies:
 - City of Minneapolis
 - Minneapolis Park and Recreation Board
 - Hennepin County/Regional Rail Authority
 - Ramsey County/Regional Rail Authority
 - City of Saint Paul
 - MnDOT Metro District
- Regulatory and permitting agencies
- City districts/wards and neighborhoods
- Community stakeholders and advocacy groups

Business Item

Proposed Action

That the Metropolitan Council authorize the Regional Administrator to negotiate and execute contract 24P136 with Kimley Horn and Associates to provide transportation planning and engineering services for the Midtown Greenway Bicycle and Pedestrian Trail Expansion Planning project in an amount not to exceed \$534,350.



Steve Elmer, AICP

Planning Analyst, MTS

steven.elmer@metc.state.mn.us

