



Transit Asset Management Update

Kristin Thompson | Director, Asset Management

July 28, 2025



Agenda

- Transit asset management overview
- Team overview
- Current initiatives
- Major efforts ahead

What is Asset Management?

Transit asset management (TAM) is the:

- strategic and systematic practice of
- procuring, operating, inspecting, maintaining, rehabilitating, and replacing transit capital assets to
- manage their performance, risks, and costs over their life cycles,
- for the purpose of providing safe, cost-effective, and reliable public transportation.

(49 CFR Section 625.5)

Federal Transit Administration

Transit Asset Management requirements

- TAM Plan - every 4 years
 - Inventory of Capital Assets
 - Condition Assessment
 - Decision Support Tools
 - Investment Prioritization
 - TAM and SGR Policy
 - Implementation Strategy
 - List of Key Annual Activities
 - Identification of Resources
 - Evaluation Plan
- Annual National Transit Database reporting
 - Inventory of Assets
 - Condition Assessments and Performance Results
 - Projected Targets for the Next Fiscal Year
 - Narrative Report on System Conditions and Progress

Metro Transit Asset Management context

- Asset base is aging
- Ambitious program of system expansion
- Many workgroups managing assets
- Outdated technology tools to manage assets

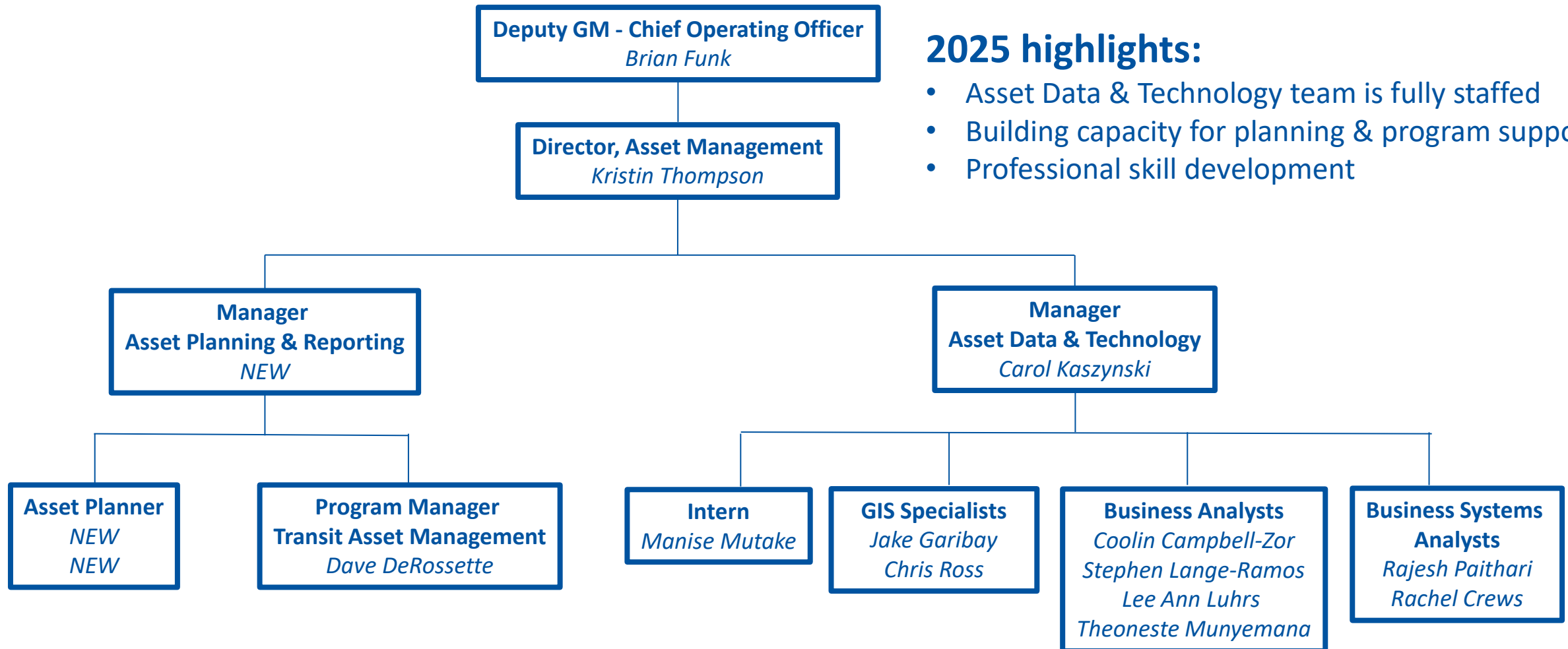
	Current	Future
BRT platforms	~240	~900
LRT stations	37	66
Miles of LRT track & infrastructure	21	49
Light rail vehicles	118	153
Buses	~700	800+
Non-revenue vehicles	440	~850

Metro Transit Asset Management future

New and aging assets add to Metro Transit's maintenance responsibilities and future financial commitments



Team Overview



EAMS = Enterprise Asset Management Solution

The Met Council will replace legacy systems with one EAMS to:

Manage Asset-Related Work

- Provide a unified asset work management system
- Help update and uniform processes across Met Council
- Empower smooth knowledge transfer

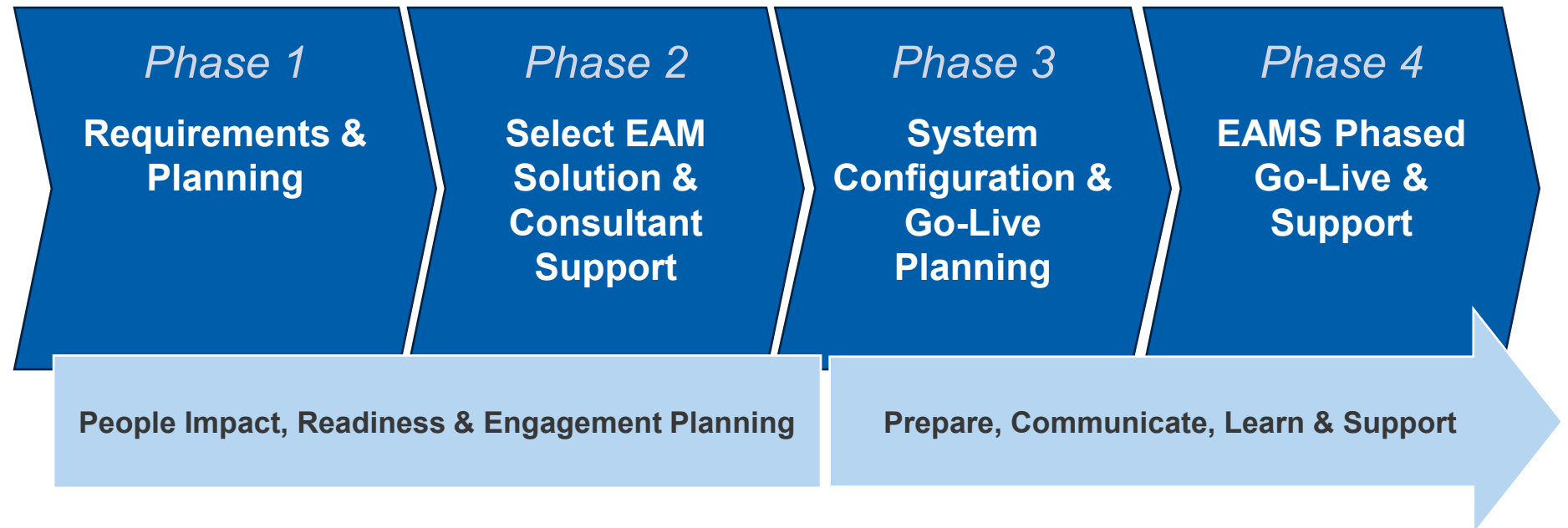
Make Asset Decisions & Plans

- Provide clear data on assets and related work
- Facilitate compliance reporting
- Inform decisions to repair or replace assets

EAM Project Process

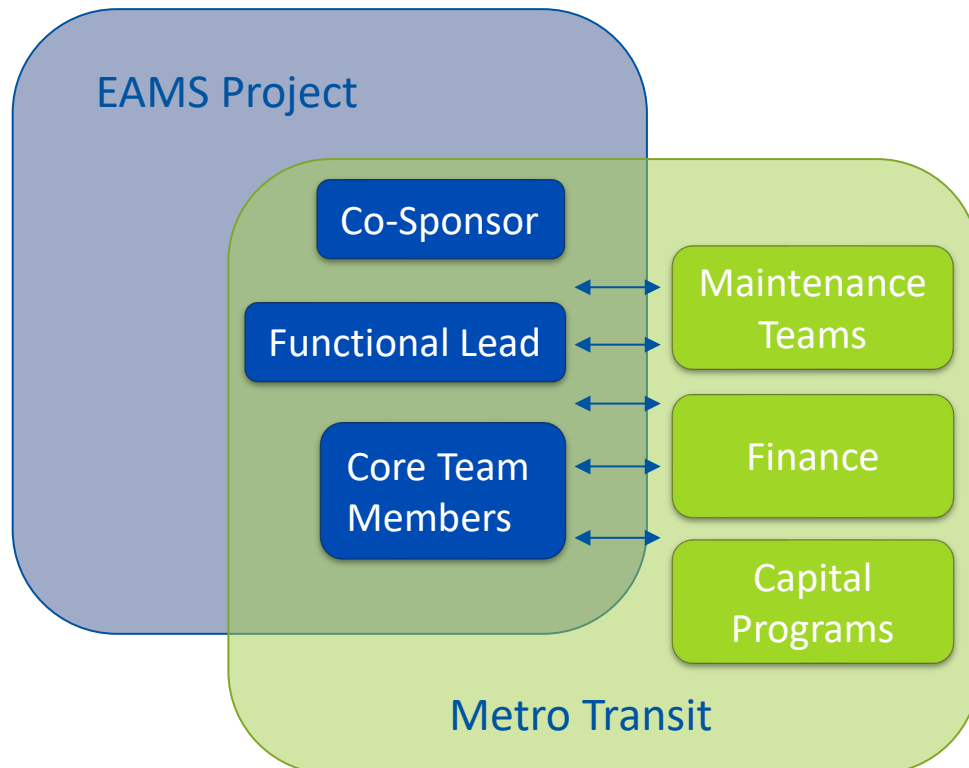
A Four-Phased Project Approach

We are Here ★



Asset Management role in EAMS

- Council-wide EAMS project will be transformational for Metro Transit

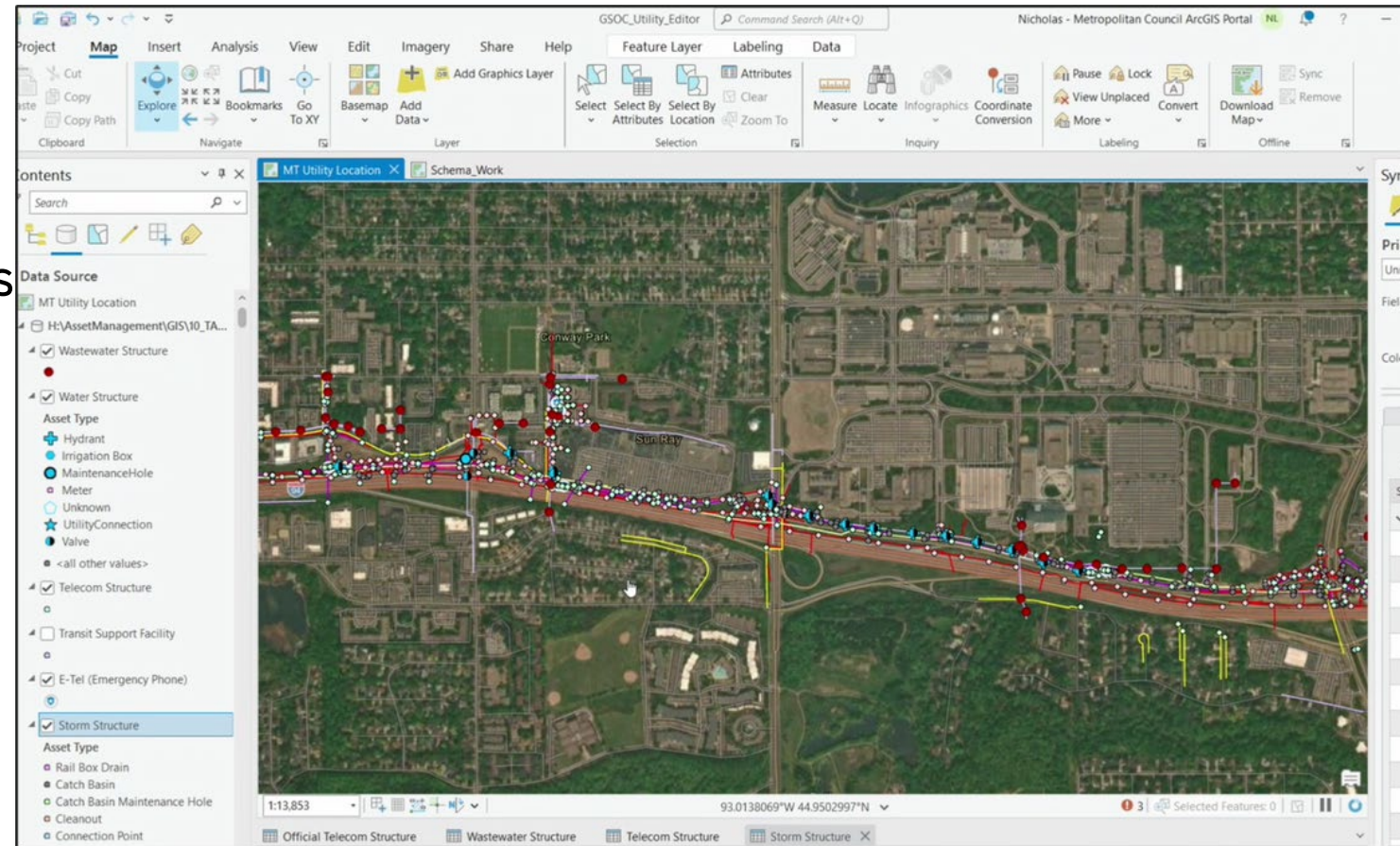


- Data transition
 - Inventory & analyze existing data
 - Identify & address data gaps
- Functionality
 - Capture existing processes and pain points
 - Partner to transition processes onto new system
- Support Metro Transit work groups shifting to the new system

Geographic Information Systems (GIS)

Asset Data Initiative

- GISMT database has been published for internal users
- Ongoing work to build datasets for new transitways
 - E.g. Gold Line, Green Line extension
- Utility location processes have been revitalized
- Readiness for EAMS



Capital Planning Support

- Roadmap of improvements to 30-year capital needs projections
 - Formalize Useful Life Benchmark for transit assets
 - Project planning for rail systems inventory and condition assessment



FTA Compliance Activities



- Developing documentation for annual National Transit Database reporting processes
- Preparing for TAM Plan update
 - Review of peer agency plans

Asset Management Plan (AMP) initiative

- An AMP is a tactical plan for managing an organization's assets to deliver an agreed standard of service
 - What assets do we have?
 - What do we require of them?
 - What strategies are we using to achieve those requirements?
 - What resources are needed to implement the strategies?

Organizational plans & objectives

Transit Asset Management Plan (TAMP)

Asset Management Plans (AMPs)

Implementation of life-cycle activities

Asset Management Plan Approach

- Develop AMP structure and build awareness
- Identify initial AMPs to tackle as a pilot
 - Signage
 - Rail signals & communications
- Use experience to refine *process* & *product*
- Complete remaining 1st generation AMPs in 2026
- Establish regular update cycle



Major efforts ahead

	2025	2026	2027	2028
Staffing & Onboarding				
Technology Initiatives				
EAMS Implementation				
GIS Asset Data Enhancements				
Asset Planning				
AMP strategy and development				
Update AMPs				
30-year capital needs projections				
FTA Compliance				
TAM Plan Update				
Annual NTD Reporting				

Thank You!

Kristin Thompson

kristin.thompson@metrotransit.org