



# 2024 Year End Ridership

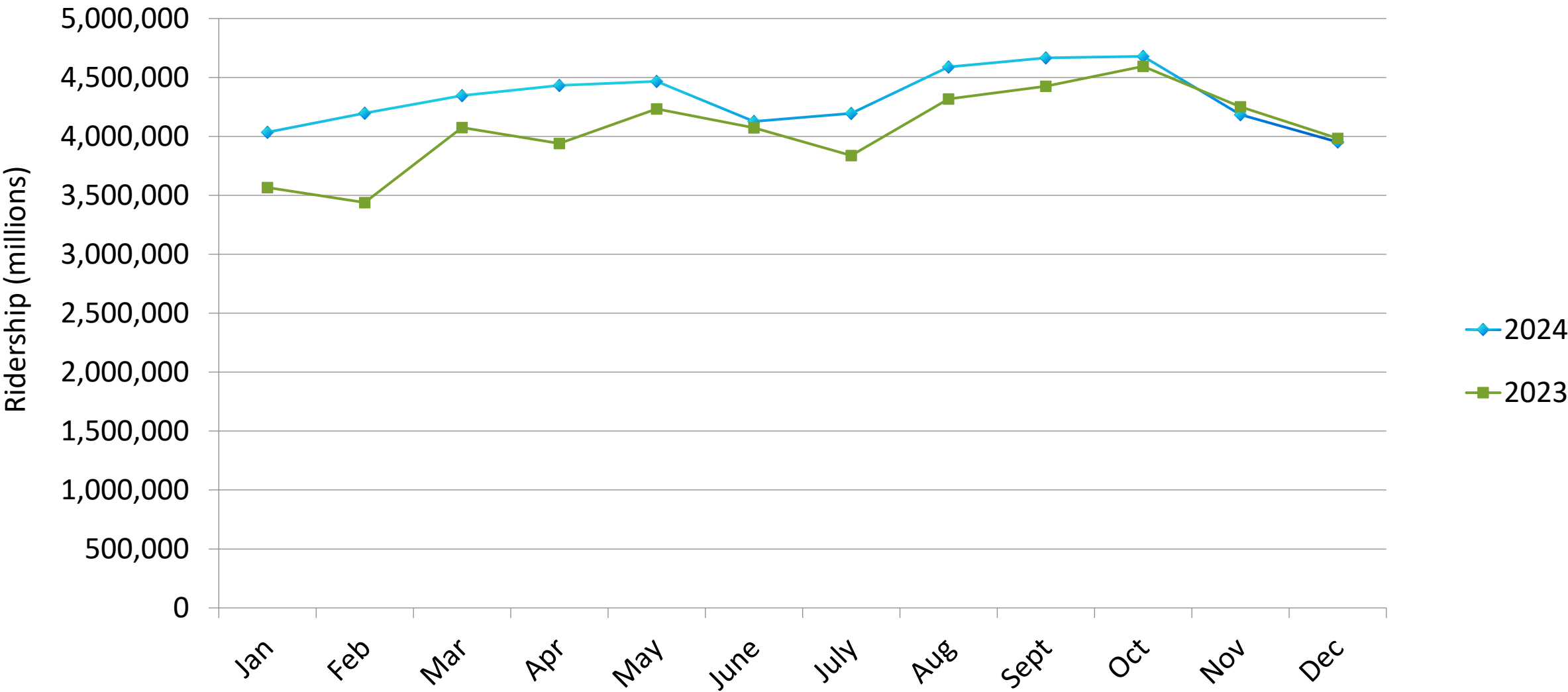
Transportation Committee



February 2025

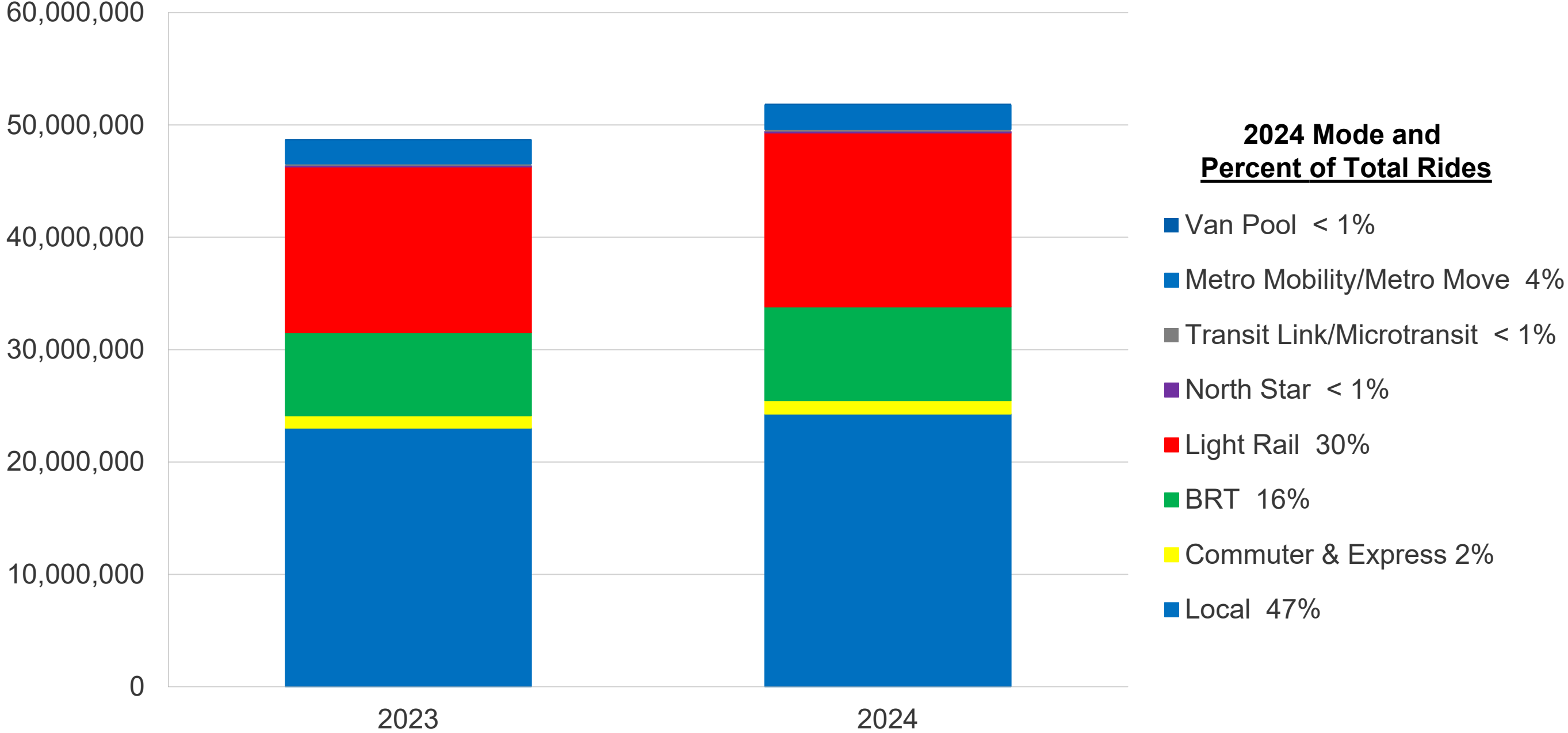
# Council Ridership – Year End 2024

2023 Total: 48,736,824    2024 Total: 51,874,415 (6%)



# Council Ridership by Mode – Year End 2024

2023 Total: 48,736,824    2024 Total: 51,874,415    (6%)



# Council Ridership by Mode – Year End 2024

2023 Total: 48,736,824

2024 Total: 51,874,415 (6%)

Mode	2023	2024	Nominal Change	% Change
Bus	31,513,367	33,805,577	2,292,210	7%
Light Rail	14,755,893	15,489,194	733,301	5%
Northstar	97,265	127,368	30,103	31%
Demand Response	2,288,210	2,370,099	69,983	3%
Vanpool	82,089	82,177	68	0%
<b>Council Total</b>	<b>48,736,824</b>	<b>51,874,415</b>	<b>3,137,591</b>	<b>6%</b>

# Bus Ridership – Year End 2024

2023 Total: 31,513,367

2024 Total: 33,805,577 (6%)

Bus Mode	2023	2024	Nominal Change	% Change
Local	23,033,814	24,277,862	1,244,048	5%
Bus Rapid Transit	7,388,780	8,335,309	946,529	13%
Express	1,090,773	1,192,406	101,633	9%
<b>Council Total</b>	<b>31,513,367</b>	<b>33,805,577</b>	<b>2,292,210</b>	<b>7%</b>

# Demand Response Ridership – Year End 2024

2023 Total: 2,288,210

2024 Total: 2,370,099 (4%)

Program	2023	2024	Nominal Change	% Change
Transit Link	122,782	131,112	8,330	7%
Micro Transit	63,711	67,287	3,576	6%
Metro Mobility (Special Transp)	2,101,717	2,070,985	-30,732	-1%
Metro Move (Special Transp)	0	100,715	100,715	N/A
<b>Council Total</b>	<b>2,288,210</b>	<b>2,370,099</b>	<b>81,889</b>	<b>4%</b>

# System Ridership – Year End 2024

2023 Total: 53,278,599

2024 Total: 56,771,490 (7%)

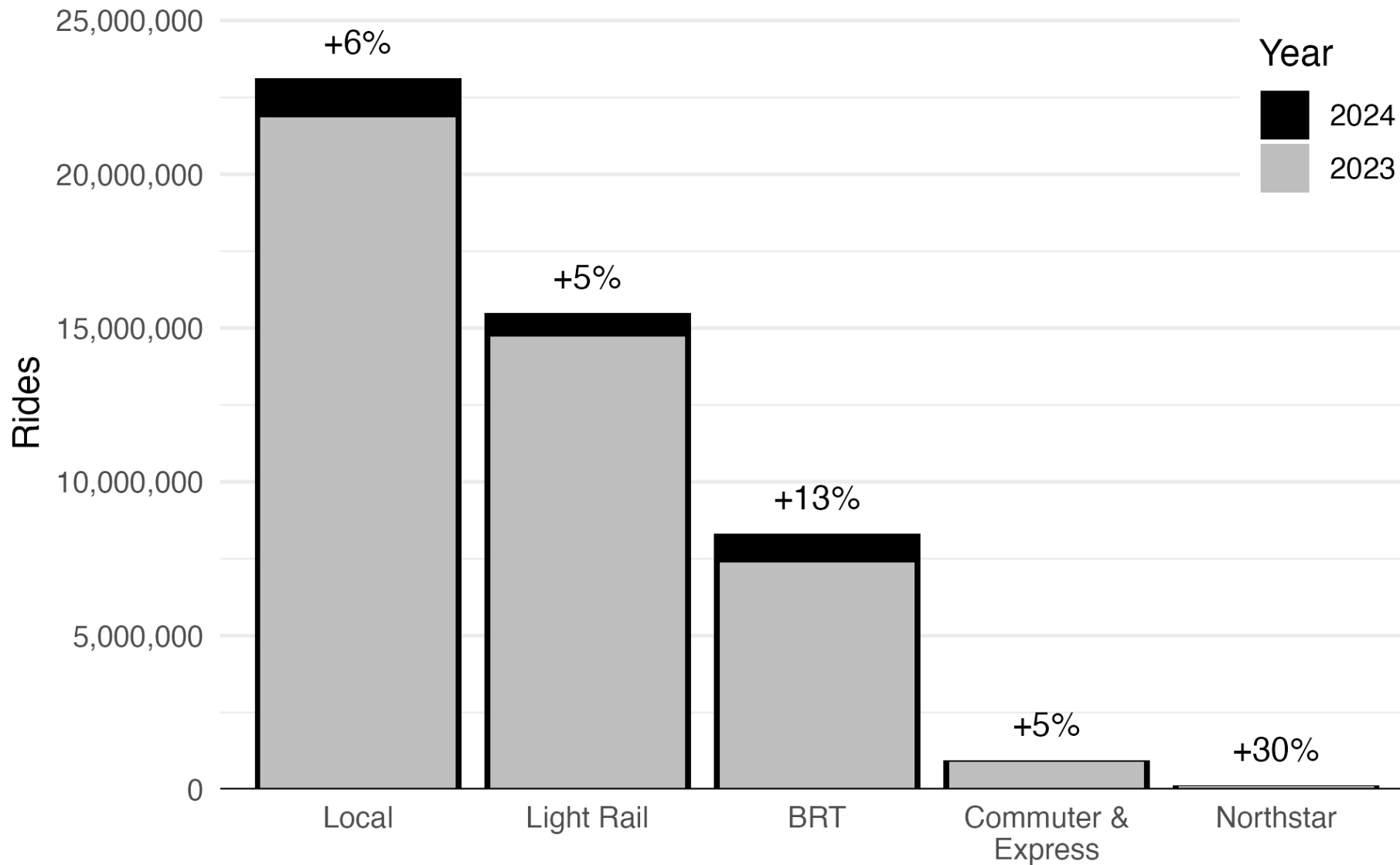
Mode	2023	2024	Nominal Change	% Change
Metropolitan Council	48,736,824	51,874,415	3,137,591	6%
Maple Grove	216,123	240,608	24,485	11%
MVTA	1,255,515	1,223,343	-32,172	-3%
Plymouth	180,874	218,436	37,562	21%
Southwest Transit	446,391	550,938	104,547	23%
U of MN	2,442,872	2,663,750	220,878	9%
<b>Regional Total</b>	<b>53,278,599</b>	<b>56,771,490</b>	<b>3,492,891</b>	<b>7%</b>

# Understanding Ridership Trends

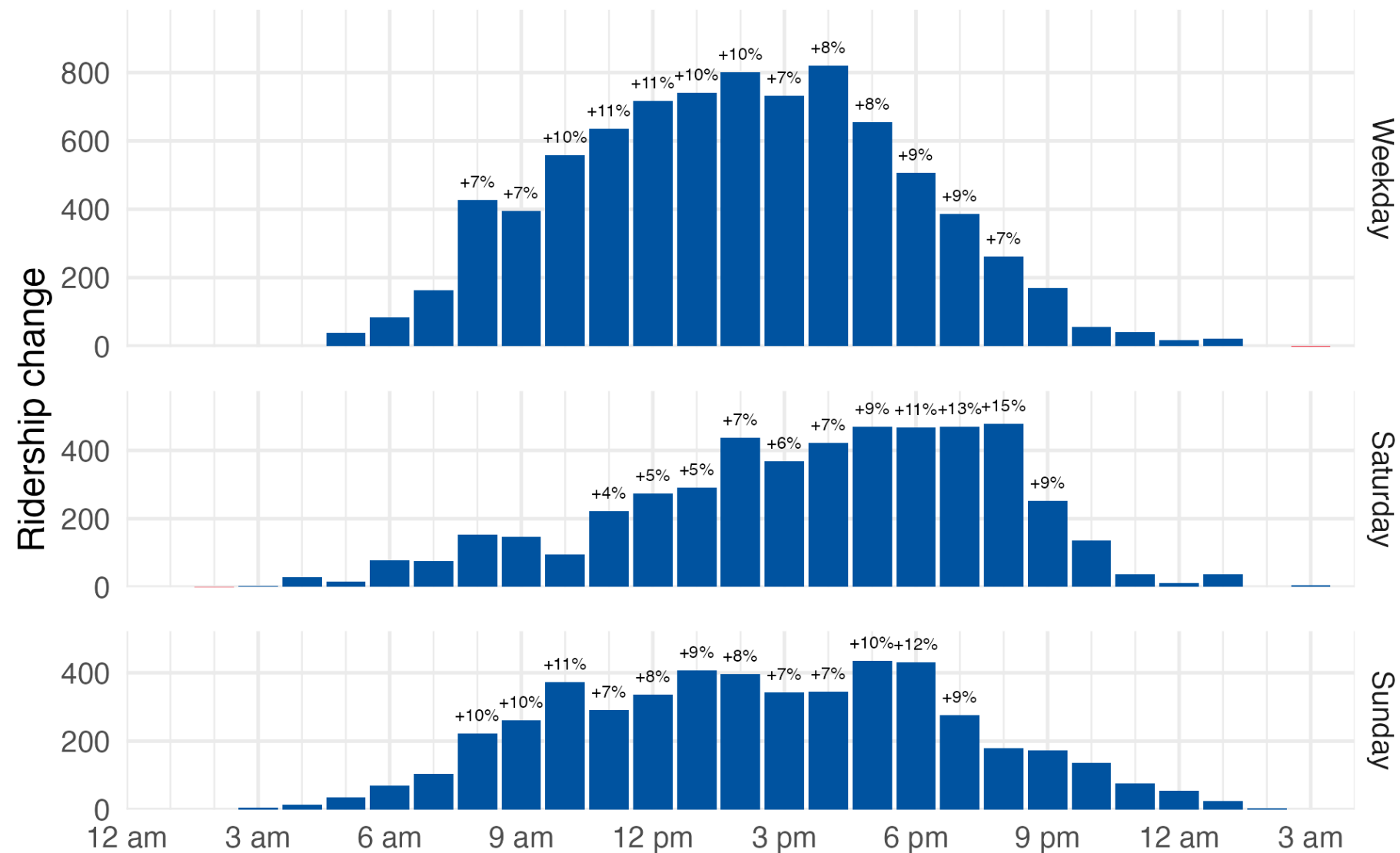




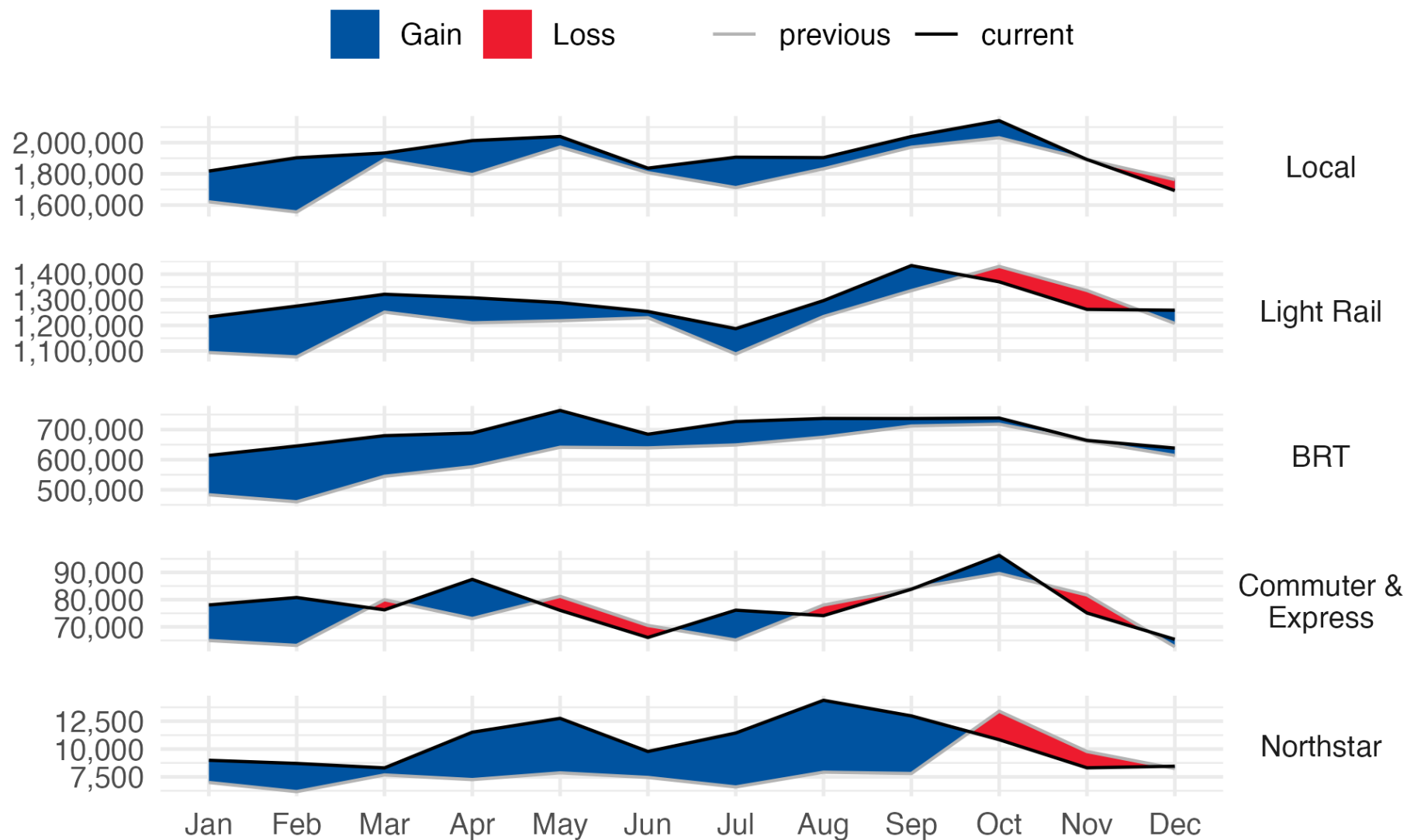
# Year-over-year growth across route classes



# Year-over-year midday bus ridership grew

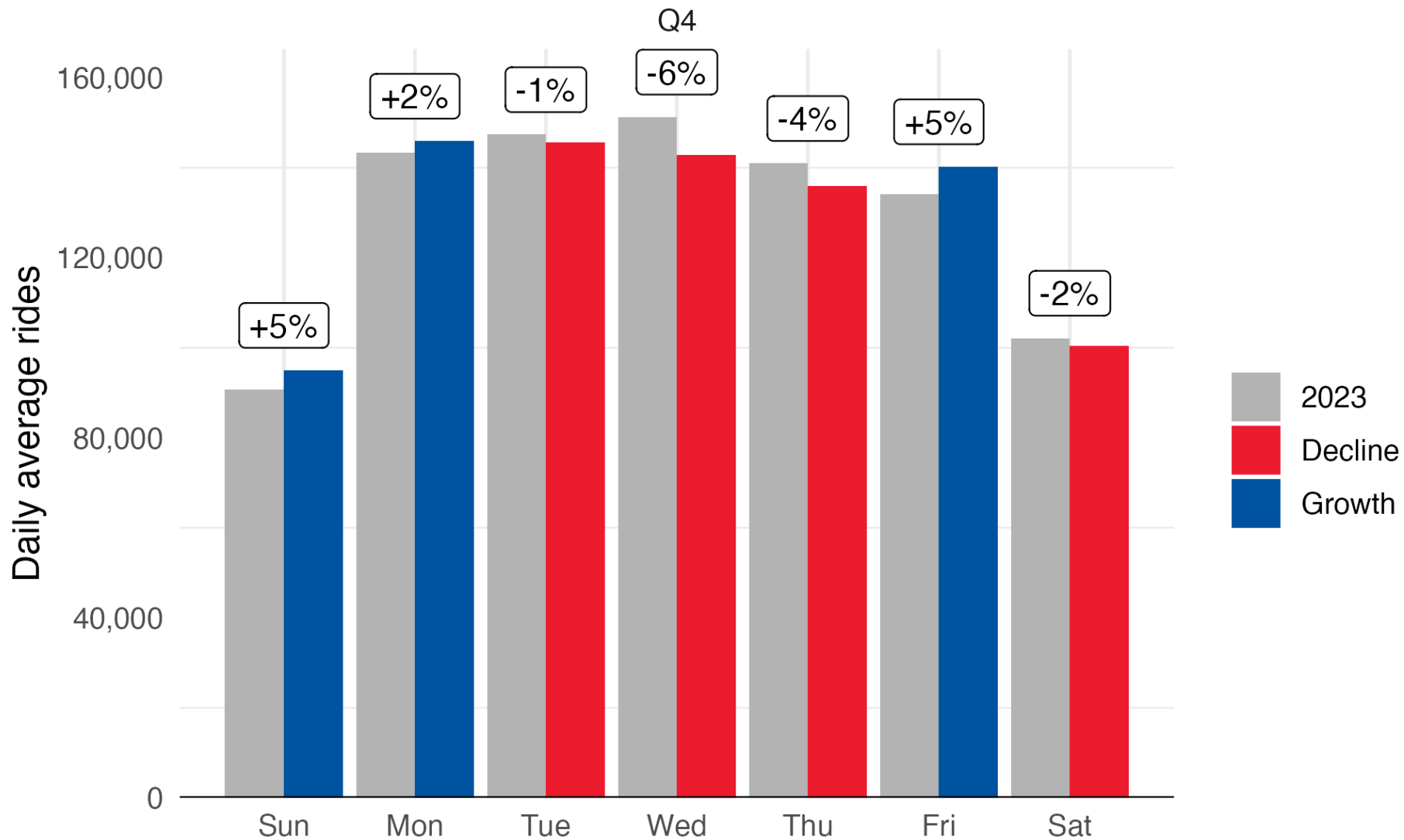


# Ridership decline in last quarter



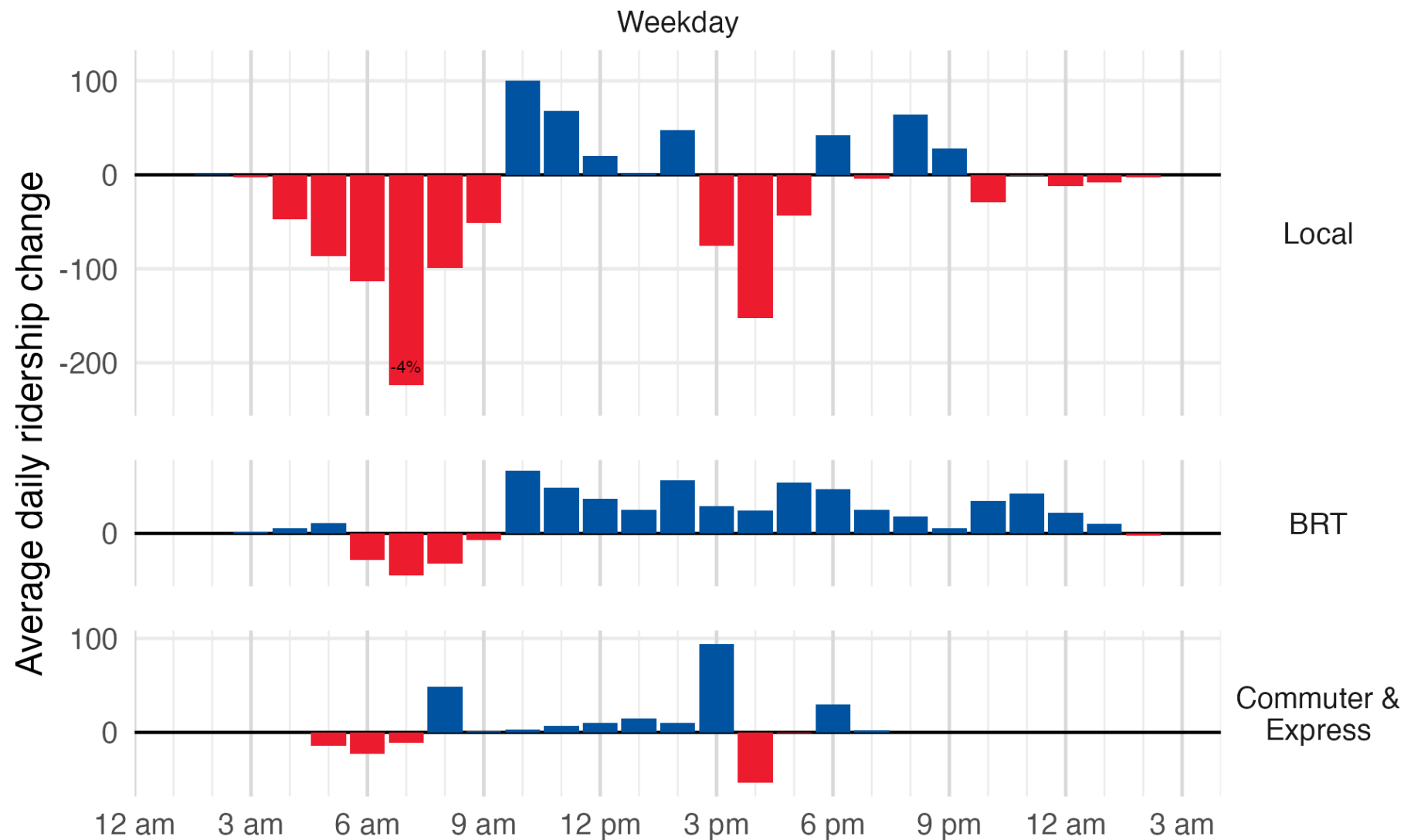
- 2024 ridership declined across multiple route classes relative to 2023
- Light rail shutdowns in October and November

# Q4 changes by day of week vs 2023



- Day-of-week differences decreasing
- Most growth on Sunday, Monday and Friday
- Decline on Wednesday, Thursday

# Q4-only weekday bus rush-hour decline



- Largest declines during rush hours
- Growth in Midday ridership across Local, BRT and Commuter
- Evening growth on BRT

# Key Take-Aways

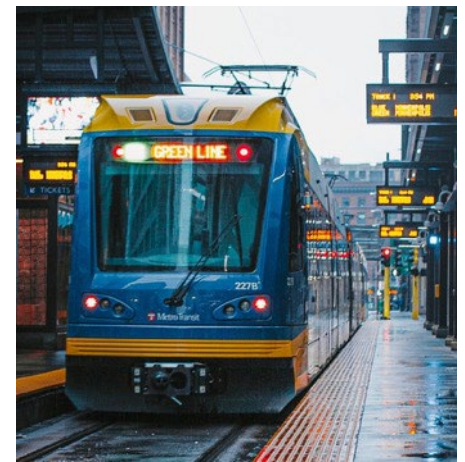


- Midday and early evening ridership is growing
- Existing commuter market may be saturating
- Investment in high-use BRT corridors should lead to big returns

# Future Ridership Analysis

## What information would be helpful?

- Regular quarterly updates
  - Variation among modes
  - Service day and time of day trends
  - Top and bottom performing routes
- Special topics
  - Respond to questions
  - Deep dives
  - Shifting transit markets and service changes
  - Peer comparisons





# Questions

